

Carrie Quade
SQUALPTURES, Inc.
466 San Marcos Loop
Santa Fe, NM 87508
302 559 0685
8/20/2020

Los Alamos APP Splash Pad Proposal

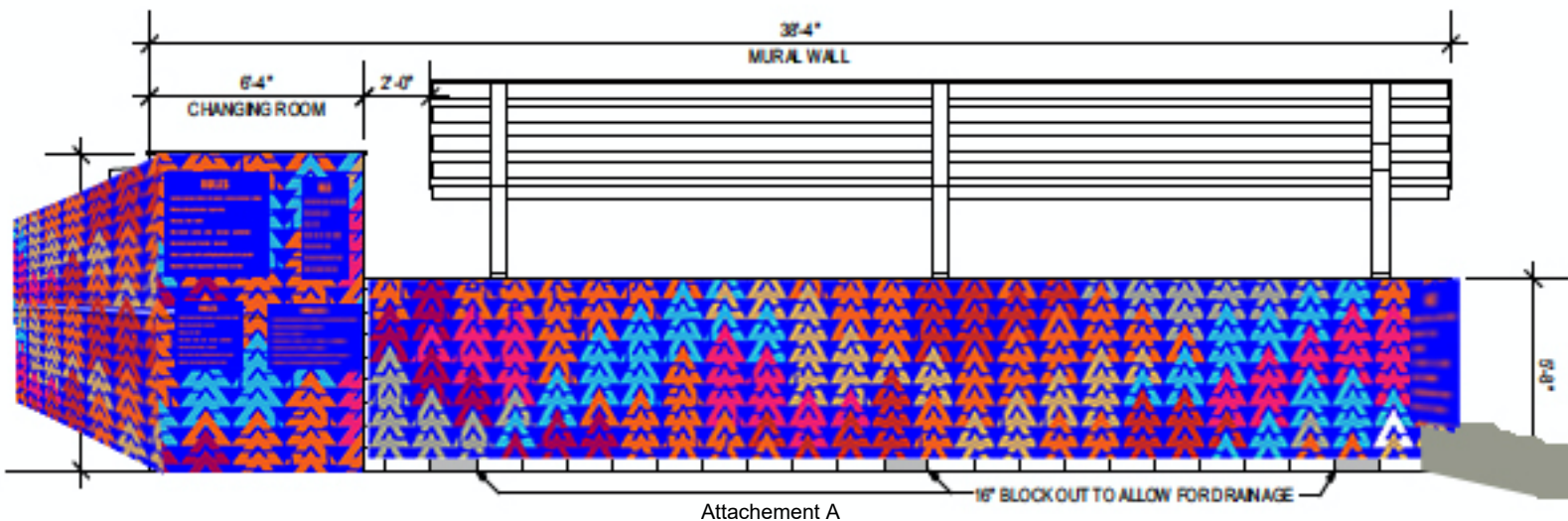
Dear Board Members,

I have been doing a great deal of homework since our last meeting and I am now confident about materials, fabrication and the installation process. After meeting with Kenneth Francis and Harold Strain at the site a few weeks ago, there was a suggestion to carry the 3 D design around the side of the building walls. Although the scope of the project grows, this will allow us to incorporate the signage into the maze design. My aesthetic sense is that this option will unite all Splash Pad elements.

Option 1

The HDU panels would wrap around the changing room and the 9'6" x 15' wall to the mechanical room. The panels along this 15ft wall would be milled with the same design but without the maze engraved, so not to invite activity along the planted area.

Permanent signage can be milled into the panels. Any interchangeable information can be printed and then attached to the panel with appropriate design. The emergency phone box and First Aid box can also be incorporated into the maze design.



BUDGET OUTLINE

Materials

30 lbs 1.5" HDU Panels	9 @ \$1310.00	\$11,790.00
------------------------	---------------	-------------

Fabrication

Milling.	9 @ \$362.50	\$3,262.50
----------	--------------	------------

Priming and Painting	9 @ \$1375.00	\$12,375.00
----------------------	---------------	-------------

Transportation, Site Preparation, Installation		\$3,500.00
Labor, equipment rentals		

Creative Services		\$22,500.00
--------------------------	--	-------------

Art project concept and design fee

Signage integration design

Management and oversight of entire project through to completion

Insurance, documentation

Total		\$53,427.50
-------	--	-------------

Sales Tax		\$3,806.70
-----------	--	------------

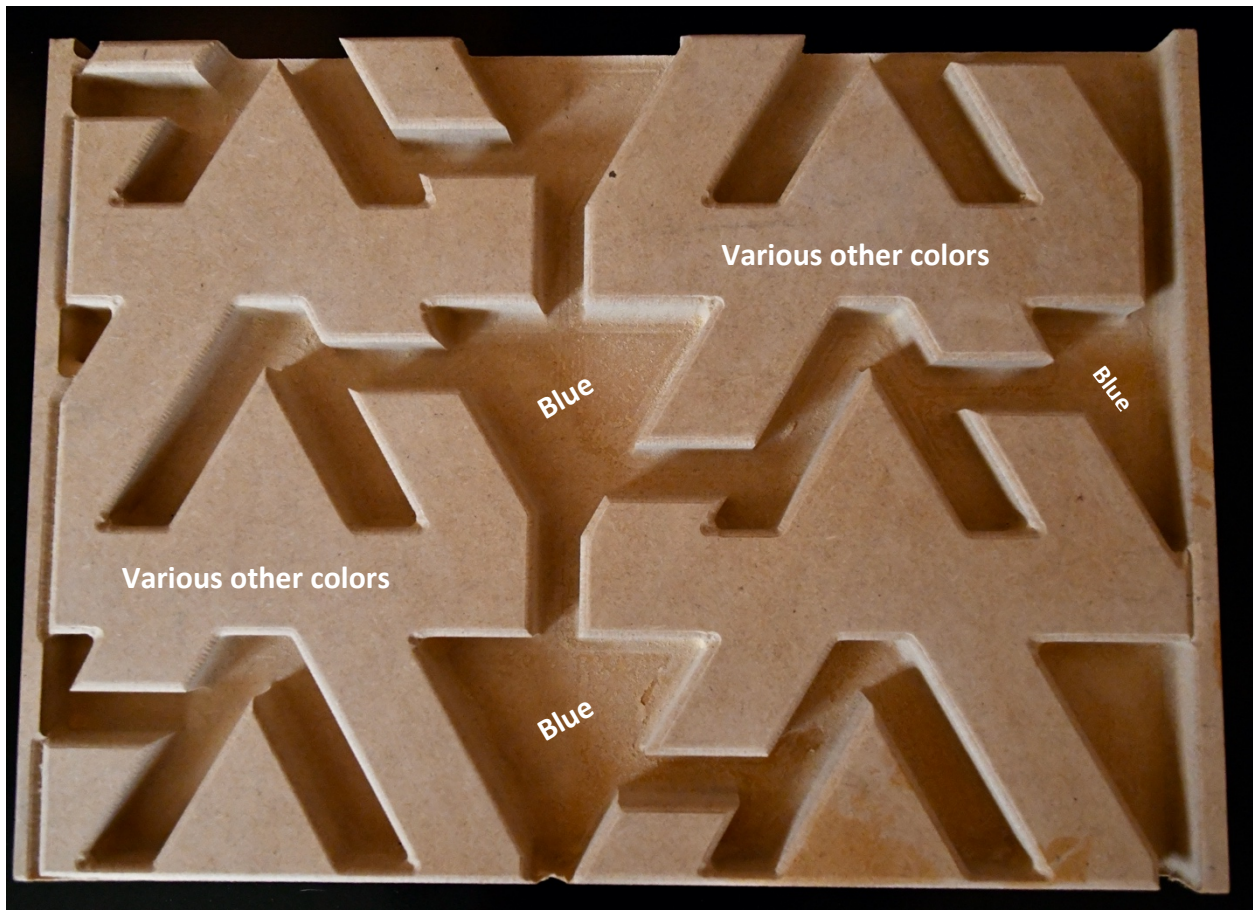
Total		\$57,234.20
-------	--	-------------

Proposed Splash Pad Art Material & Design Concept

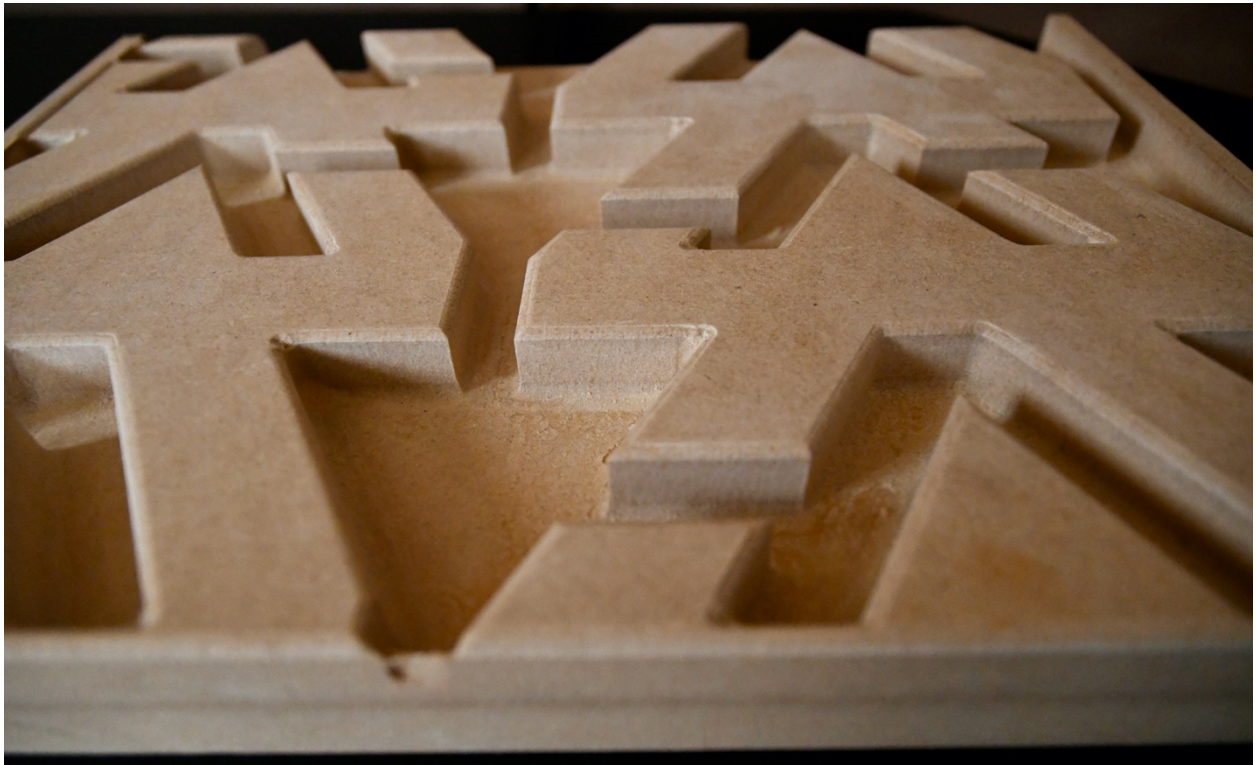
Design Concept:

Sample is true to scale but is not of the HDU material and isn't completely finished. The milling will be a bit wider so big fingers can fit, all areas smooth without points and it will also have an angle in the recessed areas so water doesn't accumulate.

- Milling areas – where fingers are meant to trace will be blue
- The raised areas – will be the different colors to match the splash pads color scheme.



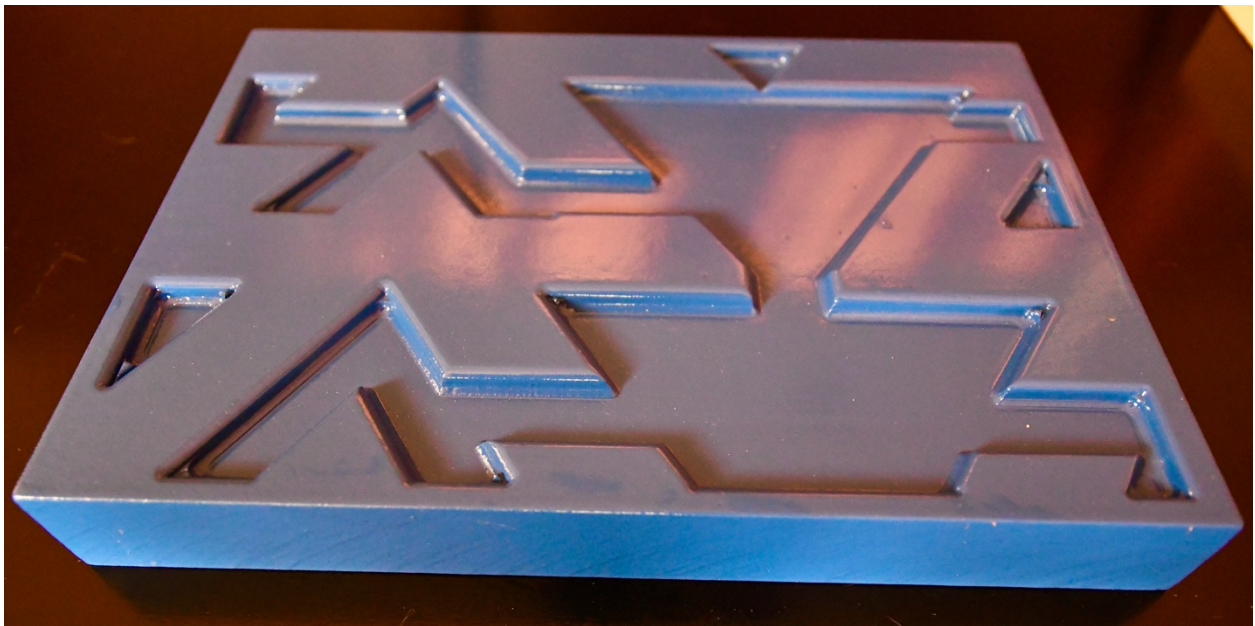
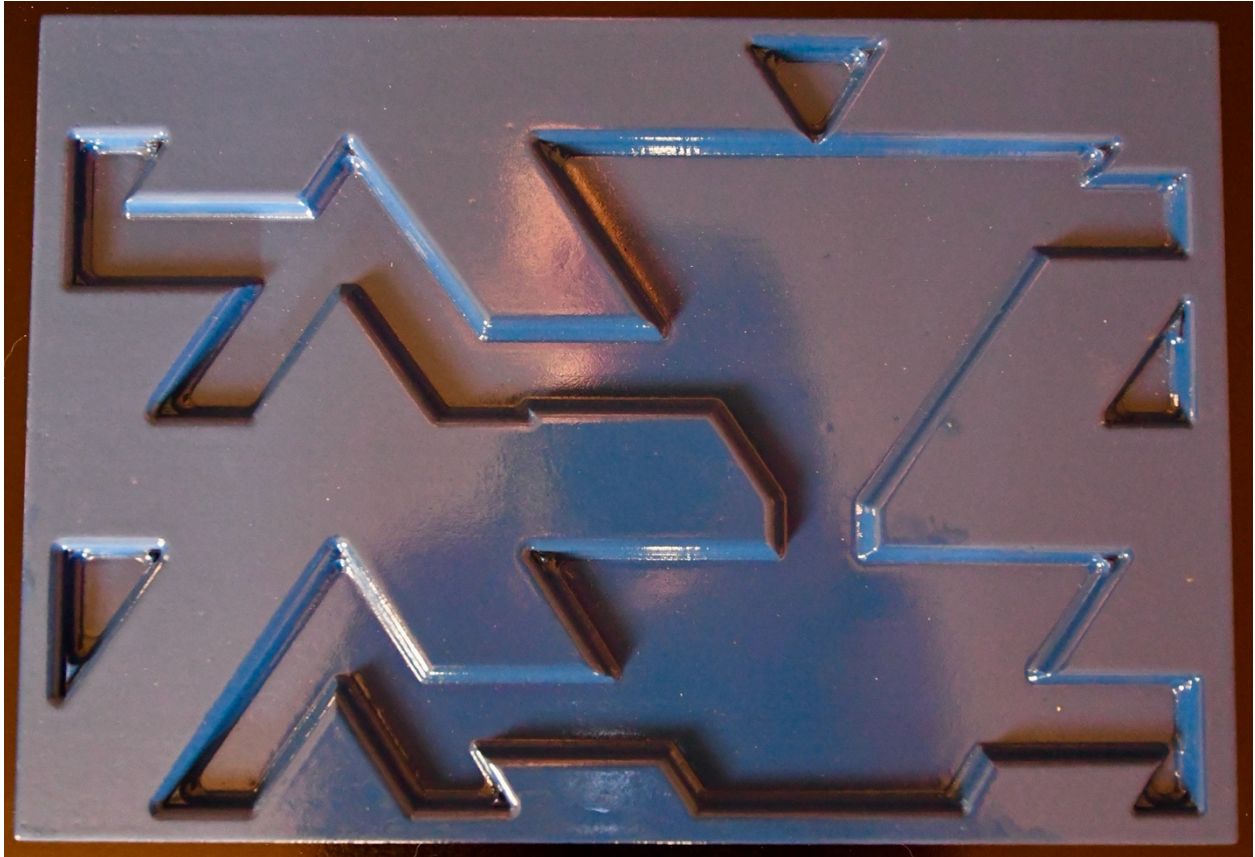
**Proposed Splash Pad Art Material
& Design Concept**



Proposed Splash Pad Art Material & Design Concept

Coating:

Below is a sample of the semi-glossy paint coating to go over the material.



Proposed Splash Pad Art Material
& Design Concept

Precision Board
The System
is the Difference

- Primer/Filler FSC-88WB
- Crack & Repair Mat. FSC-360
- Adhesive PB Bond-240
- Texture Coat TSF-45
- Toll Free Technical Dept.

Try the PB System Today!
(800) 845-0745
www.precisionboard.com

NOT TO SCALE OR DEPTH OF MILLING

RAISED AREAS TO BE PAINTED WITH OTHER COLORS

Precision Board
Artistically Superior to Wood!
• Life Of Sign Warranty!
• Large Sheet Sizes

Why Use Wood?
Try Precision Board Today!
(800) 845-0745
www.precisionboard.com

COASTAL ENTERPRISES

PBLT 25
(800) 845-0745
www.precisionboard.com

Proposed Splash Pad Art Material & Design Concept

HUD Material Samples:

Below are the material samples of two different weights.



Proposed Splash Pad Art Material
& Design Concept

