

Residential Sustainability Report

Service Period: August 2017

Recyclables Collected: 114.42 tons

Trash Collected: 496.99 tons

Compostable Materials Collected: 8.72 tons

Total Material Collected: 620.13 tons



LOS ALAMOS

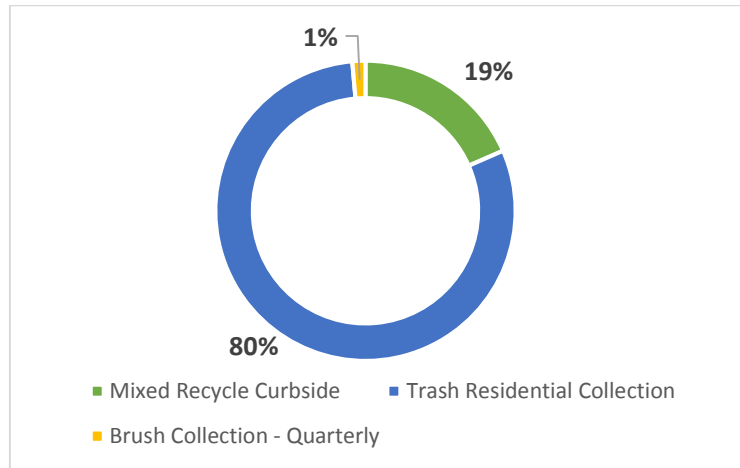
Monthly Collection Report

July Diversion Rate: **24%**

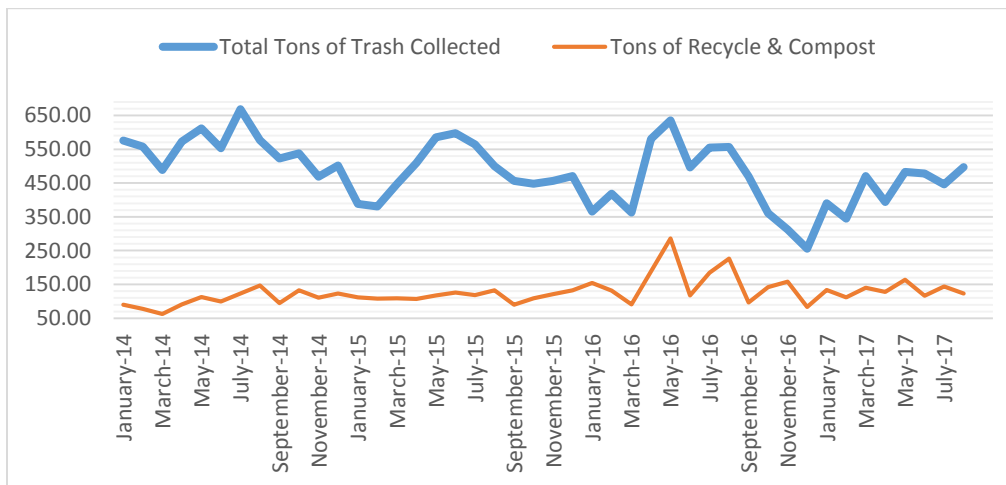
August Diversion Rate: **20%**

A **18% Decrease** in Diversion

The *diversion rate* is the percent of materials recycled and composted.



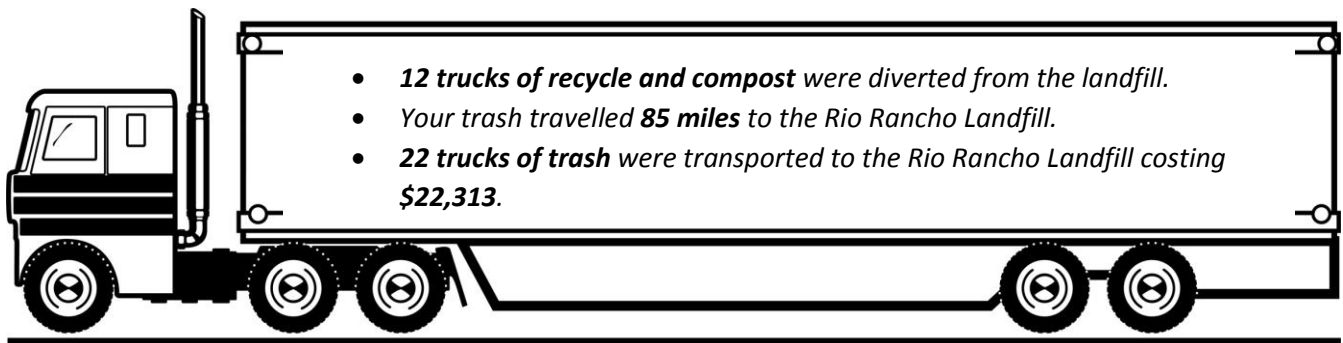
Month by Month Recycling Comparison



In 2007, 82% equating 1.8 million tons of ewaste (various electronics e.g. TVs, cell phones, computers etc) ended up in landfills.

In 1998, the National Safety Council study estimated about 20 million computers became obsolete within 1 year. In 2007, that number increased to 40 million.

Electronic waste total approximately 2% of the waste stream in the U.S.



- **12 trucks of recycle and compost** were diverted from the landfill.
- Your trash travelled **85 miles** to the Rio Rancho Landfill.
- **22 trucks of trash** were transported to the Rio Rancho Landfill costing **\$22,313**.