

# Urban Bike Path

Citizen Request Update

Incorporated County of Los Alamos  
Public Works Department

Philo S. Shelton III, Department Director  
Eric Martinez, County Engineer

Council Work Session  
February 7, 2017



# Supports Council Goals

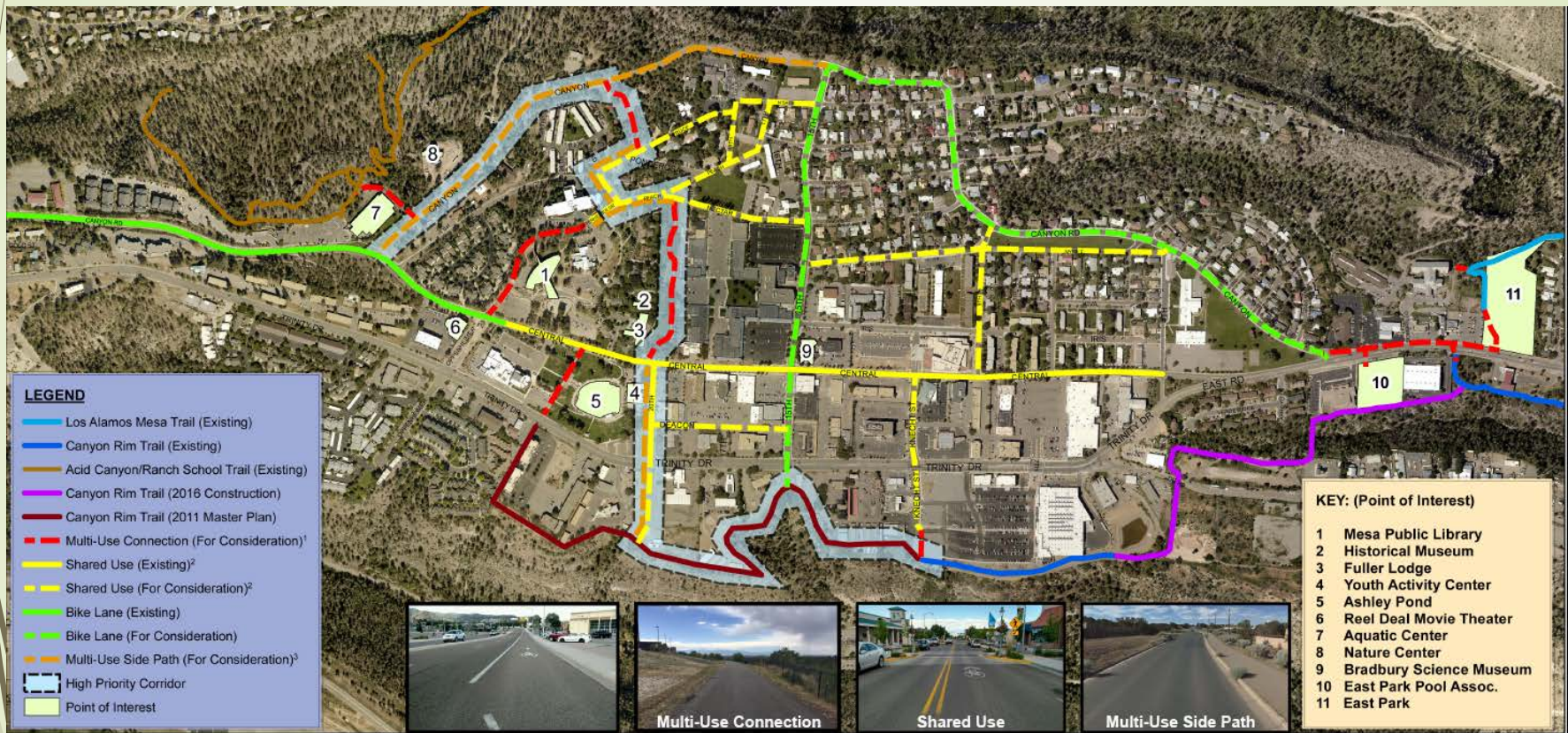
- Improve Transportation & Mobility, and
- Maintain Quality Essential Services and Supporting Infrastructure



# Brief History

- May 3, 2016 – Council acknowledged a petition by Ms. Brenda Fleming.
- July 7, 2016 – Bicycle and Pedestrian Route Map identifying a “High Priority Corridor” was developed and presented to the Transportation Board.
- July 26, 2016, Council unanimously approved the Map for inclusion in the forthcoming update of the Bicycle Transportation System Plan and for use in programming future improvements and requested additional discussions in the January 2017 timeframe on this topic.

# Bicycle & Pedestrian Route Map



<sup>1</sup>**Multi-Use Connection (Path)** – A bikeway physically separated from motor vehicle traffic by an open space within an independent right-of-way. Multi-use paths may be used by pedestrians, skaters, wheelchair users, joggers, and other non-motorized users. Most multi-use paths are designed for two-way travel.

<sup>2</sup>**Shared Use** – A lane of traveled way that is open to both bicycle and motor vehicle travel.

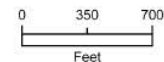
<sup>3</sup>**Multi-Use Sidepath** – A path located immediately adjacent and parallel to a roadway. Multi-use sidepaths may be used by pedestrians, skaters, wheelchair users, joggers, and other non-motorized users. Most multi-use side paths are designed for two-way travel.

## Los Alamos Bicycle & Pedestrian Routes

Attachment A



Date: 8/10/2016



LOS ALAMOS



# High Priority Corridor Segments

- Canyon Rim Trail
- Urban Trail Segment 1
- Urban Trail Segment 2
- Urban Trail Segment 3

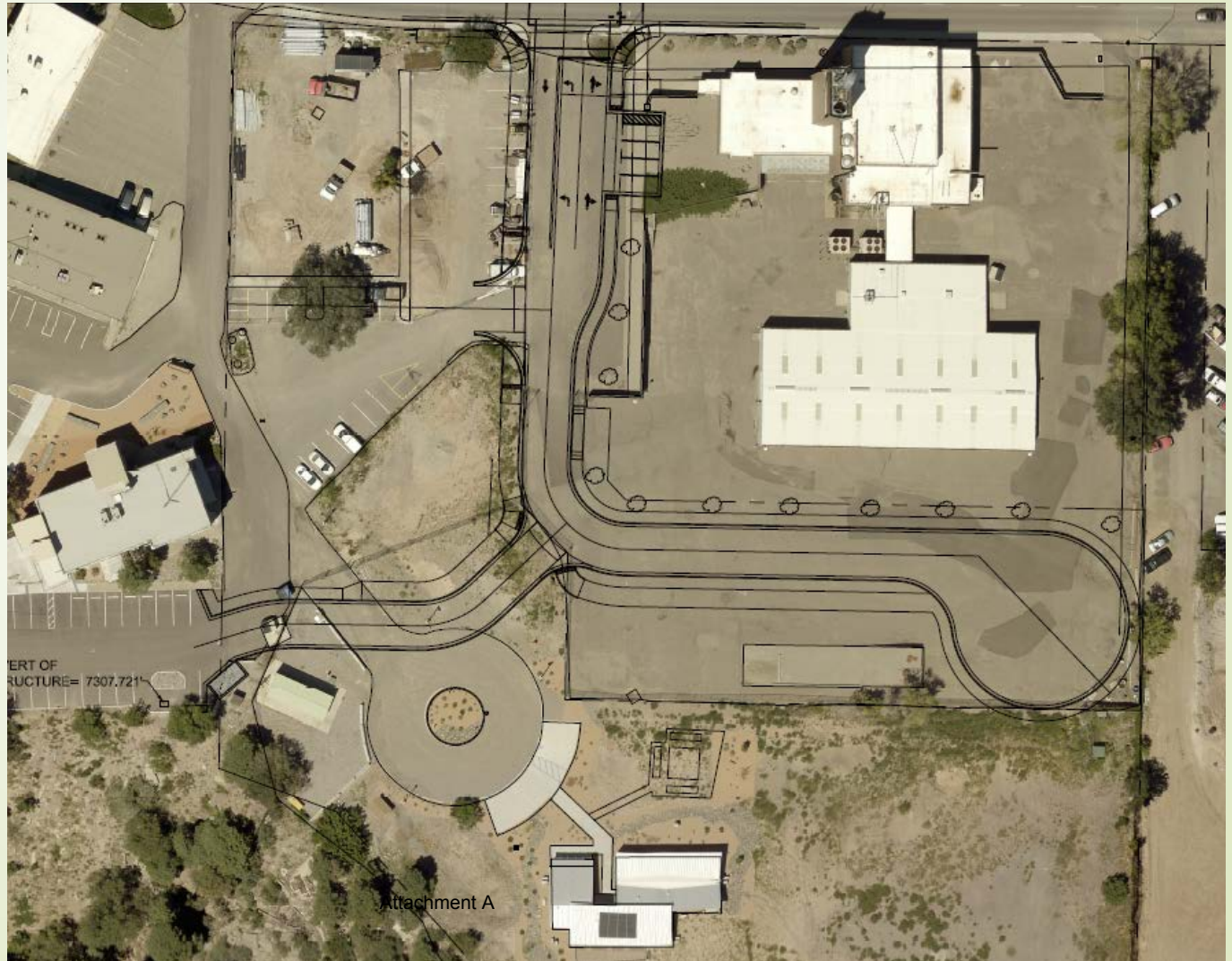
# Canyon Rim Trail

Knecht Street to 20<sup>th</sup> Street



# Urban Trail Segment 1 (20<sup>th</sup> St. Extension) Canyon Rim Trail to Trinity Drive

- In-house Design in Progress
- Presentation to T-Board on March 2<sup>nd</sup>



# Urban Trail Segment 2

## Trinity Dr. & 20<sup>th</sup> to Canyon Rd.

- Design Costs: \$0 (In-house Design)
- Estimated Construction Costs: \$420k



# Urban Trail Segment 3 (Canyon Rd) Tennis Court Entrance to Aquatic Center

- Design Costs: \$0  
(In-house Design)
- Estimated Construction Costs: \$320k





# Progress & Future Plans

- ▶ “High Priority Corridor” Work in Progress
  - ▶ Canyon Rim Trail Easement Acquisition & Preliminary Design
  - ▶ Urban Trail Segment 1 via 20th Street Extension Project
- ▶ Future CIP Programming Possibilities
- ▶ Bicycle Transportation System Plan Update



# Questions & Comments?