



County of Los Alamos

1000 Central Avenue
Los Alamos, NM 87544

Agenda - Final Transportation Board

Thursday, March 5, 2015

5:30 PM

1000 Central Avenue, Room 110

1. **CALL TO ORDER / ROLL CALL**

2. **APPROVAL OF AGENDA**

3. **PUBLIC COMMENT**

This section of the agenda is reserved for comments from the public on items that are not otherwise included in this agenda.

Please Limit Public Comment to 3 Minutes.

4. **LIAISONS' REPORTS**

5. **APPROVAL OF MINUTES**

- A. [6935-15](#) Approval of January 8, 2015, Transportation Board Minutes.

Presenters: Randall Ryti, Chair of the Transportation Board

Attachments: [A - January 8, 2015 Meeting Minutes](#)

6. **OLD BUSINESS - No Action**

- A. [6938-15](#) Presentation of New Mexico Department of Transportation (NMDOT) 90% Design for NM 502/ Trinity Drive from Knecht to Tewa Loop.

Presenters: Philo Shelton, Public Works Director

Attachments: [A - Presentation - 90% Design Plans](#)

7. **NEW BUSINESS - Possible Action**

- A. [6936-15](#) Election of Chair and Vice Chair.

Presenters: Randall Ryti, Chair of the Transportation Board

- B. [6961-15](#) Proclamation Declaring April 9, 2015 "Stand Up for Transportation Day".

Presenters: Philo Shelton

Attachments: [A - Proclamation Declaring April 9 as Stand Up for Transportation Day](#)

8. PROJECT UPDATES

- A.** [6937-15](#) Public Works Staff/Project Update - February 2015

Presenters: Philo Shelton, Public Works Director

Attachments: [A - Public Works Update - February 2015](#)

9. CHAIRPERSON'S REPORT

10. FUTURE AGENDA ITEMS

11. ADJOURNMENT

If you are an individual with a disability who is in need of a reader, amplifier, qualified sign language interpreter, or any other form of auxiliary aid or service to attend or participate in the hearing or meeting, please contact the County Human Resources Division at 505-662-8040 at least one week prior to the meeting or as soon as possible.

Public documents, including the agenda and minutes can be provided in various accessible formats. Please contact the personnel in the Public Works Division at 505-662-8150 if a summary or other type of accessible format is needed.



County of Los Alamos

Staff Report

March 05, 2015

Los Alamos, NM 87544
www.losalamosnm.us

Agenda No.: A.

Index (Council Goals): BCC - Quality, Essential, and Routine Services

Presenters: Randall Ryti, Chair of the Transportation Board

Legislative File: 6935-15

Title

Approval of January 8, 2015, Transportation Board Minutes.

Recommended Action

I move that the Transportation Board approve the January 8, 2015 minutes as presented.

OR

I move that the Transportation Board approve the January 8, 2015 minutes as amended.

Attachments

A - January 8, 2015 Meeting Minutes



County of Los Alamos

BCC Meeting Minutes

Transportation Board

1000 Central Avenue
Los Alamos, NM 87544

*Randall Ryti, Chair; Bethany King, Vice Chair;
Wayne Hardie, Nancy Barnes, Brian O'Neil
and Khalil Spencer, Members*

Thursday, January 8, 2015

5:30 PM

1000 Central Avenue, Council
Chambers

1. CALL TO ORDER / ROLL CALL

OTHERS IN ATTENDANCE:

Philo Shelton, Public Works Director; Francine Suazo, Acting Transit Manager; Audoro Espinoza, Public Works Engineering Project Manager; and Louise Romero, Public Works Office Manager.

Councilor Susan O'Leary; Don Machen, Environmental Sustainability Board Liaison; Albert T. Stoddard with LSC Transportation Consultants, Inc.; members of the media and members of the public.

2. APPROVAL OF AGENDA

A motion was made by Chair Ryti, seconded by Member O'Neil that this item be approved as amended; the motion passed by a unanimous vote.

3. PUBLIC COMMENT

4. LIAISONS' REPORTS

5. APPROVAL OF MINUTES

A. Approval of Minutes from the December 4, 2014 Transportation Board Meeting.

A motion was made by Member O'Neil, seconded by Member Hardie that the minutes be approved as presented. The motion passed by a unanimous vote.

6. OLD BUSINESS - Possible Action

A. Comprehensive Transit Study and Five-Year Plan.

A motion was made by Member O'Neil, seconded by Member Barnes that this item be approved as amended. The motion passed by a unanimous vote.

7. NEW BUSINESS - Possible Action

A. Approval of the 2015 Transportation Board Schedule of Meetings.

A motion was made by Member Hardie, seconded by Member O'Neil that the schedule of meetings for 2015 be approved . The motion passed by a unanimous vote.

- B. Sherwood Blvd. Improvements Project Presentation.

After a short discussion, a motion was made by Member O'Neil, seconded by Member Barnes that this item be approved. The motion passed by a unanimous vote.

- C. Review of Draft FY16 Work Plan.

After a short discussion a motion was made by Member Hardie, seconded by Member O'Neil that this item be approved . The motion passed by a unanimous vote.

8. PROJECT UPDATES

- A. December Staff Report/Project Updates.

9. CHAIRPERSON'S REPORT

10. FUTURE AGENDA ITEMS

11. NEXT MEETING - February 5, 2015

12. ADJOURNMENT

A motion was made by Member Hardie, seconded by Member O'Neil that the meeting be adjourned. The motion passed by a unanimous vote. The meeting adjourned at 7:00 p.m.

Randall Rytí

Date Approved



County of Los Alamos

Staff Report

March 05, 2015

Los Alamos, NM 87544
www.losalamosnm.us

Agenda No.: A.

Index (Council Goals): BCC - Quality, Essential, and Routine Services

Presenters: Philo Shelton, Public Works Director

Legislative File: 6938-15

Title

Presentation of New Mexico Department of Transportation (NMDOT) 90% Design for NM 502/ Trinity Drive from Knecht to Tewa Loop.

Body

NMDOT and Souder Miller and Associates will present 90% Design for NM 502/ Trinity Drive from Knecht to Tewa Loop.

Attachments

A - Presentation - 90% Design Plans

NM 502 Roadway Improvements Knecht Street to Tewa Loop

CN 5100650

LOS ALAMOS COUNTY TRANSPORTATION
BOARD PRESENTATION
90% Complete Status

March 5, 2015



PRESENTATION ITEMS

- Introduction
- Project Background
- Project Limits & Major Project Features
- 90% Design Plans
 - Roadway Plans
 - Roundabout
 - HAWK Signals
 - Storm Sewer
 - Utility Improvements
 - Landscaping Improvements
 - Maintenance of Traffic
- Pending Issues
- Schedule
- Questions

PROJECT BACKGROUND

● Project Identification

- Regional Planning Process
- Joint Effort – NMDOT & LA County

● Needs

- Capacity/Safety
 - Roadway & Intersection Operations
 - Pedestrian/Bicycle Facilities
- Storm Drainage Management
- Utility Upgrades
- Pavement Improvements
- Visuals > Main Entrance into Los Alamos

PROJECT BACKGROUND(cont.)

● STUDY PHASE

- **Alignment Studies**
 - Needs Assessment – *NM 502 Transportation Corridor Study & Plan*
 - Evaluation of Alternatives
 - Public/Agency Involvement
- Initial Public Meeting in February, 2005
- Initial Environmental Assessment (EA) - June, 2007
- Re-evaluation of EA to document changes & commitments - December, 2012
- Public Information Meeting in February - 2013
- EA and Finding of No Significant Impact (FONSI) approved by FHWA - May, 2013
- Project Advanced to Design Phase



PROJECT BACKGROUND (cont.)

● DESIGN PHASE (to date)

- Souder, Miller and Associates awarded Preliminary & Final Design Contract on December - 2013
- 30% Design Plans - June, 2014
- 60% Design Plans - September, 2014
- 90% Design Plans – March to May, 2015

PROJECT LIMITS & SCOPE

● KNECHT TO DP ROAD

- **Recently Completed Work – LA County**
 - Storm Drain, Utility Work, & Roadway Improvements
 - Smith's development
- **Remaining Work**
 - Pavement Rehabilitation
 - Minor Driveway/Sidewalk Improvements (north side)
 - New Signing & Striping

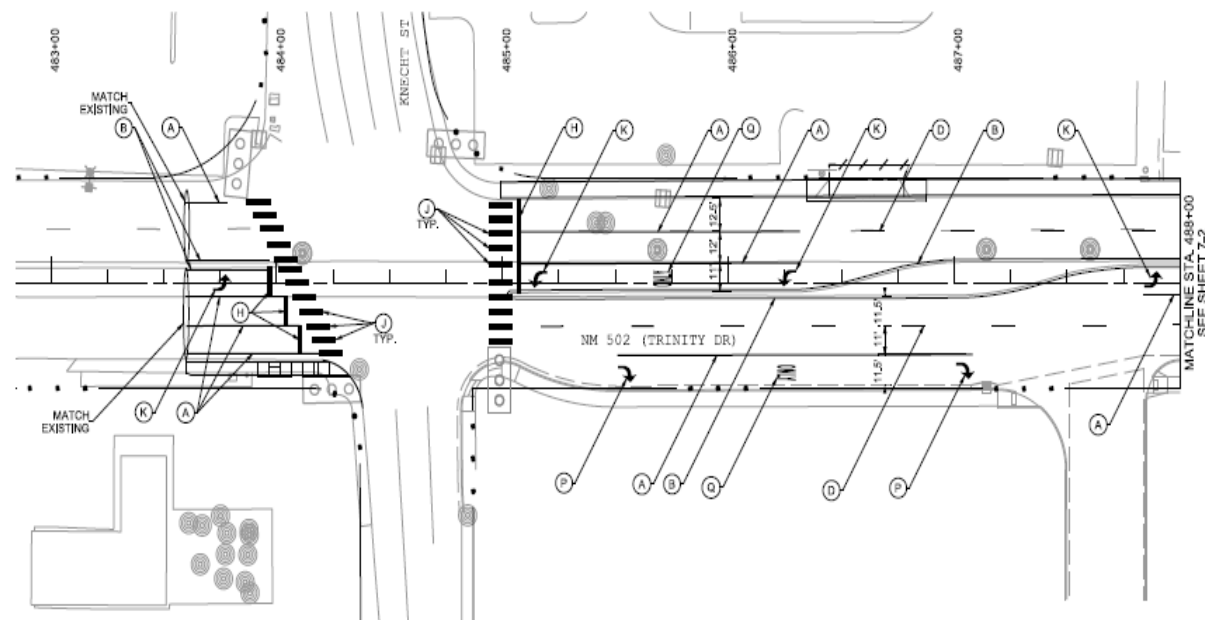
● DP ROAD TO TEWA LANE

- Full Roadway Reconstruction

MAJOR PROJECT FEATURES

- ◉ **Roadway Improvements**
 - Vehicle Travel Way, Pedestrians, Bicyclists, Pedestrian Crossings, ADA Compliance
- ◉ **Traffic Roundabout @ NM502/Central/4th**
- ◉ **Realignment of Canyon Road**
- ◉ **Storm Drain System**
- ◉ **Utility Relocations & Upgrades**
- ◉ **Updated Lighting System**
- ◉ **Landscaping Improvements**

90% PLANS



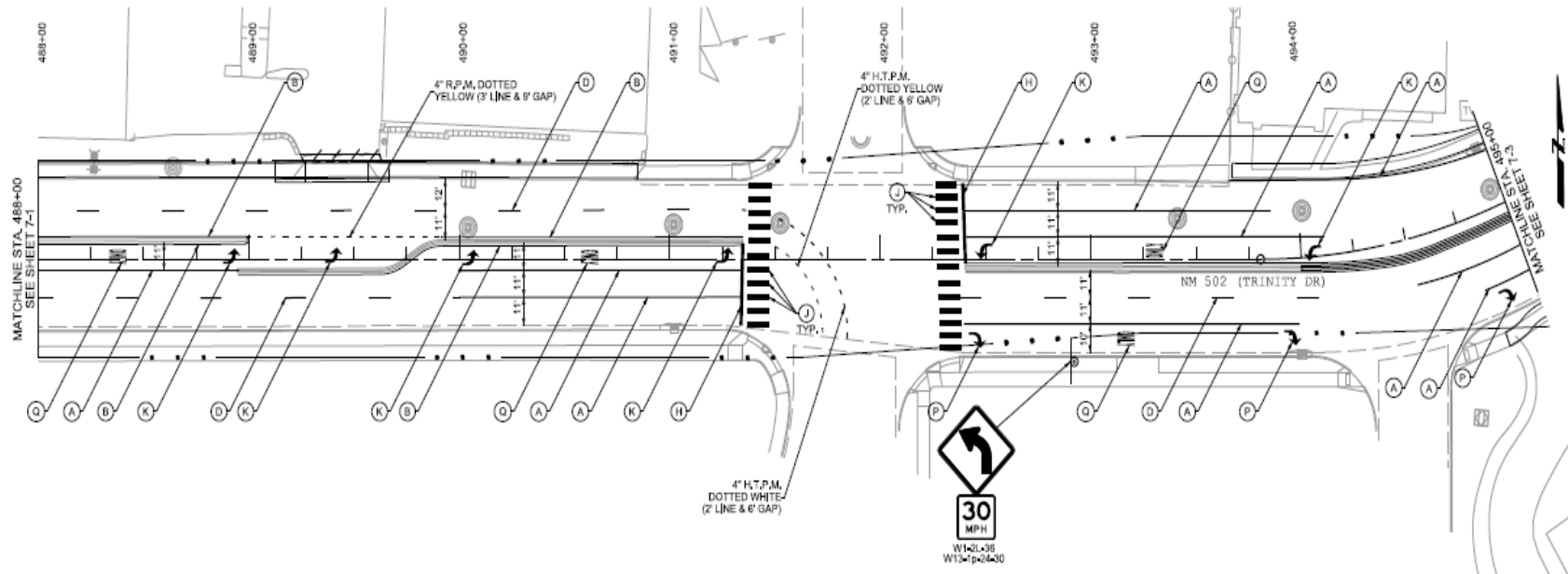
NOTE: LIMITED USE MARKINGS AND SYMBOLS ARE CALLED OUT INDIVIDUALLY AND DO NOT APPEAR IN THE LEGEND.

6			
5			
4			
3			
2			
1			
NO.	DESCRIPTION	DATE	

REVISIONS (OR CHANGE NOTICES)

NEW MEXICO DEPARTMENT
OF TRANSPORTATION
NM 502, TRINITY DR
FROM KNECHT ST TO TEWA LP

PERMANENT SIGNING & STRIPING

**LEGEND**

R.P.M. = RETROREFLECTORIZED PAINTED MARKINGS

H.T.P.M. = HOT THERMOPLASTIC PAVENT MARKING(S)

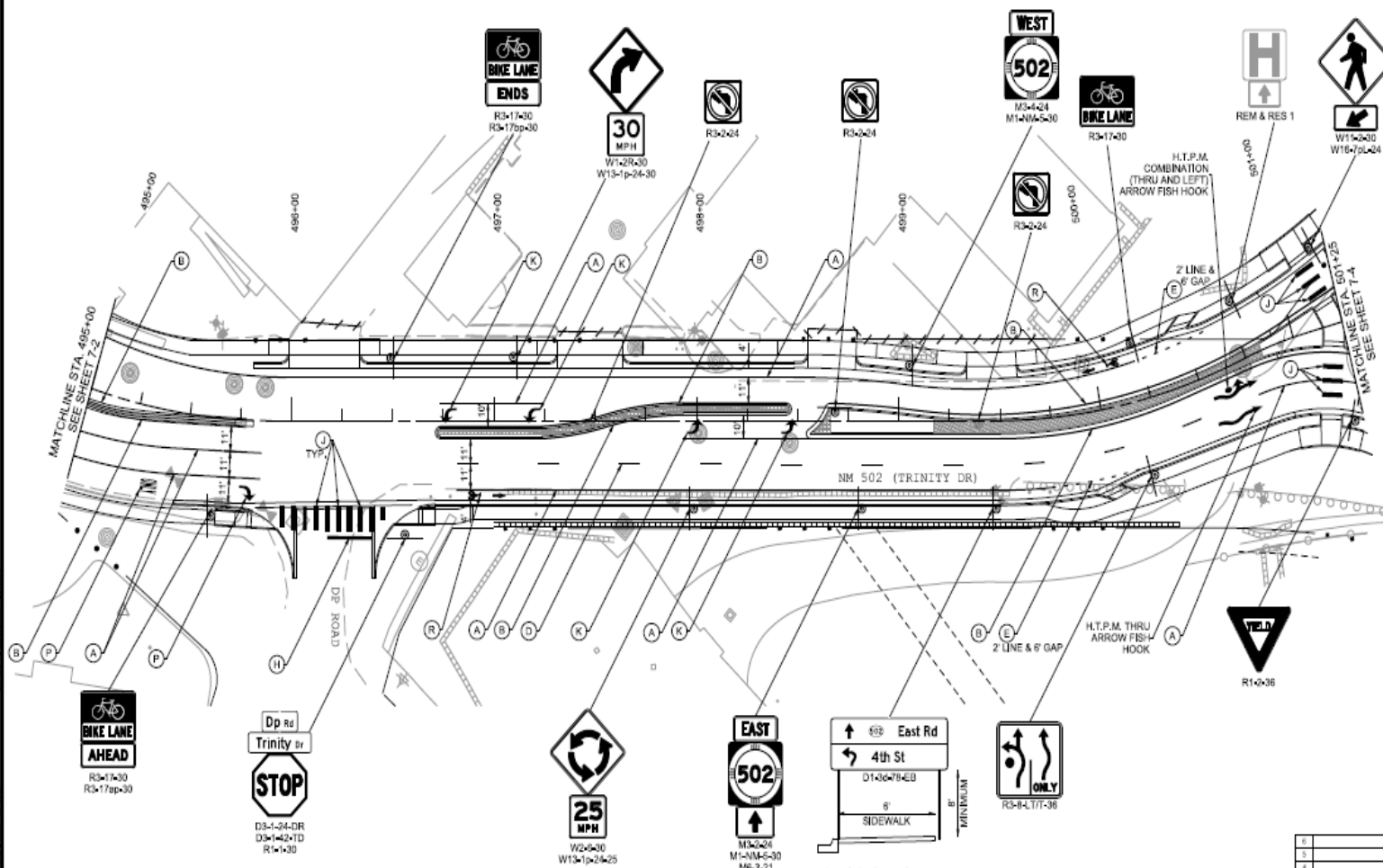
A	4" R.P.M. SOLID WHITE	K	H.T.P.M. LEFT ARROW
B	4" R.P.M. SOLID YELLOW	M	H.T.P.M. COMBINATION (THRU AND LEFT) ARROW
C	4" R.P.M. DOUBLE YELLOW	N	H.T.P.M. THRU ARROW
D	4" R.P.M. BROKEN WHITE	P	H.T.P.M. RIGHT ARROW
E	4" R.P.M. DOTTED WHITE	Q	H.T.P.M. WORD (ONLY)
F	8" R.P.M. DOTTED WHITE	R	H.T.P.M. BIKE SYMBOL (BIKEWAY)
G	8" H.T.P.M. DOTTED WHITE	NOTE: LIMITED USE MARKINGS AND SYMBOLS ARE CALLED OUT INDIVIDUALLY AND DO NOT APPEAR IN THE LEGEND.	
H	12" H.T.P.M. SOLID WHITE		
J	24" H.T.P.M. SOLID WHITE		

6			
5			
4			
3			
2			
1			
NO.	DESCRIPTION	DATE	BY

REVISIONS (OR CHANGE NOTICES)

NEW MEXICO DEPARTMENT
OF TRANSPORTATION
NM 502, TRINITY DR
FROM KNECHT ST TO TEWA LP

PERMANENT SIGNING &
STRIPING



R.P.M. = RETROREFLECTORIZED PAINTED MARKINGS		
H.T.P.M. = HOT THERMOPLASTIC PAYMENT MARKING(S)		
A	4" R.P.M. SOLID WHITE	K H.T.P.M. LEFT ARROW
B	4" R.P.M. SOLID YELLOW	M H.T.P.M. COMBINATION (THRU AND LEFT) ARROW
C	4" R.P.M. DOUBLE YELLOW	N H.T.P.M. THRU ARROW
D	4" R.P.M. BROKEN WHITE	P H.T.P.M. RIGHT ARROW
E	4" R.P.M. DOTTED WHITE	Q H.T.P.M. WORD (ONLY)
F	8" R.P.M. DOTTED WHITE	R H.T.P.M. BIKE SYMBOL (BIKEWAY)
G	8" H.T.P.M. DOTTED WHITE	<u>NOTE:</u> LIMITED USE MARKINGS AND SYMBOLS ARE
H	12" H.T.P.M. SOLID WHITE	CALLED OUT INDIVIDUALLY AND DO NOT APPEAR
J	24" H.T.P.M. SOLID WHITE	IN THE LEGEND.

NOTE: SIGN SHALL SPAN
SIDEWALK AND A MINIMUM OF
8' CLEARANCE BETWEEN TOP
OF SIDEWALK AND BOTTOM
OF SIGN SHALL BE PROVIDED.

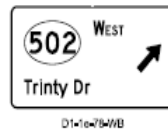
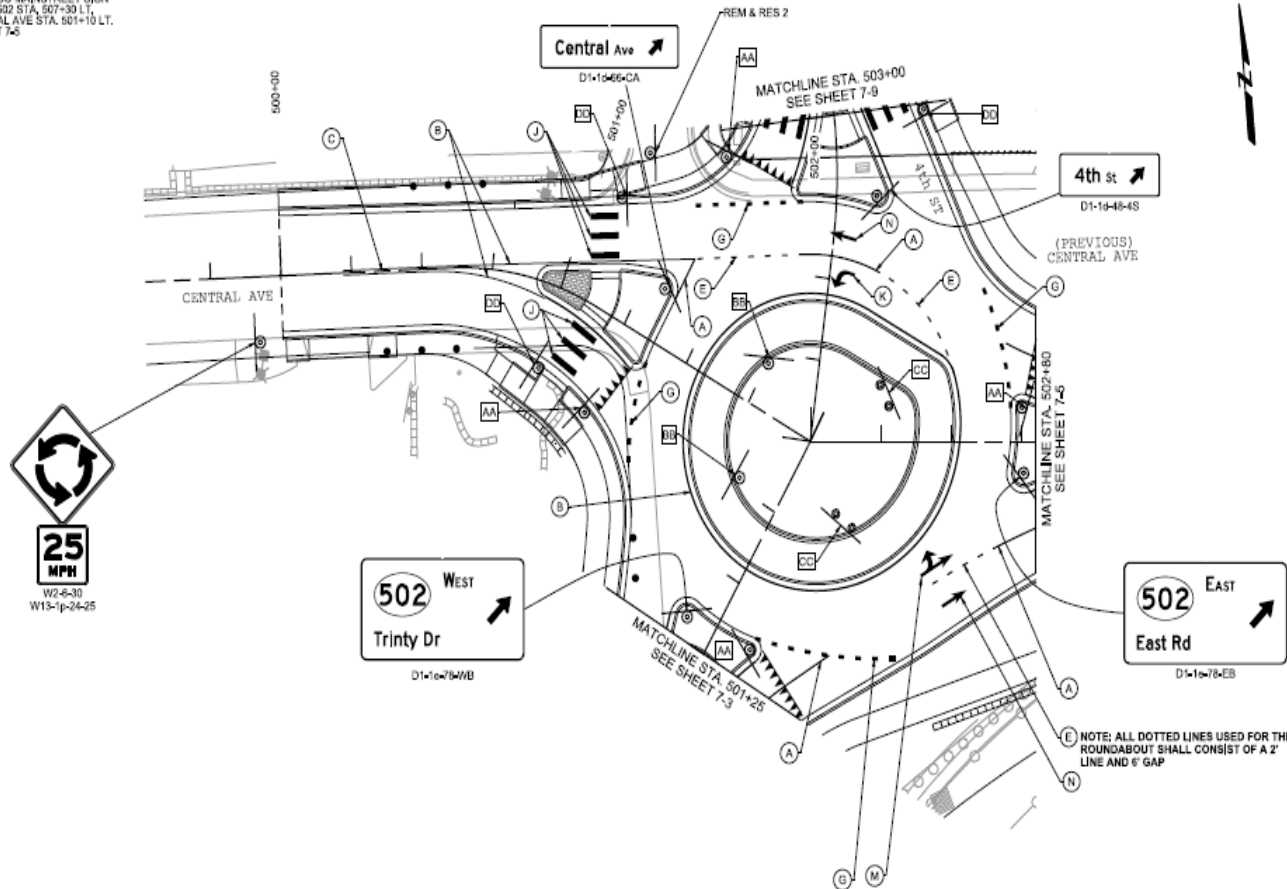
6			
5			
4			
3			
2			
1			
NO.	DESCRIPTION	DATE	

NEW MEXICO DEPARTMENT
OF TRANSPORTATION
NM 502, TRINITY DR
FROM KNECHT ST TO TEWA LP

PERMANENT SIGNING &
STRIPING

DRAWING SCALE: 1/50

REMOVE AND RESET 2
NEW MEXICO MAINSTREET SIGN
FROM NM 502 STA. 507+30 LT.
TO CENTRAL AVE STA. 501+10 LT.
SEE SHEET 7-5



AA



R1-2-4-8

BB



R6-4-1-8

CC



R6-4-1-8

DD



W11-4-30

W16-2-1-4

LEGEND

R.P.M. = RETROREFLECTORIZED PAINTED MARKINGS
H.T.P.M. = HOT THERMOPLASTIC PAVEMENT MARKING(S)

- | | |
|----------------------------|--|
| A 4" R.P.M. SOLID WHITE | K H.T.P.M. LEFT ARROW |
| B 4" R.P.M. SOLID YELLOW | M H.T.P.M. COMBINATION (THRU AND LEFT) ARROW |
| C 4" R.P.M. DOUBLE YELLOW | N H.T.P.M. THRU ARROW |
| D 4" R.P.M. BROKEN WHITE | P H.T.P.M. RIGHT ARROW |
| E 4" R.P.M. DOTTED WHITE | Q H.T.P.M. WORD (ONLY) |
| F 8" R.P.M. DOTTED WHITE | R H.T.P.M. BIKE SYMBOL (BIKEWAY) |
| G 8" H.T.P.M. DOTTED WHITE | |
| H 12" H.T.P.M. SOLID WHITE | |
| J 24" H.T.P.M. SOLID WHITE | |
| YIELD LINE | |

NOTE: LIMITED USE MARKINGS AND SYMBOLS ARE
CALLED OUT INDIVIDUALLY AND DO NOT APPEAR
IN THE LEGEND.

6			
5			
4			
3			
2			
1			
NO.	DESCRIPTION	DATE	BY

REVISIONS (OR CHANGE NOTICES)

NEW MEXICO DEPARTMENT
OF TRANSPORTATION
NM 502, TRINITY DR
FROM KNECHT ST TO TEWA LP

PERANENT SIGNING &
STRIPING

REMOVE AND RESET 3
HIST. DIST. / VIS. CNT. SIGN
ADD CENTRAL AVE PLAQUE
FROM NM 502 STA. 509+30 LT.
TO NM 502 STA. 505+10 LT.
SEE SHEET 746



NOTE: LIMITED USE MARKINGS AND SYMBOLS ARE CALLED OUT INDIVIDUALLY AND DO NOT APPEAR IN THE LEGEND.

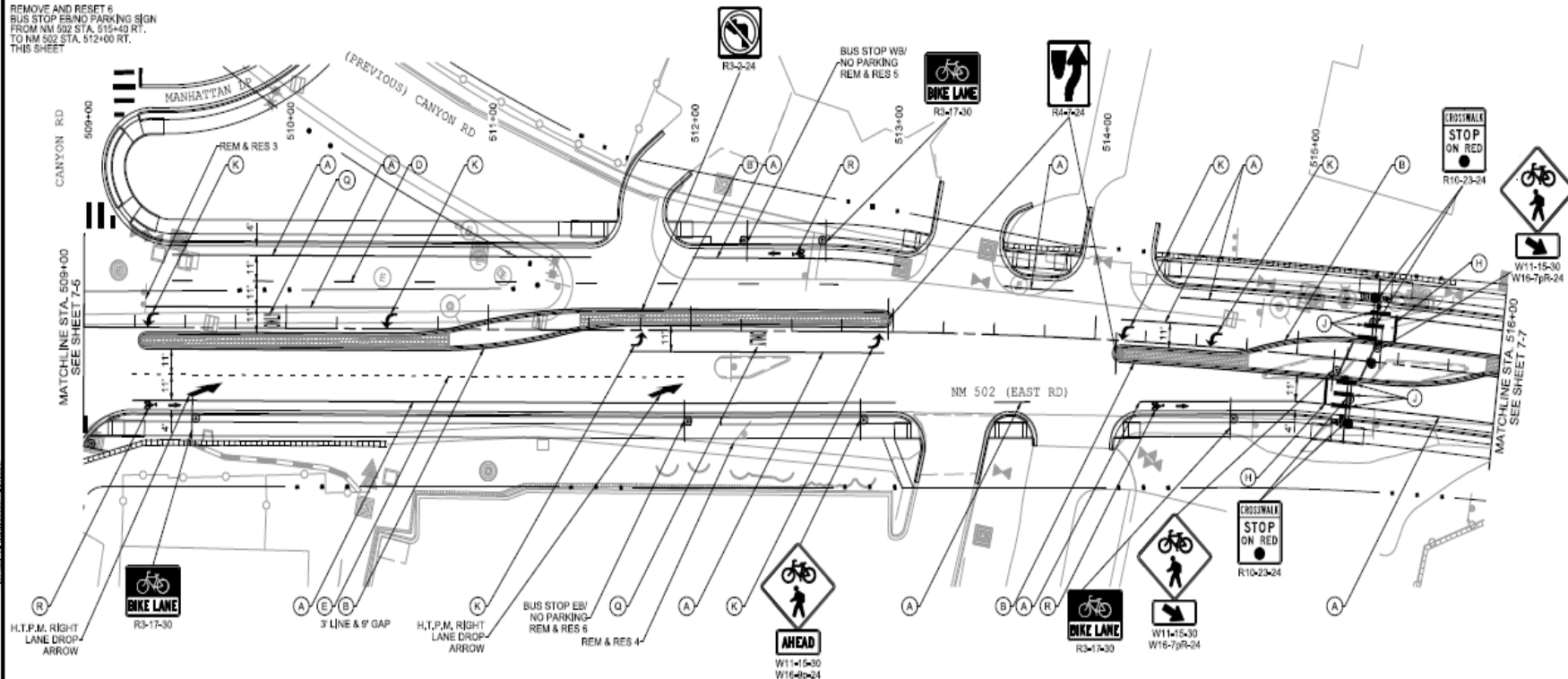
PERMANENT SIGNING & STRIPING

REMOVE AND RESET 3
HIST. DIST. / VIS. CNT. SIGN
ADD CENTRAL AVE PLAQUE
FROM NM 502 STA. 509+30 LT.
TO NM 502 STA. 509+10 LT.
SEE SHEET 7-5

REMOVE AND RESET 4
SHARED DESTINATION SIGN
FROM NM 502 STA. 512+25 RT.
TO CANYON RD STA. 41+00 LT.
SEE SHEET 7-10

REMOVE AND RESET 5
BUS STOP WB/NO PARKING SIGN
FROM NM 502 STA. 512+55 LT.
TO NM 502 STA. 512+25 LT.
THIS SHEET

REMOVE AND RESET 6
BUS STOP EB/NO PARKING SIGN
FROM NM 502 STA. 515+30 RT.
TO NM 502 STA. 512+00 RT.
THIS SHEET

**LEGEND**

R.P.M. = RETROREFLECTORIZED PAINTED MARKINGS

H.T.P.M. = HOT THERMOPLASTIC PAVENT MARKING(S)

- | | |
|----------------------------|--|
| A 4" R.P.M. SOLID WHITE | K H.T.P.M. LEFT ARROW |
| B 4" R.P.M. SOLID YELLOW | M H.T.P.M. COMBINATION (THRU AND LEFT) ARROW |
| C 4" R.P.M. DOUBLE YELLOW | N H.T.P.M. THRU ARROW |
| D 4" R.P.M. BROKEN WHITE | P H.T.P.M. RIGHT ARROW |
| E 4" R.P.M. DOTTED WHITE | Q H.T.P.M. WORD (ONLY) |
| F 8" R.P.M. DOTTED WHITE | R H.T.P.M. BIKE SYMBOL (BIKEWAY) |
| G 8" H.T.P.M. DOTTED WHITE | |
| H 12" H.T.P.M. SOLID WHITE | |
| J 24" H.T.P.M. SOLID WHITE | |

NOTE: LIMITED USE MARKINGS AND SYMBOLS ARE
CALLED OUT INDIVIDUALLY AND DO NOT APPEAR
IN THE LEGEND.

6			
5			
4			
3			
2			
1			
NO.	DESCRIPTION	DATE	BY

REVISIONS (OR CHANGE NOTICES)

NEW MEXICO DEPARTMENT
OF TRANSPORTATION
NM 502, TRINITY DR
FROM KNECHT ST TO TEWA LP

PERMANENT SIGNING &
STRIPING

DRAWING SCALE: 1"=50'



NOTE: LIMITED USE MARKINGS AND SYMBOLS ARE CALLED OUT INDIVIDUALLY AND DO NOT APPEAR IN THE LEGEND.

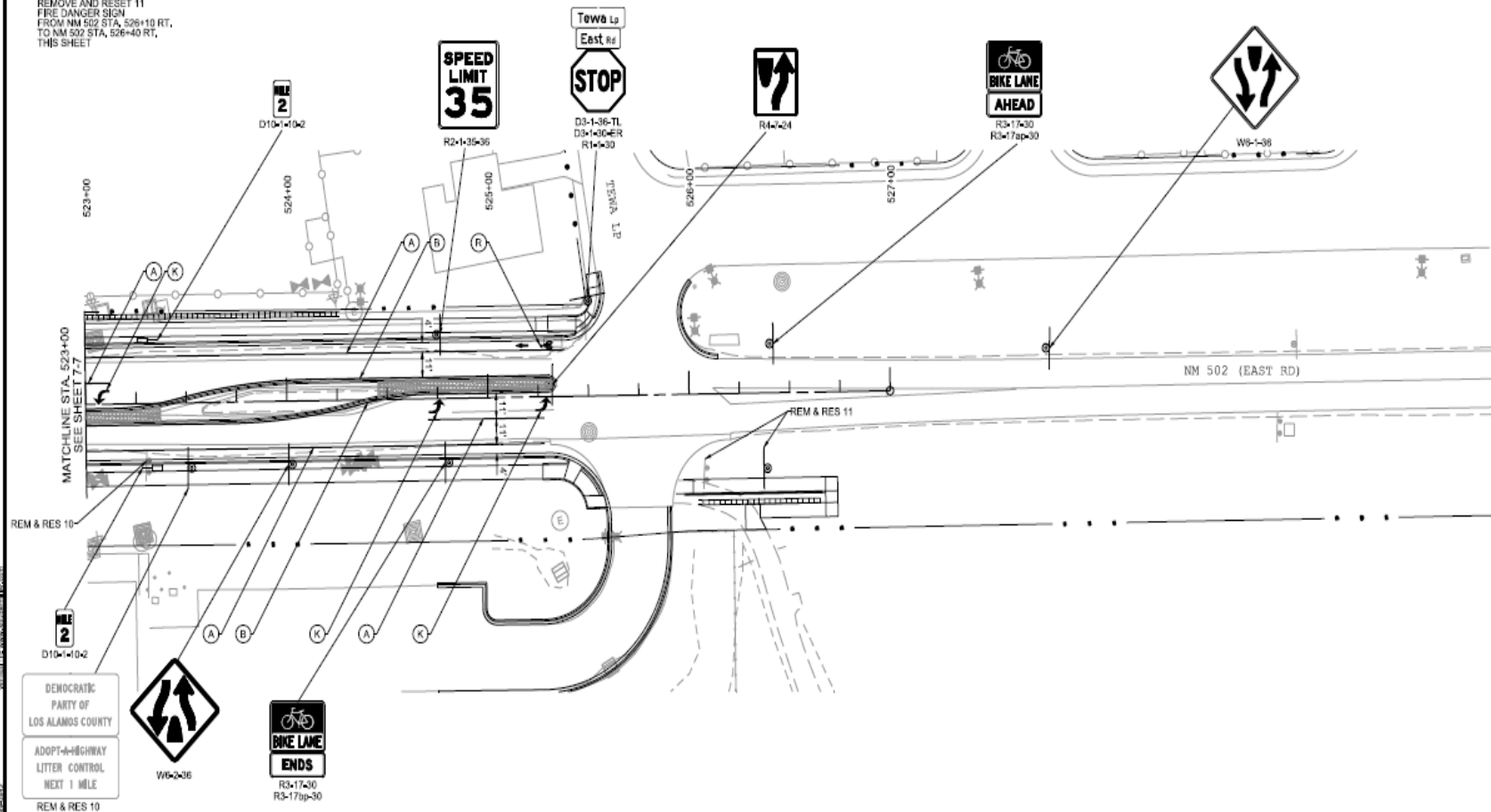
REVISIONS (OR CHANGE NOTICES)

PERMANENT SIGNING &
STRIPING

DRAWING SCALE: 1:50

REMOVE AND RESET 10
 FROM NM 502 STA. 523+30 RT.
 TO NM 502 STA. 523+50 RT.
 THIS SHEET

REMOVE AND RESET 11
 FIRE DANGER SIGN
 FROM NM 502 STA. 526+10 RT.
 TO NM 502 STA. 526+40 RT.
 THIS SHEET

**LEGEND**

R.P.M. = RETROREFLECTORIZED PAINTED MARKINGS

H.T.P.M. = HOT THERMOPLASTIC PAVEMENT MARKING(S)

- | | |
|----------------------------|--|
| A 4" R.P.M. SOLID WHITE | K H.T.P.M. LEFT ARROW |
| B 4" R.P.M. SOLID YELLOW | M H.T.P.M. COMBINATION (THRU AND LEFT) ARROW |
| C 4" R.P.M. DOUBLE YELLOW | N H.T.P.M. THRU ARROW |
| D 4" R.P.M. BROKEN WHITE | P H.T.P.M. RIGHT ARROW |
| E 4" R.P.M. DOTTED WHITE | Q H.T.P.M. WORD (ONLY) |
| F 8" R.P.M. DOTTED WHITE | R H.T.P.M. BIKE SYMBOL (BIKEWAY) |
| G 8" H.T.P.M. DOTTED WHITE | |
| H 12" H.T.P.M. SOLID WHITE | |
| J 24" H.T.P.M. SOLID WHITE | |

NOTE: LIMITED USE MARKINGS AND SYMBOLS ARE CALLED OUT INDIVIDUALLY AND DO NOT APPEAR IN THE LEGEND.

6		
5		
4		
3		
2		
1		
NO.	DESCRIPTION	DATE

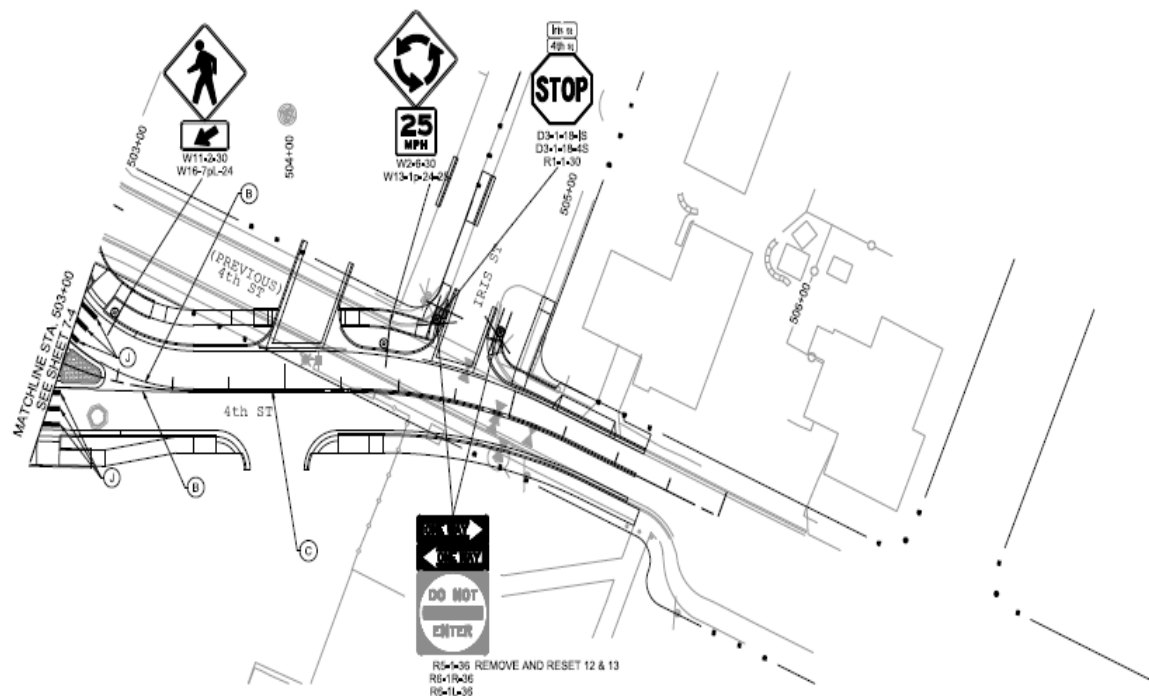
NOTES (OR CHANGE NOTICES)

NEW MEXICO DEPARTMENT
 OF TRANSPORTATION
**NM 502, TRINITY DR
 FROM KNECHT ST TO TEWA LP**

PERMANENT SIGNING &
 STRIPING

REMOVE AND RESET 12
 R5-1-36 SIGN
 ADD R6-1 SERIES SIGNS
 FROM 4th ST STA. 504+00 LT.
 TO 4th ST STA. 504+80 LT.
 THIS SHEET

REMOVE AND RESET 13
 R5-1-36 SIGN
 ADD R6-1 SERIES SIGNS
 FROM 4th ST STA. 504+00 LT.
 TO 4th ST STA. 504+80 LT.
 THIS SHEET

**LEGEND**

R.P.M. = RETROREFLECTORIZED PAINTED MARKINGS

H.T.P.M. = HOT THERMOPLASTIC PAVEMENT MARKING(S)

- | | |
|----------------------------|---|
| A 4" R.P.M. SOLID WHITE | K H.T.P.M. LEFT ARROW |
| B 4" R.P.M. SOLID YELLOW | N H.T.P.M. COMBINATION (THRU AND LEFT) ARROW |
| C 4" R.P.M. DOUBLE YELLOW | P H.T.P.M. THRU ARROW |
| D 4" R.P.M. BROKEN WHITE | Q H.T.P.M. RIGHT ARROW |
| E 4" R.P.M. DOTTED WHITE | R H.T.P.M. WORD (ONLY) |
| F 8" R.P.M. DOTTED WHITE | S H.T.P.M. BIKE SYMBOL (BIKEWAY) |
| G 8" H.T.P.M. DOTTED WHITE | NOTE: LIMITED USE MARKINGS AND SYMBOLS ARE |
| H 12" H.T.P.M. SOLID WHITE | CALLED OUT INDIVIDUALLY AND DO NOT APPEAR |
| J 24" H.T.P.M. SOLID WHITE | IN THE LEGEND. |

5			
4			
3			
2			
1			
NO.	DESCRIPTION	DATE	BY

NEW MEXICO DEPARTMENT
 OF TRANSPORTATION
 NM 502, TRINITY DR
 FROM KNECHT ST TO TEWA LP

PERMANENT SIGNING &
 STRIPING

[illegible]

A	4" R.P.M. SOLID WHITE	K	H.T.P.M. LEFT ARROW
B	4" R.P.M. SOLID YELLOW	M	H.T.P.M. COMBINATION (THRU AND LEFT) ARROW
C	4" R.P.M. DOUBLE YELLOW	N	H.T.P.M. THRU ARROW
D	4" R.P.M. BROKEN WHITE	P	H.T.P.M. RIGHT ARROW
E	4" R.P.M. DOTTED WHITE	Q	H.T.P.M. WORD (ONLY)
F	8" R.P.M. DOTTED WHITE	R	H.T.P.M. BIKE SYMBOL (BIKEWAY)
G	8" H.T.P.M. DOTTED WHITE	NOTE: LIMITED USE MARKINGS AND SYMBOLS ARE CALLED OUT INDIVIDUALLY AND DO NOT APPEAR IN THE LEGEND.	
H	12" H.T.P.M. SOLID WHITE		
J	12" H.T.P.M. SOLID WHITE		

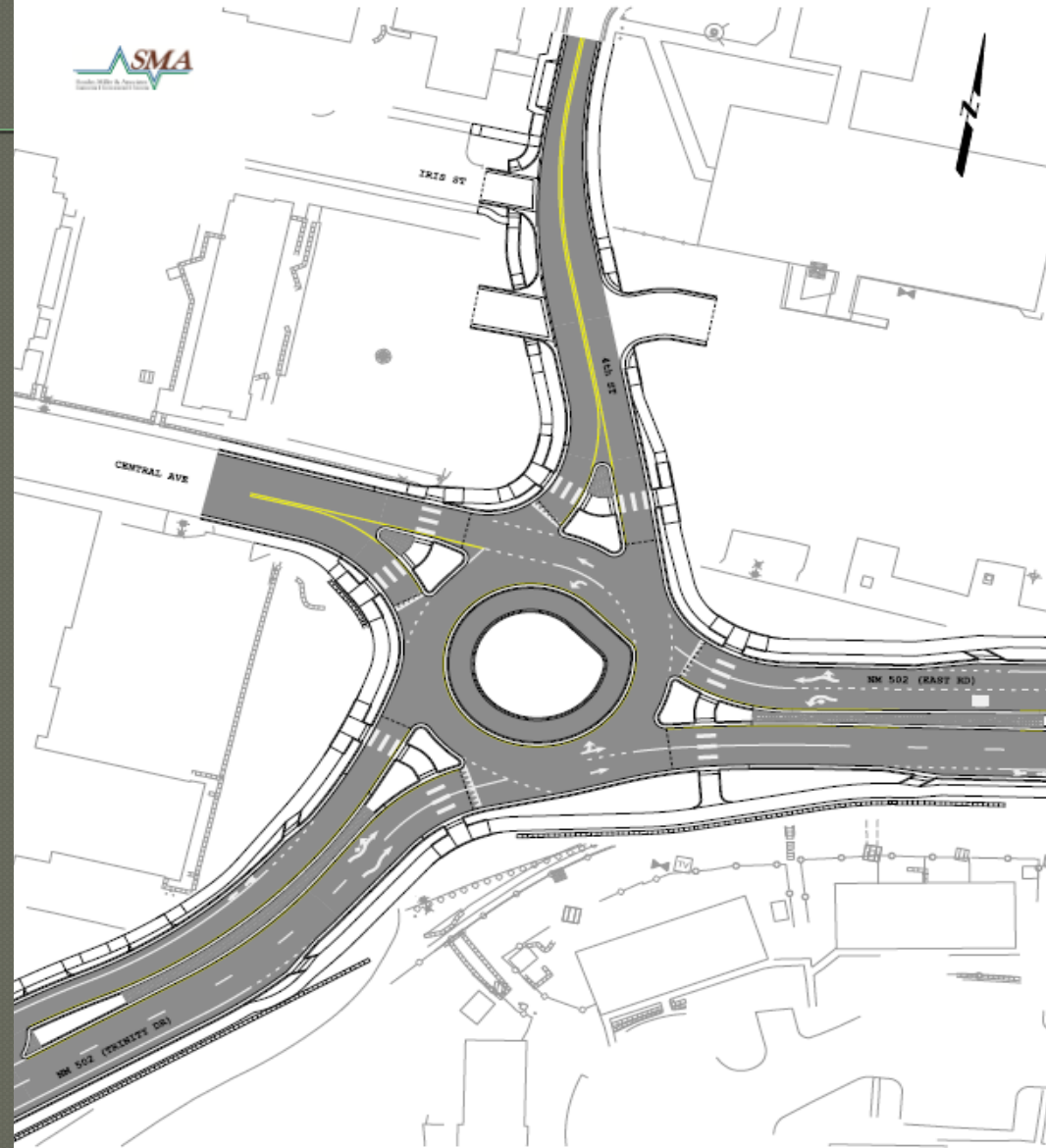
6			
5			
4			
3			
2			
1			
NO.	DESCRIPTION	DATE	

REVISIONS (OR CHANGE NOTICES)

NEW MEXICO DEPARTMENT
OF TRANSPORTATION
NM 502, TRINITY DR
FROM KNECHT ST TO TEWA LP

PERMANENT SIGNING &
STRIPING

- TRAFFIC
ROUNDBABOUT
PLAN



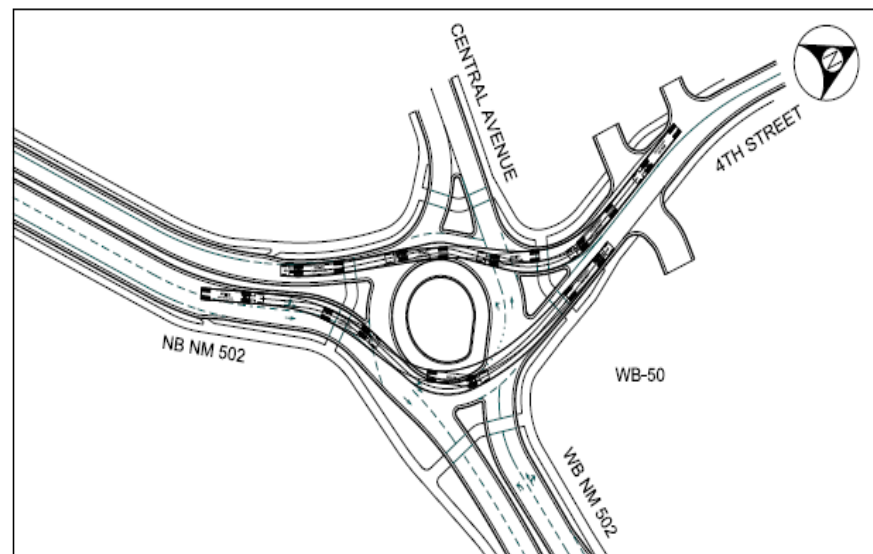
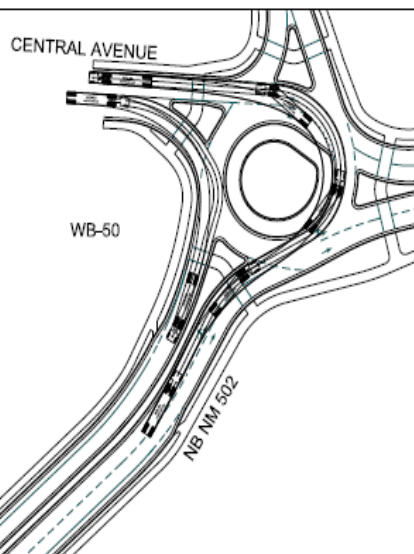
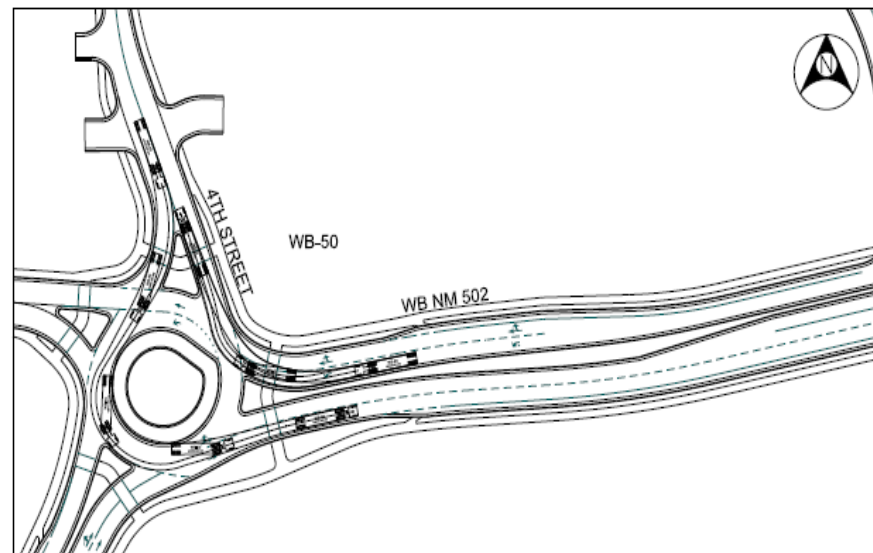
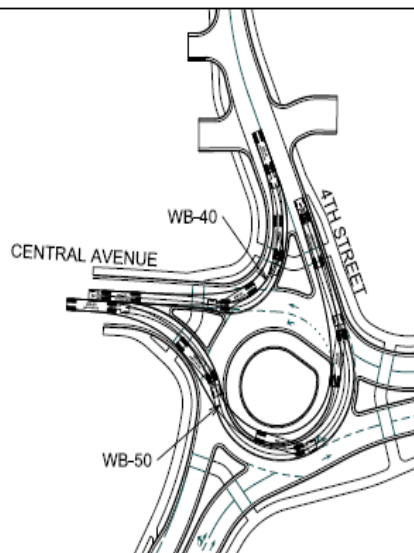
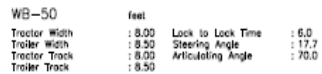
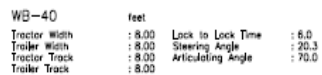
YEAR 2030 ROUNDABOUT TRAFFIC OPERATIONS

Table 2. Operational Analysis Summary

Model	Movement	AM Peak Period			PM Peak Period		
		Delay (s)	LOS ¹	Queue ² (ft)	Delay (s)	LOS ¹	Queue ² (ft)
ARCADY	Overall	12.9	B	N/A	4.8	A	N/A
	SB 4 th Street	8.8	A	25	4.4	A	25
	EB Central Avenue	6.0	A	25	4.8	A	25
	NB NM 502 (Trinity Dr.)	2.0	A	25	4.7	A	25
	WB NM 502 (Trinity Dr.)	16.1	C	350	5.0	A	25
HCM	Overall	8.5	A	N/A	9.2	A	N/A
	SB 4 th Street	8.4	A	25	4.9	A	25
	EB Central Avenue	7.3	A	25	6.2	A	50
	NB NM 502 (Trinity Dr.)	4.2	A	25	12.0	B	125
	WB NM 502 (Trinity Dr.)	9.5	A	125	4.5	A	25
SIDRA	Overall	0.8	A	N/A	1.8	A	N/A
	SB 4 th Street	5.0	A	25	1.8	A	25
	EB Central Avenue	5.8	A	50	1.8	A	50
	NB NM 502 (Trinity Dr.)	0.4	A	25	2.3	A	100
	WB NM 502 (Trinity Dr.)	0.2	A	100	0.3	A	25

¹ LOS Source: 2010 Highway Capacity Manual – Unsignalized Intersections

² Queue represents maximum 95th percentile lane queue, 25 feet per vehicle

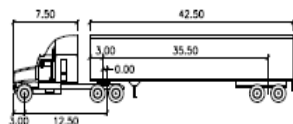


NM 502 (TRINITY DRIVE) at CENTRAL AVENUE
LOS ALAMOS, NM

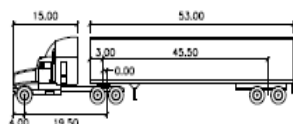
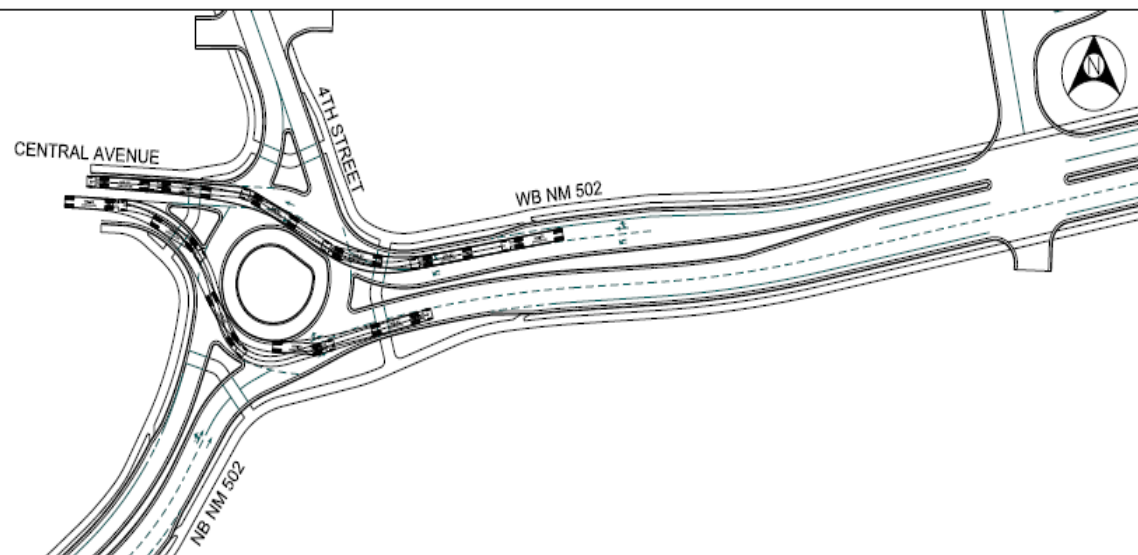
DESIGN VEHICLE - WB 40; WB 50

A horizontal scale bar with tick marks at 0, 50, and 100. The word "SCALE" is centered above the bar.

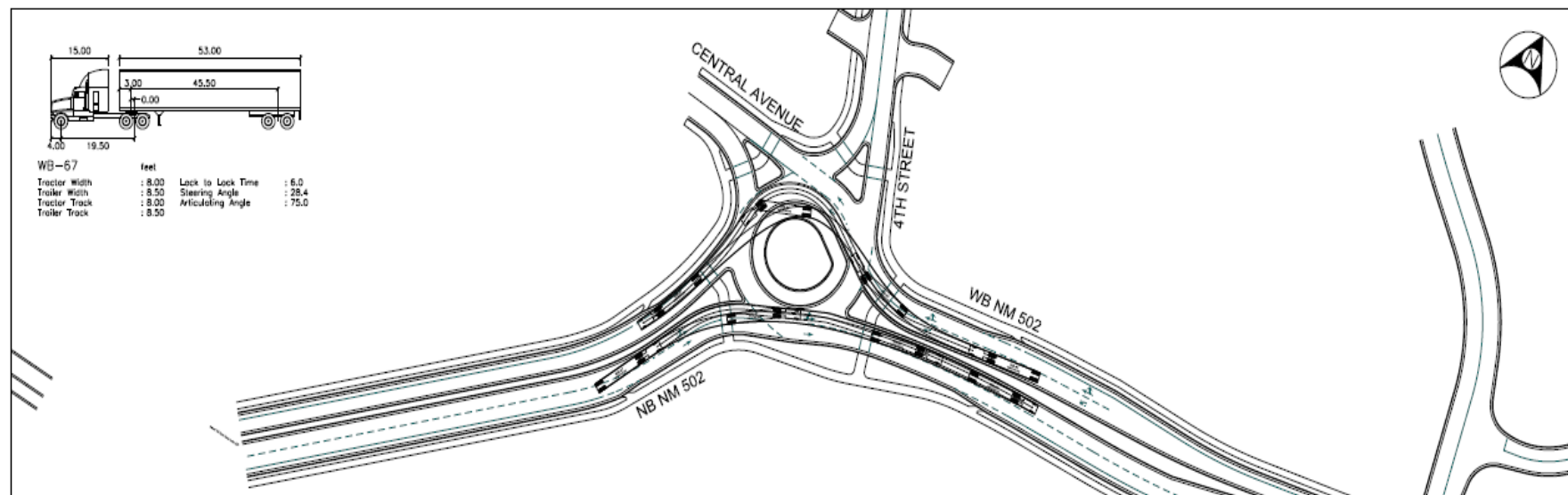
EXHIBIT: 1.3



WB-50	feet		
Tractor Width	: 8.00	Lock to Lock Time	: 6.0
Trailer Width	: 8.50	Steering Angle	: 17.7
Tractor Track	: 8.00	Articulating Angle	: 70.0
Trailer Track	: 8.50		



WB-67	feet		
Tractor Width	: 8.00	Lock to Lock Time	: 6.0
Trailer Width	: 8.50	Steering Angle	: 28.4
Tractor Track	: 8.00	Articulating Angle	: 75.0
Trailer Track	: 8.50		



NM 502 (TRINITY DRIVE) at CENTRAL AVENUE
LOS ALAMOS, NM

DESIGN VEHICLE - WB-50; WB 67

SCALE
0 50 100

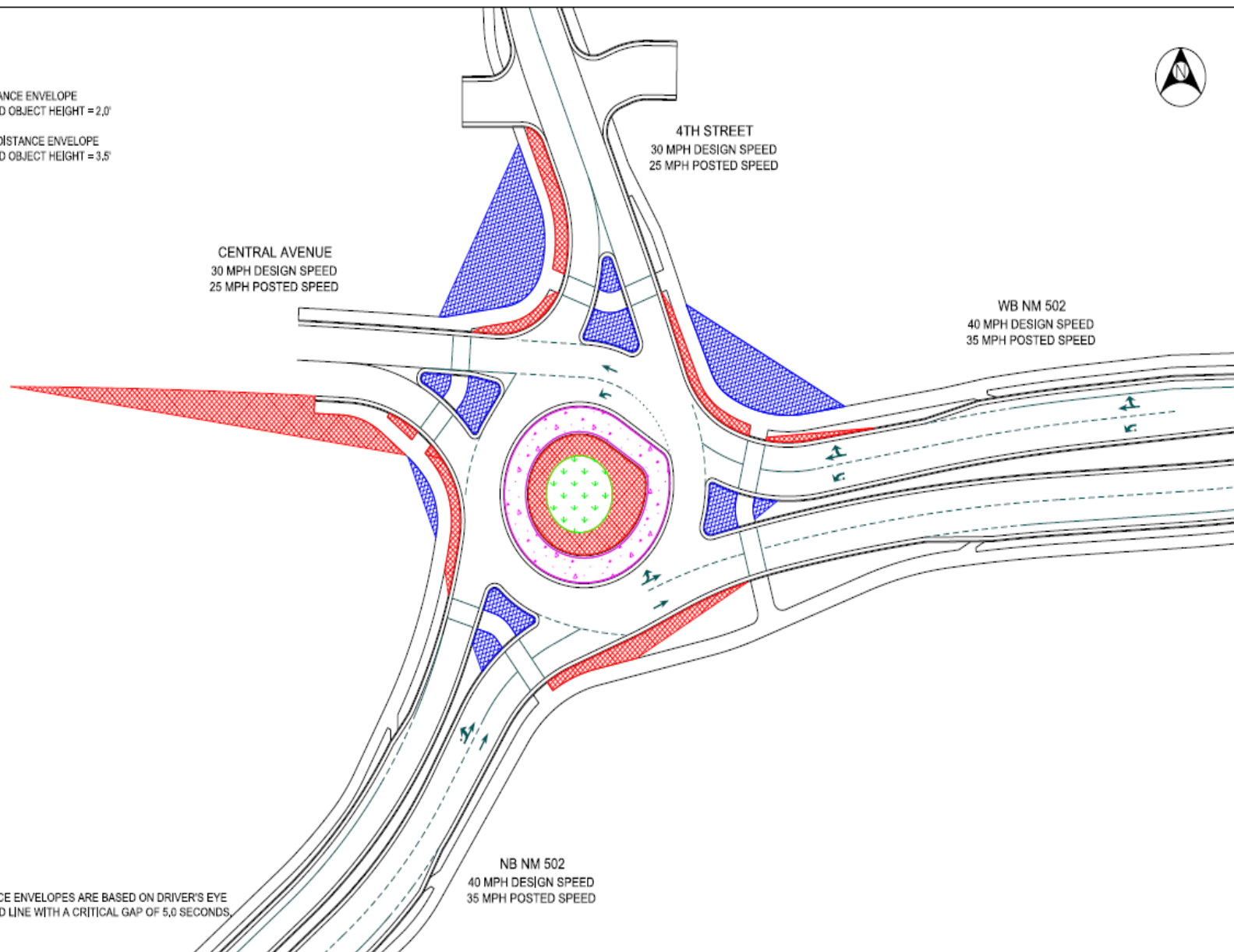
EXHIBIT: 1.2



GHD, Inc.
5325 Wilshire Blvd, Suite 2000
Tulsa, OK 74116
tmedison@ghd.com www.ghd.com

LEGEND

- TRUCK APRON
- STOPPING SIGHT DISTANCE ENVELOPE
DRIVER'S EYE = 3.5' AND OBJECT HEIGHT = 2.0'
- INTERSECTION SIGHT DISTANCE ENVELOPE
DRIVER'S EYE = 3.5' AND OBJECT HEIGHT = 3.5'
- UNRESTRICTED AREA



NOTES:
INTERSECTION SIGHT DISTANCE ENVELOPES ARE BASED ON DRIVER'S EYE
50 FEET BACK FROM THE YIELD LINE WITH A CRITICAL GAP OF 5.0 SECONDS.



GHD, Inc.
5350 Via de la Arroyo, Suite 200
Tucson, AZ 85705
www.ghd.com

NM 502 (TRINITY DRIVE) at CENTRAL AVENUE
LOS ALAMOS, NM

SIGHT DISTANCE ENVELOPES

SCALE
0 25 50

EXHIBIT: 1.4

HAWK SIGNALS

- ◉ High Intensity Activated Cross-walks
- ◉ Proposed Locations
 - East Pool Crossing
 - East Park Crossing
- ◉ Need to Meet Warrants
 - 20 Pedestrian per hour at any time
 - Currently only 12 Pedestrian Crossings in any hour
 - Canyon Trail Extension – Likely increase in Pedestrian traffic



6			
5			
4			
3			
2			
1			
NO.	DESCRIPTION	DATE	REMARKS

NEW MEXICO DEPARTMENT
OF TRANSPORTATION
NM 502, TRINITY DR
FROM KNECHT ST TO TEWA LP

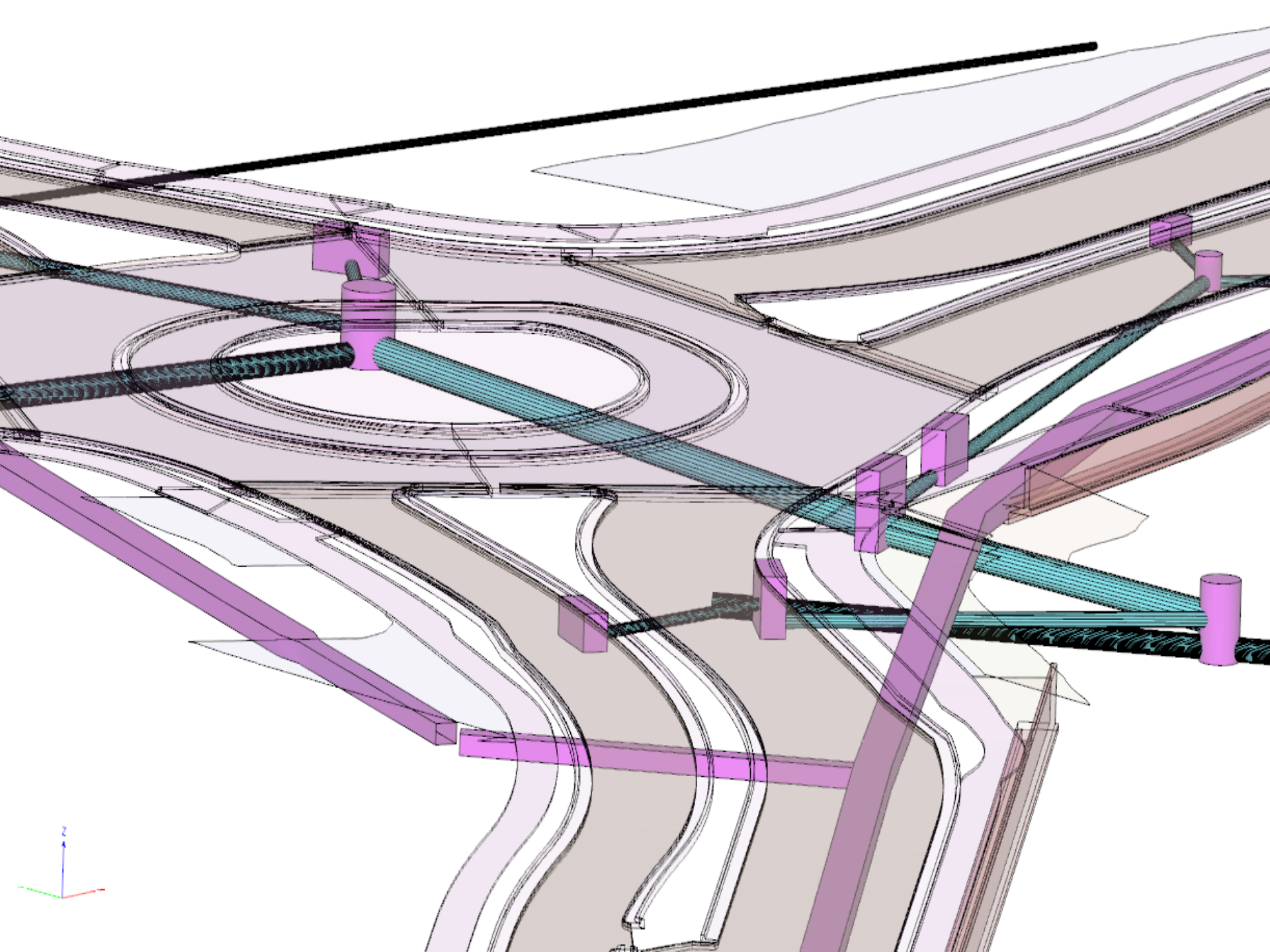
HAWK BEACON DETAILS
FOR MASTARM

STORM SEWER

- New Storm Drain System
 - Knecht to DP Road Already Complete
 - New Storm Drain System – DP Road to Tewa Loop

UTILITY RELOCATIONS/UPGRADES

- Utility Relocations and Upgrades
 - Coordination with LA County Utilities Department
 - Comcast, Century Link Relocations
 - Coordination with LANL



LANDSCAPING IMPROVEMENTS

◉ New Landscaping

- Roundabout
- Parkway Area (Between Curb & Sidewalk)
- Medians
- Pocket Park
- Right-of-Way (Between Sidewalk & Property Line)

◉ Irrigation System

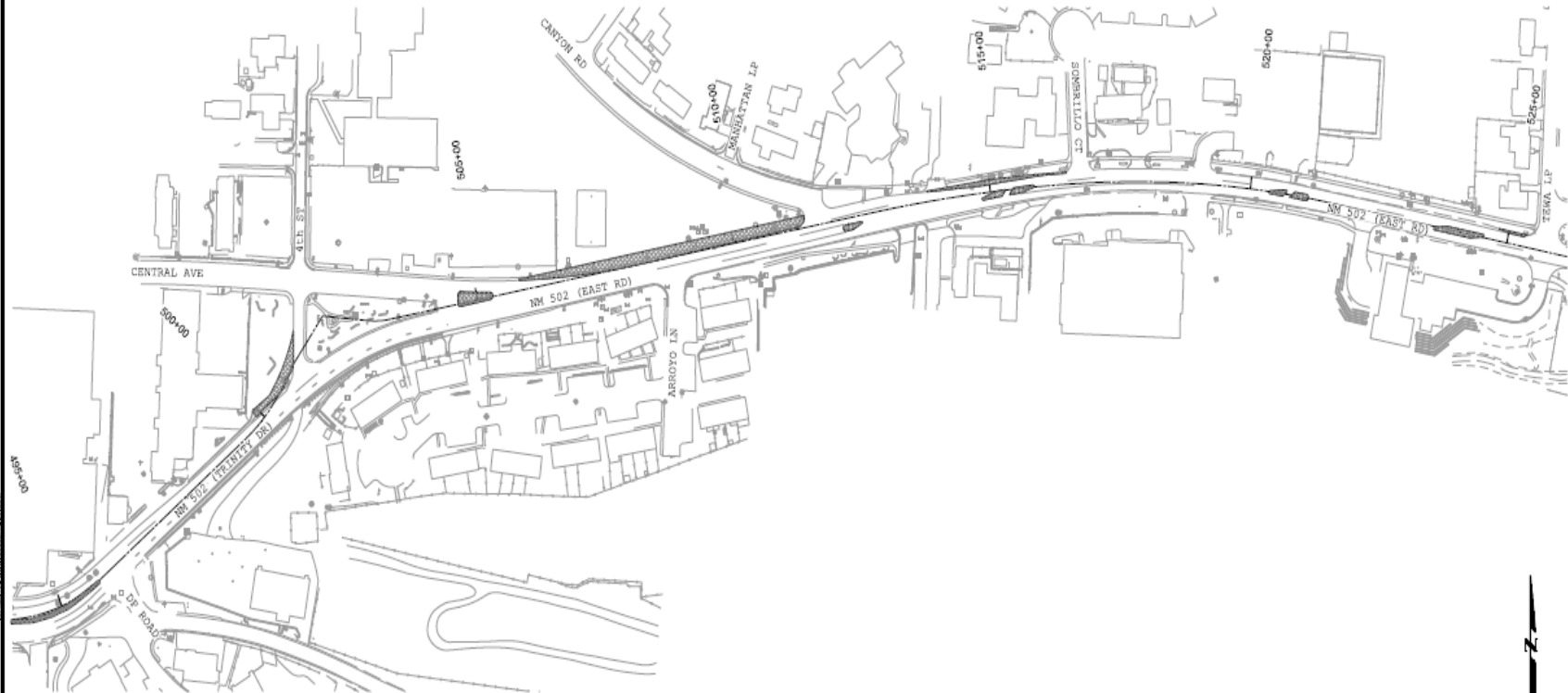
◉ Coordination with LA County Parks Department



MAINTENANCE OF TRAFFIC

● Objectives

- Maintain orderly traffic operations/Minimize delays
- Develop Phasing to allow for Constructability
- Maintain Public/Business Access
- Address Contractor Restrictions

**SUGGESTED SEQUENCE OF CONSTRUCTION****PHASE IA**

1. INSTALL BOPEOP STANDARD SIGNING PER NMDOT STANDARD 702-3-1/1, MAINTAIN THROUGHOUT ALL CONSTRUCTION PHASES.
2. REMOVE PIN CURB NM 502 STA. 494+50 TO DP RD TO ALLOW FOR TRAFFIC CROSS OVER.
3. PERFORM REMOVALS AND CONSTRUCT TEMPORARY PAVEMENT SECTION NM 502 STA. 500+00 TO 4TH ST SOUTH OF CENTRAL AVE TO ACCOMMODATE NM 502 EB SWEEP CONNECTION TO CENTRAL AVE PHASES I AND II.
4. REMOVE EXISTING RAISED MEDIANS AND CONSTRUCT TEMPORARY PAVEMENT SECTION ON NM 502 FROM STA. 504+00 TO EOP.
5. PERFORM MILLING AND OVERLAY OPERATIONS NM 502 BOP TO STA. 495+45 (OPERATIONS MAY BE PERFORMED THROUGHOUT THE PROJECT AND MAYBE PHASED AS NECESSARY TO OPTIMIZE TRAFFIC CONTROL AND PROJECT PHASING).

TRAFFIC

- NM502 EB: TRAFFIC WILL UTILIZE EXISTING PAVEMENT SECTION WITH TEMPORARY SIGNING AND STRIPING FOR MEDIAN WORK FROM STA. 504+00 TO EOP.
- NM 502 WB: TRAFFIC WILL UTILIZE EXISTING PAVEMENT SECTION WITH TEMPORARY SIGNING AND STRIPING FOR MEDIAN AND SHOULDER WORK FROM STA. 504+00 TO EOP.
- CENTRAL AVE: NO WORK THIS PHASE, TRAFFIC WILL UTILIZE EXISTING PAVEMENT SECTION.
- 4th ST NB: NO WORK THIS PHASE, TRAFFIC WILL UTILIZE EXISTING PAVEMENT SECTION.
- 4TH ST SB: TRAFFIC WILL UTILIZE EXISTING PAVEMENT SECTION WITH TEMPORARY SIGNING AND STRIPING FOR SHOULDER WORK FROM NM 502 TO CENTRAL AVE.
- CANYON RD AND MANHATTAN LP: NO WORK THIS PHASE, TRAFFIC WILL UTILIZE EXISTING PAVEMENT SECTION.

NOTE:

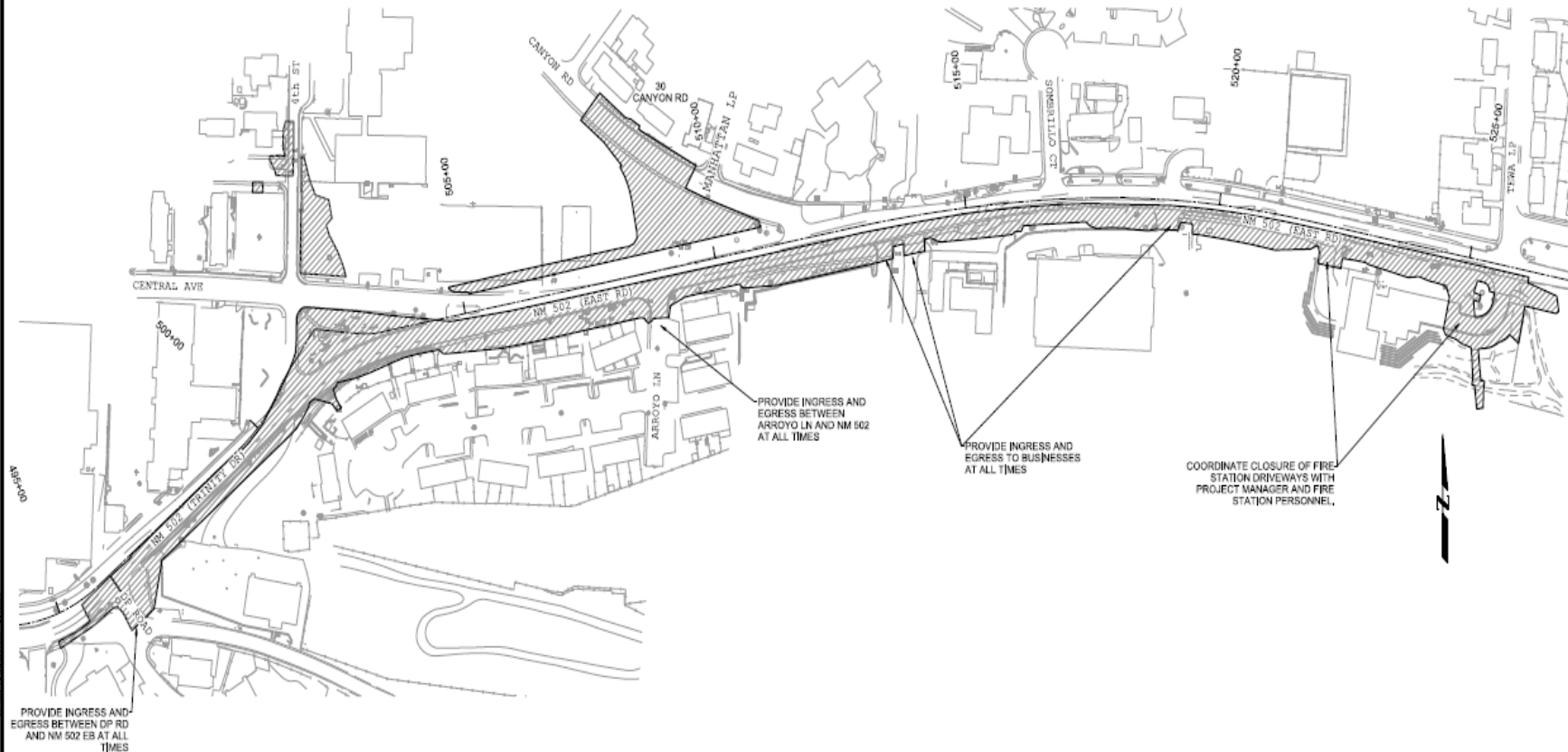
ACCESS TO CANYON ROAD FROM NM 502 TO REMAIN OPEN TO EMERGENCY VEHICLE TRAFFIC THROUGHOUT CONSTRUCTION.

NO.	DESCRIPTION	DATE	BY
1			
2			
3			
4			
5			

REVISIONS (OR CHANGE NOTICES)

NEW MEXICO DEPARTMENT
OF TRANSPORTATION
NM 502, TRINITY DR
FROM KNECHT ST TO TEWA LP
TEMPORARY TRAFFIC CONTROL
PHASING
PHASE IA LAYOUT

DRAWING SCALE: 1"=20'



PROVIDE INGRESS AND
EGRESS BETWEEN DP RD
AND NM 502 EB AT ALL
TIMES

SUGGESTED SEQUENCE OF CONSTRUCTION

PHASE I

1. MAINTAIN BOPEOP STANDARD SIGNING PER NMDOT STANDARD 702-3-1/1.
2. PERFORM REMOVALS AND INSTALL STORM DRAIN AND UTILITIES WITHIN PHASE I WORK ZONE.
3. CONSTRUCT EB NM 502 ROADWAY IMPROVEMENTS FROM STA. 495+45 TO EOP.
4. CONSTRUCT CANYON RD ROADWAY IMPROVEMENTS FROM NM 502 TO CANYON RD EOP.
5. CONSTRUCT 4th ST ROADWAY IMPROVEMENTS FROM CENTRAL AVE TO IRIS ST, CONSTRUCT TEMP PAVEMENT SECTION BETWEEN 4th ST ROUNDABOUT CONNECTION AND EXISTING CENTRAL AVE FOR USE IN PHASE IIA, CONSTRUCT 4th ST SB FROM IRIS ST TO 4th ST EOP, CONSTRUCT TEMP PAVEMENT FOR 4th ST ACCESS TO IRIS ST FOR USE IN PHASE IIA.
6. CONSTRUCT SD-19 AND FIRE STATION DRIVEWAY AND PEDESTRIAN TRAIL ACCESS EAST OF EOP.
7. CONTINUE MILLING AND OVERLAY OPERATIONS NM 502 BOP TO STA. 495+45 (OPERATIONS MAY BE PERFORMED THROUGHOUT THE PROJECT AND MAYBE PHASED AS NECESSARY TO OPTIMIZE TRAFFIC CONTROL AND PROJECT PHASING).

TRAFFIC

NM 502 EB: TRAFFIC WILL UTILIZE EXISTING NM 502 WB PAVEMENT FROM 495+45 TO 500+00, TEMP PAVEMENT FROM 500+00 TO 501+00, 4th ST FULL WIDTH FROM 501+00 TO CENTRAL AVE, CENTRAL AVE EB FROM 4th ST TO STA. 505+00 AND WB PAVEMENT/MEDIAN FROM 505+00 TO EOP.

NM 502 WB: TRAFFIC WILL UTILIZE EXISTING NM 502 WB PAVEMENT FROM EOP TO 511+50, TEMP PAVEMENT FROM 511+50 TO 505+00, CENTRAL AVE WB FROM 505+00 TO KNECHT ST, KNECHT ST SB FROM CENTRAL AVE TO NM 502.

CENTRAL AVE: NO WORK THIS PHASE, TRAFFIC WILL UTILIZE EXISTING PAVEMENT SECTION.

4th ST NB: TRAFFIC WILL UTILIZE EXISTING PAVEMENT SECTION WITH TEMPORARY SIGNING AND STRIPING FOR SHOULDER WORK FROM CENTRAL AVE TO IRIS ST.

4th ST SB: TRAFFIC WILL BE CLOSED AT 4th ST EOP TO NORTH HALF OF IRIS ST, SOUTH OF IRIS ST TRAFFIC WILL UTILIZE EXISTING PAVEMENT.

CANYON RD: WILL BE CLOSED TO THRU TRAFFIC AT CANYON RD EOP TO MANHATTAN LP, THRU TRAFFIC WILL BE DETOURED VIA MANHATTAN LP, ACCESS TO 30 CANYON RD MUST BE PROVIDED AT ALL TIMES, EMERGENCY VEHICLE ACCESS FROM NM 502 TO CANYON RD EOP MUST BE PROVIDED AT ALL TIMES.

MANHATTAN LP: TRAFFIC WILL UTILIZE EXISTING PAVEMENT SECTION.

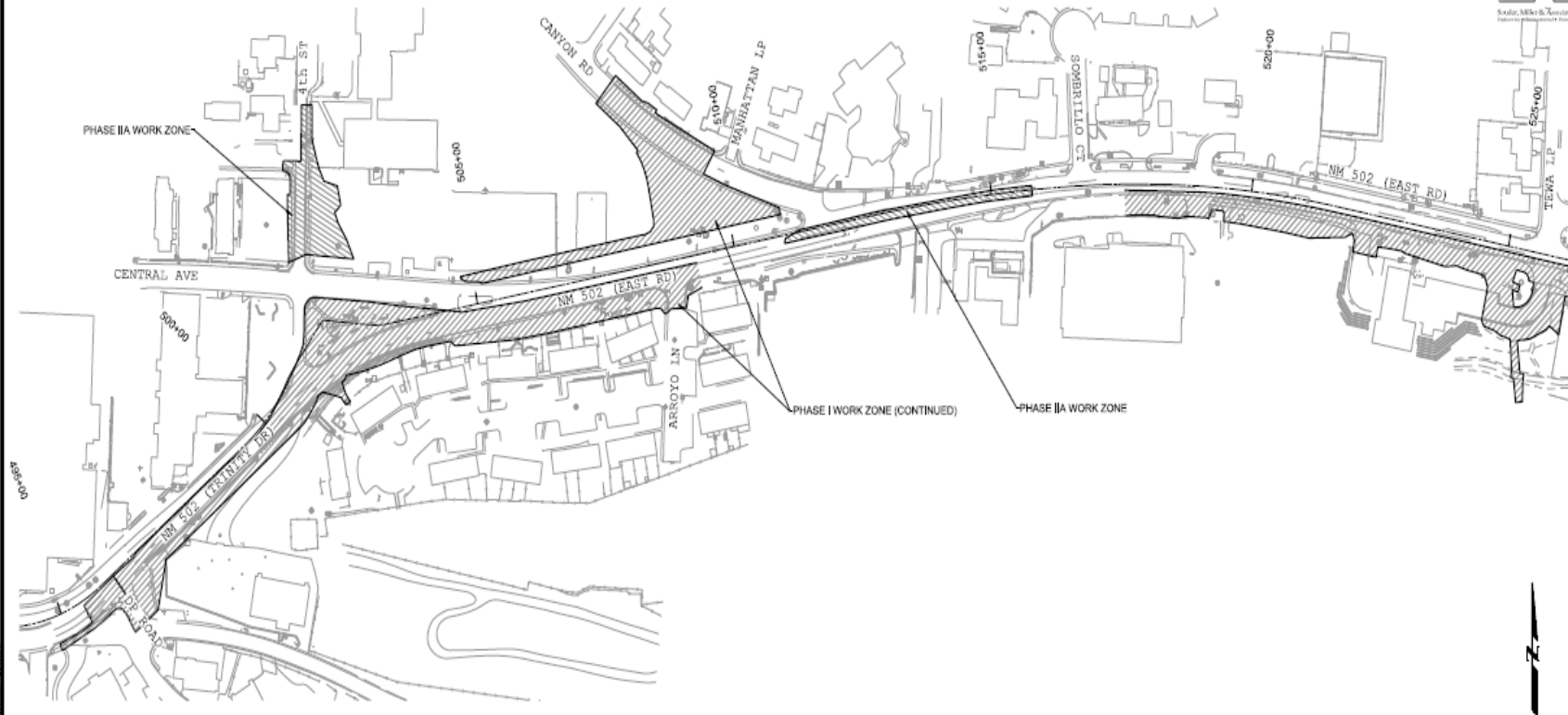
NOTE:
ACCESS TO CANYON ROAD FROM NM 502 TO REMAIN OPEN TO EMERGENCY VEHICLE TRAFFIC THROUGHOUT CONSTRUCTION.

NO.	DESCRIPTION	DATE	BY
1			
2			
3			
4			
5			
6			

REVISIONS (OR CHANGE NO.)

NEW MEXICO DEPARTMENT
OF TRANSPORTATION
**NM 502, TRINITY DR
FROM KNECHT ST TO TEWA LP**
TEMPORARY TRAFFIC CONTROL
PHASING
PHASE I LAYOUT

DRAWING SCALE: 1"=50'



PHASE IIA

- TRAFFIC:

NOTE:
ACCESS TO CANYON ROAD FROM NM 502 TO REMAIN OPEN TO
EMERGENCY VEHICLE TRAFFIC THROUGHOUT CONSTRUCTION.

6			
5			
4			
3			
2			
1			
NO.	DESCRIPTION	DATE	BY

REVISIONS (FOR CHANGE NOTICES)

DRAWING SCALE: 1:200



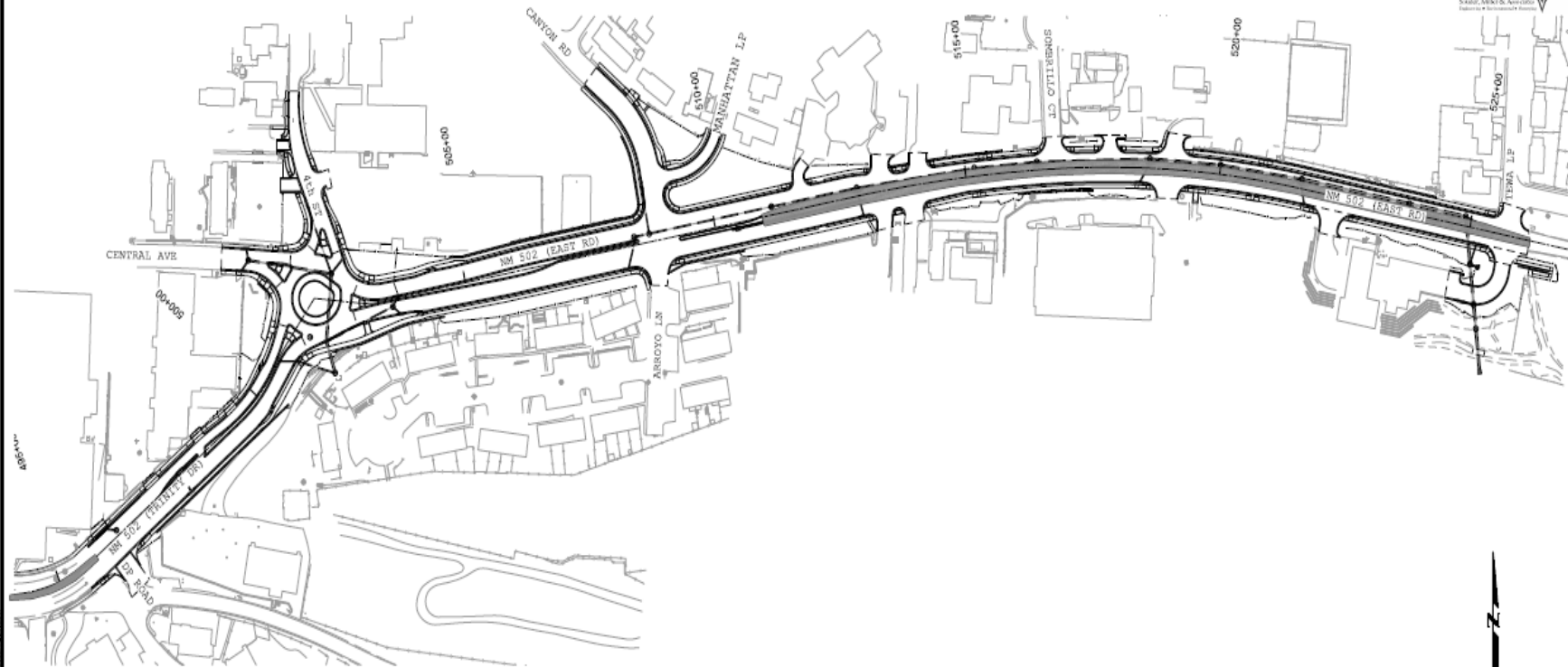
PHASE II

- TRAFFIC:

TEWA LP; CLOSED AT NM 502, TRAFFIC DETOURED VIA AIRPORT RD AND EAST DR.

REVISIONS (OR CHANGE NOTICES)

DRAWING SCALE: 1:200

**SUGGESTED SEQUENCE OF CONSTRUCTION****PHASE III**

1. MAINTAIN BOPEOP STANDARD SIGNING PER NMDOT STANDARD 702-3-1/1.
2. PERFORM REMOVALS AND INSTALL STORM DRAIN AND UTILITIES WITHIN PHASE III.
3. COMPLETE CONSTRUCTION OF NM 502 FROM STA. 511+00 TO EOP.
4. CONTINUE MILLING AND OVERLAY OPERATIONS NM 502 BOP TO STA. 496+45 (OPERATIONS MAY BE PERFORMED THROUGHOUT THE PROJECT AND MAYBE PHASED AS NECESSARY TO OPTIMIZE TRAFFIC CONTROL AND PROJECT PHASING).

TRAFFIC:

- ALL TRAFFIC OPEN.
- NM 502 EB & WB; RESTRICTED LEFT TURN MOVEMENTS FROM STA. 511+00 TO EOP.

NOTE:
ACCESS TO CANYON ROAD FROM NM 502 TO REMAIN OPEN TO EMERGENCY VEHICLE TRAFFIC THROUGHOUT CONSTRUCTION.

6			
5			
4			
3			
2			
1			
NO.	DESCRIPTION	DATE	BY

REVISIONS (OR CHANGE NOTICES)

NEW MEXICO DEPARTMENT
OF TRANSPORTATION
NM 502, TRINITY DR
FROM KNECHT ST TO TEWA LP
TEMPORARY TRAFFIC CONTROL
PHASING
PHASE III LAYOUT

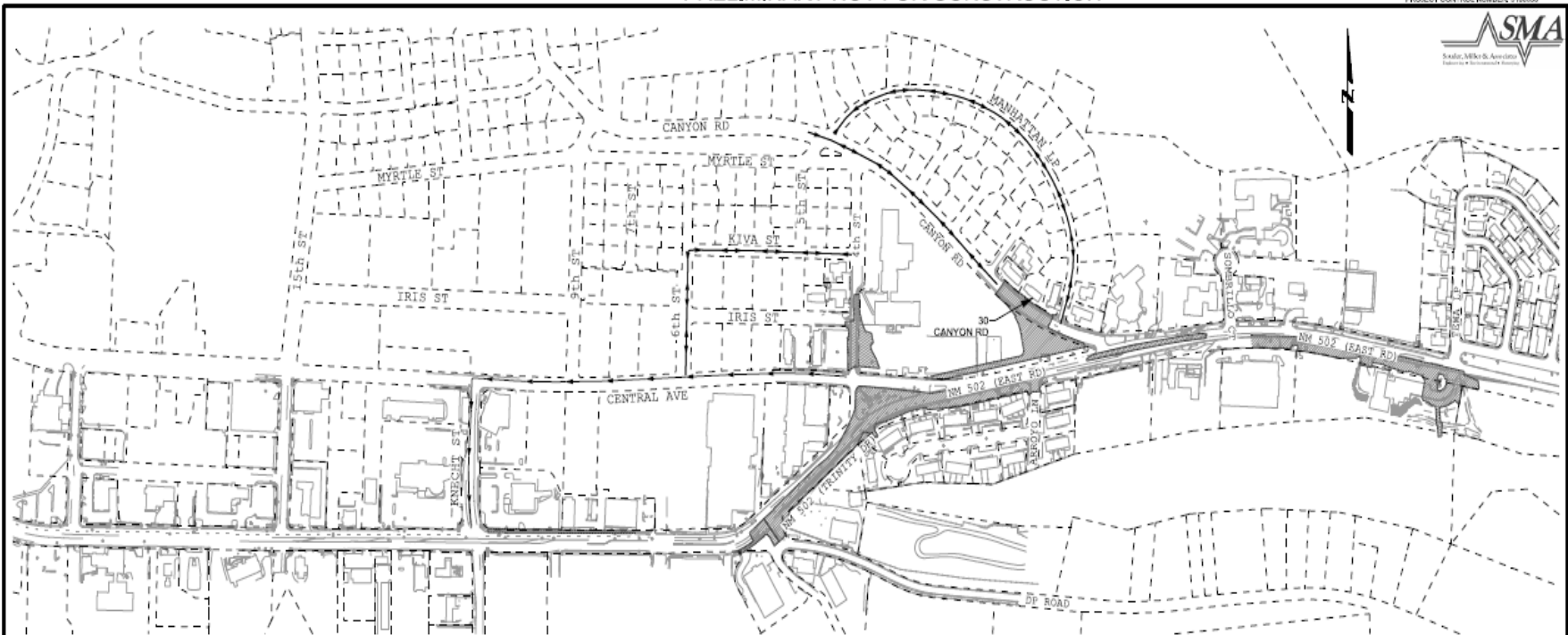
DRAWING SCALE: 1/2"=1'



SHEET NO. 6-9

PRELIMINARY NOT FOR CONSTRUCTION

NEW MEXICO DEPARTMENT
OF TRANSPORTATION
NM 502, TRINITY DR
FROM KNECHT ST TO TEWA LP
TEMPORARY TRAFFIC CONTROL
DETOURS
PHASE I LAYOUT



PRELIMINARY NOT FOR CONSTRUCTION

6			
5			
4			
3			
2			
1			
NO.	DESCRIPTION	DATE	BY

REVISIONS (OR CHANGE NOTICES)

NEW MEXICO DEPARTMENT
OF TRANSPORTATION
NM 502, TRINITY DR
FROM KNECHT ST TO TEWA LP
TEMPORARY TRAFFIC CONTROL
DETOURS
PHASE IIA LAYOUT

DRAWING SCALE: 1"=60'



PRELIMINARY NOT FOR CONSTRUCTION

6			
5			
4			
3			
2			
1			
NO.	DESCRIPTION	DATE	BY

REVISIONS (OR CHANGE NOTICES)

NEW MEXICO DEPARTMENT
OF TRANSPORTATION
**NM 502, TRINITY DR
FROM KNECHT ST TO TEWA LP**
TEMPORARY TRAFFIC CONTROL
DETOURS
PHASE II LAYOUT

DRAWING SCALE: 1"=60'

PENDING ISSUES

- ◉ Complete Design
- ◉ Verify HAWK Signal Warrants
- ◉ Property Owner Contacts > Ongoing
- ◉ Right-of-Way Acquisition
- ◉ Utility Design Plans
- ◉ Project Certifications

SCHEDULE

- ◉ Complete Design – June, 2015
- ◉ Project Certifications – June thru Dec., 2015
- ◉ Bid Project – Late 2015 or Early, 2016
- ◉ Start Construction – Spring, 2016

QUESTIONS





County of Los Alamos

Staff Report

March 05, 2015

Los Alamos, NM 87544
www.losalamosnm.us

Agenda No.: A.

Index (Council Goals): BCC - Quality, Essential, and Routine Services

Presenters: Randall Ryti, Chair of the Transportation Board

Legislative File: 6936-15

Title

Election of Chair and Vice Chair.

Recommended Action

I move that (insert name) be appointed Transportation Board Chair.

I move that (insert name) be appointed Transportation Board Vice Chair.

Body

The Boards and Commissions Rules indicate that each Board shall annually elect a Chair and Vice Chair from among its members. The Chair and Vice Chair will serve at the pleasure of the Board and will be eligible for election to subsequent terms.

The existing Chair shall call for nominations for Chair, followed by Board comments, and then a vote. The same process applies for the election of a Vice Chair.



County of Los Alamos

Staff Report

March 05, 2015

Los Alamos, NM 87544
www.losalamosnm.us

Agenda No.: B.

Index (Council Goals):

Presenters: Philo Shelton

Legislative File: 6961-15

Title

Proclamation Declaring April 9, 2015 "Stand Up for Transportation Day".

Recommended Action

I move the Transportation Board recommend Council approval of a Proclamation establishing Stand Up for Transportation Day on April 9, 2015 as presented.

Attachments

A - Proclamation Establishing Stand Up For Transportation Day

A PROCLAMATION ESTABLISHING
STAND UP FOR TRANSPORTATION
(A National Transportation Infrastructure Day)
IN LOS ALAMOS COUNTY
On April 9, 2015

WHEREAS April 9, 2015 marks the STAND UP FOR TRANSPORTATION DAY, a national transportation infrastructure day that highlights the critical need to invest in updating our nation's transportation infrastructure;

WHEREAS transportation is the economic backbone of our nation's economy and public transportation is an important part of our nation's transportation system, federal funding for public transportation infrastructure needs to increase and Congress needs to pass a long-term, multimodal transportation bill by May 31, 2015;

WHEREAS public transportation is a proven catalyst for economic growth since for every \$1 invested in public transportation, \$4 in economic returns is generated locally, creating economically vibrant and prosperous communities;

WHEREAS public transportation offers millions of Americans access to economic opportunities since nearly 60 percent of the trips taken on public transportation are for work commutes;

WHEREAS STAND UP FOR TRANSPORTATION DAY will be celebrated in small, medium, and large communities across the United States, as a day that highlights the critical need for funding transportation infrastructure, both public transportation and highway infrastructure;

THEREFORE BE IT RESOLVED THAT I, COUNTY CHAIR OF LOS ALAMOS COUNTY COUNCIL proclaim April 9, 2015 as STAND UP FOR TRANSPORTATION DAY IN LOS ALAMOS, NEW MEXICO and that LOS ALAMOS COUNTY will join public transportation agencies and business across the country to participate in STAND UP FOR TRANSPORTATION DAY to encourage greater federal investment in public transportation infrastructure;

ALSO BE IT RESOLVED THAT LOS ALAMOS COUNTY declares that quality public transportation services are essential for the economic prosperity of our country, our communities and for individuals;

ALSO BE IT RESOLVED THAT WHERE PUBLIC TRANSPORTATION GOES, COMMUNITY GROWS.

PASSED AND ADOPTED THIS ____ DAY OF _____, 2015.

Kristin Henderson, Council Chair



County of Los Alamos

Staff Report

March 05, 2015

Los Alamos, NM 87544
www.losalamosnm.us

Agenda No.: A.

Index (Council Goals): BCC - Quality, Essential, and Routine Services

Presenters: Philo Shelton, Public Works Director

Legislative File: 6937-15

Title

Public Works Staff/Project Update - February 2015

Attachments

A - Public Works Update - February 2015

In the Works....

Public Works Update – February 2015

Airport Division

Commercial Air Service

Responses to the Request for Qualifications for a new airline to fly between Los Alamos and Albuquerque are due by March 3. The selection committee will meet as soon as possible after that to rank the submittals based on their qualifications. It is anticipated that the entire ranking, negotiation, and approval process will take at least two months. We hope to have airline service restored in the May/June timeframe.

Future Airport Development Projects

The annual update to the Airport Capital Improvement Program (ACIP) for the airport is due to the FAA and the State by the end of March for projects anticipated to be undertaken for the next six years. In anticipation of a project in FY 2016 to replace a portion of the security fence around the airport, the documentation requesting an environmental Categorical Exclusion (CATEX) for the project has been submitted to the FAA. A response from the FAA is expected within the next few weeks.

Airport Landfill Remediation

Several years ago the Department of Energy filled in, paved, and installed five concrete pads on the old landfill that exists at the airport. The five concrete pads were to eventually serve as foundations for aircraft hangars. Since that time the landfill has settled in an unexpected manner making the construction of hangars on the pads impossible. In addition, the landfill has begun to generate methane gas. The DOE has done further studies that have shown that it will not be possible to stabilize the majority of the landfill sufficiently to enable the construction of hangars. The DOE is now formulating plans to remove the asphalt covering and the five pads to mitigate the production of the methane gas. As part of these plans it appears that it may be possible to stabilize the western edge of the landfill area enough to be able to construct one concrete pad for the eventual construction of hangars. It is anticipated that the final plans for the remediation of the landfill will be completed within the next few months.

Engineering Division

Central Ave. Improvements

Street furniture (bike racks) were installed on February 20th. All major work is complete with a few punch list items remaining which includes asphalt repairs and an isolated sewer line repair. This work will be scheduled for completion when weather conditions are favorable.

Western Area Road Reconstruction Phase 3

Currently under design by Engineering Staff in coordination with Public Utilities. A public meeting is scheduled for March 11th at Fuller Lodge. Construction bid advertisement is scheduled for March 15th. Tentative construction start date is June 1.

NM502/Trinity NMDOT Project

Engineering Staff continues to work with the NMDOT, Souder Miller & Associates, and Los Alamos Public Schools on the design of Central/4th/State Road 502 roundabout and right-of-way requirements. The NMDOT design team has informed staff that 90% construction drawings are scheduled for submission early March 2015, with a presentation to the Transportation Board on March 5. Construction contract bid letting anticipated for late 2015 with a spring 2016 construction start.

20th Street Improvements

The 20th Street Improvements Project is from Trinity Drive to Central Avenue. Improvements include removal and replacement of curb and gutter, new drainage structures, new asphalt pavement and new sidewalks and ramps to meet ADA standards with two new pedestrian crosswalks. Design currently in progress by Engineering Staff. A presentation to the Main Street Futures Committee is scheduled for March 9th and a public meeting is tentatively scheduled for late March 2015. It is anticipated project construction will occur during the Community Building/Teen Center renovation.

Fuller Lodge Parking Lot Improvements

Engineering Staff has begun design work for rebuilding the Fuller Lodge parking lot on the west side of Bathtub Row. This is the parking lot which has the large trash enclosures which service Fuller Lodge and the library. Improvements largely include reconstruction of the parking surface with isolated replacement of curb, gutter, sidewalk and ADA ramps. It is anticipated this project will be included as an additive bid alternate to the 20th Street Improvements Project due to their close proximity.

Ice Rink Improvements

Engineering has been working with Los Alamos National Laboratories to identify the limits to construct additional parking spaces. The County proposed to relocate the existing gate on Omega Road approximately 125 feet to the east of its current location, which has been accepted by DOE and LANL with a written agreement pending. This would allow for a total of 48 parking spaces added at the Ice Rink. The improvements will consist of new parking spaces, a walk path and lighting for safety. The design of the project is expected to continue once the overlying snow and ice melts to allow for completion of a topographic survey.

Canyon Rim Trail Project

The project consists of continuing the existing trail from Fire Station #6 west towards the new Smith's Marketplace. The design is comprised of a 10 ft. asphalt trail, retaining walls, handrail and a 180 foot bridge to span across DP Canyon. Wilson & Company, the engineering design consultant, has submitted 60% design plans for review with a review meeting scheduled for February 25, 2015. Design completion and construction start anticipated April 2015 and summer 2015, respectively.

Sherwood Blvd. Improvements

Improvements of Sherwood Blvd. include full reconstruction from NM 4 to the Cañada del Buey tributary, just north of Aztec Ave. Improvements consist of new asphalt driving surface including curb, gutter, landscaping, trees and 6 ft. sidewalks on each side of the roadway.

A public meeting was conducted on February 18, 2015 at the Activity Center in White Rock. Huitt-Zollars, the engineering design consultant, has submitted 90% design drawings for review. Construction is expected to start in late June/early July and completed late fall of 2015.

Environmental Services Division

Environmental Service Positions

Environmental Services Division is composed of 17 employees. There are currently two vacant positions which includes one superintendent and one laborer. The recruitment process is underway for the superintendent. Two equipment operator vacancies were filled by Andy Broadus and Donald Baros, as they joined the Environmental Services team on January 17th. We are thrilled to have the new additions on our team.

2015 Quarterly Update

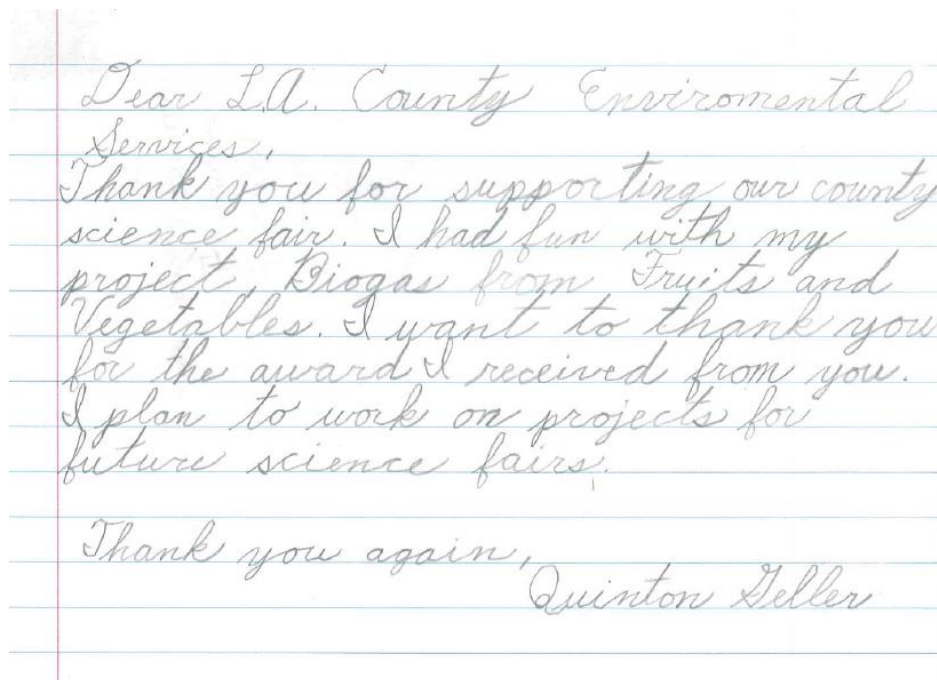
The winter quarterly brush and bulk item collection began January 5. Most of the materials collected at the curbside are Christmas trees. The Environmental Services Division is one week behind schedule due to the shortage in staff resources; however, we expect to complete this collection by end of the business week. To date we have collected 14 tons of trash and 17 tons of brush.

Landfill Cap Methane Mitigation

The mobile methane gas extraction system arrived mid-December and has been active for over 2 months. Due to the freezing temperatures we have experienced condensate freezing in the pipes that has restricted the system from functioning properly. SCS consultants has taken measures to combat the freezing temperatures. With this modification we expect to observe a negative vacuum pressure at each of the established vacuum points. The negative values indicate the methane extraction system is working as intended and extracting methane gas.

Los Alamos County Science Fair Kudos

The Environmental Sustainability Board sponsored the Los Alamos County Science Fair. The following note is from one of the participant winners, Quinton Geller.



Fleet Division

The Fleet Division maintained snow equipment through the recent snow events. The Fleet Shop will be closed from Thursday, March 12 through Friday, March 13 to allow Fleet mechanics to attend training. Chris Sena, Fleet Division Manager, and Rey Ann Nastacio, Senior Office Specialist, will be in the office. If you require emergency Fleet support on either of these days, please contact Chris Sena, Fleet Manager, at (505) 629-5925. Any maintenance scheduled for March 12 or 13 will be rescheduled for Saturday, March 14, from 6:00 a.m. to 2:30 p.m.

Thank you for your patience and cooperation as we ensure that our mechanics receive appropriate training to maintain the County's fleet.

Traffic and Streets Division

Pavement Preservation

An RFP for concrete replacement in White Rock has been issued and will be opened March 6th. Once the concrete work has been completed (end of May depending on weather), roadway work will begin using a Cutler process. A slurry seal for the roads in White Rock that were chip sealed last summer is tentatively scheduled for late May. Bridge maintenance work is scheduled for the bridge leading into the Canyon Glen community this spring. Specific scheduling for the bridge work will be weather dependent.

Traffic

Crews have been performing routine maintenance on signal cabinets, signs and street lights including the installation of new lighting along Central and the repair of an electrical vault in the Tsikumu Village on North Mesa. In addition, some of the crew members have been assisting with snow removal and taking advantage of training opportunities for sign making and FEMA.

Streets

Crews have been primarily working on preparing for snow removal, performing snow removal or cleaning up from snow removal operations. In addition to snow removal, crews have also been filling potholes, mitigating sight visibility issues or working on other work orders as they arise. Crews have also completed mandatory training required to be eligible for future FEMA mitigation grant funding.

Transit Division

Google Transit and AVL Updates

Atomic City Transit will be rolling out the Avail AVL (Automatic Vehicle Location) system officially on March 16, in partnership with NCRTD. The system will tentatively be called the "ACTracker". We are in the process of creating our marketing material, including utility bill stuffers which will be included in utility bills going out mid-March. The QR code, which will be placed on all marketing materials and bus stops, has been created, and our ACTracker logo is being finalized. The electronic route information sign at the library has been installed but is currently waiting on some power installations issues to be resolved before the sign is powered on.

Our Google Transit Feed is nearing completion, but some minor modifications are still necessary. We want to make sure all data is correct before this is made available to the public, so Transit staff and Google staff have been monitoring and testing the feed daily.

Comprehensive Transit Study and Five-Year Plan Update:

On Tuesday, February 10, Albert T. Stoddard, LSC Transportation Consultants presented the Comprehensive Transit Study and Five-Year Service Plan to County Council at their scheduled Work Session. After an in-depth discussion, feedback from the County Council was positive and supportive. The plan was also reviewed by the Delilah Garcia, NMDOT Transit and Rail Division Program Manager. Minor edits were recommended, and the final plan will be presented to the County Council for approval on March 31.

Kudos

From: Keith and Alyce Elliott
Sent: Tuesday, February 17, 2015 3:04 PM
To: Shelton, Philo

Mr. Shelton,

My name is Keith Elliott and I live at 3488 Ridgeway Dr. I am writing you about Daniel Erickson.

We have had a storm drain issue here for the last 35 years, and have contacted the county multiple times over the years, earlier this fall I noticed the county repairing curbs in our area.

The storm drains in the Denver steel area on 35th & Pueblo and 34th & Questa had been replaced with large back drop type drains about 10-12 years ago and at that time we were told that the drains at 35th & Ridgeway were going to be done also but never were. The drains at 35th & Ridgeway are/ were small grates about 16" x 24". Every time we received a good amount of moisture, the drains would plug with debris flooding my drive way all the way through my back yard into the Canyon. When I noticed the county doing some work down here I contacted Daniel Erickson about the drain in front of my house and talked to him about the problem we have had, he came by that same day to look at it and said that he could probably take care of it. The drain, curbing, and my driveway entrance were repaired within about a week!!! Daniel Erickson was Kind, Considerate, and Professional and promptly addressed the issue. The Los Alamos County could use a lot more people like him!!! I am writing you to commend Daniel for his prompt and Professional attitude toward me and my neighbors and for addressing this issue.

Thank You
Keith E. Elliott
3488 Ridgeway Dr.
Los Alamos, NM 87544
(505) 662-5114