



LOS ALAMOS

County of Los Alamos

Los Alamos, NM 87544
www.losalamosnm.us

Agenda - Final

Fuller Lodge Historic Districts Advisory Board

Wednesday, October 5, 2016

5:30 PM

Curtis Room

1. **CALL TO ORDER/ROLL CALL**

2. **PUBLIC COMMENT**

This section of the agenda is reserved for comments from the public on items that are not otherwise included in this agenda.

3. **FLHDAB BUSINESS (Items for Discussion and/or Possible Action)**

- A. [8671-16](#) Minutes from the Fuller Lodge Historic Districts Advisory Board Meeting on September 7, 2016.

Presenters: Mark Rayburn, Chair of the Fuller Lodge Historic Districts Advisory Board

Attachments: [09-07-2016 Draft Minutes](#)

- B. [8672-16](#) Fuller Lodge and Historic Area Wi-Fi Initiative

Presenters: Linda Matteson, Assistant to the County Manager

Attachments: [Downtown Public Wi-Fi Project Update](#)

- C. [8673-16](#) Re-Appointment of Leslie Linke to the Fuller Lodge/Historic Districts Advisory Board

Presenters: Mark Rayburn, Chair of the Fuller Lodge Historic Districts Advisory Board

- D. **Farewell and Appreciation to Melanie Sorsby**

4. **CHAIR REPORT**

- A. **Potential Assignment for Properties to Research**

5. **STAFF REPORT**

- A. [8675-16](#) Fuller Lodge Phases 2-4 and Historical Museum Updates

Presenters: Wayne Kohlrust, Project Manager

B. Recruitment

Hedy Dunn not re-applying for membership

6. INFORMATIONAL ITEMS

A. Date / Time for Next Meeting

*The next Board meeting will be on Wednesday, November 2, 2016
at 5:30pm in the Curtis Room at Fuller Lodge*

7. PUBLIC COMMENT

8. ADJOURNMENT

If you are an individual with a disability who is in need of a reader, amplifier, qualified sign language interpreter, or any other form of auxiliary aid or service to attend or participate in the hearing or meeting, please contact the County Human Resources Division at 505-662-8040 at least one week prior to the meeting or as soon as possible.

Public documents, including the agenda and minutes can be provided in various accessible formats. Please contact the personnel in Community and Economic Development Department at 505-662-8293 if a summary or other type of accessible format is needed.



County of Los Alamos

Staff Report

October 05, 2016

Los Alamos, NM 87544
www.losalamosnm.us

Agenda No.: A.

Index (Council Goals):

Presenters: Mark Rayburn, Chair of the Fuller Lodge Historic Districts Advisory Board

Legislative File: 8671-16

Title

Minutes from the Fuller Lodge Historic Districts Advisory Board Meeting on September 7, 2016.

Recommended Action

I move that the Board approve the Minutes for September 7, 2016 as submitted.

Attachments

A - Draft Minutes for September 7, 2016



County of Los Alamos

Los Alamos, NM 87544
www.losalamosnm.us

Minutes

Fuller Lodge Historic Districts Advisory Board

Wednesday, September 7, 2016

5:30 PM

Curtis Room

1. CALL TO ORDER/ROLL CALL

The meeting was called to order at 5:30pm. A quorum was present.

Present 6 - Vice Chair Hardy, Member Maldonado, Member Rayburn, Member Sorsby, Member Linke, and Member Bruell

Absent 1 - Member Dunn

2. PUBLIC COMMENT

Board member Linke stated that she noticed that there is no light on the flag pole at the Post Office and the flag is being flown in the dark. Wayne stated that he would see if he could talk to someone about this.

Board member Bruell asked if residents of Bath Tub Row are required to come before the Board when they erect structures on their property. Wayne explained that there is currently no process in place that requires that.

3. FLHDAB BUSINESS (Items for Discussion and/or Possible Action)

- A. [8583-16](#) Minutes from the Fuller Lodge Historic Districts Advisory Board Meeting on May 4, 2016.

Board member Linke asked that minor edits be made to the minutes.

Board member Sorsby moved that the minutes be approved as amended. Board member Linke seconded and the motion passed unanimously.

- B. [8584-16](#) Walking Tour Signage Presentation by Heather McClenahan, Executive Director of the Historical Society and Linda Matteson, Assistant to the County Manager

Heather McClenahan, Executive Director of the Historical Society, explained that they are in the process of re-doing the walking tour signage. Currently the signs are all portrait and they will be changing to landscape and they will be larger. Los Alamos County will be purchasing the signs and the Parks Division will install the signs. Mrs. McClenahan went through a location map of where all the signs will be posted and how the different signs will read. In the Historic District the signs will have Santa Fe Brown gravel at the base. Board members were given the opportunity to ask questions and make comments.

- C. [8585-16](#) Comprehensive Plan and Historic Elements Presentation by the Planning and Zoning Commission

4. CHAIR REPORT

5. STAFF REPORT

A. [8586-16](#) Update on Fuller Lodge Phases 2-4 and Historical Museum Improvements Project.

Lodge - the floors in the Zia and Throne Room have had the wood floors laid and finished. The wood floor leading to the West Wing has been re-finished. All of these floors look great. The Elevator modifications needed for Room 233 are completed and the floor will be refinished once the new door is installed. The new elevator shaft is in place and the fire sprinkler and plumbing line relocations as well as the structural steel column relocation are completed. The elevator itself arrived Monday Aug 29 its various crates and construction of the actual elevator are beginning that week also. The steps, ramp and approach have been removed and placement will begin soon - we encountered a lot of mud and the recent rains that happened after removal didn't help. Means to drain "the swamp" are underway. The basement steps have also been removed and we are working thru a drain problem there. The small screen wall in the corner where the gas meter was located has been approved by SHPO for removal and will open up the corner nicely. We had to remove it in order to build the basement retaining wall and rather than replace it, it is being just removed. Work to try and install Wi-Fi to the building have started with the installation of a conduit in the elevator shaft cavity to the 3rd floor to allow for a system to be installed in that space at a later date. The door for the reservation office are tied to the rest of the door replacements into one package - Arrival is set for mid-September. A new painting contractor was brought on board in late August. This proved to be very difficult, to find a contractor will good experience with some of the repairs and painting. The GC will be self-performing a good deal of the hardware and wood repairs also.

Museum - the new HVAC units have been set on the west side and the new screen fence and gate is installed. The new electric service was energized the week of Aug 29. The fire alarm panel relocation should also be done that week. The final lighting package was agreed upon and the new lighting will go in during the month of September, along with replacement of the ceilings in a number of the areas. Window treatments have been determined and are in process. We are working thru placing a sidewalk/landing at the north end of the Museum and tying in a new driveway for drainage. Flagstone installation in the front is on-going. The new sidewalk is also in. The restroom is almost complete. The new ramp and accompanying "pony" wall have been installed. The new support structure for the 109 Palace gate is on-going. A new concrete topping slab for the north wing will be installed in September.

Overall the project is about a week behind schedule with the window work a little more but the contractor will attempt to bring is in by the planned end of October.

B. [8587-16](#) Historic Preservation Ordinance Introductory Discussion

About 10 years or so ago, a list was compiled of potential significant locations and features throughout the County was compiled. The thought at the time was that once a Historical Preservation Ordinance was passed, the Board could review the list, work with the property owners where they were situated, develop criteria for their inclusion (if desired) and recommend them to Council. The purpose of this item is to have the Board begin to think about how it might tackle this.

6. INFORMATIONAL ITEMS

A. Date/Time for Next Meeting

The next Board meeting will be on Wednesday, October 5, 2016 at 5:30pm, in the Curtis Room at Fuller Lodge.

7. PUBLIC COMMENT

Nancy Bartlit, Resident, asked if a plaque that explains the history of the Green Room could be hung in the Green Room. She stated that she is willing to work with the Board to create something. Mr. Kohlrust stated that we will put this request on the agenda for October to discuss. Mrs. Bartlit also asked if she could email staff the name of a company that she used to re-upholster her furniture as a possible company to do the upholstery work on the chairs in the Lodge. Mr. Kohlrust stated that she could email him the information but that they would have to go through the bid process.

8. ADJOURNMENT

The meeting adjourned at 6:58pm.

Board member Sorsby moved that the meeting adjourn. Board member Hardy seconded and the motion passed unanimously.

If you are an individual with a disability who is in need of a reader, amplifier, qualified sign language interpreter, or any other form of auxiliary aid or service to attend or participate in the hearing or meeting, please contact the County Human Resources Division at 505-662-8040 at least one week prior to the meeting or as soon as possible.

Public documents, including the agenda and minutes can be provided in various accessible formats. Please contact the personnel in Community and Economic Development Department at 505-662-8293 if a summary or other type of accessible format is needed.



County of Los Alamos

Staff Report

October 05, 2016

Los Alamos, NM 87544
www.losalamosnm.us

Agenda No.: B.

Index (Council Goals):

Presenters: Linda Matteson, Assistant to the County Manager

Legislative File: 8672-16

Title

Fuller Lodge and Historic Area Wi-Fi Initiative

Attachments

Attachment A: Downtown Public Wi-Fi Project Update

MNHP Wireless Project

Fuller Lodge modifications

Presented to Fuller Lodge Historic Advisory Board-October 2016

Project Sponsor: County Manager

Project Management: ASD-Information Management

The purpose of the Manhattan National Historic Park Wireless Project is to cover the majority of the downtown walking tour with wireless functionality. Manhattan National Historic Park wireless will require placement of access points on the exterior and interior of Fuller Lodge. Placement of the access points will be crucial to wireless coverage for the area around Fuller lodge as well as the extension of wireless inside the lodge. The purpose of this request is to receive approval for installation of outdoor and indoor access points as described below.

The interior devices proposed in this request are the Aruba 270 series outdoor access points.

These will be placed inside the attic area of Fuller Lodge and not visible to the public, they will be utilized to push the signal to the three outdoor antenna devices placed on the chimney.

Outdoor Antenna proposed are the ANT3x3 D100 type devices. Traditional mounting of this device calls for a pole mounted installation, this mounting will be modified to mount as flush to the chimney as possible with allowance for cable behind the antenna. Attached to this summary you will find data sheets on the proposed hardware as well as the proposed path of exterior cabling and hardware placement.

- **Interior Access Points** - No modifications of the building are required for the internal access points. Existing internal conduit will be used from the basement to the third floor. Existing metal tubing will be used to exit the building. Please See attached data sheet: "Aruba 270 Series Outdoor Access Points"
 - Access points would be placed in the 3rd floor attic area of Fuller Lodge
 - Cabling would be run using existing conduit from the basement to the 3rd floor
 - Cabling from Access point to antenna devices would be utilizing the existing metal pipe to the outside.
- **Exterior Antennas** – Aruba 270 series– Three antennas will be mounted to the South Side Chimney. The antennas will be as flush mounted as possible while still maintaining access to the cables from the rear. All cables and antennas are proposed to be painted to match the corresponding exterior surfaces. Please See attached data sheet: "Aruba outdoor mimo antenna"
 - 3 exterior antenna devices are required for omnidirectional coverage.
 - Rock chimney on the south side of the bell tower would be used.
 - Antenna devices would be mounted on the top third of the chimneys.
 - Antenna color can be changed, avoiding lead or metal based paints
- **Cabling**
 - Each antenna device requires 3 outdoor rated cables and would follow the ridge lines and edges of the chimney.
 - Outdoor cabling can be painted to closely match the area.
 - Cabling for each antenna will be secured to follow the ridge line and chimney.
- **Mounting**
 - Each antenna would require a modified mounting bracket to mount as flush to the chimney allowing room for each cable.
 - Each antenna mounting bracket would require drilling into the chimney
 - Existing conduit from the attic to the outside of the building will be modified to include environmental protection and fire caulk.

DATA SHEET

ARUBA 270 SERIES OUTDOOR ACCESS POINTS

Setting a higher standard for 802.11ac

Innovative and aesthetically-designed 270 series outdoor wireless access points deliver gigabit Wi-Fi performance to 802.11ac mobile devices under any weather conditions. The 270 series is also the only outdoor AP that enables 802.11n clients to operate three-times faster at greater distances.

Purpose-built to survive in the harshest outdoor environments, 270 series APs withstand exposure to extreme high and low temperatures, persistent moisture and precipitation, and are fully sealed to keep out airborne contaminants. All electrical interfaces include industrial-strength surge protection.

With a maximum data rate of 1.3 Gbps in the 5-GHz band and 600 Mbps in the 2.4-GHz band, 270 series outdoor APs supports concurrent dual-radio operation at speeds that greatly exceed Fast Ethernet.

WI-FI CLIENT OPTIMIZATION

To eliminate sticky client behavior and ensure consistently high performance, every Aruba AP includes ClientMatch technology, which gathers session performance metrics that steer mobile devices to the best AP and radio on the WLAN in real time.

UNIQUE BENEFITS

- Innovative industrial design
- Eliminates installation complexity
- Inconspicuous design that improves aesthetics
- Delivers IP66- and IP67-rated protection from the elements
- Best-in-class RF management
 - Integrated Adaptive Radio Management technology manages the 2.4-GHz and 5-GHz radio bands and ensures that APs stay clear of RF interference



- Reliable and predictable Wi-Fi performance
- Patented ClientMatch technology ensures that roaming clients associate with the best AP to maximize performance
- AppRF technology identifies and prioritizes applications on the network
- Spectrum analysis
 - Capable of part-time or dedicated spectrum analysis, which scans the 2.4-GHz and 5-GHz radio bands to identify sources of RF interference
- Limited lifetime warranty – an industry first for outdoors

CHOOSE YOUR OPERATING MODE

The 270 series of outdoor APs offers a choice of operating modes to meet your unique management and deployment requirements.

- Controller-managed AP or Remote AP (RAP) running ArubaOS. When managed by Aruba Mobility Controllers, the 270 series offers centralized configuration, data encryption, policy enforcement and network services, as well as distributed and centralized traffic forwarding.
- Aruba Instant AP running InstantOS. In Aruba Instant mode, one AP automatically distributes the network configuration to other APs. Just power-up one Instant AP, configure it over the air, and plug in the other APs – the entire process takes about five minutes.
- Secure enterprise mesh

DATA SHEET

ARUBA OUTDOOR MIMO ANTENNA

ANT-3x3-D100

ANT-3x3-D100 is a multi polarized antenna with 90° H x 90° V beamwidths. This antenna is well suited for 2.4 and 5 GHz sector coverage for access.

FREQUENCY/MIN GAIN

- 4.9-6.0 GHz/5 dBi min
- 2.4-2.5 GHz/5 dBi min

DIMENSIONS

- 200 x 200 x 33 mm (7.9 x 7.9 x 1.25 inches)

POLARIZATION

- V, and slant +/- 45°

WEIGHT (WITHOUT BRACKET)

- 0.8 kg (1.76 lbs)

BEAMWIDTH

- Horizontal plane: 100°
- Vertical plane: 90°

HOUSING

- Housing: Aluminum
- Radome: Plastic

IMPEDANCE

- 50 ohms

CONNECTORS

- N-type female x3

MAXIMUM INPUT POWER

- 20 watts

OPERATING TEMPERATURE

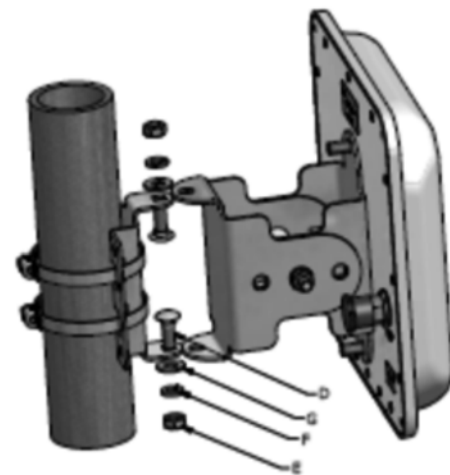
- -45°C to +70°C

VSWR

- 2:1 max

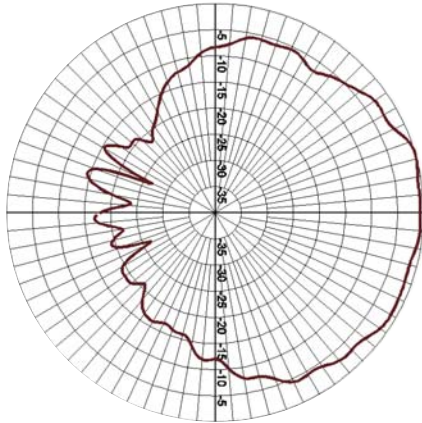
INSTALLATION HARDWARE

- Mount kit for wall and pole included

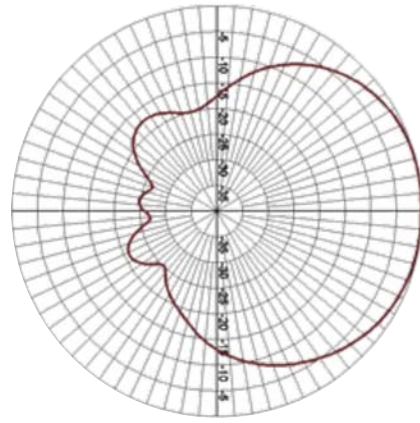


ANTENNA PATTERN PLOTS

Vertical pattern

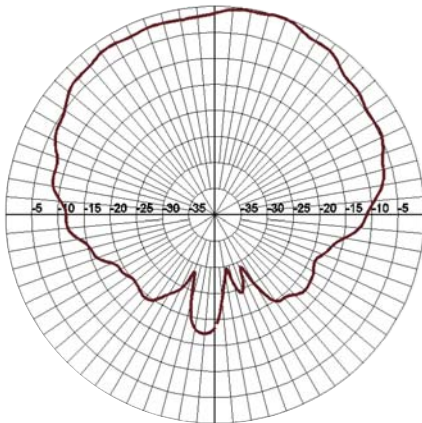


5 GHz

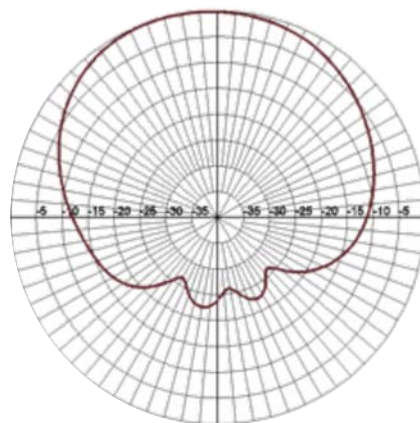


2.4 GHz

Horizontal pattern



5 GHz



2.4 GHz

Proposed External Cabling and Antenna Placement:

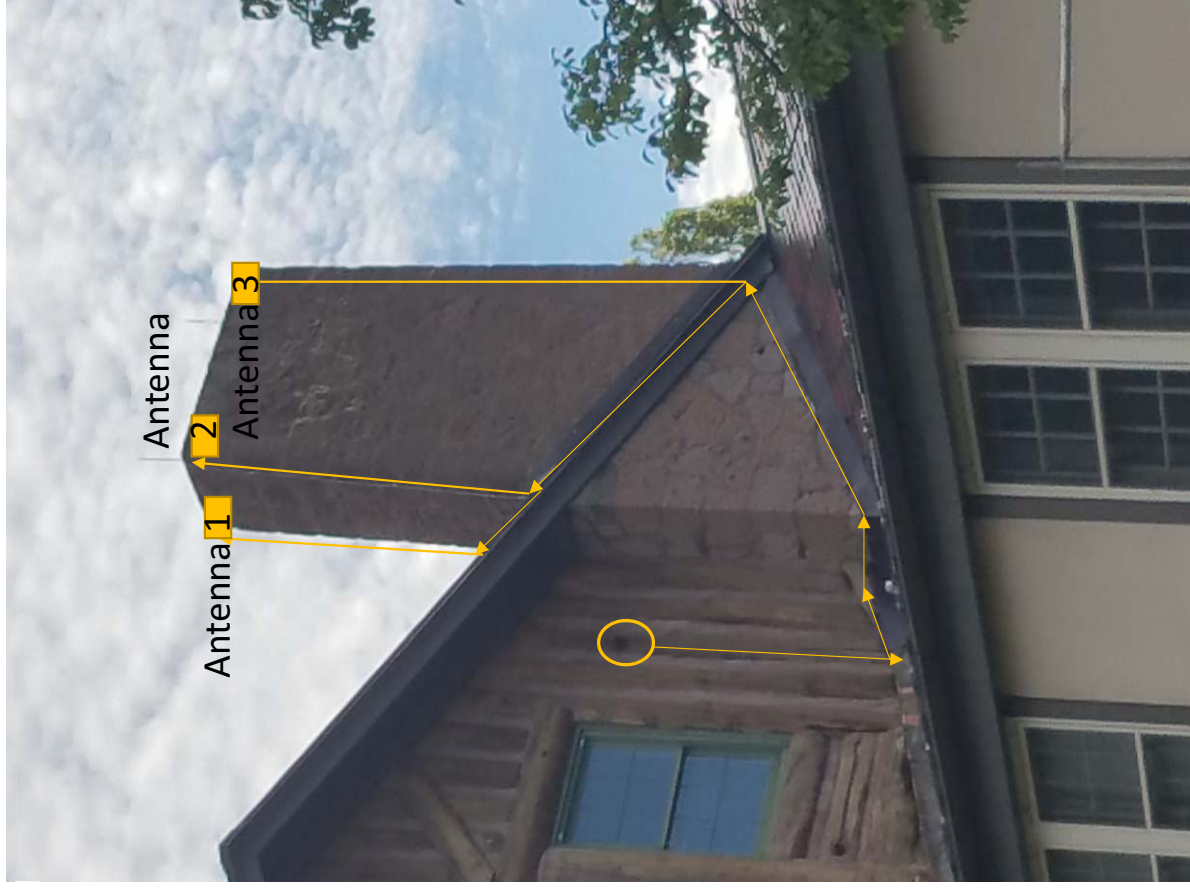
3 external rated wireless antennas flush mounted on chimney

Cabling to exit building at existing metal conduit with L bracket added for physical protection of the cable.

Cabling to burrow into existing façade from exit point and along eaves to chimney.

Cable will be secured with building appropriate material.

All cable, Access points and mounting equipment will be painted to camouflage into exterior.





County of Los Alamos

Staff Report

October 05, 2016

Los Alamos, NM 87544
www.losalamosnm.us

Agenda No.: C.

Index (Council Goals):

Presenters: Mark Rayburn, Chair of the Fuller Lodge Historic Districts Advisory Board

Legislative File: 8673-16

Title

Re-Appointment of Leslie Linke to the Fuller Lodge/Historic Districts Advisory Board



County of Los Alamos

Staff Report

October 05, 2016

Los Alamos, NM 87544
www.losalamosnm.us

Agenda No.: A.

Index (Council Goals):

Presenters: Wayne Kohlrust, Project Manager

Legislative File: 8675-16

Title

Fuller Lodge Phases 2-4 and Historical Museum Updates

.Body

Fuller Lodge:

- Elevator - the elevator equipment has been installed. Once the surrounding walls, etc. have been completed, the elevator sub will be back to fine-tune it.
- Work continues to replace the steps and retaining wall to the basement near the kitchen.
- A new window sub-contractor is on the job and has completed the painting of the North Wing, South Wing exterior on the east side and is progressing through the west elevation and will be moving to the West Wing. The new storm/screen windows are in production.
- Doors for the Reservation Office have hit a snag. The door contractor's shop was struck by lightning in early September and they have not been back in operation since. R&M is looking into alternatives.
- Work to replace the stairs, ramp and flagstone area, plus add snow melt on the west side has begun. The flagstone has been cut and the mortar bed is beginning to go in to anchor the stones. The stairs, ramp and sidewalk are progressing. The submittal for the snow melt has been finalized and will be sent to the architect for approval so this work can be completed within about 2 weeks, weather dependent. Signs have been placed to route people around Fuller to the east side.

Museum

- The final lighting package will begin to be installed the week of Sep 26.
- One of the artifacts going into the north area is the 109 Palace Gate, the gate that anyone coming to work at the Lab during the Manhattan era would have to pass through. A wall has been built to encase the gate for display.
- New flagstone is set for the front area. New Railings are in production.
- The interior walls are being painted
- The new restroom is about 90% complete.

Overall the project is close to back on schedule - still looking to finish at the planned end of October.