



LOS ALAMOS

County of Los Alamos

Los Alamos, NM 87544
www.losalamosnm.us

Agenda - Final

Fuller Lodge Historic Districts Advisory Board

*Mark Rayburn, Chair; Becky Hardy, Vice Chair; Marjorie Bruell;
Hedy Dunn; Leslie Linke; and Jorge Maldonado*

Wednesday, February 1, 2017

5:00 PM

Fuller Lodge - Curtis Room

1. **CALL TO ORDER/ROLL CALL**

2. **PUBLIC COMMENT**

This section of the agenda is reserved for comments from the public on items that are not otherwise included in this agenda.

3. **FLHDAB BUSINESS (Items for Discussion and/or Possible Action)**

A. **Selection of Chair and Vice Chair**

- B. [9051-17](#) Minutes from the Fuller Lodge Historic Districts Advisory Board Meeting on December 7, 2016.

Presenters: Mark Rayburn, Chair of the Fuller Lodge Historic Districts Advisory Board

Attachments: [December 7, 2016 Draft Minutes](#)

C. **Farewell and Acknowledgment of Member Hardy and Member Bruell**

D. **Green Room Plaque Installation**

- E. [9052-17](#) Recommendation to remove shed at Stone Cottage (Red Cross Building)

Presenters: Mark Rayburn, Chair of the Fuller Lodge Historic Districts Advisory Board

Attachments: [SHPO Letter](#)

F. **Changes to Fuller Lodge Board**

G. **Recommendation for Downtown Historic District Boundaries**

H. **Selection of a Board Member to work with the Parks and Recreation Department.**

4. CHAIR REPORT

5. STAFF REPORT

A. Fuller Lodge and Museum Project Updates

B. FY18 Work Plan

6. INFORMATIONAL ITEMS

A. Date / Time of Next Board Meeting

*The Next Board Meeting Will Be On Wednesday, March 1, 2017 in
The Throne Room at Fuller Lodge*

7. PUBLIC COMMENT

8. ADJOURNMENT

If you are an individual with a disability who is in need of a reader, amplifier, qualified sign language interpreter, or any other form of auxiliary aid or service to attend or participate in the hearing or meeting, please contact the County Human Resources Division at 505-662-8040 at least one week prior to the meeting or as soon as possible.

Public documents, including the agenda and minutes can be provided in various accessible formats. Please contact the personnel in Community and Economic Development Department at 505-662-8293 if a summary or other type of accessible format is needed.



County of Los Alamos

Staff Report

February 01, 2017

Los Alamos, NM 87544
www.losalamosnm.us

Agenda No.: B.

Index (Council Goals):

Presenters: Mark Rayburn, Chair of the Fuller Lodge Historic Districts Advisory Board

Legislative File: 9051-17

Title

Minutes from the Fuller Lodge Historic Districts Advisory Board Meeting on December 7, 2016.

Recommended Action

I move that the Board approve the Minutes for December 7, 2016 as submitted.

Attachments

A - Draft Minutes for December 7, 2016



County of Los Alamos

Los Alamos, NM 87544
www.losalamosnm.us

Minutes

Fuller Lodge Historic Districts Advisory Board

*Mark Rayburn, Chair; Becky Hardy, Vice Chair; Marjorie Bruell; Hedy Dunn; Leslie Linke;
Jorge Maldonado; and Melanie Sorsby*

Wednesday, December 7, 2016

5:30 PM

Curtis Room

1. CALL TO ORDER/ROLL CALL

Present 5 - Vice Chair Hardy, Member Maldonado, Member Rayburn, Member Bruell, and Member Linke

Absent 2 - Member Dunn, and Member Sorsby

Present 5 - Vice Chair Hardy, Member Maldonado, Member Rayburn, Member Bruell, and Member Linke

Absent 2 - Member Dunn, and Member Sorsby

A. Moment of Silence in Remembrance of Pearl Harbor Day

2. PUBLIC COMMENT

None

3. FLHDAB BUSINESS (Items for Discussion and/or Possible Action)

A. [8871-16](#) Minutes from the Fuller Lodge Historic Districts Advisory Board Meeting on Wednesday, November 2, 2016.

Board members requested that a few minor edits be made to the minutes.

Chair Rayburn moved that the minutes be approved as amended. Member Bruell seconded and the motion passed unanimously.

B. Green Room Commemoration Plaque

Member Linke moved that this item be postponed to the January meeting due to needing clarification on text. Member Hardy seconded and the motion passed unanimously.

C. FLHDAB Member Requirement

Board members discussed the issue of attendance and possibly lowering the membership from 7 to 5 in order for the quorum requirement to be met. There will be four vacancies on the Board beginning in February and there will not be enough for a quorum at that point which will hold up any projects that are brought to the Board for a vote.

Member Linke moved that the Board conduct more public outreach to recruit new members before changing the membership from 7 to 5 and that the Board revisit this issue in January. Member Maldonado seconded and the motion passed unanimously.

4. CHAIR REPORT

A. Historic Map and Definitions

Wayne Kohlrust, Project Manager, discussed the boundaries of the Historic District which are from North End of Nectar to 19th street behind the Brew Pub to the Ruins and the Romero Cabin, Fuller Lodge Green space and Fuller Lodge Area to Central, across Central and 2 homes on Bathtub Row that the Historic Society owns. It also includes the South Side of Ashley Pond near the Judicial Complex and all green space at the pond. The question was brought up about the Red Cross Building and Wayne said they are not sure the exact use of the building but that it could be added at a later date or before a final decision is made. The Little Theater and The Post Office would not be included at this time, but could be added at a later date. They could also be listed as a different district.

Councilor Sheehey commented that The Council is considering extending the Canyon Rim Trail across Trinity to 15th or 20th St. to the east of the lawn between Fuller Lodge and Post Office, if they took park of the lawn and made it a walking/biking path, would this become part of the Historic District and would this be a problem, per Chair Rayburn and Wayne Kohlrust; it would not be a problem but it would need to have public hearing with documentation and make a recommendation to council.

Wayne will have a surveyor mark the boundaries.

B. New Member Recruitment

Discussed in 4C

5. STAFF REPORT

A. Fuller Lodge & Historical Museum Project Update

Eric Peterson, Open Space Specialist; provided information regarding the project to stabilize the archaeological site at the County Ancestral Pueblo Site LA 708 located in Los Alamos. Eric provided an attachment that discusses the Project Background, and the Scope of Services that will need to be done. The question was brought up regarding if the New Mexico State Historic Office (SHPO) had been contacted, Eric confirmed that they have been contacted. SHPO does not have any previous documentation of work done to these sites because at the time of previous work, the area was not a registered historical site. Project should start in the spring.

Christopher Wilson, Park and Recreation Manager provided information regarding the Ashley Pond / Mesa Public Library Park Master Plan and Park Assessments. The Parks and Recreation Board will be updating the Ashley Pond / Mesa Public Library elements of the Los Alamos County Parks & Master Plan and Park Assessments 2005, (Updated in 2007.) Will be going to several boards to look for representatives to help with the process updates. Chair Rayburn expressed concern over the debates that will come up with the changes that will be made, Christopher Wilson explained that there will be several meetings with boards as well as the public to discuss any changes.

Wayne Kohlrust discussed the completion of the FL Museum Project. Museum should be done by Monday Dec 12th, concrete has been poured behind museum, rock landscaping needs to be done, finish the driveway and curb and gutter to protection. Storm windows December 8th or 9th...Snow melt tubing is in place but some new updated equipment will

be needed. The landscaping done around lodge, grass and 1 spruce tree will need to wait until spring. 4 of 6 log pillars that support the roof on the west wing are in bad shape, all will need to be replaced, and a letter has been sent to SHPO to notify them. All done by Feb 3rd, outstanding will be snow melt, grass, 1 spruce tree, and the log pillars. Half of the parking lot will be freed from the contractor within the next week. Dumpsters will be put back in original location.

Per Chair Rayburn, exhibits in the museum are all being installed in the next few weeks and private tours of the museum will begin starting on Dec 23rd at 10am, several small groups will be given tours following that over a few day and the Grand Opening will be Dec 30th at 10am. Exhibits in the museum are all being installed in the next few weeks. Chair Rayburn wanted to make sure that people understand that the museum will display the story of Los Alamos and Los Alamos History, the Atomic Bomb research and development, testing and dropping of the bomb. There will not be much about World War II, because there are other Museums that already to that.

6. INFORMATIONAL ITEMS

A. Date and Time of Next Board Meeting

The next Board meeting will be on Wednesday, January 4, 2017 at 5:30pm in the Throne Room at Fuller Lodge.

7. PUBLIC COMMENT

None

8. ADJOURNMENT

The meeting adjourned at 6:47pm.

Member Linke moved that the meeting be adjourned. Member Hardy seconded and the motion passed unanimously.

If you are an individual with a disability who is in need of a reader, amplifier, qualified sign language interpreter, or any other form of auxiliary aid or service to attend or participate in the hearing or meeting, please contact the County Human Resources Division at 505-662-8040 at least one week prior to the meeting or as soon as possible.

Public documents, including the agenda and minutes can be provided in various accessible formats. Please contact the personnel in Community and Economic Development Department at 505-662-8293 if a summary or other type of accessible format is needed.



County of Los Alamos

Staff Report

February 01, 2017

Los Alamos, NM 87544
www.losalamosnm.us

Agenda No.: E.

Index (Council Goals):

Presenters: Mark Rayburn, Chair of the Fuller Lodge Historic Districts Advisory Board

Legislative File: 9052-17

Title

Recommendation to remove shed at Stone Cottage (Red Cross Building)

Body

The wood shed outside of the Red Cross Building (Stone Cottage) has been an issue for a number of years. It was installed sometime in 1050's as a small storage shed. It has since ceased being a useful structure and is more of a nuisance. The shelving inside is rotting, it is listing to the east and has become a residence for rodents. Staff has consulted the State's Historic Preservation Division and they concur that it should be removed.

Attachments

Attachement A: Letter from State's Historic Preservation Division.

December 20, 2016

Barbara Zook, Architect
Architectural Reviewer
NM Historic Preservation Division
Bataan Memorial Building
407 Galisteo Street, Suite 236
Santa Fe, New Mexico 87501

COUNTY COUNCIL

Rick Reiss
Council Chair

Susan O'Leary
Council Vice-Chair

COUNCILORS

James A. Chrobocinski
Steven Girrens
Kristin Henderson
David Izraelevitz
Pete Sheehey

COUNTY MANAGER

Harry Burgess

SUBJECT: Consultation Regarding the Shed at the Los Alamos Power House, AKA Red Cross Building

Dear Ms. Zook:

Los Alamos County currently owns the old Power House Building. Sometime between 1942 and 1950, a wood shed was built and set next to the stone building. It in no way matches the building, with the exception of the roof that was placed on it in the early 2000's when the Power House was re-roofed.

In discussing this with the Executive Director of the Historical Society, it would seem that the shed has no real historic contributing value. It is simply set on the dirt and is progressively sinking and leaning. We would like to remove it. I have attached a couple of pages to the email transmitting this letter from a book entitled "Of Logs and Stone: The Building of Los Alamos Ranch School and Bathtub Row", by Craig Martin and Heather Mc Clenahan, showing pictures of the shed as well as a short blurb about it. The half moon door had been removed some time ago. I am also including a couple of present-day photos of its condition.

The County believes that the removal of the structure would result in No Adverse Effect to this potential historic building since it is not really tied to its original construction. The County looks forward to your review of our proposal. If you have any questions about the information provided here, please do not hesitate to contact me or our consultants for clarification.

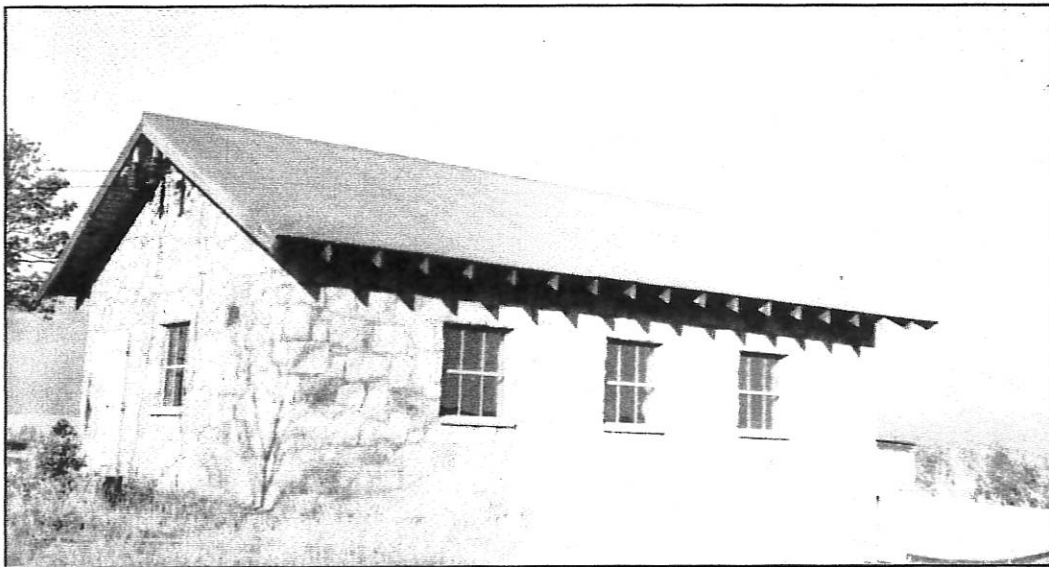
Sincerely,



Wayne Kohrurst
Los Alamos County Project Manager

cc: Pilar Cannizzaro, DCA, NM Historic Preservation Division

POWER HOUSE — 1942 Army Picture

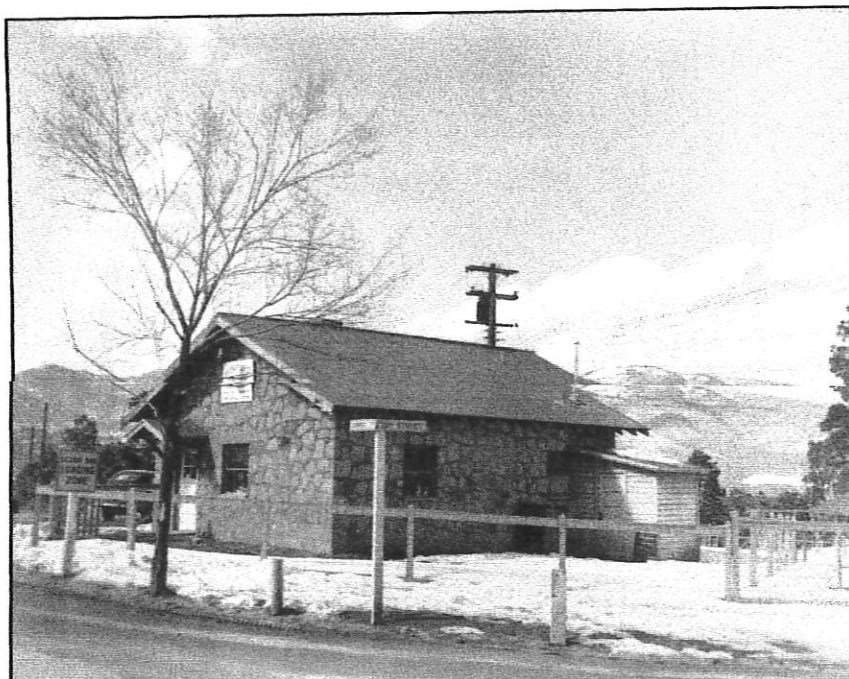


During the early years of the Los Alamos Ranch School, a gasoline generator, housed in a small wooden structure located near the Big House, provided power for running electric lights. Although it was called the Light Plant, it left much to be desired. The generator was undersized for the growing school, it experienced frequent failures, and it was noisy. Thus, when in 1933 a rapidly burning fire destroyed the power plant, Connell considered it partly a blessing in disguise.

iciency in the Power House rather than be assigned to the men's dormitory. The army, whose electricity demands far exceeded the capacity of the tiny Power House, ripped out the generators. Contractors did a hasty remodel of the interior of the stone structure and converted it into living quarters for Kistiakowsky and his wife, Irma. The crew partitioned the interior into a bedroom, kitchen, bathroom and a living room. The Army added a brick fireplace, at the time unique in the town, in the front room facing Ashley Pond.

During this tenure in the Power House, Kistiakowsky became the object of many practical jokes. The most famous involved the small storage shed the army built on the east side of the Power House. Next to the solid stone of the main building, the wooden shed looked like an outhouse. After one wild Saturday night party, unknown persons carved a half moon on the door of the shed to add credence to the outhouse effect.

The Kistiakowskys left Los Alamos after the war, and Myra Jo and Leonard Hightower moved into the Power House. However, the stone structure was really unsuited as a residence. The Atomic Energy Commission (AEC) removed the Power House from the housing list in the early 1950s. For a time the building



The Power House, circa 1950. Below, the painted T-127 identified the Power House. Courtesy Los Alamos Historical Museum Archives.

