



County of Los Alamos

1000 Central Avenue
Los Alamos, NM 87544

Agenda - Final Planning and Zoning Commission

*Michael Redondo, Chair; Ashley Mamula; Larry Warner; Melissa
Arias; Craig Martin; Jessie Dixon; and Amy Woods,
Commissioners.*

Wednesday, January 10, 2018

5:30 PM

Council Chambers
1000 Central Avenue

1. CALL TO ORDER/ROLL CALL

2. PUBLIC COMMENT

*This section of the agenda is reserved for comments from the public
on items that are not otherwise included in this agenda.*

3. APPROVAL OF AGENDA

4. PUBLIC HEARING(S)

- A. [10279-18](#)** Staff Report for the Cases presented to the Planning And Zoning
Commission Meeting on January 10, 2018.

Case No. CPA-2017-0005: A request for Comprehensive Plan Future
Land Use Map amendment for two (2) lots from Commercial/Office
designation to Mixed Use designation, located at 555 and 557
Oppenheimer Drive, also known as Lot 1 and Lot 2 on the
Trinity/Oppenheimer Subdivision Final Plat

Case No. REZ-2017-0009: A request to rezone two (2) lots from P-O
(Professional Office) District, to MU (Mixed Use) District, located at
555 and 557 Oppenheimer Drive, also known as Lot 1 and Lot 2 on
the Trinity/Oppenheimer Subdivision Final Plat

Case No. SIT-2017-0023: A request for Site Plan approval for
redevelopment activities for one (1) lot at 557 Oppenheimer Drive,
also known as Lot 1 and Lot 2 on the Trinity/Oppenheimer Subdivision
Final Plat

The cases are discussed in one report but each case will have a
separate motion.

Attachments: [A - Staff Report for Case No. REZ-2017-0009, SIT-2017-0023, and CPA-2017-0005 presented to the Planning And Zoning Commission Meeting on January 10, 2018.pdf](#)

5. PLANNING AND ZONING COMMISSION BUSINESS

- A.** [10280-18](#) Minutes from the Planning And Zoning Commission Meeting(s) on December 13, 2017.

Attachments: [Minutes 13-December 2017-P&Z.pdf](#)

6. COMMISSION/DIRECTOR COMMUNICATIONS

- A.** *Department Report*
- B.** *Chair's Report*
- C.** *Committee Reports*
- D.** *Board of Adjustment Report*
- E.** *Commissioner's Comments*

7. PUBLIC COMMENT

8. ADJOURNMENT

PLEASE NOTE: Any action by the Planning and Zoning Commission in granting approval, conditional approval or disapproval of an application may be appealed by the applicant or by persons who have a personal or pecuniary interest adversely affected by the decision as defined by Section 16-454 of the County Code. Such appeals must be filed with the Community Development Department within 15 days of the action in accordance with Section 16-492.

If you are an individual with a disability who is in need of a reader, amplifier, qualified sign language interpreter, or any other form of auxiliary aid or service to attend or participate in the hearing or meeting, please contact the County Human Resources Division at 505-662-8040 at least one week prior to the meeting or as soon as possible.

Public documents, including the agenda and minutes can be provided in various accessible formats. Please contact the personnel in the Community Development Department Office at 505-662-8006 if a summary or other type of accessible format is needed.



County of Los Alamos

Staff Report

January 10, 2018

Los Alamos, NM 87544
www.losalamosnm.us

Agenda No.: A.

Index (Council Goals):

Presenters:

Legislative File: 10279-18

Title

Staff Report for the Cases presented to the Planning And Zoning Commission Meeting on January 10, 2018.

Case No. CPA-2017-0005: A request for Comprehensive Plan Future Land Use Map amendment for two (2) lots from Commercial/Office designation to Mixed Use designation, located at 555 and 557 Oppenheimer Drive, also known as Lot 1 and Lot 2 on the Trinity/Oppenheimer Subdivision Final Plat

Case No. REZ-2017-0009: A request to rezone two (2) lots from P-O (Professional Office) District, to MU (Mixed Use) District, located at 555 and 557 Oppenheimer Drive, also known as Lot 1 and Lot 2 on the Trinity/Oppenheimer Subdivision Final Plat

Case No. SIT-2017-0023: A request for Site Plan approval for redevelopment activities for one (1) lot at 557 Oppenheimer Drive, also known as Lot 1 and Lot 2 on the Trinity/Oppenheimer Subdivision Final Plat

The cases are discussed in one report but each case will have a separate motion.

Attachments

A - Staff Report for Case No. REZ-2017-0009, SIT-2017-0023, and CPA-2017-0005 presented to the Planning And Zoning Commission Meeting on January 10, 2018



Los Alamos County

Community Development Department

PLANNING & ZONING COMMISSION STAFF REPORT

Public Hearing Date: January 10, 2017

Subject: Case No. CPA-2017-0005: A request for Comprehensive Plan Future Land Use Map amendment for two (2) lots from Commercial/Office designation to Mixed Use designation, located at 555 and 557 Oppenheimer Drive, also known as Lot 1 and Lot 2 on the Trinity/Oppenheimer Subdivision Final Plat

Case No. REZ-2017-0009: A request to rezone two (2) lots from P-O (Professional Office) District, to MU (Mixed Use) District, located at 555 and 557 Oppenheimer Drive, also known as Lot 1 and Lot 2 on the Trinity/Oppenheimer Subdivision Final Plat

Case No. SIT-2017-0023: A request for Site Plan approval for redevelopment activities for one (1) lot at 557 Oppenheimer Drive, also known as Lot 1 and Lot 2 on the Trinity/Oppenheimer Subdivision Final Plat

Applicant: Ryan Markey

Case Manager: Andrew Harnden, Housing and Special Projects Manager

Case No. CPA-2017-0005: A request for Comprehensive Plan Future Land Use Map amendment for two (2) parcels containing 1.44± acres, from Commercial/Office designation, to Mixed Use designation, for land located at 555 and 557 Oppenheimer Drive, also known as Lot 1 and Lot 2 on the Trinity/Oppenheimer Subdivision Final Plat.

Case No. REZ-2017-0009: A request to rezone two (2) parcels from P-O (Professional Office) to MU (Mixed Use), containing 1.44± acres, located at 555 and 557 Oppenheimer Drive, also known as Lot 1 and Lot 2 on the Trinity/Oppenheimer Subdivision Final Plat.

Case No. SIT-2017-0023: A request for site plan approval for redevelopment activities for one (1) parcel located at 557 Oppenheimer Drive, containing 0.71± acres, also known as Lot 2 on the Trinity/Oppenheimer Subdivision Final Plat.

Motion Option 1:

I move the Planning and Zoning Commission recommend that the Los Alamos County Council approve Case No. CPA-2017-0005 for a Comprehensive Plan Future Land Use Map amendment, for two (2) parcels, from Commercial/Office designation, to Mixed Use designation, located at 555 and 557 Oppenheimer Drive (also known as Lot 1 and Lot 2 on the Trinity/Oppenheimer Subdivision Final Plat); Case No. REZ-2017-0009 to rezone two (2) parcels from P-O (Professional Office) district, to MU (Mixed Use) district, located at 555 and 557 Oppenheimer Drive (also known as Lot 1 and Lot 2 on the Trinity/Oppenheimer

Subdivision Final Plat); and Case No. SIT-2017-0023 site plan for redevelopment activities for one (1) parcel, located at 557 Oppenheimer Drive (also known as Lot 2 on the Trinity/Oppenheimer Subdivision Final Plat).

SUMMARY

The applicant is requesting approval for Comprehensive Plan Future Land Use Map amendment for two (2) lots from Commercial/Office designation to Mixed Use designation, for property located at 555 and 557 Oppenheimer Drive; rezoning of two (2) lots from P-O (Professional Office) district, to MU (Mixed Use) district, located at 555 and 557 Oppenheimer Drive; and Site Plan approval for redevelopment activities for one (1) parcel at 557 Oppenheimer Drive. Site Plan approval is conditional to the successful action to amend the Future Land use Map of the 2016 Comprehensive Plan and the accompanying rezoning petition. The application for Site Plan Approval for 557 Oppenheimer Drive includes the addition of a third floor to the existing two-story building and addition of one small mechanical room to extend from the first floor east side. The ground floor existing office space will be remodeled and remain office space; existing second floor office space will be renovated to create eight (8) residential units; and the added third floor is proposed to contain eight (8) residential units.

The current zoning designation of 555 and 557 Oppenheimer Drive is P-O (Professional Office) District, which allows office uses, but does not allow residential offices or uses. Rezoning to the MU (Mixed Use) District designation will allow a wide range of commercial and residential uses including the applicant's proposed uses of office and residential apartments. However, because the subject properties Comprehensive Plan Future Land Use designation of Commercial/Office is not intended for residential uses. For the properties to be rezoned to Mixed Use, the Comprehensive Plan Future Land Use Map (FLUM) designation must first be amended to the Mixed Use Future Land Use Map designation.

Currently there is a building occupying each lot and each building is used for office space. 555 Oppenheimer Drive is owned by 555 Oppenheimer Condominium Association, Inc. which is comprised of various entities and individuals; and 557 Oppenheimer is owned by Los Alamos Professional Housing Partnership, which is also a partner of the owner of the structure addressed as 555 Oppenheimer Drive. The surrounding neighborhood is characterized by a mix of commercial and high density residential uses. Properties in the vicinity are completely developed. The subject lots are bordered by a 2-story townhome community to the west and the Ridge Park complex of 3-story apartment buildings to the south. Directly opposite the subject lots on the north side of Trinity Drive is an office building occupied by Mary Deal Realty, and opposite 557 Oppenheimer on the east side of Oppenheimer Drive is a Shell fuel station.

The two properties are located close to downtown, the Hospital, County government offices, Ashley Pond and the Canyon Rim Trail, which offers an attractive opportunity for businesses and housing. Amending the Comprehensive Plan Future Land Use Map to Mixed Use, and re-zoning to Mixed Use District provides the most flexibility for development, including a variety of commercial and residential uses.

Approval of a Mixed Use Comprehensive Plan and Future Land Use Map and Zoning designation for the subject properties would create a transition in intensity of uses from the properties on the north side of Trinity Drive and directly opposite the subject properties which are zoned C-2 (Civic center business and professional district), and which have a Comprehensive Plan Future Land Use Designation of Commercial/Office, and the properties directly south of the subject property, which are zoned R-3-H (Multiple-family Residential (High Density)), and which are designated for High Density Residential land uses in the Comprehensive Plan Future Land Use Map.

Each of the above three applications are a separate action and are to be voted on separately.

COMPREHENSIVE PLAN FUTURE LAND USE DESIGNATION

The two (2) lots current designation is Commercial/Office on the Comprehensive Plan Future Land Use Map which is not intended for residential uses. As a prerequisite to allow the properties to be rezoned to Mixed Use, the Comprehensive Plan Future Land Use Map designation must first be amended to Mixed Use designation.

Lots in the immediate vicinity are designated on the Comprehensive Plan Future Land Use Map as follows:

North (north-side Trinity Drive): Commercial/Office

Northeast (north-east corner of Trinity Drive & Oppenheimer Drive): Institutional

East (east-side Oppenheimer Drive): Mixed Use

South: High Density Residential 15+ DU/A

West: High Density Residential 15+ DU/A

Approval of a Mixed Use Comprehensive Plan and Future Land Use Map amendment for the subject properties would allow for a transition in intensity of uses from the commercial uses on the north side of Trinity Drive and the residential uses on the south side of the subject property.

ZONING

The current zoning of the two (2) parcels is P-O (Professional Office) which does not allow residential uses. Rezoning to MU (Mixed Use) Zoning designation will allow the applicant's proposed uses of office and residential apartments. Properties in the immediate vicinity are fully developed.

Lots in the immediate vicinity are zoned as follows:

North (north-side Trinity Drive): C-2 (Commercial)

Northeast (north-east corner of Trinity Drive & Oppenheimer Drive): DT-CPO (Downtown – Civic Public Space Overlay)

East (east-side Oppenheimer Drive): DT-NCO (Downtown – Neighborhood Commercial Overlay)

South: R-3-H (High Density Multiple Family Residential District)

West: R-3-H (High Density Multiple Family Residential District)

Approval of a Mixed Use Zoning designation for the subject properties would allow for a transition in intensity of uses from the commercial uses on the north side of Trinity Drive and the residential uses on the south side of the subject property.

SITE PLAN

The Site Plan application includes two additions to the existing two-story 14,509 Ft² office building on the 557 Oppenheimer property, to include a third floor of approximately 7,060 Ft² and a mechanical room of approximately 8'x10' to extend from the first floor east side. Upon completion, the building footprint will be 7,309 Ft² and cover 23.6% of the 0.71 acre lot. The ground floor existing office space will be remodeled and remain office space, and a utility room of approximately 8'x10' will be added to the building east side for a fire suppression mechanical system. Existing second floor office space will be renovated to create eight (8) residential units; and a third floor will be constructed for an additional eight (8) residential units. The building exterior will include stucco as one of the predominant building materials, a 3-colored wall that will avoid bright colors, massing on publicly visible sides, and windows and awnings. The building will retain much of its current characteristics and the new design will be intended to reflect or interpret the themes of existing key downtown Los Alamos buildings. The lot is mostly flat and slopes gradually to the south west corner.

The building will be brought up to code requirements including an ADA bathroom to be installed on the ground floor, interior sprinklers for fire prevention, and the building owner will be required to install a new 4" fire projection line to connect to the County water main. The added mechanical room will hold the fire suppression system. A new pedestrian entrance will be installed on the building east side and the existing ADA entrance at the southwest corner of the building will remain. The existing elevator shaft and system will be extended to serve the 3rd floor. The current utility service connections have not been verified as being adequate for the proposed additional residential occupancy, and the developer may need to install new or upgrade gas, water, sewer and electric services. Developer shall perform fire code analysis and coordinate with the Fire Department and Utility Departments to determine if a fire suppression system and additional fire hydrant is necessary. Prior to building permit application, the developer shall provide a utility plan prepared by a NM Registered Engineer for construction of utility service upgrades and fire protection improvements.

The existing vehicle entrance to the site from Oppenheimer Drive will remain. The parking area around the building will be reconfigured to provide 30 standard parking spaces and 2 handicapped spaces. The 14 standard spaces along the property south boundary are shown as 19'9" length which is 1' shorter than the County code requirement of 20'9". A waiver of one (1) foot from the County Code required standard parking space length may be approved by the Community Development Director, and therefore is not a part of Site Plan approval by the Planning & Zoning Commission. In order to meet Fire Department requirements, the existing drive lane around the building will be widened to 20' from current 18' width and the lane turning radius at the building northeast corner will be increased to 42'. The building owner will repair the break in the pedestrian railing along the Trinity Drive sidewalk and will remove the pedestrian railing along the Oppenheimer Drive sidewalk. Landscaping will be enhanced with new plantings and placement of additional landscaping materials. The existing dumpster in the northeast corner of the subject property will remain and it is currently screened. Stormwater currently flows to the south west corner of the lot and exists from the lot's south side. The developer will be required to ensure that storm water management remains adequate.

PUBLIC NOTICE

Notice of the proposed rezoning was properly and sufficiently given per the requirements of the Los Alamos County Code of Ordinances, Chapter 16 – Development Code, Article V., Sec. 16-192. As of the

date of publication of this report, no public comment in any form had been received by the Community Development Department.

COMPREHENSIVE PLAN FUTURE LAND USE MAP AMENDMENT CRITERIA FOR APPROVAL

Section 16-161 establishes the following review criteria for Comprehensive Plan amendments.

During the course of the review of any application for approval of a comprehensive plan amendment, the IDRC shall utilize the following criteria in formulating a recommendation to the planning and zoning commission. The planning and zoning commission shall make findings to reflect the following criteria in making its recommendation of approval, conditional approval or denial to the county council, and the county council shall make findings to reflect the following criteria in its approval, conditional approval or denial:

(1) The amendment shall conform to the vision statement and policy plan of the comprehensive plan and to the Strategic Leadership Plan of the county council;

Applicant Response: The amendment conforms to the vision statement, policy plan, and strategic leadership plan, specifically addressing housing diversity, downtown revitalization, and infill housing. Environmental protection is also addressed through redevelopment and repurposing of an existing building.

Staff Response: Staff concurs with and supports the above response. The proposed Future Land Use Map amendment conforms to the goals and policies outlined in the Comprehensive Plan and the goals of the Strategic Leadership Plan.

The Comprehensive Plan Amendment petition and accompanying Rezoning petition supports several goals and policies of the 2016 Comprehensive Plan that address increased density and affordable housing, including the following goals and policies:

3.1 Housing, Neighborhoods & Growth

3.1.1 HOUSING GOALS

- HG.1. Protect the character of existing residential neighborhoods
- HG2. Provide a variety of housing types, sizes and densities
- HG4. Promote maintenance and enhancement of housing stock quality.

HOUSING – ECONOMIC VITALITY POLICIES (HEV).

- HEV.1. Promote expanding the housing supply to meet the demand from employment growth and support economic diversification
- HEV.2. Promote housing for seniors, students, and the workforce to support retention of spending and tax generation in the community
- HEV.3. Promote the development of affordable and workforce housing

HOUSING - LAND USE POLICIES

- HLU.1. Encourage the creation and retention of a variety of housing options for all segments of the Los Alamos community, including but not limited to housing for

residents who are low income, students/post-docs, workforce, high-end income and seniors

- HLU.2. Promote workforce and market rate housing at a variety of price ranges, for both rental and ownership markets
- HLU.5. Develop and adopt new and mixed-use zoning districts
- HLU.6. Encourage new housing developments in proximity to workplaces
- HLU.7. Explore ways to reduce housing development costs

3.1.2 NEIGHBORHOODS – ECONOMIC VITALITY POLICIES

- NG.2. Promote the creation of a variety of housing options for all segments of the Los Alamos community

3.1.3 - GROWTH GOALS

- GG.1. Plan for modest growth of an additional 2,000 residents in the next 5 to 10 years
- GG.10. Promote growth in the downtown
- GG.11. Strive to make housing available to those who work in the County and want to live in the County

GROWTH - LAND USE POLICIES

- GLU.3. Support infill development over expansion of current developed areas

3.2 – DEVELOPMENT, REDEVELOPMENT & DOWNTOWN

3.2.1 - DEVELOPMENT GOALS

- DG.1. Keep the focus of development primarily within current development boundaries
- DG.3. Enhance and maintain a vibrant downtown while keeping a small town character and feel
- DG.5. Focus increased residential densities on new development in and near downtown

DEVELOPMENT - LAND USE POLICIES

- DLU.2. Generally keep development contained within current development boundaries (prevent sprawl)
- DLU.4. Increase residential density in the downtown area

3.2.2 - REDEVELOPMENT GOALS

- RG.1. Redevelop vacant blighted areas and underutilized properties
- RG.2. Encourage infill development on underused or blighted sites

REDEVELOPMENT – ECONOMIC VITALITY POLICIES

- REV.1. Provide flexibility for uses in redevelopment areas

3.2.3 - DOWNTOWN GOALS

- DTG.2. Focus development priorities downtown

- DTG.3. Focus increased residential densities in new development in and near downtown

DOWNTOWN - LAND USE POLICIES

- DTLU.2. Focus residential density increases in new developments in or near downtown

(2) The amendment replaces outdated information in the comprehensive plan, responds to changed conditions or provides new information which is not included in the comprehensive plan;

Applicant Response: The amendment responds to changed conditions. The properties in question are positioned on the periphery of the downtown area and accordingly should have been designated as mixed-use upon adoption of the comprehensive plan. The market's condition calls for housing diversity and housing units; this amendment will address both.

Staff Response: Staff concurs with the above response. The County supports a variety of commercial and high density residential uses in the area, and it would have been appropriate to re-designate the properties as Mixed Use upon adoption of the Comprehensive Plan.

(3) The amendment does not conflict with other parts of the comprehensive plan.

Applicant Response: The amendment does not conflict with other parts of the comprehensive plan. The amendment will not affect the character of existing neighborhoods nor does the plan call for preservation of commercial/office only uses. The amendment will serve to progress the goals of the comprehensive plan, in focusing on redevelopment and increasing housing options.

Staff Response: Staff concurs that the amendment proposed does not conflict with other parts of the Comprehensive Plan.

REZONING CRITERIA FOR APPROVAL

Section 16-155 establishes the following review criteria for rezoning of the official zoning map.

During the course of the review of any request for an amendment to the official zoning map, the IDRC shall utilize the following criteria in formulating a recommendation to the planning and zoning commission. The planning and zoning commission shall make findings to reflect the following criteria in making its recommendation of approval, conditional approval or denial to the county council, and the county council shall make findings to reflect the following criteria in its approval, conditional approval or denial:

(1) The request substantially conforms to the comprehensive plan and shall not be materially detrimental to the health, safety and general welfare of the county. A request for amendment to the comprehensive plan shall, if necessary, be submitted, processed, heard and decided upon concurrently with the request for amendment to the official zoning map;

Applicant Response: The proposed rezoning will better position the property to meet the goals of the 2016 LA County Comprehensive Plan. The rezoning specifically addresses the plan's high level goals of:

- encourage the retention of existing businesses and assist in their opportunities for growth
- focusing development priorities downtown

While no change of use is proposed in the immediate term, the rezoning improves the economic flexibility of the property in the future.

Staff Response: The Future Land Use Map (FLUM) shows both lots as Mixed Use. Staff concurs with the Applicant's response that the request conforms to the Comprehensive Plan, and is not detrimental to the health, safety and general welfare of the county.

(2) Consideration shall be given to the existing and programmed capacity of on-site and off-site public services and facilities including, but not limited to, water, sanitary sewer, electricity, gas, storm sewer, streets, sidewalks, traffic control, parks, fire and police to adequately serve the property should a rezoning result in any increase of the intensity of use of the property;

Applicant Response: No alterations to the existing building are currently proposed and hence, no changes to the utility infrastructure are projected. No additional intensity of use is projected for the property.

Staff Response: Staff concurs that due consideration has been given to off-site public services/utilities. According to the Utilities Department, the existing utility service to the lots is adequate. Any additional on-site improvements necessary to service the proposed redevelopment activities will be the responsibility of the developer.

(3) The establishment, maintenance or operation of uses applied for will not, under the circumstances of the particular case, be detrimental to the health, safety or general welfare of persons residing or working adjacent to or within the proximity of the subject property;

Applicant Response: The rezoning will allow greater economic mobility for both property owners and potential business tenants. Greater economic mobility adds to the general welfare of the community.

Staff Response: The changes proposed from the current land uses will not make the use of the subject properties incompatible with any of the neighboring properties. Nor would the rezoning make any current use non-conforming since both lots are substantially developed. Some redevelopment activities of the site is anticipated and will be reviewed in detail with the accompanying application for Site Plan approval.

(4) The existing zoning must be shown to be inappropriate for one or more of the following reasons:

a. It was established in error;

Not applicable.

b. Changed conditions warrant the rezoning;

Applicant Response: The local real estate market dictates an increase in the flexibility of spaces. Rezoning allows the property to be better positioned for the changing needs of local businesses.

Staff Response: Since 2007 and continuing to the present time, the need for additional housing has been identified by the County. The proposed MU zoning allows flexibility for a future developer to submit plans for a variety of commercial and/or residential uses.

c. A different zone is more likely to meet goals contained in the comprehensive plan.

Applicant Response: The mixed use zone is more likely to meet the goals contained within the 2016 Comprehensive Plan.

Staff Response: Staff concurs that the Mixed Use Zone will provide flexibility of future uses that will address both County Council and Comprehensive Plan goals.

(5) *The proposed zoning will not result in spot zoning or strip zoning as defined in article I of this chapter unless one or more of the following criteria are met:*

a. *Granting such zoning accomplishes the policy and intent of the comprehensive plan;*

Applicant Response: Mixed use zoning at the property accomplishes the policy and intent of the comprehensive plan, for the various reasons stated previously.

Staff Response: The rezoning to Mixed-Use designation promotes the goals of the Comprehensive Plan including: development of new housing; redevelopment of lots; focusing development within current county boundaries and in particular, adjacent to downtown; and maximizing the use of land located in close proximity to the downtown area.

b. *Unique characteristics specific to the site exist; or*

Not applicable.

c. *The zoning serves as an appropriate transition between land uses of higher and lower intensity.*

Staff Response: The rezoning application is not spot zoning. Most importantly, the rezoning accomplishes several goals of the Comprehensive Plan, especially in terms of supporting economic development, promoting the creation of additional housing, and maximizing the use of land located in close proximity to the downtown area.

(6) *If the proposed zoning map amendment is for the designation of a special plan (SP) district where a development plan or a site plan is a requirement for district approval, the map amendment shall also be judged by the special plan (SP) district review criteria stated in section 16-159.*

Not applicable.

SITE PLAN CRITERIA FOR APPROVAL

Section 16-152A establishes the following review criteria for site plan approval.

During the course of their review of any site plan, the IDRC shall utilize the following criteria in formulating a recommendation to the community development director or the planning and zoning commission; and the community development director or the planning and zoning commission shall utilize the following criteria in making its determination of approval, conditional approval or denial:

(1) *The site plan shall substantially conform to the comprehensive plan and shall not be materially detrimental to the health, safety and general welfare of the county.*

Applicant Response: The site plan substantially conforms to the mixed use goals of the 2016 Comprehensive Plan. The addition of housing options with conservation of the existing building footprint are beneficial outcomes of the redevelopment. The proposed addition of walkable, bike-able and public transit oriented housing will increase the general welfare of the county.

Staff Response: The site plan substantially conforms to the comprehensive plan and is not detrimental to the health, safety and general welfare of the county. The project and site plan specifically support the comp plan goal to focus increased residential densities on new development in and near downtown.

(2) *Ingress, egress, traffic circulation and parking on the site shall be accomplished with say for motorists, bicyclists and pedestrians. Provisions shall be made for the safe ingress, egress and circulation of vehicles, bicyclists and pedestrians.*

Applicant Response: The site as is provides an abundance of parking and ingress and egress are not located on the adjacent thoroughfare (Trinity.) We intend to include bicycle storage options and improve pedestrian access to the site in order to promote the walkability, hike-ability, and public transit usability of the community.

Staff Response: Ingress, egress and circulation for car, bicycle, and pedestrians on the site plan was considered and determined sufficient by staff. The site plan includes a drive lane of 20' width around the building and a turning radius at the property northeast corner widened to 42' to meet Fire Department requirements. The proposed 30 standard parking spaces and 2 handicapped parking spaces meets the Code requirement. Bicycle parking will also be provided.

(3) *The necessary provisions shall be made for controlling stormwater drainage on-site and off-site as required by the county engineer in accordance with the county's storm drainage construction standards or such other ordinances or storm water management plans as may exist.*

Applicant Response: The site was previously engineered and constructed with adequate stormwater control and drainage. At the time of building permit application we will address any issues that may be raised by the county engineer in accordance with the county's storm drainage construction Standards. Additionally, consideration will be given to the efficacy of storm water retention for irrigation purposes.

Staff Response: Stormwater currently flows to the south west corner of the lot and exists from the lot south side. Staff have visited the site and determined current stormwater management to be adequate. The developer is proposing minimal changes to parking and landscaping, however the developer must ensure that stormwater management remains adequate. Final grading and drainage review will occur at the time of Building Permit.

(4) *The necessary easements shall be provided for both existing and proposed utilities, on-site and off-site. No existing easement shall be terminated without provision of alternate service, and all new services shall be provided.*

Applicant Response: Necessary easements for existing utilities are already in place. No existing easements will be terminated.

Staff Response: Existing easements for ingress, egress, surface drainage, storm sewer and utilities are shown on the Applicant's submitted plans. Any additional needed easements for the development will be the responsibility of the applicant to establish.

(5) *The site plan shall include a conceptual landscape plan that will enhance the site and immediate vicinity and provide adequate screening and buffering, if appropriate, between properties. The final landscape plan shall conform to the requirements set forth in sections 16-574 and 16-575.*

Applicant Response: The site's existing mature landscaping will be preserved and enhanced with additional native plants. The existing landscaping provides adequate screening and buffering between adjacent properties. Additional planting will take place in the areas indicated on the attached site plan drawing.

Staff Response: The Mixed Use zoning designation has no landscaping requirements. The Applicant's proposed site plan will improve the existing landscaping. Final landscaping details, including a plant list, will be provided with the Building Permit.

(6) *Parking lots, outside storage areas, outside mechanical equipment and outdoor lighting shall be designed to serve the intended use of the development while minimizing adverse impacts on adjacent properties or public rights-of-way.*

Applicant Response: The existing external features of the site as listed above were designed to serve the original use of the property. The parking lot will be resurfaced and restriped to comply with the requirements of mixed use zoning. Any other changes to these features will be designed to minimize the adverse impacts on adjacent properties.

Staff Response: As proposed, there should be no adverse impacts on adjacent properties as related to parking, mechanical equipment, or lighting. No outdoor storage is proposed.

(7) *The capacity of those public services and facilities required to serve the proposed development (including but not limited to water, sanitary sewer, electricity, gas, storm sewer, streets, etc.) shall conform with, or if improvements are required, shall be made to conform with the requirements of the county's construction standards.*

Applicant Response: Existing public services will continue to be used, while any additional capacity needs will be addressed with conforming improvements prior to building permit application.

Staff Response: As proposed, existing public services will continue to be used, and any additional service capacity needs will be addressed prior to application for building permit.

(8) *Structures, site grading, and all other aspects of the development shall meet all applicable design standards or guidelines, as may be adopted and made a part of this code, and shall preserve, to the extent practical, outstanding topographical features and natural amenities on the site.*

Applicant Response: The existing grading and structural footprint will remain substantially unchanged. Prior to building permit application, any changes will be addressed to meet applicable standards and codes.

Staff Response: The proposed changes to grading and other development aspects are considered minimal by the County Subdivision Engineer. The applicant will be required to address all development aspects at the time of building permit.

(9) *Provisions shall be made to serve the development with tot lots and/or neighborhood parks in accordance with the adopted comprehensive plan. A fee may be paid as approved by county council to accomplish the purpose of a comprehensive plan in lieu of the development of tot lots or neighborhood parks.*

Applicant Response: The development is one block from Ashley Pond. The will be designed to increase walkability and bike-ability and is already situated adjacent to a public transit stop. These features will promote the use of nearby public recreation areas.

Staff Response: Neither the current property nor the proposed development has sufficient space for a tot lot or park. Ashley Pond and other area parks will be easily accessible from the site by walking, bicycle and public transit.

STAFF AND INTERDEPARTMENTAL REVIEW COMMITTEE (IDRC) RECOMMENDATION

Staff determined that the application for Comprehensive Plan Future Land Use Map Amendment, Rezoning, and Site Plan meet the criteria for these three types of applications. IDRC review of the REZ and SIT applications took place at a regularly scheduled IDRC meeting on November 17, 2017. IDRC review of the Future Land Use Map Amendment (CPA) was conducted after the Nov 17, 2017 meeting. After determining that the applications do not present any negative aspects or impacts that would preclude it from being forwarded to the Planning & Zoning Commission for a public hearing, the IDRC membership conducted a vote and forwarded a favorable recommendation to the Planning & Zoning Commission.

FINDINGS OF FACT

1. The public hearing was announced by publication in the in The Los Alamos Daily Post, the Newspaper of Record for Los Alamos County, on Thursday November 23, 2017, and property owner notices were mailed via first class mail to all owners of real property located within 100 yards of the subject property, per the requirements contained in Article V, §16-192 of the Los Alamos County Development Code.
2. The petitioner owns the subject properties.
3. The subject properties are located at 555 and 557 Oppenheimer Drive, Los Alamos, New Mexico. The properties contain 0.73± acres (555 Oppenheimer Drive), and 0.71± acres (557 Oppenheimer Drive).
4. The properties are designated Commercial/Office in the Comprehensive Plan Future Land Use Map, which is described in Article IV, §16-161 of the Los Alamos County Development Code ("Development Code"), and which is currently zoned P-O, Professional Office (which is described in Article XIII, §16-533 of the Development Code).
5. The Future Land Use Map Designation of the 2016 Los Alamos Comprehensive Plan for the properties shall be amended to Mixed Use, also as described in Article IV §16-161 of the Development Code; the properties will be rezoned to Mixed Use (MU), also as described in Article XIII, §16-533 of the Development Code; and the Site Plan for 557 Oppenheimer meets the requirements of §16-152A of the Development Code.
6. The future land use designation, rezoning and site plan approval requested support several goals and policies of the 2016 Comprehensive Plan, and are in conformance with the land uses illustrated on the Future Land Use Map.

7. This petition was discussed at the Interdepartmental Review Committee meeting, on Friday November 17, 2017. At this meeting, the IDRC voted unanimously on a motion to recommend approval to the Planning & Zoning Commission.
8. The Community Development Department has not received any correspondence, either in support of or opposed to, this request, as of Thursday, December 7, 2017.
9. The petitioner has provided sufficient evidence to satisfy the requirements contained within §16-160, §16-161, §16-155, and §16-152A of the Los Alamos County Development Code to warrant approval of the actions requested.

EXHIBITS

- | | |
|-----------|--|
| Exhibit 1 | Applications and Site Plan |
| Exhibit 2 | Vicinity Maps for Future Land Use Designation and Rezoning |
| Exhibit 3 | List of property owners of record within 100 yards of subject property, and map. |
| Exhibit 4 | Interdepartmental Review Committee (IDRC) Report |
| Exhibit 5 | Photographs of Subject Property, Staff (11) |

COMPREHENSIVE PLAN AMENDMENT APPLICATION

Los Alamos County Community Development Department
1000 Central Ave, Suite 150, Los Alamos NM 87544
(505) 662-8120

This Comprehensive Plan Amendment Application is for:

☐ Text Amendment ☒ Future Land Use Map Amendment ☐ Both

APPLICANT: *[Applications for amendment to the comprehensive plan may be made by the county council, the planning and zoning commission, the county manager or the community development director.]*

Name: Ryan Markey Title: Agent Organization: Los Alamos Professional Investment Partnership
Please Print

SIGNATURE

DATE

If this Application is for or includes a Future Land Use Map Amendment, indicate:

Commercial /Office

Mixed-Use

FROM (Current Land Use per FLUM)

TO (Proposed Land Use on FLUM)

Cite the sections of the comprehensive plan to be amended and explain why the amendment is necessary:

We are requesting that "Exhibit 40 - County Future Land Use Map" and "Exhibit 41 - Townsite Future Land Use Map" of the 2016 be amended as follows; change the use of 555 Oppenheimer Dr. to Mixed-Use. Change the use of 557 Oppenheimer Dr. to Mixed-Use.

Describe Related Applications, if any: 555 and 557 Oppenheimer Rezoning and 557 Site Plan

REQUIRED SUBMITTALS for FUTURE LAND USE MAP AMENDMENTS only:

☒ Provide a copy of the Plat or a Legal Description of the affected property

☐ Other

FOR COMMUNITY DEVELOPMENT DEPARTMENT USE:

CDD Application Number: _____

COMPREHENSIVE PLAN AMENDMENT REVIEW CRITERIA:

The Los Alamos County Code of Ordinances, Chapter 16, Development Code, Sec. 16-161 establishes three (3) criteria to be considered when reviewing an application for Comprehensive Plan Amendment approval. Please review each of the criteria listed and provide short comments on how the application meets the criteria. (Attach additional sheets if needed.)

(1) The amendment shall conform to the vision statement and policy plan of the comprehensive plan and to the Strategic Leadership Plan of the county council;

The amendment conforms to the vision statement, policy plan, and strategic leadership plan, specifically addressing housing diversity, downtown revitalization, and infill housing. Environmental protection is also addressed through redevelopment and repurposing of an existing building.

(2) The amendment replaces outdated information in the comprehensive plan, responds to changed conditions or provides new information which is not included in the comprehensive plan;

The amendment responds to changed conditions. The properties in question are positioned on the periphery of the downtown area and accordingly should have been designated as mixed-use upon adoption of the comprehensive plan. The market's condition calls for housing diversity and housing units; this amendment will address both.

(3) The amendment does not conflict with other parts of the comprehensive plan.

The amendment does not conflict with other parts of the comprehensive plan. The amendment will not affect the character of existing neighborhoods nor does the plan call for preservation of commercial/office only uses. The amendment will serve to progress the goals of the comprehensive plan, in focusing on redevelopment and increasing housing options.

REZONING APPLICATION

Los Alamos County Community Development Department
1000 Central Ave, Suite 150, Los Alamos NM 87544
(505) 662-8120

Property to be Rezoned: 555 Oppenheimer Drive
Los Alamos, NM 87544
Address

From: P-O Professional Office District To: MU - Mixed Use 0.73
Current Zoning District **Proposed Zoning District** **Area (Acres)**

Professional Office Mixed Use
Current Use **Proposed Use/Reason for Rezoning**

Related Applications:

557 Oppenheimer Rezoning Application, 557 Oppenheimer Site Plan Application

APPLICANT (Unless otherwise specified, all communication regarding this application shall be to Applicant):

Name: Ryan Markey Phone: 505-216-1618 Cell #: 505-331-7467

Please Print

Address: PO Box 42, Santa Fe, NM 87504 Email: ryansmarkey@gmail.com



11/13/2017

SIGNATURE

DATE

PROPERTY OWNER (If different from Applicant)

☐ Check here if same as above

Name: 555 Oppenheimer Condominium Association, Inc. Phone: _____ Cell #: _____

Please Print

Address: _____ Email: _____

My signature below indicates that I authorize the Applicant to make this rezoning application on my behalf.

SIGNATURE

DATE

REZONING CRITERIA:

The Los Alamos County Code of Ordinances, Chapter 16, Development Code, Sec. 16-155 establishes six (6) criteria for the Planning and Zoning Commission to use when reviewing an application for rezoning approval. Please review each of the criteria listed and provide short comments on how your application meets the criteria in the space provided. You will also be asked to discuss the criteria at your public hearings.

- (1) *The request substantially conforms to the comprehensive plan and shall not be materially detrimental to the health, safety and general welfare of the county. A request for amendment to the comprehensive plan shall, if necessary, be submitted, processed, heard and decided upon concurrently with the request for amendment to the official zoning map.*

The proposed rezoning will better position the property to meet the goals of the 2016 LA County Comprehensive Plan. The rezoning specifically addresses the plan's high level goals of:

- encourage the retention of existing businesses and assist in their opportunities for growth
- focusing development priorities downtown

While no change of use is proposed in the immediate term, the rezoning improves the economic flexibility of the property in the future.

- (2) *Consideration shall be given to the existing and programmed capacity of on-site and off-site public services and facilities including, but not limited to, water, sanitary sewer, electricity, gas, storm sewer, streets, sidewalks, traffic control, parks, fire and police to adequately serve the property should a rezoning result in any increase of the intensity of use of the property.*

No alterations to the existing building are currently proposed and hence, no changes to the utility infrastructure are projected. No additional intensity of use is projected for the property.

- (3) *The establishment, maintenance or operation of uses applied for will not, under the circumstances of the particular case, be detrimental to the health, safety or general welfare of persons residing or working adjacent to or within the proximity of the subject property.*

The rezoning will allow greater economic mobility for both property owners and potential business tenants. Greater economic mobility adds to the general welfare of the community.

- (4) *The existing zoning must be shown to be inappropriate for one or more of the following reasons:*

- a. *It was established in error;*

Not applicable

- b. *Changed conditions warrant the rezoning; or*

The local real estate market dictates an increase in the flexibility of spaces. Rezoning allows the property to be better positioned for the changing needs of local businesses.

- c. *A different zone is more likely to meet goals contained in the comprehensive plan.*

The mixed use zone is more likely to meet the goals contained within the 2016 comprehensive plan.

(5) *The proposed zoning will not result in spot zoning or strip zoning as defined in article I of this chapter unless one or more of the following criteria are met:*

a. *Granting such zoning accomplishes the policy and intent of the comprehensive plan;*
Mixed use zoning at the property accomplishes the policy and intent of the comprehensive plan, for the various reasons stated previously.

b. *Unique characteristics specific to the site exist; or*
Not applicable

c. *The zoning serves as an appropriate transition between land uses of higher and lower intensity.*
Not applicable

(6) *If the proposed zoning map amendment is for the designation of a special plan (SP) district where a development plan or a site plan is a requirement for district approval, the map amendment shall also be judged by the special plan (SP) district review criteria stated in section 16-159.*

Not applicable

REQUIRED SUBMITTALS:

Check each of the boxes to indicate that you have attached two (2) paper copies of each of the following, and one complete copy of all materials on disk:

☒ **Proof of property ownership.**

☒ **A Vicinity map, 8 ½ by 11 inch or 8 ½ by 14 inch format, showing the boundaries of the property to be rezoned and all adjacent lots within 300 feet.**

☒ **A scaled Plat or survey including all the following information:** (Note: For smaller properties, a legal description with metes and bounds, may be acceptable. Check with CDD staff.)

☒ **Locate and label all existing utility lines on the site.** (Existing gas and electric service lines must be located by the Los Alamos County Utilities Department prior to submittal of this application.)

☒ **Show and label the footprint of all existing buildings and structure on the site.**

☒ **Show the footprint of all buildings and public rights-of-way within 20 feet of all boundary of the site.**

☒ **Show, dimension and label all existing and proposed easements.**

THIS SECTION TO BE COMPLETED BY THE COMMUNITY DEVELOPMENT DEPARTMENT

For County Use:

Date of Submittal: _____

Staff Initial: _____

CDD Application Number: _____

Fees Paid: _____

SITE PLAN APPLICATION

Los Alamos County Community Development Department
1000 Central Ave, Suite 150, Los Alamos NM 87544
(505) 662-8120

Address and Use of Property to which the application applies:

557 Oppenheimer Drive, Los Alamos, NM 87544

Current Use: ☐ Vacant **Other:** Professional Office / Proposed Use: Mixed Use

Zoning District: P-O **Acreage:** 0.70 **Lot Coverage:** 23% **Related Applications (if any):**

557 Oppenheimer Rezoning Application, 555 Oppenheimer Rezoning Application

APPLICANT (Unless otherwise specified, all communication regarding this application shall be to Applicant):

Name: Ryan Markey **Phone:** 505-216-1618 **Cell #:** 505-331-7467
Please Print

Company Name:

Address: PO Box 42, Santa Fe, NM 87504 **Email:** ryansmarkey@gmail.com


SIGNATURE **DATE** 11/13/2017

PROPERTY OWNER ☐ Check here if same as above

Los Alamos Professional Office Partnership
Name: Managing Member: Rick Brenner **Phone:** 505-216-1618 **Cell #:** 505-231-2008
Please Print

Address: PO Box 9146, Santa Fe, NM 87504 **Email:** richardhbrenner@gmail.com
Owner's Address

My signature below indicates that I authorize the Applicant to make this Amendment application on my behalf.


SIGNATURE **DATE** 11/13/17

Pre-Application Meeting Date(s): October 20, 2017 **IDRC Date:**

THIS SECTION TO BE COMPLETED BY THE COMMUNITY DEVELOPMENT DEPARTMENT

Date of Submittal: **Staff Initial:**

CDD Application Number: **Fees Paid:**

SITE PLAN REVIEW CRITERIA

The Los Alamos County Code of Ordinances, Chapter 16, Development Code, Sec. 16-152A establishes the following criteria for recommendation by IDRC, or for determination by the CDD Director or P&Z, of approval, conditional approval or denial of the application. Please review each of the criteria listed and provide short comments on how your application meets the criteria in the space provided. (Attach additional sheets if needed.)

- (a) *The site plan shall substantially conform to the comprehensive plan and shall not be materially detrimental to the health, safety and general welfare of the county.*

The site plan substantially conforms to the mixed use goals of the 2016 comprehensive plan. The addition of housing options with conservation of the existing building footprint are beneficial outcomes of the redevelopment. The proposed addition of walkable, bike-able and public transit oriented housing will increase the general welfare of the county.

- (b) *Ingress, egress, traffic circulation and parking on the site shall be accomplished with safety for motorists, bicyclists and pedestrians. Provisions shall be made for the safe ingress, egress and circulation of vehicles, bicyclists and pedestrians.*

The site as is provides an abundance of parking and ingress and egress are not located on the adjacent thoroughfare (Trinity.) We intend to include bicycle storage options and improve pedestrian access to the site in order to promote the walkability, bike-ability, and public transit usability of the community.

- (c) *The necessary provisions shall be made for controlling stormwater drainage on-site and off-site as required by the county engineer in accordance with the county's storm drainage construction standards or such other ordinances or storm water management plans as may exist.*

The site was previously engineered and constructed with adequate stormwater control and drainage. At the time of building permit application we will address any issues that may be raised by the county engineer in accordance with the county's storm drainage construction standards. Additionally, consideration will be given to the efficacy of storm water retention for irrigation purposes.

- (d) *The necessary easements shall be provided for both existing and proposed utilities, on-site and off-site. No existing easement shall be terminated without provision of alternate service, and all new services shall be provided.*

Necessary easements for existing utilities are already in place. No existing easements will be terminated.

- (e) *The site plan shall include a conceptual landscape plan that will enhance the site and immediate vicinity and provide adequate screening and buffering, if appropriate, between properties. The final landscape plan shall conform to the requirements set forth in sections [16-574](#) and [16-575](#).*

The site's existing mature landscaping will be preserved and enhanced with additional native plants. The existing landscaping provides adequate screening and buffering between adjacent properties. Additional planting will take place in the areas indicated on the attached site plan drawing.

- (f) *Parking lots, outside storage areas, outside mechanical equipment and outdoor lighting shall be designed to serve the intended use of the development while minimizing adverse impacts on adjacent properties or public rights-of-way.*

The existing external features of the site as listed above were designed to serve the original use of the property. The parking lot will be resurfaced and restriped to comply with the requirements of mixed use zoning. Any other changes to these features will be designed to minimize the adverse impacts on adjacent properties.

- (g) *The capacity of those public services and facilities required to serve the proposed development (including but not limited to water, sanitary sewer, electricity, gas, storm sewer, streets, etc.) shall conform with, or if improvements are required, shall be made to conform with the requirements of the county's construction standards.*

Existing public services will continue to be used, while any additional capacity needs will be addressed with conforming improvements prior to building permit application.

- (h) *Structures, site grading, and all other aspects of the development shall meet all applicable design standards or guidelines, as may be adopted and made a part of this code, and shall preserve, to the extent practical, outstanding topographical features and natural amenities on the site.*

The existing grading and structural footprint will remain substantially unchanged. Prior to building permit application, any changes will be addressed to meet applicable standards and codes.

- (i) *Provisions shall be made to serve the development with tot lots and/or neighborhood parks in accordance with the adopted comprehensive plan. A fee may be paid as approved by county council to accomplish the purpose of a comprehensive plan in lieu of the development of tot lots or neighborhood parks.*

The development is one block from Ashley Pond. The site will be designed to increase walkability and bike-ability and is already situated adjacent to a public transit stop. These features will promote the use of nearby public recreation areas.

SUBMITTALS:

Provide all information necessary for a complete review of the Site Plan request. Check each of the boxes to indicate which information you have provided. Provide two hard copies of all plans and also provide one complete copy of all materials on disk:

- ☒ Agent Authorization, if applicable.
- ☒ Proof of property ownership (Warranty deed, recorded Plat, etc.).
- ☒ Scaleable copies of Site Plan drawings including:
 - ☒ Footprint and square footage of all buildings and structures on the site.
 - ☒ Building/structure elevations.
 - ☒ Existing and proposed lot coverage.
 - ☒ All existing and proposed easements.
 - ☒ All existing and proposed setbacks.
 - ☒ Existing and proposed trails.
- ☐ Preliminary Landscape Plan.
- ☐ Preliminary Grading and Drainage Plan.
- ☒ Preliminary Utilities Plan.

Note: Final construction plan set will be required at Building Permit.

Additionally, per Sec. 16-571, at or before the first IDRC meeting, the County Engineer may require the following Impact Studies:

- ☐ Traffic impact analysis (TIA).
- ☐ Stormwater drainage report.
- ☐ Utility capacity analysis.
- ☐ Soils report.
- ☐ Other. Describe: _____

You are advised to meet with the County Engineer early in the planning process to determine which studies will be required.

Please provide any other information that you believe is relevant to or supports this application.

No preliminary grading and drainage plan has been submitted with this application due to the existing nature of the property improvements. In lieu of a preliminary landscape plan, the attached site plan exhibits the additional planting that is to take place.

STATE OF NEW MEXICO)
) SS.
COUNTY OF LOS ALAMOS)

Signed: [Signature]

Address: PO Box 9146, Santa Fe, NM 87504

Phone: 505 216 1618

Subscribed and sworn to before me this 13 day of November, 20 17.

Jaime Gallardo
Notary Public

My Commission Expires: 10.1.2020



Brenner Development Co.
P.O. Box 42
Santa Fe, NM 87504

Date: October 13th, 2017

To: Andrew Harnden, Housing & Special Projects Manager, Los Alamos County

Re:557 Oppenheimer Rehabilitation – Mixed Use Zone Change Application and Site Plan Application

To prepare the stakeholders for our pre-application meeting, here is a brief overview of the project:

- The property currently exists as a 14,000 SF two-story office building on 0.7 acres. The current zone is P-O (Professional Office).
- The property will be rezoned MU (Mixed Use), to accommodate the addition of residential units.
- A third story will be constructed. The first story will remain office space. The second and third stories will be residential with 8 units on each floor (16 total).
- The building will be brought up to code requirements where applicable, including an ADA compliant unisex bathroom and fire protection system.
- Additional site-work will be completed to bring the parking up to current code requirements and to expand and beautify the landscape.

We hope to achieve the following outcomes from the pre-application meeting:

- Better understand what building codes apply to the renovations versus existing space.
- Have a rough timeline for submittal of an application and successive meetings and approvals.
- Understand the effects on public infrastructure caused by the project and the potential costs associated with use of said infrastructure.

Thank you for your assistance,

Ryan Markey

557 Oppenheimer Parking Required per 16-579-11

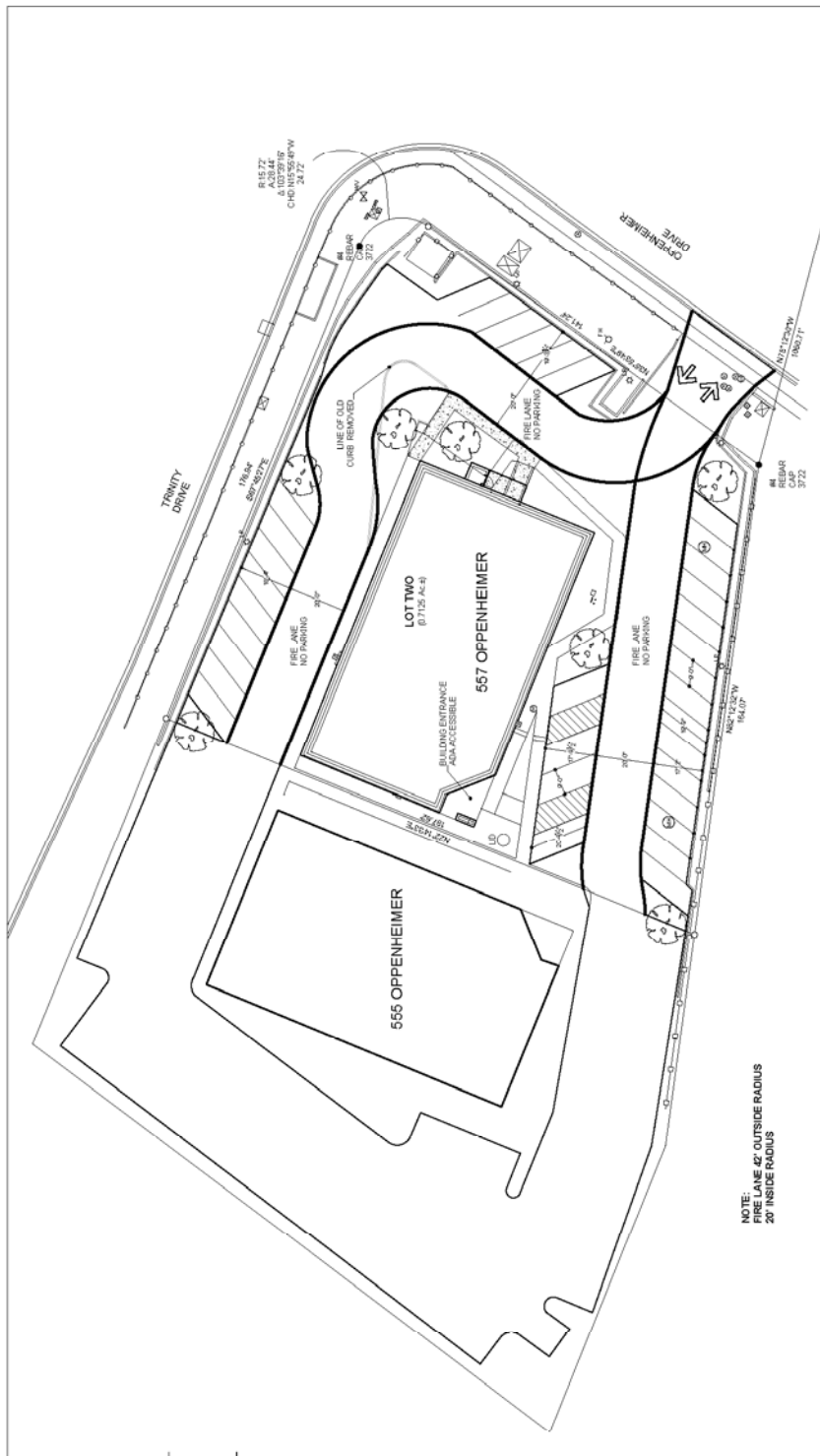
	Factor	Total
Second Level Residential	5,439	
Third Level Residential	5,278	
	10,717 nsf	753 14 spaces
Office Use Lease Area A	3,587	
Office Use Lease Area B	1,962	
	5,549 nsf	353 16 spaces
Total	16,266 nsf	30 spaces
Handicapped spaces included in total		2 hp spaces

557 Oppenheimer Parking Provided

557	32 spaces
Total	32 spaces
Handicapped spaces included in total	2 hp spaces
Note handicapped spaces for 555 are included in work-area	
All parking spaces are 9' by 17'	

Lot and Building Areas

Lot One - 555 Oppenheimer	0.7304 acres	31,813 sf
Building footprint		7,265 sf
Lot Coverage		22.8%
Building Area		
Lot Two - 557 Oppenheimer	0.7125 acres	31,035 sf
Building footprint		7,303 sf
Lot Coverage		23.6%
Existing Building Area		14,503 sf
Proposed Building Area		21,572 sf



NOTE:
FIRE LANE 47' OUTSIDE RADIUS
29' INSIDE RADIUS

JUNE, 1988

DECLARATION OF SUBDIVISION

Know All Men By These Presents that the Los Alamos Office Partnership has made a Sub-division as shown hereon of Tract "A", Replot of Timber Ridge Subdivision, Unit 2, Los Alamos County, New Mexico, the Replot of said Timber Ridge Subdivision, Unit 2 being filed for record in the office of the County Clerk of Los Alamos County, New Mexico in Page Book 3, Page 98, on the 31st day of June, 1980 as Document No. 51330; that the Subdivision is made with the free consent and in accordance with the desires of the undersigned owners and proprietors.

EXEMPTIONS: Exemptions shown hereon are those granted and dedicated on the Plat of Timber Ridge Subdivision, Unit 2 filed for record in the office of the Los Angeles County Clerk, Los Alamitos, New Mexico, in Plat Book 33, Page 64 on the 30th day of June, 1978; Exemption therefrom a 42 foot Steam Easement created by document filed for record in the office of the Los Angeles County Clerk, Los Alamitos, New Mexico in Mac. book 33, page 109. Said easements remain unchanged by this plat excepting those statements reported as new and granted and dedicated below.

NEW 10' UTILITY EASEMENTS: Utility Easements shown hereon designated "NEW 10' UTILITY EASEMENT" are hereby granted to the County of Los Angeles, its successors, and assigns. The easements include but are not limited to the right to install, operate, maintain, repair, replace, relocate, and remove public utility facilities, and the right of ingress and egress and the right to remove any structures, vegetation, rocks or obstruction as may reasonably appear necessary.

INGRESS AND EGRESS EASEMENTS: Lot 1 and Lot 2, hereby grant, each to the other, their successors and assigns, the right of ingress and egress (vehicular and pedestrian) within the New Ingress and Egress Easement as delineated on this plat; the sole purpose of this easement is for access and no parking rights are granted or implied.

LOS ALAMOS PROFESSIONAL INVESTMENT PARTNERSHIP
Stephen B. Brenner
 STEPHEN BRENNER - GENERAL PARTNER

Donald Steele
 DONALD STEELE - GENERAL PARTNER

STATE OF NEW MEXICO

The foregoing instrument was acknowledged before me this 10th day of June, 2008, by Richard Brenner, Donal Stiehl, and Lynna Stiehl, General Partners on behalf of Los Alamos Professional Investment Partnership, a general partnership.

Dame of the Strain, My commission expires 7-30-87
NOTARY PUBLIC

APPROVAL

This plot is hereby approved this 27 day of July, 1988, in accordance with a resolution of the Planning Commission, County of Los Angeles, New Mexico.

Patty Shand
CHAIRMAN

STATE OF NEW MEXICO) ss
COUNTY OF LOS ALAMOS)

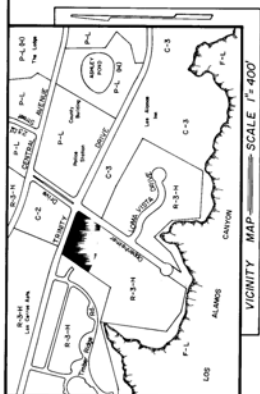
I hereby certify that this instrument was filed for record as Document No. 53309 on the 22nd day of October 1988 at 2:27 o'clock, PM, and duly recorded in Plat Book 5, Page 86 of the records of said County.

COUNTY CLERK *at the Court*
By: Marguerite Carroll

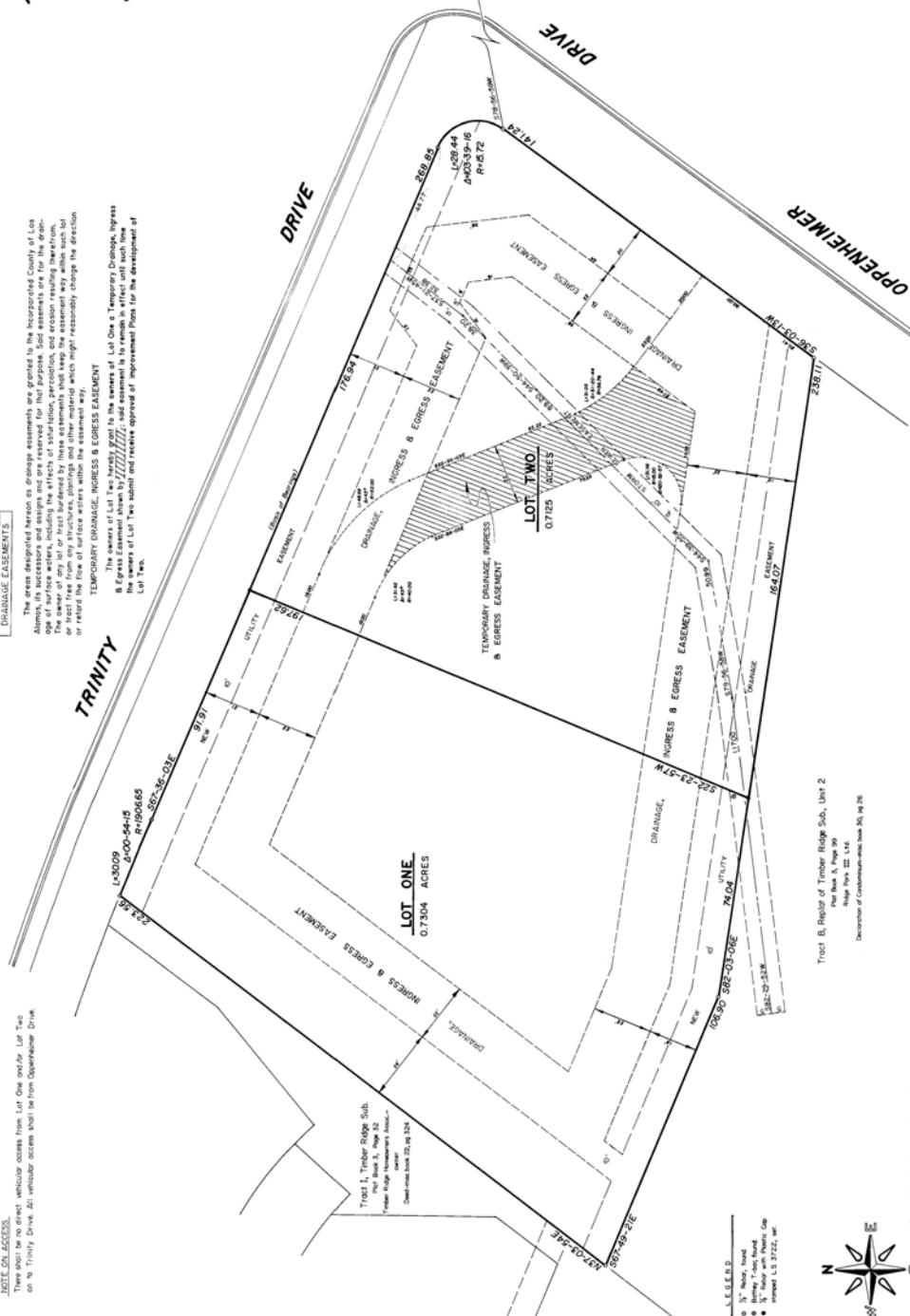
CERTIFICATION

I, John R. Mendez, hereby certify that I am a registered Professional Surveyor under the laws of the State of New Mexico and that the plat and notes herein were prepared from the official Register of Land Office Subdivision No. 2 filed for record with the County Clerk of Los Alamos County, State of New Mexico and from field notes of an actual survey made under my supervision on the 6th day of June, 1908 and meet the minimum requirements of the Standards of Land Surveys in New Mexico as adopted by the New Mexico State Board of Registration for Professional Engineers and Professional Surveyors. I am true and correct to the best of my knowledge and belief.

Edw. P. Henderson
N. M. Reg. No. 3722



NOTE ON ACCESS:
There shall be no direct vehicular access from Lot One and/or Lot Two to Trinity Drive. All vehicular access shall be from Oronoke Avenue. Private



Tract B, Replat of Timber Ridge Sub., Unit 2
 Plat Book 5, Page 99
 Ridge Park III L.L.C.
 Declaration of Condominium-which books 50, 94 26

LEGEND

- $\frac{1}{8}$ " Rebar, found
- Battery T-bar, found
- $\frac{1}{8}$ " Rebar with Plastic Cap



SCALE 1" = 20'

557 Oppenheimer Parking Required per 16-579-41

	Factor	Total
Second Level Residential	5,439	
Third Level Residential	5,278	
	10,717 nsf	750 14 spaces
Office Use Lease Area A	3,587	
Office Use Lease Area B	1,952	
	5,549 nsf	350 16 spaces
Total	16,266 nsf	30 spaces
Hand capped spaces included in total		2 hp spaces

557 Oppenheimer Parking Provided

557	32 spaces
Total	32 spaces
Hand capped spaces included in total	
d spaces for 555 are included in workarea	
2 hp spaces	

Lot and Building Areas

Lot One - 555 Oppenheimer	0.7304 acres	31,818 s'
Building footprint	7,265 s'	
Lot Coverage	22.8%	
Building Area		
Lot Two - 557 Oppenheimer	0.7125 acres	31,036 s'
Building footprint	7,309 s'	
Lot Coverage	23.6%	
Existing Building Area	14,509 s'	
Proposed Building Area	21,572 s'	

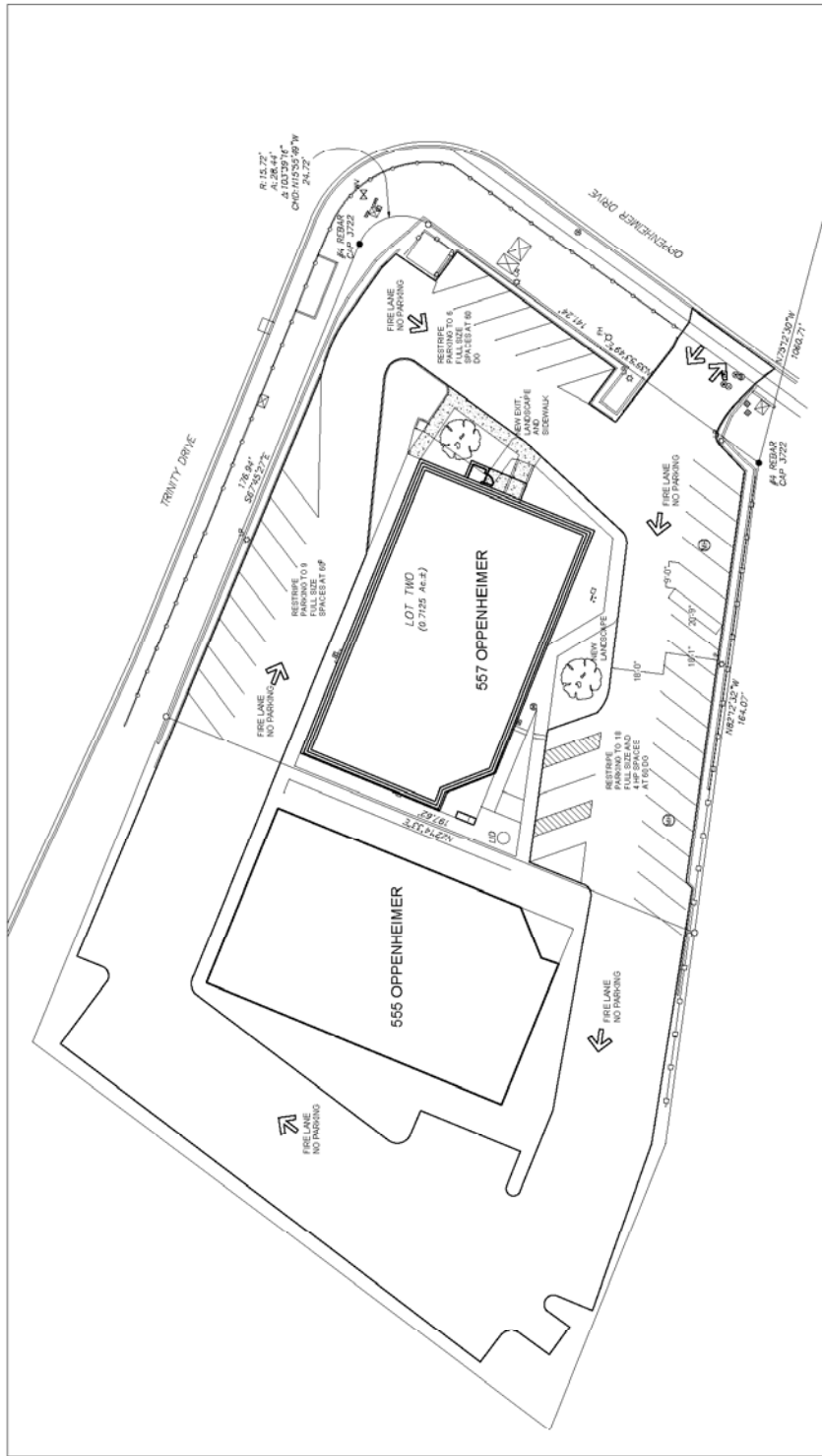


Exhibit 1 Applications and Site Plan

BAER ARCHITECTURE
ARCHITECTURE
NM LLC

ALLIANT BASED AIA
227 EAST PALACE AVENUE, SUITE C
SANTA FE, NEW MEXICO 87501
505-470-8836
allanbaer@comcast.net
© 2017 All Rights Reserved

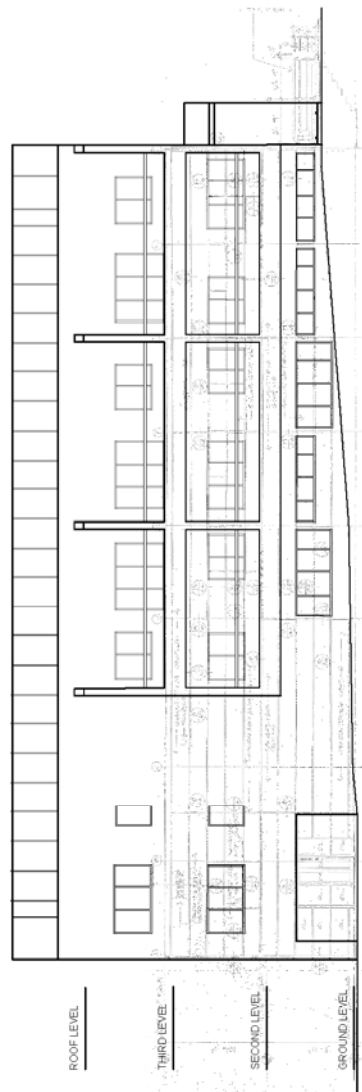
PROJECT
557 OPPENHEIMER DRIVE
LOS ALAMOS, NEW MEXICO
LOS ALAMOS PROFESSIONAL INVESTMENT PARTNERSHIP
PO BOX 9146
SANTA FE, NEW MEXICO 87504

SHEET TITLE
SITE PLAN

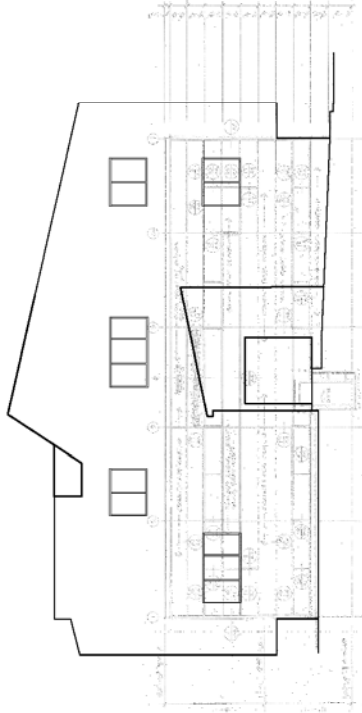
SCALE
1" = 20.0'

DATE AND ISSUE
NOVEMBER 9, 2017

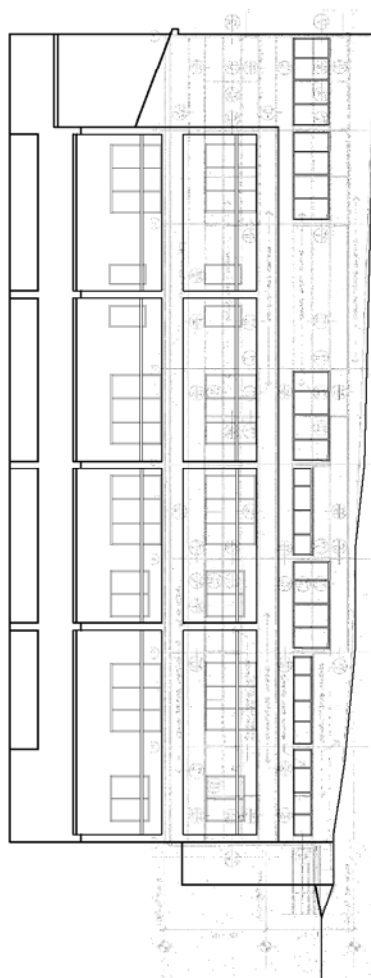
SHEET NUMBER
SPS-1



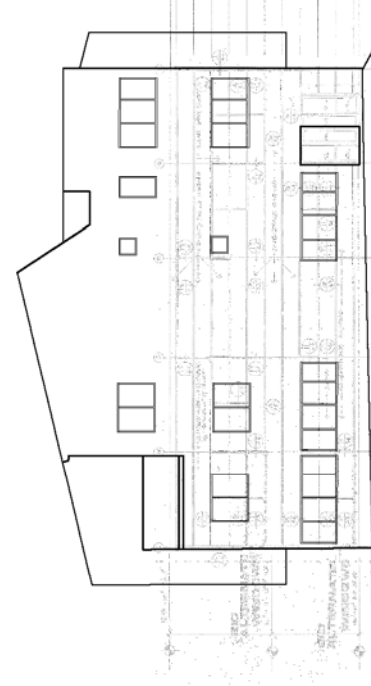
SOUTH



EAST



NORTH



WEST

BAER ARCHITECTURE
NM LLC
227 EAST PALACE AVENUE, SUITE C
SANTA FE, NEW MEXICO 87501
305-470-8886
allan@baerarchitect.com
© 2017 Baer Architecture, LLC

PROJECT
557 OPPENHEIMER DRIVE
LOS ALAMOS, NEW MEXICO
LOS ALAMOS PROFESSIONAL INVESTMENT PARTNERSHIP
PO BOX 9146
SANTA FE, NEW MEXICO 87504

SHEET TITLE
ELEVATIONS

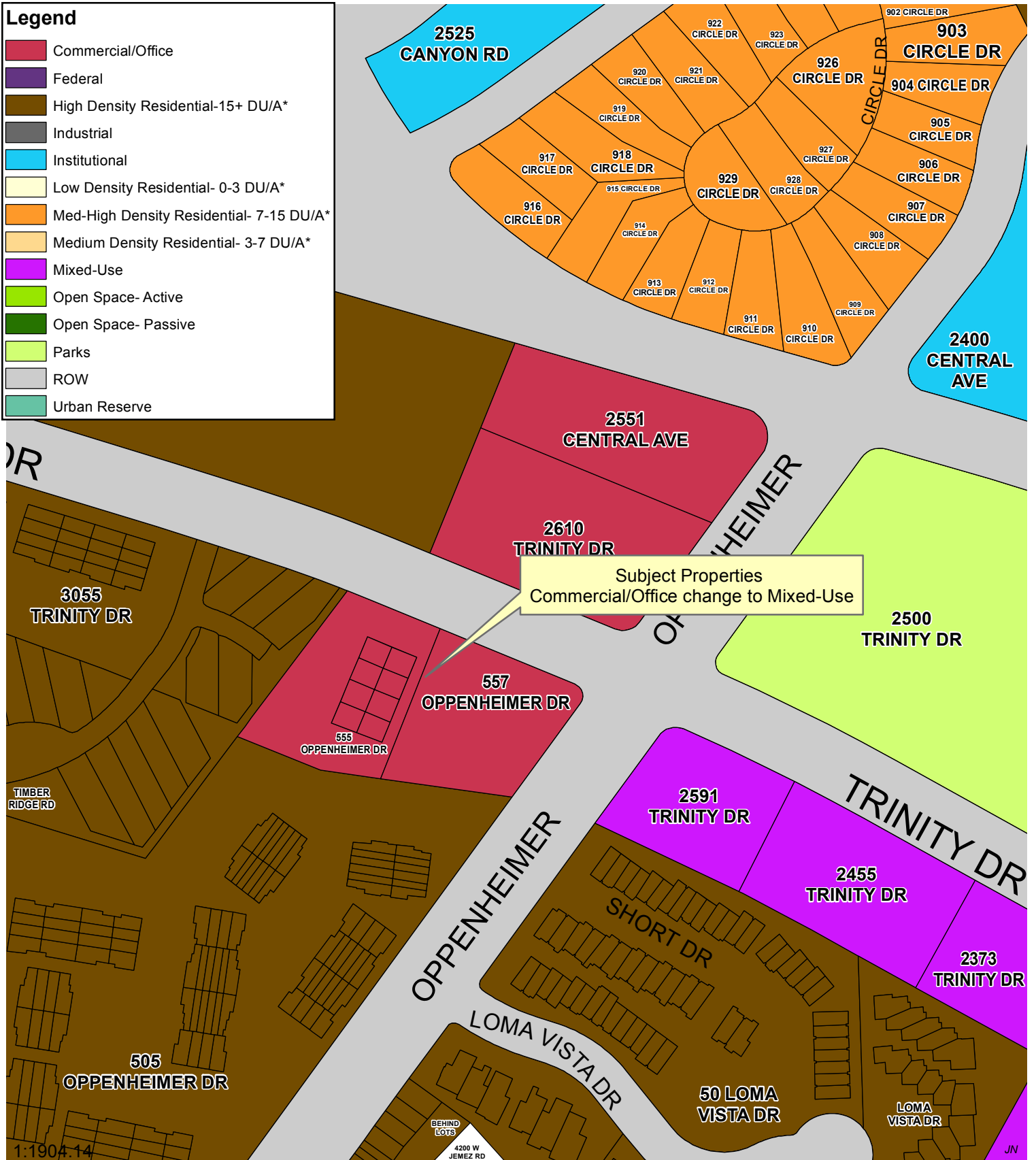
SCALE
1/8" = 1'-0"

DATE AND ISSUE
NOVEMBER 9, 2017

SHEET NUMBER
SPS-2

Legend

- Commercial/Office
- Federal
- High Density Residential-15+ DU/A*
- Industrial
- Institutional
- Low Density Residential- 0-3 DU/A*
- Med-High Density Residential- 7-15 DU/A*
- Medium Density Residential- 3-7 DU/A*
- Mixed-Use
- Open Space- Active
- Open Space- Passive
- Parks
- ROW
- Urban Reserve



555 Oppenheimer & 557 Oppenheimer Future Land Use Map

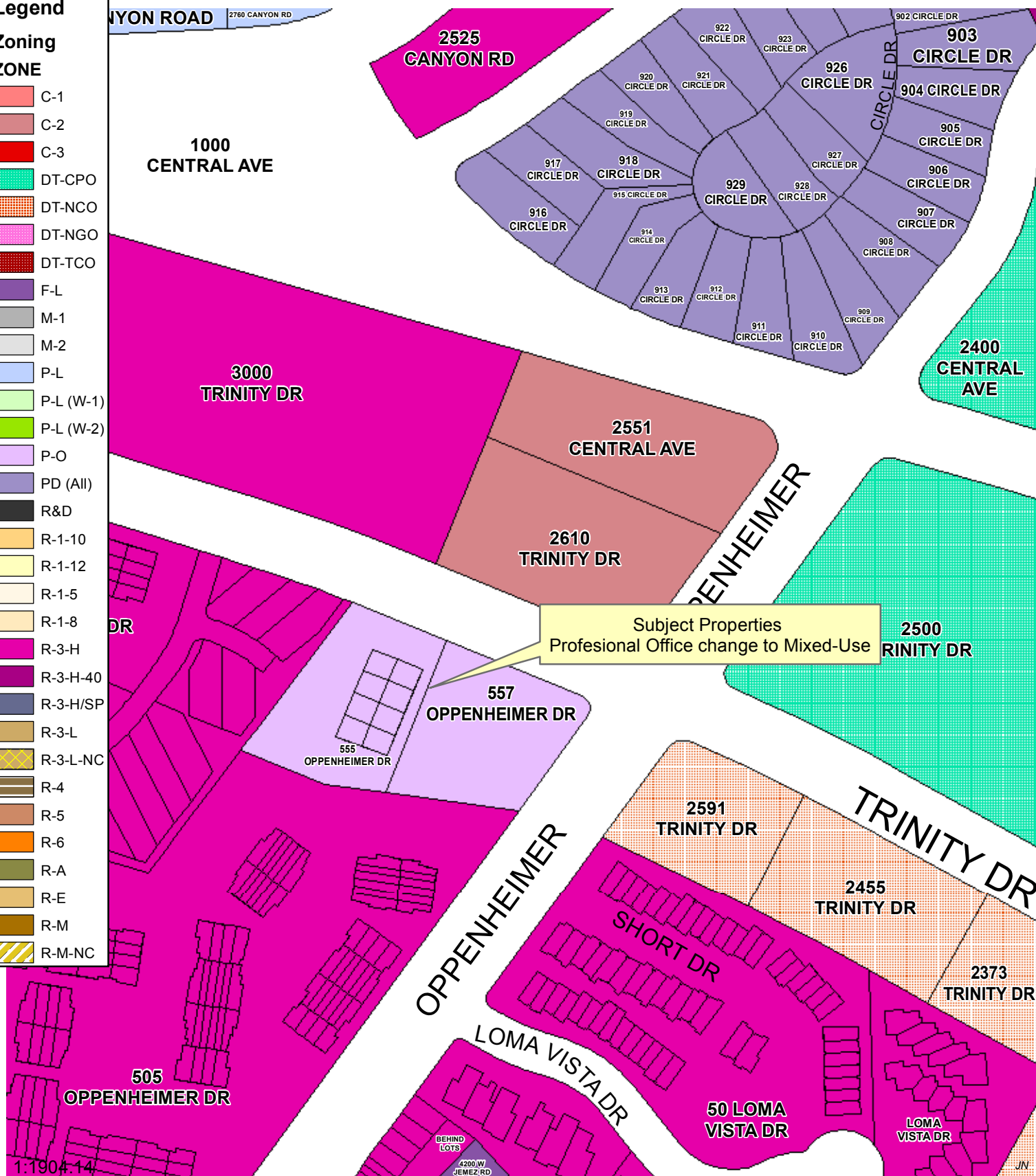
All mapping information is for reference only.
Users are solely responsible to confirm data accuracy.
Los Alamos County assumes no liability for errors
associated with these data.

Exhibit 2 Vicinity Maps for Future Land Use Designation and Rezoning



LOS ALAMOS

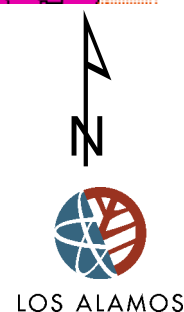
- Legend**
- Zoning**
- ZONE**
- C-1
 - C-2
 - C-3
 - DT-CPO
 - DT-NCO
 - DT-NGO
 - DT-TCO
 - F-L
 - M-1
 - M-2
 - P-L
 - P-L (W-1)
 - P-L (W-2)
 - P-O
 - PD (All)
 - R&D
 - R-1-10
 - R-1-12
 - R-1-5
 - R-1-8
 - R-3-H
 - R-3-H-40
 - R-3-H/SP
 - R-3-L
 - R-3-L-NC
 - R-4
 - R-5
 - R-6
 - R-A
 - R-E
 - R-M
 - R-M-NC



555 Oppenheimer & 557 Oppenheimer Rezone

All mapping information is for reference only.
Users are solely responsible to confirm data accuracy.
Los Alamos County assumes no liability for errors
associated with these data.

Exhibit 2 Vicinity Maps for Future Land Use Designation and Rezoning



VERTEX HOSPITALITY 1 LLC
51 BROADWAY SUITE 111
FARGO ND 58102

HAKONSON-HAYES AUDREY C
47 TIMBER RIDGE
LOS ALAMOS NM 87544

BRAND HOLMANN V REVOCABLE TRUST
3948 TRINITY DR
LOS ALAMOS NM 87544

CAP INVESTORS LIMITED PARTNERSHIP
1926 A 24TH ST
LOS ALAMOS NM 87544

LIER KARI
45 TIMBER RIDGE RD
LOS ALAMOS NM 87544

NELSON TIMOTHY & LINDA REVOC TRUST
242 GARVER LANE
WHITE ROCK NM 87547

REAL DEAL THEATER LLC
2610 TRINITY DR SUITE 4
LOS ALAMOS NM 87544

WALTHERS LIVING TRUST
44 TIMBER RIDGE RD
LOS ALAMOS NM 87544

RUTHERFORD STEVEN WILLIAM
2356 FERGUSON AVE
BOZEMAN, MT 59718

TIMBER RIDGE PROPERTY OWNERS
P O BOX 30
LOS ALAMOS NM 87544

SHERWOOD JANE C
43 TIMBER RIDGE RD
LOS ALAMOS NM 87544

NERI FILIPPO
505 OPPENHEIMER DR 206
LOS ALAMOS NM 87544

DEAL FAMILY LLC
2610 TRINITY DR SUITE 4
LOS ALAMOS NM 87544

VAN LYSSEL R M INC
2591 TRINITY DR
LOS ALAMOS NM 87544

HAN CLIFF S & LANA L
635 NAVAJO RD
LOS ALAMOS NM 87544

LOS ALAMOS COUNTY
P O BOX 30
LOS ALAMOS NM 87544

DAUN KEITH B & PATRICIA C
42 TIMBER RIDGE
LOS ALAMOS NM 87544

WIGGINS MINH & LEE
505 OPPENHEIMER DR #202
LOS ALAMOS NM 87544

LIM LA SEI REVOC TRUST
50 TIMBER RIDGE RD
LOS ALAMOS NM 87544

RIDGE PARK LUXURY CONDOMINIUMS
505 OPPENHEIMER DR
LOS ALAMOS NM 87544

FOISY JENEVRA M & TODD R
505 OPPENHEIMER #204
LOS ALAMOS NM 87544

CAO YOUFANG & WU XIAN
49 TIMBER RIDGE RD
LOS ALAMOS NM 87544

GRIFFIN JOE A & SHARON E REVOC TRUST
505 OPPENHEIMER #417
LOS ALAMOS NM 87544

DEMANGE PAUL & ALMA I
505 OPPENHEIMER #201
LOS ALAMOS NM 87544

SEDLACEK CHERYL M & WILLIAM B
48 TIMBER RIDGE RD
LOS ALAMOS NM 87544

CIDDIO JACQUELINE S
505 OPPENHEIMER DR 413
LOS ALAMOS NM 87544

OPSAHL RICHARD B & JUDITH E
501 PORTOLA RD 8100
PORTOLA VALLEY CA 94028

HSU HSIAO HUA & FLORENCE M
31 RIM ROAD
LOS ALAMOS NM 87544

ZEYTUN AHMET
2487A 45TH ST
LOS ALAMOS NM 875441624

LITTLE DENNIS J
505 OPPENHEIMER DR #211
LOS ALAMOS NM 87544

**Exhibit 3 List of property owners
of record within 100 yards**

KOGAN ALEKSANDR & BERMAN L
505 OPPENHEIMER DR 212
LOS ALAMOS NM 87544

PHILLIPS JOHN C TRUST
PO BOX 221
GALLINA NM 87017

WIBBERT ADRIANNE
505 OPPENHEIMER DR #316
LOS ALAMOS NM 87544

STEGER MARK J
505 OPPENHEIMER DR # 207
LOS ALAMOS NM 87544

VALDEZ SARAH A
505 OPPENHEIMER DR 112
LOS ALAMOS NM 87544

SHAO XUAN-MIN & YAN MEILIN REV TR
1327 SAN ILDEFONSO RD
LOS ALAMOS NM 87544

PETER WILLIAM K REV TRUST
5710 KINGSWOOD ROAD
BETHESDA MD 20814

ARVAI ANDREW S
7111 DENNISON PLACE
SAN DIEGO CA 92122

KIM CHANG YUB & HEUNGBOK
1620 SOLANA
LOS ALAMOS NM 87544

NAJERA LORENZO & CHERISE
4934 DREAM DANCER DR NE
RIO RANCHO NM 87144

KOOP MYRON L
505 OPPENHEIMER DR 108
LOS ALAMOS NM 87544

SHULL CHARLES A & BILLIE B REV TRUST
400 OPPENHEIMER DR
LOS ALAMOS NM 87544

ZHAO XINXIN & SHAOPING CHU
191 PIEDRA LOOP
WHITE ROCK NM 87547

TRAHAN ALEXIS & TRAVIS & KAPLAN FAMILY TRUST
PO BOX 2342
STATELINE NV 89449

FISCHER SAMUEL & KRAEMER CHRISTINA
5250 QUEMAZON
LOS ALAMOS NM 87544

BOROVINA DAN L & KAREN G
3056 MONTE SORENO
SANTA FE NM 87506

NASISE JOSEPH E & ROBERT S
13930 PARK PLACE
RED BLUFF CA 96080-7939

LITTLE DENNIS
505 OPPENHEIMER DR 305
LOS ALAMOS NM 87544

MODL DAVID G & RIEBE JOYCE J REVOC TRUST
6800 NAGOYA RD NE
RIO RANCHO NM 87144

SMELTZER MARLENE E
505 OPPENHEIMER DR #109
LOS ALAMOS NM 87544

QUINTANA AUDREY J L
3003 CALLE QUIETA
SANTA FE NM 87507

HAN SHUNSHENG & LENG NA
505 OPPENHEIMER DR #101
LOS ALAMOS NM 87544

OPPENHEIM ELIZABETH J
505 OPPENHEIMER DR 318
LOS ALAMOS NM 87544

GUTIERREZ REVOC TRUST
9 PRIMROSE LANE
LOS ALAMOS NM 87544

KATZ MAURICE & ELIZABETH
PO BOX 290
TESUQUE NM 87574

EPPLER CAROLYN
150 WEST 58ST 11A
NEW YORK NY 10019

COFFIN FAMILY TRUST
3727 N KINGS PEAK CIRCLE
MESA AZ 85215-7745

SANCHEZ MARK & TERRY
423 RIVERSIDE DR
ESPANOLA NM 87532

CARLTON PROPERTIES
P.O. BOX 1073
GOLDEN CO 80402

ORTIZ STEPHANIE BOONE
275 EL VIENTO ST
LOS ALAMOS NM 87544-2419

**Exhibit 3 List of property owners
of record within 100 yards**

YOUNG JUDITH
505 OPPENHEIMER DR #409
LOS ALAMOS NM 87544

HGC LLC
1625 SONRISA
LOS ALAMOS NM 87544

ADKINS PROPERTIES LLC
5514 AMIGO WAY NE
ALBUQUERQUE NM 87111

MULLEN MARK F
505 OPPENHEIMER DR #410
LOS ALAMOS NM 87544

ROBERTS PATRICIA A REVOC TRUST & GARTZ
6 DESERT RAIN
SANTA FE NM 87506

TRUSSING SOLUTIONS LTD
1720 Louisiana Blvd NE, Ste 402
ALBUQUERQUE NM 87110

HALL MARICA
P.O. BOX 1308
LOS ALAMOS NM 87544

DINKEL JAMES A & ROBIN
P O BOX 1414
LOS ALAMOS NM 87544

SAENZ JASON
46 SHORT DR
LOS ALAMOS NM 87544

OWCZAREK ROBERT M & MAKARUK HANNA E
505 OPPENHEIMER DR 320
LOS ALAMOS NM 87544

DINKEL JAMES A & ROBIN A
P.O. BOX 1414
LOS ALAMOS NM 87544

MILLER JEFFREY L REVOC TRUST
44 SHORT DR
LOS ALAMOS NM 87544

MONTOYA THERESA V
505 OPPENHEIMER DR #301
LOS ALAMOS NM 87544

TREASTER BYRON L/GRAY JANE L
P O BOX 659
TESUQUE NM 87574

SANDIN JAN HENRIK
50 SHORT DR
LOS ALAMOS NM 87544

MOAZZAMI RHETA P
505 OPPENHEIMER DR 302
LOS ALAMOS NM 87544

LOS ALAMOS PROF INVEST PARTNER
P.O. BOX 9146
SANTA FE NM 87504

FRANK DAVID F
54 SHORT DR
LOS ALAMOS NM 87544

BECKMAN MARY
P O BOX 2798
SANTA FE NM 87504

LISA SHIN LLC
637 47TH ST
LOS ALAMOS NM 87544

CLANTON ROBERT C
53 SHORT DR
LOS ALAMOS NM 87544

HARRIS JANET M
505 OPPENHEIMER DR #312
LOS ALAMOS NM 87544

BOROVINA DAN & KAREN
32 SHORT DR
LOS ALAMOS NM 87544

DUQUE ISABEL C
51 SHORT DR
LOS ALAMOS NM 87544

GUTIERREZ BENJAMIN S & ALICE R REV TR
9 TIMBER RIDGE RD
LOS ALAMOS NM 87544-2317

ANGELO FAMILY TRUST
221 TURKEY TRACK TRAIL
CANYON TX 79015

MARIAM FESSEHA
49 SHORT DR
LOS ALAMOS NM 87544

LAMBERT LINDA K
15 LOMA VISTA ST
LOS ALAMOS NM 87544

CAFFREY MICHAEL
PO BOX 1222
LOS ALAMOS NM 87544

SMITH J ALLYN & ODERMANN JEANNE M
1030 HAGGARD DR
CLARKSVILLE TN 37043-5643

**Exhibit 3 List of property owners
of record within 100 yards**

MILLER JASON C
41 SHORT DR
LOS ALAMOS NM 87544

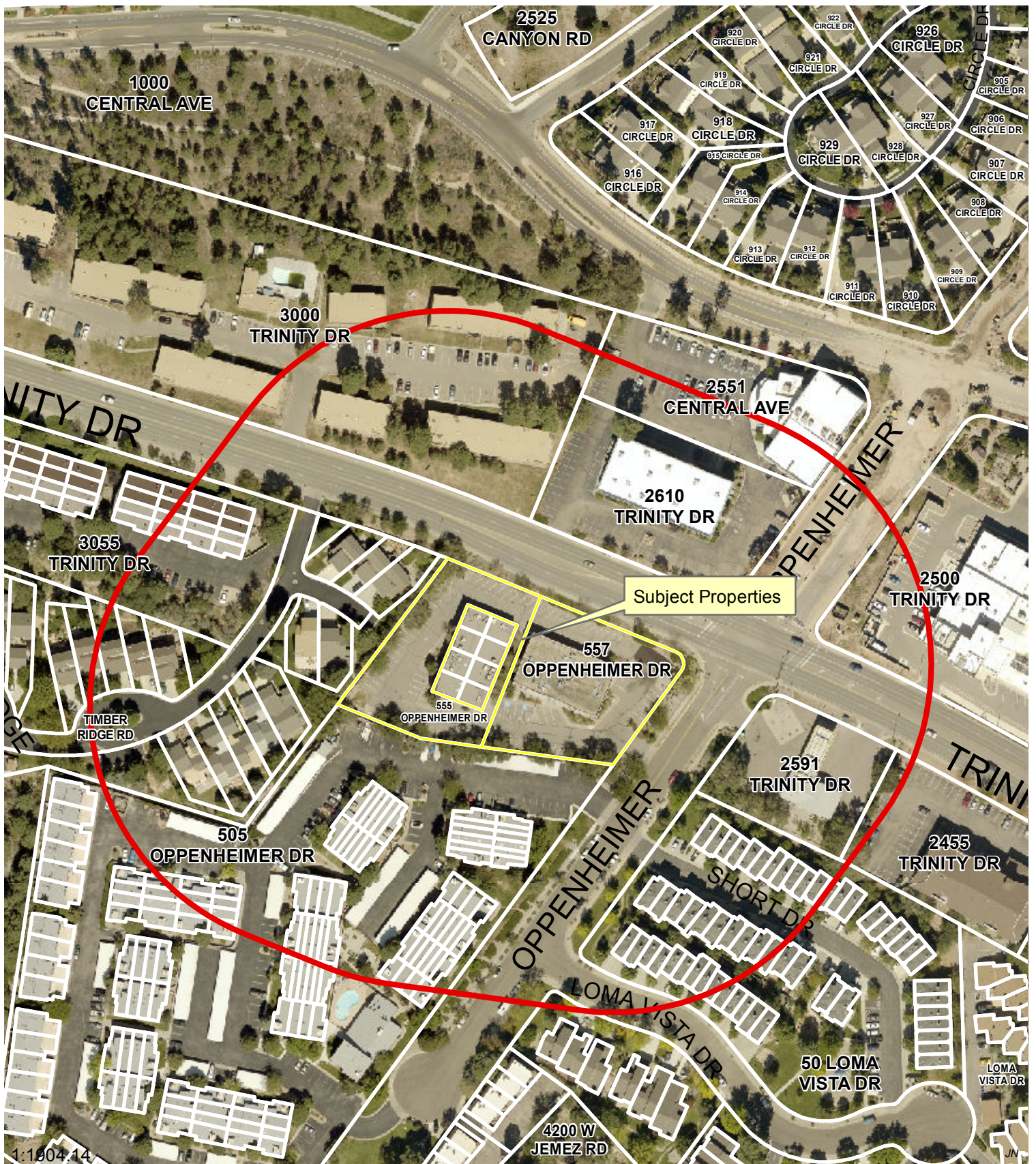
XIE GARY GANG & HSU HUI-WEN REVOC TRUST
2310 CANYON GLEN
LOS ALAMOS NM 87544

JARAMILLO COX MARGARET 2011 IRREVOC TRUS
301 GRIFFIN ST.
SANTA FE NM 87501

SULLIVAN GRAHAM ENID JOAN REVOC TRUST
5070 CARRIAGE HOUSE
LOS ALAMOS NM 87544

LOMA VISTA LLP
21 CAMINO A LAS ESTRELLAS
PLACITAS NM 87043

GARNER BOROVINA PROPERTIES LLC
3056 MONTE SERENO DR
SANTA FE NM 87506



555 Oppenheimer & 557 Oppenheimer 300' Notice

All mapping information is for reference only.
Users are solely responsible to confirm data accuracy.
Los Alamos County assumes no liability for errors
associated with these data.

**Exhibit 3 List of property owners
of record within 100 yards**



LOS ALAMOS



IDRC REPORT

Cases: CPA-2017-0005, REZ- 2017- 0009, & SIT-2017-0023 557 OPPENHEIMER DRIVE

Date of Meeting: November 17, 2017

Member/ Alternate	Dept.	Attended	Recommended Conditions/Comments	Approved	Approved conditions	Abstained
M. Arellano / J. Dudziak	Building	X			X	
T. Baer /	Planning					
D. Erickson	Traffic					
J. Alarid / C. Moseley	Utilities	X			X	
A. Gurule / L. Martinez	Env. Serv.					
E. Martinez/ B. Aragon	PW	X			X	
A. Millmann / J. Naranjo	Planning	X			X	
J. Wetteland / S. Rinaldi	Fire	X			X	
OTHERS ATTENDING:						
A Barela	Planning	X			X	
Paul Andrus	CDD					
K Powers	PW					
M Smith	IM					
Joanie Ahlers	Econ Dev					
* Blue strikethrough indicates not present at meeting.						

MOTION: Steve Rinaldi moved and Eric Martinez seconded that Case SIT-2017-0023 be forwarded to the P&Z Commission with a recommendation for approval with the understanding that the stated concerns and conditions* discussed by IDRC are addressed prior to submittal of the final plat.

Motion passed 7-0

Michael Arellano moved and Steve Rinaldi seconded that Case REZ- 2017- 0009 be forwarded to the P&Z Commission with a recommendation for approval with the understanding that the stated concerns and conditions* discussed by IDRC are addressed prior to submittal of the final plat.

Motion passed 7-0

Subsequent to the Nov 17, 2017 meeting, Michael Arellano moved and James Alarid seconded that Case CPA-2017-0005 be forwarded to the P&Z Commission with a recommendation for approval with the understanding that the stated concerns and conditions* discussed by IDRC are addressed prior to submittal of the final plat.

Motion passed 7-0

*All conditions as discussed are included as Recommended Conditions of Approval in the combined Staff Report for Comprehensive Plan Future Land Use Amendment, Rezoning, and Site Plan.



1 – From Oppenheimer Drive Looking West



2 – From Intersection of Oppenheimer Drive and Trinity Drive, Looking Southwest



3 – View from Trinity Drive of 555 Oppenheimer Drive



4 – Space between 555 & 557 Oppenheimer Drive, looking south from Trinity Drive



5 – View from Trinity Drive showing parking along north side of both structures



6 – West Property Line



7 – Parking along north side of property



8 – View from Southwest corner of property



9 – 557 Oppenheimer Drive



10 – Parking along south side of property



11 – Parking along south property boundary



County of Los Alamos

Staff Report

January 10, 2018

Los Alamos, NM 87544
www.losalamosnm.us

Agenda No.: A.

Index (Council Goals):

Presenters:

Legislative File: 10280-18

Title

Minutes from the Planning And Zoning Commission Meeting(s) on December 13, 2017.

Recommended Action

I move that the Commission approve the Minutes for December 13, 2017..

Attachments

A - Draft Minutes for December 13, 2017.



County of Los Alamos

Minutes

Planning and Zoning Commission

1000 Central Avenue
Los Alamos, NM 87544

Michael Redondo, Chair; Ashley Mamula; Larry Warner; Melissa Arias; Craig Martin; Jessie Dixon; and Amy Woods, Commissioners.

Wednesday, December 13, 2017

5:30 PM

Council Chambers
1000 Central Avenue

1. CALL TO ORDER/ROLL CALL

Present 7 - Chair Redondo, Commissioner Arias, Commissioner Dixon, Commissioner Mamula, Commissioner Martin, Commissioner Warner and Commissioner Woods

2. PUBLIC COMMENT

3. APPROVAL OF AGENDA

4. PUBLIC HEARING(S)

- A. Case No. SUP-2017-0011:
A Special Use Permit to permit the placement of an accessory Apartment, located at 196 El Rayo Street and a Waiver to allow the accessory building to be built to 16 feet in height.

Attachments: [196 El Rayo Staff Report](#)

- B. Case No. WVR-2017-0051:
A-19 Waiver and Subdivision Scott Eddings, P.E., agent for Adam Thornton, owner, requests a Waiver to Los Alamos County Code of Ordinances, Chapter 16 - Development Code, Article XIII, Site Development Requirements Table, Minimum Lot Frontage of 50 feet, for nine lots within the proposed subdivision of Lot A-19-A-1.

Case No. SUB-2017-0004:
A-19 Preliminary Subdivision Plat Scott Eddings, P.E., agent for Adam Thornton, owner, requests a Waiver to Los Alamos County Code of Ordinances, Chapter 16 - Development Code, Article XIII, Site Development Requirements Table, Minimum Lot Frontage of 50 feet, for nine lots within the proposed subdivision of Lot A-19-A-1.

Attachments: [CompleteSubWvrStaffReport.pdf](#)

Commissioner Mamula moved to approve Case No. SUB-2017-0004, a request for approval of a Subdivision: A Preliminary Subdivision Plat creating 160 new residential lots and one commercial lot pertaining to the Property as described, and known as A-19. I so move for the reasons stated in the staff report and per testimony at the public hearing, and subject to the conditions listed in the staff report, with the following conditions:

1. A cul-de-sac or other turnaround approved by Public Works shall be provided at the far western end of Sherwood Boulevard.
2. The applicant shall submit a Final Subdivision Plat for Planning and Zoning Commission approval, which is in substantial conformance with the Preliminary Plat.
3. All design issues must be resolved to the satisfaction of the County Engineer and the Utilities Manager prior to approval of Final Plat.
4. Drawings submitted for Final Plat must be at 95% or greater completion.
5. Add keyed notes and provide corrections to utility pipe sizes and materials per redline comments from the Utilities Manager transmitted on December 8, 2017.
6. All easements must be shown and labeled on the plat. Anything other than ROW needs a defined use easement, including any shared utility, drainage and/or pedestrian easements.
7. Provide evidence of performance bond prior to grading.

8. Place the following note, or similar language, on the plat, overlapping the westernmost portion of Lot 2B (Tract C) and the easternmost portion of A-1 (Tract A), "Future recreational facilities by County."

9. Per the terms of the Development Agreement for A-19-A-2, the developer shall submit plans for the development of the commercial tract, Tract D, no later than 60 months from the date of closing on A-19-A-2, or September 22, 2022.

10. Street lighting shall be provided per the standards in the Los Alamos County Code of Ordinances, Chapter 16, Sec. 16-276 – Outdoor Lighting, and subject to approval by the County Engineer. La Vista and Sherwood (NM 4 to the commercial lot line) qualify as an RLDC-5 (continuous lighting), while the local streets qualify under RLDC-4 (roadway with lighted intersections and partial lighting). Partial lighting shall be provided at curvatures in the roadway and at cul-de-sacs.

11. An updated Traffic Impact Analysis (TIA) shall be provided prior to Final Plat. Include updates to trip distribution and capacity analysis, and a traffic signal warrant study at both intersections, noting at what stage of development signals will be warranted.

12. Provide an updated drainage report comparing the assumptions of the Master Drainage Study to the development as currently proposed, including drainage area and design storm for storm sewer and structures.

13. Provide grading details along with details for proposed drainage structures, stormwater, erosion, stabilization and sediment controls, including any proposed Low Impact Development (LID)/green infrastructure stormwater management techniques.

14. Project Engineer shall perform an analysis of the Fire Code (NFPA 101) to determine if the residence on Lot 27, Block 1 must be sprinklered. If it is required, this shall be noted on the plat.

15. Provide additional stormwater inlets subject to the approval of the County Engineer to prevent on-lot flooding.

16. Street names are subject to approval by the County Surveyor and P&Z on the Site Plan and Final Plat. Propose a different name for "Valle" as the County already has streets named "Valle del Sol" and "Valle Vista". A street name

should not change in the middle of its course. It is recommended that “Valle” and “Cadena” Streets be renamed “Cadena Loop”.

17. Show lot addresses as assigned by the County Surveyor on the Final Plat.

18. Water lines must be fully looped throughout the site per the direction of the Utilities Manager.

19. Submit Plan & Profile information subject to approval of the County Engineer and Utilities Manager prior to Final Plat.

20. Label plat to show Public Access Easements through the subdivision.

Commissioner Woods seconded the motion.

The motion Passed 7-0

and;

Commissioner Warner moved to approve Case No. WVR-2017-0051 a request for approval of a Waiver to the 50-foot frontage requirement for nine lots within the proposed subdivision of Lot A-19-A-1. I so move for the reasons stated in the staff report and per testimony at the public hearing, and subject to approval of the Subdivision Plat.

2. Case No. WVR-2017-0051: A-19 Waiver

A request for a Waiver to Los Alamos County Code of Ordinances, Chapter 16 – Development Code, Article XIII, Site Development Requirements Table, Minimum Lot Frontage of 50 feet, for nine lots within the proposed subdivision of Lot A-19-A-1 ,

Commissioner Woods seconded the motion.

The motion Passed 7-0

Yes: 7 - Chair Redondo, Commissioner Arias, Commissioner Dixon, Commissioner Mamula, Commissioner Martin, Commissioner Warner and Commissioner Woods

C.

Case No. SIT-2017-0024: A-19 Site Plan

Scott Eddings, P.E., agent for Adam Thornton, owner, requests Site Plan approval to develop 160 residential lots on Tracts A-19-A-1 and A-19-A-2A being a part of the Ramon Vigil Grant. The two lots total 47.29+ acres and are zoned R-1-5 (Single-family residential) and DT-NCO (Downtown - Neighborhood Center Overlay), respectively.

Attachments: [A - Staff Report Case No. SIT-2017-0024: A-19 Site Plan](#)

Commissioner Dixon moved to approve Case No. SIT-2017-0024, a request for a Site Plan, pertaining to the Property as described, and known as A-19. I so move for the reasons stated in the staff report and per testimony at the public hearing with the following conditions:

1. A cul-de-sac or other turnaround approved by Public Works shall be provided at the far western end of Sherwood Boulevard.
2. Place the following note, or similar language, on the Site Plan within the westernmost portion of Lot 2B, "Future recreational facilities by County."
3. Developer shall provide a proposed plant list for County review.
4. To the extent to which they can apply, the Design Guidelines for Tracts for A-19-A-1 and A-19-A-2 shall govern the development of this property.
5. Per the terms of the Development Agreement for A-19-A-2, the developer shall submit plans for the development of the commercial tract, Tract D, no later than 60 months from the date of closing on A-19-A-2, or September 22, 2022.
6. Street lighting shall be provided per the standards in the Los Alamos County Code of Ordinances, Chapter 16, Sec. 16-276 – Outdoor Lighting, and subject to approval by the County Engineer. La Vista and Sherwood (NM 4 to the commercial lot line) qualify as an RLDC-5 (continuous lighting), while the local streets qualify under RLDC-4 (roadway with lighted intersections and partial lighting). Partial lighting shall be provided at curvatures in the roadway and at cul-de-sacs.
7. Provide an updated drainage report comparing the assumptions of the Master Drainage Study to the development as currently proposed, including drainage area and design storm for storm sewer and structures.
8. Street names are subject to approval by the County Surveyor and P&Z on the Site Plan and Final Plat. Propose a different name for "Valle" as the County already has streets named "Valle del Sol" and "Valle Vista". A street name should not change in the middle of its course. It is recommended that "Valle" and "Cadena" Streets be renamed "Cadena Loop".
9. Label Public Access Easements.
10. Per the terms of the Development Agreement for A-19-A-2, the developer shall submit plans for the development of the commercial tract, Tract D, no later than 60 months from the date of closing on A-19-A-2, or September 22, 2022.
11. Depict street lighting locations, as approved by the County Engineer, on the Site Plan.
12. Depict fire hydrants, cluster mailbox locations, and all other improvements and amenities on the Site Plan.
13. Provide graphic scale and north arrow on Site Plan.

Commissioner Woods Seconded the motion

Yes: 7 - Chair Redondo, Commissioner Arias, Commissioner Dixon, Commissioner Mamula, Commissioner Martin, Commissioner Warner and Commissioner Woods

5. PLANNING AND ZONING COMMISSION BUSINESS

- A. Minutes from the Planning And Zoning Commission Meeting(s) on August 23, 2017

Attachments: [Minutes23-Aug-2017.pdf](#)

I move that the Commission approve the Minutes for August 23, 2017

6. COMMISSION/DIRECTOR COMMUNICATIONS

- A. Department Report**
- B. Chair's Report**
- C. Committee Reports**
- D. Board of Adjustment Report**
- E. Commissioner's Comments**

7. PUBLIC COMMENT

8. ADJOURNMENT

PLEASE NOTE: Any action by the Planning and Zoning Commission in granting approval, conditional approval or disapproval of an application may be appealed by the applicant or by persons who have a personal or pecuniary interest adversely affected by the decision as defined by Section 16-454 of the County Code. Such appeals must be filed with the Community Development Department within 15 days of the action in accordance with Section 16-492.

If you are an individual with a disability who is in need of a reader, amplifier, qualified sign language interpreter, or any other form of auxiliary aid or service to attend or participate in the hearing or meeting, please contact the County Human Resources Division at 505-662-8040 at least one week prior to the meeting or as soon as possible.

Public documents, including the agenda and minutes can be provided in various accessible formats. Please contact the personnel in the Community Development Department Office at 505-662-8006 if a summary or other type of accessible format is needed.