



County of Los Alamos

1000 Central Avenue
Los Alamos, NM 87544

Agenda - Final Environmental Sustainability Board

*James Robinson, Chair; Heidi Rogers, Vice-Chair: Susan Barns;
John Bliss; Sarah Terrill, and Heather Ward, Members*

Thursday, March 15, 2018

5:30 PM

Council Chambers - 1000 Central Avenue

1. **CALL TO ORDER - ROLL CALL**

2. **PUBLIC COMMENT**

*This section of the agenda is reserved for comments from the public
on items that are not otherwise included in this agenda.*

3. **APPROVAL OF AGENDA**

4. **APPROVAL OF MINUTES**

- A **10551-18** Approval of the February 15, 2018, Environmental Sustainability Board Minutes

Presenters: James Robinson

Attachments: [A - Draft ESB Minutes February 15, 2018](#)

5. **BOARD BUSINESS**

- A **10573-18** Recruitment Update for ESB Vacancies

Presenters: James Robinson

- B **10557-18** Review and Discuss the Open Forum Survey Results for Residential Collection of Yard Trimming and Recycle Roll Carts

Presenters: Angelica Gurule

Attachments: [E - Open Forum Survey Results](#)
[F - Draft Alternating Schedule for 2018-2019](#)

- C **10556-18** Yard Trimming Roll Cart Implementation Plan

Presenters: Angelica Gurule

Attachments: [D - Yard Trimming Implementation Plan](#)

- D 10552-18** How to Beat Residential Recycling Contamination - Presentation Overview
- Presenters:** Don Machen
- Attachments:** [B - How to Beat Residential Recycling Contamination PowerPoint Presentation](#)
[C - Webinar Q & A](#)
- E 10558-18** Discuss the 2018 Business Recycler of the Year
- Presenters:** James Robinson
- Attachments:** [G - Los Alamos County Recycler of the year criteria](#)
- F 10561-18** Technical Widget
- Presenters:** James Robinson

6. REPORTS

A Chair's Report - James Robinson

B Board Member Reports

C Liaison's Reports

- 1) Board of Public Utilities - Sue Barns
- 2) Planning and Zoning Commission - John Bliss/Sarah Terrill
- 3) Transportation Board - Heather Ward/Don Machen
- 4) Parks and Recreation Board - James Robinson/Heidi Rogers
- 5) County Council Liaison - Pete Sheehey

D Subcommittee Reports

- 1) Los Alamos Public Schools Subcommittee - Angelica Gurule/Heather Ward
- 2) Save As You Throw Subcommittee - Sue Barns

A 10574-18 Waste Zero - Presentation Overview

Presenters: Susan Barns

Attachments: [I - Overview of the Save-As-You-Throw Approach to Residential Waste Reduction](#)

7. STAFF REPORT**A 10555-18 Planning for Environmental Sustainability Board Upcoming Events**

Presenters: Angelica Gurule

B 10553-18 February 2018 Residential Sustainability Report

Presenters: Angelica Gurule

Attachments: [H - Residential Sustainability Report - February 2018](#)

8. PREVIEW OF UPCOMING AGENDA ITEMS**9. ADJOURNMENT**

If you are an individual with a disability who is in need of a reader, amplifier, qualified sign language interpreter, or any other form of auxiliary aid or service to attend or participate in the hearing or meeting, please contact the County Human Resources Division at 662-8040 at least one week prior to the meeting or as soon as possible. Public documents, including the agenda and minutes can be provided in various accessible formats. Please contact the personnel in the Community Services Administration Office at 662-8163 if a summary or other type of accessible format is needed.



County of Los Alamos

Staff Report

March 15, 2018

Los Alamos, NM 87544
www.losalamosnm.us

Agenda No.:

Index (Council Goals):

Presenters: James Robinson

Legislative File: 10551-18

Title

Approval of the February 15, 2018, Environmental Sustainability Board Minutes

Recommended Action Motion

I move that the Environmental Sustainability Board approve the February 15, 2018, minutes as presented.

Or

I move that the Environmental Sustainability Board approve the February 15, 2018 minutes as amended.

Body

The ESB will review and approve the February 15, 2018, Environmental Sustainability Board Minutes.

Attachments

A - Draft ESB Minutes February 15, 2018



County of Los Alamos

1000 Central Avenue
Los Alamos, NM 87544

Minutes

Environmental Sustainability Board

*James Robinson, Chair; Heidi Rogers, Vice-Chair; Susan Barns; John Bliss; Sarah Terrill,
and Heather Ward, Members*

Thursday, February 15, 2018

5:30 PM

1000 Central Avenue, Suite 110

1. CALL TO ORDER - ROLL CALL

The ESB Chair, James Robinson, called the meeting to order at 5:31 p.m. The following members were in attendance:

Present: Board Chair Robinson, Vice Chair Rogers, Member Barns, Member Bliss and Member Terrill

Absent: Member Ward

2. PUBLIC COMMENT

William Schueler, NMED Solid Waste Bureau Permit Officer, advised that due to the China Ban, Friedman Recycling is having more difficulty finding end markets and have been rejecting loads that are highly contaminated. Mr. Schueler suggested that the ESB make a plan to keep the public informed.

3. APPROVAL OF AGENDA

A motion was made by Member Terrill, seconded by Member Bliss, that the agenda be approved as presented.

The motion passed unanimously.

4. APPROVAL OF MINUTES

- A. [10421-18](#) Approval of the January 18, 2018, Environmental Sustainability Board Minutes

Presenters: James Robinson

Attachments: [A - Draft ESB Minutes January 18, 2018](#)

A motion was made by Member Rogers, seconded by Member Barns, that the minutes be approved as presented.

The motion passed with four votes. Member Bliss abstained, he was not present at the January meeting.

5. BOARD BUSINESS

10424-18 Review and Approve FY19 ESB Work Plan

Presenters: James Robinson

Attachments: [F - Draft FY19 ESB Work Plan](#)

The Environmental Sustainability Board reviewed and discussed the FY19 ESB Work Plan.

A motion was made by Member Bliss, seconded by Member Rogers that the Environmental Sustainability Board approve the FY19 ESB Work Plan as presented.

The motion passed unanimously.

10427-18 Discuss the 2018 Business Recycler of the Year

Presenters: Angelica Gurule

The Environmental Sustainability Board discussed and began planning the 2018 Business Recycler of the Year Award. Items discussed included: Business Recycler of the Year and School Recycler of the Year, defining sustainability requirements in press release prior to soliciting nominations, gathering nominations at Earth Day, window decal for winners and possible recognition from the Chamber of Commerce. The tentative award date is June 8th at Chamber Fest. This item will be discussed further at the March ESB meeting.

10429-18 Update from County Council Work Session on February 6, 2018

Presenters: James Robinson

Board Chair Robinson reported that feedback received from the presentation given to County Council at the Work Session on February 6th included: Council is impressed with the ESB and John Bliss was recognized for his outstanding service as Board Chair. Council is excited about the Incentive Based Sustainability Program RFP and the Yard Trimming roll cart program. Councilors expressed interest about Save As You Throw and where it might go. They also asked for a reminder schedule if recycle and yard trimmings are collected alternately. Recommendations included feasibility of donating free loads to residents and quarterly clean ups.

10430-18 Discuss Liaison Assignments

Presenters: James Robinson

Member Bliss and Member Terrill volunteered to team up to cover the Planning and Zoning Commission until their terms end in July. Don Machen is a Transportation Board Member and can continue to report on that board, so that Member Ward might be available for another assignment. Board Chair Robinson will attend the Parks and Recreation Board meetings until a new member is assigned. The board agreed that Member Rogers will no longer be the liaison for the Arts in Public Places Board, so that she is available to cover the other boards when members are unable to attend. Board Chair Robinson mentioned that both the Tourism and Citizen in Action Boards will be established soon and a liaison from the ESB could be beneficial.

6. REPORTS**A. Chair's Report - James Robinson**

Board Chair Robinson reported that the ESB is being given as an example of excellent board/staff relationships and cooperation. Additionally, five applications were received for the ESB and interviews have been completed. The recommendation to Council will be to offer the position to three applicants to cover the current vacancy and the vacancies coming in July.

B. Board Member Reports

No Report Provided

C. Liaison's Reports**1). Board of Public Utilities - Sue Barns**

Member Barns reported that items discussed at the Small Modular Reactor public meeting January 25th included: Questions and answers from public, a decision will be made soon how much more money to invest in the project, which could be between \$500,000 and \$3,500,000. There will be a joint meeting of County Council and the Board of Public Utilities on February 27th. March 5th staff is scheduled to make a decision on whether to move forward and March 6th the DPU will make their recommendation to County Council. An open forum survey is live now.

2). Planning and Zoning Commission - James Robinson

Board Chair Robinson reported that the Planning and Zoning meeting was cancelled. Angelica Gurule, Staff Liaison reported that items to be discussed at Interdepartmental Review Committee meeting includes: waivers on setbacks and carports.

3). Transportation Board - Heather Ward

Don Machen reported that items discussed during the Transportation Board meeting included: approved proposed two time limited parking spots on Central Avenue in front of post office and Joshua Levings did a wonderful job presenting the Environmental Sustainability Plan.

4). Parks and Recreation Board

Board Chair Robinson reported that items discussed during the Parks and Recreation meeting included updating parks.

5). Art in Public Places Board - Heidi Rogers

No Report Provided

6). County Council Liaison - Pete Sheehey

Councilor Sheehey reported that items discussed during recent County Council meetings includes: Small Modular Reactor wants a decision by April, but could be delayed. Parks and Recreation Board is short members, one applicant to the ESB applied to both boards. Councilor Sheehey is trying to determine which board he is better suited for. Feedback from the Work Session on February 6th was positive, the presentation was good and both ESB and staff are appreciated.

D. Subcommittee Reports**1). Los Alamos Public Schools Subcommittee - Angelica Gurule**

Staff Liaison, Angelica Gurule reported that editing of the Zero Waste Lunch Video is complete and will premiere the LAPS School Board meeting on February 22nd and will begin running at the Reel Deal Theater on Friday, February 23rd. The new solid waste truck will also be presented at the LAPS School Board Meeting on February 22nd, the two students that designed the artwork will be present for pictures. Currently, the LAPS subcommittee has two members, any members interested in joining are asked to let Angelica know.

2). Save As You Throw Subcommittee - Sue Barns

Member Barns reported that items discussed at the February 15th SAYT meeting included: initiatives for coming months to include outreach at local events, Julie Habiger will be invited to an upcoming meeting to discuss gathering public feedback and members will continue calling communities with similar programs/demographics to gather more information.

7. STAFF REPORT**A. [10423-18](#) Review and Discuss the Environmental Services FY18 Quarter 2 Financial Report**

Presenters: Angelica Gurule

Attachments: [E - FY18 Budget Performance](#)

The Environmental Sustainability Board reviewed and discussed the Environmental Services financial report for FY18 quarter 2 (October 1, 2017 - December 31, 2017). The most recent rate increase went into effect on September 1, 2017.

B. [10422-18](#) Review and Discuss 2017 NMED Annual Reports

Presenters: Angelica Gurule

Attachments: [D - NMED Annual Report Graph](#)
[C - 2017 NMED Annual Report for Landfill](#)
[B - 2017 NMED Annual Report for Eco Station](#)

The Environmental Sustainability Board reviewed and discussed the 2017 NMED Annual Report, which is due annually by February 14th. The report for the Eco Station and Closed Landfill was submitted to NMED in compliance with Solid Waste Rules.

C. [10428-18](#) January 2018 Residential Sustainability Report

Presenters: Angelica Gurule

Attachments: [G-Residential Sustainability Report - January 2018](#)

Staff Liaison, Angelica Gurule reported that the residential diversion rate is down from 25% in December to 22% in January due to no quarterly brush collection, however holiday trees were collected in January.

8. PREVIEW OF UPCOMING AGENDA ITEMS

1. Upcoming Events: Earth Day, Clean Up Los Alamos Day, Recycle Fashion Show, Science Fest
2. Zero Waste Lunch Video
3. Schedule Trash Audits
4. Business/School Recycler of the Year
5. Yard Trimming Survey Results and Implementation Plan for Yard Trimming Carts
6. Food Waste Collection: Develop Budget and Define Regulatory Hurdles
7. Call Out for Technical Widget Award to Promote Sustainability
8. Discuss National Sword
9. Compost Facility Update: Jack Richardson

9. ADJOURNMENT

A motion was made by Member Barns, seconded by Member Terrill, that the meeting be adjourned.

The meeting adjourned at 7:51 p.m.

If you are an individual with a disability who is in need of a reader, amplifier, qualified sign language interpreter, or any other form of auxiliary aid or service to attend or participate in the hearing or meeting, please contact the County Human Resources Division at 662-8040 at least one week prior to the meeting or as soon as possible. Public documents, including the agenda and minutes can be provided in various accessible formats. Please contact the personnel in the Community Services Administration Office at 662-8163 if a summary or other type of accessible format is needed.



County of Los Alamos

Staff Report

March 15, 2018

Los Alamos, NM 87544
www.losalamosnm.us

Agenda No.: A.

Index (Council Goals):

Presenters: James Robinson

Legislative File: 10573-18

Title

Recruitment Update for ESB Vacancies

Recommended Action Motion

N/A

Body

The ESB will receive an update on the recruitment for ESB vacancies.

Attachments

N/A



County of Los Alamos

Staff Report

March 15, 2018

Los Alamos, NM 87544
www.losalamosnm.us

Agenda No.: B.

Index (Council Goals):

Presenters: Angelica Gurule

Legislative File: 10557-18

Title

Review and Discuss the Open Forum Survey Results for Residential Collection of Yard Trimming and Recycle Roll Carts

.Recommended Action Motion

N/A

Body

The Board will review and discuss the open forum survey results for residential collection of yard trimming and recycle roll carts.

Attachments

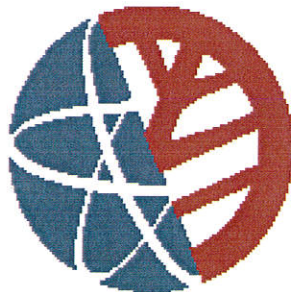
E - Open Forum Survey Results
F - Draft Alternating Schedule for 2018-2019

Yard Trimming Roll Cart Collection Schedule

Would your household be able to continue to recycle the maximum amount and have curbside pick-up reduced to every other week to accommodate for yard trimmings collection?

All Responses sorted chronologically

As of March 8, 2018, 1:26 PM



LOS ALAMOS

Open Forum is not a certified voting system or ballot box. As with any public comment process, participation in Open Forum is voluntary. The responses in this record are not necessarily representative of the whole population, nor do they reflect the opinions of any government agency or elected officials.

Yard Trimming Roll Cart Collection Schedule

Would your household be able to continue to recycle the maximum amount and have curbside pick-up reduced to every other week to accommodate for yard trimmings collection?

As of March 8, 2018, 1:26 PM, this forum had:

Attendees:	546
All Responses:	455
Hours of Public Comment:	22.8







This topic started on January 22, 2018, 11:50 AM.

Yard Trimming Roll Cart Collection Schedule

Would your household be able to continue to recycle the maximum amount and have curbside pick-up reduced to every other week to accommodate for yard trimmings collection?

Responses

Using the example schedule above, would your household be able to continue to recycle the maximum amount of plastic, aluminum, paper and cardboard and have curbside pick-up for these materials reduced to every other week to accommodate for yard trimmings collection?

		%	Count
Yes		35.6%	162
Yes, but I need a larger recycle roll cart		27.5%	125
Yes, but I need an additional recycle roll cart		13.2%	60
No, I don't have space available to have a larger and/or additional recycle roll cart		11.6%	53
No, I am not interested in the program		5.1%	23
Other: Write in answer		7.0%	32

Comments and Suggestions

Answered 150

Skipped 305

bin blue cart carts collection do don every fill full just larger like
more much need one only other out pick pickup put recycle
recycling roll s so t than trash trimmings up us use
waste week weekly weeks yard

Comments
Since our cart needs to be replaced, it would be a good time to get a larger cart. It doesn't have to be double the size; we don't fill ours completely every week, but two week's worth is too much.
We often fill up our blue bin each week. Reducing the frequency would really put us in a bind.
I usually set out my cart every couple of weeks. Sometimes, though, I get a lot of cardboard and need to set it out more often.
I would prefer to have both yard trimmings and current recycling picked up every week. Our blue bin is usually full every week and I anticipate filling the yard trimming cart weekly as well. We are on a canyon lot with lots of trees. If picking up both is not possible I would rather just have the yard trimming cart picked up every other week and keep the trash and blue recycling every week.
No. Our recycle is full every week. As for our trimmings, we would fill a cart only once every 2 or 3 months.
I can do recycling every other week. I would prefer yard waste every week (pine needles). However, I am not aware of how that affects costs.
We recycle as much as possible and fill up a large blue roll cart every week. Moving to every other week would end up causing us to store boxes of recycling outside which would then cause code violations. It would also not encourage recycling and probably end up with more going to the landfill.
This is a great idea - especially with all the new costsrions the county is giving out - this gives us a way to put yard trimming somewhere and have it picked up so that we don't have to haul away and pay dump fees. A large recycle bin will probably be needed, that or maybe every two weeks is yard trimmings? 3 our of the four weeks is recycling and the other week is yard trimmings.
Another option would be to continue weekly recycling and only pick up yard debris every other week. Personally the trash can should be smaller than the recycling bin and it would be nice if glass could be collectedas well at the same time as recycling just in the yellow bins. I have lived in many different places and either making the trash bins smaller or making pickup every other week (not ideal with our wildlife) would encourage more recycling and reduce the counties carbon footprint. I put my trash out maybe every two weeks and half the time it's not full. I put my recycling out every week and some weeks it is over flowing.
We fill up our recycle cart every single week. I don't think we' could make it every other week -- unless we had a huge cart. If that's what the schedule would change to, then I don't think I'd want the yard waste cart. We'd just continue to take our yard waste to the eco station. Could you continue to pick up the recycle cart every week, but just add in the tan cart every other week?

Yes. I already have a large recycling bin and often put it out every other week. I would be happy to have community members view my response but not if you include my name.

Please, yard trimmings weekly!!

We already have a larger recycle cart, we only put it out when at least half full. Every other week would work for us.

I would much prefer to continue recycling pickup weekly and have trash pick up every other week. If there was a food compost pickup that would reduce trash even more (and maybe keep bears out of the trash?).

Happy to have the yard trimmings picked as well! Yea!

If the county moves to an every-other-week pickup for recycling, my excess recycling will probably end up in the refuse bin. On average, I believe less material would end up in the landfill, but some recyclable material would still be going to the landfill. Also -- would the yard trimmings collection be seasonal? I would think that weekly pickup of normal recycle material could be done in the winter months.

No. Every other week not enough even with bigger recycle cart

The example schedule looks very reasonable and efficient; I would support that actual schedule. I also strongly support the proposal to include yard clippings in the recycle program.

I don't have a lot of waste, yard waste or otherwise, so I'm not really a good person to ask.

I already fullyfill up my recycle cart weekly. It's fine if the larger cart is MUCH MUCH double the size cause like I said I fill it up already fully. Ok if there's no extra charge. Otherwise recycle weekly is still needed otherwise plastics and other recyclables with be thrown in regular trash and stuffed. The extra recycle cart would mean four carts and that's just too cluttered

The recycling (blue) bin would be fine every other week. During peak growing time, the yard bin might not hold two weeks.

Most of the time, I would be ok with recycling every other week with existing cart. During peak times (Christmas shopping and various others), a larger cart would be helpful. I do not anticipate needing 2/x month yard waste pickup except during spring and fall cleanup times.

Grass clippings and other vegetation generates moisture within the rollcart. With a pickup every other week and coupled with the heat of summer, does that create a potential problem for the growth of mold?

I can't imagine filling a yard trimming cart every other week, can yard trimmings pick up be monthly?

Our recycle cart is typically full each week so I would need a larger one or additional one (as long there is no extra charge). I probably would not have enough yard waste to fill the cart every other week. Our garbage bin is generally only half or less full.

Since our cart needs to be replaced, it would be a good time to get a larger cart. It doesn't have to be double the size; we don't fill ours completely every week, but two week's worth is too much.

My grass collection bin does not need to be collected weekly but my recycle bin does. My recycle is full but my waste bin is not. Why not a monthly pickup for yard waste and not sacrifice your current level of service. After all you are saving the cost of disposing the yard waste use those dollars to provide the monthly pickup.

The ideal ratio for collections for us would be 3 weeks of recycle/1 week of yard trimmings. We will adapt to this good idea, however, even if the ratio doesn't match what we produce. Incidentally, now that the County collects so much recycling, our need to put out ordinary trash has diminished to about once every three weeks. Would it work to alternate the yard trimmings with regular trash rather than with recycling?

But around holidays like xmas maybe have weekly recycle pick up as those are heavy cardboard and recycling times.

No. This reduces recycle cart pickup, an inconvenience. (This should be an obvious choice option.) I would only be using the yard waste cart a few times a year.

Once a month would probably be sufficient for yard trimming pick up at our house. The larger recycling bin would be helpful either way.

Moving away from green landscaping to rock, patio brick, gravel and the like to cut down on water cost.

We need weekly recycle pick-up, regardless of what is picked up.

You say the yard trimmings collection would only involve organic materials, but how do you guarantee that?

I'd prefer, however, to not have two blue carts. That said, I'll go along with the best County solution for the most people.

I don't produce much trash, recycling or yard waste and could manage with one pickup of each per month...

We overfill our recycle weekly. If trying to encourage county recycling you need both weekly recycle pickup and bimonthly yard waste pickup.

Great idea!!!

How much would costs increase if we have recycling every other week, but yard trimmings each week?

I only have yard waste about six times/year, but I certainly prefer to send it to compost rather than the Rio Rancho land fill. About mixed waste recycling: Because China isn't taking our trash anymore, our mixed-waste recycling needs to be reexamined to ensure that our recycler still has a market for our waste. Better than recycling, I would recommend ordinances that limit the trash in the first place. Sadly, the US doesn't have return/reuse facilities like they do in Europe where you pay a deposit, return the plastic bottles, retrieve your deposit, and the plastic containers are sterilized and reused. But how about let's do the low-hanging-fruit thing and eliminate plastic bags by requiring merchants to put a fee (at least 10-cents) per single-use plastic shopping bags. The money is not a tax, but a charge for a commodity--the county doesn't get it--it is not a tax--the merchant is simply selling an item that the customer thinks he wants. I will bet, with the no-brainer of taking your own shopping bags, after an added dollar at the the checkout, people will remember to bring their own bags. We also need a huge education campaign about buying water in disposable plastic bottles when our Los Alamos water--20k-yr-old fossil water, is much more pure, better tasting, and more healthy than Michigan or ABQ water shipped up in plastic bottles. Here's another issue that could be easily addressed by a simple tweak, the County can work with merchants who sell drinks-with-plastic-straws to replace plastic straws with paper ones. That's a really easy fix, and although it's harder to suck a milkshake or icy through a paper straw, people can figure it out as they did before plastic straws were invented. Also, work with those same merchants to offer drinks in non-disposable cups/glasses if you are buying your coffee/slushie/milkshake/anything "for here." Starbucks and Rose Chocolatier, for example, currently offer real cups for in-store coffee. They do not, however, broadcast the option with the offer of, "for here or to go." True, Los Alamos people hate rules. We don't want anybody telling us they know better than we do. But we do like education. The County can do a real campaign to educate people and speak to their superior intelligence, and hopefully, their desire to do the right thing for the Earth and its inhabitants. Let's reduce plastic use. It's a no brainer.

During a typical week, my household produces a much larger volume of recycle material than garbage. We usually fill the blue recycle bin every week.

My recycle bin is close to full with plastic, paper, etc. almost every week. I have yard trimmings to recycle only occasionally.

We already have our recycle cart filled to the max every week so we would be against a bi-weekly pick up of the blue bin. But a larger blue bin might solve that problem.

I am disabled so an additional cart is not feasible for me. My recycle cart is almost always full on a weekly basis

I fill my recycle up just about every week and I think I already have the largest container and don't really have a good place for a second one. I do want something for yard trimmings as we produce a lot and typically it just ends up in the garbage because I can't wait for the quarterly pickup or get a truck to take it out.

From the question it is not clear if the Quarterly Brush collect is being replaced by yet another roll cart dedicated to yard trimmings. This doesn't seem cost effective.

If you really want to reduce yard waste you need to start this in March. Real gardeners start cleaning up the gardens in the spring. Pruning and garden clippings such as roses and raspberry prunings, last year stems and such are removed in the spring and fall both. You are missing the boat if you do not move faster on this. I have been talking to your people about this for a number of years and it has been very slow coming.

Please don't reduce our recycling footprint in the county -- in our particular case we'll have no choice but to increase the amount of trash we send to the eco station as we'll have no where else for recyclable materials to go. Our recycle is full every week because we carefully work to reduce the trash we send to the landfill...

I liked having a cart for the yard trimmings in my daughter's home in San Antonio, Texas. However, I can see how having three carts would be difficult for some households.

Prefer recycle every week, and yard one a month (say, the first week of the month). If you cannot do both yard & recycle same week, suggest instead yard the first week, and recycle the rest of the month. Might use the yard couple times/year, but have had recycle every week.

I have no interest in or room for the yard trimmings bin. There is no way a single roll cart can replace bulk collection. This is a bad idea that will not work for me. Cutting recycle collection to every other week may cause me to abandon using that program as well. Given such a cutback to service I would expect my utility bill to be reduced.

We generate more recycle than trash.

We fill our blue recycle bin each week so we would either need an additional roll cart or to continue the once a week schedule. We live in an area that has minimal yard clippings or waste and would most likely not use the tan roll cart.

Great idea, we would use the yard trimmings roll cart.

I usually only do every other week for my curb pick up as it is. If we end up with large amounts of cardboard, we usually flatten it and load into the truck to drop off in one of the local cardboard dumpsters. I really appreciate the yard trimmings collection initiative! Its a great idea. I always hated throwing trimmings from pruning away as I do get mulch and compost.

I was wondering if it would be a bad idea to also add my weeds? I assume the trimmings will be added to the compost and mulch...would weeds pulled make the compost have weed seeds or something?

Yes, the yard trimmings roll cart plan is great. I still need a full size recycle cart most weeks as well, however (the cardboard). I'd rather reduce the size or possibly frequency of garbage pickup, or I'd be willing to pay extra for the yard trimmings roll cart.

We don't regularly have yard trimmings that go to the dump. Most stays in the yard to go back into the environment at home.

We put the blue bin out now every 2-3 weeks, so no problem.

What about "Large item" pickups? Many people (like us), do not have a vehicle to get rid of large things like washing machines, furniture, etc.

I don't mind if you share my name and response, but I don't want to "register" at yet another site. Sorry.

Should be fine save that remembering which week is currently in effect might occasionally challenge some of us. I would expect some frictional loss because of that. Bear in mind that most areas could get by with yard trimming removal monthly due to smallish yards, while others could probably use weekly. Not sure one size fits all.

I assume that this program will cause the end of the quarterly pickup of branches and tree trimmings. I don't dispose of 'yard trimmings', but compost them myself. I have many pinon and juniper trees that require regular trimming which results in long branches that wouldn't fit into a roll cart. I use a hand saw to trim the trees, and would need to use the hand saw again to trim the branches to shorter lengths to fit in the cart. I don't find this extra work to be useful or worth the effort. I live in La Senda, where, like Pajarito Acres, there would probably be more interest in continuing the quarterly pickup, without the extra roll cart for 'yard waste'.

The recycle roll cart is huge for two people, and it takes us a month or more to fill it up (we don't generate much trash either), so every other week would be no problem except for remembering which week is which. We have far more yard trimmings than we do trash or recycling. I'm sure lots of families are the opposite. Might it make sense to have carts of different sizes, or even to offer different schedules, for families with different needs?

Not sure how we would recycle large branches in a roll cart, tho.

Yes, but I much prefer weekly yard trimmings collection. I can still manage with my current small recycling bin, every other week. Thank you, Barranca Mesa.

I trim fruit trees in January and now have about 3 or more cart loads which I may take to the eco station. There would probably be 3 cart loads of ponderosa pine needles and leaves in the fall. I don't really need yard trimmings to be picked up most of the year.

LA can do better than a survey via a website that wants to post your name with your response and then keeps the anonymous results hidden.

My family will need good communications/info regarding the schedule. We are afraid we will put out the incorrect recycle/yard trimming cart because we have forgotten which week is for which cart. We are excited about the opportunity to use a yard trimming cart. It will be better for us than quarterly brush pickup!

we do every other week now anyway and still use the paper bags for yard trimmings...not a problem

Have no idea! Sometimes I fill my recycle cart, other times not. Not sure how much yard waste I'll generate.

Yikes, cutting back on the occasions for recycle collection seems like a major loss :(I'd rather have a bonus collection just once a month for trimmings than to lose out on weekly recycling pick-up. Usually my trash can is only half full each week but my recycling cart is at or near capacity!

We have the larger recycle roll cart and we fill it every week. Our cart would be overflowing if pick-up went to every other week. I like the idea of a regular yard trimming pick up, but I have no room to store an additional roll cart.

Although my I rarely fill my regular trash, my recycle cart is usually 2/3 to full by the end of the week. I would hate to see the reduction in recycle services as it may result in more recyclables going into the regular trash (if a household's blue cart becomes full and pickup is more than a week away). I do appreciate the addition of the yard waste cart.

I already have the larger recycle roll cart and don't have space for a second one.

Recycling is typically has more volume than the trash and needs to be taken weekly. Trash taken every other week would be better.

Last summer we already had trouble with bears. My 1949 Group 11 home has no garage to store the trash in for 2 weeks, so I am NOT interested in it cooking outside and attracting bears and raccoons for two weeks.

We already have the largest recycling roll cart, and it's full to the brim every week. I think having 2 full recycling bins by the end of 2 weeks would be too inviting to the bears. I'd rather haul my own yard waste to the eco station.

Bear proof roll carts would be a much better improvement in my opinion.

I have two trash bins and a recycle bin. I don't have room for anything else. I think we should go back to twice a week trash pickup, with one day for recycling and another for brush pickup.

This is a great thing. I will enjoy this very much so and save me time!!

If it ain't broke, don't fix it -- and it ain't broke.
If you want to ADD a weekly or bi-weekly yard trimmings collection, OK. I'd even be willing to pay a SMALL fee for the service.

We must have recycle each week... otherwise my household and I am sure many more will just add it to th trash can!!!
If anything I could do trash every other week but NOT recycle!!

We only have 2 recycle roll carts per the 4 households that live in our quad on Walnut Street.

If I need to discard more recyclables. . . I will haul them to the Sullivan Field recycle drop-off. Thanks for planning this new option for lawn and yard organic discarding.

Why is this waste of time and money being considered. Eliminate the sustainability board and their goofy ideas.

Actually I've been thinking about this. I might be the minority but we produce less trash than recycling. I think I even have the big recycle bin. I'd almost rather trash pickup be alternated vs recycling.

Also, when I produce yard waste, I produce a lot more than one bin. I think there would be many months I'd never fill it and other weeks I'd need 4 brush roll carts. I have a large yard. What do you suggest for people like me? Or when we have huge branches but no truck. I will miss the bulk pickup even though I'm really excited about the brush roll cart program.

Address is wrong. Located on Arizona Ave

Yes, but for fire safety, please collect yard trimmings weekly.

I am eagerly awaiting the start of yard trimmings collection but please keep the recycle collection weekly!

I already have the largest blue roll cart available for recycling, and nearly every week it is FULL. I am not comfortable holding a full blue cart for a week. I have heard reports of strangers digging through our blue carts. Maybe they are stealing the aluminum. Maybe they are looking to engage in identity theft. Either way, let's not attract these scavengers more than we do already.

Also, I expect I will need the largest brown roll cart available for yard trimmings. I may not put the brown cart on the curb every week but I know I will have a large volume of yard trimmings. I am serious about maintaining defensible space around my home, and I have been paying a company to haul away huge piles of dead limbs, leaves, pine cones, wormy fruit, etc. So I really want weekly collection of blue cart recycling AND brown cart yard trimmings.

Also, I understand the yard trimmings collection will be SEASONAL. That is a good reason not to alternate it with recycling.

If there is a need to limit yard trimmings collection to every other week, how about alternating it with GLASS collection? Currently I use a large trashcan for glass. I take it to Sullivan Field or the Eco Station every 3 weeks or so, just before it gets too heavy to lift. I would be delighted to put out a small roll cart for glass recycling every 2 weeks.

I'm a single person household and usually don't put out my recycling until it's full, which is every other week or less

We used to get this for free, you guys keep getting more money, but it is not getting to the people who do the pickups, and now you want to reduce the pickups for normal trash? We would have to start leaving it somewhere else, and we are only 3 people. We need to have the quarterly program continued. I have had to call in over and over because your staff won't pick up, and now they won't be doing it at all?

just may be had to keep track of what week it is.....

Can you get any more ridiculous? This is another asinine waste of money and energy the county is becoming famous for. CURRENT COUNCIL ARE MORONS!

only issue will be remembering what week it is - Currently, I only put out my recycling cart about 3 wks out of 4.

During the spring cleanup time, more pickups of the trimmings cart would be great.

Stop catering to every little inconvenience in this town and put the money to actual use!

Our recycle bin is full every week, so we would need a much larger recycle cart. Having two recycle carts is an option, but seems like wasted plastic.

Current recycle roll carts are too small to accommodate weekly collection, a larger recycle roll cart would be preferred even if weekly collection. As I have a xeroscaped yard I have little yard waste, most of which would be large tree branches that I would need to take to the ecostation, therefore biweekly pick up of yard debris would be more than adequate.

I need weekly recycling. I have one bag of trash each week but a completely full (large) recycling bin so no I do not want to have more and more bins on hand really.

I believe we could. I could try condensing how we put our recycled materials in a little better but I would definitely need a bigger cart or another one.

Personally, I don't think I have enough organic yard matter to make a difference in this. I'd prefer just to keep my recycling every week but that's just my household.

No, because even with a larger recycle roll cart I will still have too much recycle.

All roll carts (trash, recycle, trimmings) should come with a latch on the lid. A simple latch would keep the lid from being blown open and the cart from tipping over, and a better fastener could be added by the user if needed to keep out animals.

Having a yard cart does not change how often I need to recycle. I will still want to have my recycle dumped every week. I will not use the yard bin very often. I think it's ridiculous we will still be charged the same rates as if we were having our quarterly pick up and now we just have a trimmings bin. Which will rarely be used.

I'd welcome fewer pickups and smaller containers if it would be a reduction in my cost of recycling.

For our family this rotation would be fine.

We don't have space to keep all these carts!!! Brush recycle is only really needed for half the year, the other half the cart will sit unused and our recycle cart will be filled to overflow waiting for its turn to be put out. Garbage pick up, recycling, brush pick up, NOV's when it's not all perfect...it's becoming a full-time job and we're just about ready to start putting it all in the green cart and forgetting about it. Our neighbors are already throwing all their trimmings over the fence onto County property....

I could really use weekly yard trimmings pickup.
My current recycling bin size is fine for twice a month pickup.

Going to every other week recycling pickup would not be an issue for us. I applaud the County for looking at ways to provide important services efficiently and cost-effectively!

In winter, when I have no yard trimmings, I would like weekly pick-up of the recyclables.

Yes, but there may be some weeks when my existing recycle cart would not hold two weeks of recycling material.

I believe I would prefer to have a separate cart for yard waste so as not to mix up recycling with yard waste. It would take some energy on my part to remember which kind of recycling to put out each week, but I could do it.

I do a lot of recycling here at home, but I need a place for rose and iris trimmings which can carry viruses and must not be put in the compost pile.

I do hope the output from this operation is true high quality compost and is not contaminated with sewerage sludge which I cannot use in my yard.

We currently recycle every other week, so alternating should work for us.

Would like the trimming collection to begin in April each year.

This will not help people in Pajarito acres where large branches and dead trees need to be cleared periodically. Recycle roll carts can not accommodate the size and volume and can't replace the actual brush pick up program. This can impact the fire safety in our area.

It takes us one month or more to fill up the recycling bin. We don't put the recycling bin out for collection every week, we wait till it's full. The above schedule will work great for us.

The best solution would be to continue weekly pick up. Why is it necessary to reduce the recycle pickup in order to add the yard waste pickup?

We fill our recycle much faster than our garbage. Picking up recycle every week and alternating weekly trash and yard debris would be perfect for us.

At most I would use this yard trimming cart once a month, maybe once every two months. I fill my current recycle cart full weekly.

Either a larger roll cart or a second cart--we're full now, and our recycling was picked up on Friday (this is a Sunday I'm completing the survey), so I can't imagine going another week!

We already have the largest recycle roll cart and we fill it every week. It's ridiculous to expect households to have four different roll carts (trash, yard trimmings, 2x recycle). We did sign up for the yard trimmings program.

Hello,

Our home recycle bin is filled - meaning to the brim - every week. If you change the weekly pickup, I will be forced to throw recycle into the trash when needed.

thank you.

That's what we do now with our recycling cart.

If a household does or doesn't do the yard trimmings collections, will the landfill still be available for households to make the 12 free visits per year? We'd like county to keep the free visits. We don't put our yard waste in our green rollcart like some people do.

I am quite excited to see an option to recycle yard trimmings, thank you! This will help me tremendously. I am also happy to accommodate the proposed schedule as my household does not go through enough recycling to warrant an every week pick up, and we recycle everything we can!

Can you do something about animal waste, horses in particular too?

I compost almost all of my yard waste. Occasionally I throw bags of dead weeds into my trash, but I would not have use for a trimmings cart.

I would need a separate roll cart, maybe one that is more durable since I'll be dragging it around the yard.

I put out my recycle roll cart almost every week, so if collection were only half as frequent, I would need either a much larger or a second recycle roll cart.

Maxing out large blue weekly. Don't want to deal with a third. Use my own flatbed when needed anyway.

I recycle more than I put in trash. I would prefer to rotate trash and yard waste.

With a family of 4, I already fill the largest recycling cart weekly!

We often fill up, or nearly so, the recycle cart on a weekly basis. With a larger recycle cart, I think we would be okay.

How full my roll cart is varies from week to week. Most weeks this would be fine but there are times that it gets full in just one week. I also like to get it emptied promptly during bear season to avoid it being tipped. How would collection every other week impact bear activity?

We often fill up, or nearly so, the recycle cart on a weekly basis. With a larger recycle cart, I think we would be okay.

I like this idea. The proposed schedule works for our family.

Most of my recycling is from cardboard boxes. If I changed my habits a bit I could take those to Sullivan field sometimes, but the cardboard recycling at Sullivan field has often been full.

I think we already have the largest roll cart and we usually set it out every week. However it's not always full and it would probably only occasionally be an issue where it fills up in between pickups.

Yes, but I need weekly yard waste pickup.

Do people really need yard waste picked up every other week? I don't like the alternating schedule cause if you miss one then you have to wait another 2 weeks...plus it get confusing since months aren't even. How about yard pick up once a month and always on the first week of the month (or second), or something regular so you remember it, but most of the time it is recycling. Our family recycles more than trash, so would need a bigger cart, but also like that it gets picked up frequently. Thank you!

pick up the garbage every 2 weeks

We currently only put out our recycling bin every other week.

Maybe? We would need a larger roll cart for recycling at a minimum. No room or desire for an additional roll cart. I don't know that I'd need yard trimmings picked up that frequently though. It seems excessive.

Either a larger cart or a second one would make this a possibility

Thank you for asking us.

Great idea. I like it.

Probably. But, when the recycle cart becomes full any subsequent recycle material will go to the land fill as we have no way to store these materials. This will likely not happen often, perhaps 10-20% of the time.

The schedule is confusing if you are on travel. Also, we generally would have a full recycling as well as garbage and, hopefully, yard trimmings every week. We should not need to reduce our service schedule to accomodate another type of pickup. Maybe the same crew come on same day for yard trimmings but later?

I welcome a yard waste pick up. But our recycle bin is full most weeks. And I don't want to have 4 bins (1 trash, 2 recycle, and 1 yard waste).

There are times when I fill the recycle bin full every week for a stretch of a month or so. So, having an extra recycle bin would help during those times. Sometimes, I would be just fine with one cart for every 2 weeks.

This sounds like a great idea!

We already have the largest sized recycling roll cart. We routinely fill the cart even with weekly pick ups. We are not going to provide the space for a second recycling roll cart.

Yard trimmings are seasonal. That cart wouldn't we used during the winter months! (that's a good 6 months). We fill out recycle cart weekly. We don't have room for a bigger recycle cart. We are pressed for space as it is.
This is not a good solution for collection.

DRAFT

2018

Recycling and Yard Trimming Roll Cart Collection Schedule

July						
Su	Mo	Tu	We	Th	Fr	Sa
1	2	3	4	5	6	7
8	9	10	11	12	13	14
15	16	17	18	19	20	21
22	23	24	25	26	27	28
29	30	31				

October						
Su	Mo	Tu	We	Th	Fr	Sa
	1	2	3	4	5	6
7	8	9	10	11	12	13
14	15	16	17	18	19	20
21	22	23	24	25	26	27
28	29	30	31			

August						
Su	Mo	Tu	We	Th	Fr	Sa
			1	2	3	4
5	6	7	8	9	10	11
12	13	14	15	16	17	18
19	20	21	22	23	24	25
26	27	28	29	30	31	

November						
Su	Mo	Tu	We	Th	Fr	Sa
				1	2	3
4	5	6	7	8	9	10
11	12	13	14	15	16	17
18	19	20	21	22	23	24
25	26	27	28	29	30	

September						
Su	Mo	Tu	We	Th	Fr	Sa
						1
2	3	4	5	6	7	8
9	10	11	12	13	14	15
16	17	18	19	20	21	22
23	24	25	26	27	28	29
30						

December						
Su	Mo	Tu	We	Th	Fr	Sa
						1
2	3	4	5	6	7	8
9	10	11	12	13	14	15
16	17	18	19	20	21	22
23	24	25	26	27	28	29
30	31					

Key:  Holiday*  Yard Trimmings  Recycle
 *Place out on Wednesday None in Dec, Jan, Feb

Note: Trash will be collected weekly.

The Yard Trimming roll cart is for organic yard trimmings only, which includes branches (not to exceed 36" length and 4" diameter), flowers, grass clippings, leaves, pine needles and pine cones.

Non-acceptable items include: trash, plastic bags, animal waste, treated wood and lumber, railroad ties, construction debris, tree stumps, ash, concrete, dirt and rocks.

2018 Holiday Schedule

No Recycling, Yard Trimmings or Trash Collection on County Observed

There will be no residential or commercial collection service provided on the days denoted below. If the observed date falls on your normal trash day please place your materials out on the Wednesday* of that same week (date denoted in table).

Holiday	County Observed Date	Date to place materials out if affected
Independence Day	Wednesday, July 4, 2018	Thursday, July 5, 2018
Labor Day	Monday, September 3, 2018	Wednesday, September 5, 2018
Columbus Day	Monday, October 8, 2018	Wednesday, October 10, 2018
Veteran's Day	Monday, November 12, 2018	Wednesday, November 14, 2018
Thanksgiving	Thursday, November 22, 2018	Wednesday, November 21, 2018
Day after Thanksgiving	Friday, November 23, 2018	Wednesday, November 21, 2018
Christmas Day	Tuesday, December 25, 2018	Wednesday, December 26, 2018

DRAFT

2019

Recycling and Yard Trimming Roll Cart Collection Schedule

January						
Su	Mo	Tu	We	Th	Fr	Sa
		1	2	3	4	5
6	7	8	9	10	11	12
13	14	15	16	17	18	19
20	21	22	23	24	25	26
27	28	29	30	31		

May						
Su	Mo	Tu	We	Th	Fr	Sa
			1	2	3	4
5	6	7	8	9	10	11
12	13	14	15	16	17	18
19	20	21	22	23	24	25
26	27	28	29	30	31	

September						
Su	Mo	Tu	We	Th	Fr	Sa
1	2	3	4	5	6	7
8	9	10	11	12	13	14
15	16	17	18	19	20	21
22	23	24	25	26	27	28
29	30					

February						
Su	Mo	Tu	We	Th	Fr	Sa
					1	2
3	4	5	6	7	8	9
10	11	12	13	14	15	16
17	18	19	20	21	22	23
24	25	26	27	28		

June						
Su	Mo	Tu	We	Th	Fr	Sa
						1
2	3	4	5	6	7	8
9	10	11	12	13	14	15
16	17	18	19	20	21	22
23	24	25	26	27	28	29
30						

October						
Su	Mo	Tu	We	Th	Fr	Sa
		1	2	3	4	5
6	7	8	9	10	11	12
13	14	15	16	17	18	19
20	21	22	23	24	25	26
27	28	29	30	31		

March						
Su	Mo	Tu	We	Th	Fr	Sa
					1	2
3	4	5	6	7	8	9
10	11	12	13	14	15	16
17	18	19	20	21	22	23
24	25	26	27	28	29	30
31						

July						
Su	Mo	Tu	We	Th	Fr	Sa
	1	2	3	4	5	6
7	8	9	10	11	12	13
14	15	16	17	18	19	20
21	22	23	24	25	26	27
28	29	30	31			

November						
Su	Mo	Tu	We	Th	Fr	Sa
					1	2
3	4	5	6	7	8	9
10	11	12	13	14	15	16
17	18	19	20	21	22	23
24	25	26	27	28	29	30


April						
Su	Mo	Tu	We	Th	Fr	Sa
	1	2	3	4	5	6
7	8	9	10	11	12	13
14	15	16	17	18	19	20
21	22	23	24	25	26	27
28	29	30				

August						
Su	Mo	Tu	We	Th	Fr	Sa
				1	2	3
4	5	6	7	8	9	10
11	12	13	14	15	16	17
18	19	20	21	22	23	24
25	26	27	28	29	30	31


December						
Su	Mo	Tu	We	Th	Fr	Sa
1	2	3	4	5	6	7
8	9	10	11	12	13	14
15	16	17	18	19	20	21
22	23	24	25	26	27	28
29	30	31				

Key:  Holiday*

*Place out on Wednesday

 Yard Trimmings

 Recycle

 Holiday Trees

None in Dec, Jan, Feb

Note: Trash will be collected weekly.

LOS ALAMOS

Environmental Services

(505) 662-8163

solidwaste@lacnm.us

2019 Holiday Schedule

No Recycling, Yard Trimmings or Trash Collection on County Observed

There will be no residential or commercial collection service provided on the days denoted below. If the observed date falls on your normal trash day please place your materials out on the Wednesday* of that same week (date denoted in table).

Holiday	County Observed Date	Date to place materials out if affected
New Year's Day	Tuesday, January 1, 2019	Wednesday, January 2, 2019
Martin Luther King, Jr. Day	Monday, January 21 2019	Wednesday, January 23, 2019
President's Day	Monday, February 19, 2019	Wednesday, February 20, 2019
Memorial Day	Monday, May 27, 2019	Wednesday, May 29, 2019
Independence Day	Thursday, July 4, 2019	Wednesday, July 3, 2019
Labor Day	Monday, September 2, 2019	Wednesday, September 4, 2019
Columbus Day	Monday, October 7, 2019	Wednesday, October 9, 2019
Veteran's Day	Monday, November 11, 2019	Wednesday, November 13, 2019
Thanksgiving	Thursday, November 28, 2019	Wednesday, November 27, 2019
Day after Thanksgiving	Friday, November 29, 2019	Wednesday, November 27, 2019
Christmas Day	Wednesday, December 25, 2019	No Change



County of Los Alamos

Staff Report

March 15, 2018

Los Alamos, NM 87544
www.losalamosnm.us

Agenda No.: C.

Index (Council Goals):

Presenters: Angelica Gurule

Legislative File: 10556-18

Title

Yard Trimming Roll Cart Implementation Plan

.Recommended Action

N/A

Body

The ESB will review and discuss the yard trimming roll cart implementation plan, which includes outreach and education, distribution, and collection. The program go live date is scheduled for July 2018.

Attachments

D - Yard Trimming Roll Cart Implementation Plan

Yard Trimming Implementation Plan

Goal 1: In outreach, be sure residents understand the benefits of the yard trimming collection program (cost savings, environmental benefits) to inspire them to do it, and do it right!

Goal 2: Achieve a 30% Participation Rate for Year 1 or ~2,055 households

Education/Awareness	Status
Announce program on Utility Bill insert	Done in January 2018
Place a sticker on the lid of each bin with "How To" instructions	Done - Each lid has been hot stamped to describe acceptable and unacceptable items.
Be sure the LAC web page has all "How to" info	
Develop FAQ and add to Yard Trimming webpage	
Announce through all "media" outlets: Daily Post, Monitor, Facebook, Twitter, KRSN, Environmental Services Website	We have developed an outreach schedule for all division events, this is included in it and is ongoing.
Reminder of Program/Collection Schedule as Bill Stuffer	
Flyers at events (Rodeo, etc.)	
Big Poster at Events (Science Fest, etc)	
Flyers distributed around town by LAVA volunteers (Senior Center)	Done - January 2018; Will be distributed in June 2018
Send info and flyers to civic and church groups and ask them to get the word out: PEEC, churches, LARSO, Stables Assoc, HOAs, Garden Club, etc.	
Decorate a brush bin and have a "Brush Bin Game" (like the Recycling Game) at events	
Share audio jingle about how to use the yard trimming cart - FB and website, KRSN	
Have cute Chamisa School or Eco Club kids (or Envir. Services staff!) make a video to show at Real Deal (this could be a class or Scout project). Possible video or art contest	
Banner for Eco Station Fence facing LANL	Done
Discuss at Earth Day, Clean Up LA Day, Recycle Fashion Show, Science Fest, County Rodeo, Farmer's Market, Chamber Fest	
Develop policy for number of carts to be given for each household	
Info magnets	
Stick info flyers on trash rollcarts	

Distribution	
Each roll cart should have a calendar (collection dates) and list of how to use it and how to request a larger recycle roll cart, how to place it next to another cart. Clean - No Mud	
Kick Off - Distribution at Eco Station on Clean Up Los Alamos Day	
Have a "Yard Trimming Collection Kick-off Day" with free bins, food, games, education	
Give away starting April/Deliver starting May	
Distribute at Sullivan Field and Overlook on a few Saturdays. Maybe also Smiths, Coop, Metzgers, libraries, pools, schools, parks	
Have civic/church groups help with distribution: Garden Club, Scout troops, Eco Club, Chamisa school, YMCA, HOAs, Church groups, PEEC	
Give prize for every 50th or 100th bin picked up at Eco Station	
Enter all picker-uppers in a raffle	
Give away some related item with each bin picked up (one of those collapsible yard waste bags?)	
Give away coupons to local businesses with each bin picked up (Metzgers, Coop, beer coop, Smiths, restaurants, etc)	
Have a web page with form for those who need bin delivered (maybe charge \$5 to encourage folks to pick up bins themselves). Have a set of instructions they have to read and sign off on before registering for delivery.	
Implementation	
Order collection truck	Truck ordered - installing transmission retarder
Hire equipment operator	Start recruitment process in May 2018
Identify Material Code for PC Scales - YardTrimmingsResidentialRoute	Done
Require online registration to request yard trimming roll carts	Registration in progress ~830 registered to date.
Host online open forum survey to determine collection schedule	Survey closes March 8th. Results to be discussed March 15 ESB meeting. Approved schedule April 19th meeting.
Collection	
Start Route Collection	July 1, 2018
Send out email reminder for recycle/yard trimming collection dates and calendar, bill stuffer, website, FB, media.	



County of Los Alamos

Staff Report

March 15, 2018

Los Alamos, NM 87544
www.losalamosnm.us

Agenda No.: D.

Index (Council Goals):

Presenters: Don Machen

Legislative File: 10552-18

Title

How to Beat Residential Recycling Contamination - Presentation Overview

...Suggested Motion

N/A

Body

Don Machen will provide the ESB an overview of the webinar: How to Beat Residential Recycling Contamination, presented by the Recycling Partnership and Massachusetts Department of Environmental Protection. A recording of the webinar is available on YouTube at <https://youtu.be/F37Wqm6ll74>.

Attachments

- B - How to Beat Residential Recycling Contamination PowerPoint Presentation
- C - Answers to questions asked not answered on March 22 Residential Recycling webinar



How to Beat Residential Recycling Contamination



NERC/NEWMOA Webinar
The Recycling Partnership
February 22, 2018



RECYCLINGPARTNERSHIP.ORG

Nonprofit, working hand-in-hand with communities and companies across the country to improve recycling.



RECYCLINGPARTNERSHIP.ORG

OUR FUNDERS:



RECYCLINGPARTNERSHIP.ORG

Open Source Tools Online

Field-ready tools for you

Find them on our website:
www.RecyclingPartnership.org



RECYCLINGPARTNERSHIP.ORG

We Deliver Measurable Results



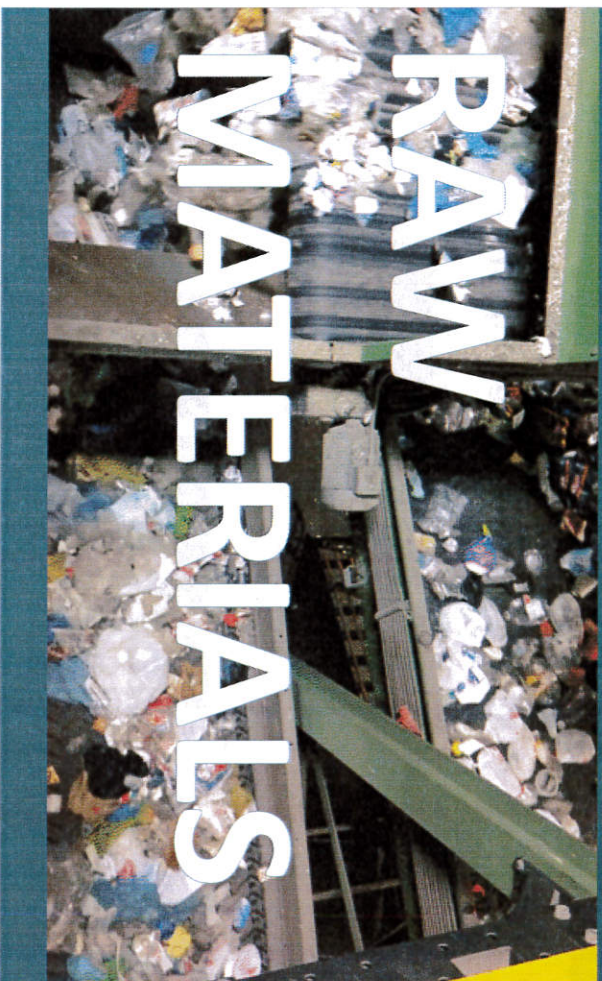
THROUGH 2017, OUR COMPLETED IMPACTS TOTAL:

580	\$27+MM	7:1	400+k	29MM	115MMlbs	164
COMMUNITY PARTNERS	TOTAL INVESTMENT	LEVERAGE OF SPEND	RECYCLING CARTS	HOUSEHOLDS IMPACTED	RECYCLABLES DIVERTED	GHG AVOIDANCE (KMT CO ₂ E)

What Are Recyclables Anyway?

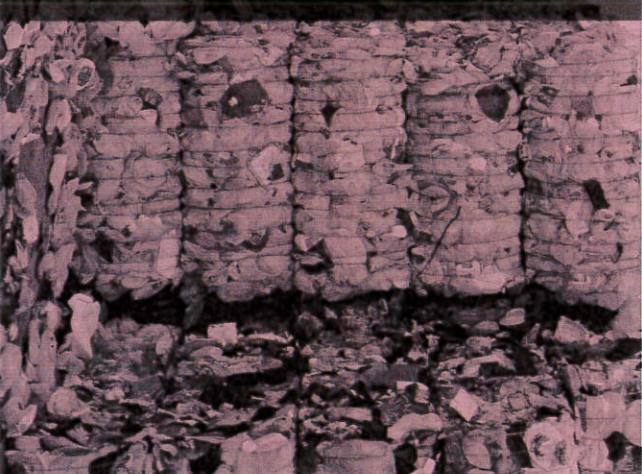


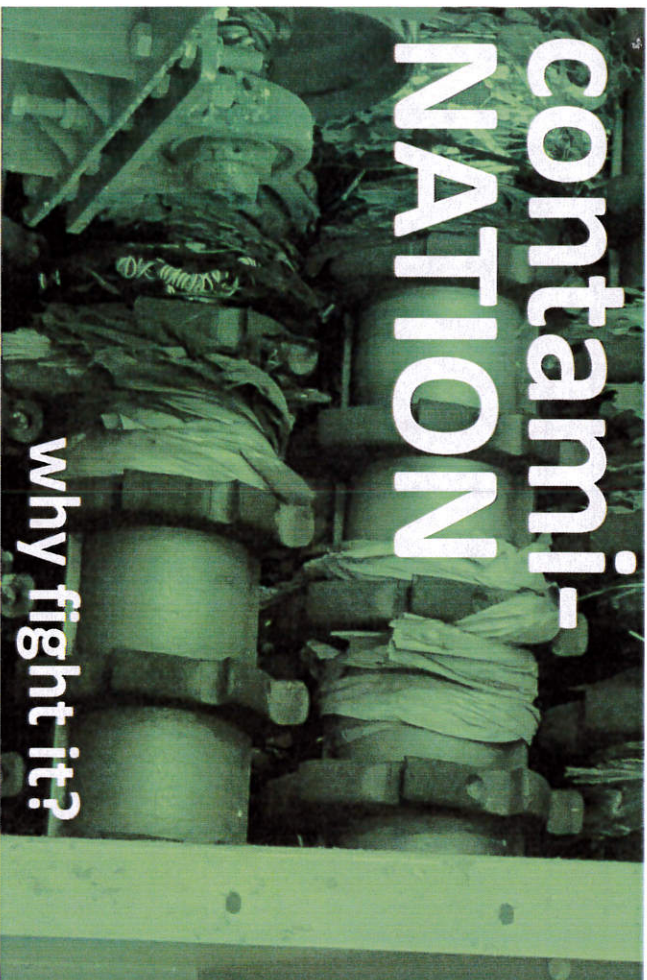
RAW MATERIALS



MANUFACTURING
FEEDSTOCK that competes with OTHER raw materials

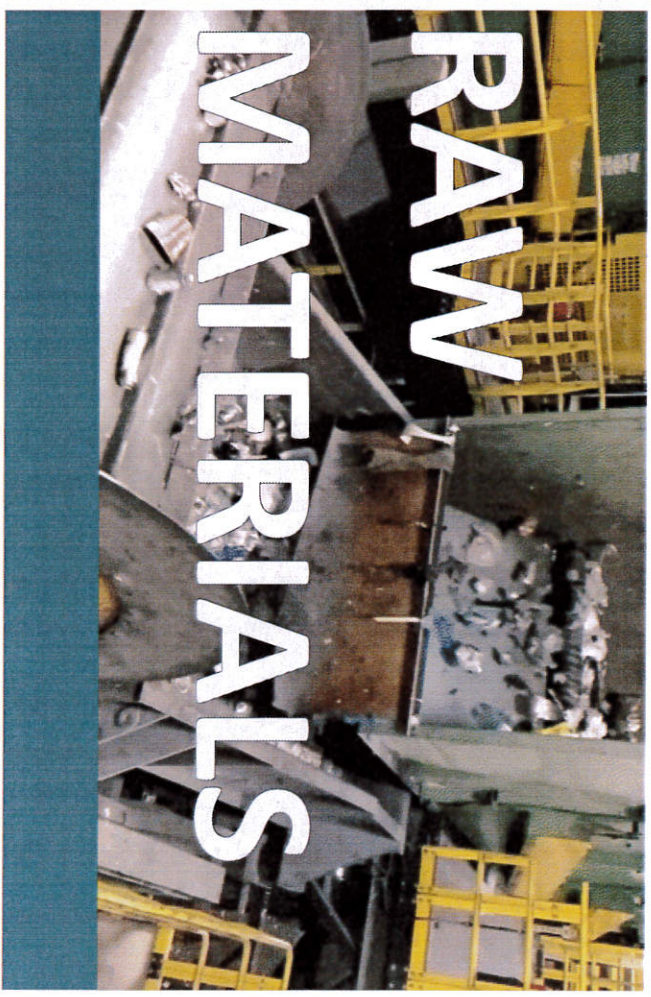
Only when RECYCLED CONTENT REPLACES virgin content, we enjoy the ECONOMIC and ENVIRONMENTAL benefits RECYCLING promises and delivers.





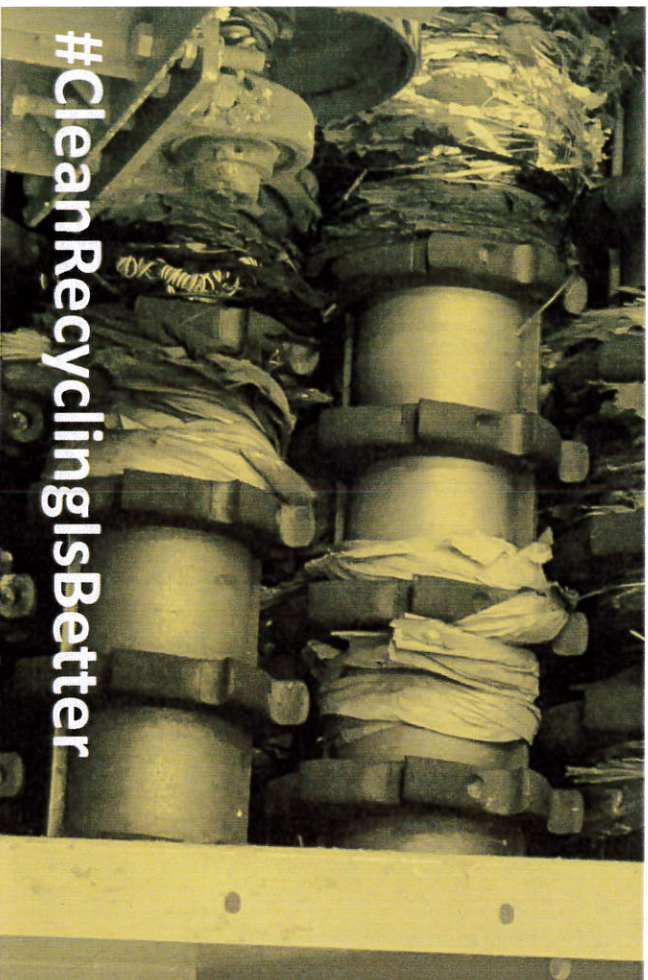
contami- NATION why fight it?

THE RECYCLING
PARTNERSHIP
RECYCLINGPARTNERSHIP.ORG



RAW MATERIALS

THE RECYCLING
PARTNERSHIP
RECYCLINGPARTNERSHIP.ORG



#CleanRecyclingIsBetter

THE RECYCLING
PARTNERSHIP
RECYCLINGPARTNERSHIP.ORG

Recycling Corner: A Dear John Letter from Xi Jinping

China's War on Foreign Garbage

Imported recycling has been a boon for China. So why ban it?

TOP STORY

Recycling hits a snag

**What comes next after China's
scrap ban surprise?**

THE RECYCLING
PARTNERSHIP
RECYCLINGPARTNERSHIP.ORG

National Sword & China's Scrap Ban

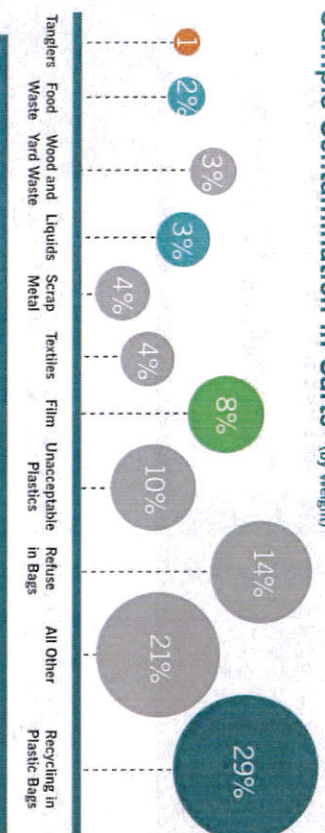
- Scrap ban enacted Jan. 1, 2018
- 0.5% Contamination threshold Mar. 1, 2018
- Challenging for MRFs



#CleanRecyclingIsBetter

Weight Alone Doesn't Tell the Story

Sample Contamination in Carts (by Weight)



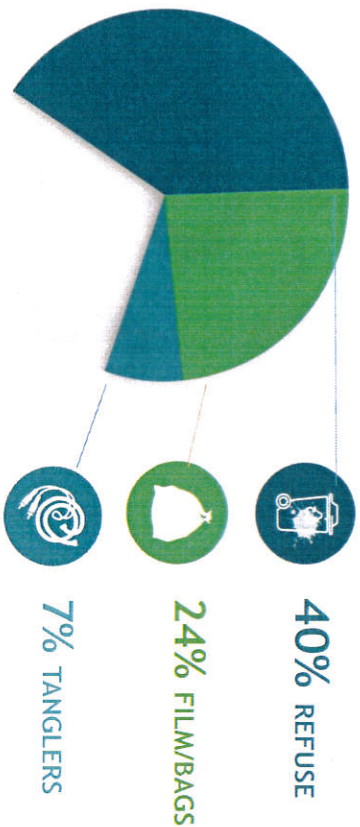
VS Top 5

- Contaminants according to 2016 The Recycling Partnership MRF survey**
1. **Tangles** (hoses, cords, clothes)
 2. **Film** (plastic wrap or bags)
 3. **Bagged Things** (refuse or recycling)
 4. **Hazardous Material** (propane tanks, needles/sharps)
 5. **Yuck** (food, liquids, diapers, etc.)

	Labor (in hours)	Facility Down Time (in hours)	Disposal (in pounds)	Equipment replacement/repair/wear (in dollars)	Staff Injury (in hours)	Lost Value of Other Recyclables (in dollars)
Film/bags						
Tangles						
Needles						
Refuse						
Propane Tanks						
Glass, (ONLY if not on your ACCEPTABLE list)						
Textiles						
Scrap Metal						
Food						
Hazardous Materials(diapers, batteries, medical waste, etc.)						
Totals						

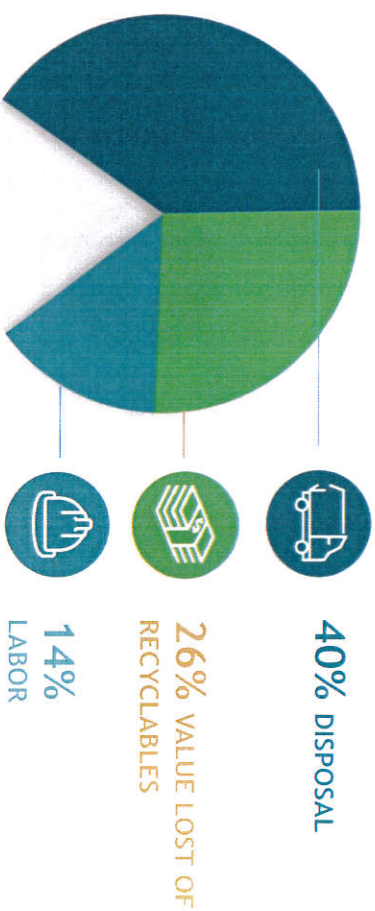
What makes up the greatest costs of a contaminated recycling stream?

TOP THREE CONTAMINANTS = 71%

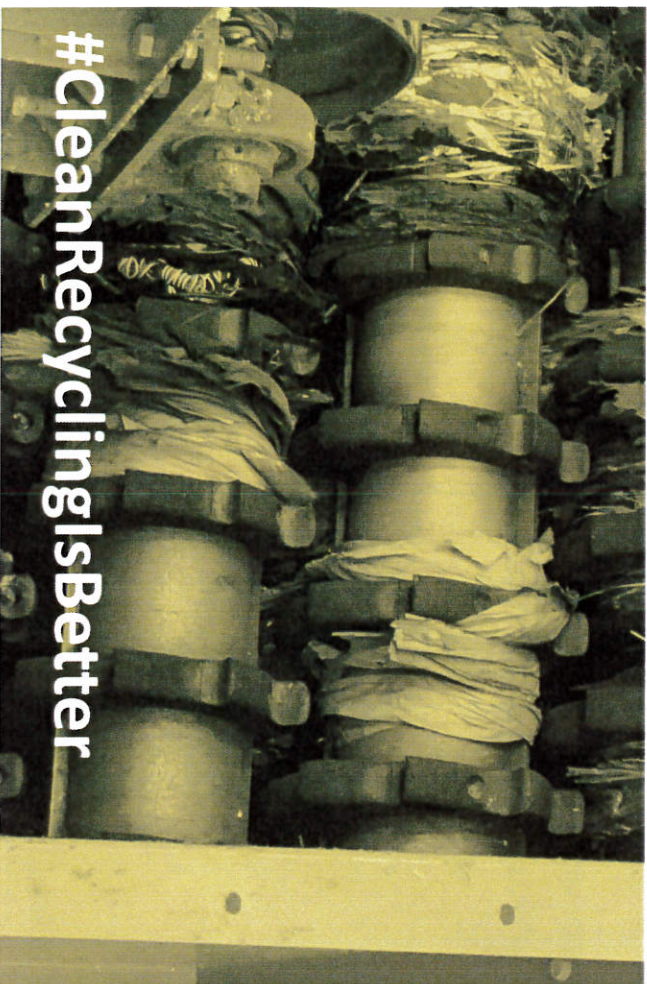


What makes up the greatest costs of a contaminated recycling stream?

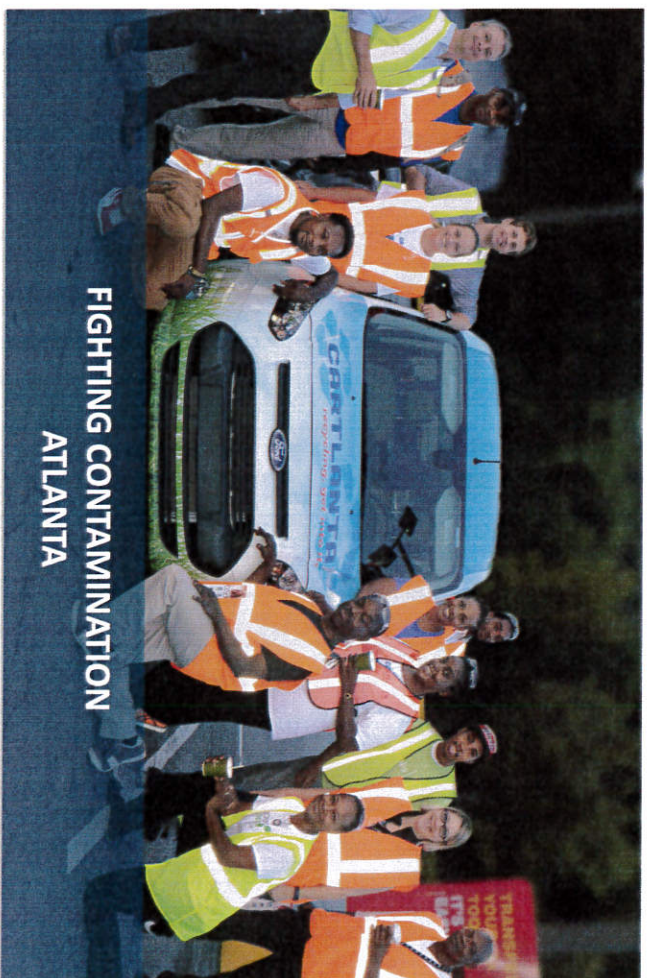
TOP THREE EXPENSES = 80% OF ALL COSTS



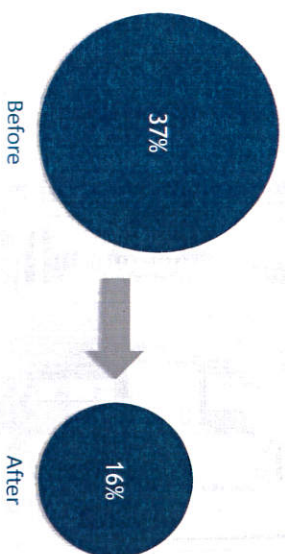
#CleanRecyclingIsBetter



FIGHTING CONTAMINATION ATLANTA

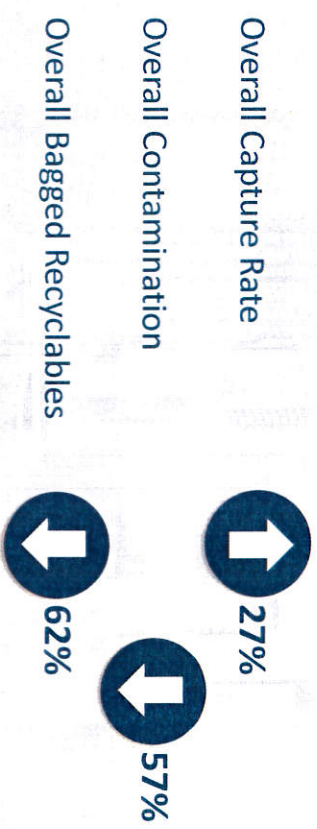


ATLANTA CONTAMINATION

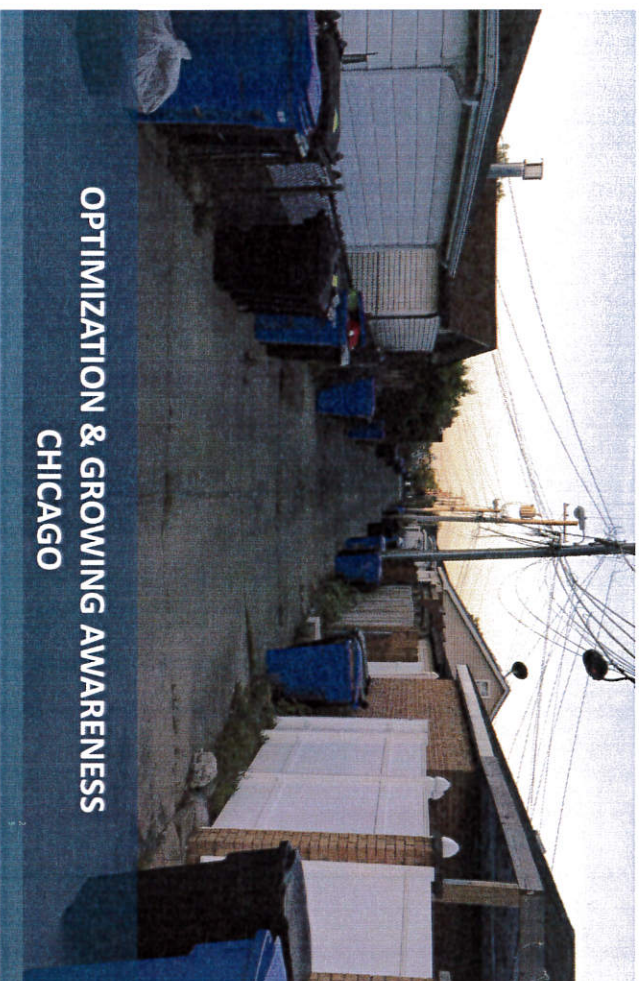


participation remained level

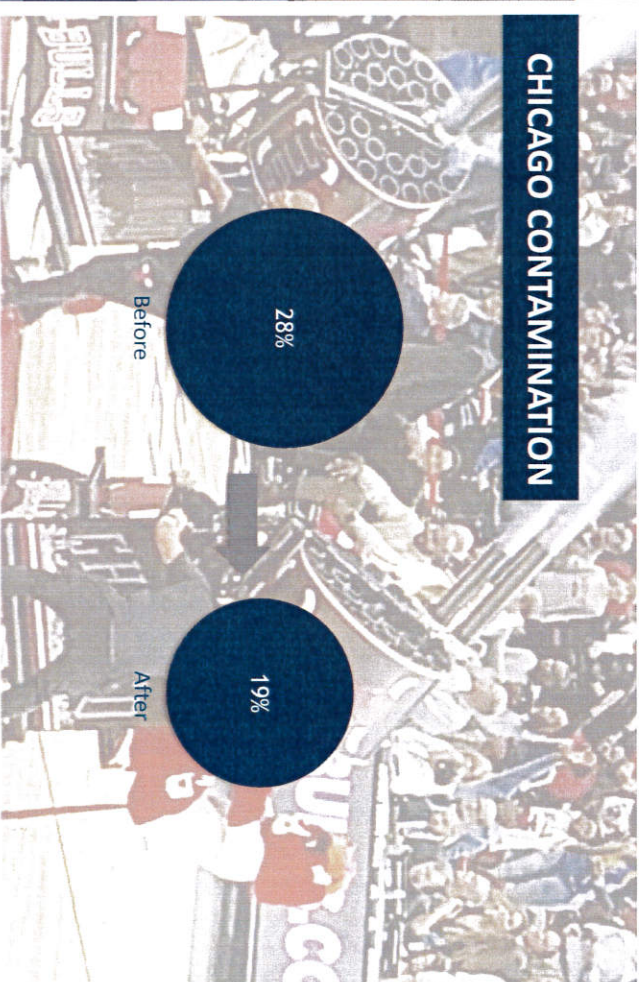
SNAPSHOT OF ATLANTA



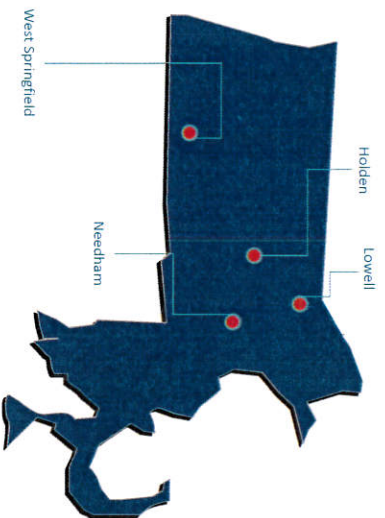
OPTIMIZATION & GROWING AWARENESS CHICAGO



CHICAGO CONTAMINATION

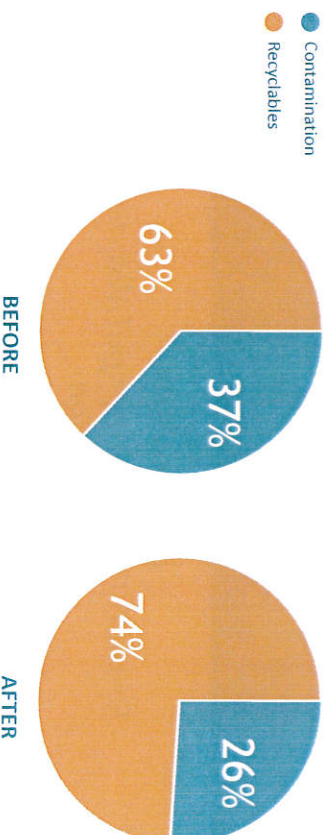


MASSACHUSETTS CONTAMINATION (2016)



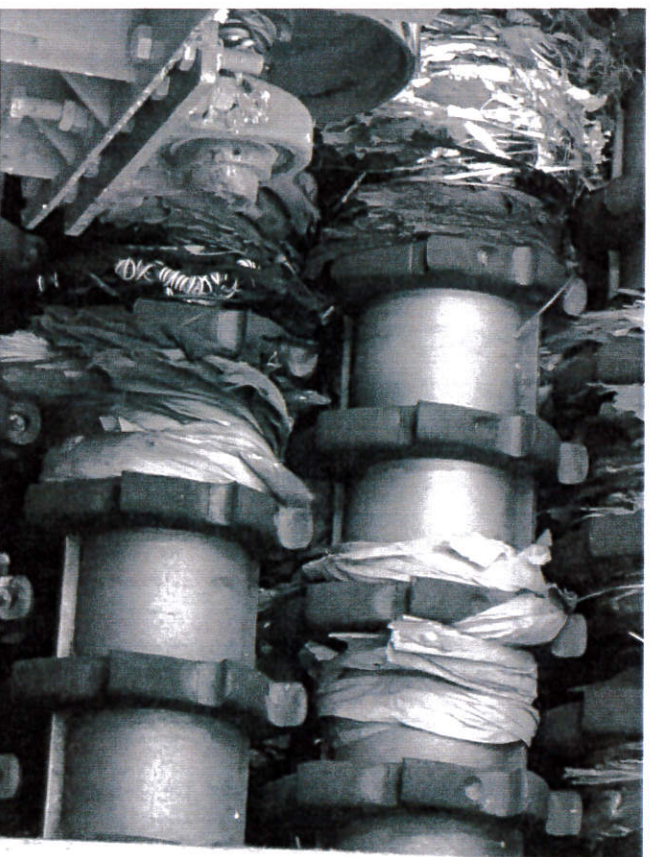
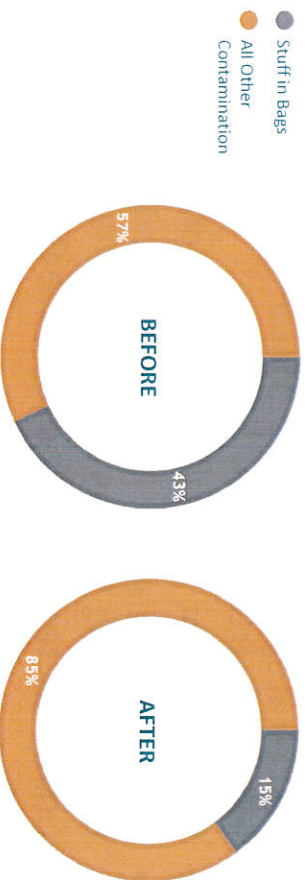
CURBSIDE: Overall Contamination Trended Downward

LOWELL and W. SPRINGFIELD



CURBSIDE: Targeted Material Trended Downward

LOWELL and W. SPRINGFIELD



#CleanRecyclingIsBetter



Reducing Contamination in Recycling Programs

Brooke Nash

Branch Chief, Municipal Waste Reduction

brooke.nash@state.ma.us

How We Got Here

- ▶ MRFs, haulers and municipal officials concurred: contamination is growing problem
 - Top five contaminants
 - The “dirty dozen” - Springfield, MA
 - Equipment shutdowns, fires, costly repairs
 - Audits of incoming material; surcharges
- ▶ Then.... National Sword



How We Got Here

- ▶ 2014 stakeholder group on contamination
- ▶ 2015 MassDEP market research on recycling knowledge and behavior showed:
 - Residents confident about recycling knowledge
 - But opposite is true; only 1 in 10 are “all” or “mostly” correct in recycling knowledge index
 - Nearly 8 in 10 think all plastic w/resin ID is OK in household recycling bin



MassDEP and TRP Join Forces

- ▶ Two grants to Recycling Partnership (2016 & 2017)
- ▶ Test strategies to reduce contamination, increase participation
- ▶ Hands-on, not your typical education initiative
- ▶ Staff on the street: lifting lids, leaving oops tags, tracking tagging rate over time
- ▶ Goals: Increase Quality, Increase Quantity



The Recycling IQ Kit is Born!



What's in the IQ Kit?

- ▶ Guidance for engaging with MRF and hauler
- ▶ Step by step instructions:
 - Identifying and training enforcement staff
 - Deploying core tools (education/outreach)
 - Budgeting for program costs
 - Collecting data, tracking results
- ▶ Customizable artwork

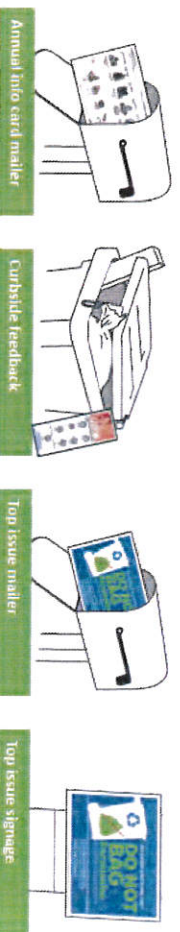


Tested and Refined

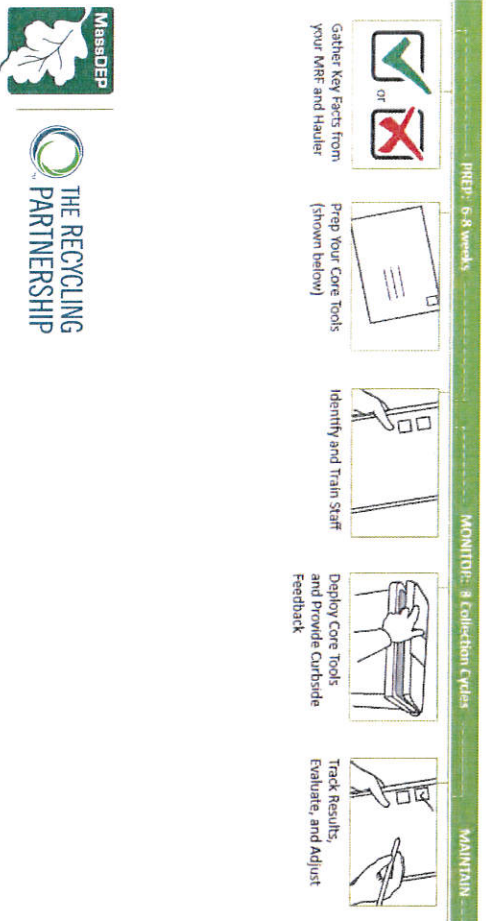
- ▶ 10 communities implemented the IQ Kit in 2016 and 2017
- ▶ Kick-off meeting with key players
- ▶ TRP and MassDEP staff on the ground with municipal staff
- ▶ 8 to 16 weeks of “interventions” at the curb
- ▶ Results/lessons learned reported at conclusion



CURBSIDE: Deploy these core tools



CURBSIDE: Follow these steps and timeline



INFORM - BASIC DO'S AND DON'TS

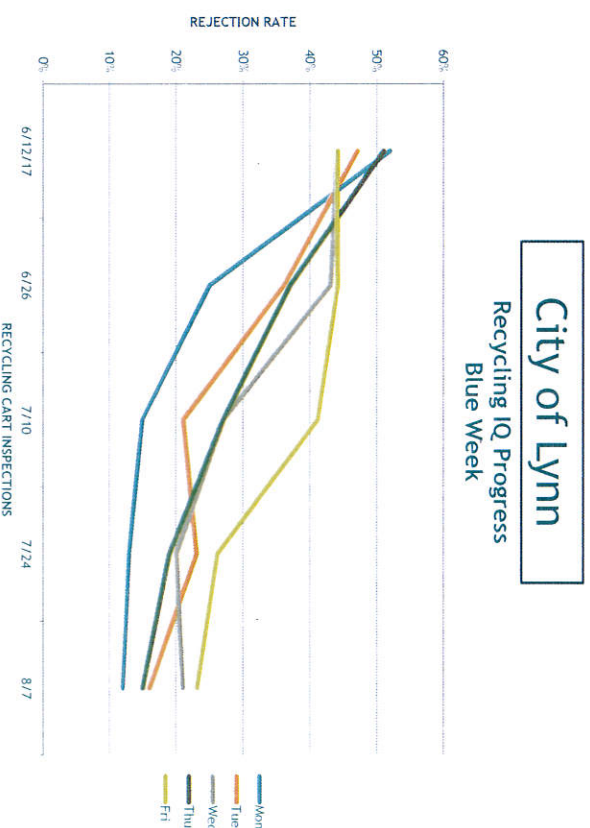
PERSONALIZED FEEDBACK

CURBSIDE: Tools

ISSUE SPECIFIC COMMUNICATIONS

MAILERS + MEDIA

MassDEP THE RECYCLING PARTNERSHIP



Recycling IQ Kit Grants

- ▶ All resources are “open source”.
- ▶ Recycling IQ Kit GRANT
 - Up to 40 hours of technical assistance
 - Funds for: printed materials, distribution, staff or temp workers for enforcement and data tracking.
- ▶ Curbside communities: \$10,000 to \$40,000
- ▶ Drop-off communities: up to \$7,500



What We've Learned

- ▶ Direct feedback at the curb (or drop-off) matters
- ▶ Hands-on approach is critical
- ▶ Leaving contaminated carts at the curb, with oops tag, is a must
- ▶ NOT an easy lift; political buy-in and resources are key
- ▶ Not a “one and done” effort



Find it on MassDEP website



MassDEP Recycling IQ Kit

If your community is dealing with recycling contamination challenges, the Recycling IQ Kit might be for you.



THE DETAILS

How to get
Next steps



CONTACT

MassDEP Recycling IQ Kit
Phone
Email

How Far Can We Take This?

- ▶ National Sword has hit hard in Mass
- ▶ Even greater urgency around contamination
- ▶ MassDEP committing substantial resources (grants and staff)
- ▶ 75 communities in next 3 years?
- ▶ 2018 IQ Kit Grant Application is open
- ▶ 7 awards next week; 10 more in pipeline



Next Steps

- ▶ Universal recyclables list - from MRFs
- ▶ PR/Marketing firm - assist with earned media and publicity:
 - IQ programs in action
 - What to recycle and why “quality matters”
 - Website splash page
- ▶ Ongoing dialogue with haulers and MRF operators



Questions?

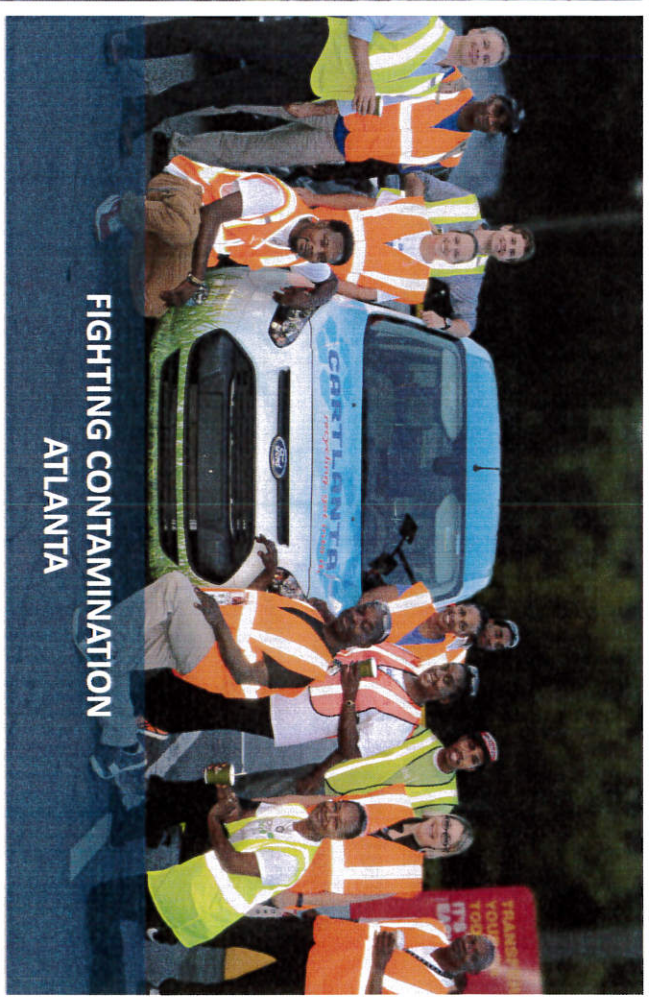
Janice Paré, Program Lead
janice.pare@state.ma.us

Or

Brooke Nash, Branch Chief
brooke.nash@state.ma.us



#CleanRecyclingIsBetter





THE ISSUE



RECYCLING PARTNERSHIP.ORG

The Plan:



The Execution:

RECYCLE



General Info



Direct Engagement



RECYCLING PARTNERSHIP.ORG



THE RECYCLING PARTNERSHIP

The Execution:

RECYCLE



General Info



The Execution:

RECYCLE



General Info



Direct Engagement

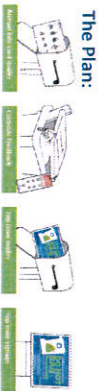


Contaminant Specific

Supporting Campaign

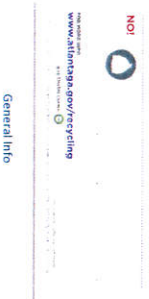


RECYCLING PARTNERSHIP.ORG



The Execution:

RECYCLE

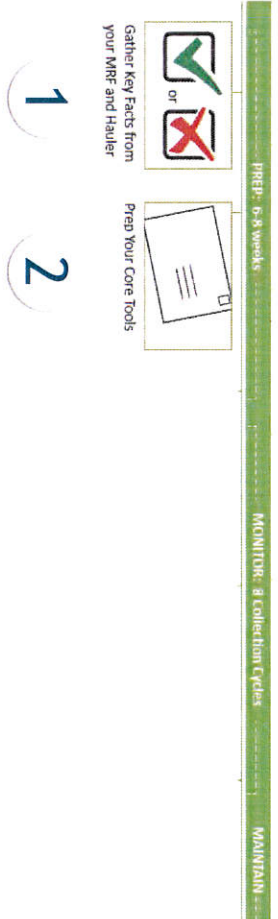


General Info
Direct Engagement
Contaminant Specific
Supporting Campaign

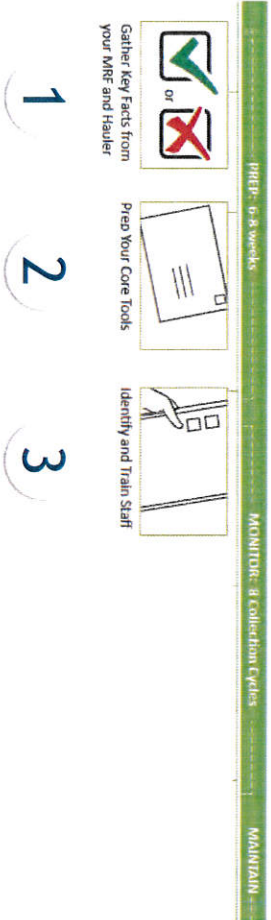
THE APPROACH



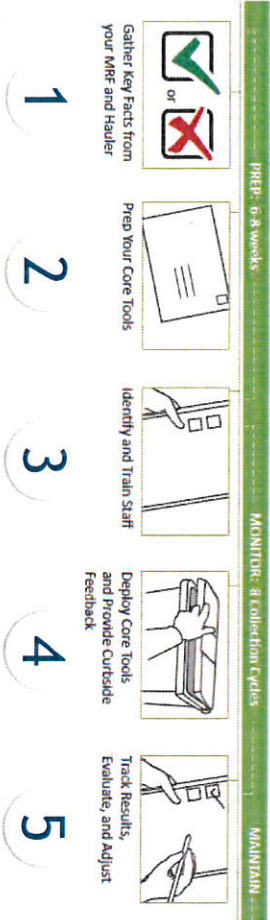
THE APPROACH



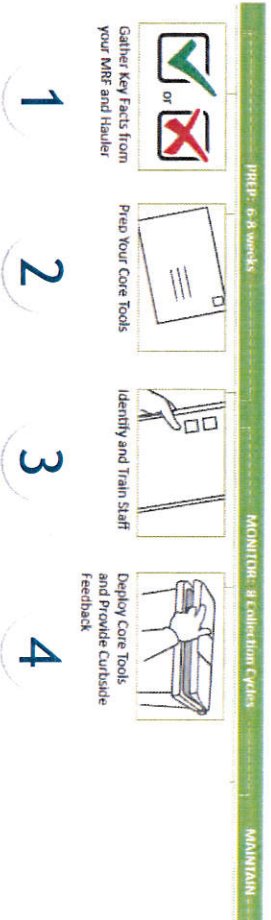
THE APPROACH



THE APPROACH



THE APPROACH



WHAT DO WE KNOW?

DISRUPTION
CHANGES BEHAVIOR

Learn from Denver

TAGGING WORKS

73%

recalled
tag



25%

increase in
capture

Learn from MA

REJECTION WORKS

45%

tagging decrease
in Dartmouth

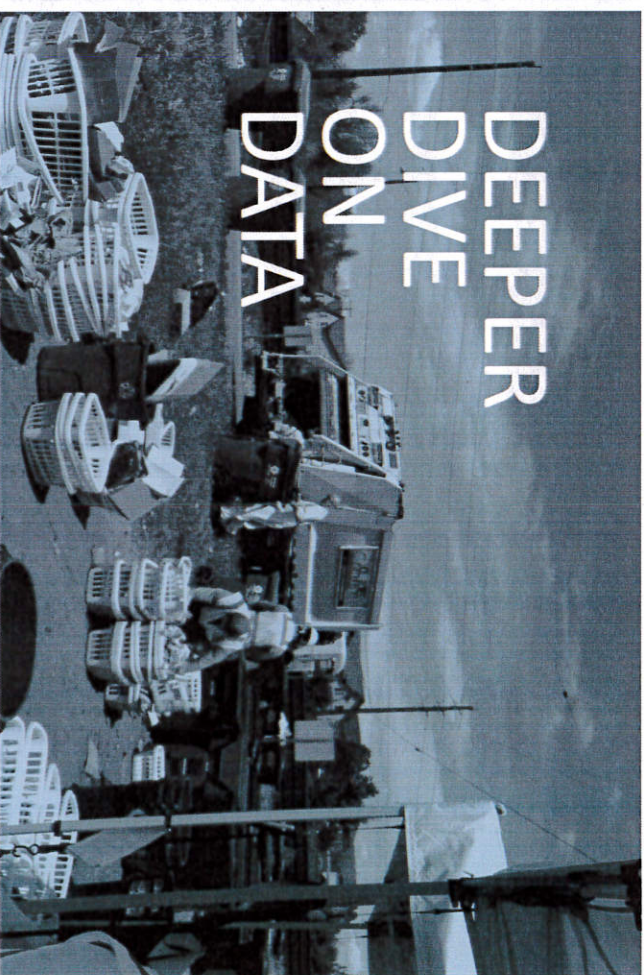


22%

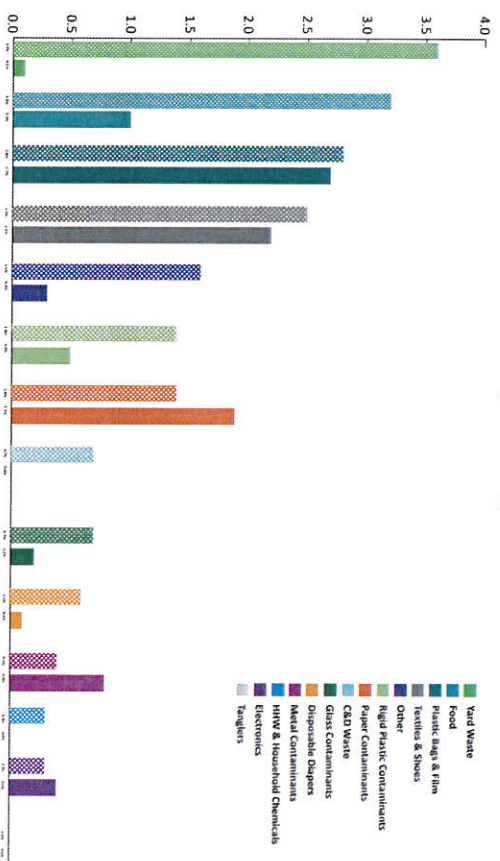
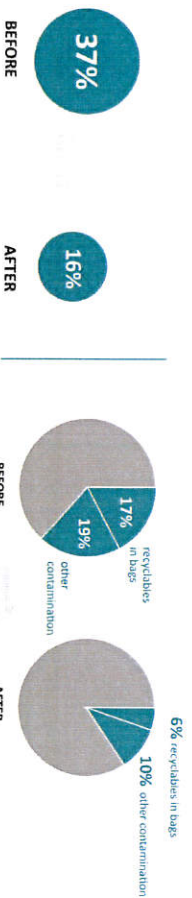
tagging decrease
in New Bedford

IT'S
NEVER
DONE

DEEPER
DIVE
ON
DATA

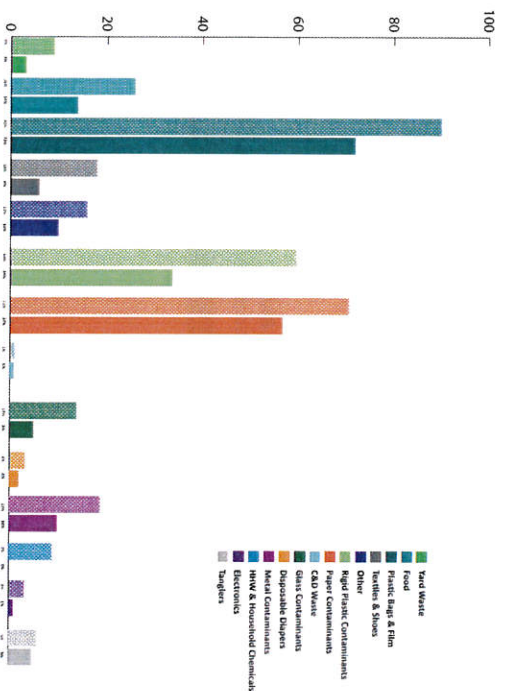


Atlanta Aggregate Contamination in Cart



Contamination by Weight (before and after)

Contamination by Occurrence (before and after)



How Much of Recyclables Are Really Going Where They Should?

CAPTURE RATE



ATLANTA - CAPTURE RATES

Before and After Data 2017 Pilot Areas - Single-Family - Curbside Service

OVERALL CAPTURE RATE

- Capture increased from 52% to 66%
- 8 out of 9 categories increased

Recyclable Materials



RECYCLINGPARTNERSHIP.ORG

ATLANTA - METAL CAPTURE RATES

Before and After Data 2017 Pilot Areas - Single-Family - Curbside Service

WHERE WAS THE METAL?



RECYCLINGPARTNERSHIP.ORG

ATLANTA - PAPER CAPTURE RATES

Before and After Data 2017 Pilot Areas - Single-Family - Curbside Service

WHERE WAS THE PAPER?

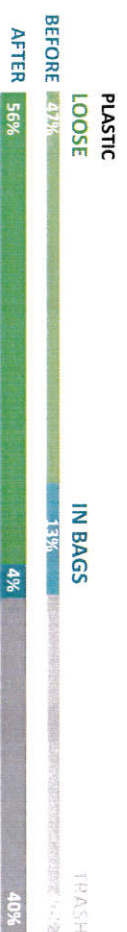


RECYCLINGPARTNERSHIP.ORG

ATLANTA - PLASTIC CAPTURE RATES

Before and After Data 2017 Pilot Areas - Single-Family - Curbside Service

WHERE WAS THE PLASTIC?

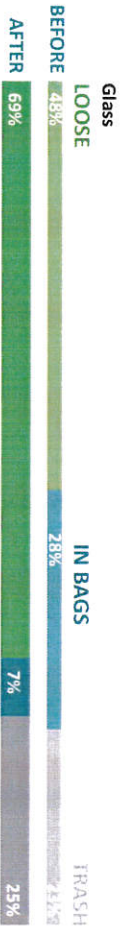


RECYCLINGPARTNERSHIP.ORG

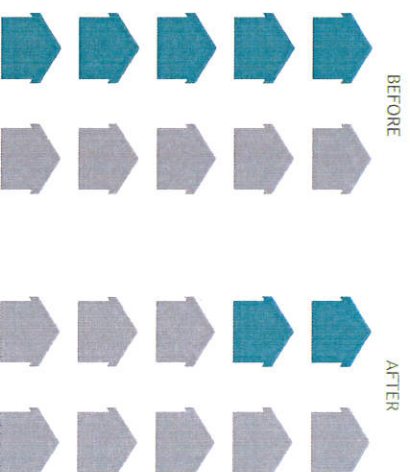
ATLANTA – GLASS CAPTURE RATES

Before and After Data 2017 Pilot Areas - Single-Family - Curbside Service

WHERE WAS THE GLASS?



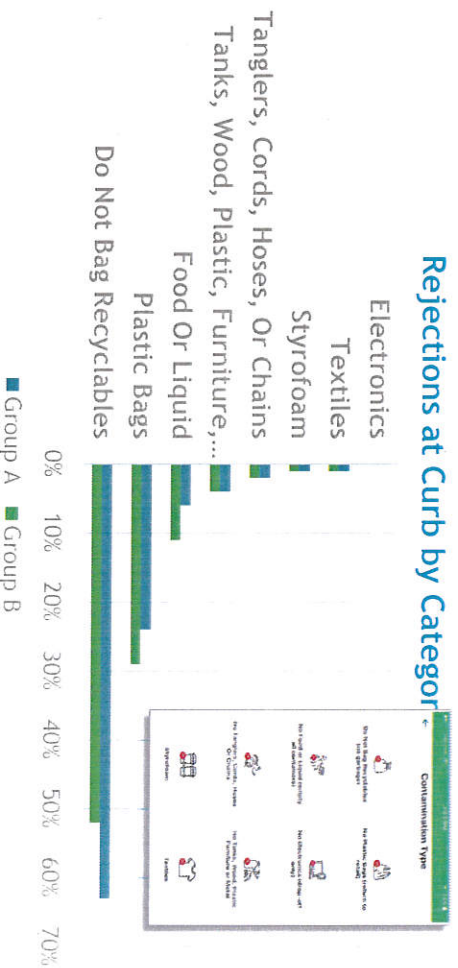
Homes with bagged recyclables fell from 52% to 22%



RUBICON GLOBAL APP

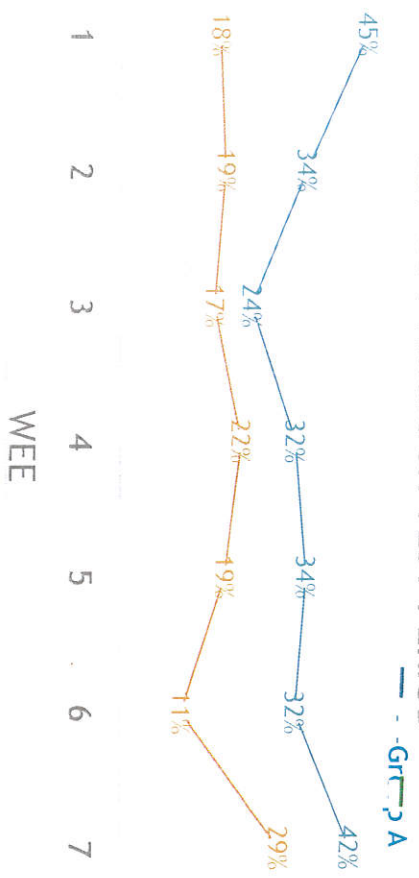


Rejections at Curb by Category



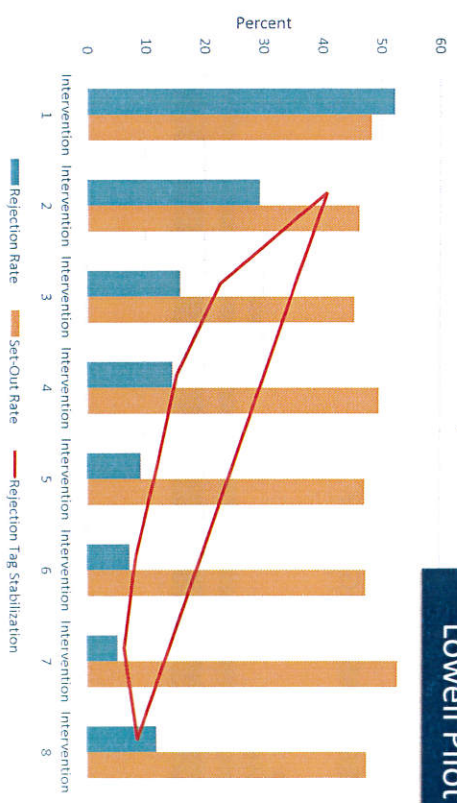
Note: Textiles and Styrofoam were added in last two weeks

SET-OUT THROUGH TEST PERIOD



Participation Group A: 82%
Participation Group B: 57%
(residents used cart at least once in 7 week period)

Poor Quality Route



Rejection and Set-Out Rates for Lowell Pilot

NEXT ACTIONS

- 1 Download at Tools.RecyclingPartnership.org or MassDEP
- 2 Sign up for e-newsletter
- 3 Follow us on Twitter & Facebook #CleanRecyclingIsBetter

**Responses to Questions Asked and Not Answered -
Decreasing Residential Recycling Contamination Webinar
March 22, 2018**

Topics

- [Rejection/Tag Related](#)
- [Contamination](#)
- [Single-Stream Curbside vs. Drop-Off](#)
- [Testing Protocols](#)
- [Education](#)
- [Plastic Bags](#)
- [Multi-family & Other](#)
- [Product Stewardship](#)
- [Policy](#)
- [General Program Questions](#)

Rejection/Tag Related

- What are your top 5 - 6 OOPS tag pictures?
 - Recycling Partnership:
According to a survey of The Recycling Partnership's MRF Working Group (which represents 70-percent of the processing capacity of the top 100 MRFs in the U.S.): Bagged recyclables; plastic bags (return to retail); Tanglers; HHW; Yuck; Li-Ion Batteries; Clothing
 - Brooke Nash, Massachusetts Department of Environmental Protection (MassDEP):
 - Bagged Recyclables
 - Plastic Bags/ Plastic Wrap
 - Food or Liquid
 - Clothing/Linens
 - Tanglers (Cords, Hoses, Chains or Electronics)
 - Big Items (wood, plastic, furniture, or metal)
- Has anyone utilized stickers on wheelie bins with pictures on what can go into the recycling container and does data exist on results of such an effort?
 - Recycling Partnership: Yes, in the form of stickers and in-mold labels, but we do not have any data on the efficacy of this approach.
 - MassDEP: Yes, some recycling carts have inlays that include which items are recyclable. However, we do not have any data on the results on contamination in bins with inlays vs. bins without. The Recycling IQ Toolkit includes artwork for [stickers for trash carts](#) that clearly indicate which materials can be recycled, however these go on the trash cart not the recycling cart. In 2018, some communities will use "oops" stickers in lieu of hanging tags on recycling containers without handles/carts.

- For the cart-tagging studies, how are you attaching the cart tags to the carts? What have been the challenges with this?
 - Recycling Partnership: We tried lots of different ways to attach tags to carts and the one we found most effective were attached with a simple wire to the handle of the cart.
 - MassDEP: The tags have a twist tie attached which are adhered to the cart handle. Overall the tagging process was simple and effective. There were a few instances where tags were removed prior to the collection truck coming through the area and we found that the paper tags don't hold up as well in inclement weather (snow, rain) which we advise communities to plan around. We are currently developing oops tag stickers for communities with recycling bins without handles.
- How does a cart rejection approach work in an every other week recycling program?
 - Recycling Partnership: No matter what the collection approach – every-other-week, weekly or monthly – the tag does the communication and should always be very specific. In our studies, Atlanta was collected weekly, whereas Denver and Chicago were EOW. The approach was effective in either of the collection schedules.
 - MassDEP: The IQ program is designed to work for both weekly and every other week recycling collection cycles. We tested it in both program types.
- What do you do if someone has a full recycling bin and collection is on a 2 week cycle? I'm concerned in our town that we'd end up with a lot of trashed recyclables and complaints.
 - Recycling Partnership: We didn't see a rise in the number of complaints when tagging on an EOW schedule. Too, if a cart was being rejected, it was highly contaminated, so the recovery of recyclables was already impacted.
 - MassDEP: This has not been an issue with the curbside programs running on a 2 week cycle. Largely this is because if a cart was rejected and tagged for contamination, removing the contaminants from the recycling bin (and placing them in the trash) introduced more room in the cart to accommodate for more recyclables.
- Are you familiar with the 'Gold Lid' program in Des Moines, IA which gives customers a gold lid on their recycling cart if they recycle right? Do programs like that work?
 - Recycling Partnership: Building a culture of recycling in your community through visible means is recommended and this program seems an excellent example of that.
 - MassDEP: In our own experience here in Massachusetts, we have found that providing corrective feedback through the “oops” tags and rejecting carts was more effective than positive reinforcement messages. This is why the “thank you” tags are included but not a requirement of the Recycling IQ Kit program. We have found that it's difficult to know if a resident truly is “recycling right” since you are not performing a full check of the entire contents of the bin but just lifting the lid and “bump checking” to see how heavy the bin is. There is a chance you could give positive reinforcement for a cart that actually contains a large number of contaminants that are just buried under the top layer of recyclables.

Contamination

- What are your suggestions in the event that the set-out rate does decrease [when you reject carts]?
 - Recycling Partnership: This has not occurred in our studies, but all rejection protocols should be cleanly communicated. If this is of great concern, make doubly sure that residents know that a potential of rejection is forthcoming.
 - MassDEP: We didn't see a decrease in set out rate in any of the communities where we have implemented the Recycling IQ Kit program and believe this is unlikely to happen. However, if it does we believe that with the current state of recycling markets, addressing recycling contamination is a greater priority at this point in time than increasing recycling rates.
- Are those drop offs in Massachusetts manned. Florida finds a lot of contamination in unmanned drop off locations.
 - Recycling Partnership: Yes, but for un-manned centers, short-term staffing (4-6 weeks) for the beginning of the campaign at peak drop-off times, supported by A-frame signage (and clearly signed containers), would be expected to be effective.
 - MassDEP: We tested at two staffed transfer/drop-off locations. During the 8 week program, staff were present to provide direct in-person feedback and to point to clear and simple signage.
- How can we access the market research that MassDEP did in 2015 which informed its work on contamination?
 - MassDEP: Here's the link to it. There are two documents. The first is the actual survey (the questions asked, the data collected, etc.). The second document is the results, summarized in a presentation. <https://www.mass.gov/lists/recycling-solid-waste-data-for-massachusetts-cities-towns>
- Can you touch on plastic film corruption in the recycling stream in this time period?
 - Recycling Partnership: Plastic film and wrap was addressed in each of the communities and saw an improvement in each campaign.
- Can you talk a little about the current contamination levels compared to the upcoming 0.5% and describe the main contaminants that will make compliance difficult?
 - Recycling Partnership: Since contamination is weight based, one might assume that bagged recyclables and trash in the recycling cart would be the largest issue(s) to address. Any outgoing contamination at the MRF will be impacted by incoming feedstock, which is why this curb-level communication effort is so important.
 - MassDEP: Current operations are struggling to meet the 0.5% contamination level.
- Any insights into the biggest reasons WHY people put wrong material in recycling containers?
 - Recycling Partnership: Anecdotal data suggests that residents want to recycle, but they are sometimes not supported with the right or directed tools to recycle correctly.
 - MassDEP: There has been an increase in "wishcycling" where people place non-recyclable materials in their single stream containers with the hope that it could be recycled. Part of this

can be attributed confusing labels (e.g. the resin identification code on plastic bags and containers). There has been a lot of messaging over the years on “all plastics 1-7” are okay in the bin which has led to confusion on which items belong or don’t belong in your bin.

Single-Stream Curbside vs. Drop-Off

- Please provide an explanation for why single-stream recycling or even trash-recycling combinations are or are not available in all municipalities.
 - Recycling Partnership: Among cities that collect via curbside, 89% collect via single-stream, typically because of the efficiencies and increased safety that that collection style enjoys.
 - MassDEP: The type of recycling program offered (i.e. single stream, dual stream, source separated) are decided at the local municipality level in conversation with the MRF and Hauler operations in the service area. These decisions can be based on local resources available for implementing a recycling program (i.e. staff and equipment needed to implement curbside vs. drop-off program), density of population served, and the technology and preference of local MRF and Hauler operations.
- Did the residents put their [recyclables] in bags ... was that the issue?
 - Recycling Partnership: Working with the MRFs in each community, bagged recyclables were treated as waste at the MRF and was the top issue in each given community.
 - MassDEP: Yes, putting recyclables in bags is one of the largest contamination issues we see.
- Is anyone looking at switching back to curbside source separated from single stream?
 - Recycling Partnership: Not that we are currently aware of.
 - MassDEP: It’s been a topic of discussion and some of the transfer stations have switched back to more source separated streams. However, it’s based on the technology available at the MRFs and may not be worth the change.
- For Dylan: Why would it make sense for a big city to change from dual stream recycling to single stream at this point? Wouldn't this increase contamination and costs, and make marketing harder?
 - From Dylan, Recycling Partnership: I am unaware of any large city in the U.S. other than NYC that is still offering dual-stream collection (I am not counting glass-on-the-side locations such as Portland, Ore., etc.).
- You stated you don't note much contamination at drop box facilities; is this data with relatively larger municipalities? Have you worked with smaller or more rural cities that do experience contamination at their sites with less resources available?
 - Recycling Partnership: Staffed drop-off sites typically do not have contamination issues, and those sites are typically in more-populated areas (though not always). Unstaffed sites often suffer from illegal dumping issues, which is not the same as contamination issues, which can be ameliorated by signage and clear communication.

- Jason Hale mentioned that it is environmentally better to collect single stream. If the material can't be sorted effectively and get recycled correctly, how is that environmentally better? Please explain.
 - Recycling Partnership: <http://tools.recyclingpartnership.org/wp-content/uploads/2015/05/single-stream-carts-infographic.pdf>

Testing Protocols

- How big of a test area do you suggest?
 - Recycling Partnership: At least two collection routes.
 - MassDEP: We recommend using a test area that encompasses the worst 2 routes in the community and scaling up from there based on the availability of local resources that can be dedicated to implementing the program.
- You mentioned the Rubicon App. Was this app used by the staff actually inspecting the curbside carts to collect data and record Oops tags?
 - Recycling Partnership: Yes.
 - MassDEP: No. MassDEP does not promote a specific app and one hasn't been used in any of the recycling IQ kit program communities to date.
- Was the capture rates figured on pounds or occurrence?
 - Recycling Partnership: Both.
 - MassDEP: Capture rates were determined by weight (lbs).
- Did you check all carts in Atlanta during the 8 weeks? Or just a portion of the city?
 - Recycling Partnership: Just on the studied routes, four total routes, one in each quadrant of the city.
- How many data points does your street team collect at each cart?
 - Recycling Partnership: Whether the cart was set out and whether it visually contained one of the top five contaminants.
 - MassDEP: The MassDEP Recycling IQ Kit program requires collecting the set out rate and rejection rate or "tagging rate". However, communities can (and have) collect additional information if they wish such as which of the contaminant materials they are seeing in each of the rejected carts.

Education

- Dylan- we're embarking on a regional media campaign against plastic bags. Any tips or ideas for what to call it?
 - Recycling Partnership: The Wrap Recycling Action Program (WRAP) is an excellent tool to help support your efforts. You should contact them for more information and programmatic support. <https://www.plasticfilmrecycling.org/recycling-bags-and-wraps/wrap-consumer-content/>

- Please expand on "behavior change work" and what that campaign looks like from an outreach/education/engagement perspective
 - Recycling Partnership: Direct engagement of a specific resident-level action can be a powerful tool, which is why this communication program at the curb is so effective.
- Considering the current situation with recyclables markets, do you recommend that local recycling staff actively work on getting more recyclables out of the trash in addition to efforts to combat contamination?
 - Recycling Partnership: Our advice is to focus on your top issue at a given time and not to confuse the resident. If your top issue is contamination, then target that. If your top issue is participation, target that.
 - MassDEP: We recommend local recycling staff focusing primarily on combatting contamination at this point in time.
- Is it any wonder that 8 in 8 think all plastic w/resin ID is okay when there have been many years of messaging saying "all plastics 1-7" are okay in the bin? What role have MRFs or education played in getting to this point?
 - MassDEP: Certainly there has been mixed messaging over the years and confusion over the plastic resin ID. One thing we are working on here in Massachusetts is developing a universal recycling list to help address the confusion on which items belong or don't belong in the recycling bin.

Plastic Bags

- Are plastic bag bans impacting contamination or not?
 - Recycling Partnership: We are unaware of strong data to suggest that bag bans have impacted contamination at the curb.
 - MassDEP: We don't currently have data on this to see if bag bans have decreased contamination or not.
- Hefty is promoting bags for resident to bag their recycling in municipal programs, where applicable. Can the Partnership have a chat with Hefty?
 - Recycling Partnership: We appreciate the suggestion.
- Do any of the cities The Recycling Partnership has worked with have plastic bag bans?
 - Recycling Partnership: We do not believe so, though that is not a variable considered when working with a given community.

Multi-family & Other

- Have you noticed any variation in contamination rate between different residential sectors? (Single Family vs Multi Family) (Public Spaces vs residential routes)?
 - Recycling Partnership: The Recycling Partnership has concentrated on the single-family home to date, though we expect to begin operating in other sectors in the near future.
 - MassDEP: Yes! Contamination in public spaces is a real problem. We don't have raw data on whether there is a difference in contamination rate across residential sectors. That said, addressing contamination is more complicated with Multi Family units due to resident turn-over, shared carts, and not knowing which cart goes to which unit which makes accountability difficult.

- What are your best suggestions to get landlords in multi-family/residential interested in increasing their diversion rate?
 - Recycling Partnership: Show them that their potential residents wish to have recycling and assist in coordinating service. Also, many communities have had success in using policy.
 - MassDEP: We are still learning about this and open to suggestions.
- Can the speakers talk about areas with apartment buildings? It all seems to be geared towards single-family areas.
 - Recycling Partnership: See above answer.
 - MassDEP: Over half of the communities where the Recycling IQ Kit was implemented serve small multi-family buildings (2-6 units) in their curbside collection program. These buildings were included in the IQ program. A modification of the program would be needed for large apartment and condominium complexes where recyclables are collected at a central dumpster.
- If clean recycling is better, how does the panel believe that residents, school systems, offices should keep white paper separate in single stream systems?
 - Recycling Partnership: White paper should be included in a given recycling system, but keep the other materials clean, dry and on the accepted materials list.

Product Stewardship

- Curbside contamination is important, but the system relies on outlet markets for secondary materials to be incorporated into new domestic packaging. Have your funding organizations, who produce much of the packaging that ends up in our curbside bins, committed to binding timelines and quantitative targets for the portion of their packaging that will be made with secondary materials? If not, what can be done to get them to do this?
 - Recycling Partnership: It is increasingly common for companies (including our funders) to have recycled content goals for their own packaging and have also increasingly signed on to efforts such as the Association of Plastic Recycling's Recycling Demand Champions program (13 to date, and counting). We applaud and continue to support these efforts.
- I know Dunkin Donuts is popular in Mass. I also know coffee cups are a major contaminant at many MRFs. Is the Recycling Partnership undertaking any producer responsibility partnerships, with companies like Dunkin Donuts, to ensure the ultimate recyclability of large contamination streams?
 - Recycling Partnership: Coffee cups are not a major contaminant in any recycling stream that we are aware of. Also, through our partnership with the Sustainable Packaging Coalition, ASTRX (Applying Systems Thinking to Recycling), we endeavor to have an impact on packaging design recyclability.

Policy

- Will there be policy to separate glass and organics universally in 2 years?
 - Recycling Partnership: Not that we are aware of. Policy is very specific from state to state and community to community we are not aware of any umbrella effort to this end.

General Program Questions

- Is the grant regional? I'm in the Midwest, can I apply for the grant?
 - Recycling Partnership: Grants are available to any U.S. community [currently, greater than 4000 households]. Please do apply for the grant.
 - MassDEP: The grant is for municipalities in Massachusetts only. However, the Recycling IQ materials are all open source and available for use in any community.
- Brooke- how do you recommend getting other states on board with implementing a similar program in their state?
 - MassDEP: All of our Recycling IQ program materials are open source and available for other states to utilize. We would encourage other states to start talking to their MRFs and municipalities with high contamination levels and to utilize the strategies in the Recycling IQ Kit to implement a similar program focused on increasing recycling quality.
- Is there any RFP or contract language in hauling contracts that you can suggest to make these efforts easier?
 - Recycling Partnership: We worked on some tips in partnership with Massachusetts DEP that is available in PDF form here:
https://www.dropbox.com/s/dr2vdkjf0oqdd1/MA_CurbsideContractConsiderations.pdf?dl=0
 - We don't have specific contract language but we do have a [list of considerations](#) to keep in mind when developing contracts with haulers and MRFs.
- Did you find high contamination rates correlated to any community characteristics? For example, was it higher in commercial areas vs single family homes, higher vs lower property values?
 - Recycling Partnership: We found that routes that had a higher concentration of multi-family units had a higher rate of contamination. We found the same levels of contamination in the higher- and lower-property value homes, but the most prevalent contaminant differed.
 - MassDEP: We have not looked at this data to see if there is a correlation.
- Define a PRF, for folks that don't know that that is a facility for plastics 3-7.
 - Recycling Partnership: A Plastics Recovery Facility (PRF) sorts different types of plastic containers, as opposed to a Materials Recovery Facility (MRF) which sorts out all curbside collected materials. A PRF typically supports an existent MRF infrastructure.
 - MassDEP: PRF stands for **Plastics Recycling Facility**. A PRF sorts different types of plastics using optical sorting technology. For instance, separating Polyethylene Terephthalate or PET (Plastic #1) from High Density Polyethylene or HDPE (Plastic #2). By sorting the different types of plastics, you increase the quality and value of the recycled products.



County of Los Alamos

Staff Report

March 15, 2018

Los Alamos, NM 87544
www.losalamosnm.us

Agenda No.: E.

Index (Council Goals):

Presenters: James Robinson

Legislative File: 10558-18

Title

Discuss the 2018 Business Recycler of the Year

Recommended Action Motion

N/A

Body

The ESB will discuss the 2018 Business/School Recycler of the Year Award.

Attachments

G - Los Alamos County Recycler of the year criteria

Los Alamos County Recycler of the year

Recommended criteria to evaluate

- 1). Does the company measure the amount of waste they produce and how much is diverted from the waste stream?
- 2). Does the company use recycled and/or environmentally preferred supplies and materials?
- 3). Does the company have a recycling program which includes:
 - Paper
 - Cardboard
 - Plastic
 - Glass
 - Metal
 - Composting
 - Wood
- 4). Has the company integrated environmental concerns into their products and services?
- 5). Does the company also educate and support their consumers in reducing waste or re-using or recycling materials?
- 6). Has the company made efforts to reduce the use of plastic by employees or in the company's products?
- 7). Does the company have a mission that includes a positive environmental impact?
- 8). What is your average waste output, how has that been reduced and to what extent in the past year?
- 9). How do you ensure that hazardous waste is disposed of properly?



County of Los Alamos

Staff Report

March 15, 2018

Los Alamos, NM 87544
www.losalamosnm.us

Agenda No.: F.

Index (Council Goals):

Presenters: James Robinson

Legislative File: 10561-18

Title

Technical Widget

Recommended Action

N/A

Body

The ESB will discuss call out for Technical Widget Award to promote sustainability at Science Fest.

..Attachment

N/A



County of Los Alamos

Staff Report

March 15, 2018

Los Alamos, NM 87544
www.losalamosnm.us

Agenda No.: 2).

Index (Council Goals):

Presenters: Susan Barns

Legislative File: 10574-18

Title

Waste Zero - Presentation Overview

Recommended Action Motion

N/A

Body

The ESB will receive an overview of the Waste Zero Presentation: Overview of the Save-As-You-Throw Approach to Residential Waste Reduction

Attachments

I - Overview of the Save-As-You-Throw Approach to Residential Waste Reduction



Overview of the Save-As-You-Throw Approach to Residential Waste Reduction

Prepared for Los Alamos County, NM

March 2018



Today's Presentation



- 1 WasteZero Background
- 2 Save-As-You-Throw (SAYT) Overview
- 3 Estimated Impact of SAYT in Los Alamos County
- 4 Questions & Answers

About WasteZero



- In business since 1991, & 100% driven to **cut trash in half across the US**
- **National leader** in municipal waste reduction, working with cities and towns across the US
- Experience with a **full range** of waste reduction approaches
- Comprehensive capabilities, from **consulting** to **program management**
- **100% success rate** with WasteZero-designed programs
- Certified **B Corp**, meeting rigorous social & environmental standards
- Based in Raleigh, NC, with regional support around the nation



Overview of WasteZero's Key Program Types



**SAYT / Unit
Based Pricing**



Yard Waste



Organics



Textiles

Consulting —> Program Design —> Pilot Development —> Full-Scale Implementation

Save-As-You-Throw (SAYT) Overview

The Traditional Trash System



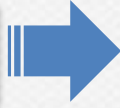
Electricity



Gas



Water



Residents pay for most utilities based on how much they use. Trash is different: In most places, trash is the last unmetered utility...

1 Flat Fee or No Fee

City of Anytown, USA
PO BOX 1234
ANYTOWN, USA

Water Usage

Month	Usage (Cubic Feet)	Rate
Jan	10	\$1.00
Feb	12	\$1.20
Mar	15	\$1.50
Apr	18	\$1.80
May	20	\$2.00
Jun	22	\$2.20
Jul	25	\$2.50
Aug	28	\$2.80
Sep	30	\$3.00
Oct	32	\$3.20
Nov	35	\$3.50
Dec	38	\$3.80

Solid Waste \$25.00

City of Anytown, USA
PO BOX 1234
ANYTOWN, USA

2 Request



3 "Blank Check"



"Fill 'er up!"

The flat fee or "no fee" approach causes waste and provides no incentive to recycle.

Save-As-You-Throw (SAYT) Makes Trash Like Other Utilities

SAYT treats trash like any other utility: Residents pay for trash based on how much they generate. If they recycle more and throw away less, they pay less. The economic incentives to reduce waste are strong.

Benefits:

- ✓ Solid waste is reduced
- ✓ Recycling increases
- ✓ Collection and disposal costs drop
- ✓ The environment is improved
- ✓ Landfill life is extended



Types of SAYT

SAYT programs can take different forms. Bag-based systems are by far the most effective, in WasteZero's experience.



Variable-Rate Carts

Residents choose from among different sizes of carts, paying more per month for larger carts and less for smaller ones.

Average Waste Reduction

15%¹



Stickers/Tags

Residents pay by the bag by affixing a pre-paid tag or sticker to each bag of trash. Stickers are sold at local retailers, with proceeds going to the City.

25%²



Bags (or bags in carts) **Most Effective**

Residents dispose of waste in official trash bags approved by the municipality and clearly marked with the municipal seal. Bags are sold at local retailers, with proceeds going to the City.

44%³

Notes:

1. SCS Engineers, "Pay-As-You-Throw Options—Long-Range Solid Waste Master Plan," Report to City of Springfield, Mass., Dec. 20, 2010; Confirmed by WasteZero analysis of variable rate cart programs in 9 states across the US.
2. WasteZero experience with 150 tag / sticker-based programs, including multiple programs that converted from stickers to bags and saw a further 25-30% waste reduction.
3. WasteZero experience with 225 bag-based programs; Data from WasteZero "WasteZap" database; Confirmed by Mass. DEP data showing bag-based SAYT systems result in annual per capita pounds of trash 48% below the national average.

Bag-Based SAYT

How It Works

Bag-based SAYT ([see video](#)) is the most effective available means of reducing municipal solid waste.

- 1 Cut Fixed Fees (if possible)
- 2 Pay per Bag for Trash
- 3 Residents Recycle More

Service	Unit	Rate	Amount
Water Charge	100 GPF @ \$0.12	\$12.00	\$12.00
Solid Waste Charge	100 GPF @ \$0.12	\$12.00	\$12.00

Solid Waste \$12.00



- Fairer to residents
- Easy to implement

- No direct cost to the City
- Works with any collection method, automated ([see video](#)) or manual

Bag-Based SAYT

Compliance Process with Automated Collection

See [video](#)



Official bags are placed in automated carts for collection



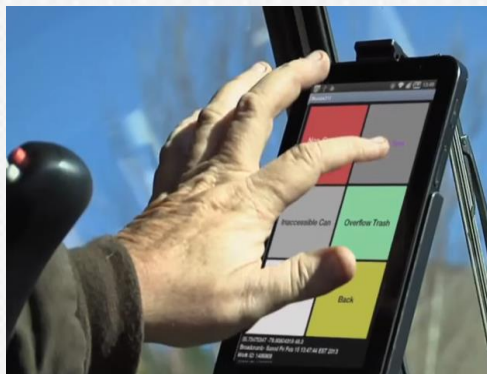
Trucks are equipped with video cameras mounted to the hopper (standard on most automated trucks)



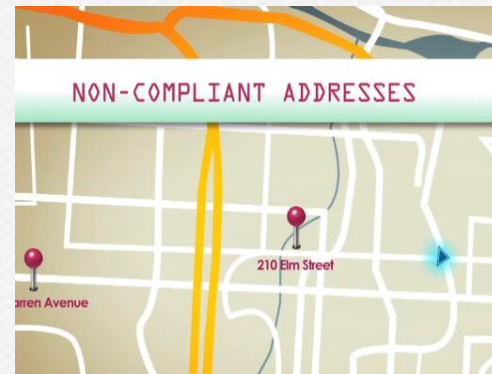
Camera clearly shows what goes into hopper



Driver can easily see non-compliant bags on video screen



Driver pushes one button on Mobile311 app (or similar solution) if non-compliant bags are spotted



Non-compliant addresses are auto-uploaded to central database so notices (or citations) can go out.

Bag-Based SAYT

Core Program Components

To run optimally, bag-based programs require a range of components.

Official Bags



- Drawstring closure for convenience, litter control
- Trash bags identifiable by
 - Color
 - Printing

Distribution



- Delivery to retailers for sale or distribution to residents
- Retailer relationship management
- Order processing and fulfillment
- Inventory management
- Customer service
- Accounting and reporting

Communications



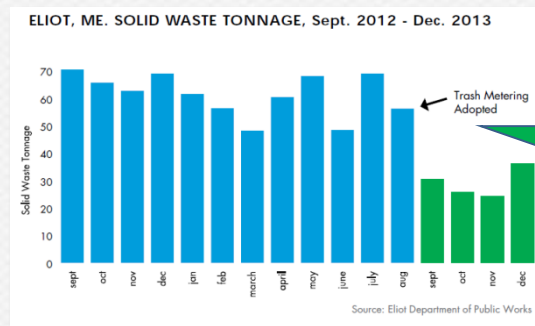
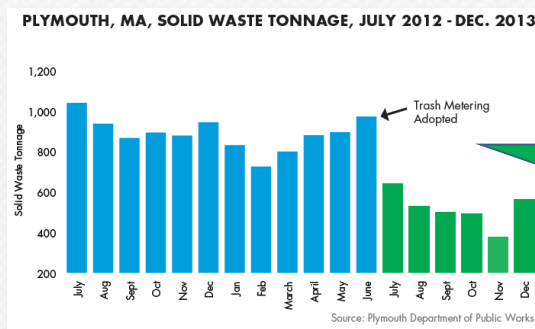
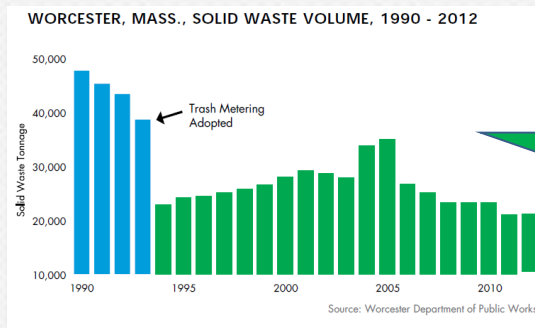
- Communications to educate residents about the program:
 - Launch Announcements
 - Program Web Site
 - Customer Service
 - Educational Materials
 - Media Relations

These programs can be structured to operate at no direct cost to the municipality. WasteZero can provide all of the components above, and is paid only by collecting a portion of retail sales, with the rest going to the County.

Bag-Based SAYT

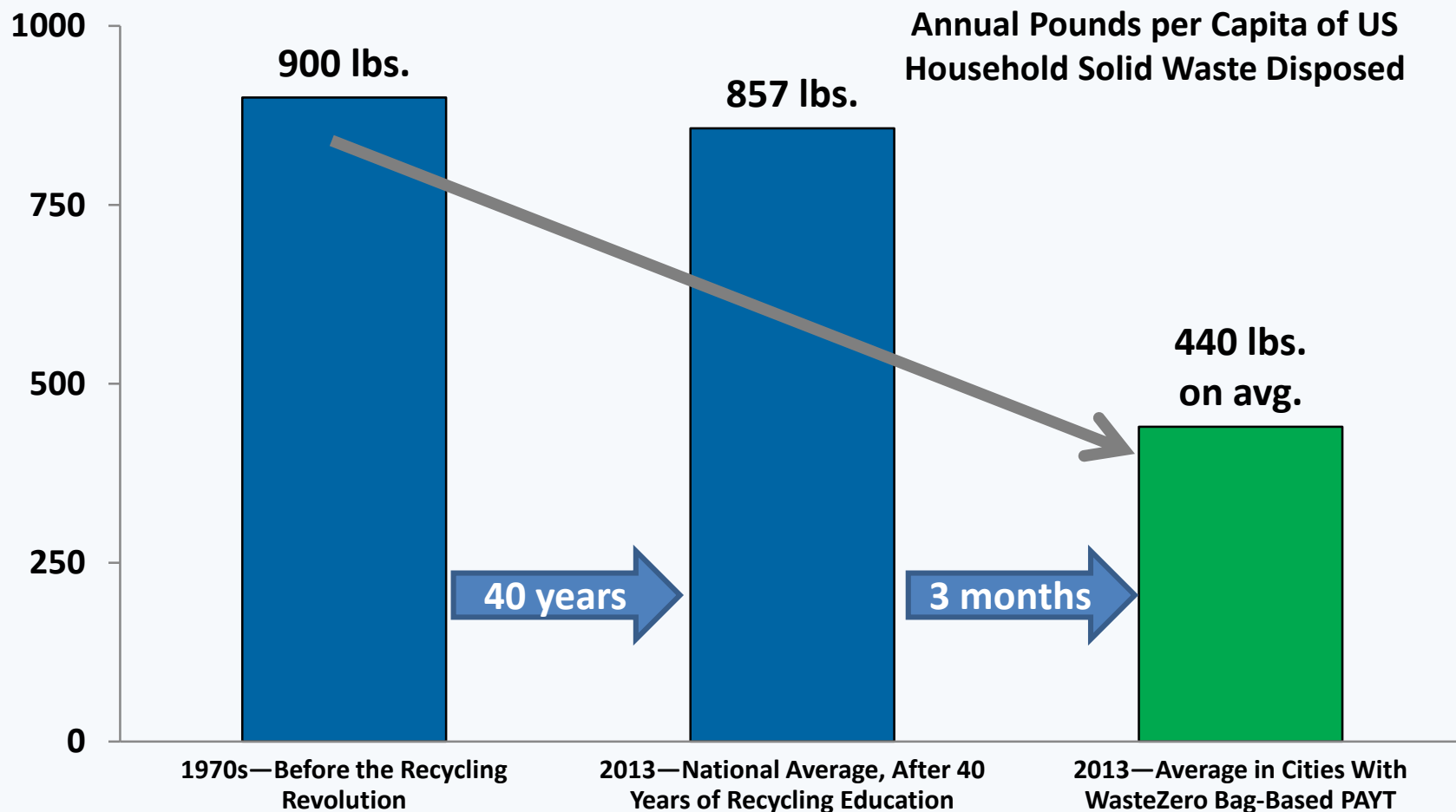
Typical Results

- Average residential trash reduction of 44%
- Substantial increases in recycling
- Significant results within 30-60 days
- Permanent impact
- Effective in cities and towns, regardless of
 - Population size
 - Average income level
 - Geographic region (examples in the NE, SE, and MW)
 - Method of trash collection



Bag-Based SAYT

Typical Results - *Continued*



Note: Calculations Based on Data from *Advancing Sustainable Materials Management: Facts and Figures 2013*, US EPA, June 2015

Estimated Impact of Bag-Based SAYT in Los Alamos County, NM



Los Alamos County

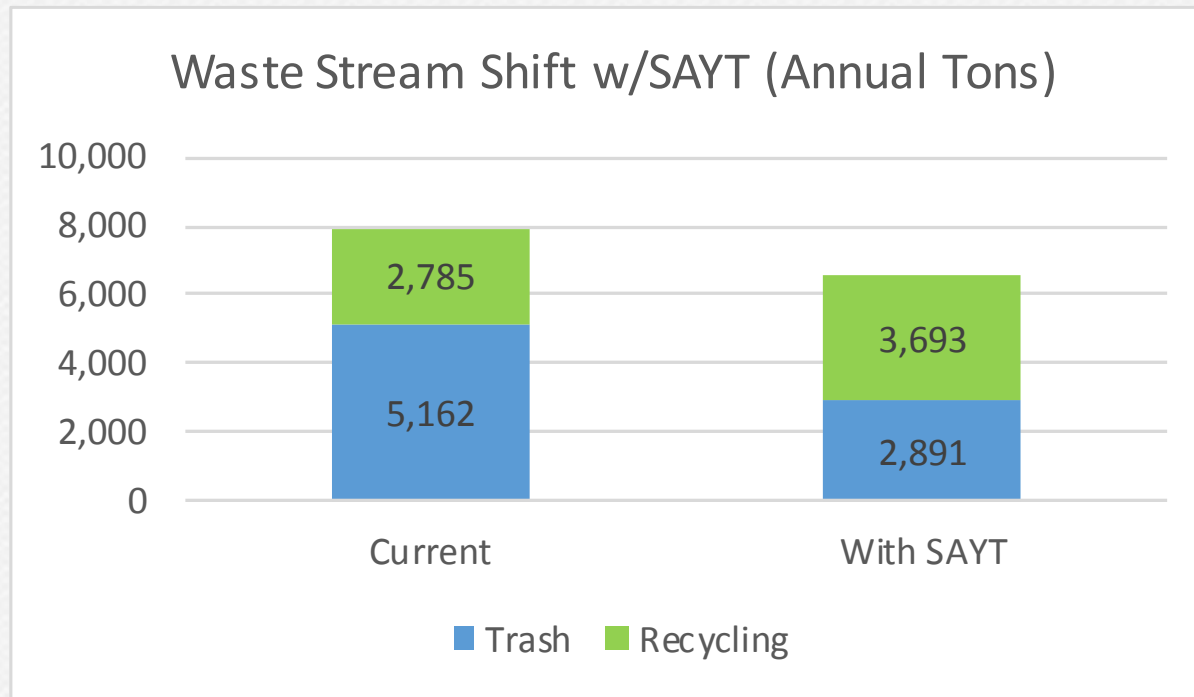
Background Data



# HH & People with Trash Service	<ul style="list-style-type: none">• 6,850 served households• Estimated served population of 16,385 (2.39 people per HH, per US Census)
Collection Protocols	<ul style="list-style-type: none">• Automated Curbside Trash in Carts• Automated Curbside Single-Stream Recycling in Carts (Glass is drop-off only)• Curbside Yard Waste (Quarterly)
Collection Responsibility	<ul style="list-style-type: none">• County
2017 Residential Trash	<ul style="list-style-type: none">• 5,161.84 tons
2017 Residential Recycling	<ul style="list-style-type: none">• 2,785 tons
Household Fee	<ul style="list-style-type: none">• \$25 per month for trash (\$300 per year); Recycling included
Trash Tip Fee	<ul style="list-style-type: none">• \$47.32 total:<ul style="list-style-type: none">– \$24.55 per ton to tip at Rio Rancho landfill (Waste Management)– \$22.77 per ton to haul
Recycling Tip Fee	<ul style="list-style-type: none">• \$15, though a rebate may be paid if market conditions allow
Sanitation Financial Status	<ul style="list-style-type: none">• Q1 2018 Deficit for Residential Trash: \$77,401.⁴¹ (\$309,606 annualized)• Q1 2018 Deficit for All Enviro Services: \$59,015.⁶⁸ (\$236,063 annualized)

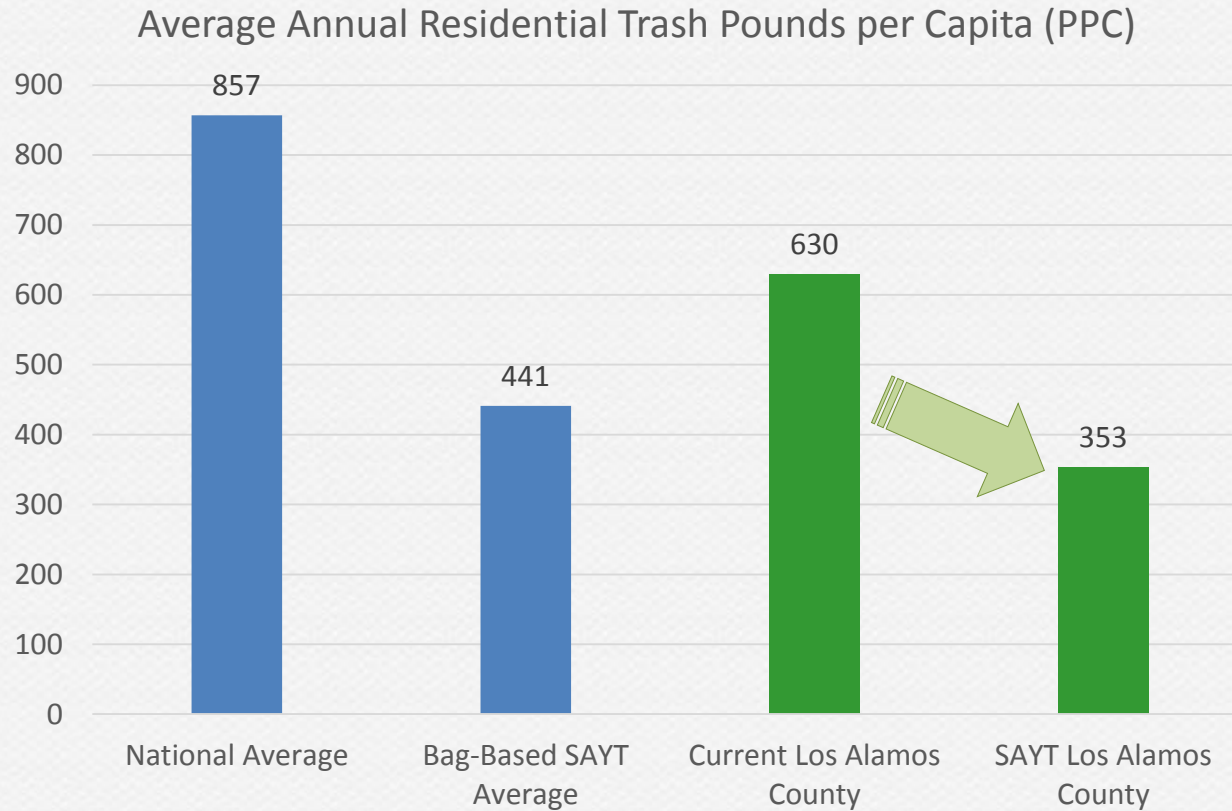
Note: Data provided by Heidi Rogers, Los Alamos County Environmental Sustainability Board Vice Chair

Projected Waste Stream Shift with SAYT



- Trash drops by 2,271 tons (44%)
- Recycling increases by 908 tons (33%)
- Total material handled drops by 1,363 tons (17%)
- Recycling Rate increases from 35% to 56%
- Net annual disposal savings are \$93,847 (accounts for reduced trash tip costs and increased recycling tip costs)

Projected Shift in Annual Pounds of Trash per Capita



Notes:

1. National Average calculation based on data from *Advancing Sustainable Materials Management: Facts and Figures 2013*, US EPA, June 2015
2. Bag-Based SAYT average is among all WasteZero Bag-Based SAYT programs

Projected Financial Impact on County



Standard Pricing Scenario

Retail Pricing Assumptions for Bags:

30-gallon Large Trash:	\$2.00
15-gallon "Tall Kitchen":	\$1.25

SAYT Results: Municipal Financial Impact (Cumulative)

	1 Yr	3 yrs	5 yrs	10 Yrs
# Bags Sold	322,435	968,757	1,617,019	3,246,202
Net Revenue	\$461,082	\$1,385,322	\$2,312,337	\$4,642,069
Trash Tip Svgs	\$107,474	\$322,905	\$538,983	\$1,082,020
Add'l Recycle Tip Svgs (Cost)	-\$13,627	-\$40,943	-\$68,341	-\$137,196
Net Benefit	\$554,929	\$1,667,284	\$2,782,979	\$5,586,893

Low Pricing Scenario

Retail Pricing Assumptions for Bags:

30-gallon Large Trash:	\$1.25
15-gallon "Tall Kitchen":	\$0.75

SAYT Results: Municipal Financial Impact (Cumulative)

	1 Yr	3 yrs	5 yrs	10 Yrs
# Bags Sold	322,435	968,757	1,617,019	3,246,202
Net Revenue	\$251,499	\$755,630	\$1,261,275	\$2,532,038
Trash Tip Svgs	\$107,474	\$322,905	\$538,983	\$1,082,020
Add'l Recycle Tip Svgs (Cost)	-\$13,627	-\$40,943	-\$68,341	-\$137,196
Net Benefit	\$345,346	\$1,037,592	\$1,731,917	\$3,476,862

Notes:

Revenue figures are net of WasteZero's projected fees
Assumed population growth is very low at 0.15% per year.

Projected Financial Impact on the Average Household



Standard Pricing Scenario

Retail Pricing Assumptions for Bags:

30-gallon Large Trash:	\$2.00
15-gallon "Tall Kitchen":	\$1.25

SAYT Results: Avg. per HH Financial Impact (Annual)	
Total Spend, PAYT Bags	\$548,140
Per HH Spend, PAYT Bags	\$80.02
<i>Per Month</i>	\$6.67
Less Regular Trash Bags	\$27.00
Net per HH Cost	\$53.02
<i>Per Month</i>	\$4.42
Avg. Net to City per HH	\$67.31
Avg. Disp. Svgs per HH	\$15.69
Avg. Net Impact per HH	\$83.00

Low Pricing Scenario

Retail Pricing Assumptions for Bags:

30-gallon Large Trash:	\$1.25
15-gallon "Tall Kitchen":	\$0.75

SAYT Results: Avg. per HH Financial Impact (Annual)	
Total Spend, PAYT Bags	\$338,557
Per HH Spend, PAYT Bags	\$49.42
<i>Per Month</i>	\$4.12
Less Regular Trash Bags	\$27.00
Net per HH Cost	\$22.42
<i>Per Month</i>	\$1.87
Avg. Net to City per HH	\$36.72
Avg. Disp. Svgs per HH	\$15.69
Avg. Net Impact per HH	\$52.40



Both pricing scenarios (Standard and Low) would:

- Provide annual net financial benefits to the County that would more than cover the current deficits in Environmental Services.
- Represent only a minimal extra monthly cost to residential households (on average):
 - Standard = \$6.67 per month (\$4.42 net cost, as HH would no longer have to buy regular trash bags)
 - Low = \$4.12 per month (\$1.87 net cost)
- Potentially enable the County to reduce the monthly fixed fee of \$25 while still covering its deficits:
 - Standard = Could reduce flat fee by ~\$3.85 per HH per month and still cover overall deficit
 - Low = Could reduce flat fee by ~\$1.33 per HH per month and still cover overall deficit

Next Steps

- Answer questions and collect your feedback.
- Determine level of interest.
- Identify other stakeholders with whom we should speak.

Thank You!

Craig Dunkley
VP, Consulting
cdunkley@wastezero.com

Steve Lisauskas
VP, Municipal Partnerships
slisauskas@wastezero.com



County of Los Alamos

Staff Report

March 15, 2018

Los Alamos, NM 87544
www.losalamosnm.us

Agenda No.: A

Index (Council Goals):

Presenters: Angelica Gurule

Legislative File: 10555-18

Title

Planning for Environmental Sustainability Board Upcoming Events

...Suggested Motion

N/A

Body

The ESB will discuss and plan for upcoming events.

April 21, 2018 - Earth Day at PEEC Nature Center 10am to 2pm

April 28, 2018 - Clean Up Los Alamos Day

May 4, 2018 - Decorate for Recycle Fashion Show 10am to 4pm

May 5, 2018 - Recycle Fashion Show 11am to 2pm

June 9, 2018 - Chamber Fest/Business & School Recycler of the Year

June 13, 2018 - Movie in the Park - Despicable Me 3, Urban Park 7pm

July 17, 2018 - Science Fest

September 2018 - Trash Audit

March 2019 - Trash Audit

Attachments

N/A



County of Los Alamos

Staff Report

March 15, 2018

Los Alamos, NM 87544
www.losalamosnm.us

Agenda No.: B

Index (Council Goals):

Presenters: Angelica Gurule

Legislative File: 10553-18

Title

February 2018 Residential Sustainability Report

Recommended Action Motion

N/A

Body

The ESB will review and discuss the February 2018 Residential Sustainability Report.

Attachments

H - Residential Sustainability Report - February 2018



Residential Sustainability Report

Service Period: February 2018

Recyclables Collected: 71.11 tons

Trash Collected: 345.25 tons

Compostable Materials Collected: 0.92 tons

Total Material Collected: 417.28 tons



LOS ALAMOS

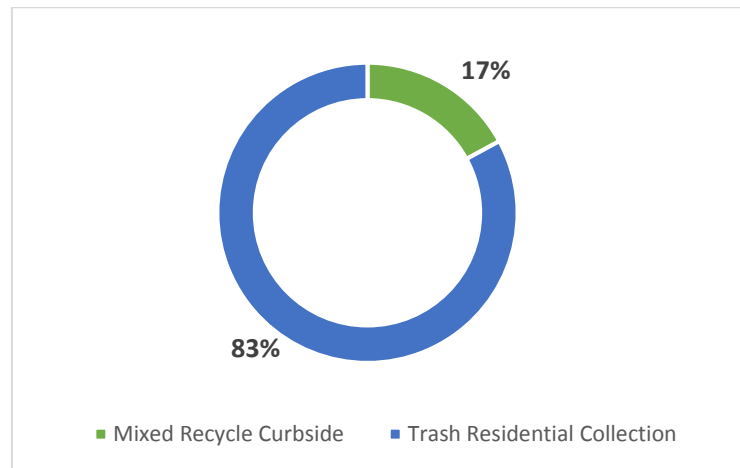
Monthly Collection Report

January Diversion Rate: **22%**

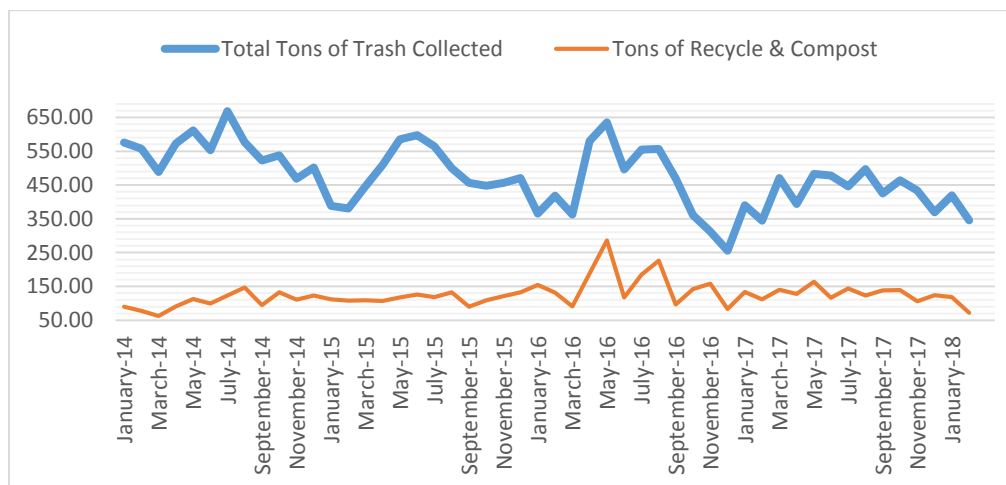
February Diversion Rate: **17%**

A 21% Decrease in Diversion

The *diversion rate* is the percent of materials recycled and composted.



Month by Month Recycling Comparison



Benefits of Recycling

Office Paper

Recycling one ton of office paper saves 17 trees, 7,000 gallons of water, 463 gallons of oil, 3 cubic yards of landfill space, and enough energy to heat an average home for six months.

Further, manufacturing one ton of office paper using recycled paper stock can save 3,000 to 4,000 kilowatt hours versus making that amount using virgin materials.

