



LOS ALAMOS

County of Los Alamos

1000 Central Avenue
Los Alamos, NM 87544

BCC Agenda

Parks and Recreation Board

Stephanie Nakhleh, Chair; Dana Dattalbaum, Vice-Chair; Robbie Harris; Dina Pesenson; Ramiro Pereyra; Donald Ulrich; and Dianne Wilburn, Members

Thursday, May 10, 2018

5:30 PM

1000 Central Avenue
Room 110

1. CALL TO ORDER

- A. [10746-18](#) Approval of Minutes from the April 12, 2018 meeting

Recommendation: I move that the Board approve the attached minutes

Presenters: Stephanie Nakhleh

Attachments: [A - April 2018 Meeting Minutes](#)

2. STAFF AND OTHER ATTENDEES:

Others in attendance included

3. PUBLIC COMMENT

This section of the agenda is reserved for comments from the public on items that are not otherwise included in this agenda.

Please Limit Public Comment to 3 Minutes.

4. BUSINESS

- A. **10749-18** New Board Member Introduction

Presenters: Stephanie Nakhleh

- B. [10773-18](#) Subcommittee Application

Recommendation: I move that the Board approve the following Subcommittee Application

Presenters: Stephanie Nakhleh

Attachments: [A - Amy Rogers - Open Space Advisory Subcommittee \(OSAS\)](#)

- C. [10748-18](#) "Flow Trail" Project Update

Presenters: Eric Peterson

- D. [10776-18](#) Discussion Regarding Modification of Overlook Ballfield Paint Colors

Presenters: Jeff Humpton and Brian Brogan

- E. [10757-18](#) CIP Projects Update

Presenters: Brian Brogan and Wayne Kohlrust

Attachments: [A - Ice Rink Shade Study](#)

- F. [10789-18](#) Discussion About a 37th Street Tot Lot Workshop

Recommendation: I move that the Board approve [date] as the date for the upcoming Tot Lot Workshop.

Presenters: Brian Brogan

- G. [10750-18](#) Listening Session - Parks Rules Pertaining to Dogs

Presenters: Jeff Humpton and Brian Brogan

5. STAFF COMMUNICATIONS

- A. [10751-18](#) Parks, Recreation, Open Space Program Report

Attachments: [A - PROS Program Report](#)

- B. [10752-18](#) Aquatic Center Advisory Subcommittee Report

Presenters: Parks and Recreation Board

- C. [10753-18](#) Ice Rink & Recreation Advisory Subcommittee Report

Presenters: Parks and Recreation Board

- D. [10754-18](#) Golf Course Advisory Subcommittee Report

Presenters: Parks and Recreation Board

- E. [10755-18](#) Open Space Advisory Subcommittee Report

Presenters: Stephanie Nakhleh

6. PUBLIC COMMENT

7. INFORMATIONAL ITEMS

- A. [10756-18](#) Council Liaison Report

Presenters: Pete Sheehey

8. PREVIEW OF NEXT MEETING - June 14, 2018 - Council Chambers

9. ADJOURNMENT

If you are an individual with a disability who is in need of a reader, amplifier, qualified sign language interpreter, or any other form of auxiliary aid or service to attend or participate in the hearing or meeting, please contact the County Human Resources Division at 505-662-8040 at least one week prior to the meeting or as soon as possible.

Public documents, including the agenda and minutes can be provided in various accessible formats. Please contact the personnel in the Recreation Division at 505-663-1781 if a summary or other type of accessible format is needed.



County of Los Alamos

Staff Report

May 10, 2018

Los Alamos, NM 87544
www.losalamosnm.us

Agenda No.: A.

Index (Council Goals):

Presenters: Stephanie Nakhleh

Legislative File: 10746-18

Title

Approval of Minutes from the April 12, 2018 meeting

Recommended Action

I move that the Board approve the attached minutes

Body

The April 12, 2018 Minutes are ready for consideration and approval

Attachments

A - April 12, 2018 Minutes



County of Los Alamos

BCC Meeting Minutes

Parks and Recreation Board

1000 Central Avenue
Los Alamos, NM 87544

*Stephanie Nakhleh, Chair; Dana Dattalbaum, Vice-Chair; Robbie Harris; Dina Pesenson;
Ramiro Pereyra; Donald Ulrich; and Dianne Wilburn, Members*

Thursday, April 12, 2018

5:30 PM

1000 Central Avenue
Room 110

1. CALL TO ORDER

- A. [10615-18](#) Approval of Minutes from the March 8, 2018 meeting

Presenters: Stephanie Nakhleh

Attachments: [A - March 8, 2018 Minutes](#)

A motion was made by Member Pesenson and seconded by Member Harris that the Minutes be approved as presented. The motion was passed by a unanimous vote of 6-0.

2. PUBLIC COMMENT

No public comment was given.

3. BUSINESS

- A. **10616-18** New Board Member Introductions

Presenters: Christopher Wilson

New and existing Board Members introduced themselves.

- B **10677-18** Subcommittee Liaisons

Presenters: Stephanie Nakhleh

Board Members assessed the current subcommittee roles and voted on role assignments.

Member Dattalbaum motioned to approve this set of subcommittee liaisons:

1. GCAS - Dana Dattalbaum
2. OSAS - Donald Ulrich
3. IRRAS - Dina Pesenson
4. ACAS - Trey Ramiro

Member Ramiro seconded the motion. The motion passed with a unanimous approval of 6-0.

C. [10664-18](#) "Flow Trail" Project Update

Presenters: Eric Peterson

Chris Wilson provided an update to the Board on the Flow Trail Project. Discussion was held among the Board Members.

D. [10617-18](#) CIP Projects Update

Presenters: Christopher Wilson

Chris Wilson updated the Board on the CIP Projects, and thanked Public Works and the Project Management team

E. [10670-18](#) Discussion Regarding Modification of Overlook Ballfield Paint Colors

Presenters: Christopher Wilson

Attachments: [A - Overlook Park Colors and Windscreen Example](#)

Chris Wilson and Jeff Humpton updated the Board on a request from Little League to modify the current colors at Overlook Park to the Los Alamos High School Hilltopper colors. Discussion was held by the Board.

4. STAFF COMMUNICATIONS

A. [10619-18](#) Parks, Recreation, Open Space Program Report

Presenters: Christopher Wilson

Attachments: [A - PROS Program Report](#)

Chris Wilson provided the PROS Report.

B. [10623-18](#) Open Space Advisory Subcommittee Report

Presenters: Stephanie Nakhleh

Chair Nakhleh provided the Open Space Advisory Subcommittee Report.

C. [10620-18](#) Aquatic Center Advisory Subcommittee Report

Presenters: Christopher Wilson

Chris Wilson provided the Aquatic Center Advisory Subcommittee Report.

D. [10621-18](#) Ice Rink & Recreation Advisory Subcommittee Report

Presenters: Dina Pesenson

Member Pesenson updated the Board on the IRRAS meeting. Discussion was held by the Board.

E. [10622-18](#) Golf Course Advisory Subcommittee Report

Presenters: Dana Dattelbaum

Member Dattelbaum presented the Golf Course Advisory Subcommittee Report.

5. **PUBLIC COMMENT**

No public comment was given.

6. **INFORMATIONAL ITEMS**

A. [10624-18](#) Council Liaison Report

Presenters: Pete Sheehey

Councilor Sheehey presented the Council Liaison Report.

7. **PREVIEW OF NEXT MEETING - May 10, 2018**

8. **ADJOURNMENT**

Motion was made to adjourn the meeting by Member Pesenson, seconded by Member Ramiro. Motion passed by a unanimous vote of 5-0 (Member Dattelbaum left early).

If you are an individual with a disability who is in need of a reader, amplifier, qualified sign language interpreter, or any other form of auxiliary aid or service to attend or participate in the hearing or meeting, please contact the County Human Resources Division at 505-662-8040 at least one week prior to the meeting or as soon as possible.

Public documents, including the agenda and minutes can be provided in various accessible formats. Please contact the personnel in the Recreation Division at 505-663-1781 if a summary or other type of accessible format is needed.



County of Los Alamos

Staff Report

May 10, 2018

Los Alamos, NM 87544
www.losalamosnm.us

Agenda No.: A.

Index (Council Goals):

Presenters: Stephanie Nakhleh

Legislative File: 10749-18

Title

New Board Member Introduction

Body

Member Nakhleh will introduce Dianne Wilburn, the new Board Member.



County of Los Alamos

Staff Report

May 10, 2018

Los Alamos, NM 87544
www.losalamosnm.us

Agenda No.: B.

Index (Council Goals):

Presenters: Stephanie Nakhleh

Legislative File: 10773-18

Title

Subcommittee Application

Recommended Action

I move that the Board approve the following Subcommittee Application

..Attachment

A - Amy Rogers - Open Space Advisory Subcommittee (OSAS)

Parks Office Use Only:

Date Appointed by Parks & Recreation
Board _____



Parks, Recreation and Open Space

**LOS ALAMOS COUNTY
PARKS AND RECREATION BOARD**

**APPLICATION
Open Space Advisory Subcommittee**

Please be aware that as a public entity, the County of Los Alamos is obligated to furnish this information to the media, if so requested.

Name: Amy Rogers Date: 1/25/2018

Address: _____

Home Phone: _____ Work Phone: N/A

E-mail: _____

☒ **First Term**

☐ **Second Term**

PLEASE NOTE:

If you reside outside Los Alamos County, you are not eligible for appointment.

Briefly state your reason(s) for wanting to serve on this committee and please give any background information and/or prior experience pertinent to this position.

I would like to serve on this committee in order to help gather public input and to participate in providing suggestions to the Parks and Recreation Board concerning policy issues related to Open Space and Trails programs and resources. I am a hiker, equestrian and snowshoer. I use the open space and trails on a consistent and frequent basis. I have also attended several recent OSAC meetings and would like to participate in the OSAC in a more active capacity. I have also been encouraged to participate by members of the equestrian community in order to enhance communication between the OSAC and local equestrians.

Briefly state your understanding of the key issue(s) facing this subcommittee.

Key issues facing this subcommittee include: the review of the County Trails Management Plan in order to develop recommendations for additions, deletions and realignments to the County Trail Network; assisting in safeguarding the preservation of access to the County Trail Network; developing recommendations with reference to improvements and maintenance to facilities, trails, and/or equipment.

101 Camino Entrada, Building 5
Los Alamos, NM 87544
P 505.662.8159 F 505.661.2690
losalamosnm.us/rec



County of Los Alamos

Staff Report

May 10, 2018

Los Alamos, NM 87544
www.losalamosnm.us

Agenda No.: C.

Index (Council Goals):

Presenters: Eric Peterson

Legislative File: 10748-18

Title

"Flow Trail" Project Update

Body

Eric Peterson, Open Space Specialist, will present the update on the Flow Trail Project. This update will include the contract process and the public process after the contract is awarded.



County of Los Alamos

Staff Report

May 10, 2018

Los Alamos, NM 87544
www.losalamosnm.us

Agenda No.: D.

Index (Council Goals):

Presenters: Jeff Humpton and Brian Brogan

Legislative File: 10776-18

Title

Discussion Regarding Modification of Overlook Ballfield Paint Colors

Body

During the onsite Workshop, held at Overlook Park as part of the Ballfield Assessment, a comment was made about changing colors from blue and gray to yellow and green. A user group has now formally made this request to change to the high school colors of yellow and forest green.



County of Los Alamos

Staff Report

May 10, 2018

Los Alamos, NM 87544
www.losalamosnm.us

Agenda No.: E.

Index (Council Goals):

Presenters: Brian Brogan and Wayne Kohlrust

Legislative File: 10757-18

Title

CIP Projects Update

Body

Wayne Kohlrust will present an update to the on the Ice Rink Shade Study (Attachment A), and Brian Brogan will present an update on the remaining CIP Projects.

- Ice Rink Improvement
- Pinon Park Splash Pad
- Golf Course Irrigation System
- Kiddie Pool Project

Attachments

A - Ice Rink Shade Study

LOS ALAMOS COUNTY ICE RINK - SHADE STUDY

March 29, 2018

L:\16-0093.001LosAlamosBondProjects\Design\ExistingFacilitiesProjects\IceRinkImprovements\ShadeStudy1.4.2018

PURPOSE

The open air ice rink in Los Alamos County is a cherished facility that gets heavy use during the winter months. Partly due to the lack of shade, the duration of the ice skating season and the quality of the ice is less than optimal, particularly for hockey team schedules. Los Alamos County desires to cover the ice rink to help extend the season from November 15 - March 15.

To help quantify the impact of solar exposure on the ice rink, Los Alamos County has conducted a shade study to assess the potential to shade the ice with various shade structures. The following is a preliminary study of the average solar exposure of the Los Alamos Ice Rink during the winter season. The study tests a number of different shade structure concepts to determine which structure would provide the best coverage for the smallest budget.

FINDINGS:

- Without a shade structure to cover the ice, the ice rink receives on average between 4 and 10 hours of direct sunlight during the winter months.
- This study focuses on the use of prefabricated or custom tensile fabric structures. Tensile fabric structures use light-weight but durable covers that are stretched over metal structures. Prefabricated structures come at lower price points but limit any customizing of the design.
- The most basic shade structure, Option 1, is the most cost-effective option. This option, however, will not provide maximum protection from the sun. This concept also eliminates 'open air' character of the ice rink.
- The prefabricated Option 2b has a higher price point but provides more shade and maintains some of the 'open air' character. This option may provide the best combination of sun protection, while also allowing some of the ice rink's unique character to be preserved.

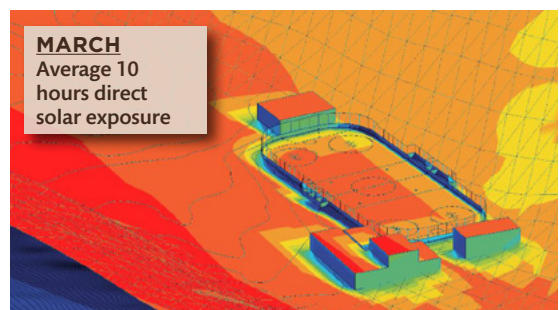
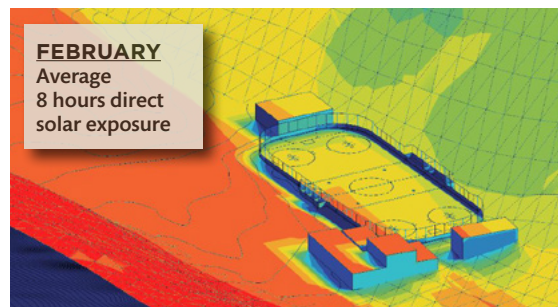
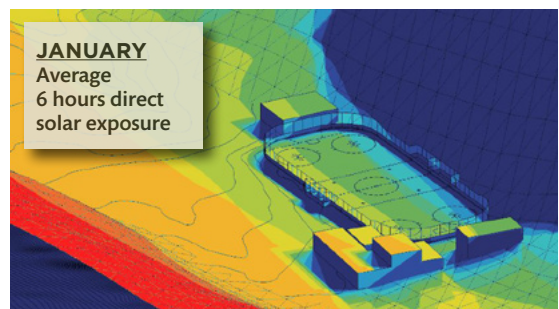
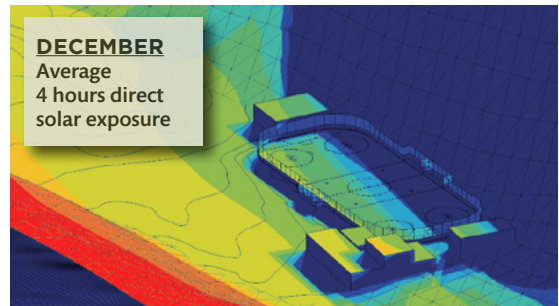
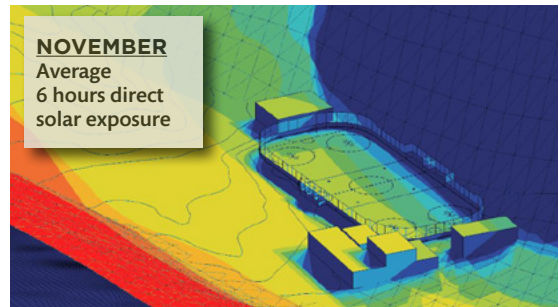
ICE RINK SOLAR EXPOSURE

Graphics to the right illustrate the average daily exposure to sunlight during a month.

The colors indicate how much sunlight each specific area of the study site is exposed to on an average day during that month.

DISCLAIMER

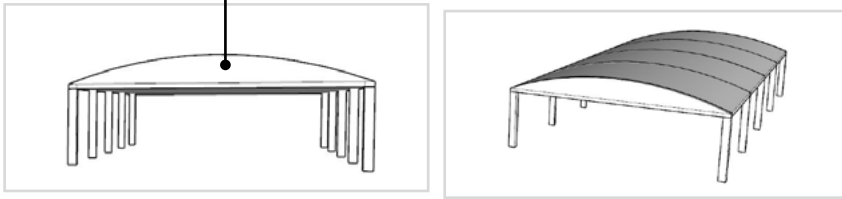
This study examines a number of shade structure concepts accompanied by an opinion of probable cost to construct the structures. All costs are based on preliminary concepts and do not include lighting, site development or soft costs and need to be adjusted as the structure is designed.



The colors on the images above indicate the average sun exposure for the given month



Full-cover shade structure,
with exposed sides



OPTION 1:

FULL-COVER SHADE STRUCTURE

This shade structure covers the entire ice rink. The structure measures approximately 200 x 100 feet, and 37 feet in height.

As the study indicates, in February and March, the southeastern corner of the ice rink would receive some sunlight during February and March.

OPINION OF PROBABLE COST

Type of Structure	Cost/ Sq. ft.	Total Area (sq. ft.)	Cost
Prefabricated Structure	\$25-\$28	20,000	\$500,000 - \$560,000
Custom Structure	\$110-\$125	20,000	\$2,200,000 - \$2,500,000

PROS AND CONS

Prefabricated Structure

Pros

- Straight forward concept; can utilize
- Prefabricated "off the shelf" product.
- Reduced construction time
- Least expensive option

Cons

- Ice rink would lose 'open air' character
- Not customizable
- Reduced protection from sun

Custom Structure

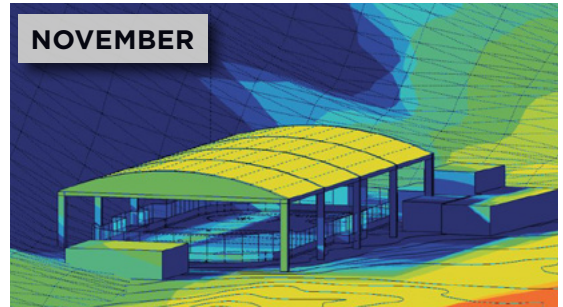
Pros

- Customizable, able to respond to unique site conditions
- Nicer design

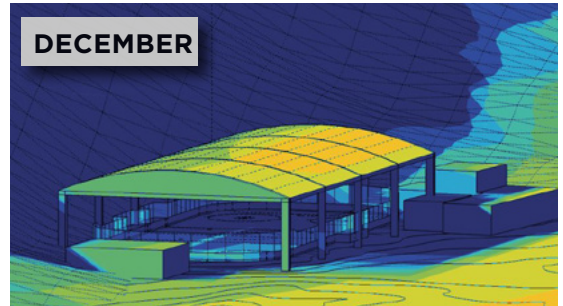
Cons

- Ice rink would lose 'open air' character
- More expensive
- Reduced protection from sun (no side panels to block sun)

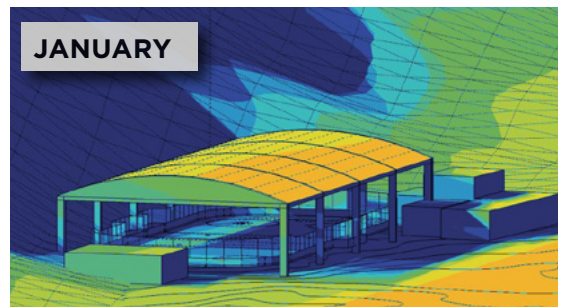
NOVEMBER



DECEMBER



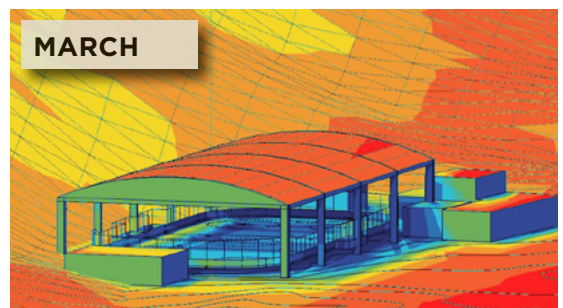
JANUARY



FEBRUARY



MARCH



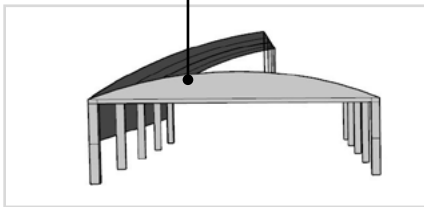
The colors on the images above indicate the average sun exposure for the given month



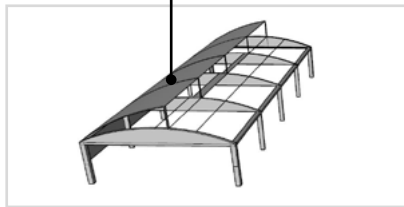
March 29, 2018

L:\16-0093.001\LosAlamosBondProjects\Design\ExistingFacilitiesProjects\IceRinkImprovements\ShadeStudy\1.4.2018

Side panels for additional protection from the sun



Cantilevered partial shade structure



OPTION 2A:

PARTIALLY COVERED SHADE STRUCTURE

This shade structure covers the ice rink partially, leaving a portion open to maintain some of the 'open air' character. The structure measures approximately 191 x 100 feet, and approximately 55 feet in height.

Little sun exposure is experienced during February and March

OPINION OF PROBABLE COST

Type of Structure	Cost/ Sq. ft.	Total Area (sq. ft.)	Cost
Prefabricated Structure	\$30-\$38	20,000	\$600,000 - \$760,000
Custom Structure	\$110-\$125	20,000	\$2,200,000 - \$2,500,000

PROS AND CONS

Prefabricated Structure

Pros

- Reduced construction time
- Less expensive
- Partially maintains 'open air character'

Cons

- Not customizable
- Added cost through increased trussing

Custom Structure

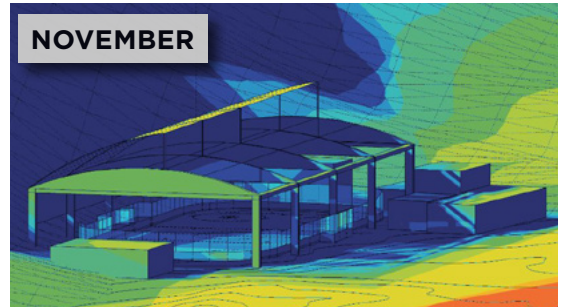
Pros

- Customizable, able to respond to unique site conditions
- Nicer design
- Partially maintains 'open air character'

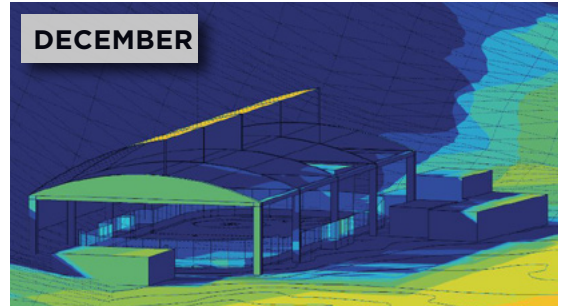
Cons

- More expensive

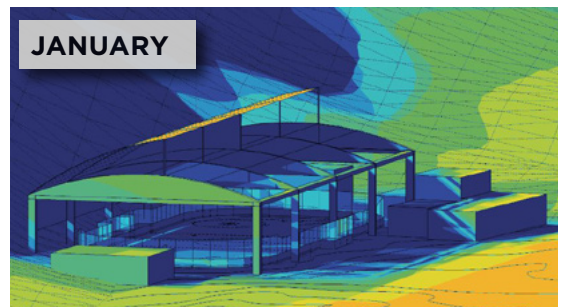
NOVEMBER



DECEMBER



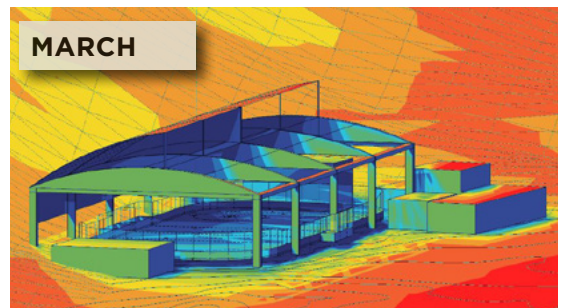
JANUARY



FEBRUARY



MARCH



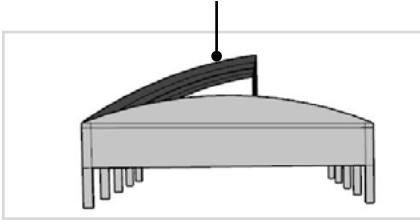
The colors on the images above indicate the average sun exposure for the given month



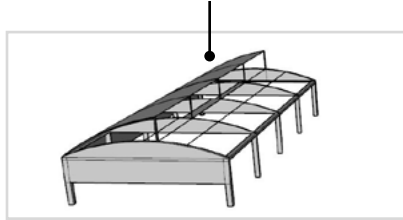
March 29, 2018

L:\16-0093.001\LosAlamosBondProjects\Design\ExistingFacilitiesProjects\IceRinkImprovements\ShadeStudy\1.4.2018

Additional side panels for additional protection from the sun



Cantilevered partial shade structure



OPTION 2B:

PARTIALLY COVERED SHADE STRUCTURE

This shade structure covers the ice rink partially, leaving a portion open to maintain some of the 'open air' character. The structure measures approximately 191 x 100 feet, and approximately 55 feet in height.

For this version, a side panel on the east was added to further protect the ice rink from sun penetration during the months of February and March.

This cover provides more shade, while maintaining even more of the 'open air' character.

OPINION OF PROBABLE COST

Type of Structure	Cost/ Sq. ft.	Total Area (sq. ft.)	Cost
Prefabricated structure	\$35-\$45	20,000	\$700,000 - \$900,000
Custom Structure	\$110-\$125	20,000	\$2,200,000 - \$2,500,000

PROS AND CONS

Prefabricated Structure

Pros

- Reduced construction time
- Partially maintains 'open air' character
- Increased protection from sun

Cons

- Not customizable
- Added cost through increased trussing
- More expensive than standard prefabricated option

Custom Structure

Pros

- Customizable, able to respond to unique site conditions
- Nicer design
- Partially maintains 'open air' character

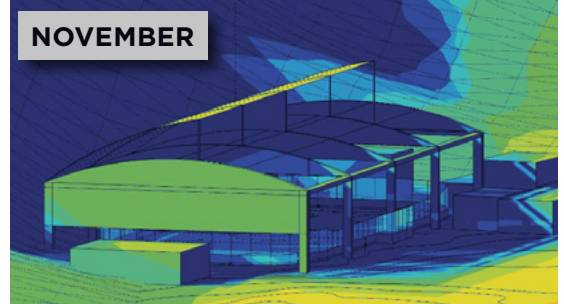
Cons

- More expensive

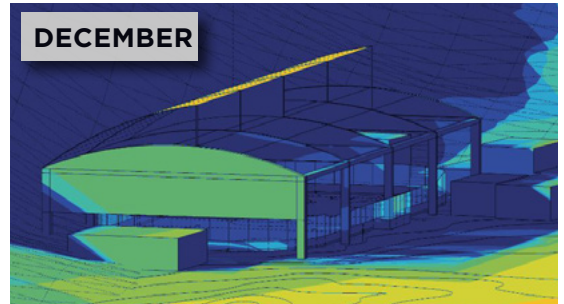
March 29, 2018

L:\16-0093.001\LosAlamosBondProjects\Design\ExistingFacilitiesProjects\IceRinkImprovements\ShadeStudy1.4.2018

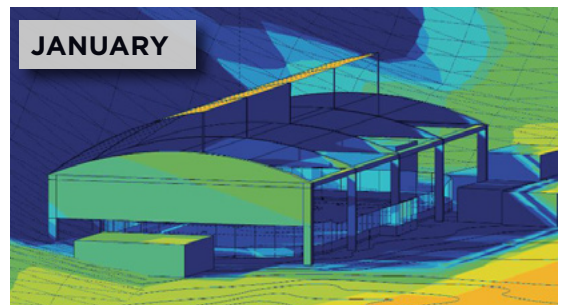
NOVEMBER



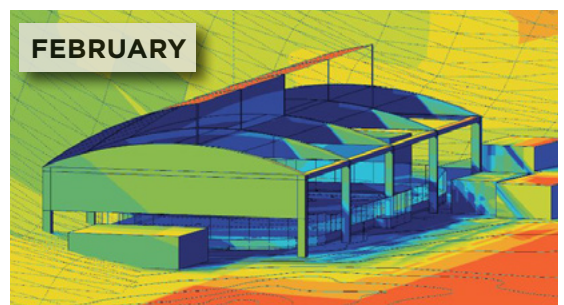
DECEMBER



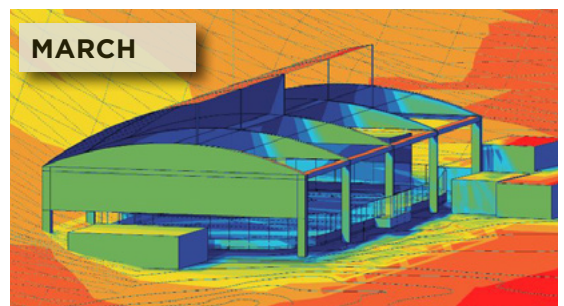
JANUARY



FEBRUARY



MARCH



The colors on the images above indicate the average sun exposure for the given month



OPTION 3:**Retractable shade roof structure**

This option considers a retractable roof option. The retractable roof would allow the user to adjust the roof opening and respond to different weather conditions. This option was not studied to the same level of detail as the other options. The shading impact would be roughly equivalent to Option 1.

Opinion of Probable Cost

Type of Structure	Cost/ Sq. ft.	Total Area (sq. ft.)	Cost
Retractable Roof	\$150-\$200	20,000	\$3,000,000 - \$4,000,000

PROS AND CONS**Retractable Roof Structure****Pros**

- Maintains 'open air' character

**Cons**

- Most expensive option
- Increased maintenance costs



County of Los Alamos

Staff Report

May 10, 2018

Los Alamos, NM 87544
www.losalamosnm.us

Agenda No.: F.

Index (Council Goals):

Presenters: Brian Brogan

Legislative File: 10789-18

Title

Discussion About a 37th Street Tot Lot Workshop

..Recommended Motion

I move that the Board approve [date] as the date for the upcoming Tot Lot Workshop.

Body

Based on public input, a workshop is being requested by the public to discuss improvements prior to construction. The Parks & Recreation Board will determine a date for this workshop.



County of Los Alamos

Staff Report

May 10, 2018

Los Alamos, NM 87544
www.losalamosnm.us

Agenda No.: G.

Index (Council Goals):

Presenters: Jeff Humpton and Brian Brogan

Legislative File: 10750-18

Title

Listening Session - Parks Rules Pertaining to Dogs

Body

In June of 2015, the Parks and Recreation Board tackled the multi-faceted discussion of park rules pertaining to dogs. The discussion addressed concerns regarding the Animal Control Ordinance and dogs off leash in County Parks or athletic fields. In addition, an Open Forum discussion on "Rules for Dogs in County Parks" was also made available to take public comment.

A July listening session reviewed present Animal Control Ordinance in relation to parks, athletic fields, trails, dog parks, dog training fields and voice and sight control areas. The discussion and Open Forum input indicated that Los Alamos citizens want to be dog friendly and to share County parks, fields and trails pursuant to a common vision as outlined by code.

In August, the Parks and Recreation Board concluded that the public supports remaining a dog friendly community within our existing rules and regulations. Alternatives exist to improve this community vision via education, enforcement and facility improvements. Based on public comment and feedback, five initial recommendations are presented below.

1. New signage to clarify Dog Training Zones, Dog Training Fields and Voice and Sight Control areas as they now exist, including the informational phone number for the Parks Division and the Dispatch phone number for improved customer service.
2. The "No Dogs on Playing Field" signs on Overlook sports fields will be removed and replaced with park entry signage that enforces the leash law message throughout the Overlook Park area.
3. Designation of Dara Jones Soccer Field as a "Dog Training Field" that is scheduled for group events via the Parks Field User meetings will continue. The Westside Pedestrian gate will be removed so that unofficial dog park activities do not occur.
4. Further Los Alamos Dog Obedience Club (LADOC) involvement reflecting the group's contractual obligations to the County for providing their services of obedience training classes, workshops along with information and guidance to dog owners of the area. Together the County staff and LADOC will work to increase the awareness of the rules and regulations and how Los Alamos County can truly be a dog friendly community.
5. Dog Parks
 - o Parks staff will continue their maintenance efforts in the dog parks paying close attention to the items brought forward through this public process.

-
- o The North Mesa Dog Park will be reviewed to see when irrigation and seeding efforts can begin.
 - o Enlargement of the East Park, Dog Park along with improved access will be reviewed and undertaken as time and budgets allow.
 - o Further community planning will need to be done for additional dog park development while building on neighborhood activities to date.

It was also recommended that the Board conduct periodic listening sessions, to hear from residents on a review of the rules and regulations. This formal opportunity would provide feedback for further adjustments or refinements needed to continue to balance the needs of dog owners and park/field users. This agenda item fulfills that recommendation while providing an opportunity to evaluate how multi-use maximizes varied public use of our parks and open space amenities.



County of Los Alamos

Staff Report

May 10, 2018

Los Alamos, NM 87544
www.losalamosnm.us

Agenda No.: A.

Index (Council Goals):

Presenters:

Legislative File: 10751-18

Title

Parks, Recreation, Open Space Program Report

Body

Brian Brogan will present the PROS Program Report to the Board

Attachments

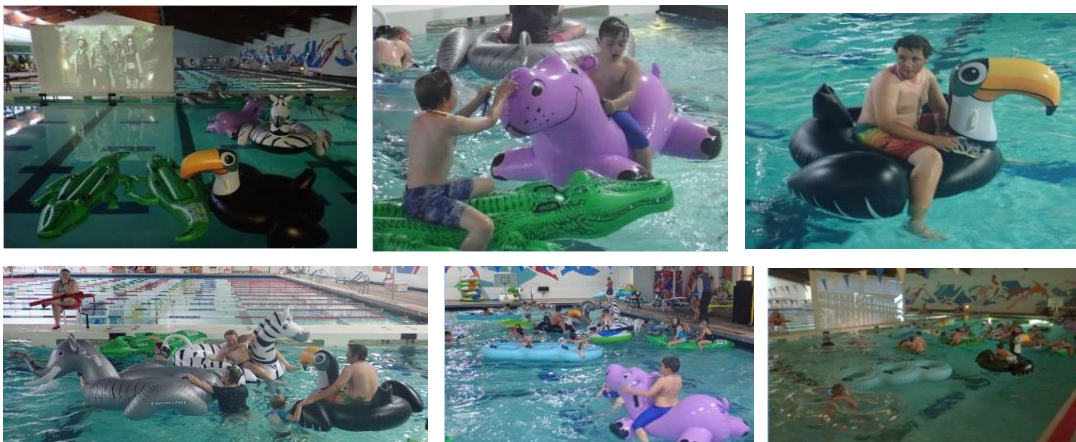
A - PROS Program Report

Parks, Recreation, Open Space Division
April 2018

Aquatics

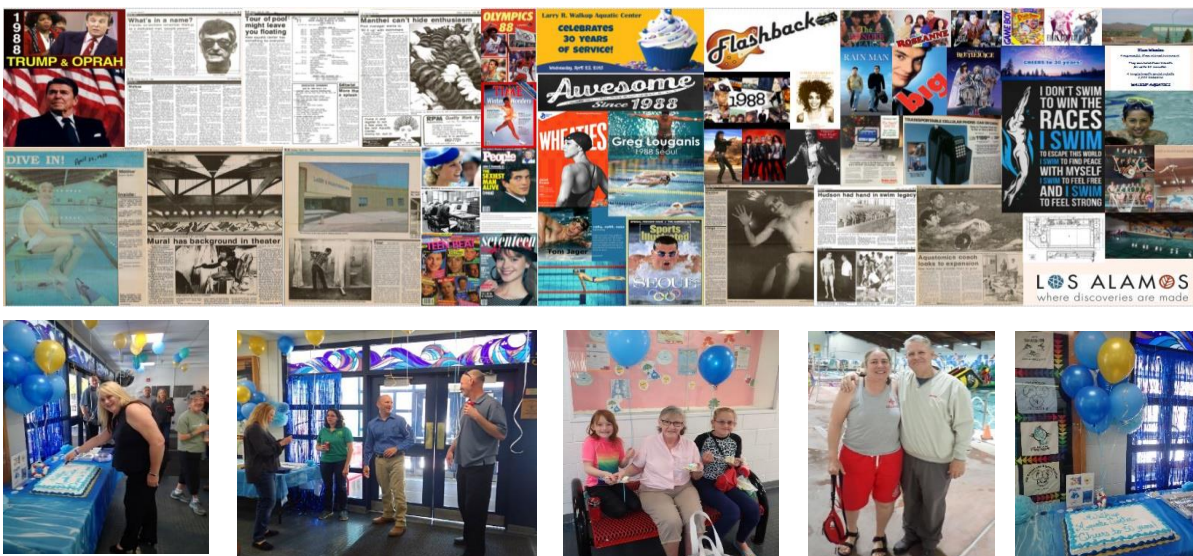
Dive In Movie – April 13th, 55 participants

The Aquatic Center showed the movie, Jumanji: Welcome to the Jungle, on the big screen while families enjoyed the movie the cast of inflatable animals at times got carried away and got sent to timeout for the ruckus behavior. Inner tubes, popcorn, drinks and snacks were provided.



Walkup Aquatic Center – Cheers to 30 Years! April 25th, 405 participants

The Walkup Aquatic Center celebrated its 30th year in service. 405 people participated throughout the day, which included cake, refreshments, and commemorative wristbands were provided for all who attended. What a joy to flashback to 1988 and share stories with each other. Cheers to 30 years and to 30 more years of new memories.



Easter Egg Hunt at Los Alamos Golf Course – April 1, 2018, 850 participants



With the unseasonable warm weather, the golf staff has been able to get out early and start aerating the greens to get the best possible turf conditions for the season



Los Alamos High School JV Tournament – April 4, 2018, 61 players

Varsity team Spring Invitational – April 16, 2018, 96 players. The Varsity team held its Spring Invitational. Schools came from as far north as Raton and as far east as Tucumcari.



Opening Breakfast Tournament – April 8, 2018, 36 players

2018 Opening Breakfast Tournament					
Brad King Janice Allen	Jennifer King Michelle Della	145	119	Jen Han Kring Ortega	Chris Ortega Karen Kue
Anna Haverfeger Cedric Griggs	Lynne Taylor Alma Sandrud	163	155	Neil Thompson Mark Sandrud	Don Brack Edna Sandrud
Kerry Coffelt Ken Kach	Lori Coffelt Sue Kach	166	125	Mike Tippitt Stacy Hunter	Tony Lee Patricia Berger
Michael Irving Doug Hemphill	Andye Treidler Jeff Brown	154	110	Scott Rugh Diane Peters	Mark Gilling Terry Kuhn
Leana Christ Doug Hubers	Jim Brown Brian Brown	165	127		

US Kids Golf Program – in progress. Local youth playing cow pasture pool. Participants in the program play games to learn basic golf skills.



Registration for National Jelly Bean Day – drawing held on April 22, 2018. Local resident taking a guess as to how many jelly beans are in the jar.



Open Space

Earth Day Volunteer Project – April 22, 2018, 50+ volunteers

In collaboration with Los Alamos Nature Center, 50+ volunteers helped removal invasive Siberian Elm trees, gather trash scattered by bears and help restore a short cut trail that was causing erosion issues.



Recreation

National Jelly Bean Day – April 22nd, 2018, ~ 700 participants

The jelly bean contests were a huge success as participants submitted entries at the Aquatic Center, Golf Course, Social Services, White Rock Branch and Mesa Public Libraries, and the Fuller Lodge Art Center. Winners got to choose the jar of jelly beans, a private swim lesson, private golf lessons, or a Beanboozled jelly bean game.



New Mexico Recreation and Park Association (NMRPA) State Award Winners

At the annual NMRPA State Conference from April 11 – 13, 2018, the Parks, Recreation and Open Space Division received two awards:

Ed Chismar Young Professional of the Year – Open Space Specialist Eric Peterson

Eric Peterson was recognized by his peers in the industry as a recognized leader and advocate who has demonstrated outstanding efforts to forward parks and recreation through educating and activating the public in our community and at the state and national level.



Parks Design Award – White Rock Visitor Center Demonstration Garden

This project was headed-up by Los Alamos County's Green Team and is a shining example of volunteers coming together to create beauty out of a weed-infested lot that highlights environmental stewardship, arts and culture, and enhances the quality of life in our community.



Ice Rink

Los Alamos Derby Dames – Practices began April 1st; 1st Bout on April 14th

Women's Roller Derby practices at the Ice Rink on Sunday, Tuesday and Thursday nights. They kicked off their season with a bout against Front Range Roller Derby from Denver, CO.



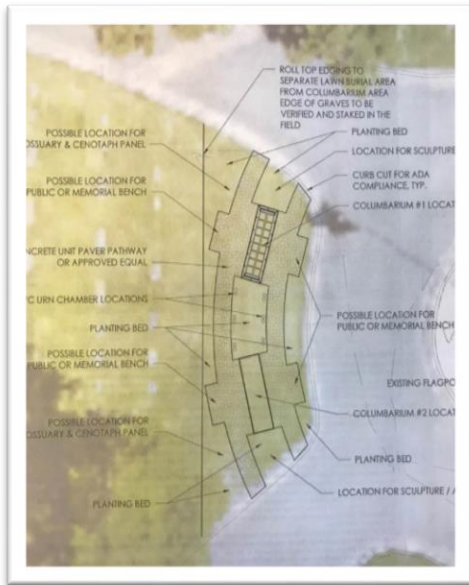
Los Alamos Cherry Bombs – Practices began April 2nd; 1st Mini-Bout on April 14th

Youth Roller Derby practices at the Ice Rink on Monday and Friday nights. They kicked off their season with a mini-bout against the Rocky Mountain Roller Punks from Denver, CO.



Parks

The Parks Division has started construction of the first phase of the Columbarium at Guaje Pines Cemetery. The columbarium is for placement of cremated remains in above ground storage which is a new addition for our cemetery. We have removed the sod, moved existing irrigation and are currently digging for the columbarium footing and the ADA access. The concrete columbarium will be delivered in the following weeks from the manufacturers in Monroe, Washington. The Parks Division will follow up with landscaping to compliment the new addition to the cemetery.





County of Los Alamos

Staff Report

May 10, 2018

Los Alamos, NM 87544
www.losalamosnm.us

Agenda No.: B.

Index (Council Goals):

Presenters: Parks and Recreation Board

Legislative File: 10752-18

Title

Aquatic Center Advisory Subcommittee Report

Body

Member Ramiro will present report to the Board



County of Los Alamos

Staff Report

May 10, 2018

Los Alamos, NM 87544
www.losalamosnm.us

Agenda No.: C.

Index (Council Goals):

Presenters: Parks and Recreation Board

Legislative File: 10753-18

Title

Ice Rink & Recreation Advisory Subcommittee Report

Body

Member Pesenson will present report to the Board



County of Los Alamos

Staff Report

May 10, 2018

Los Alamos, NM 87544
www.losalamosnm.us

Agenda No.: D.

Index (Council Goals):

Presenters: Parks and Recreation Board

Legislative File: 10754-18

Title

Golf Course Advisory Subcommittee Report

Body

Member Dattelbaum will present report to the Board



County of Los Alamos

Staff Report

May 10, 2018

Los Alamos, NM 87544
www.losalamosnm.us

Agenda No.: E.

Index (Council Goals):

Presenters: Stephanie Nakhleh

Legislative File: 10755-18

Title

Open Space Advisory Subcommittee Report

Body

Chair Nakhleh will present to the Board.



County of Los Alamos

Staff Report

May 10, 2018

Los Alamos, NM 87544
www.losalamosnm.us

Agenda No.: A.

Index (Council Goals):

Presenters: Pete Sheehey

Legislative File: 10756-18

Title

Council Liaison Report

Body

Councilor Sheehey will present report to the Board.