

# **In the Works....**

## **Public Works Update – July 2016**

### **Administration Division**

#### **Transportation Board**

The Transportation Board has two vacancies and recruitment efforts are currently underway. We would like to give a special thank you to Mr. Wayne Harding for serving on the board.

### **Airport Division**

#### **Airport Landfill Remediation**



The DOE has completed the remediation of the landfill at the airport. The County is considering options regarding the construction of the hangars on the concrete pad that was constructed as part of the remediation effort. The timeline for the construction of the hangars will depend on who is building the hangars and the funding sources for the construction.

#### **Runway Maintenance Project**

Two bids were received for the crack sealing, seal coating and remarking of the runway and north and south aircraft parking aprons. There were two alternates to the bids. One alternate was for completing the seal coating of all three areas and the second alternate was to perform work only on the runway. Which alternate will be awarded will depend on the availability of FAA funding for the project. We are currently awaiting word from the FAA regarding which alternate they will fund and when the grant application should be submitted. 90 % of the funding for the project will be provided by a grant from the Federal Aviation Administration. Another 5% of the funding will be provided through a grant from the NMDOT – Aviation Division and the final 5% will be the responsibility of the County.

#### **West Area Development**

The Airport recently received an environmental Categorical Exclusion (CATEX) from the FAA for the development of the west end of the airport as depicted on the Airport Master Plan. This is the first step in being able to move forward in the future with the construction of new hangars on the west end of the airport. The construction of these hangars will be dependent upon demand for the additional hangar space and there is no formal timeline for this development at this time. The CATEX is effective for three years, which means that some part of the development project must be started within the next three years in order for the CATEX to remain in effect. If no action is taken within the next three years the CATEX will expire and the airport will need to refile for another CATEX with the FAA.

## Custodial Division

The Custodial Division supported 188 events during the month of July which ranged from weddings to birthday parties. Staff also supported ScienceFest activities at Fuller Lodge.

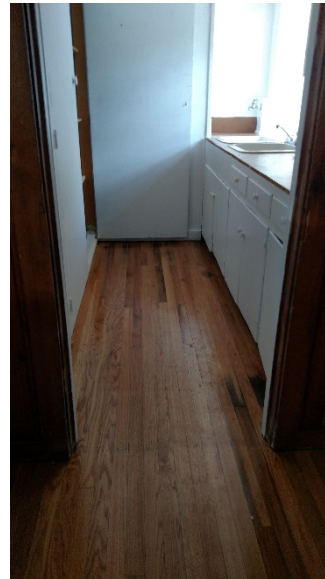
The hardwood floors at the Old Red Cross building were refinished prior to the National Park Service moving in on July 25.



*Old Red Cross Building*



Before Refinishing



After Refinishing

The old archive storage room on the 2nd floor of Fuller Lodge has been converted to a meeting room for Historical Society, Arts Center and Cooperative Extension usage along with public rental.

Our division was given accolades by the County Clerk's office for our support during elections.



## Engineering & Project Management Division

### Fire Station 3

Architectural work continues to design a more substantial reroofing, including a wall system, window replacement and HVAC system to better insulate and control the temperature in the bunkrooms. Construction is contemplated for late 2016 through early 2017.

### Fuller Lodge Phases 2-4 and Historical Museum



R&M Construction continues to make steady progress on both facilities.

At Fuller Lodge, work on the new elevator is progressing steadily as crews address structural, plumbing and fire sprinkler conflicts. Work on the 2nd floor restroom renovations is continuing. The first coat of sealant has been placed on the Zia and Throne Room floors. The final coats are scheduled for the week of July 25. The contractor has begun work to replace the steps and retaining wall to

the basement near the kitchen. Much of the demo is completed and the contractor will begin work to replace them.



Work at the Museum continues to be challenging, but progress continues with the new air conditioning, heating, lighting and communication systems, along with flooring and interior display walls.

### LAPD Dispatch Lighting Improvements

Design to improve the lighting needs of the dispatch area continues. Changes to the system will include removing the existing fluorescent lighting system and installing dimmable LED fixtures to customize lighting levels. Request for quotes have been sent to two of the on-call electrical contractors to perform the work. This work will begin in the fall.

### **Mesa Library HVAC Improvements**

The current system is an evaporative cool system, while a less expensive system to install and operate it does not provide adequate cooling during times of high (30% plus) humidity. The system itself is limited in its cooling capacity due to its initial design. The design consultant will look at several system options including review of initial and life-cycle costs and provide this analysis to staff for consideration.

The work is scheduled to occur in spring 2017 and continue throughout the summer to eliminate pipe freezing exposure during system shutdown.

### **Knecht Street Improvements**

Asphalt paving of Knecht St. and concrete placement of the trail connection is complete. Road striping, lighting, signage, manhole adjustments and valley gutter placement will continue to as the project nears completion.



### **NMDOT NM502/Trinity Reconstruction Project**

Engineering Staff continues to work with NMDOT as needed towards their effort to advertise the project for bids and begin construction in spring 2017.

### **White Rock Complex & Senior Center Renovations**

Crews with R&M Construction continue to make steady progress on renovations, including interior wall framing which is 75% complete, HVAC ducting and boiler piping is underway, excavation for the courtyard storm sewer is underway with utility trenching being done simultaneously. The fire protection supply line in Longview was successfully completed.





**Western Area Improvements Phase 4**

On May 24th, Council approved the bid award to TLC Plumbing & Utility.

The contractor has completed construction of 40th Street. Work within the Denver Still area which includes 37th Street, 38th Street, 39th Street and Ridgeway is ongoing with the installation of 8" water line. Curb and gutter, sidewalk, drive pads and fillets at the intersections are following the installation of the waterline.

Construction is scheduled to be completed October 31st, weather permitting.







## Central Avenue Improvements – Phase 2



On June 28<sup>th</sup> Council approved the contract award to Century Club Construction.

The project consists of the reconstruction of Central Avenue from 15th Street to 9th Street including sanitary sewer placement, road reconstruction and streetscape improvements including wider ADA accessible sidewalks, street and pedestrian lighting, landscaping, irrigation and street furniture.

The contractor began groundbreaking work on July 20<sup>th</sup> with the installation of an 8" sewer line and manhole on the south side of Central at 15th Street. The project has an anticipated construction completion date of October 28<sup>th</sup>, weather permitting. Parks crews have been removing trees on Central Avenue and transplanting within the County.



### **Canyon Rim Trail Project**

Star Paving Company continues construction; crews are nearing completion with retaining wall installation which will extend a large portion of the project.

The project consists of a 10 ft. wide multiuse trail from Fire Station 6 to Smith's Marketplace and includes retaining walls and bridge spanning DP Canyon. The project is scheduled for completion in late 2016/early 2017, weather permitting.



### **WIPP/Supplemental Environmental Project Meetings**

The New Mexico Environment Department, the U.S. Department of Energy and its contractors signed two settlement agreements resolving the February 2014 incidents at the Waste Isolation Pilot Plant in Carlsbad and the associated activities at Los Alamos National Laboratory. The agreements provide for a set of Supplemental Environmental Projects (SEPs) in both the Carlsbad and Los Alamos communities that enhance and improve New Mexico's roads, water infrastructure and emergency response infrastructure. Philo Shelton, Public Works Director; Eric Martinez, County Engineer; and Bryan Aragon, Senior Engineer have been attending meetings to help develop work plans for the following projects that will be funded as part of the WIPP settlement in Los Alamos:

\$12 million to improve DOE-owned transportation routes used to ship transuranic waste to WIPP.

- Intersection of SR 4 and East Jemez Road
- East Jemez Road (east for approximately 4 miles)
- Security check point and Jemez Road
- NM 502 from MP 5.6 to MP 8.6
- NM 502/NM4 Interchange
- East Jemez Road ( guardrail repair/replacement)

\$7.5 million to design and install engineering structures in canyons in and around LANL to slow storm water flow and decrease sediment load to improve water quality allowing surface water management at the watershed scale.

\$2.5 million to fund increased sampling and monitoring capabilities for storm water runoff in and around LANL, with the results of the sampling and monitoring to be shared with the public and NMED.

## **Environmental Services Division**



### **Defending our Nation**

We would like to welcome back and thank SSgt. Joseph Baca for his service to our Country as part of the NM Air National Guard. Joseph served in the Middle East for eight with the 557<sup>th</sup> Red Horse squadron.

### **Environmental Sustainability Board**

The Environmental Sustainability Board has two vacancies and recruitment efforts are currently underway. We would like to give a special thank you to Cliff Han and Sandra West for serving on the board. On, July 26, 2016, County Council reappointed John Bliss and Sarah Terrill to the board.

At the ESB meeting on July 21, 2016, the board approved a recommendation to revamp the brush and bulk item collection program that will be going forward to County Council in the near future.

### **Environmental Services Recruitment**

Environmental Services currently has one vacancy; the recruitment efforts are underway for an equipment operator.

### **Household Hazardous Waste Collection Hours**

The Eco Station has redefined collection hours for the collection of household hazardous waste to Friday and Saturday 9am to 3pm. Residents who pay for refuse services are eligible to bring in paints, old chemicals, aerosols and other unwanted household hazard waste. The County then manages and ensures the materials are properly disposed, recycled or reused.



## Science Festival



The Environmental Sustainability Board hosted an educational booth at ScienceFest and shared information about the do's and don'ts of recycling, how to create a sustainably yard, and demonstrated the compost bins that are available to purchase at the Eco Station for \$60.



## Demonstration at Ponderosa Children's Montessori School



Derrick Voight, Environmental Services Superintendent, visits Ponderosa Children's Montessori School and demonstrates how recycling truck collects recycle from businesses and households. The children ranged in age from 3 to 5 years old and they were very interested in learning how the truck worked.

## Summer 2016 Brush and Bulk Item Collection Schedule

The curbside collection occurs four times a year (spring, summer, fall and winter) in effort to assist residents with the disposal of bulk items and yard waste. Environmental Services is currently on schedule.

Area	Set out no sooner than	Collection starts
Barranca Mesa, Ponderosa Estates, Loma Linda & Hawks Landing	June 24	July 5
Quemazon, Sandia, Trinity, Orange & Nickel	July 1	July 11
North Mesa	July 8	July 18
Walnut, Yucca, Urban, Arizona, Town Site	July 15	July 25
Rover, Old Town, Meadow Lane, Aragon, Bryce Avenue	July 22	Aug. 1
La Vista, Canada Way, Canada Circle, Barcelona, Canyon Vista, Sierra Vista, Monte Vista, La Paloma	July 29	Aug. 8
La Senda & Piedra Loop	Aug. 5	Aug. 15

### Per Code Enforcement:

Residents will be in violation of Los Alamos County Code Chapter 18 if any of the conditions below are demonstrated:

- Pile is set out when your area is not scheduled to receive collection.
- Pile contains non-accepted material.
- Pile is obstructed by obstacles.
- Pile is set out after designated pickup date

Residents may receive a citation into Municipal Court where they can face fines and charges up to \$ 500.00 or 90 days in Jail. For each day there is a violation a new citation may be issued.

### REMINDER:

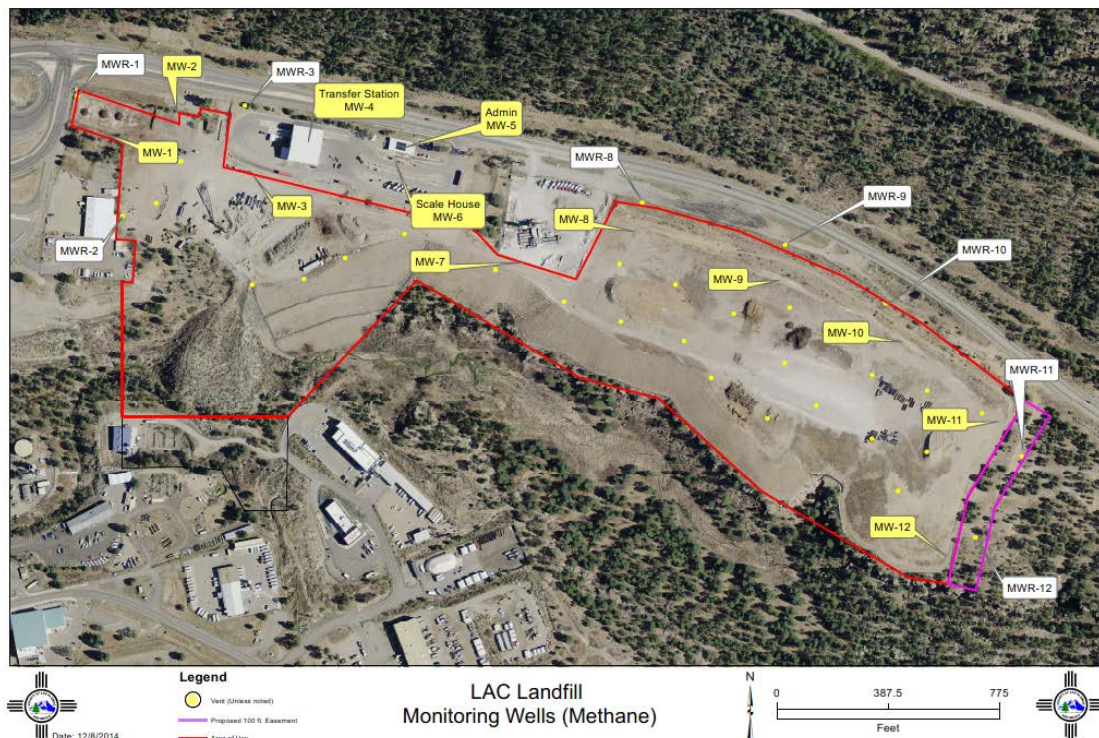
- Do not set out materials sooner than ten days before the first day of your scheduled collection date.
- Do not set out materials that are not accepted.
- One pickup per household, piles can be no larger than 8 cubic yards
- Set items close to the curb - avoid placing items under power lines or near cars or utility boxes
- All leaves and pine needles should be placed in paper yard waste bags
- Items that will be picked up: brush, Christmas trees, mattresses, and large appliances (excluding refrigerators), and large furniture
- Place trash in your trash roll cart

***Items that WILL NOT be collected: Refrigerators, freezers, televisions, glass, construction material, lumber, tires, concrete, railroad ties, fencing materials, or paints/chemicals.***



## Landfill Gas Update

In general, the methane concentrations at the LAC landfill appear to be decreasing. MP-11R is above 100 percent LEL. However, the concentrations at MP-11R have consistently declined over that last 4 months. It measured 9% (percent methane gas in air) in July, 16% in June, 19% in May, and 36% in April.



## Facilities Division

Main Gate project has been completed.

Ranch School remodel has been completed and the National Parks Service has moved into the facility.

– Crews are working on the access control to the restrooms at Ashley Pond.

Contractor installed access controls for four doors and installed the monitor at the Municipal Court

Thank you – Tim Martinez, Keith Yeske, Richard Branch, Leon Ortega, and Rick Garcia for all your help with the Main Gate Project.



*The permanent facade at Los Alamos Main Gate Park was completed in time for ScienceFest.*

## **Fleet Division**

Fleet employees are meeting with vendors to review contracts and submit orders for FY17.

Fire Department purchased a new bush chipper.



## **Traffic and Streets Division**

With summer in full swing, there are many Los Alamos crews, private contractors and members of our community out working on the streets, sidewalks and paths in the County. Our office has issued 120 traffic, excavation and curb cut permits this year, the majority being issued in the last 3 months. Please remain vigilant while you are out on our streets and keep their safety in mind at all times. Thank you from the Traffic and Streets Division.

Crews from Traffic and Streets, Fleet, Parks, Transit and the Warehouse worked together for the 2016 4<sup>th</sup> of July Fireworks event in White Rock. The preparations they set forth in advance helped them facilitate a safe and enjoyable experience for the public. In the lull between the morning set-up and the afternoon festivities, a beanbag ("Corn Hole") tournament was held in appreciation of the hard work put forth by county staff.







## Streets Division

The Guaje Canyon Road Mitigation Project was awarded to Los Alamos Landscaping and More, LLC, repairs began July 11<sup>th</sup>. This is a FEMA based project in conjunction with Los Alamos County.



Crack sealing operations have begun along Diamond Drive from the roundabout to Omega West Bridge. GM Emulsions was secured to perform this work based upon a pricing agreement competitively bid earlier this year.





Los Alamos County Streets Crews in coordination with Parks Crews have been working on the North Mesa ball fields in preparation for the Southwest Regional Little League Tournament. Lasting nearly a week, this tournament has been a great addition to County economic development. While Parks crews prepared the fields and stands, Streets crews installed new drainage and storm drains where water had historically pooled. Participants of the tournament indicated this is one of the nicest facilities they played at.



*Removed shrubs due to right of way obstruction at 401 Rover. Shrubs were also removed at 328 Rover.*



*Before and after photos of a trail on 45<sup>th</sup> Street.*





*Repaired and placed a sidewalk stone on Meadow Lane that a resident damaged when he pulled out shrubs with a wrecker.*



*Repaired and replaced curb, gutter, and sidewalk at 1400 Sage due to a utility break.*



*Crews repaired, replaced, and dressed back the sidewalk that was removed on Jeffrey Lane due to a water break.*



## Traffic Division

The Traffic Division Crews have been working on the Central Avenue lighting project a total of 30 light poles have been removed and transported to a vendor for powder coating.

Traffic Division Crews have been working with the Los Alamos Public Schools to get the school zone flashers ready for the upcoming school year. They are programming the equipment for morning arrival and afternoon release schedules. They have pressure washed curbs at school zones and safe routes in White Rock and Los Alamos, painted school zones and safe routes in White Rock, they started painting school zones & safe zones in Los Alamos, and installed school crosswalk signs at Chamisa School and Rover and Meadow. This is an ongoing process and will be anticipated to be completed before school starts in August.



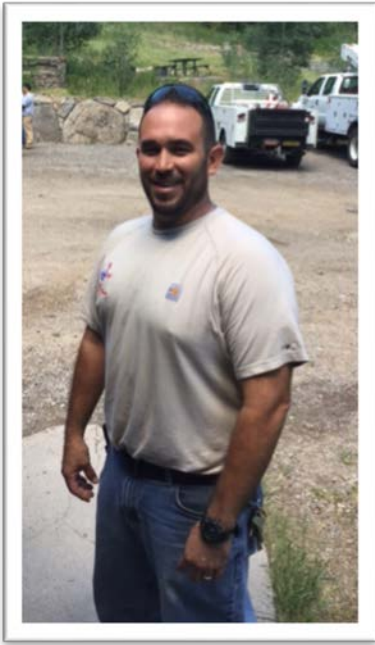
Crews from Facilities and Traffic & Streets assemble the new signs for Main Gate Park in time for Science Fest 2016.

Thank you – Alipio Mondragon, Anthony Lucero, Bob Woodall, Ray Baca, Chris Montoya, Constantine Tsortiz, Joesph Blea, and Pete Vigil for all your help with the Main Gate Project.





## Welcome back!



We would like to welcome back and thank MSgt. Raymond Baca for his service to our Country as part of the NM Air National Guard. Ray served overseas with 201 Red Horse squadron.

## Transit Division

The Transit Division continues work to implement route and schedule adjustments to better serve the community. To date, several modifications have been made including:

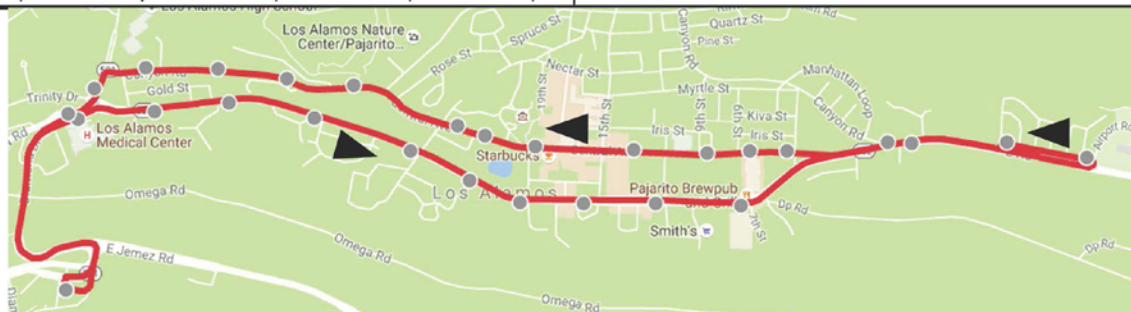
- Mar. 14 – Afternoon Express routes adjusted
- May 23 – Schedules rotated 5 minutes forward
- Jun. 27 – Running times, layovers, time points adjusted

On August 8th, the final route and schedule modifications will be implemented. On that date, Route M will begin operating between White Rock and the Transit Center, with service in White Rock provided in a counter-clockwise loop. Route 3 will begin providing service every thirty-minutes with the route shortened to serve the food co-op as the easternmost extent. These route and schedule revisions were developed through a public involvement process that included focus group meetings and a community-wide survey (conducted on paper and Open Forum) to gather ridership preferences specific to what routes and schedules the community desired. The public preferences expressed through the process were presented to the T-Board, on July 7th, along with a staff recommendation to adopt the route and schedule revisions indicated above, for implementation on August 8th.

Finally, the Transit Division is in the process of recruiting for key staff vacancies including that of Transit Division Manager and Management Analyst. More information on this effort will be forthcoming as candidates are interviewed, and selected, to fill these positions.

## Route 1: Downtown Circulator

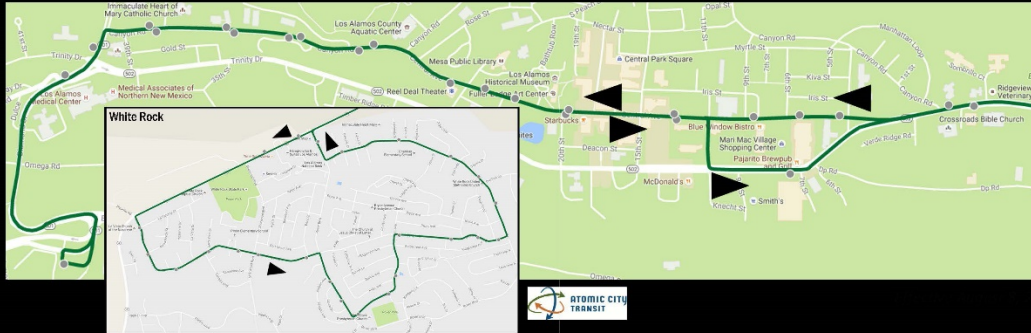
Outbound (to East Dr & Airport from Transit Center)					Inbound (to Transit Center from East Dr & Airport)					
Depart Transit Center	Trinity & Diamond	Trinity & Oppenheimer	Trinity & 7th	Arrive East Drive & Airport	Depart East Drive & Airport	Central & 6th	Central & 15th	Central & Mesa Library	Canyon & Diamond	Arrive Transit Center
6:35 a	6:36 a	6:38 a	6:41 a	6:43 a	6:15 a	6:17 a	6:18 a	6:22 a	6:24 a	6:26 a
7:05 a	7:06 a	7:08 a	7:11 a	7:13 a	6:45 a	6:47 a	6:48 a	6:52 a	6:54 a	6:56 a
7:35 a	7:36 a	7:38 a	7:41 a	7:43 a	7:15 a	7:17 a	7:18 a	7:22 a	7:24 a	7:26 a
8:05 a	8:06 a	8:08 a	8:11 a	8:13 a	7:45 a	7:47 a	7:48 a	7:52 a	7:54 a	7:56 a
8:35 a	8:36 a	8:38 a	8:41 a	8:43 a	8:15 a	8:17 a	8:18 a	8:22 a	8:24 a	8:26 a
9:05 a	9:06 a	9:08 a	9:11 a	9:13 a	8:45 a	8:47 a	8:48 a	8:52 a	8:54 a	8:56 a
9:35 a	9:36 a	9:38 a	9:41 a	9:43 a	9:15 a	9:17 a	9:18 a	9:22 a	9:24 a	9:26 a
10:05 a	10:06 a	10:08 a	10:11 a	10:13 a	9:45 a	9:47 a	9:48 a	9:52 a	9:54 a	9:56 a
10:35 a	10:36 a	10:38 a	10:41 a	10:43 a	10:15 a	10:17 a	10:18 a	10:22 a	10:24 a	10:26 a
Peak service begins @ 11:00 AM from East Dr & Airport Rd					10:45 a	10:47 a	10:48 a	10:52 a	10:54 a	10:56 a
11:05 a	11:06 a	11:08 a	11:11 a	11:13 a	11:00 a	11:02 a	11:03 a	11:07 a	11:09 a	11:11 a
11:20 a	11:21 a	11:23 a	11:26 a	11:28 a	11:15 a	11:17 a	11:18 a	11:22 a	11:24 a	11:26 a
11:35 a	11:36 a	11:38 a	11:41 a	11:43 a	11:30 a	11:32 a	11:33 a	11:37 a	11:39 a	11:41 a
11:50 a	11:51 a	11:53 a	11:56 a	11:58 a	11:45 a	11:47 a	11:48 a	11:52 a	11:54 a	11:56 a
12:05 p	12:06 p	12:08 p	12:11 p	12:13 p	12:00 p	12:02 p	12:03 p	12:07 p	12:09 p	12:11 p
12:20 p	12:21 p	12:23 p	12:26 p	12:28 p	12:15 p	12:17 p	12:18 p	12:22 p	12:24 p	12:26 p
12:35 p	12:36 p	12:38 p	12:41 p	12:43 p	12:30 p	12:32 p	12:33 p	12:37 p	12:39 p	12:41 p
12:50 p	12:51 p	12:53 p	12:56 p	12:58 p	12:45 p	12:47 p	12:48 p	12:52 p	12:54 p	12:56 p
					Peak service ends @ 12:58 PM when it arrives at East Dr & Airport					
1:05 p	1:06 p	1:08 p	1:11 p	1:13 p	1:15 p	1:17 p	1:18 p	1:22 p	1:24 p	1:26 p
1:35 p	1:36 p	1:38 p	1:41 p	1:43 p	1:45 p	1:47 p	1:48 p	1:52 p	1:54 p	1:56 p
2:05 p	2:06 p	2:08 p	2:11 p	2:13 p	2:15 p	2:17 p	2:18 p	2:22 p	2:24 p	2:26 p
2:35 p	2:36 p	2:38 p	2:41 p	2:43 p	2:45 p	2:47 p	2:48 p	2:52 p	2:54 p	2:56 p
3:05 p	3:06 p	3:08 p	3:11 p	3:13 p	3:15 p	3:17 p	3:18 p	3:22 p	3:24 p	3:26 p
3:35 p	3:36 p	3:38 p	3:41 p	3:43 p	3:45 p	3:47 p	3:48 p	3:52 p	3:54 p	3:56 p
4:05 p	4:06 p	4:08 p	4:11 p	4:13 p	4:15 p	4:17 p	4:18 p	4:22 p	4:24 p	4:26 p
4:35 p	4:36 p	4:38 p	4:41 p	4:43 p	4:45 p	4:47 p	4:48 p	4:52 p	4:54 p	4:56 p
5:05 p	5:06 p	5:08 p	5:11 p	5:13 p	5:15 p	5:17 p	5:18 p	5:22 p	5:24 p	5:26 p
5:35 p	5:36 p	5:38 p	5:41 p	5:43 p	5:45 p	5:47 p	5:48 p	5:52 p	5:54 p	5:56 p
6:05 p	6:06 p	6:08 p	6:11 p	6:13 p	6:15 p	6:17 p	6:18 p	6:22 p	6:24 p	6:26 p
6:35 p	6:36 p	6:38 p	6:41 p	6:43 p	6:45 p	6:47 p	6:48 p	6:52 p	6:54 p	6:56 p
7:05 p	7:06 p	7:08 p	7:11 p	7:13 p						



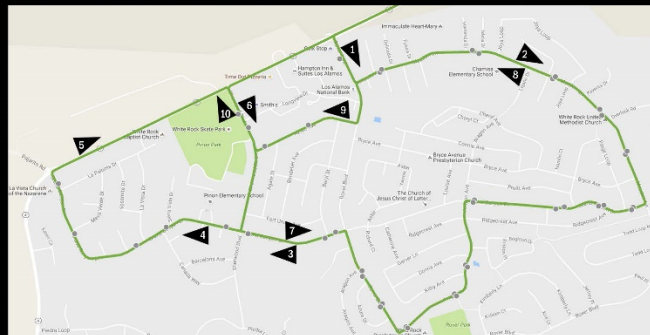
Effective August 8, 2016



## Route 2M: White Rock via Main Hill

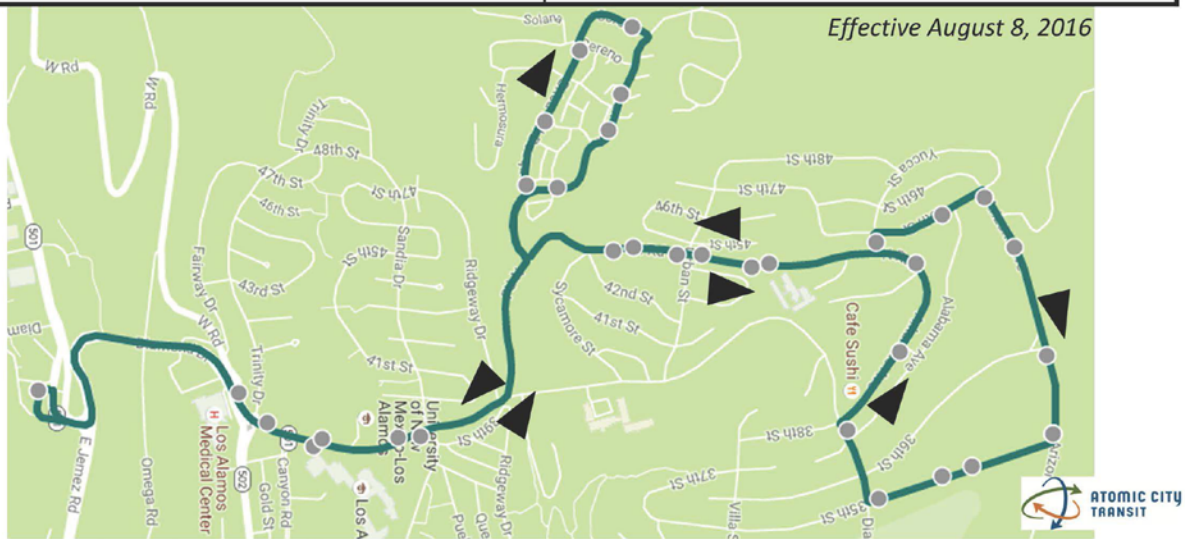


## Route 2T: White Rock via Truck Route



## Route 4: North Community

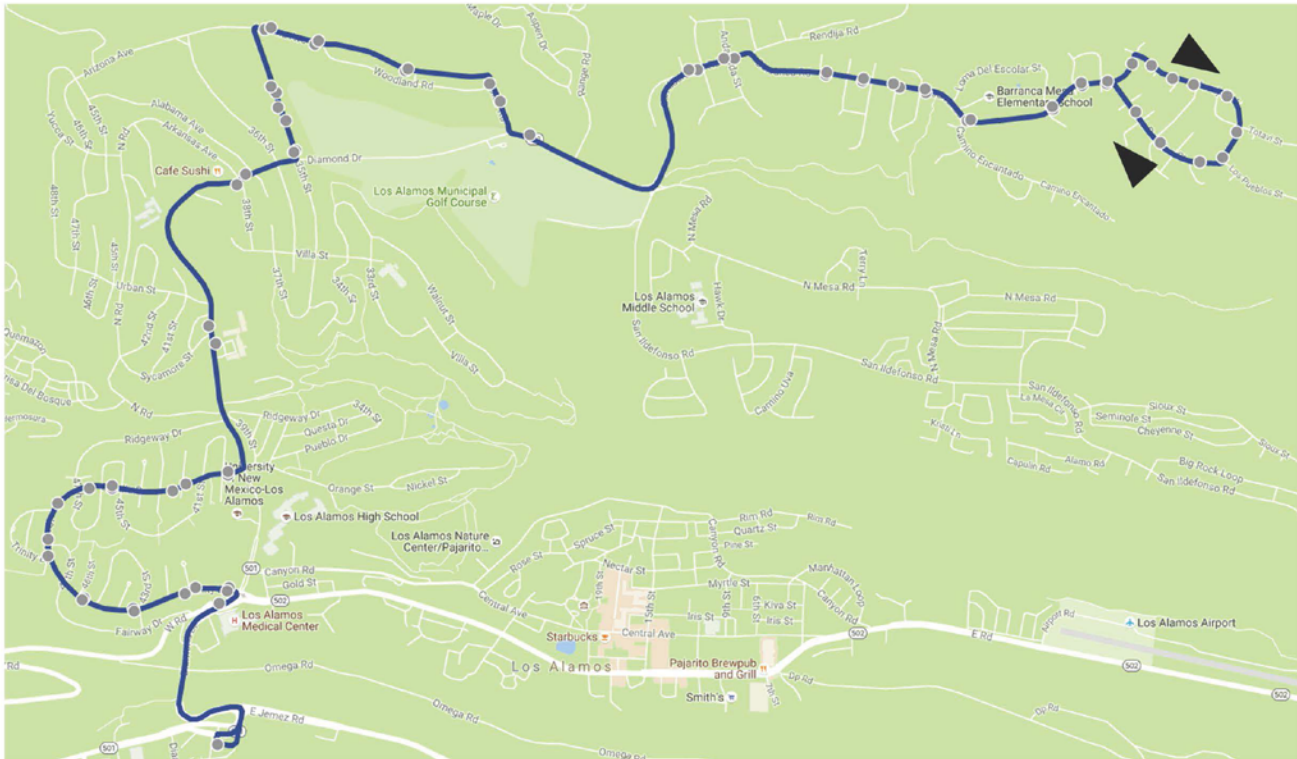
<i>Outbound (to Arizona &amp; 35th from Transit Center)</i>					<i>Inbound (to Transit Center from Arizona &amp; 35th)</i>				
Depart Transit Center	Diamond & Orange	Brisa Del Bosque & Quemazon	Yucca & North Road	Arrive Arizona & 35th	Depart Arizona & 35th	North Road & Yucca	North Road & Urban Park	Diamond & Sandia	Arrive Transit Center
6:35 a	6:37 a	6:40 a	6:45 a	6:48 a	6:18 a	6:21 a	6:23 a	6:25 a	6:27 a
7:05 a	7:07 a	7:10 a	7:15 a	7:18 a	6:48 a	6:51 a	6:53 a	6:55 a	6:57 a
7:35 a	7:37 a	7:40 a	7:45 a	7:48 a	7:18 a	7:21 a	7:23 a	7:25 a	7:27 a
8:05 a	8:07 a	8:10 a	8:15 a	8:18 a	7:48 a	7:51 a	7:53 a	7:55 a	7:57 a
8:35 a	8:37 a	8:40 a	8:45 a	8:48 a	8:18 a	8:21 a	8:23 a	8:25 a	8:27 a
8:35 a	8:37 a	8:40 a	8:45 a	8:48 a	8:48 a	8:51 a	8:53 a	8:55 a	8:57 a
9:05 a	9:07 a	9:10 a	9:15 a	9:18 a	9:18 a	9:21 a	9:23 a	9:25 a	9:27 a
9:35 a	9:37 a	9:40 a	9:45 a	9:48 a	9:48 a	9:51 a	9:53 a	9:55 a	9:57 a
10:05 a	10:07 a	10:10 a	10:15 a	10:18 a	10:18 a	10:21 a	10:23 a	10:25 a	10:27 a
10:35 a	10:37 a	10:40 a	10:45 a	10:48 a	10:48 a	10:51 a	10:53 a	10:55 a	10:57 a
11:05 a	11:07 a	11:10 a	11:15 a	11:18 a	11:18 a	11:21 a	11:23 a	11:25 a	11:27 a
11:35 a	11:37 a	11:40 a	11:45 a	11:48 a	11:48 a	11:51 a	11:53 a	11:55 a	11:57 a
12:05 p	12:07 p	12:10 p	12:15 p	12:18 p	12:18 p	12:21 p	12:23 p	12:25 p	12:27 p
12:35 p	12:37 p	12:40 p	12:45 p	12:48 p	12:48 p	12:51 p	12:53 p	12:55 p	12:57 p
1:05 p	1:07 p	1:10 p	1:15 p	1:18 p	1:18 p	1:21 p	1:23 p	1:25 p	1:27 p
1:35 p	1:37 p	1:40 p	1:45 p	1:48 p	1:48 p	1:51 p	1:53 p	1:55 p	1:57 p
2:05 p	2:07 p	2:10 p	2:15 p	2:18 p	2:18 p	2:21 p	2:23 p	2:25 p	2:27 p
2:35 p	2:37 p	2:40 p	2:45 p	2:48 p	2:48 p	2:51 p	2:53 p	2:55 p	2:57 p
3:05 p	3:07 p	3:10 p	3:15 p	3:18 p	3:18 p	3:21 p	3:23 p	3:25 p	3:27 p
3:35 p	3:37 p	3:40 p	3:45 p	3:48 p	3:48 p	3:51 p	3:53 p	3:55 p	3:57 p
4:05 p	4:07 p	4:10 p	4:15 p	4:18 p	4:18 p	4:21 p	4:23 p	4:25 p	4:27 p
4:35 p	4:37 p	4:40 p	4:45 p	4:48 p	4:48 p	4:51 p	4:53 p	4:55 p	4:57 p
5:05 p	5:07 p	5:10 p	5:15 p	5:18 p	5:18 p	5:21 p	5:23 p	5:25 p	5:27 p
5:35 p	5:37 p	5:40 p	5:45 p	5:48 p	5:48 p	5:51 p	5:53 p	5:55 p	5:57 p
6:05 p	6:07 p	6:10 p	6:15 p	6:18 p	6:18 p	6:21 p	6:23 p	6:25 p	6:27 p
6:35 p	6:37 p	6:40 p	6:45 p	6:48 p	6:48 p	6:51 p	6:53 p	6:55 p	6:57 p
7:05 p	7:07 p	7:10 p	7:15 p	7:18 p					





## Route 5: Barranca Mesa

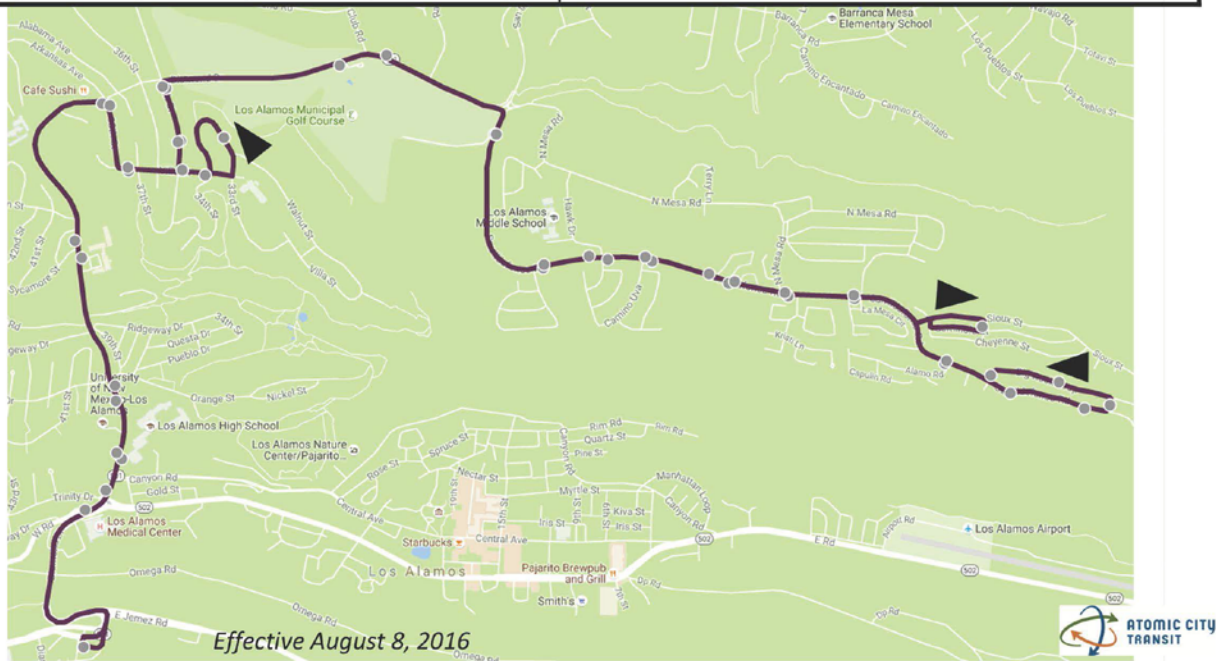
<i>Outbound (to Los Pueblos &amp; Navajo from Transit Center)</i>					<i>Inbound (to Transit Center from Los Pueblos &amp; Navajo)</i>				
Depart Transit Center	Sandia & 42nd	Arizona & 35th	Barranca & San Ildefonso	Arrive Los Pueblos & Navajo	Depart Los Pueblos & Navajo	Barranca & San Ildefonso	Arizona & 35th	Sandia & 42nd	Arrive Transit Center
6:35 a	6:40 a	6:45 a	6:50 a	6:55 a	6:08 a	6:12 a	6:17 a	6:21 a	6:26 a
7:35 a	7:40 a	7:45 a	7:50 a	7:55 a	7:08 a	7:12 a	7:17 a	7:21 a	7:26 a
8:35 a	8:40 a	8:45 a	8:50 a	8:55 a	8:08 a	8:12 a	8:17 a	8:21 a	8:26 a
9:35 a	9:40 a	9:45 a	9:50 a	9:55 a	9:08 a	9:12 a	9:17 a	9:21 a	9:26 a
10:35 a	10:40 a	10:45 a	10:50 a	10:55 a	10:08 a	10:12 a	10:17 a	10:21 a	10:26 a
11:35 a	11:40 a	11:45 a	11:50 a	11:55 a	11:08 a	11:12 a	11:17 a	11:21 a	11:26 a
12:35 p	12:40 p	12:45 p	12:50 p	12:55 p	12:08 p	12:12 p	12:17 p	12:21 p	12:26 p
1:35 p	1:40 p	1:45 p	1:50 p	1:55 p	1:08 p	1:12 p	1:17 p	1:21 p	1:26 p
2:35 p	2:40 p	2:45 p	2:50 p	2:55 p	2:08 p	2:12 p	2:17 p	2:21 p	2:26 p
3:35 p	3:40 p	3:45 p	3:50 p	3:55 p	3:08 p	3:12 p	3:17 p	3:21 p	3:26 p
4:35 p	4:40 p	4:45 p	4:50 p	4:55 p	4:08 p	4:12 p	4:17 p	4:21 p	4:26 p
5:35 p	5:40 p	5:45 p	5:50 p	5:55 p	5:08 p	5:12 p	5:17 p	5:21 p	5:26 p
6:35 p	6:40 p	6:45 p	6:50 p	6:55 p	6:08 p	6:12 p	6:17 p	6:21 p	6:26 p



Effective August 8, 2016

## Route 6: North Mesa

<i>Outbound (to Stoneview &amp; Big Rock from Transit Center)</i>					<i>Inbound (to Transit Center from Stoneview &amp; Big Rock)</i>				
Depart	Diamond	Villa	San	Arrive	Depart	San	Villa	Diamond	Arrive
Transit Center	& Sandia	& 33rd	Ildefonso & Hawk Dr	Stoneview & Big Rock	Stoneview & Big Rock	Ildefonso & Hawk Dr	& 33rd	& Sandia	Transit Center
<i>AM Peak service begins @ 6:35 AM from Stoneview &amp; Big Rock</i>					6:05 a	6:11 a	6:17 a	6:22 a	6:24 a
6:35 a	6:37 a	6:41 a	6:47 a	6:51 a	6:35 a	6:41 a	6:47 a	6:52 a	6:54 a
7:05 a	7:07 a	7:11 a	7:17 a	7:21 a	7:05 a	7:11 a	7:17 a	7:22 a	7:24 a
7:35 a	7:37 a	7:41 a	7:47 a	7:51 a	7:35 a	7:41 a	7:47 a	7:52 a	7:54 a
8:05 a	8:07 a	8:11 a	8:17 a	8:21 a	8:05 a	8:11 a	8:17 a	8:22 a	8:24 a
8:35 a	8:37 a	8:41 a	8:47 a	8:51 a	8:35 a	8:41 a	8:47 a	8:52 a	8:54 a
9:05 a	9:07 a	9:11 a	9:17 a	9:21 a	9:05 a	9:11 a	9:17 a	9:22 a	9:24 a
9:35 a	9:37 a	9:41 a	9:47 a	9:51 a	<i>AM Peak service ends @ 9:21 AM when it arrives at Stoneview &amp; Big Rock</i>				
10:35 a	10:37 a	10:41 a	10:47 a	10:51 a	10:05 a	10:11 a	10:17 a	10:22 a	10:24 a
11:35 a	11:37 a	11:41 a	11:47 a	11:51 a	11:05 a	11:11 a	11:17 a	11:22 a	11:24 a
12:35 p	12:37 p	12:41 p	12:47 p	12:51 p	12:05 p	12:11 p	12:17 p	12:22 p	12:24 p
1:35 p	1:37 p	1:41 p	1:47 p	1:51 p	1:05 p	1:11 p	1:17 p	1:22 p	1:24 p
2:35 p	2:37 p	2:41 p	2:47 p	2:51 p	2:05 p	2:11 p	2:17 p	2:22 p	2:24 p
<i>PM Peak service begins @ 3:05 PM from the Transit Center</i>					3:05 p	3:11 p	3:17 p	3:22 p	3:24 p
3:05 p	3:07 p	3:11 p	3:17 p	3:21 p	3:35 p	3:41 p	3:47 p	3:52 p	3:54 p
3:35 p	3:37 p	3:41 p	3:47 p	3:51 p	4:05 p	4:11 p	4:17 p	4:22 p	4:24 p
4:05 p	4:07 p	4:11 p	4:17 p	4:21 p	4:35 p	4:41 p	4:47 p	4:52 p	4:54 p
4:35 p	4:37 p	4:41 p	4:47 p	4:51 p	5:05 p	5:11 p	5:17 p	5:22 p	5:24 p
5:05 p	5:07 p	5:11 p	5:17 p	5:21 p	5:35 p	5:41 p	5:47 p	5:52 p	5:54 p
5:35 p	5:37 p	5:41 p	5:47 p	5:51 p	6:05 p	6:11 p	6:17 p	6:22 p	6:24 p
6:05 p	6:07 p	6:11 p	6:17 p	6:21 p	<i>PM Peak service ends @ 6:21 PM when it arrives at Stoneview &amp; Big Rock</i>				
6:35 p	6:37 p	6:41 p	6:47 p	6:51 p					





## Kudos

Letter to the Editor: Biggest 4th of July Thanks Ever!  
Submitted by Carol A. Clark on July 8, 2016 - 7:52am



**By STEVE BOERIGTER**  
**Kiwanis 4<sup>th</sup> of July Celebration Chair**

The 2016 4<sup>th</sup> of July Celebration at Overlook Park was the best ever. A good rain a few days earlier led to clear skies and green fields. While we had some brief periods of wind in earlier evening, the sky settled down for a great show. Seeing the skydivers, especially the big flag as the sun was setting was spectacular. Sim Balkey had a huge crowd dancing on the field. Based upon our unofficial receipts, this was the biggest Independence Day Celebration in Los Alamos history. Probably the single biggest Los Alamos community event ever!

While the dedication of fireworks team in Kiwanis might be obvious, much of the community is behind the event long before the first BBQ, football toss, or glow stick. We would like to thank our major sponsor, Los Alamos National Bank. LANB has been a major partner with the Kiwanis Club for more than two decades. Thank you to Franks Supply for donating the quiet and powerful generator that kept the Bouncy Toys going all day. We appreciate all our vendors for keeping the crowd nourished and refreshed. Next time you see them at Ashley Pond remember to say "thanks". A special thank you goes to the Los Alamos Holiday Inn Express for supplying lodging for the Ton-O-Fun crew. The Community Winds gave us classic Independence Day music.

We think we might have stuffed 8,000+ people into Overlook Park. That wouldn't happen without the major efforts from the Los Alamos County and Public Safety. Special thanks goes to Dan Erickson who coordinated all County efforts – and they were considerable! Traffic Division kept everyone moving better than ever before and Atomic City Transit got us in and out of the park with ease. Super special thanks to the Overlook Park team: Ray Villalobos and the rest of the staff from Parks Division. LA Police was able to help many and the Fire Department once again showed off the biggest flag ever seen in Northern New Mexico. Finally, thank you all the dedicated Kiwanians for your time and energy. You continually demonstrate your dedication to the people of Los Alamos and the community of Northern New Mexico. You make this event possible.

The biggest thanks of all goes to you – the community. You make this a wonderful place to live. You help keep this and many other events going through your donations. You make it fun to get together and just celebrate life in America. The Kiwanis Club of Los Alamos hopes you will make plans now to be at Overlook next year. We'll have a fantastic fireworks display. But we know that's not why we celebrate the 4<sup>th</sup> of July. We live in America - and that's worth celebrating.

Daniel Erickson P.E  
Traffic & Street Manager  
Los Alamos County NM

7-22-2016

Dear Mr. Erickson:

Than you replaced my street light bulb on 7-21-2016.  
It's ended two months confuse with 311call & darkness  
at night. Thank you for being highly efficient.

I must Thank You for last Spring that you went the  
extra mile-work to help me with County's business,  
although it's not your department.

Thank you for your Kindness;  
Thank you for your high standard Customer care!

*"It not genius, nor glory, nor love that reflects  
the greatness of human soul; it is kindness."*

You delighted our day, and lighted our night.

Sincerely

"Dr. Lee" Li Liu DOM  
1461 Oakwood Loop  
Los Alamos NM 87544

Accupuncture & "Dr. Lee" DOM

Educated in China in Both Western & Chinese Medicine

Accupuncture  
Herbal Medicine  
Tuina Massage

Board Cert. & Lic.  
30+ Years Exp.  
UHC, B.C. Provider

Tel: 662-7299  
Fax: (505)981-7299



Pain Relief, Injury  
Depression, Anxiety  
& More

Men, Women &  
Children's Health

"Dr. Lee" Li Liu - Doctor of Oriental Medicine  
PO Box 1502, Los Alamos, NM 87544

7-22-2016

Dear Mr. Erickson:

Thank you replaced my street light  
bulb. Thank you for your Kindness,  
and being highly efficient.

You delighted our day, and  
lighted our night!

Thanks,  
"Dr. Lee"