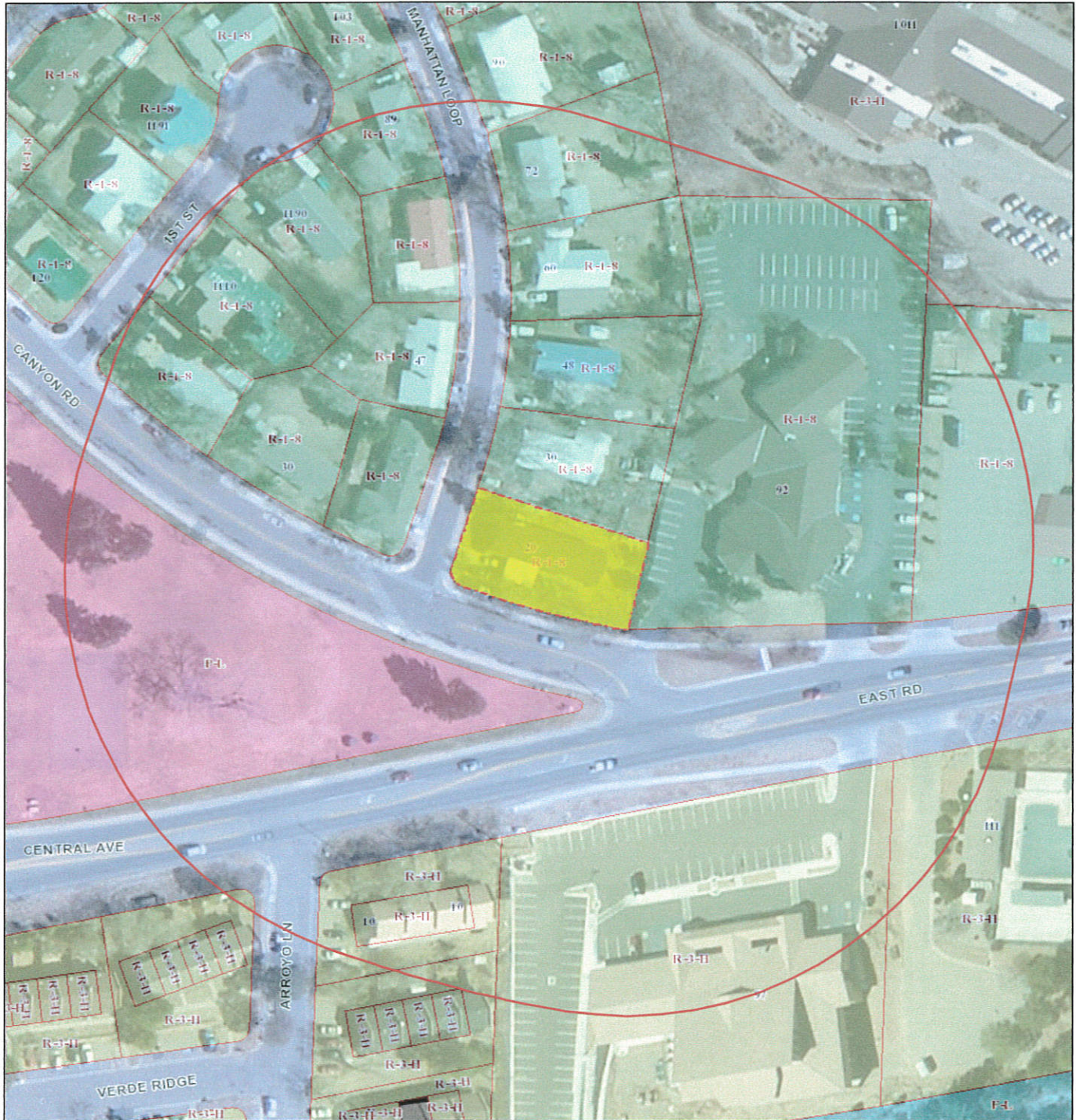
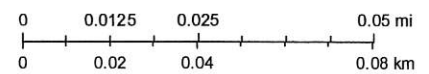


20 Manhattan Loop-300 feet



June 20, 2016

1:1,128



Los Alamos County
Source: Esri, DigitalGlobe, GeoEye, Earthstar Geographics,
CNES/Airbus DS, USDA, USGS, AEX, Getmapping, Aerogrid, IGN,
IGP, swisstopo, and the GIS User Community

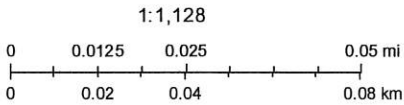
EXHIBIT 1 VICINITY MAP, AERIAL PHOTOS OF PROPERTY

Created by: Los Alamos County
Copyright Los Alamos County 2016, all rights reserved

20 Manhattan Loop-Footprint of within 20 feet



June 19, 2016

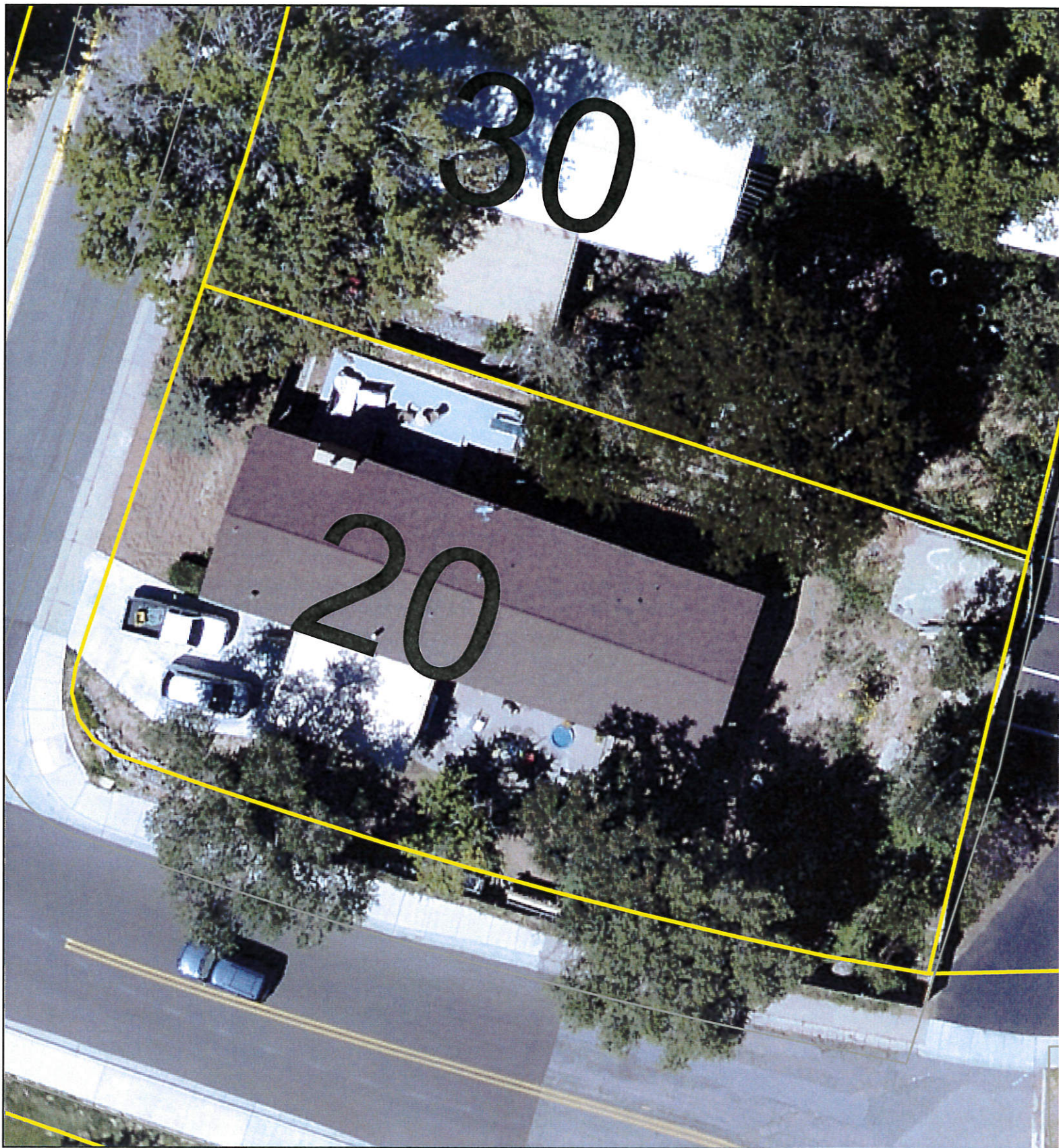


Los Alamos County
Source: Esri, DigitalGlobe, GeoEye, Earthstar Geographics,
CNES/Airbus DS, USDA, USGS, AEX, Getmapping, Aerogrid, IGN,
IGP, swisstopo, and the GIS User Community

EXHIBIT 1 VICINITY MAP, AERIAL PHOTOS OF PROPERTY

Created by: Los Alamos County
Copyright Los Alamos County 2016, all rights reserved

20 Manhattan Loop



0 10 20 40 Feet

EXHIBIT 1 VICINITY MAP, AERIAL PHOTOS OF PROPERTY

All mapping information is for reference only.
Users are solely responsible to confirm data accuracy.
Los Alamos County assumes no liability for errors

1 inch = 21 feet

20 Manhattan easements

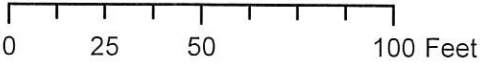
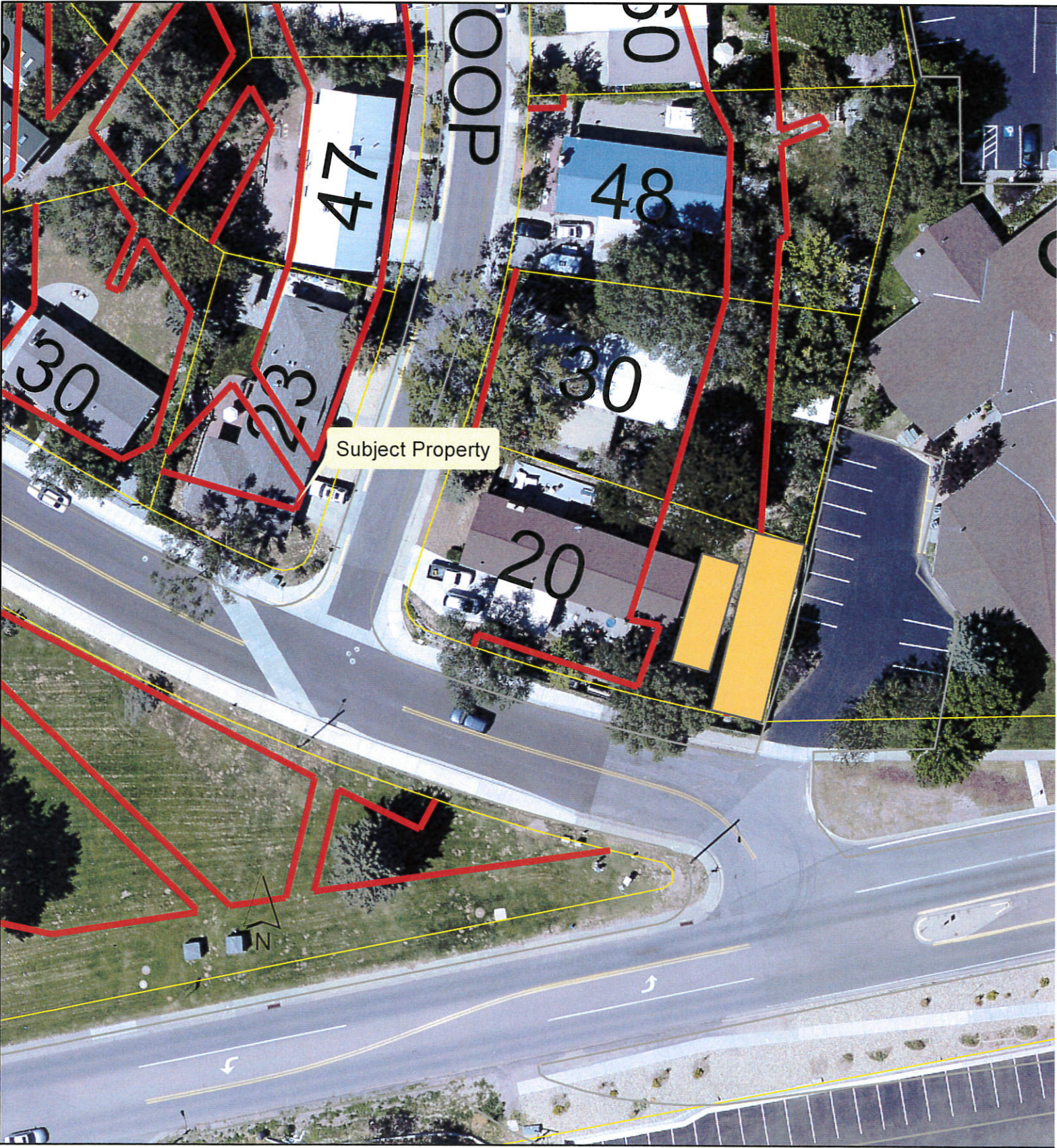


EXHIBIT 1 VICINITY MAP, AERIAL PHOTOS OF PROPERTY

All mapping information is for reference only.
Users are solely responsible to confirm data accuracy.
Los Alamos County assumes no liability for errors

1 inch = 50 feet