



# County of Los Alamos

1000 Central Avenue  
Los Alamos, NM 87544

## DRAFT Minutes Transportation Board

*Khalil Spencer Chair; Brian O'Neil, Vice Chair;  
Nancy Jo Barnes, Eileen Lime, Don Machen, James L. Nesmith,  
and Sriram Swaminarayan Members*

---

Thursday, September 1, 2016

5:30 PM

1000 Central Avenue, Room 110

---

### 1. CALL TO ORDER / ROLL CALL

The September 1, 2016 Transportation Board Meeting was called to order at 5:30 p.m.

Present: Vice-chair O'Neil, Member Machen, Member Nesmith, and Member Swaminarayan.

Chair Spencer, and Member Barnes, were absent.

Staff in attendance: Jon Bulthuis, Deputy Public Works Director; Eric Martinez, County Engineer; Bryan Aragon, Senior Engineer and Louise Romero, Office Manager.

Members of the public in attendance: Josephine McCarthy, 4621 Esperanza, Los Alamos.

### 2. APPROVAL OF AGENDA

A motion was made by Member Machen, seconded by Member Nesmith, that the September 1, 2016 agenda be approved as presented; the motion passed by a unanimous vote.

### 3. PUBLIC COMMENT

Ms. Josephine McCarthy, 4621 Esperanza spoke regarding the difficulties having businesses in a residential area, and the parking issues and the safety issue it has created for her because it does not allow for emergency vehicles to have access to her residence.

### 4. LIAISONS' REPORTS

Member Machen spoke regarding the modifications being made to the bulk and brush item pickup provided by Environmental Services.

**5. APPROVAL OF MINUTES****8507-16**

A motion was made by Member Nesmith, seconded by Member Machen, that the August 4, 2016 meeting minutes be approved as presented; the motion passed by a unanimous vote.

**6. OLD BUSINESS****8541-16**

Bike Plan Public Information and Involvement Plan Discussion

Eric Martinez, County Engineer asked Members for ideas regarding outreach for the Bike Plan Public Information and Involvement Plan. The following ideas were discussed.

- Utility bill stuffer.
- Distribute flyers on the buses.
- Public meeting in both White Rock and Los Alamos town site.
- Schedule public meetings in conjunction with the Transportation Board meetings in Council Chambers.
- Plan a work session with Transportation Board Members and members of the public.

**7. NEW BUSINESS****8510-16**

Bryan Aragon, Senior Engineer presented a Supplemental Environmental Projects update to board members topics discussed are as follows:

- Background of the projects.
- Funding summary.
- Supplemental Environmental Projects within Los Alamos County

A copy of the presentation is attached.

**8. PROJECT UPDATES****8509-16**

Public Works Project Updates were briefly discussed.

**9. CHAIRPERSON'S REPORT**

Chair Spencer was absent. Vice-chair O'Neil introduced and welcomed new Member Sriram Swaminarayan.

**10. FUTURE AGENDA ITEMS**

1. Snow and Ice Control Plan
2. Transit Update
3. Bicycle Master Plan

**11. ADJOURNMENT**

A motion was made by Member Nesmith, that the September 1, 2016 meeting be adjourned.

If you are an individual with a disability who is in need of a reader, amplifier, qualified sign language interpreter, or any other form of auxiliary aid or service to attend or participate in the hearing or meeting, please contact the County Human Resources Division at 505-662-8040 at least one week prior to the meeting or as soon as possible.

Public documents, including the agenda and minutes can be provided in various accessible formats. Please contact the personnel in the Public Works Division at 505-662-8150 if a summary or other type of accessible format is needed.

DRAFT

# New Mexico Environment Department and U.S. Department of Energy Settlement Agreement and Supplemental Environmental Projects

September 1, 2016

Bryan Aragon, P.E., Senior Engineer

## Purpose of Tonight's Meeting

- ▶ Settlement Agreements
  - ▶ Background
  - ▶ Funding Summary
  - ▶ Supplemental Environmental Projects within Los Alamos County
  - ▶ Additional Information

## Background...

- ▶ The New Mexico Environment Department, the U.S. Department of Energy and its contractors signed two settlement agreements resolving the February 2014 incidents at the Waste Isolation Pilot Plant in Carlsbad and the associated activities at Los Alamos National Laboratory.
- ▶ The agreements provide for a set of Supplemental Environmental Projects (SEPs) in both the Carlsbad and Los Alamos communities that enhance and improve New Mexico's roads, water infrastructure and emergency response infrastructure.

## Funding Summary

- ▶ NMED/DOE/WIPP Settlement Agreement
  - ▶ \$34 million to help the N.M. Department of Transportation to make necessary repairs to New Mexico roads used for the transportation of transuranic waste to WIPP in the southeastern portion of New Mexico. The first project is to repair the WIPP North Access Road, an approximately 13-mile stretch of road between Highway 62-180 and the WIPP site.
  - ▶ \$1 million to fund enhanced training and capabilities for local emergency responders, in and around Carlsbad, NM, including funding for training and exercises with local mine rescue teams.
  - ▶ \$4 million to fund the construction of and equipment for an offsite emergency operations center near WIPP to be operated by DOE.
  - ▶ \$3 million for agreements to conduct external triennial compliance reviews of environmental regulatory compliance and operations at WIPP and LANL.



## Funding Summary Continued...

### ▶ NMED/DOE/LANL Settlement Agreement

- ▶ \$12 million to improve DOE-owned transportation routes used to ship transuranic waste to WIPP.
- ▶ \$10 million to replace aging potable water lines and install metering equipment for LANL potable water systems.
- ▶ \$7.5 million to design and install engineered structures in canyons in and around LANL to slow storm water flow and decrease sediment load to improve water quality.
- ▶ \$2.5 million to fund increased sampling and monitoring capabilities for storm water runoff in and around LANL, with the results of the sampling and monitoring to be shared with the public and NMED.
- ▶ \$3 million for agreements to conduct external triennial compliance reviews of environmental regulatory compliance and operations at WIPP and LANL.

## Supplemental Environmental Projects Roadway Projects (\$12Million)

- ▶ East Jemez Road
  - ▶ Pavement Preservation (i.e. Mill & Overlay) – Bridge East for 4 Miles
  - ▶ Guardrail Repair/Replacement
  - ▶ Bus Stop Turnout at Royal Crest
- ▶ Vehicle Access Portal (VAP) – Mill & Overlay
- ▶ NM 502, MP 5.6 to MP 8.6 and SR 4 Interchange – Mill & Overlay
- ▶ East Jemez Road/State Road 4 Intersection Improvements

## East Jemez Road/State Road 4 Intersection Improvements

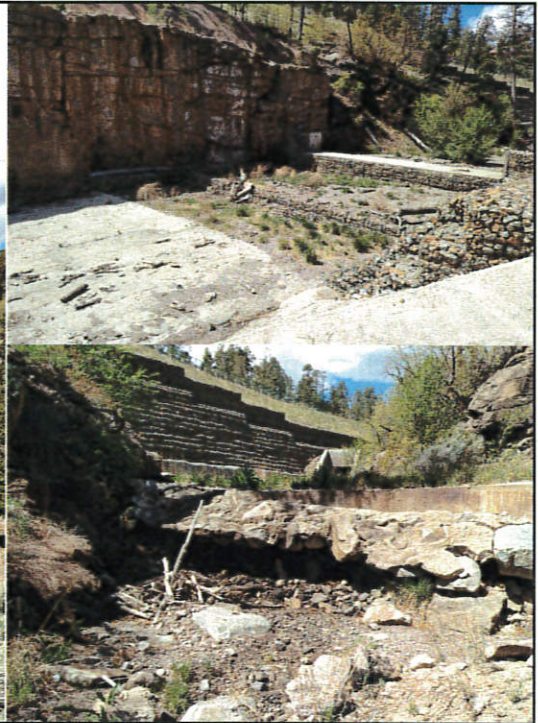


## Supplemental Environmental Projects Stormwater Enhancement Projects (\$7.5 M)

- ▶ Multiple Projects within LANL and Los Alamos County
  - ▶ 16 Project are being evaluated and prioritized
- ▶ County Projects
  - ▶ Pueblo Canyon, between Diamond Drive and North Road
    - ▶ Constructed after the Cerro Grande Fire
    - ▶ Existing structures are failing
  - ▶ DP Canyon
    - ▶ Large area of downtown Los Alamos discharges here
    - ▶ Installing drop structures to decrease velocities and sediment.
  - ▶ Develop Low Impact Development (LID) Standards
    - ▶ Benefit the County with the possible MS4 Designation



## Pueblo Canyon; Between Diamond Drive and North Road



## Supplemental Environmental Projects Stormwater Sampling and Monitoring Projects (\$2.5M)

- ▶ Additional Stormwater Sampling and Monitoring.
- ▶ Make the Intellus System more user friendly.
- ▶ Work with surrounding public agencies and pueblos for technology transfer.



## Additional Information:

- ▶ The work plans are in the process of being finalized.
- ▶ These projects cannot go towards meeting any current regulatory requirements.
- ▶ The work plans have to be approved by NMED and the original settlement agreements have to be amended, prior to these projects being initiated.

## Questions & Comments...