

# Bicycle Transportation Plan Update

Transportation Board Meeting

Incorporated County of Los Alamos  
Public Works Department

Philo S. Shelton III, Department Director  
Eric Martinez, County Engineer  
Desirae Lujan, Engineering Project Manager

April 6, 2017



# Goals

- From 2005 Policy to Plan
  - Transportation Board Bicycle Subcommittee
    - County Staff (Engineering; Manhattan National Park Liaison; Community Development; Parks, Recreation & Open Space)
    - Membership (Jason Lott, Bandelier Superintendent; Khalil Spencer, former T-Board Chairman; Craig Martin, Open Space specialist; Phil Gursky, former P&Z Chairman, Members of the public.)
  - Public Involvement
- Plan for a more comprehensive transportation network that focuses on bicycle travel
  - Enhance quality of life, tourism, economic development (Council Strategic Goals, MPNHP, Key Points of Interest incl. Parks, Recreational Facilities & Trails)
  - Utilize State of the Practice methods for improving bicycle safety, design, and maintenance (Complete Streets, NACTO, AASHTO)
  - Obtain national recognition as a Bicycle Friendly Community from the League of American Bicyclists
  - Interrelation to the Comp Plan, Planning & Zoning Process
  - Transportation Infrastructure Programming & Funding



# Types of Infrastructure Improvements

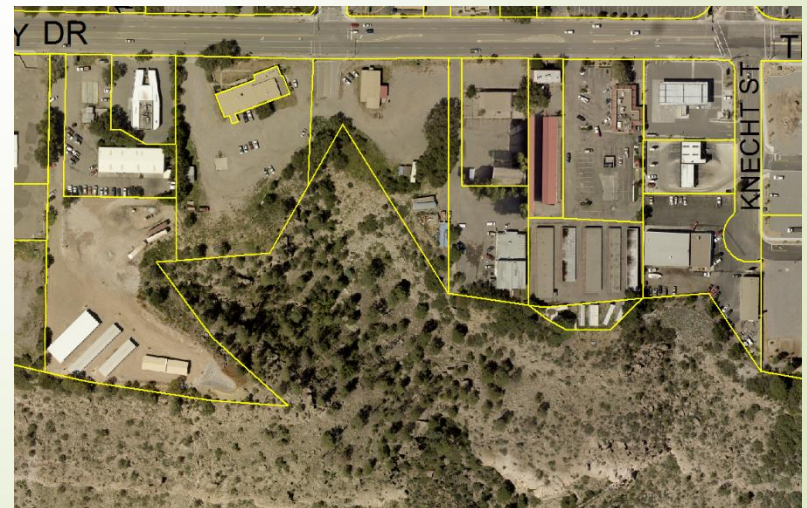
- Shared Use Paths/Multiuse Trails (Canyon Rim Trail)
- On Road Improvements
  - Bike Lanes (Diamond Dr., NM 4)
  - Shared Lane Markings/Sharrows (Central Ave., Sherwood Blvd.)
  - Traffic Signal Improvements
  - Crossings
  - Wayfinding
- Other
  - Bike Sharing
  - Bike Parking
- Several improvements can be completed by regular maintenance operations – restriping, etc.

# Improvements in Progress

- NM 502 Reconstruction
  - Bike Lanes & Crossings (East Park & Pool)
- Canyon Rim Trail Underpass (Entrada Drive to Trailhead)
  - Federal Grant Application Under Consideration
- “High Priority Corridor” approved by Council
  - Canyon Rim Trail Easement Acquisition & Preliminary Design
  - Urban Trail Segment 1 via 20th Street Extension Project
- \$1Million in 2017 CIP funds for Canyon Rim Trail

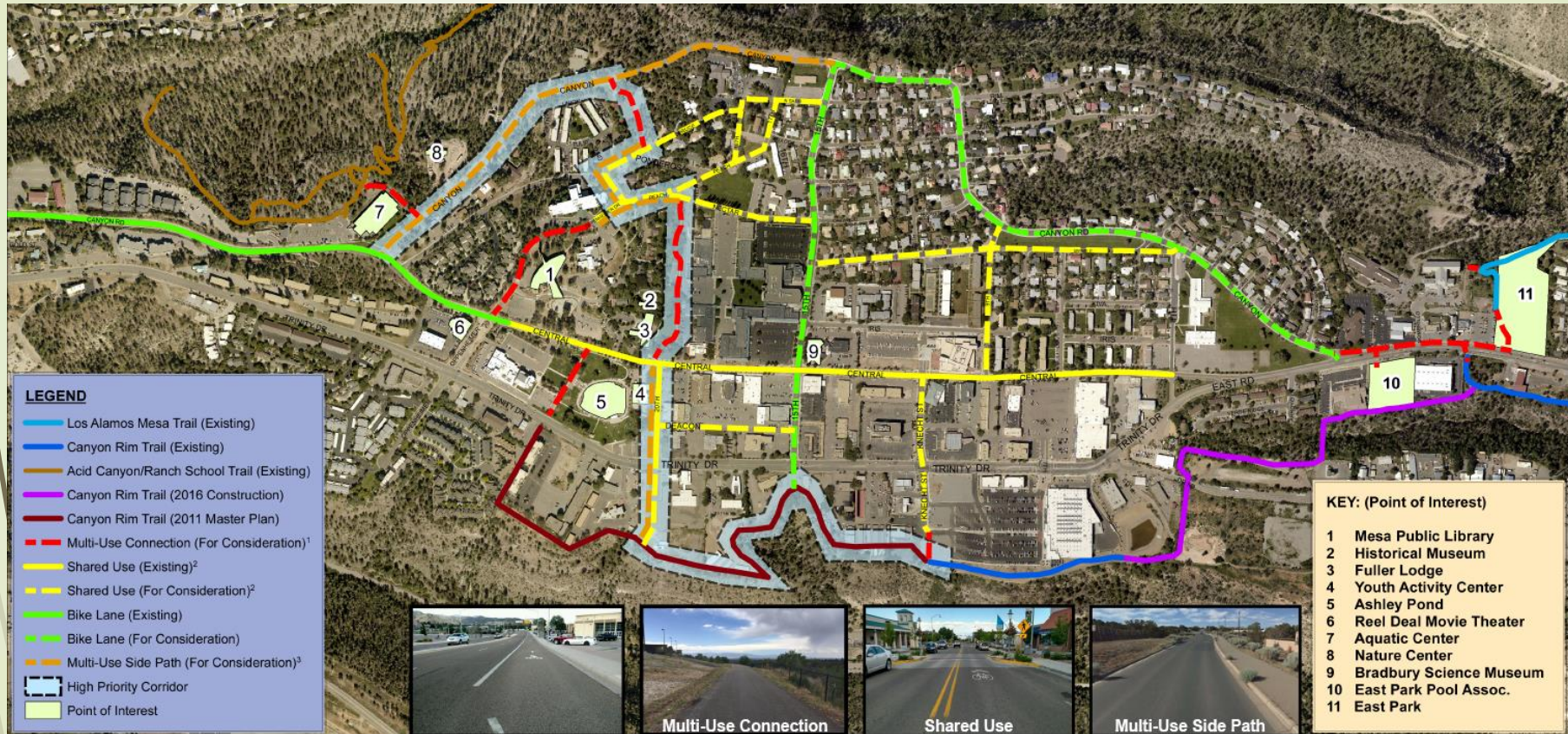


Attachment A





# Planned Improvements

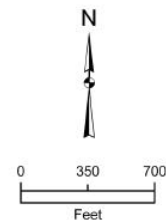


<sup>1</sup>**Multi-Use Connection (Path)** – A bikeway physically separated from motor vehicle traffic by an open space within an independent right-of-way. Multi-use paths may be used by pedestrians, skaters, wheelchair users, joggers, and other non-motorized users. Most multi-use paths are designed for two-way travel.

<sup>2</sup>**Shared Use** – A lane of traveled way that is open to both bicycle and motor vehicle travel.

<sup>3</sup>**Multi-Use Sidepath** – A path located immediately adjacent and parallel to a roadway. Multi-use sidepaths may be used by pedestrians, skaters, wheelchair users, joggers, and other non-motorized users. Most multi-use side paths are designed for two-way travel.

## Los Alamos Bicycle & Pedestrian Routes



Date: 8/10/2016





# High Priority Corridor Urban Trail Segments



- Trinity Drive to Canyon Road
- Canyon Road (Tennis Courts to Aquatic Center)



# Challenges

- Right of Way
- Obstructions
- Topography
- Funding...

# Public Information & Involvement

- Next Public Meetings
  - April 6<sup>th</sup> Transportation Board Meeting
  - April 13<sup>th</sup> Parks & Recreation Board
- Survey/Open Forum In Process
- Seeking Council Approval – May/June 2017





## Comments / Contacts:

Comment Cards: Leave with attending staff or mail to:

Public Works Department

1000 Central Avenue, Suite 160

Los Alamos, NM 87544

by April 21 , 2017

Phone: (505) 662-8150; Fax: (505) 662-8109

Email comments to: [lacpw@lacnm.us](mailto:lacpw@lacnm.us)



# Questions?



THANK YOU!

Public Works staff thanks you for  
your input!