

Bicycle Transportation Plan



Transportation Board Meeting


Incorporated County of Los Alamos
Public Works Department

Philo S. Shelton III, Department Director

Eric Martinez, County Engineer

Desirae Lujan, Engineering Project Manager

June 1, 2017



Transportation Board Bicycle Plan Subcommittee

Public Members

- Phil Gursky
- Khalil Spencer
- Jason Lott
- Craig Martin
- Brenda Fleming

County Staff

- Linda Matteson, Community Services Department
- Tamara Baer, Community Development Department
- Chris Wilson, Parks, Recreation, and Open Space
- Eric Peterson, Open Space Specialist

Plan Organization & Contents

- Executive Summary
- Introduction
- Bicycle Friendly Community
- Design Policies & Guidelines
- Bicycle Infrastructure Inventory & Completed Improvements
- ***Planned Improvements***
- Conclusion
- Exhibits
- References



Bicycle Transportation Plan

Council Adopted June xx, 2017

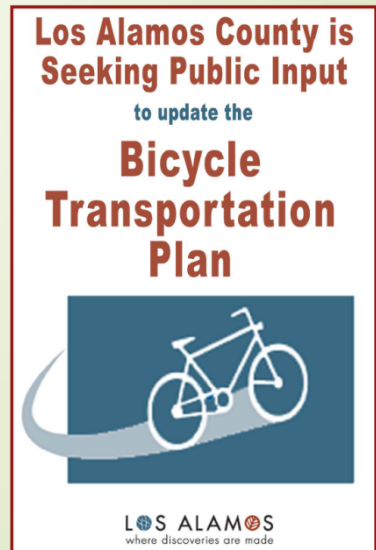


LOS ALAMOS
Public Works

Planned Improvements

Public Involvement & Input

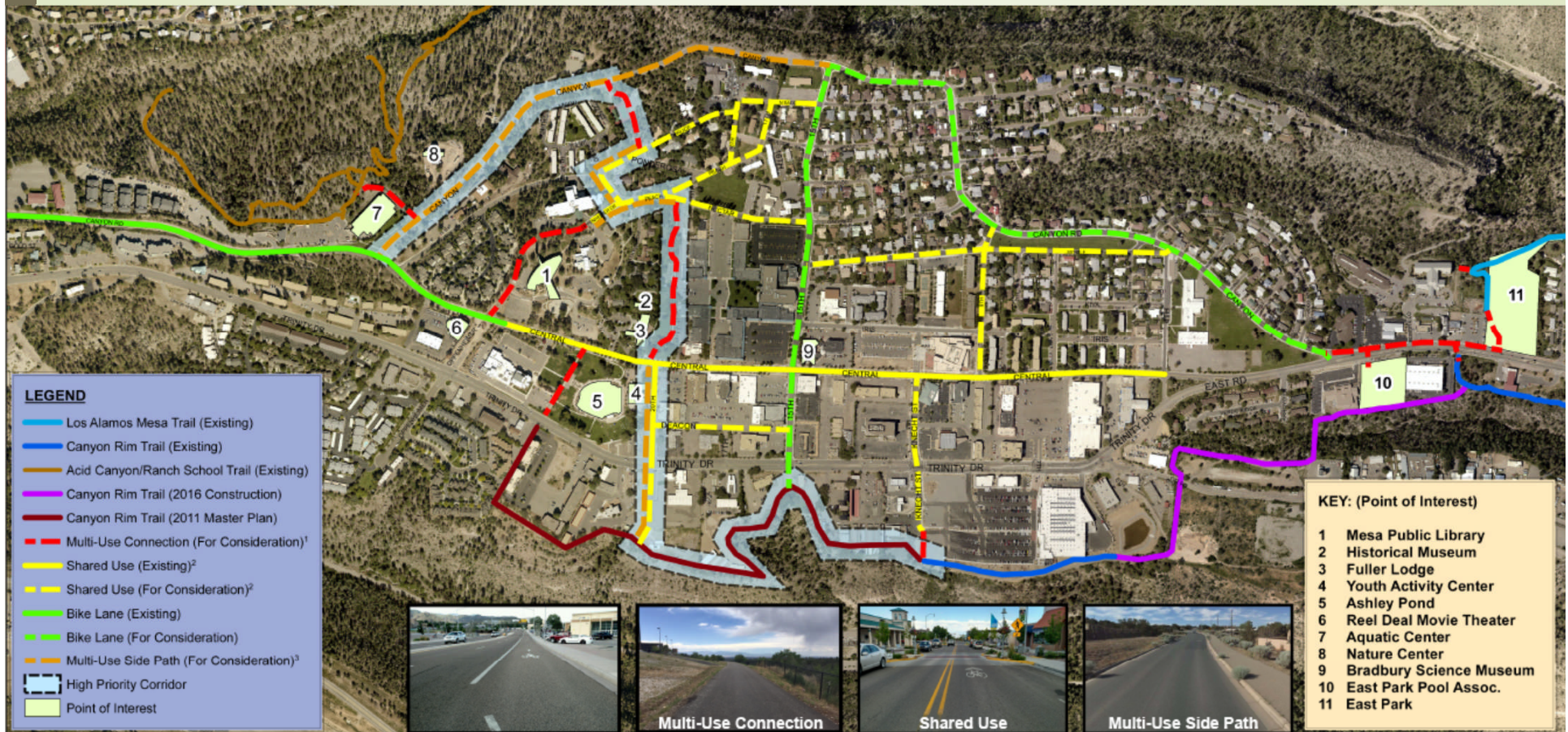
- Public Meetings – Began in March
 - Need for input from White Rock
 - Interest for Bandelier multi-use trail
- Online Public Survey (April 13-May 8th) – Public Outreach to inform public of the survey
 - Numerous routes discussed – overwhelming response for route between Los Alamos and White Rock
 - Safety needs due to distracted drivers and too few bike lanes and paths
 - Enforcement needs, maintenance of existing facilities (clear of debris, signing, markings, signalization)





Planned Improvements Los Alamos

- Multi-Use
 - Continuation of Canyon Rim Trail and connections to Trinity Drive
 - Urban Bike Path/High Priority Corridor (Plan Exhibit B)
 - Trinity Drive
- Shared use (Markings/Signing)
 - Canyon Road
- Trail Crossings
 - Trinity & 20th Street, Trinity & 15th Street
 - Underpass at Canyon Rim Trailhead at NM 502 & Camino Entrada
- Sidepath
 - Canyon Road – Rim Road to Central Avenue

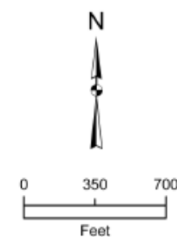


¹**Multi-Use Connection (Path)** – A bikeway physically separated from motor vehicle traffic by an open space within an independent right-of-way. Multi-use paths may be used by pedestrians, skaters, wheelchair users, joggers, and other non-motorized users. Most multi-use paths are designed for two-way travel.

²**Shared Use** – A lane of traveled way that is open to both bicycle and motor vehicle travel.

³**Multi-Use Sidepath** – A path located immediately adjacent and parallel to a roadway. Multi-use sidepaths may be used by pedestrians, skaters, wheelchair users, joggers, and other non-motorized users. Most multi-use side paths are designed for two-way travel.

Los Alamos Bicycle & Pedestrian Routes



Date: 8/10/2016



Planned Improvements White Rock

- Multi-Use
 - Enhance portions of Canada del Buey and connections.
 - Piedra Loop south of Sherwood Boulevard
 - White Rock Canyon Rim Trail
- Shared use (Markings/Signing)
 - SR4/Rover/Meadow Lane Loop
 - Grand Canyon Road
- Trail Crossings
 - Canada Del Buey – Longview/Rover & Meadow Ln./Overlook
 - Sherwood/Piedra Loop





*Multi-Use Path- A bikeway physically separated from motor vehicle traffic by an open space within an independent right of way. Multi-use paths may be used by pedestrians, skaters, wheelchair users, joggers, and other non-motorized users. Multi-use paths are designed for two-way travel.

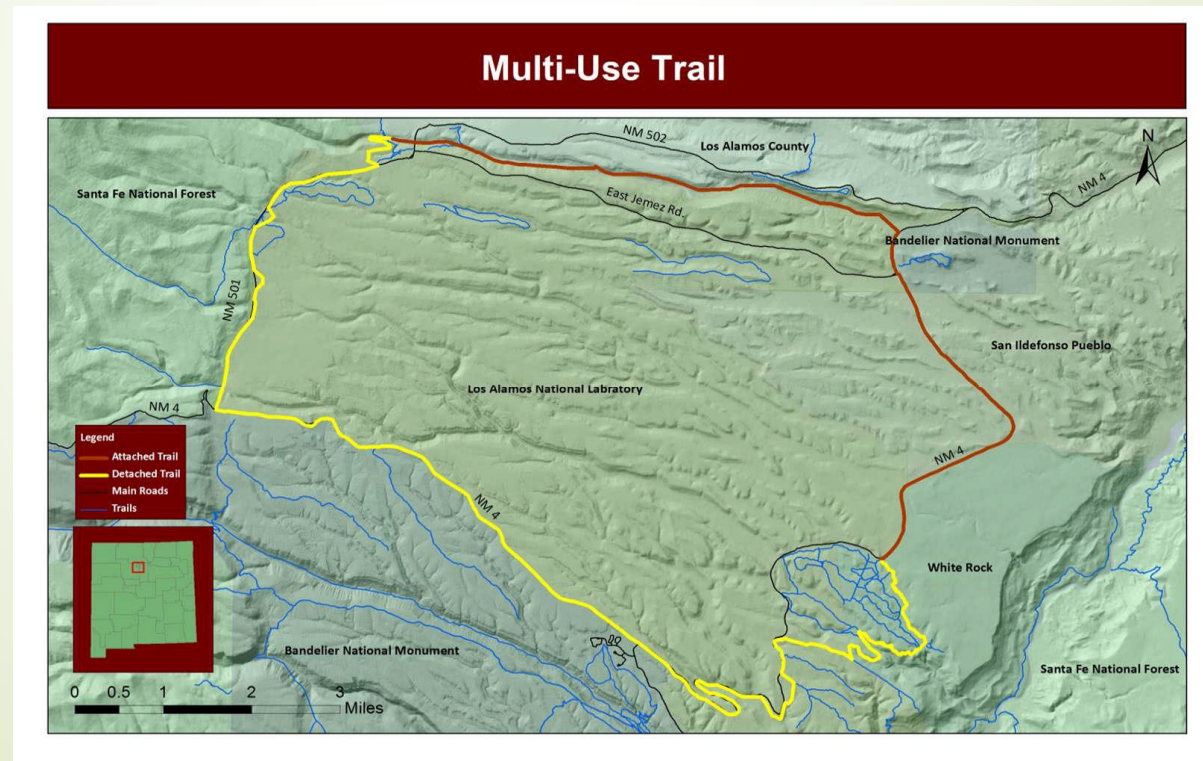
**Shared Use- A lane of traveled way that is open to both bicycle and motor-vehicle travel.

***Multi-Use sidepath- A path located immediately adjacent and parallel to a roadway. Multi-use sidepaths may be used by pedestrians, skaters, wheelchair users, joggers, and other non-



Planned Improvements Regional Planning

- State Road 4 – Rover Boulevard to East Jemez Road
 - NMDOT – 2020 Programmed reconstruction
- Bandelier Multi-Use Trail Plan





Planned Improvements Funding & Prioritization

➤ Funding Sources

- Federal – Transportation Arterial Program (TAP), Highway Safety Improvement Program (HSIP)
- State – Mainstreet grants, legislative capital outlay
- Local – Capital Improvement Program (CIP)

➤ Prioritization

- Governing Body Goals
- Public Input



Questions/Comments

County staff thanks
you for your input!

Phone: (505) 662-8150; Fax: (505) 662-8109

Email comments to: lacpw@lacnm.us