

Public Health Office (PHO) Presentation

APRIL 3, 2018



Background

- NM Public Health Act
- State PHO Requirements
- Current PHO Floorplan

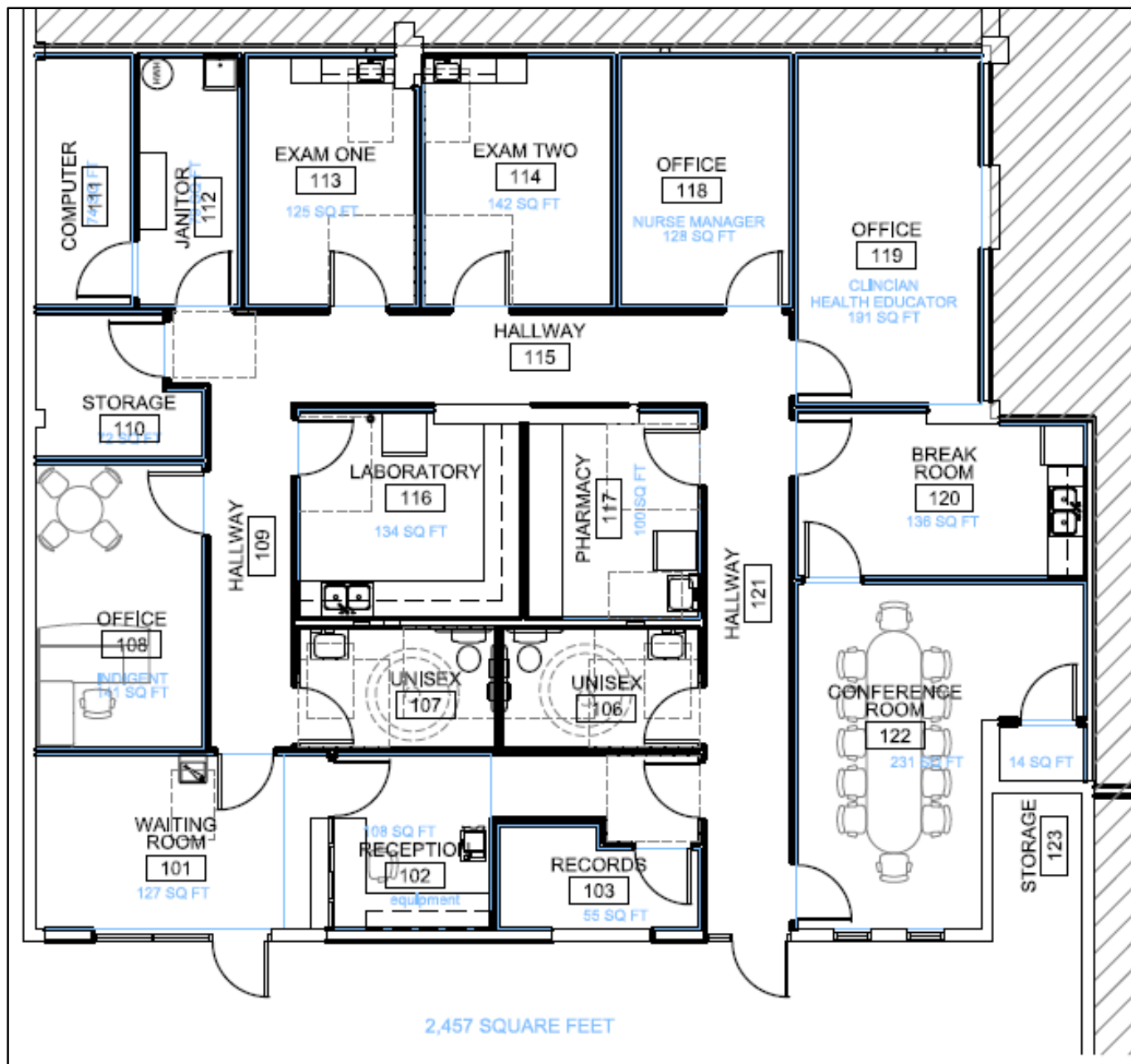
NM Public Health Act

“The board of county commissioners of each county in such health districts shall provide suitable quarters for the county health department and the district health officer, including office space for the district health officer and administrative staff, office space for physician personnel, clinic space for patients and waiting space for patients, their friends and families. The boards of county commissioners shall make proper provision for all office and other expense, including utilities and maintenance, incurred in enforcing the health laws and regulations within the counties wherein such expense is incurred...”

State PHO Requirements

Letter from Department of Health (DOH) Secretary Gallagher dated Feb. 27, 2017 with her interpretation of the Act “In order to provide the services we’ve outlined above; [sic] however, we need the following type and amount of space in which to operate:

- 1 - 10 x 10 (min) pharmacy with its own heating/cooling system and controls
- 1 - 10 x 12 exam room
- 1 - 10 x 10 office
- 1 - 10 x 10 lab with shelving
- 1 - waiting room area for 8 – 10 people
- 1 - reception area
- 1 - client restroom with pass through to lab
- 1 - staff restroom



Current PHO Floorplan

1183 Diamond Drive, Suite D
(across from LAHS)

Options Forward

1. Stay with PHO through State (DOH)
2. Contract with FQHC in conjunction with DOH services providing supplemental services

Option 1

DOH to continue operating the Los Alamos PHO

- Open hours: 1 staff on first and third Tuesday of month, 8am - 5pm
- Some of the services below are provided at the Los Alamos Public Health Office, but most services are referred to Rio Arriba Public Health Office. Services include:
 - Tuberculosis treatment
 - Sexually Transmitted Disease testing and treatment
 - Immunizations for children under 18 years of age
 - Human Immunodeficiency Virus counseling and testing

Option 1 (cont'd)

- Breast and cervical cancer screenings
- Family Planning – limited services provided in Los Alamos
- Women Infant and Children (WIC) Program – 1 staff every second Thursday of the month
- Children's Medical Service Program (CMS) – by appointment only

Option 2

Contract with FQHC to operate the Los Alamos PHO with DOH providing supplemental services

- Our FQHC currently operates health centers in Rio Arriba, San Miguel, and Taos
- Proposed Hours:
 - 2 days per week
 - 7:30am – 4:00pm for students
 - 4:00 – 6:30pm for the general public
- Timeline: 6 months to a year following approval

Option 2 (cont'd)

- Proposed FQHC services include:
 - Family Planning
 - Primary Medical Care
 - All Standard Medical Procedures
 - Annual or Sports Physicals
 - Well Child
 - Behavioral Health Services
 - Immunizations
 - Diabetes Prevention & Control
 - Nutrition Counseling
 - Weight Management
 - Asthma Services
- DOH supplemental services include:
 - Women Infant and Children
 - Child Medical Service Program
 - Others as appropriate

Option 2 (cont'd)

Estimated Annual Expenses	
Personnel	\$ 130,000
Operating and Administration	\$ 60,000
Total Annual Expenses	\$ 190,000

Estimated Start-up Expenses	
Licenses & Equipment	\$ 20,000
Initial Renovation	\$ 20,000
Total Start-up Expenses	\$ 40,000

Estimated Annual Revenue	
Projected FQHC Income through billing	\$ 50,000
Projected LAC operating budget *	\$ 130,000
Proposed LAPS Subsidy	\$ 20,000
Total Annual Revenue	\$ 200,000

Shortage	\$ (30,000)
-----------------	--------------------

* \$80,000 is in base budget, \$50,000 is an FY19 Add Option