

VACATION OF UTILITY EASEMENT

NAME: Incorporated county of Los Alamos

PROPERTY ADDRESS: 3580 Canyon Road, Los Alamos, NM 87544

TRACT: G-A, SUBDIVISION: Eastern Area No. 3

The incorporated county of Los Alamos has determined that the county no longer requires and hereby vacates the utility easement described as follows:

DESCRIPTION

That utility easement lying and being with Tract G-A, of Tract G, Eastern Area No. 3, Los Alamos County, New Mexico, the plat thereof being filed for record in the Office of the County Clerk in Plat Book 7, Page 81, on the 19th Day of September 2000. As shown on Exhibit "A" attached hereto.

This vacation of Utility Easement in no way effects, reduces or diminishes any other Easement or Usage, either Drainage or Utility, held by the incorporated county of Los Alamos except as herein specifically provided.

THIS VACATION OF UTILITY EASEMENT HAS BEEN REVIEWED BY ME AND IS ACCEPTABLE TO THE DEPARTMENT THAT I REPRESENT:

 5/30/18

COUNTY ENGINEER

DATE

 5/30/18

COUNTY SURVEYOR

DATE

 5/30/18

DEPARTMENT OF PUBLIC UTILITIES DATE

THE VACATION OF UTILITY EASEMENT HEREIN DESCRIBED IS HEREBY ACCEPTED PURSUANT TO AUTHORITY GIVEN BY THE LOS ALAMOS COUNTY COUNCIL.

ATTEST:

INCORPORATED COUNTY OF LOS ALAMOS

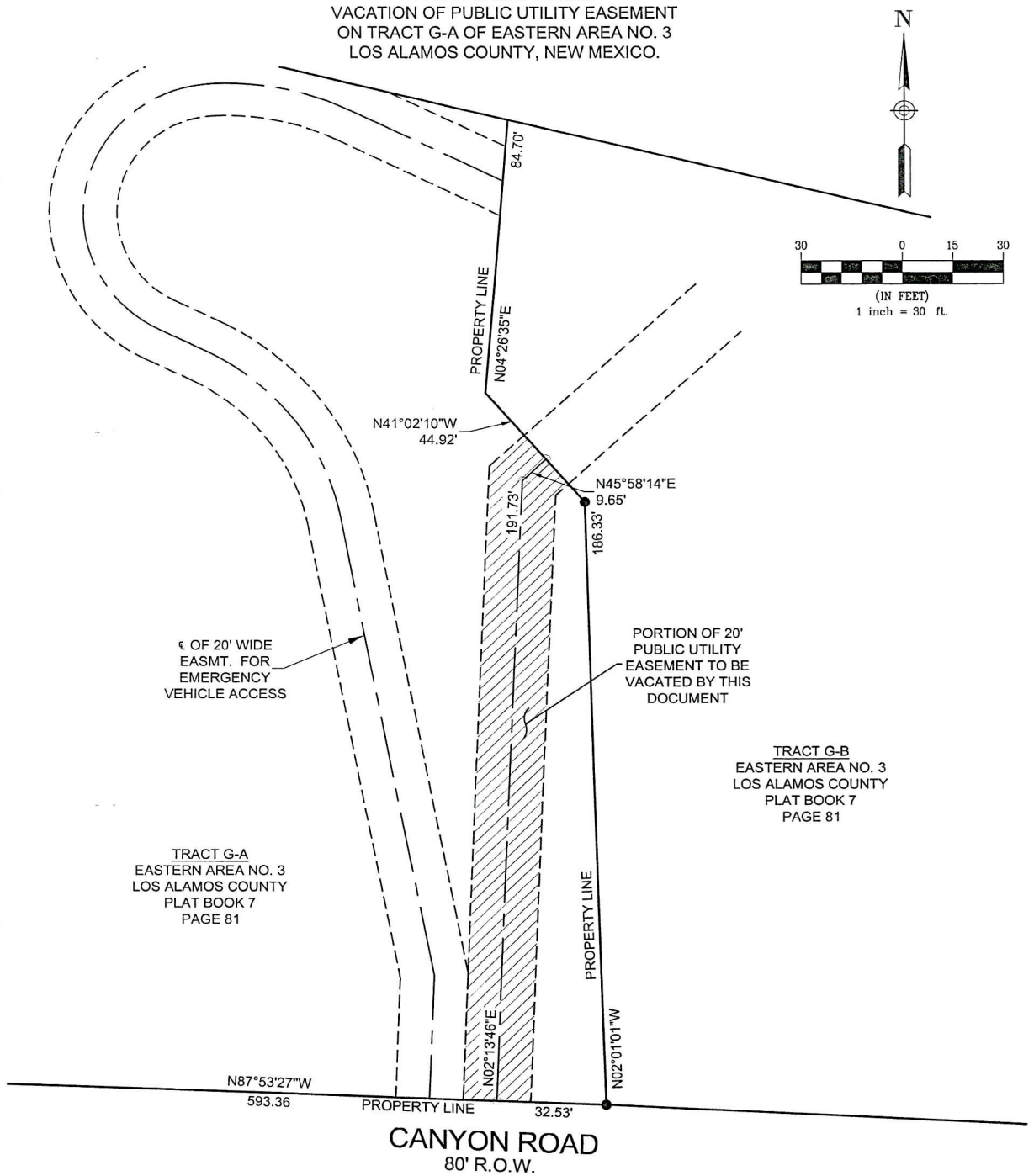
BY: _____

NAOMI MAESTAS, COUNTY CLERK

DATE

EXHIBIT A

PLOT PLAN SHOWING
VACATION OF PUBLIC UTILITY EASEMENT
ON TRACT G-A OF EASTERN AREA NO. 3
LOS ALAMOS COUNTY, NEW MEXICO.



SURVEYOR'S CERTIFICATE

THE FOREGOING EXHIBIT WAS PREPARED FROM INFORMATION SHOWN ON THE PLAT OF LOT LINE ADJUSTMENT BETWEEN TRACT G-A AND G-B OF TRACT "G" EASTERN AREA NO. 3 LOS ALAMOS COUNTY, NEW MEXICO RECORDED IN THE OFFICE OF THE LOS ALAMOS COUNTY CLERK IN PLAT BOOK 7 PAGE 81 ON SEPTEMBER 19, 2000, AS DOCUMENT NO. 146170.

Jason A. Romero
JASON A. ROMERO, N.M.P.L.S. NO. 18375
County of Los Alamos-Public Works Dept., Engineering. Div.
1000 Central Ave., Suite 160
Los Alamos, New Mexico 87544
Ph. (505)662-8150



LEGEND

- FOUND 1/4" REBAR W/CAP
- ⑦ TELCOM. MANHOLE
- ⊙ ELECTRIC MANHOLE
- ⊙ SANITARY SEWER MANHOLE
- ⊙ WATER VALVE
- ⊙ STREET LIGHT POLE
- ||||| PORTION OF EASEMENT TO BE VACATED