

VACATION OF UTILITY EASEMENT

NAME: Los Alamos Professional Investment Partnership

PROPERTY ADDRESS:, 557 Oppenheimer Dr. Los Alamos, N.M. 87544

LOT: Two , “Trinity / Oppenheimer Subdivision”

The Incorporated County of Los Alamos has determined that the County no longer requires and hereby vacates the utility easements described as follows:

DESCRIPTION


That 42’ wide “steam easement” granted by “Timber Ridge Subdivision Unit Two” April 1978, recorded as document #44410 in book 3 page 64; subsequently lying and being within Lot Two, “Trinity / Oppenheimer Subdivision” being a subdivision of Tract “A”, replat of Timber Ridge Subdivision, Unit 2, Los Alamos County, New Mexico, the Plat thereof filed for record in the Office of the Clerk as Document No.83309 on the 20th of October, 1988 in Plat Book 5, Page 86, as shown on that Plot Plan, dated the 12th of September, 2018 marked Exhibit “A”, attached hereto and made apart hereof.

This Vacation of Utility Easement in no way effects, reduces or diminishes any other Easement or Usage, either Drainage or Utility, held by the Incorporated County of Los Alamos except as herein specifically provided. All other Grants of Easement, whether Drainage or Utility, shall be and remain in full force and effect.

THIS VACATION OF UTILITY EASEMENT HAS BEEN REVIEWED BY ME AND IS ACCEPTABLE TO THE DEPARTMENT THAT I REPRESENT:

 9/19/18

COUNTY ENGINEER DATE

 9/17/18

COUNTY SURVEYOR DATE

 9/27/18

DEPARTMENT OF PUBLIC UTILITIES DATE

ATTEST:
Naomi Maestes

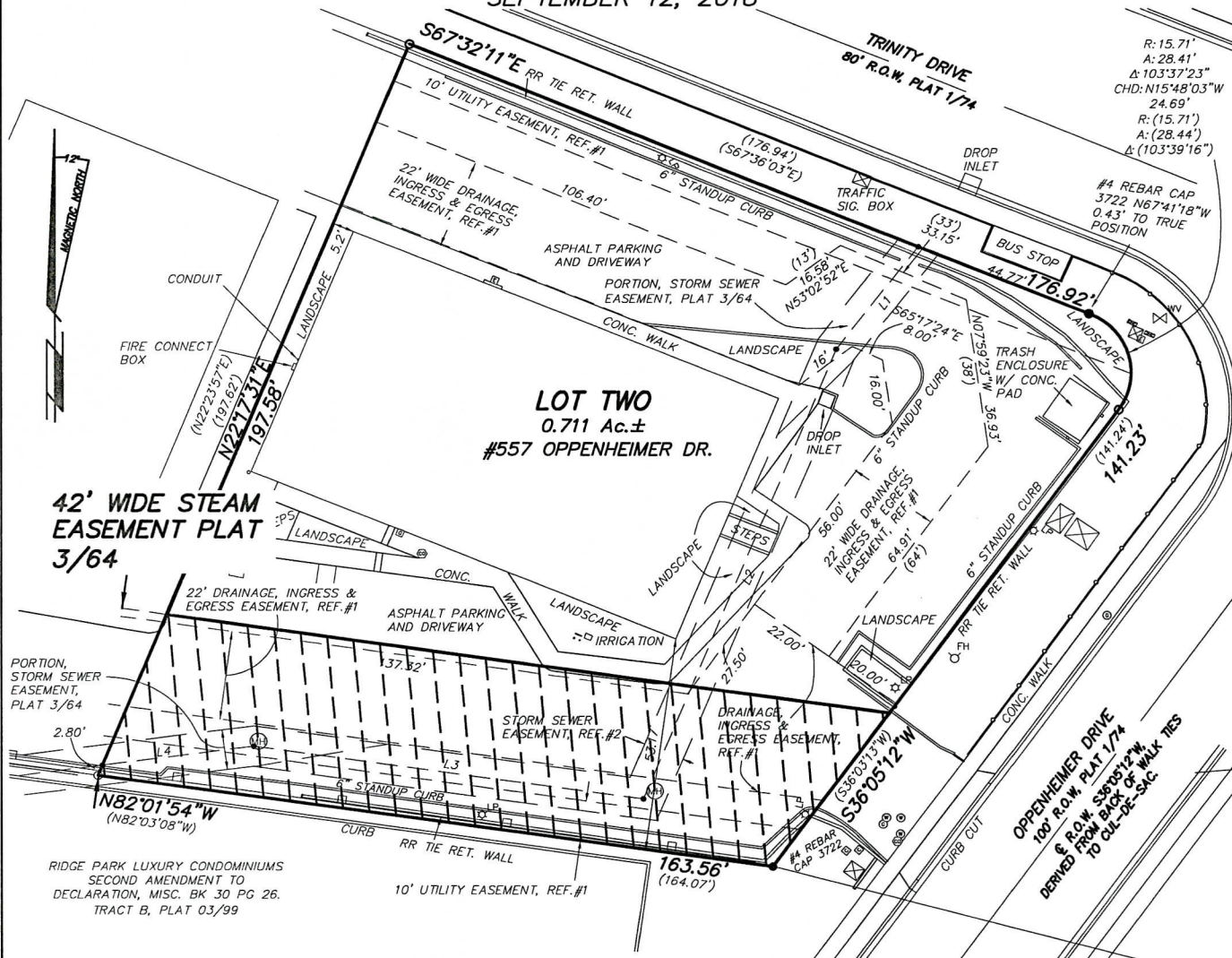
INCORPORATED COUNTY OF LOS ALAMOS

By: _____
County Clerk

COUNCIL CHAIRPERSON DATE

**PLOT PLAN
SHOWING
VACATION OF PUBLIC UTILITY EASEMENTS
WITHIN A PORTION OF LOT TWO "TRINITY / OPPENHEIMER SUBDIVISION"
"TRINITY / OPPENHEIMER SUBDIVISION" BEING A SUBDIVISION OF TRACT "A",
REPLAT OF TIMBER RIDGE SUBDIVISION, UNIT 2,
LOS ALAMOS COUNTY, NEW MEXICO,**

SEPTEMBER 12, 2018



SURVEYORS CERTIFICATE:

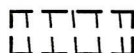
THE FOREGOING EXHIBIT WAS PREPARED FROM A COMPLETED BOUNDARY SURVEY BY ME ON JULY 27, 2018 TO BE FILED SUBSEQUENT TO THIS DOCUMENT. THIS EXHIBIT IS TRUE AND CORRECT TO THE BEST OF MY KNOWLEDGE AND BELIEF, AND MEET THE MINIMUM STANDARDS FOR SURVEYS IN NEW MEXICO.

Diego J. Sisneros
DIEGO J. SISNEROS, N.M.P.L.S. #13986 9/12/2018

PLAT REFERENCE:

"TRINITY / OPPENHEIMER SUBDIVISION" BEING A SUBDIVISION OF TRACT "A", REPLAT OF TIMBER RIDGE SUBDIVISION, UNIT 2, LOS ALAMOS COUNTY, NEW MEXICO, THE PLAT THEREOF FILED FOR RECORD IN THE OFFICE OF THE CLERK AS DOCUMENT NO.83309 ON THE 20TH OF OCTOBER, 1988 IN PLAT BOOK 5, PAGE 86

LEGEND:



PORTION OF 42' WIDE STEAM EASEMENT PLAT BK. 3 PG. 64, HEREBY VACATED.

OVERLAPPING EASEMENTS SHOWN WITHIN THIS AREA ARE NOT INCLUDED IN THIS VACATION AND ARE SHOWN FOR BACKGROUND INFORMATION ONLY.



SCALE 1"=40 FEET



EXHIBIT B



DAWSON SURVEYS INC.
PROFESSIONAL LAND SURVEYORS
2502B CAMINO ENTRADA
SANTA FE, N.M. 87507
FILE#10107VAC DATE: 9/12/2018