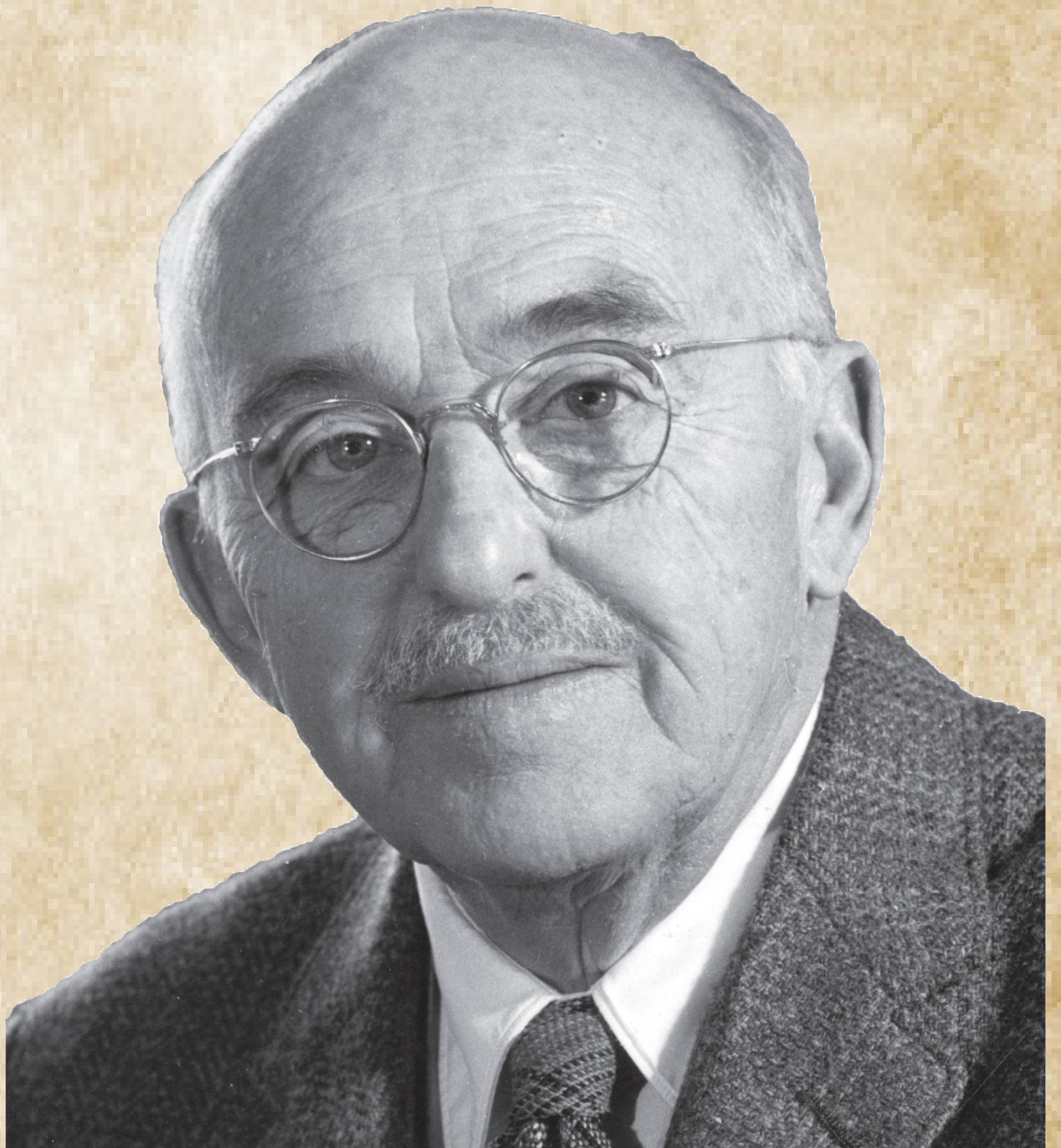
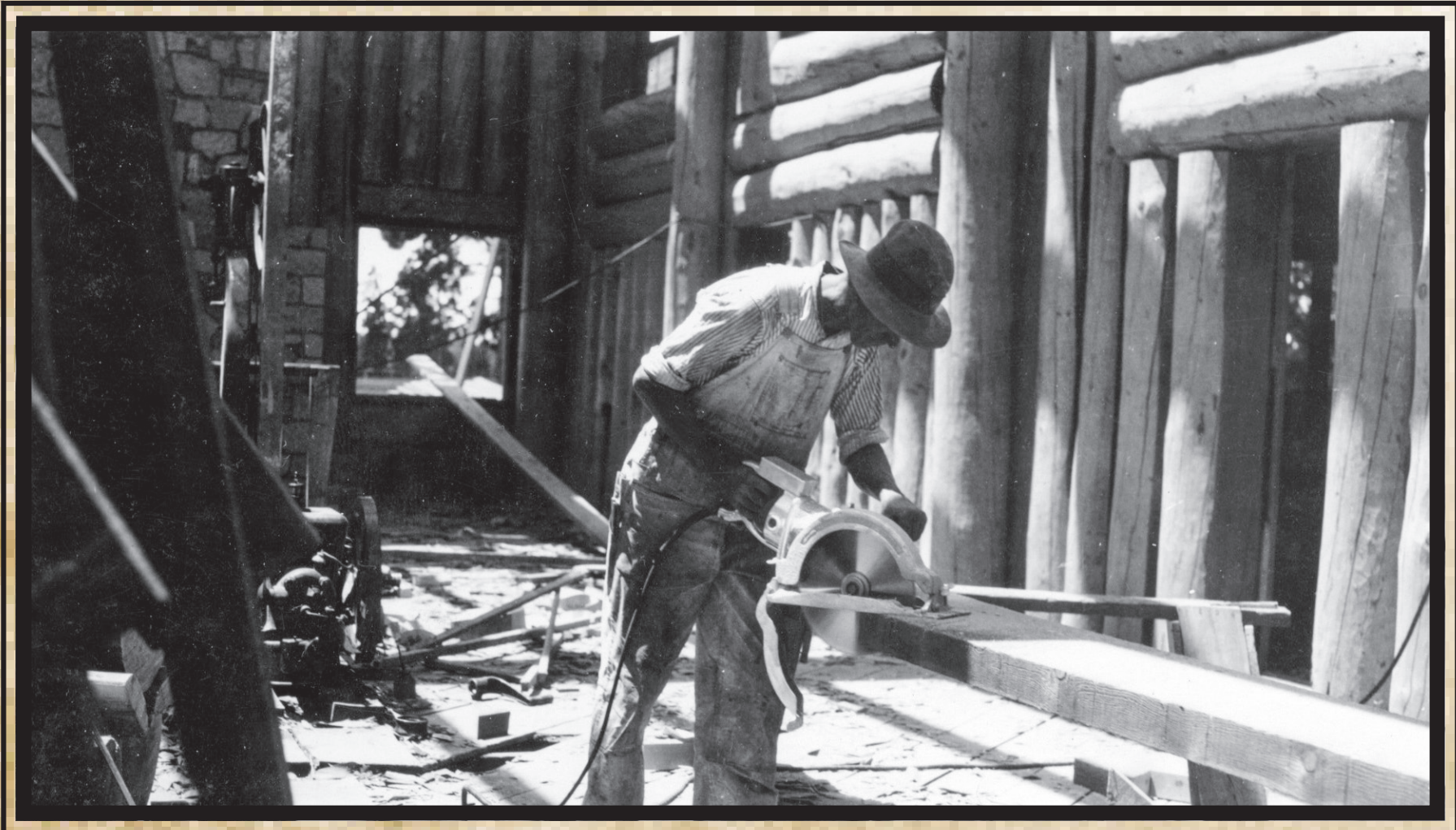


Building the Lodge...

Fuller Lodge was constructed as a memorial to Edward P. Fuller, a Ranch School staff member who died in 1923. His father, wealthy Michigan lumberman Philo C. Fuller, paid for the construction of the Lodge and donated it to the Ranch School. Built in 1928, the Lodge was designed by influential Santa Fe architect John Gaw Meem. As the center of a campus of log-and-stone buildings during the Ranch School era, the Lodge embodied what director A. J. Connell wanted the boys at his school to aspire to—"rugged, close to nature, standing tall, and solidly planted in a firm foundation."



Architect John Gaw Meem, who, along with Ranch School Director A. J. Connell, personally selected the 771 massive pine trees used in the predominantly vertical-log structure.