

A photograph of several recycling bins in an outdoor setting. In the foreground, a blue recycling bin is prominent on the left, and a black recycling bin is to its right. In the background, another black bin is visible. The bins are set against a backdrop of green foliage and a light-colored wall. A semi-transparent dark blue rectangular box is overlaid on the center of the image, containing white text.

UPDATE ON SAYT RESEARCH SUBCOMMITTEE ACTIONS

# SAVE AS YOU THROW FOR LOS ALAMOS

July 18, 2019 Presentation to ESB



# Subcommittee Goals



The purpose of the SAYT Research Subcommittee is to

- **research** tiered rate structures for Los Alamos County residential solid waste services,
- **gather public input** regarding a tiered rate structure and
- **provide a recommendation** to the Environmental Sustainability Board.

---

# Education and Outreach Activities

APRIL 15 TO PRESENT

- Educational webpages at Environmental Services website, including graphics, calendar, resource list and Frequently Asked Questions (FAQs)
- Outreach booths at Earth Day, Farmers' Markets (2), ChamberFest, Discovery Day
- Presentations to Voices of Los Alamos and ESB
- Articles in Daily Post, LA Monitor and Reporter
- Social media announcements
- Open House
- Monthly email blasts with upcoming events
- Bi-weekly Subcommittee meetings
- Ongoing collection of public comments and questions



# EDUCATIONAL MATERIALS

- Informational handouts
- Posters
- Social media graphics and text
- Website with graphics, calendar, resource list and FAQs

## PUBLIC COMMENT SOLICITATION

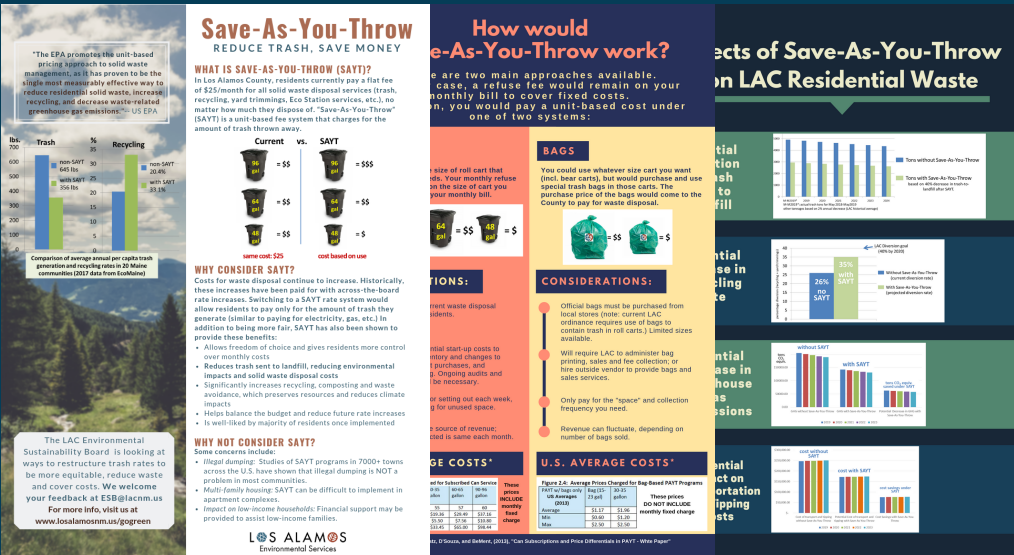
- Comments and questions recorded on notepads at every outreach event
- Survey form at Open House
- Poll Everywhere interactive poll at Open House
- Request for comments to ESB@lacnm.us
- Comments solicited from Environmental Services employees
- Comments solicited from businesses potentially affected by SAYT

## THE PUBLIC IS INVITED TO ATTEND A **SAVE-AS-YOU-THROW** OPEN HOUSE



### WHAT IS SAVE-AS-YOU-THROW (SAYT)?

SAYT is a unit based fee system that charges for the amount of trash you throw away.





---

# Public Comments

RECEIVED SINCE APRIL

**QUESTIONS (AND  
QUESTIONS MADE  
FROM COMMENTS)  
POSTED TO FAQ  
PAGE ON WEBSITE,  
JULY 9**

- Emails: 9
- Open House: Surveys 11
  - Poll Anywhere: 19
- Comments recorded: 72

## SAVE AS YOU THROW (SAYT) FREQUENTLY ASKED QUESTIONS

Questions have been drawn from public outreach events (booths, meetings) and sent to the Environmental Sustainability Board ([ESB@lacnm.us](mailto:ESB@lacnm.us)). Source information on SAYT can be found on our [Resources](#) web page.

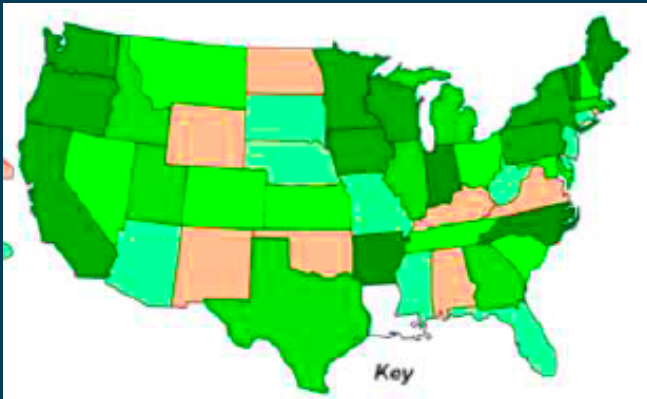
In one word describe how you feel about Save-As-You-Throw

A word cloud of responses to the question 'In one word describe how you feel about Save-As-You-Throw'. The words are arranged in a cluster, with 'great' at the top, 'next' and 'environment' below it. 'smart' is on the left, 'fair' and 'quality' in the center, 'reduce' below 'smart', 'innovative' below 'fair', 'step' to the right of 'innovative', 'fantastic' on the far right, 'responsible' below 'reduce', 'expensive' below 'innovative', 'hi' below 'expensive', 'sustainability' below 'responsible', and 'necessary' at the bottom.

great  
next environment  
smart fair quality step  
reduce innovative fantastic  
responsible expensive hi  
sustainability  
necessary

# Research Efforts

LEARNING ABOUT SAYT FROM 7000+ U.S. COMMUNITIES, STATES AND EPA, ABOUT THEIR EXPERIENCE OVER THE PAST 25+ YEARS



## INTERNET RESEARCH

Data gathering on SAYT topics including:

- SAYT planning and implementation
- Academic, governmental and consultant research
- Rate setting
- Issues and Resolutions
- Results/Benefits
- Public perception/resident satisfaction
- SAYT programs in other communities

## OUTREACH TO OTHER COMMUNITIES

Calls and emails to communities with SAYT in place, to gather experiences from:

- Silver City, NM
- Golden, CO
- Longmont, CO
- Seattle, WA
- Ashland, MA
- Bloomington, IN
- Cranberry Twp, PA
- S. Kingston, RI
- Hermitage, PA

## OUTREACH TO LOCAL BUSINESSES

How will SAYT impact Los Alamos businesses?

- Discussions about illegal dumping
- Impact to thrift stores, and how to mitigate
- Potential bag vendors (for bag-based SAYT)



# Bags!

## COSTS RECOVERED THRU BAG SALES

Bags sold at local grocers and other stores

## ACCURATELY "METERS" TRASH

Only pay for number of bags needed, not "air"

## USE ANY CART, ANY TIME

Keep current cart, share carts, use bear carts, any collection frequency

## REVENUE TO COUNTY CAN FLUCTUATE

IMPLEMENTATION WILL REQUIRE EDUCATION AND ENFORCEMENT



# Cans!

## MONTHLY CHARGE BASED ON CART SIZE

Will require initial audit, change-outs, and ongoing tracking of roll carts

## NO SPECIAL BAGS NEEDED

Use recycled bags if desired

## STABLE REVENUE SOURCE FOR COUNTY

IMPLEMENTATION WILL REQUIRE EDUCATION AND ENFORCEMENT



---

# What have we learned?

- **A lot! Residents are very helpful, asking excellent questions.**
- **No deal-killers yet!**
- **Comments have been generally positive (or neutral/questions)**
- **Even split on carts vs. bags. Need to work up rate structure for both.**
- **Probably need more education leading up to Open Forum poll, for best results**
- **A consultant could be helpful re. rate setting, implementation tips**
- **Consider including costs and approaches for adding weekly recycling and/or composting to program?**



# Next Steps

## IN ADDITION TO ONGOING GENERAL RESEARCH AND CONTINUED OUTREACH/EDUCATION

