

Valles Caldera National Preserve
National Park Service
U.S. Department of the Interior



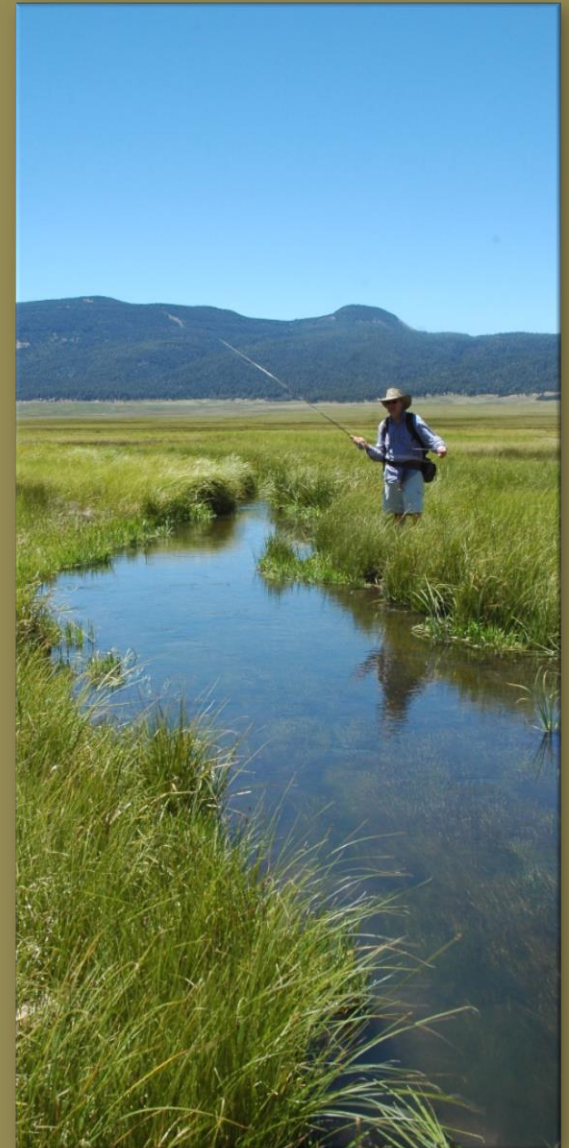
Park Operations Update

Los Alamos County Council Work Session

August 20, 2019

Visitor Programs

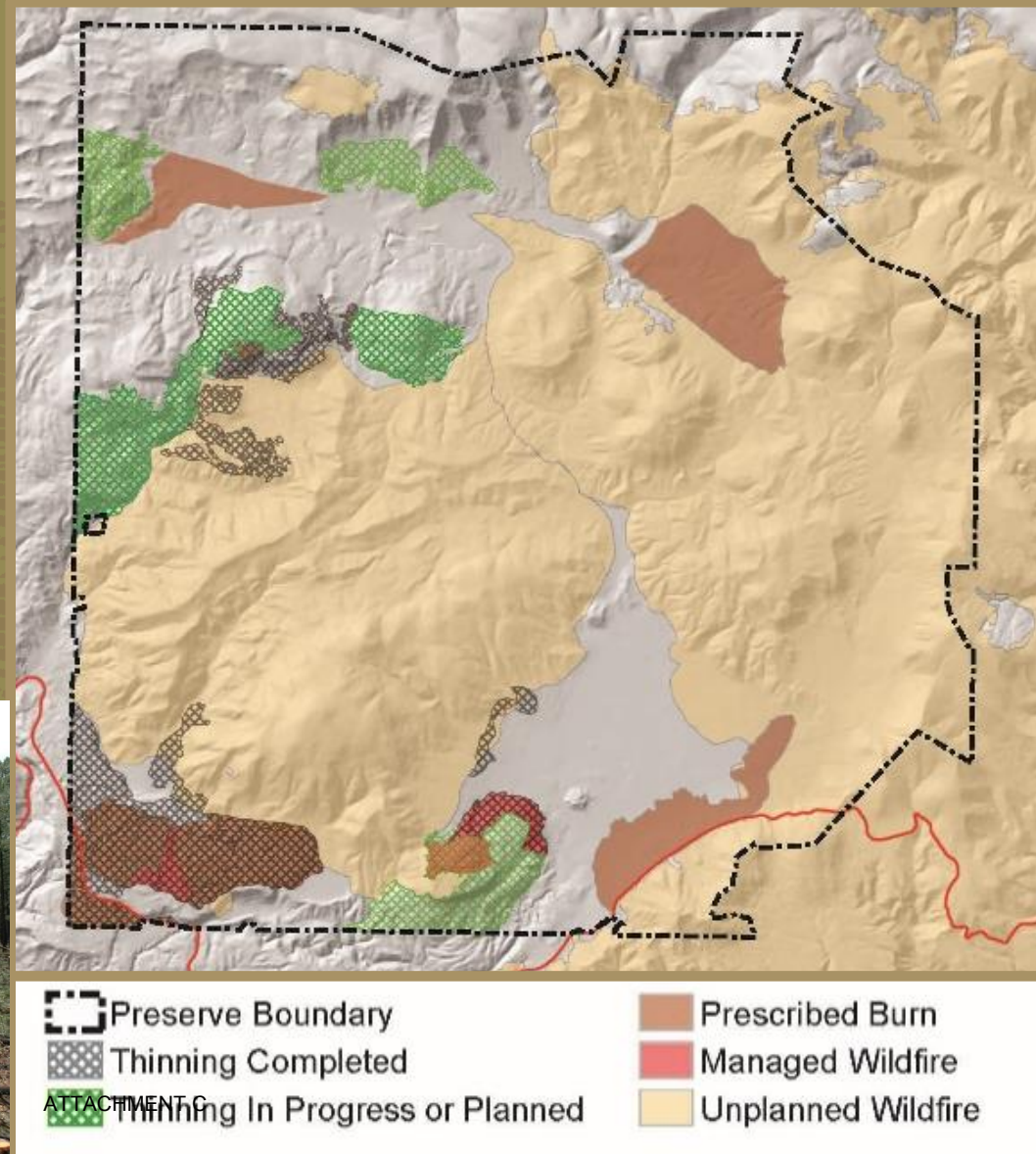
- Visitation: ~50,000 / year
- Fee program remains suspended
- Ranger-led visitor programs:
 - Porch talks (daily)
 - Walks (weekly): wildflowers, historic cabins
 - Fly fishing clinic (monthly)
 - September: star gazing programs begin
- Cabin District & History Grove Shuttle
 - (Fri, Sat, & On Demand)
- Backcountry Driving Route: 35 vehicles at a time
- Vehicle tours: PEEC, Los Amigos de Valles Caldera
- Special events: **FIESTA EN EL VALLE** (June)
- Fishing: Special trout waters on all streams
- Hunting: Elk - Sept 1-Dec 5; Turkey – Apr 15-30



Ecological Restoration

Forest treatments:

- Tree thinning
- Prescribed burns
- Managed natural fires

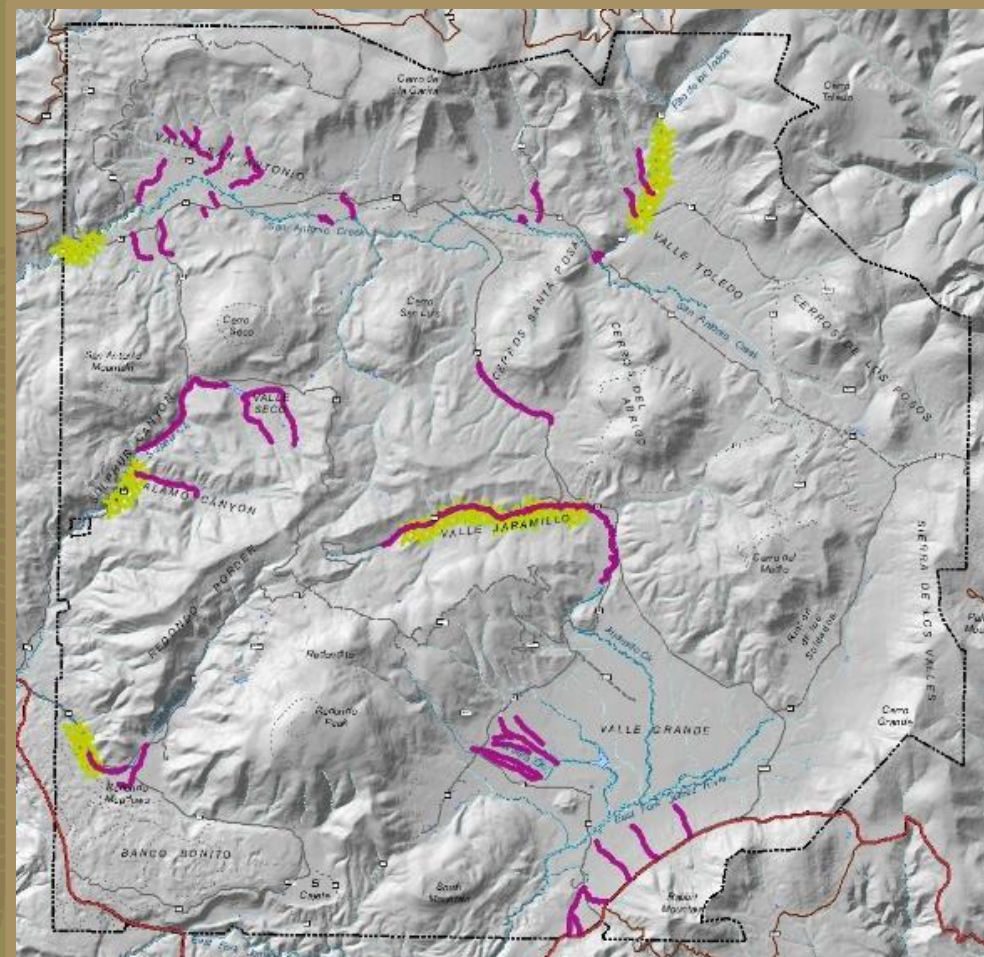


ATTACHMENT C

Ecological Restoration

Wetlands restoration:

- Mechanical earthmoving and hand rockwork to repair stream channels and restore riparian areas
- Los Amigos de Valles Caldera
- Albuquerque Wildlife Federation
- WildEarth Guardians



Wetlands Restoration Type



Plantings/Exclosures



Stream Channel/Wetlands

Pond

Wetland

Perennial Streams

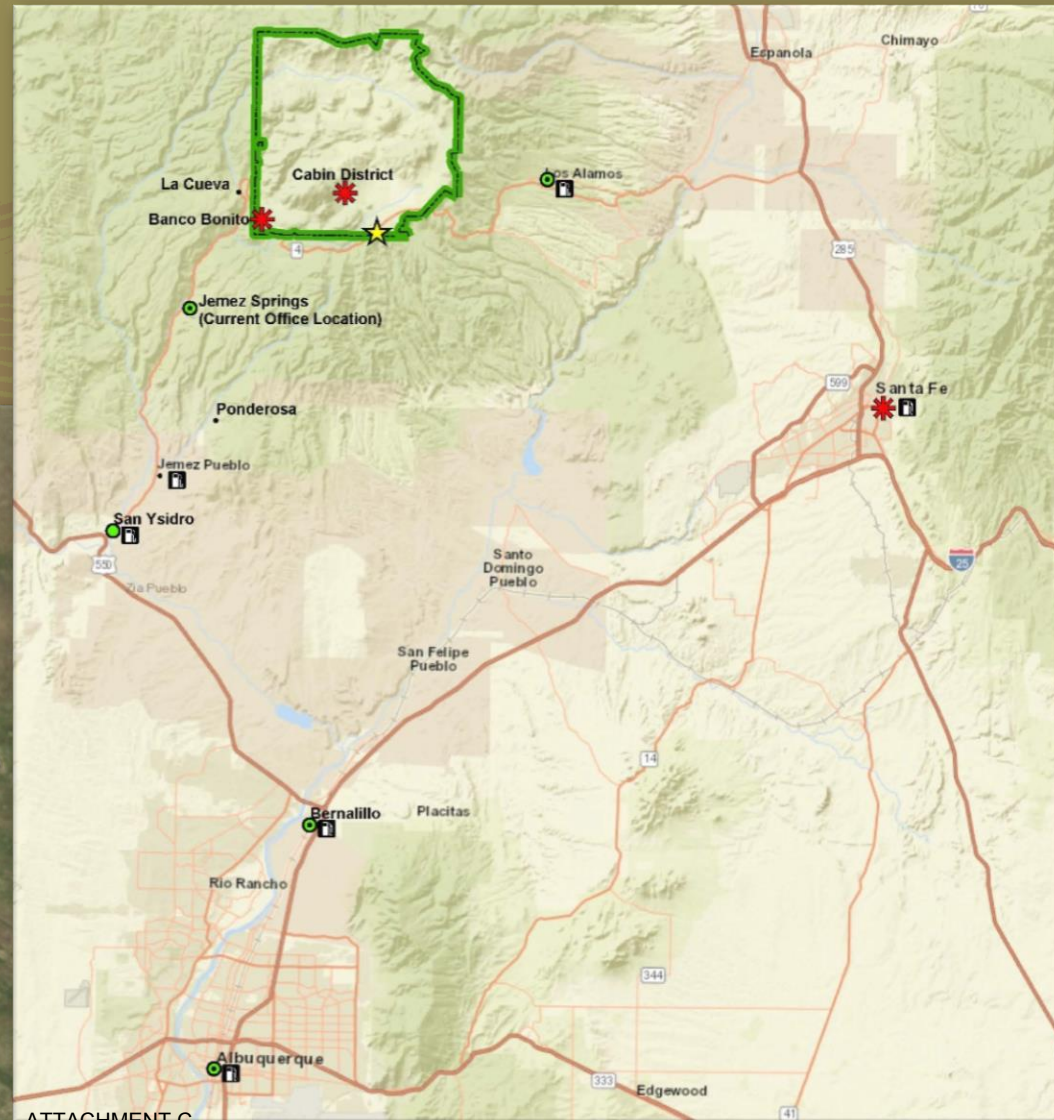
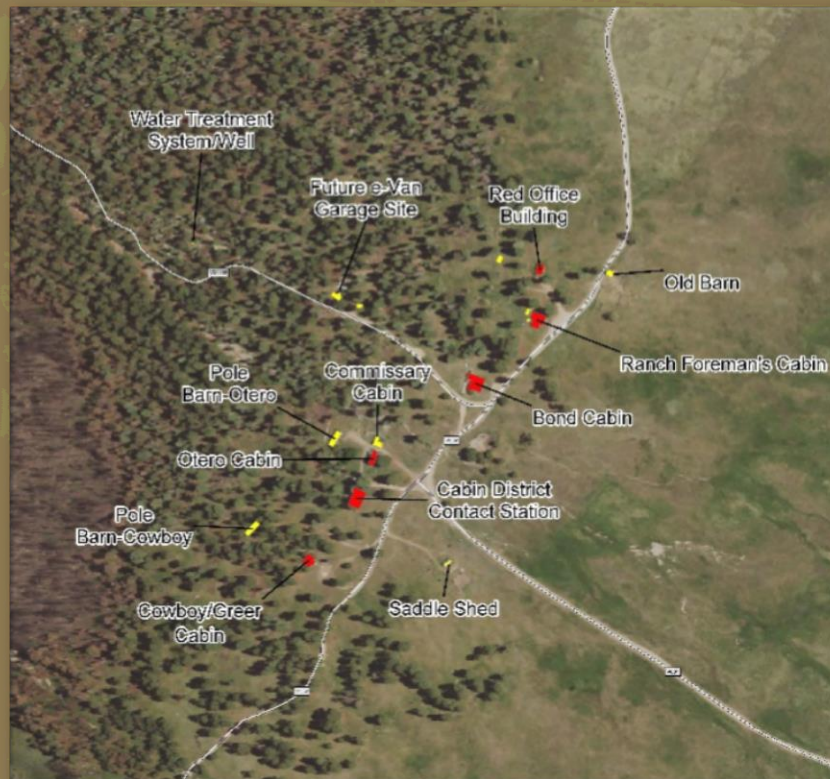
Intermittent streams

Preserve Boundary

ATTACHMENT C

Headquarters Relocation

- Current location: Jemez Springs
 - Santa Fe
 - Bernalillo
 - Los Alamos
 - Preserve



ATTACHMENT C

OUR AMERICA

Planning



Facilities and Lands

- Road maintenance - ~2 miles / year of improved gravel roads (\$133k)
- Boundary fence replacement - ~4 miles/year (\$77k)
- Stabilize and rehab cabins: Bond (FY19 \$335k), Foreman's (FY20 \$245k), and Cowboy (FY21 \$100k)
- Sulphur Springs inholding (\$545k LWCF)
 - Mine reclamation (FY22 \$500k)
- Trails Improvements (FY21 \$410k)
- Cabin District water system (FY24 \$2.0m)
- Geothermal wells closure (FY22 \$1.6m)



Questions?

