

**INCORPORATED COUNTY OF LOS ALAMOS ORDINANCE NO. 696**

**AN ORDINANCE PROVIDING FOR THE TRANSFER OF APPROXIMATELY  
87,976 SQUARE FEET, OR 2.02 ACRES ±, OF LAND OWNED BY THE  
INCORPORATED COUNTY OF LOS ALAMOS TO THE BOARD  
OF THE LOS ALAMOS PUBLIC SCHOOLS**

**WHEREAS**, the Incorporated County of Los Alamos ("County") has agreed to convey approximately 87,976 square feet of County land, the description of which is attached hereto as Exhibit "A", to the Board of the Los Alamos Public Schools ("Schools"); and

**WHEREAS**, County and Schools mutually agree that the land transfer is in the best interest of both parties; and

**WHEREAS**, the transfer shall be subject to the execution and performance by the parties, or their designated and authorized representatives, of all documents, including quitclaim deeds, free and clear of any encumbrances, and the filing thereof with any and all proper authorities or entities.

**BE IT ORDAINED BY THE GOVERNING BODY OF THE INCORPORATED COUNTY  
OF LOS ALAMOS:**

**Section 1.** Pursuant to Section 14-31 of the Code of Ordinances of the Incorporated County of Los Alamos, a total of approximately 87,976 square feet of County-owned land, the description of which is attached hereto as Exhibit "A", shall be conveyed by quitclaim deed to the Schools.

**Section 2.** County Staff is hereby directed to prepare all documents necessary to effect the conveyance, and the Council Chair is hereby authorized to execute all documents necessary to effect the conveyance on behalf of County.

**Section 3.** This Ordinance shall be effective thirty (30) days after publication of notice of its adoption. Publication shall be made by general summary.

**ADOPTED** this the 27<sup>th</sup> day of August, 2019.

**COUNCIL OF THE INCORPORATED  
COUNTY OF LOS ALAMOS**

---

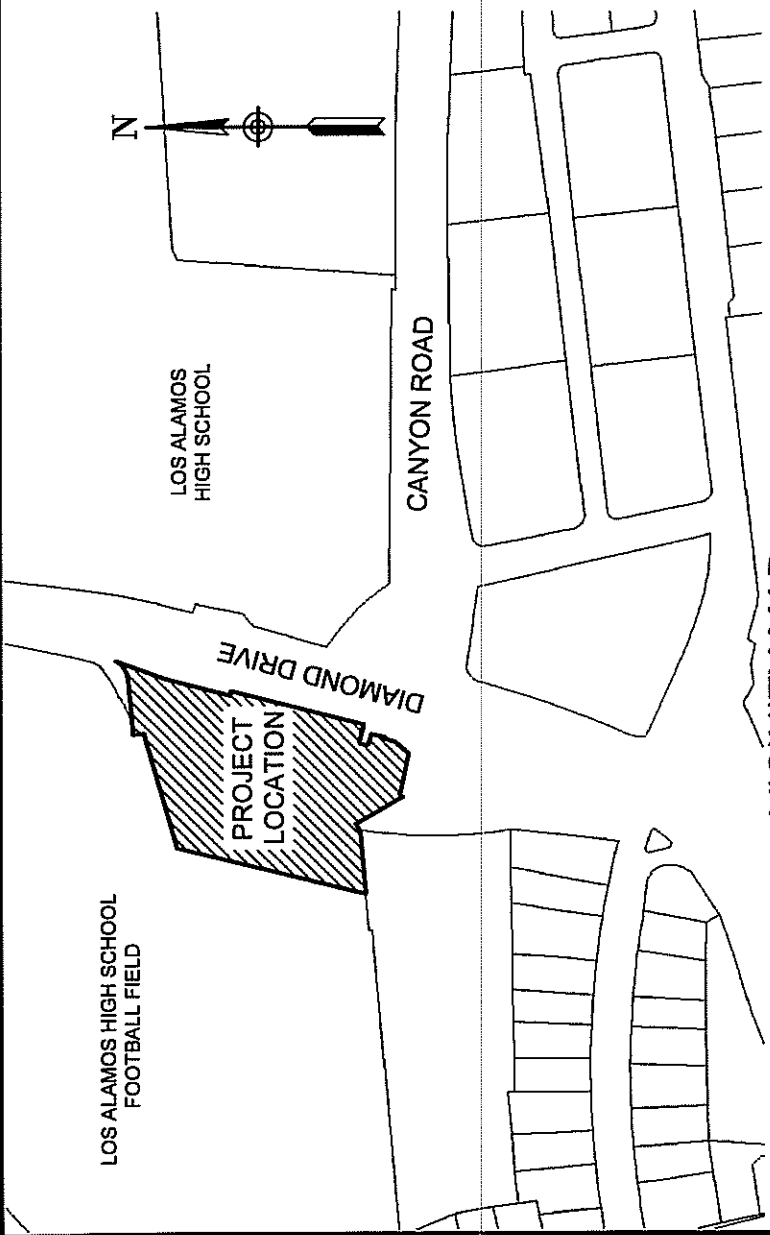
**Sara C. Scott, Council Chair**

**ATTEST:**

---

**Naomi D. Maestas  
Los Alamos County Clerk**

BOUNDARY SURVEY OF TRACT F-1  
A PREVIOUSLY LOS ALAMOS COUNTY  
RIGHT-OF-WAY WITHIN  
WESTERN AREA #1  
LOS ALAMOS COUNTY,  
NEW MEXICO



VICINITY MAP  
NOT TO SCALE



GENERAL NOTES

1. FIELD SURVEY WAS COMPLETED ON AUGUST 9, 2019.
2. THIS PROPERTY LIES WITHIN SECTIONS 8, 9, 15 AND 16, TOWNSHIP 19 NORTH, RANGE 6 EAST N.M.P.M.
3. BASIS OF BEARING: N.M.D.O.T. GPS CONTROL SURVEY MAP ENTITLED "LOS ALAMOS CONTROL" PREPARED BY WILLIAM A. BOWERS, N.M.P.S. 11765 ON OCTOBER 9, 2008 AND FILED FOR RECORD IN THE SURVEY & MAPPING SPECIALTY SECTION OF THE NEW MEXICO DEPARTMENT OF TRANSPORTATION GENERAL OFFICE BUILDING LOCATED AT 1120 CERRILLOS RD., SANTA FE, NEW MEXICO. PHONE # (505) 827-5100.
4. ALL DISTANCES SHOWN HEREON ARE GROUND DISTANCES (U.S. SURVEY FOOT).
5. PROJECT AVERAGE COMBINED GRID SCALE FACTOR = 1.000446063

REFERENCE DOCUMENTS

1. LOT LINE ADJUSTMENT BETWEEN TRACT F, WESTERN AREA NO. 1 & DIAMOND DRIVE RIGHT-OF-WAY, WESTERN AREA NO. 1, LOS ALAMOS NEW MEXICO. RECORDED IN PLAT BOOK 162, PAGE 911 ON APRIL 18, 2013 AS INSTRUMENT NO. 217026 IN THE RECORDS OF LOS ALAMOS COUNTY, NEW MEXICO.
2. WESTERN AREA NO. 1, U.S. ATOMIC ENERGY COMMISSION, LOS ALAMOS AREA OFFICE. PREPARED BY LIMBAUGH ENGINEERING AND AERIAL SURVEYS, INC., RECORDED IN PLAT BOOK 1, PAGE 666 ON SEPTEMBER 20, 1965.

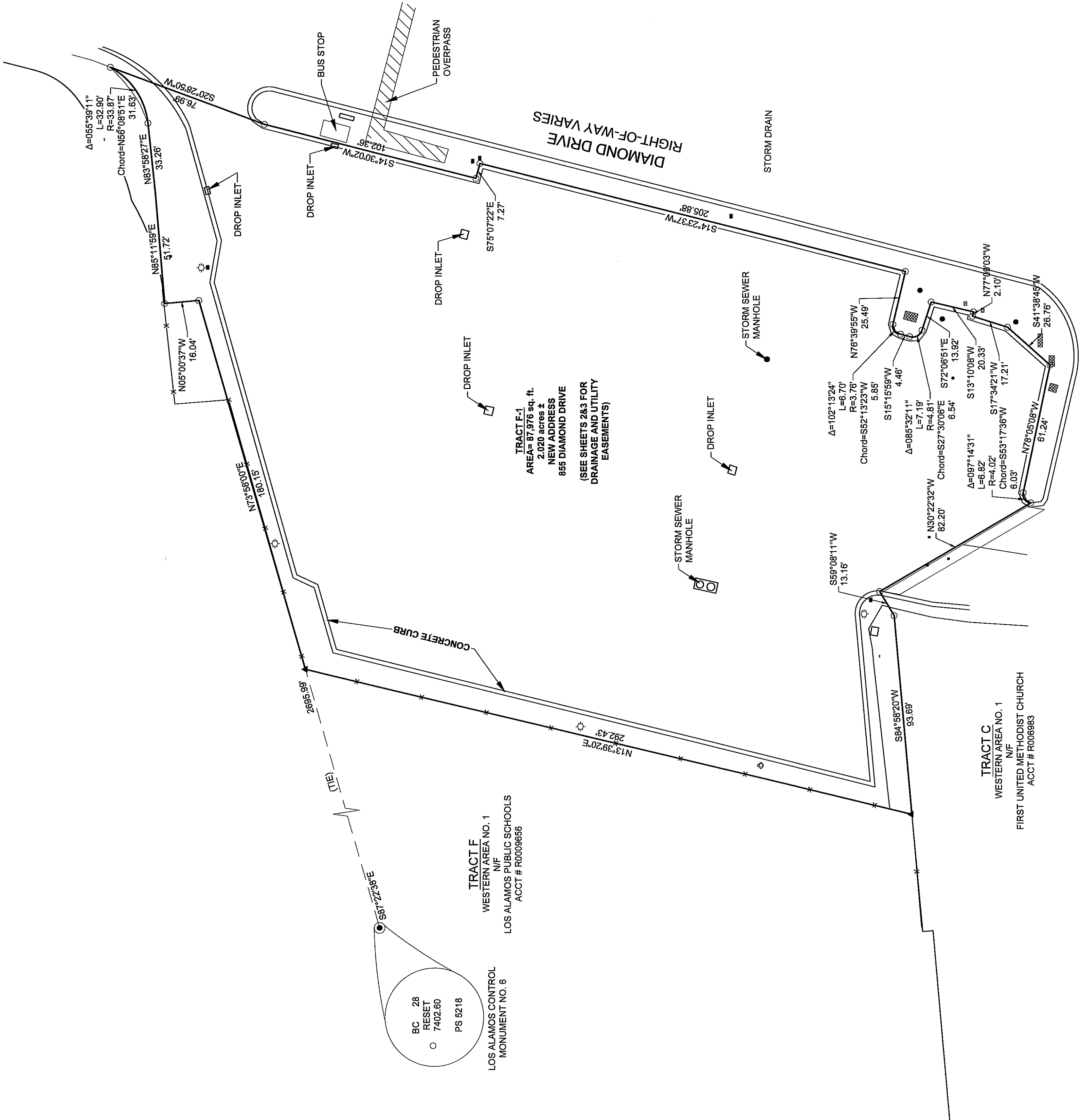
LEGEND

- ▲ FOUND "T-BAR" WICAP
- FOUND 1/2" REBAR WICAP OR PK NAIL WITH FLASHER STAMPED "LS 11993"
- REBAR WITH CAP OR PK NAIL WITH FLASHER STAMPED "LS 18375" SET
- ⊗ TELCOM. MANHOLE
- ⊙ ELECTRIC MANHOLE
- ⊕ SANITARY SEWER MANHOLE
- ⊖ WATER VALVE
- ⊙ STREET LIGHT POLE
- ⊕ FIRE HYDRANT
- ⊙ ELECTRICAL EQUIPMENT BOXES

INCORPORATED  
COUNTY OF LOS ALAMOS,  
PUBLIC WORKS DEPT.



LOS ALAMOS  
ENGINEERING DIVISION  
1000 CENTRAL AVE., SUITE 160  
LOS ALAMOS, NEW MEXICO 87544  
(505) 862-8150 FAX: (505) 862-8109



**DEDICATION**  
THE AREA DESIGNATED HEREON AS TRACT F-1 FORMERLY PUBLIC RIGHT-OF-WAY AS WELL AS THOSE UTILITY AND DRAINAGE EASEMENTS DELINEATED HEREON, IS HEREBY GRANTED TO THE INCORPORATED COUNTY OF LOS ALAMOS AND ITS SUCCESSORS AND ASSIGNS FOR THE PURPOSE OF DRAINAGE & UTILITY EASEMENTS OVER, ACROSS, IN AND UPON THE LAND SHOWN AND VEHICULAR INGRESS/EGRESS TO DIAMOND DRIVE.

**COUNTY OF LOS ALAMOS APPROVALS**  
THIS PLAT IS HEREBY APPROVED THIS 14 DAY OF August, 2019 BY THE LOS ALAMOS COUNTY COMMUNITY DEVELOPMENT DIRECTOR IN ACCORDANCE WITH THE SUMMARY PROCEDURE AUTHORIZED BY THE PLANNING AUTHORITY OF LOS ALAMOS COUNTY, NEW MEXICO.

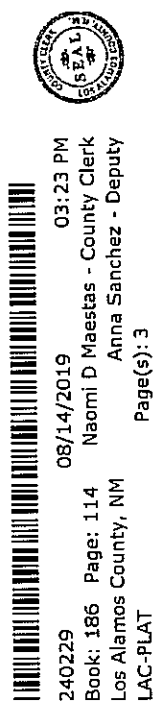
LOS ALAMOS COUNTY COMMUNITY DEVELOPMENT DIRECTOR  
*[Signature]* DATE 8/14/19

**LEGAL DESCRIPTION**

A Tract of land within Western Area No. 1, Los Alamos, Los Alamos County, New Mexico, more particularly described as:  
Beginning at the point for control monument No. LAC-6 (Trinity) within the Los Alamos County Control Map,  
Thence S87°22'39"E a distance of 2895.59 ft to the point and place of beginning.

Thence bearing N 72°58'09"E a distance of 180.15 ft;  
Thence bearing N 05°00'37" W a distance of 16.04 ft;  
Thence bearing N 85°11'59" E a distance of 51.72 ft;  
Thence bearing N 85°58'27" E a distance of 33.26 ft;  
Thence along a curve to the right, having a radius of 33.97 ft, a delta angle of 55° 39' 11", and whose long chord bears N 56°08'51" E a distance of 31.63 ft,  
Thence bearing S 20°28'59" W a distance of 76.99 ft;  
Thence bearing S 14°30'02" W a distance of 102.36 ft;  
Thence bearing S 75°07'22" E a distance of 7.27 ft;  
Thence bearing S 14°23'37" W a distance of 205.88 ft;  
Thence bearing N 76°39'55" W a distance of 25.49 ft;  
Thence along a curve to the left, having a radius of 3.76 ft, a delta angle of 102° 13' 24", and whose long chord bears S 72°51' E a distance of 5.82 ft. ;  
Thence along a curve to the left, having a radius of 4.46 ft, a delta angle of 85° 32' 11", and whose long chord bears S 27°30'6" E a distance of 6.54 ft;  
Thence bearing S 72°51" E a distance of 13.92 ft;  
Thence bearing S 13°10'9" W a distance of 2.10 ft;  
Thence bearing S 17°34'21" W a distance of 17.21 ft;  
Thence bearing S 41°35'45" W a distance of 28.76 ft;  
Thence along a curve to the left, having a radius of 6.03 ft, a delta angle of 6.03 ft, and whose long chord bears S 55°17'39" W a distance of 82.20 ft;  
Thence bearing N 30°22'32" W a distance of 6.03 ft;  
Thence bearing S 59°51'11" W a distance of 13.16 ft;  
Thence bearing S 84°58'29" W a distance of 93.69 ft;  
Thence bearing N 13°39'20" E a distance of 282.43;  
to the point and place of beginning.

Tract contains 2.020 acres OR 87,976 square feet ±.



ENV 178 A-6

**SURVEYORS CERTIFICATE**

I, JASON A. ROMERO, HEREBY CERTIFY THAT I AM A REGISTERED PROFESSIONAL SURVEYOR UNDER THE LAWS OF THE STATE OF NEW MEXICO AND THAT THIS PLAT AND THE NOTES HEREON WERE PREPARED FROM DOCUMENTS LISTED UNDER THE HEADING "REFERENCE DOCUMENTS" AND FROM FIELD NOTES OF AN ACTUAL SURVEY MADE UNDER MY SUPERVISION IN JULY 2019, AND MEETS THE MINIMUM REQUIREMENTS OF THE STANDARDS OF LAND SURVEYS IN NEW MEXICO AS ADOPTED BY THE NEW MEXICO STATE BOARD OF LAND SURVEYS FOR PROFESSIONAL ENGINEERS AND PROFESSIONAL SURVEYORS AND IS TRUE AND CORRECT TO THE BEST OF MY KNOWLEDGE AND BELIEF.



*[Signature]* DATE 8/14/19

JASON A. ROMERO, N.M.P.S. NO. 18375  
County of Los Alamos, Public Works Dept., Engineering, Div.  
1000 Central Ave., Suite 160  
Los Alamos, New Mexico 87544  
Ph. (505) 862-8150



