

Trinity Drive/NM 502 Safety & ADA Improvements Oppenheimer Drive to 15th Street

Transportation Board

September 5, 2019

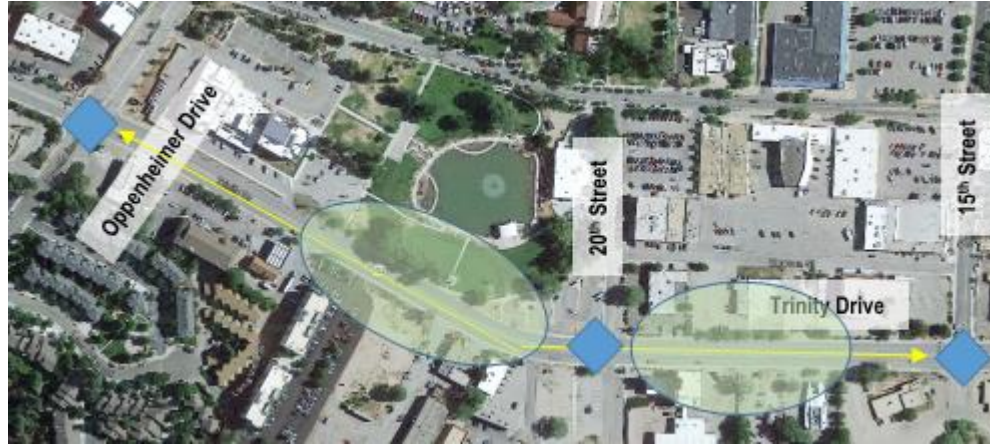
Incorporated County of Los Alamos
Public Works Department

Jon Bulthuis – Acting Public Works Director
Eric Martinez, P.E., CFM – County Engineer

Background Information

- Trinity Drive
 - Gateway to Los Alamos
 - 1.65 Mile Segment of NM 502
 - Diamond Drive to Central Ave.
 - Surrounding Land Uses
 - Residential/Office/Retail
 - Four Lane, Urban Principal Arterial
 - Center Lane Features Vary
 - None >>> TWLTL>>> Medians w/Turn Bays
 - AADT 12,000-15,000 vpd

Project Location & Background

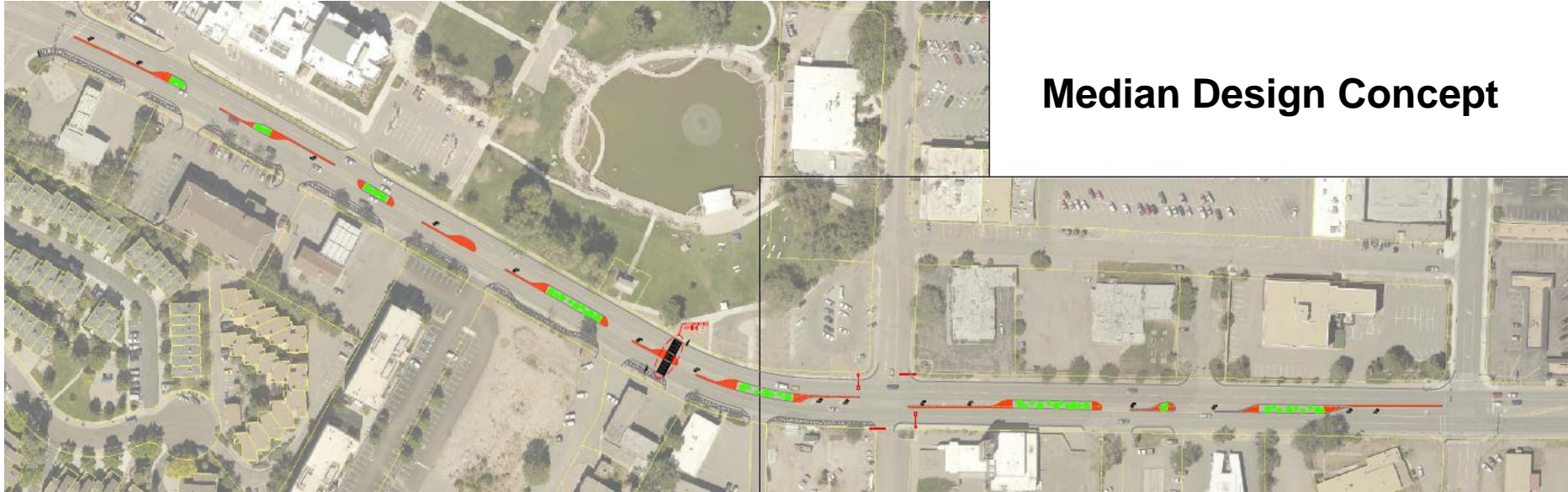


- Los Alamos Downtown District
- 2016 Road Safety Audit
 - Termini: Oppenheimer Drive to 15th Street (MP 0.7 to 1.12)
 - Length: 0.42 Mile Segment of NM 502
- 2018 Traffic Signal Warrant Study at 20th Street
 - 35 MPH (Posted); 43 MPH (85th Percentile)

Project Improvements

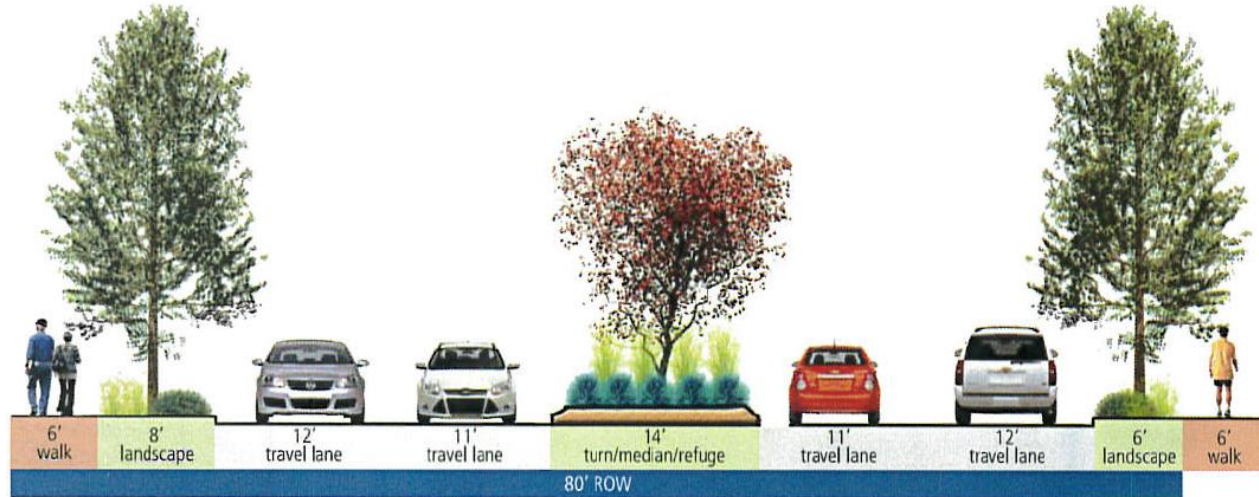
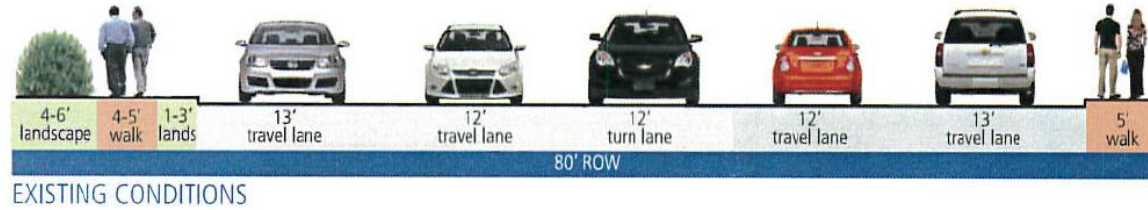
- Access Management, ADA, Pedestrian, Bicycle & Motorist Safety Improvements
 - Landscaped Median Installation
 - Traffic Channelization, Delineation and Speed Reduction
 - Sidewalk, ADA Ramps and Landscape Buffers
 - Pedestrian Crossing Improvements
 - Traffic Signalization
 - New Signal at 20th St. (Also Adds Ped Xing Opportunities)
 - Replace Dated Equipment at Oppenheimer Dr.
 - Roadway & Pedestrian Lighting Improvements (LED)
 - Bicycle Lanes (also provide pedestrian buffers)
 - Transit Bus Pullouts

Project Improvements



Median Design Concept

Project Improvements



Project Estimated Costs

- Design Component: \$ 480,000
- Utilities and Certification Component: \$ 160,000
- Right of Way Acquisition Component: \$ 200,000
- Project Construction Cost Component: \$ 3,250,000
- Project Construction Management Component: \$160,000
- **Total Cost: \$4,250,000**

Current & Future Development

- Housing
- Economic Development
- National Parks/Monuments (MPNHP, Bandelier, Valles Caldera)
- LANL Employment
- Transportation
 - NM 502 Reconstruction/Roundabout (Ongoing)
 - NM 502 Pavement Preservation (Fall 2019, NMDOT Lead)
 - Pedestrian & ADA Improvements (County Lead—Local Government Transportation Fund)
 - Multiuse Trails
 - Canyon Rim Trail Extension (Design Ongoing)
 - Canyon Rim Trail Underpass (TAP—Design Near Completion)
 - Urban Trail (TAP/CMAQ)

Current & Future Development

TRINITY DRIVE CORRIDOR



LEGEND

- NEW RESIDENTIAL AREA
- NEW COMMERCIAL AREA
- POINTS OF INTEREST
- TRANSIT STOP

KEY:

1. MARKET RATE APARTMENT COMPLEX (149 UNITS)
2. AFFORDABLE HOUSING APARTMENT COMPLEX (70 UNITS)
3. SENIOR HOUSING (64 UNITS)
4. PROPOSED HOTEL AND CONFERENCE CENTER
5. NATURAL GROCERS STORE
6. WENDY'S RESTAURANT
7. COMMERCIAL AREA (TBD)
8. MEDICAL CENTER
9. MESA PUBLIC LIBRARY
10. FULLER LODGE/HISTORICAL MUSEUM
11. ASHLEY POND PARK
12. TEEN/YOUTH ACTIVITY & VISITOR CENTERS/MANHATTAN PROJECT N.H.P. OFFICE
13. ADULT DAYCARE FACILITY
14. L.A.P.S. ADMINISTRATION OFFICE
15. SMITHS MARKET PLACE
16. AQUATIC CENTER
17. NATURE CENTER
18. MIXED USE RESIDENTIAL/OFFICE COMPLEX

Supporting Documents & Plans

- Northern Pueblos RTPO
 - RTIPR Priority #1 Project – Safety Category
- FY 2020 Council Strategic Leadership Plan
- 2017 Bicycle Transportation Plan
- 2016 Los Alamos County Comprehensive Plan
- 2012 Downtown Sidewalk & Streetscape Assessment
- 2010 County Resolution 10-32—Design Policy for Complete Streets
- 1998 Pedestrian Transportation Plan
- NMDOT ADA Transition Plan

Questions?