

# In the Works....

## Public Works Monthly Report – August 2019




### Administration Division

#### Transportation Board Recruiting One New Member



The Transportation Board meets the first Thursday of the month at 5:30 p.m. Meetings are held at 1000 Central Avenue, Room #110.

#### August 1, 2019 Transportation Board Meeting Highlights

-  Jon Bulthuis, Interim Public Works Director, discussed the County's New Web Cam Service (MyDrive) for live streaming video showing major roadways and intersections throughout Los Alamos and White Rock. Residents can monitor traffic flows, check on traffic back-ups after reported road accidents, slow-downs during road construction, or weather conditions during the snowy winter months.
-  Annette Granillo, Transit Manager explained to Transportation Board Members that the County is seeking a qualified and experienced Consultant to provide a Comprehensive Transit Study and an Updated Five-Year Service Plan for the County's public transit system, Atomic City Transit ("ACT"). The study and updated plan will include all the items discussed in the Scope of Work and Deliverables. The final plan will prioritize recommended changes to ACT's transit service, including recommended modifications to existing service, as well as any proposed new service, specifically optimal weekend services. The plan will also include recommended modifications or changes to current practices to provide more reliable and efficient operations and organizational approaches that contribute to overall effectiveness of transit management.
-  Juan Real, Traffic & Streets Manager discussed the current signal controllers have been in operation since 2005 in which spare parts and repair support ended in 2017. Four different Advanced Traffic Control controllers were obtained for testing and evaluation from their respective manufacturers. The selected controllers are Econolite Cobalt ATC.





## Airport Division

### Aircraft Tie Downs

Traffic & Streets crews helped to install three new aircraft tie-down parking spots. Each parking spot consists of three steel anchors set deep into the ground that are used to physically constrain without damaging the aircraft in high wind situations. These new tie-down locations allow the airport to meet aviation demand, increase airfield activity and improve the economic impact of the airport. The Los Alamos Airport is currently home to 60 based aircraft. In addition to functioning as a critical transportation hub, a recent NMDOT study determined the airport is contributing 33 fulltime jobs and \$8 million in total economic impact to the local economy.



## Custodial Division

-  The Custodial Division supported 247 events during the month of August.
-  The carpets were cleaned at Mesa Public Library and the Nature Center.
-  Floor work will begin at Pajarito Cliffs Site and the Police Department in September.
-  Exterior window cleaning will begin in September at various County buildings.

## **Engineering & Project Management Division**

### **Canyon Rim Trail Phase 3**

The County has been working with the consultant to acquire parcels with private owners. Formal offers are being drafted and coordinated by the County Attorney's office.

### **Diamond Drive Pavement Rehabilitation Project**



Diamond Drive is undergoing a mill and inlay project from the Omega Bridge through the Roundabout at San Ildefonso. Work began on July 22<sup>nd</sup>. Work between Omega Bridge and Sandia/Orange St. intersection was complete prior to school beginning on August 15th, per the contract. Project completion is scheduled for late September of this year.

### **NM 502 Reconstruction, Knecht St. to Tewa Loop**

Staff continues to coordinate with NMDOT on this state lead project. The contractor, Star Paving, began work on March 18, 2019. Agency coordination is ongoing for projects occurring on or near DP Road for public outreach. Trinity is currently detoured through Central Avenue at Knecht, and traffic east of Central was shifted to the north for utility and storm drain installation on the south side of Trinity Drive between Tewa Loop and DP Road. This detour is expected to remain in place through most of the summer months.

### **Canyon Rim Trail Underpass**

The project was awarded federal FY2018 funding under the Transportation Alternatives Program (TAP) for project study and design in the amount of \$320,000 and FY2020 TAP funding for project construction in the amount of \$2,020,000 for a total award of \$2,340,000.

A trail plat of easement, as requested by NMDOT, was reviewed by NMDOT and comments received for revisions. A final submittal was sent to NMDOT. Final plans are anticipated following the approval of the plat by NMDOT and receipt of NMDOT certifications. Construction is anticipated to begin in March 2020.

### **Tracts A-13/A-12 LASO Offsite Improvements Project**

Santa Fe Engineering, the County's design consultant, presented the design alternatives to the Transportation Board on January 3rd. The board requested a road diet be considered on

Trinity Drive between Oppenheimer and Diamond Drive. The road diet scope was added and analyzed by SFE. The findings and a preferred alignment, based on the model's analysis, were presented and a recommendation to move forward with the Road Diet alternative from Diamond Drive to Oppenheimer Drive was made by the T-Board at the May 2, 2019 meeting. Following the meeting the traffic analysis was completed and was submitted to NMDOT for their review and approval, as Trinity Dr. is a State facility. The recommended alternative was presented to County Council on June 25th and comments were received to refer to NMDOT for their review. If NMDOT concurs with the recommended alternative, final design will begin and is anticipated to be complete before the end of 2019.

#### **SR4 and Truck Route**

NM 4/East Jemez Rd. (Truck Route) Intersection: Staff continues to work with DOE, NMDOT Bandelier, and Army Corps of Engineers to program, design and construct intersection upgrades to improve capacity and safety. Bohannon Huston completed a traffic study documenting a preliminary estimate for the preferred alignment estimated at \$4.3Million including NMGRt.

USACE and DOE are currently under design with Bohannon Huston and final designs are anticipated late August of 2019. Bi-weekly project team meetings are being held with all stakeholders to keep this project on schedule. A 90% design review was held on July 17 with an updated estimate of \$4.3Million, not including USACE overhead, and a final plan set was delivered to USACE in Mid-August.

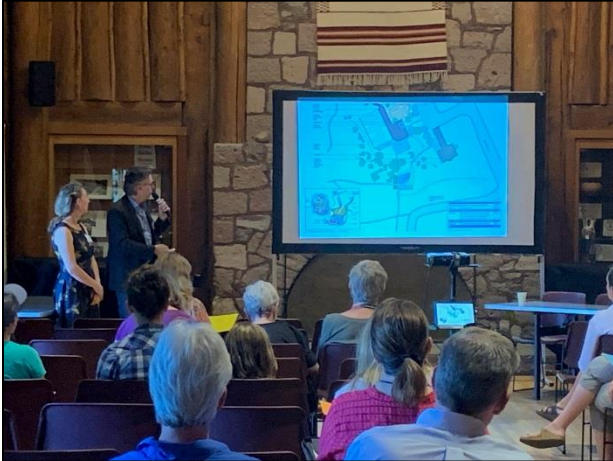
#### **Kiddie Pool Project**



FBT Architects Drew Fisher and Ted Grumblatt presented the schematic design on August 28<sup>th</sup> at Fuller Lodge. Floor plans, exterior and interior views were shown at a public meeting. Next step, the architects will set the footprint of the building and work on a site plan for submittal to the Planning and Zoning Board.



### **Piñon Park Splash Pad**



Design professionals, Kenneth Francis and Abby Feldman, of Surroundings presented two distinct themes, schematic splash pad plans, proposed site materials and amenities, and water system options at a public meeting on August 28<sup>th</sup> at Fuller Lodge.

### **Golf Course Irrigation Project**



On August 28<sup>th</sup> MRWM Landscape Architects presented the new sprinkler head lay-out, aerial survey of the course and proposed expansion or contraction of the turf areas based upon the consultant's analysis of current watering schedule and patterns.

You can view the presentations that were presented by the consultants by visiting the Public Works Projects page at

[https://www.losalamosnm.us/government/departments/public\\_works/public\\_works\\_projects](https://www.losalamosnm.us/government/departments/public_works/public_works_projects)

### **Public Health Office Remodel**

This work was completed on schedule with Las Clinicas del Norte open for business on August 1<sup>st</sup>. Contractors quotes were high priced and would have required going out to bid, completely missing the schedule move in date of August 1<sup>st</sup>. Kudos to Facilities for taking accomplishing the project, performing it in a very short time of two weeks, and saving the County substantial money.

### **White Rock Senior Meals Center Kitchen Equipment Upgrade**

The remodel work was completed in March. A steam table is being purchased directly from a vendor to have this part of the State Grant scope fit within the budget. The steam table is ordered and expected to arrive the end of August.

### **Golf Course Clubhouse Patio Enclosure**

Architects Studio will provide design services to enclose the patio area of the restaurant at the clubhouse. Projected completion of construction work to occur before the winter season sets in.

### **Aquatic & Airport Re-roof – FBT Architects**

A bid opening was held on August 29, and an anticipated Council award on September 3.

Aquatic Center: Work includes re-roofing the flat roof portion of the center's roof, correcting some structural issues with a portion of the roof structure away from public areas which have been damaged by excessive humidity, install an exhaust fan in the electrical room to exhaust future humidity build-ups and create some air flow, and add roof-mounted electric heat mats for the northern side that does not "see" sun in the winter. These are the same type of mats that were installed at FS3.

Airport Roof: Work includes re-roofing, adding some posts that the Civil Air patrol can use to attach antennae cabling to for their radio system to increase its range, and new fascia and downspouts. Work will begin in October.

### **Ice Rink Improvements – NCA Architects (Design)**

A brief kick-off meeting was held Aug 12 at the rink with the consultants and Rink managers. Measurements were taken and design has commenced and will continue thru the end of 2019. Staff and the consultants will make a presentation to the Parks and Recreation Board will occur September 25 and October 23 and Planning and Zoning (since the footprint is changing) November 11.

Bids will advertise after the holidays, with construction running from about March 1 thru October 2020, and final completion slated for the end of the year (punch list, close-out documentation).

### **On Call Construction Services**

An RFP is being developed to provide on-call facility work as needed for smaller projects that are small in scale to go out to bid individually or that need to be fast-tracked. Remodels, smaller mechanical, electrical and plumbing jobs would fall into this category, generally less than \$200,000 each, many being \$50,000 or less.

### **Fire Station 3 Alternate Dispatch Area**

Plans to provide a secondary dispatch area at Fire Station 3 began two years ago to potentially eliminate the need for an alternate dispatch location to reside at the Santa Fe Dispatch area. Planning and Design work to complete the infrastructure is needed before 911 lines are installed. This work is not yet scheduled.

### Fire Station 4 Overhead Door Replacement

A new type of high-speed door is being installed on the Medic Bay. If this door operates well, more of this type of door may be placed elsewhere.

### Fire Station 6 Restroom Remodels – Riskin and Associates (Design) – Allied 360 (Construction)

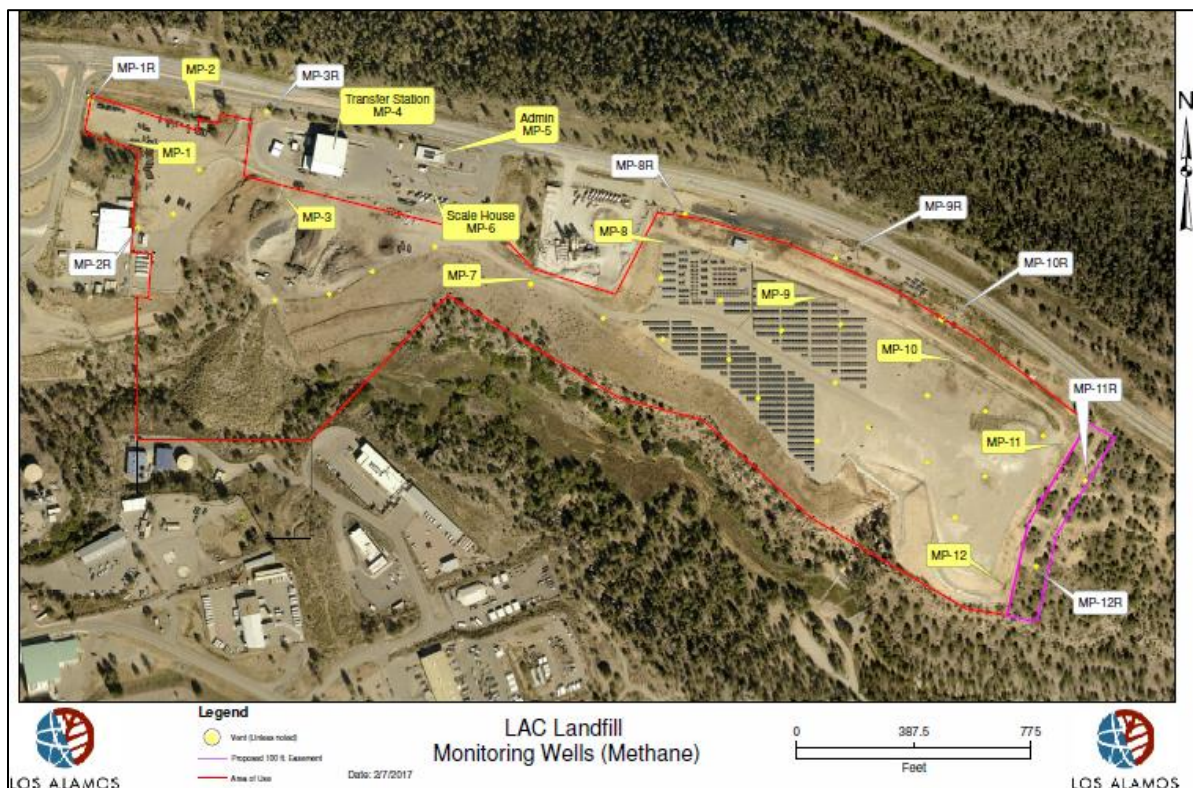
The restrooms at Fire Station 6 (Airport) will be refurbished as it has been a little over 10 years since they were last re-done and are looking worn.

Project has been awarded and should start around September 3. Work will continue until early December with a Final Completion at the end of January 2020.

## Environmental Services Division

### Los Alamos County Landfill Gas (LFG) Update

With the installation of the Landfill Gas Control and Collection system, the methane concentrations have decreased and are in compliance with NMED Solid Waste Rules. Environmental Services has received approval from New Mexico Environment Department (NMED) to reduce monitoring from weekly to quarterly as prescribed by NMAC Solid Waste Rules.





## NMED Solid Waste Bureau Conducts Annual Inspection



Peter Garcia, New Mexico Environment Department Enforcement Officer, inspected the Eco Station and closed landfill. NMED inspects the Eco Station yearly to ensure compliance with all solid waste rules and inspects everything from financial assurance records, brush pile sizes, signage, employee training and litter control on the grounds.

## Recycle Outreach to Rotary Club

Environmental Services staff presented at the Rotary Club meeting. Angelica Gurule gave a



PowerPoint presentation about what happens to the recycling in Los Alamos County as well as the services we provide. Sara Thurgood played the recycle game with the club members and answered questions

they had about what to do with certain items and the rules about recycling.

## Recycle Outreach to Los Alamos Public Schools

Angelica Gurule and Sara Thurgood assisted LAPS teacher Susan Hettinga in her Summer Institute recycle teacher professional development class. They demonstrated how to recycle right in their classrooms and around the schools, provided flyers and posters for the teacher to take back to their classrooms, and discussed what Environmental Services can help with.

## Recycle Information at New Student Orientation with LAPS

Joshua Levings gave a presentation to fifteen families who are new to the school district. He talked about what recycling services are available to residents in Los Alamos County and the Green Cafeteria Initiative that will help reduce waste in the schools.

## Creation of Greens Schools Task Force

Teachers and staff from LAPS and staff from Environmental Services as well members of the community had a meeting with Superintendent Kurt Steinhaus and created a working group to continue the efforts of making the schools more sustainable including eliminating single-use



items in the school lunch program. The meeting produced the creation of The Green Schools Task Force which had their first meeting on August 21<sup>st</sup>.

Zero Waste team member Jody Benson joined Angelica Gurule and Sara Thurgood at the Welcome Back to School Breakfast for teachers. They handed out small deskside recycle totes with a flyer of services and the recycle magnets for the teachers to have in their classrooms.



### **How to Recycle Right Presentation at White Rock Senior Center**

Angelica Gurule and Sara Thurgood present to the Senior Center in White Rock about what you can and cannot recycle. Angelica answered questions as to what is going on with the recyclable materials sent Friedman Processing facility. Sara played the recycle game and helped answer questions.



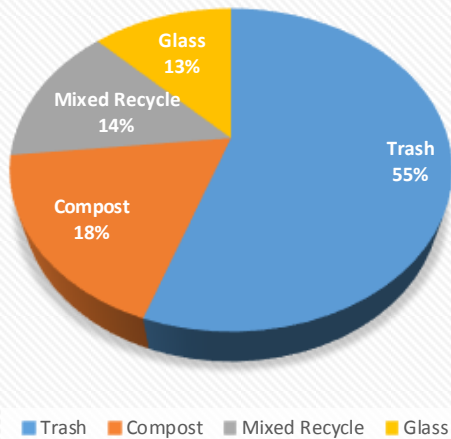
## Secret City Summer Concert Series Diversion Report

On average, curbside pickup in Los Alamos only diverts 25% of waste. At the summer concerts with the help of volunteers and workers we are able to, on average, divert 45% of waste.

	Date	Trash	Compost	Mixed Recycle	Glass	Total Materials	Total Divertible Materials	% Diverted	Attendees
1	5/24/2019	200	80	60	60	400	200	50%	1500
2	5/31/2019	440	180	120	140	880	440	50%	4000
3	6/7/2019	340	140	80	100	660	320	48%	1800
4	6/14/2019	240	140	100	60	540	300	56%	1350
5	6/21/2019	380	120	80	60	640	260	41%	1500
6	6/28/2019	440	120	80	100	740	300	41%	2100
7	7/5/2019	500	160	80	60	800	300	38%	2100
8	7/12/2019	900	360	340	260	1860	960	52%	8000
9	7/19/2019	500	60	80	60	700	200	29%	1000
10	7/26/2019	240	20	40	20	320	80	25%	200
11	8/2/2019	260	60	60	80	460	200	43%	2500
12	8/9/2019	120	40	60	20	240	120	50%	1400
13	8/16/2019	600	60	60	60	780	180	23%	
14	8/23/2019								
15	8/30/2019								

Total	Lbs
Trash	4560
Compost	1480
Mixed Recycle	1180
Glass	1020

**Zero Waste Stations Materials Collected  
at Summer Concert Series**



## Residential Sustainability Report



### Residential Sustainability Report

Service Period: July 2019

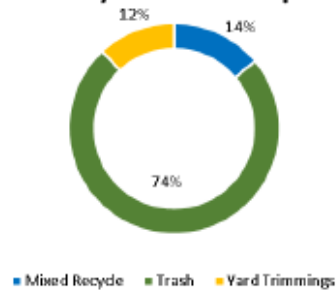
July Diversion Rate: 26%



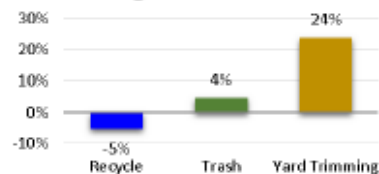
LOS ALAMOS

The *diversion rate* is the percent of recyclable and compostable material diverted from the landfill.

#### Monthly Collection Report

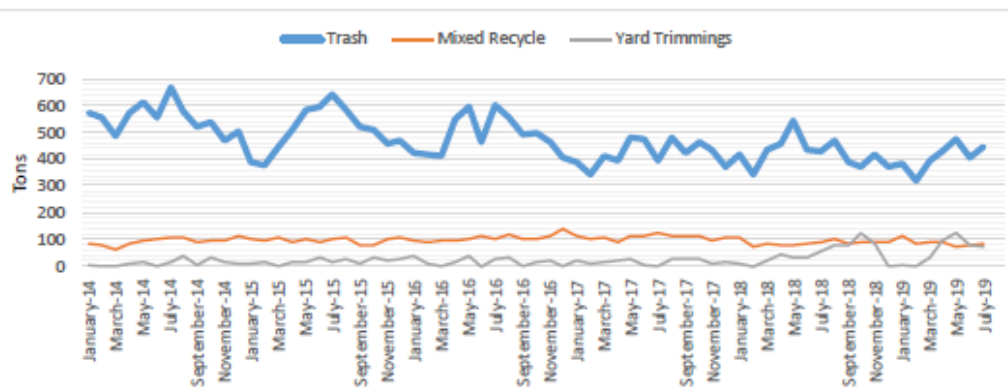


#### % Change Previous Year

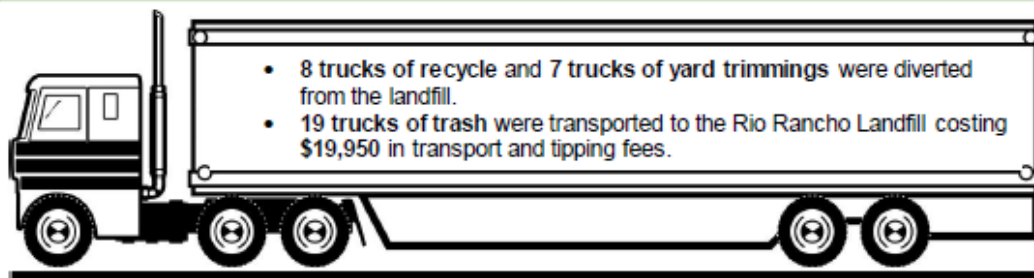


	Jul-18	Jul-19
Yard Trimmings	58.16	71.96
Recycle	89.14	84.39
Trash	429.16	448.09

In July by recycling and composting Los Alamos County reduced GHG emissions by ~430 tons



In 2019 by recycling and composting Los Alamos County reduced GHG emissions by ~2922 tons



For more information contact Environmental Services Division at 505.662.8163 or email [solidwaste@lacnm.us](mailto:solidwaste@lacnm.us)



### COMMUNITY SPOTLIGHT

By Colin Staub

LOS ALAMOS, N.M.

## Range of factors drive diversion in corner of New Mexico



Los Alamos is known to many as the site of a major research center that has made some pivotal discoveries, including development of the atomic bomb. In some ways, its research facility also factors into the community's diversion efforts.

The rural community in northern New Mexico has about 18,000 residents and is home to the Los Alamos National Laboratory, one of the U.S. Department of Energy's 16 major research facilities around the country.

That brings a particular type of resident to the community, and it shows in the recycling realm. Although Los Alamos is small, the population is engaged, interested in recycling right and curious about diversion data, said Angelica Gurule, environmental services manager for Los Alamos County, which comprises the unincorporated communities of Los Alamos and White Rock.

According to the county, Los Alamos residents have "among the highest levels of educational attainment of any community anywhere, with many residents holding a masters' degree or PhD."

In addition to its well-educated population, the incorporated county has a practical impetus for achieving strong diversion results: Los Alamos has a closed landfill, and all waste must be transported some 90 miles away for disposal.

"We do our best to keep as much trash out of the landfill as possible," Gurule explained.

### SPECIFICS ON THE STREAM

The National Laboratory also contributes its own stream to the city's diversion efforts.

As a major research facility, the lab naturally generates a great deal of clean office paper. The lab separates the paper primarily for data security reasons, wanting the waste paper to remain domestic for processing. More sensitive documents are shredded rather than recycled, but the more routine papers are able to be

### AT A GLANCE

- 18,000 residents in Los Alamos County
- 28 percent diversion rate
- Recently rolled out curbside yard trimmings collection
- 17 percent contamination rate
- Zero Waste Team exploring diversion in schools and public events

recycled, and they provide a clean stream of source-separated material, amounting to 135 tons last year.

On the residential side, the community offers curbside collection of recycling, yard trimmings and trash. Sixty percent of households have a yard trimmings cart, and 85% of households receive recycling service. Those numbers are particularly impressive, given a key fact about recycling in Los Alamos.

"All of our programs are voluntary," Gurule said, "They're not mandatory at all."

The county collects material from households and manages the transfer station. Collected material is sent to regional processor to be sorted and marketed.

Los Alamos also works with the BioPappel/McKinley USA paper mill in Prewitt, N.M., shipping the community's source-separated OCC directly to the mill. In addition, the recycling program also offers OCC drop-off locations around Los Alamos.

The community conducted a waste sort in 2015 and found that yard trimmings would be a relatively easy stream to separate. The yard trimmings collection program was recently launched, and it reflects an emphasis on diverting materials as close to home as possible. The county runs its own compost site.

## LOS ALAMOS, N.M.

"We're kind of a little island up here," Gurule said. "So as much as we can maintain, handle or manage the material on-site, within the community, to me that's the most sustainable option."

### PROGRAM EVOLUTION THROUGH THE YEARS

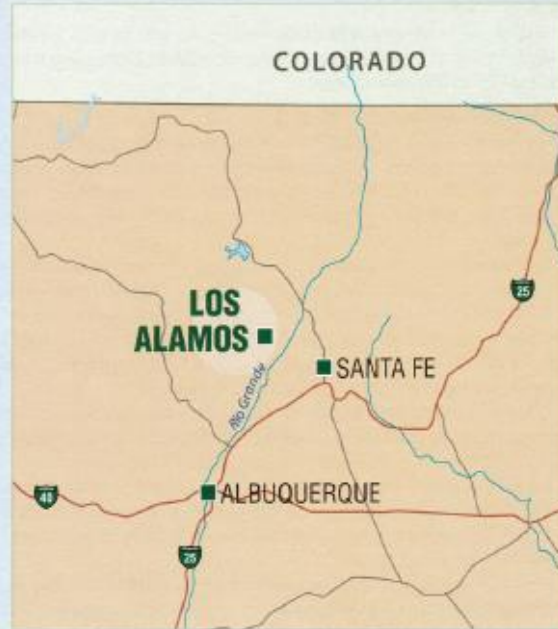
The county closed its landfill 10 years ago because the site had reached capacity. Shortly afterward, the county opened its transfer station and introduced roll-carts for garbage collection. Single-stream, cart-based recycling launched around 2012 and was expanded into its current form in 2014.

The single-stream program accepts most standard recyclables, but it does not take in glass. However, there are drop-off locations for that material, yielding about 300 tons per year.

Los Alamos achieved a 28% diversion rate in June of this year, the most recent period for which figures are available (the county is required to tally a diversion rate each month). That number includes residential recyclables and yard trimmings. The county collected nearly 80 tons of recyclables, 80 tons of yard trimmings and 406 tons of trash during June.

Friedman Recycling, which receives most of the recyclables collected in Los Alamos, conducts an annual material survey, and the county's contamination rate averages about 17%.

Like many programs, the county has seen its recycling financials shift of late – from receiving revenue for recyclables to paying to move the materials. Even so, the program has not stopped accepting any recyclables. Gurule said the recycling program doesn't want to make major shifts in accepted materials, to avoid confusing residents about what is and isn't



## Facilities Division

- ✚ Crews removed electrical boxes for new overhead door and sealed roof drains that were leaking in to the basement at Fire Station 4.
- ✚ Crews are busy painting offices at Environmental Services.
- ✚ Crews are tanning outside wood at the Betty Ehart Center.



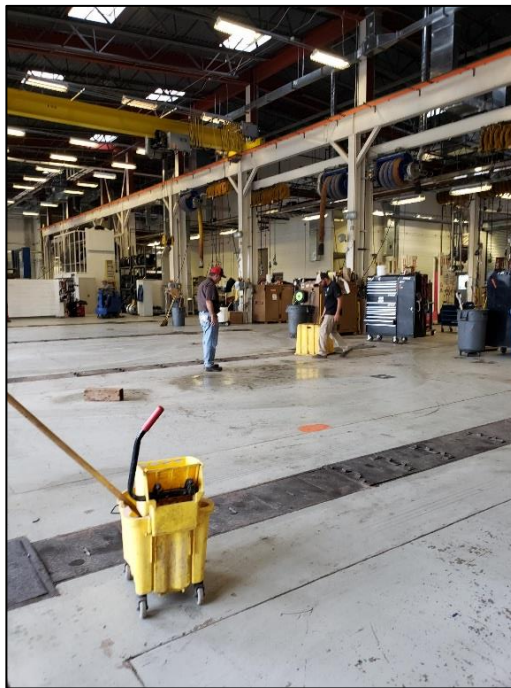
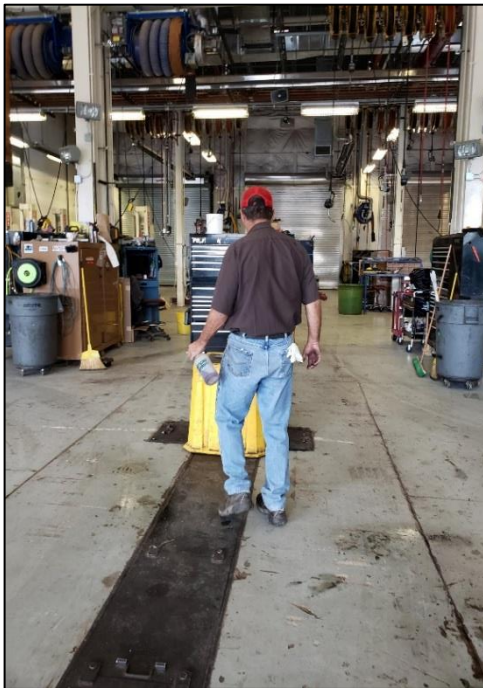


## Fleet Division



Fleet received a new Jeep Renegade that will be assigned to Utilities. This vehicle has more ground clearance and better off road capabilities to reach areas.

Fleet crews give the entire shop a good cleaning.





## Traffic and Streets Division



Traffic & Streets crews cleaned an island located at Village Place



Crews remove dead trees and cleaned the shoulder on Longview Drive in White Rock.





Crews started repairing shoulders along Ski Hill Road. This work is being done as a preservation effort to stop the existing shoulders from continuing to unravel.



Crews are working with DPU Electric to repair the asphalt on Quartz Street after new electrical distribution lines were installed.





Crews removed a light pole at Fuller Lodge that was hit by a vehicle. Due to the damage the pole had to be sent off for repair and will be put back when the repairs are completed.



Crews modified an existing drainage inlet that was causing issues for residents along Quartz Street.







Crews installed the last of the street light poles on Canyon Road. This project re-used the existing poles and they were taken down and were powder coated grey, before reinstalling them.



Crews have been busy painting new roadway stripes in White Rock.





Crews fabricated and installed four new signs to be placed on the NM 502 to assist the business community on DP Road.

## Transit Division

### Bandelier Shuttle Service



Atomic City Transit began shuttle service to Bandelier National Monument on May 16, 2019. Service has been busy shuttling customer from White Rock Visitor Center to Bandelier. Shuttle service to Bandelier is provided seven days a week with 30-minute weekday service and 20-minute weekend and holiday weekends from White Rock Visitor Center to Bandelier. Shuttle service will be provided from May 16, 2019 through October 16, 2019. Ridership for July 2019 was very busy, with a total of 26,247 trips performed for this service.

### Los Alamos County Fair – LA Public School Orientation

Atomic City Transit participated in the County Fair on August 10, 2019 and Los Alamos Public School New Family Orientation. These events provided the opportunity for parents to have trip planning assistance for express routes.





### **Portable Fire Extinguisher Class**

Atomic City Transit took some time on Wednesday, August 14, 2019 to participate in Portable Fire Extinguisher Class. All employees are required to participate and demonstrate the skills necessary to use portable fire extinguishers.



**Welcome back Jonathan Henley!**



**Welcome to ACT Lance Griego!**



### **2019 White Rock Friday Night Summer Concert Bus Service**

Atomic City Transit is once again, partnering with Los Alamos DWI Council to bring you a safe ride to your Friday Night Summer Concerts. Three routes will be service this year with maps and time schedules below. This years' summer concert line up is sure to please. The concerts and transportation are free. Forget the traffic and stress of finding a parking, hop on the bus and enjoy.

Atomic City Transit has provided shuttle service for four Friday night concerts. Below is a summary of the customer trips provided for the month of July.

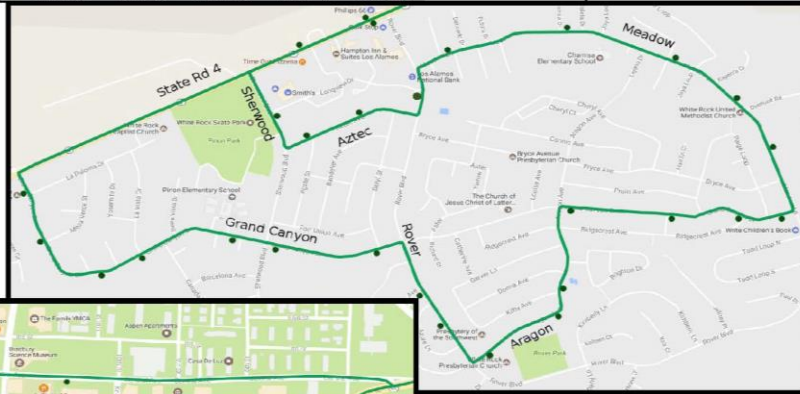
Date	Route	Adult	Student	Senior	Bike	Lift	Unlinked Passenger Trips
7/5/19	<b>White Rock</b>	<b>17</b>	<b>9</b>	<b>2</b>	-	-	<b>28</b>
7/5/19	<i>North Mesa</i>	25	23	1	-	-	49
7/5/19	<i>North Community</i>	6	2	-	-	-	8
7/5/19	<b>Los Alamos Routes</b>	<b>31</b>	<b>25</b>	<b>1</b>	-	-	<b>57</b>
7/5/19	<i>Dial-a-Ride</i>	10	-	-	-	-	10
7/5/19	<i>Dial-a-Ride Extension</i>	2	-	-	-	-	2
7/5/19	<b>Dial-a-Ride Total</b>	<b>12</b>	-	-	-	-	<b>12</b>
7/5/19	<b>Supervisor</b>	-	-	-	-	-	-
7/5/19	Fixed Route Total	48	34	3	-	-	85
7/5/19	Demand Response Total	12	-	-	-	-	12
7/5/19	<b>Concert Total</b>	<b>60</b>	<b>34</b>	<b>3</b>	-	-	<b>97</b>
7/12/19	<b>White Rock</b>	<b>54</b>	<b>3</b>	-	-	-	<b>57</b>
7/12/19	<i>North Mesa</i>	54	40	17	-	-	111
7/12/19	<i>North Community</i>	18	8	-	-	-	26
7/12/19	<b>Los Alamos Routes</b>	<b>72</b>	<b>48</b>	<b>17</b>	-	-	<b>137</b>
7/12/19	<i>Dial-a-Ride</i>	5	-	-	-	-	5
7/12/19	<i>Dial-a-Ride Extension</i>	7	-	-	-	-	7
7/12/19	<b>Dial-a-Ride Total</b>	<b>12</b>	-	-	-	-	<b>12</b>

7/12/19	<b>Supervisor</b>	-	-	-	-	-	-
7/12/19	Fixed Route Total	126	51	17	-	-	194
7/12/19	Demand Response Total	12	-	-	-	-	12
7/12/19	<b>Concert Total</b>	<b>138</b>	<b>51</b>	<b>17</b>	<b>-</b>	<b>-</b>	<b>206</b>
7/19/19	<b>White Rock</b>	<b>7</b>	<b>10</b>	<b>-</b>	<b>-</b>	<b>-</b>	<b>17</b>
7/19/19	<i>North Mesa</i>	7	5	3	-	-	15
7/19/19	<i>North Community</i>	5	7	3	-	-	15
7/19/19	<b>Los Alamos Routes</b>	<b>12</b>	<b>12</b>	<b>6</b>	<b>-</b>	<b>-</b>	<b>30</b>
7/19/19	<i>Dial-a-Ride</i>	6	-	-	-	-	6
7/19/19	<i>Dial-a-Ride Extension</i>	2	-	-	-	-	2
7/19/19	<b>Dial-a-Ride Total</b>	<b>8</b>	<b>-</b>	<b>-</b>	<b>-</b>	<b>-</b>	<b>8</b>
7/19/19	<b>Supervisor</b>	-	-	-	-	-	-
7/19/19	Fixed Route Total	19	22	6	-	-	47
7/19/19	Demand Response Total	8	-	-	-	-	8
7/19/19	<b>Concert Total</b>	<b>27</b>	<b>22</b>	<b>6</b>	<b>-</b>	<b>-</b>	<b>55</b>

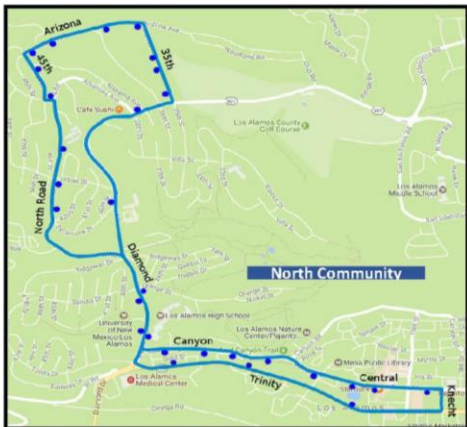


7/26/19	<b>White Rock</b>	<b>7</b>	<b>8</b>	-	-	-	<b>15</b>
7/26/19	<i>North Mesa</i>	<i>1</i>	<i>5</i>	-	-	-	<i>6</i>
7/26/19	<i>North Community</i>	<i>1</i>	<i>2</i>	-	-	-	<i>3</i>
7/26/19	<b>Los Alamos Routes</b>	<b>2</b>	<b>7</b>	-	-	-	<b>9</b>
7/26/19	<i>Dial-a-Ride</i>	<i>3</i>	<i>-</i>	-	-	-	<i>3</i>
7/26/19	<i>Dial-a-Ride Extension</i>	<i>2</i>	<i>-</i>	-	-	-	<i>2</i>
7/26/19	<b>Dial-a-Ride Total</b>	<b>5</b>	<b>-</b>	-	-	-	<b>5</b>
7/26/19	<b>Supervisor</b>	<b>-</b>	<b>-</b>	-	-	-	<b>-</b>
7/26/19	Fixed Route Total	9	15	-	-	-	24
7/26/19	Demand Response Total	5	-	-	-	-	5
7/26/19	<b>Concert Total</b>	<b>14</b>	<b>15</b>	-	-	-	<b>29</b>

White Rock								
Central & Mesa Library	Central & 15th	SR 4 & Sherwood (Visitor Center)	Grand Canyon & Sherwood	Aragón & Rover	Grand Canyon & Meadow	Sherwood & Post Office	Trinity & 20th	Central & Mesa Library
		7:03 p	7:07 p	7:09 p	7:11 p	7:16 p	7:31 p	7:32 p
7:40 p	7:41 p	7:54 p	7:58 p	8:00 p	8:02 p	8:07 p	8:22 p	8:23 p
8:25 p	8:26 p	8:39 p	8:43 p	8:45 p	8:47 p	8:52 p	9:07 p	9:08 p
9:15 p	9:16 p	9:29 p	9:33 p	9:35 p	9:37 p	9:42 p	9:57 p	9:58 p
10:05 p	10:06 p	10:19 p	10:23 p	10:25 p	10:27 p	10:32 p		



Atomic City Transit Partnering with  
Los Alamos DWI Planning Council



North Mesa											
Central & Mesa Library	Central & 15th	Trinity & 20th	Diamond & Orange	Villa & 37th	San Ildefonso & Mid School	Stoneview & Big Rock Lp	San Ildefonso & Mid School	Villa & 37th	Diamond & Sandia	Canyon & Gold St	Central & Mesa Library
						6:21 p	6:25 p	6:29 p	6:32 p	6:33 p	6:35 p
						6:51 p	6:55 p	6:59 p	7:02 p	7:03 p	7:05 p
7:00 p	7:01 p	7:03 p	7:05 p	7:08 p	7:12 p	7:16 p	7:20 p	7:24 p	7:27 p	7:28 p	7:30 p
7:30 p	7:31 p	7:33 p	7:35 p	7:38 p	7:42 p	7:46 p	7:50 p	7:54 p	7:57 p	7:58 p	8:00 p
8:00 p	8:01 p	8:03 p	8:05 p	8:08 p	8:12 p	8:16 p	8:20 p	8:24 p	8:27 p	8:28 p	8:30 p
8:30 p	8:31 p	8:33 p	8:35 p	8:38 p	8:42 p	8:46 p	8:50 p	8:54 p	8:57 p	8:58 p	9:00 p
9:00 p	9:01 p	9:03 p	9:05 p	9:08 p	9:12 p	9:16 p	9:20 p	9:24 p	9:27 p	9:28 p	9:30 p
9:30 p	9:31 p	9:33 p	9:35 p	9:38 p	9:42 p	9:46 p	9:50 p	9:54 p	9:57 p	9:58 p	10:00 p
10:05 p	10:06 p	10:08 p	10:10 p	10:13 p	10:17 p	10:21 p	10:25 p	10:29 p	10:32 p	10:33 p	10:35 p

Friday Night Concert service is an extension of our fixed routes. If you would like to arrive at Ashley Pond prior to the times listed above, please see our regular fixed route schedules at [www.AtomicCityTransit.com](http://www.AtomicCityTransit.com)

Dial-a-Ride service is available for Los Alamos and White Rock locations that are not served via these routes from 6:30 PM to 10:30 PM. Reservations are taken up to one day in advance.

North Community											
Central & Mesa Library	Central & 15th	Trinity & 20th	Diamond & Orange	Villa & 37th	San Ildefonso & North Rd	Arizona & 35th	Diamond & Sandia	Canyon & Gold St	Central & Mesa Library		
						6:35 p	6:36 p	6:38 p	6:40 p	6:44 p	6:47 p
						6:55 p	6:56 p	6:58 p	7:00 p	7:17 p	7:21 p
7:05 p	7:06 p	7:08 p	7:10 p	7:14 p	7:17 p	7:21 p	7:22 p	7:23 p	7:24 p	7:25 p	7:26 p
7:35 p	7:36 p	7:38 p	7:40 p	7:44 p	7:47 p	7:51 p	7:52 p	7:53 p	7:54 p	7:55 p	7:56 p
8:05 p	8:06 p	8:08 p	8:10 p	8:14 p	8:17 p	8:21 p	8:22 p	8:23 p	8:24 p	8:25 p	8:26 p
8:35 p	8:36 p	8:38 p	8:40 p	8:44 p	8:47 p	8:51 p	8:52 p	8:53 p	8:54 p	8:55 p	8:56 p
9:05 p	9:06 p	9:08 p	9:10 p	9:14 p	9:17 p	9:21 p	9:22 p	9:23 p	9:24 p	9:25 p	9:26 p
9:35 p	9:36 p	9:38 p	9:40 p	9:44 p	9:47 p	9:51 p	9:52 p	9:53 p	9:54 p	9:55 p	9:56 p
10:05 p	10:06 p	10:08 p	10:10 p	10:14 p	10:17 p	10:21 p	10:22 p	10:23 p	10:24 p	10:25 p	10:26 p



LOS ALAMOS  
where discoveries are made

Effective May 2019



# BANDELIER SHUTTLE

## Weekend Service:

### MAY 16 - OCTOBER 16

Regular Weekend Schedule and \*Holiday Week Schedule

Departs White Rock Visitor Center	Departs Bandelier
9:00a	9:30a
9:20a	9:50a
9:40a	10:10a
10:00a	10:30a
10:20a	10:50a
10:40a	11:10a
11:00a	11:30a
11:20a	11:50a
11:40a	12:10p
12:00p	12:30p
12:20p	12:50p
12:40p	1:10p
1:00p	1:30p
1:20p	1:50p
1:40p	2:10p
2:00p	2:30p
2:20p	2:50p
2:40p	3:10p
3:00p	3:30p
3:20p	3:50p
3:40p	4:10p
4:00p	4:30p
4:20p	4:50p
4:40p	5:00p

\*Holiday weekends are Memorial Day, 4th of July, Labor Day and Balloon Fiesta Week.  
For specific dates please call our office at (505) 661-7433.

[AtomicCityTransit.com](http://AtomicCityTransit.com)

**LOS ALAMOS**  
where discoveries are made



# BANDELIER CONNECTIONS

## from White Rock

## to Los Alamos Downtown:

### MAY 16 - OCTOBER 16

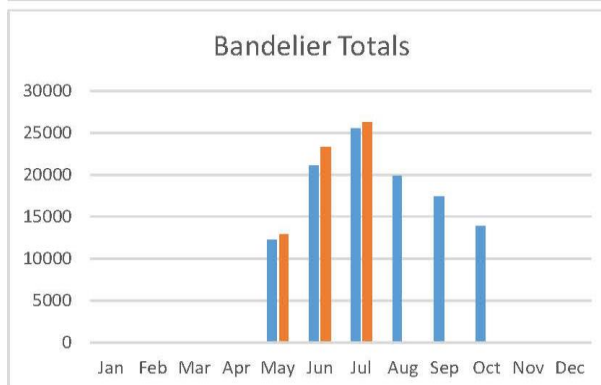
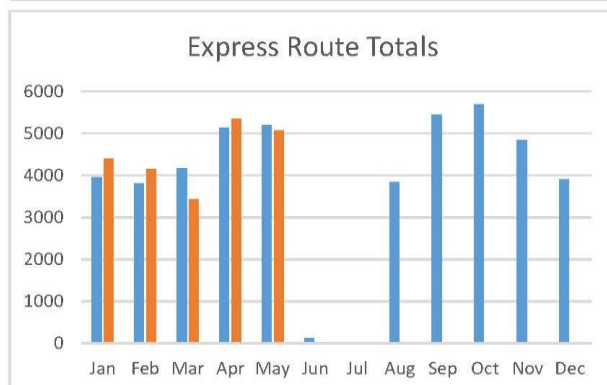
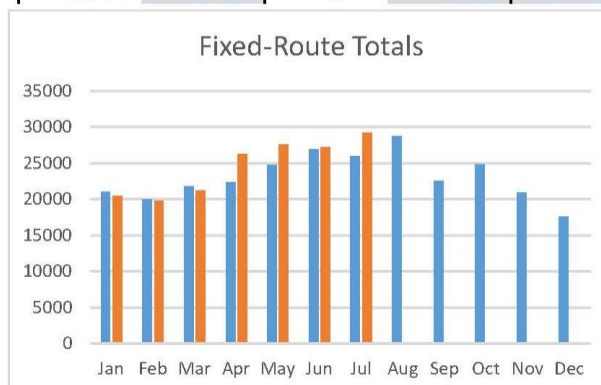
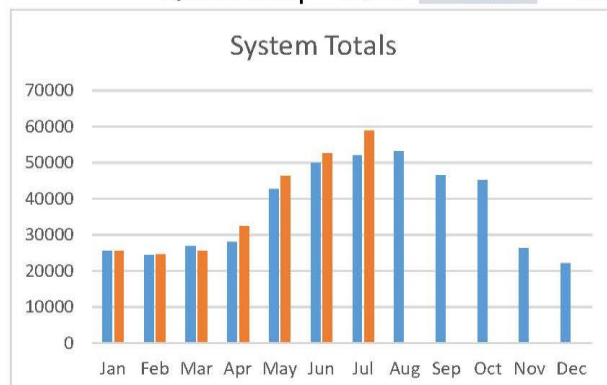
Bandelier Shuttle		Transfer Options to Atomic City Transit Routes - WEEKDAYS ONLY			
White Rock Visitor Center		Route 2T		Route 2m	2 Peak
Departs Bandelier	Arrives WR Visitor Center	2T: White Rock Library	2T: Community Garden Center	2M: Rover & SR4	2 Peak: White Rock Library
9:30a	9:56a	9:58a	10:09a		
10:00a	10:26a			10:37a	
10:30a	10:56a	10:58a	11:09a		
11:00a	11:26a			11:37a	
11:30a	11:56a	11:58a	12:09p		
12:00p	12:26p			12:37p	
12:30p	12:56p	12:58p	1:09p		
1:00p	1:26p			1:37p	
1:30p	1:56p	1:58p	2:09p		
2:00p	2:26p			2:37p	
2:30p	2:56p	2:58p	3:09p		
3:00p	3:26p			3:37p	3:36p
3:30p	3:56p	3:58p	4:09p		
4:00p	4:26p			4:37p	4:36p
4:30p	4:56p	4:58p	5:09p		
5:00p	5:26p			5:37p	5:36p



## July 2019 Ridership Report

LOS ALAMOS

Route	July Trips			Jul. Rev. Miles		Jul. Rev. Hours		YTD Trips
	2018	2019	% Chg	2018	2019	2018	2019	2019
1 Downtown	7,904	8,108	2.6%	3,785	3,965	313.6	328.5	41,724
2M White Rock - Main Hill	2,704	3,353	24.0%	7,537	7,895	284.2	297.7	20,018
2T White Rock - Truck Rt	1,956	2,414	23.4%	6,954	7,285	274.1	287.1	12,970
2P White Rock - Peak	496	816	64.5%	2,957	3,098	109.2	114.4	3,516
3 Central / Canyon	3,314	3,316	0.1%	5,337	5,591	266.7	279.4	19,294
4 North Community	3,068	3,239	5.6%	3,867	4,051	273.0	286.0	21,709
5 Barranca Mesa	1,666	1,641	-1.5%	4,249	4,451	270.6	283.4	10,204
6 North Mesa	4,860	6,333	30.3%	6,019	6,306	407.1	426.4	42,356
<b>Fixed-route subtotal</b>	<b>25,968</b>	<b>29,220</b>	<b>12.5%</b>	<b>40,705</b>	<b>42,643</b>	<b>2,198.4</b>	<b>2,303.0</b>	<b>171,791</b>
7 North Mesa Expr	-	-	0.0%	-	-	-	-	5,497
8 North Community Expr	-	-	0.0%	-	-	-	-	3,865
9 Aspen Expr	-	-	0.0%	-	-	-	-	4,124
10 Barranca Expr	-	-	0.0%	-	-	-	-	4,901
11 White Rock Expr	-	-	0.0%	-	-	-	-	4,006
<b>Express route subtotal</b>	<b>-</b>	<b>-</b>	<b>0.0%</b>	<b>-</b>	<b>-</b>	<b>-</b>	<b>-</b>	<b>22,393</b>
12 Bandelier	25,485	26,247	3.0%	15,391	15,370	600.4	595.0	62,491
Dial-a-Ride	109	183	67.9%	928	1,031	57.0	60.3	771
ACT Assist	399	350	-12.3%	3,203	3,156	152.5	174.0	3,207
Special Services	156	2,897	1757.1%	800	2,250	36.0	90.9	4,875
<b>System total</b>	<b>52,117</b>	<b>58,897</b>	<b>13.0%</b>	<b>61,026</b>	<b>64,450</b>	<b>3,044</b>	<b>3,223</b>	<b>265,528</b>



■ 2018 ■ 2019

**Total Passenger Trips to Date: 5,454,837**



Dear Desirae,

Thank you very much for answering all my questions. I am not sure what you did but the alarms were a lot quieter last night and everyone was extremely happy. We appreciate this very much work and understand that certain sacrifices have to be made while the workers get this done. Thanks, again. Have a great day!

Cecilia Duenas

