

# A Proposal for the Installation of Electric Vehicle Charging Stations in Los Alamos County

October 16, 2019  
Los Alamos County  
Board of Public Utilities



LOS ALAMOS

# Project Overview

- Install electric vehicle charging stations at four sites
- Supports the replacement of petroleum-fueled vehicles
- VW settlement grant opportunity
- Project scope is contingent on grant award

# Grant Application Site Criteria

- County-owned property
- Suitability for residents and visitors
- Distribution across the County
- Construction cost
- Proximity to restaurants and entertainment venues
- Americans with Disabilities Act accessibility

# Grant Cost Terms

- Level 2 chargers on Govt. Owned sites: 100% of cost to install and maintain
- DC fast charger on Govt. Owned sites: 75% of cost to install and maintain
- Applicant matching funds will be evaluated; DPU will apply \$150,000 match

# Grant Requirements

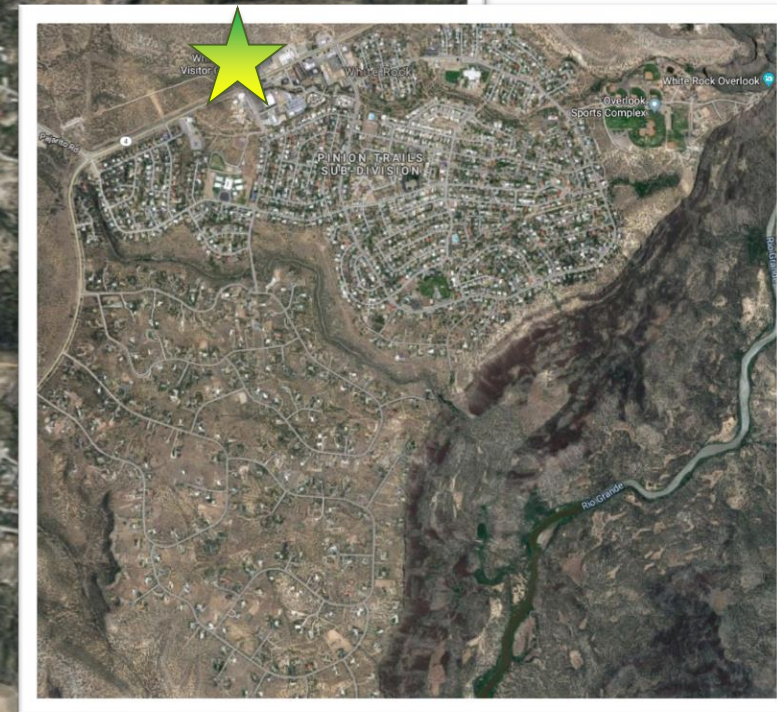
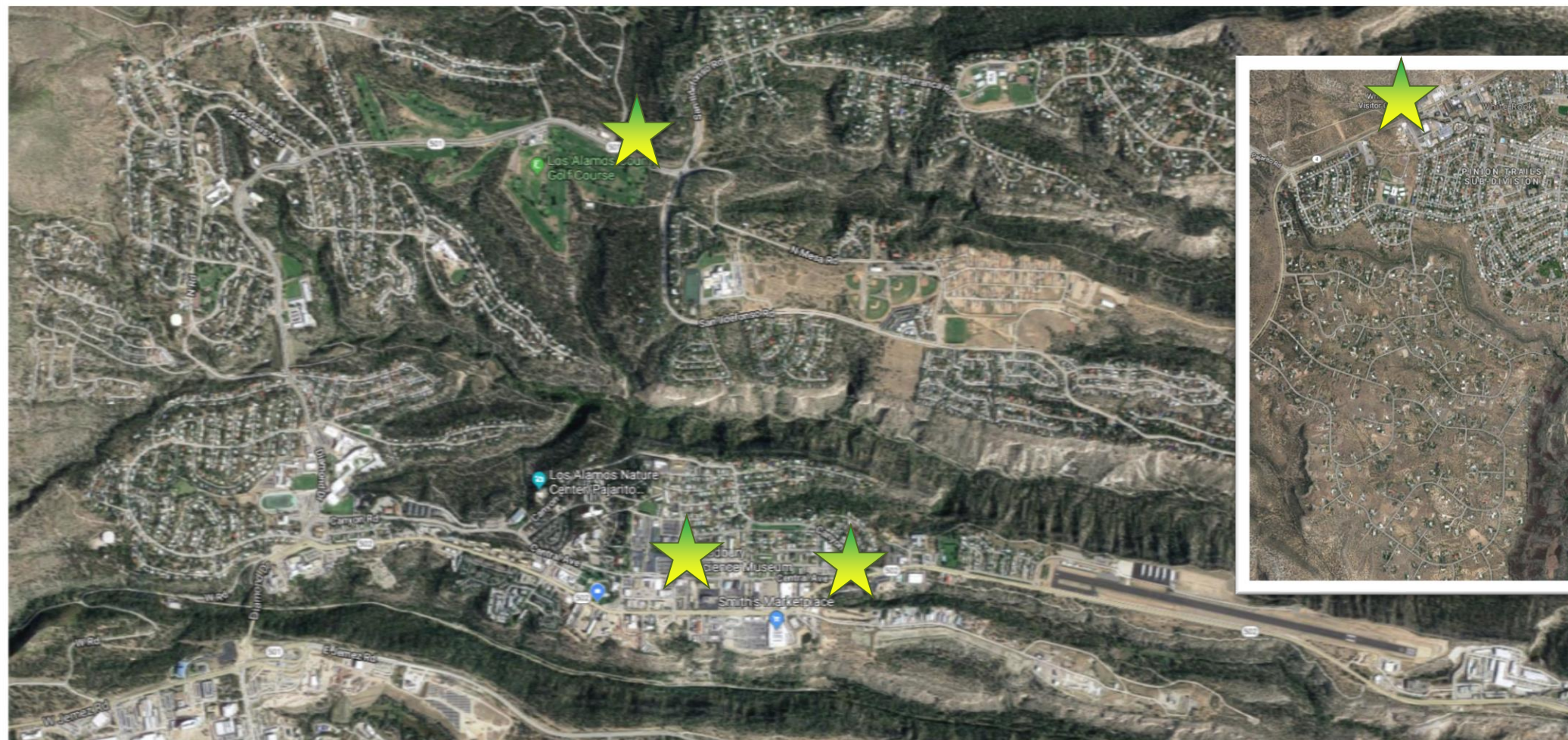
- Provide public access
- Maintain for 10 years
- Must buy charging stations
- Dedicated electric vehicle parking
- Monitor use and energy consumption and share with NMED

# Proposed Sites

- Mesa Library west parking lot
- Golf course
- Municipal building
- White Rock Visitor Center

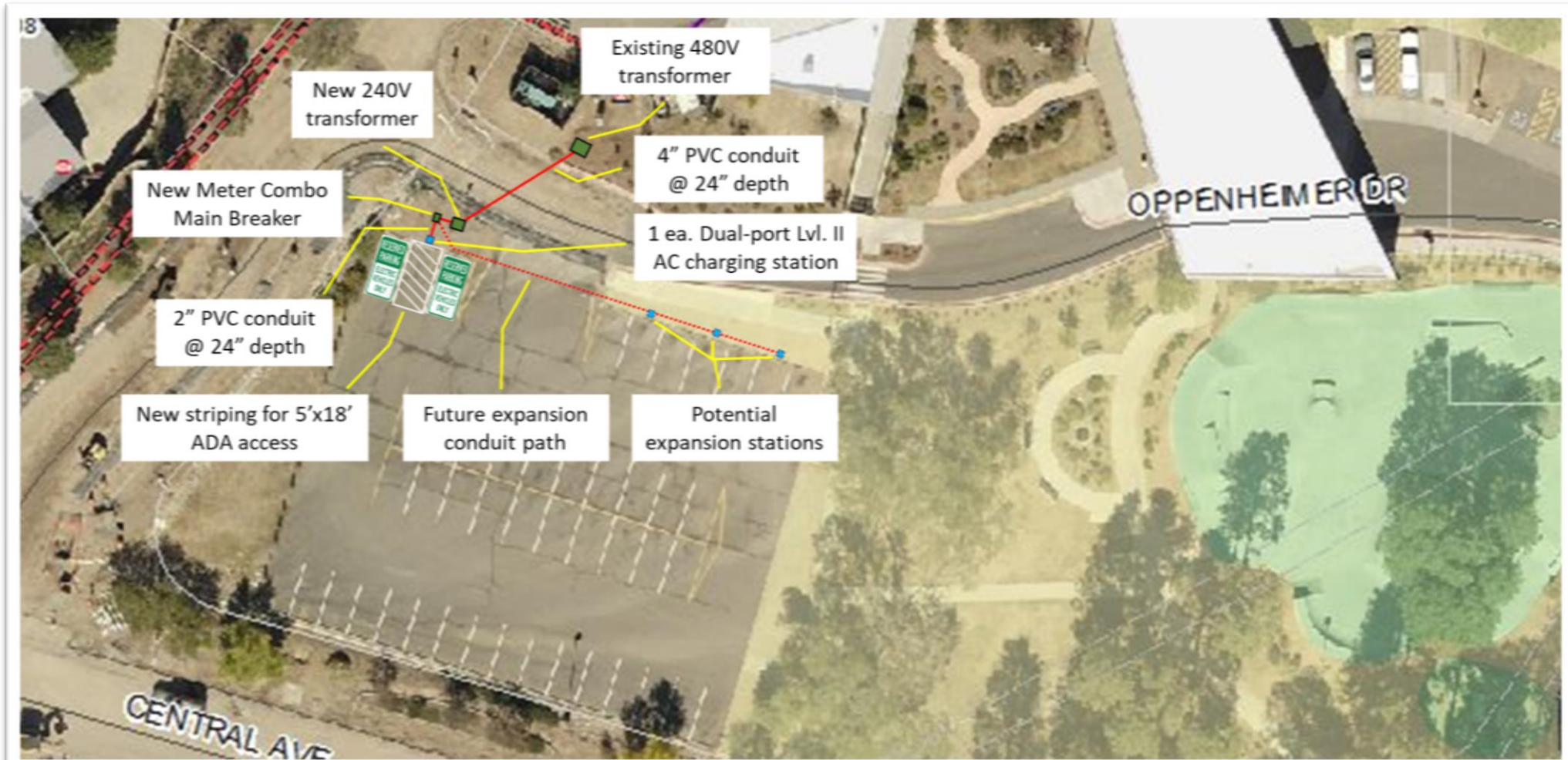


# Site Map



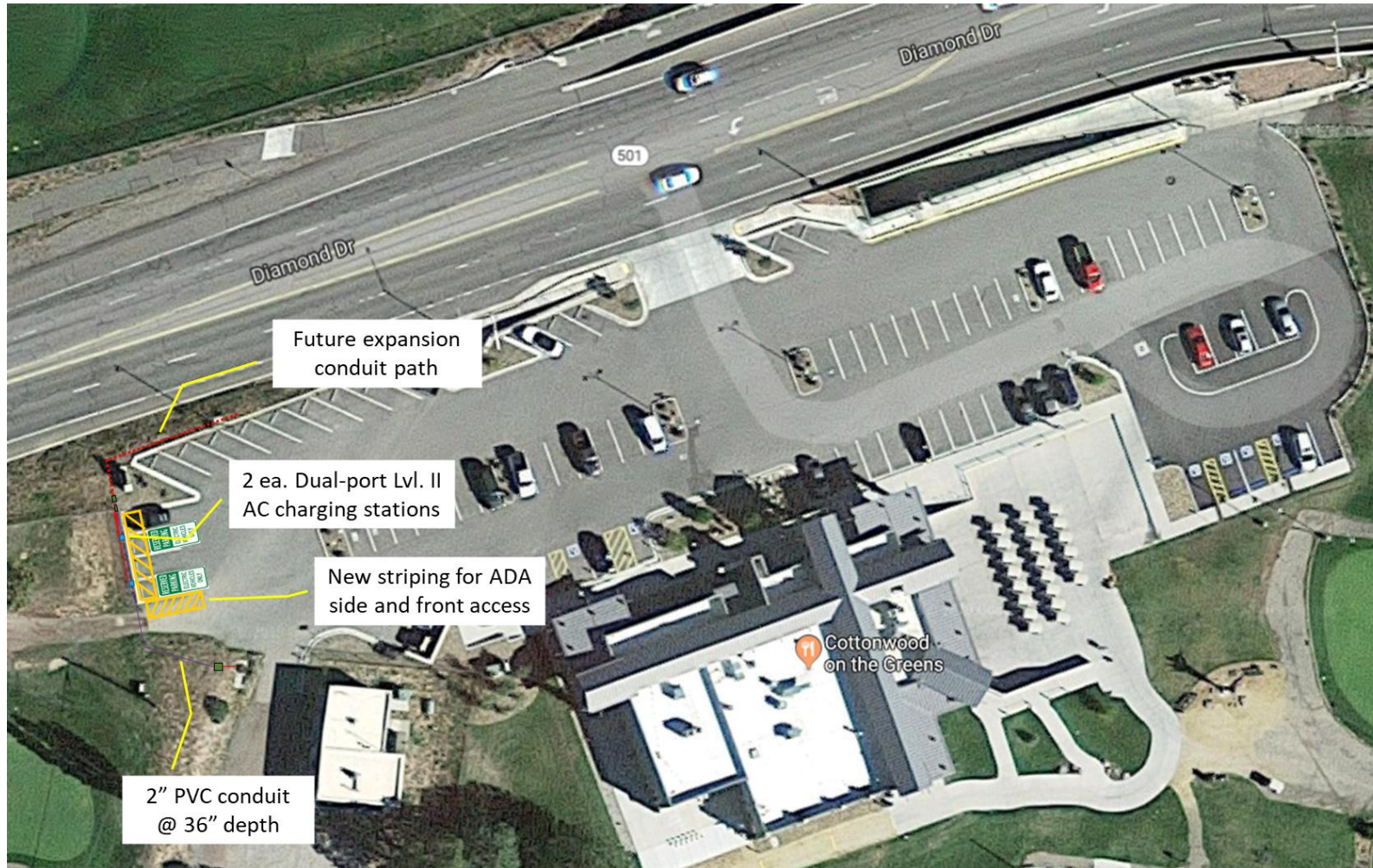


# Mesa Library Site





# Golf Course Site



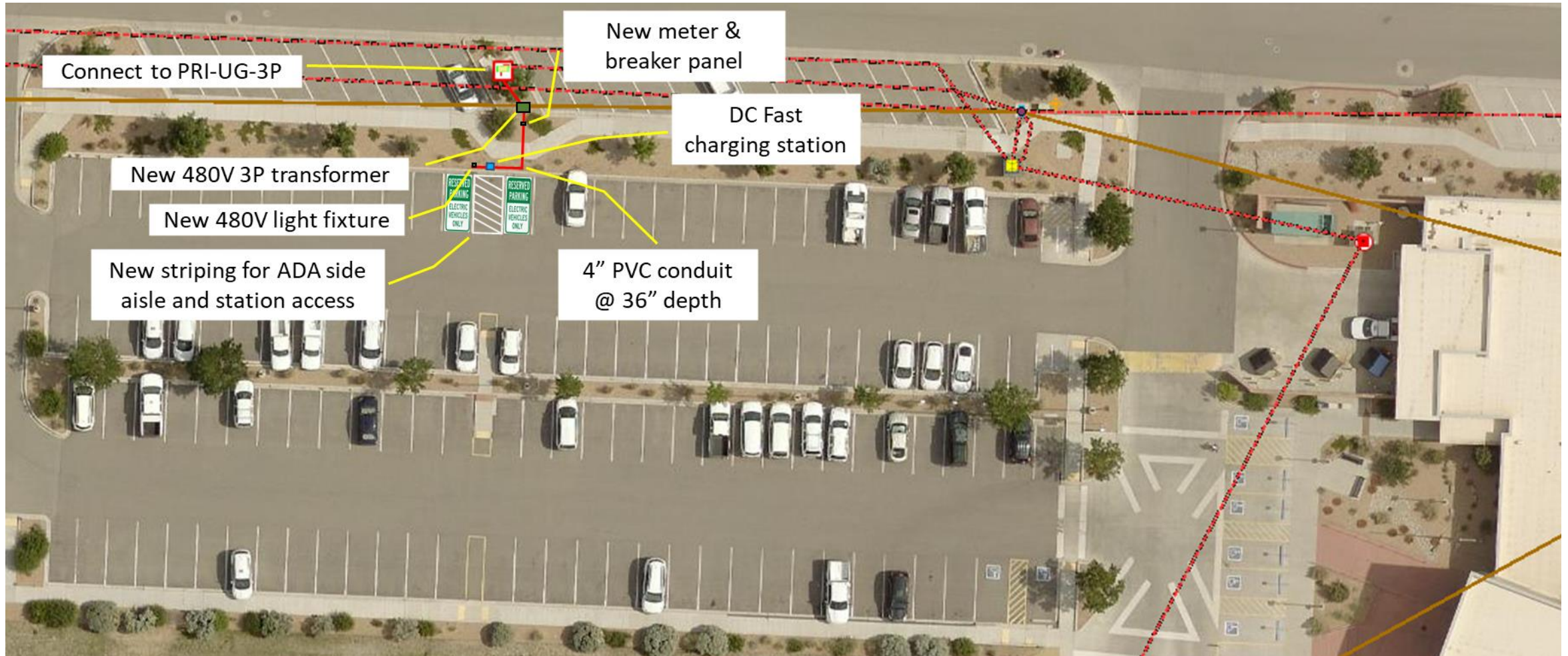
# Golf Course Site



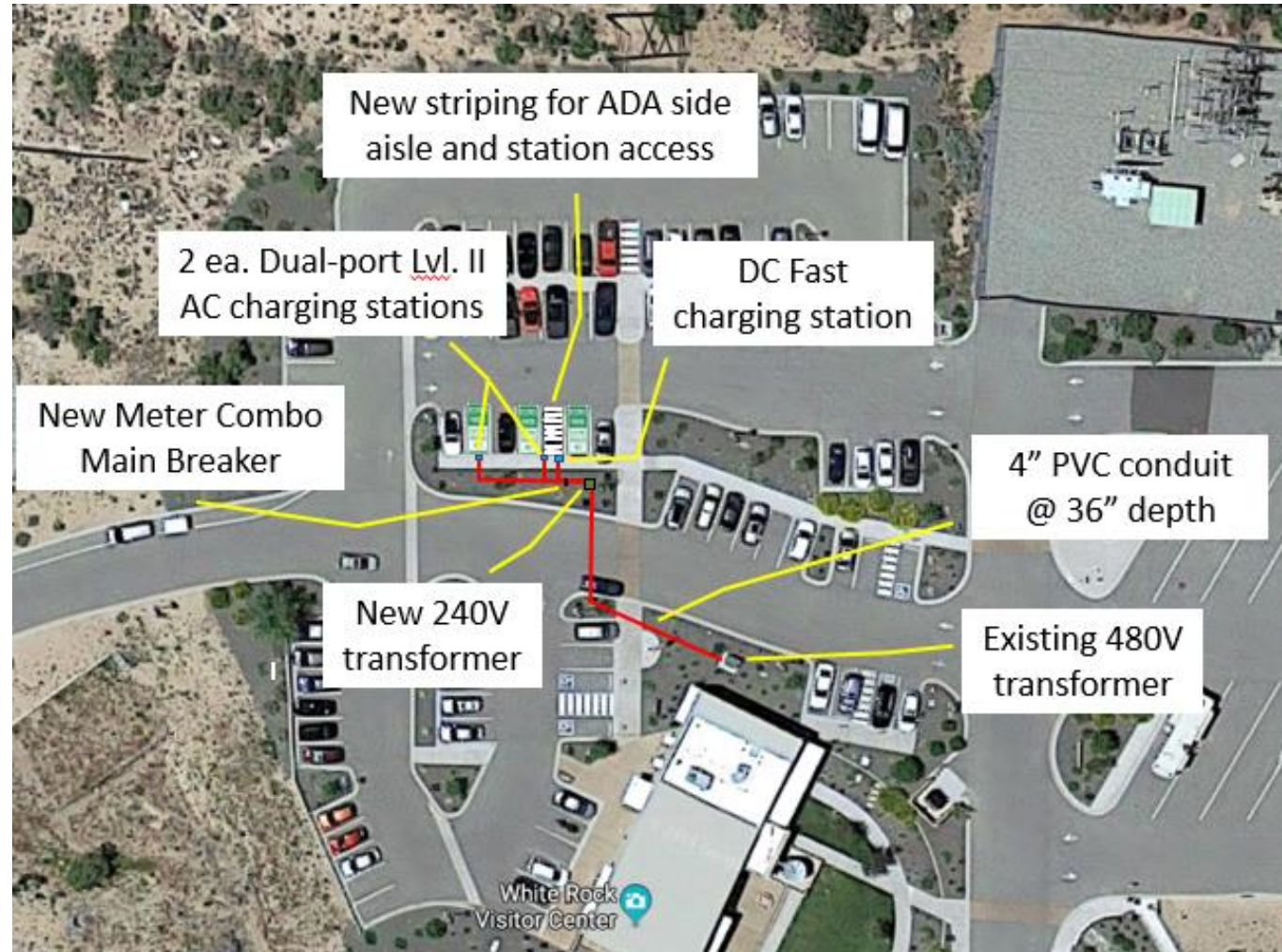
ATTACHMENT B



# Municipal Building Site



# White Rock Visitor Center Site



ATTACHMENT B



# Features

- Dual-port level 2 chargers ~7kW
- DC fast chargers ~65kW
- Networked contactless payment
- Configurable pricing and metrics collection

# Next Steps

- Preparing grant applications now
- The four sites are a start
- DPU will analyze charging station metrics to identify future opportunities for EV charging