


Piñon Park  
SPLASH PAD  
SCHEMATIC  
DESIGN  
WHITE ROCK, NM

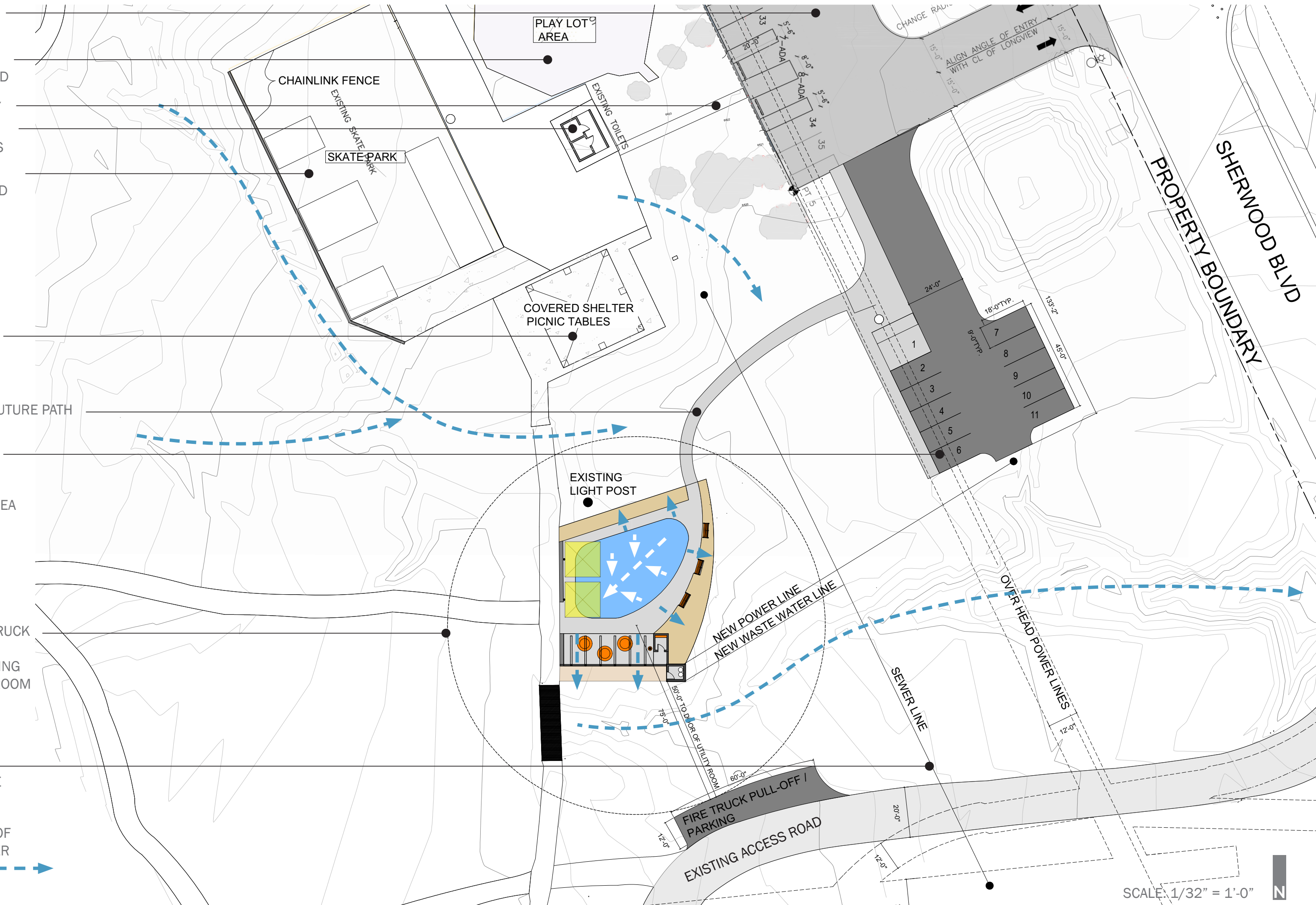
surroundings

NOVEMBER 14, 2019



DIRECTION OF  
STORMWATER  
FLOWS 

## SITE PLAN





PLANTED BUFFER AREA WITH  
METAL EDGING + ROCK MULCH

SPLASH PAD: SOFT SURFACE ON TOP OF 8" CONCRETE  
SLAB (1270 SF)

2 UMBRELLAS 200 SF EACH (PROVIDED BY  
LOS ALAMOS PARK + RECS)

18" H. SEAT WALL MADE OF  
RECYCLED SHUFFLE BOARD COURTS

EXISTING PATH

BENCH TYP.

4" CONCRETE PAVING, STANDARD GREY

CANTILEVERED SHADE STRUCTURE (460 SF)

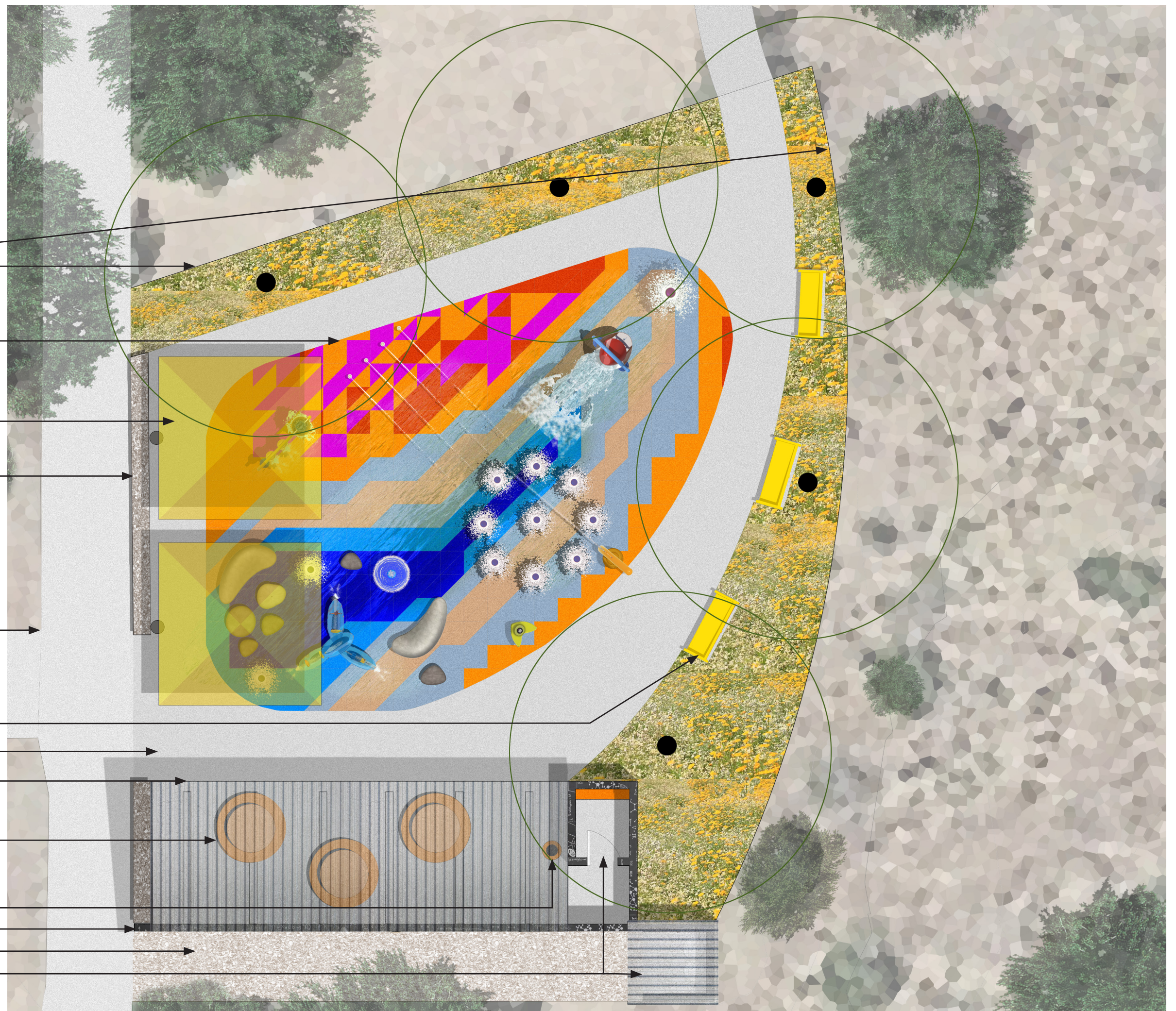
TABLE TYP.

TRASH / RECYCLE BIN

6' H. CINDER BLOCK MURAL WALL

GRAVEL MAINTENANCE PATH

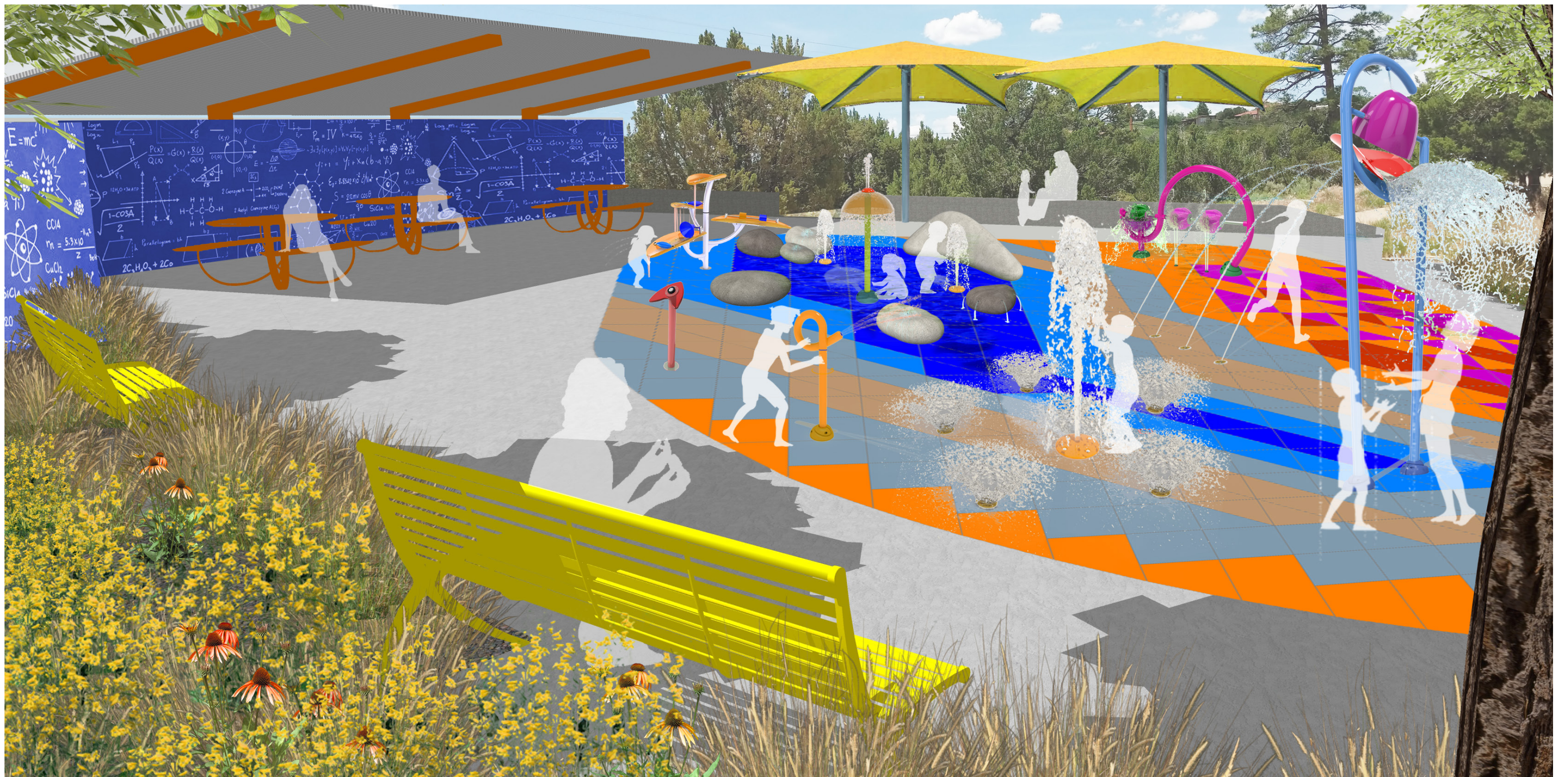
UTILITY (50 SF) + CHANGING ROOM (50 SF)



SCALE: 1/8" = 1'-0"

RENDERED SITE PLAN





SCHEMATIC RENDERED VIEW

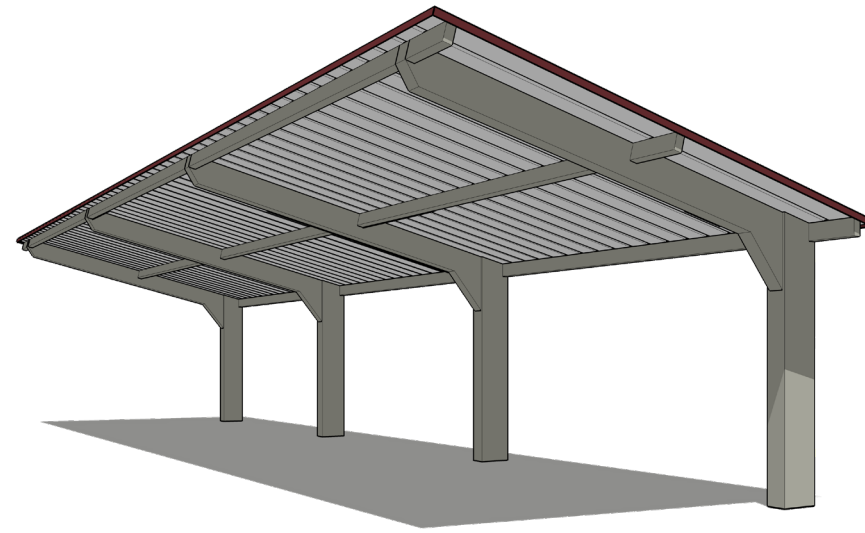




SITE FURNITURE (BELSON - WILMINGTON COLLECTION BENCH)



TRASH AND RECYCLING RECEPTACLES



SINGLE SLOPE SHADE STRUCTURES (OFF THE SHELF CAR PORT OR DUG OUT)  
<https://coverworx.com/steelworx-2/steelworx-cantilevered-monoslopes-dugouts/>



OPEN AIR CHANGING ROOMS (ADD ALT)



SOFT SURFACE FLOORING - LIFEFLOOR

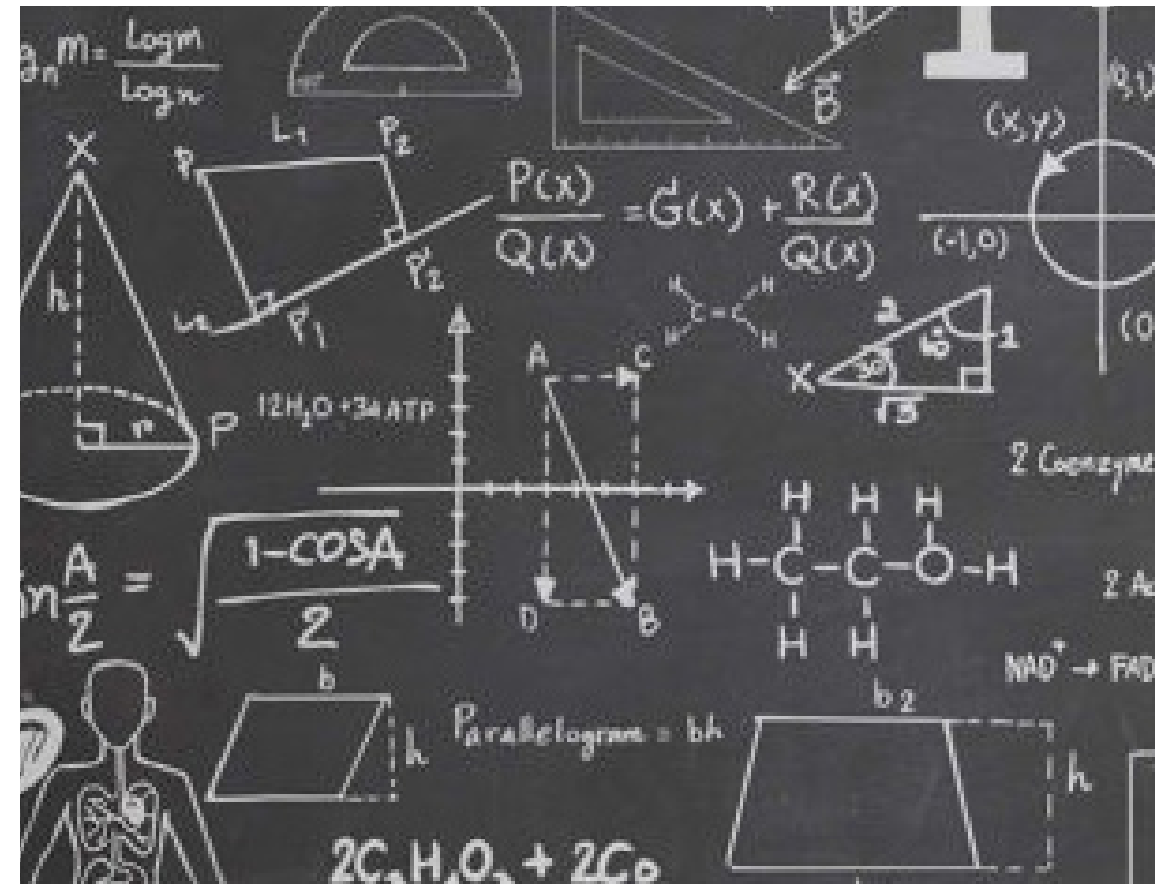
OR



NON-SLIP INTEGRAL COLOR CONCRETE



SEAT WALLS - RECYCLED CONCRETE FROM DEMOLISHED SHUFFLE BOARD COURTS



ART MURAL FUNDED BY ART IN PUBLIC PLACES

## PROPOSED SITE MATERIALS & AMENITIES





WATERPLAY -  
SPROUT




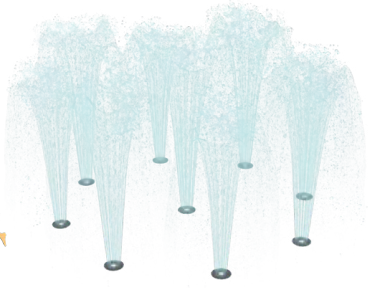
1 ACTIVATION BUTTON

VORTEX - TUBE #1


14

WATERPLAY - GROUP VOLCANO

15

VORTEX - TWINSPLASH



19

WATERPLAY -  
SURF STONE 3



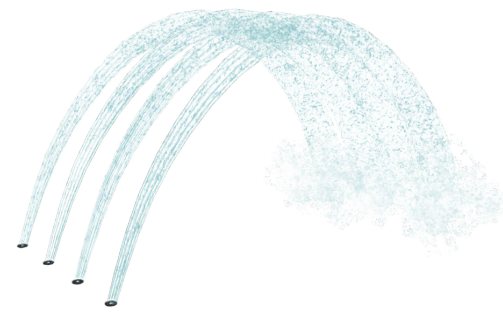
2

WATERPLAY - WATERFALL #3




11

WATERPLAY - SPRAY TUNNEL 4





16

WATERPLAY -  
SURF STONE 1



3

VORTEX -  
FOAMING  
GEYSER #2



12 + 13

WATERPLAY - FOUNTAIN MOUNTAIN




17

VORTEX -  
AQUALIEN  
FLOWER #3

4

WATERPLAY -  
SAND STONE 1



9 + 10

WATERPLAY -  
SAND STONE 3



5 + 7

WATERPLAY -  
SAND STONE 2



6 + 8

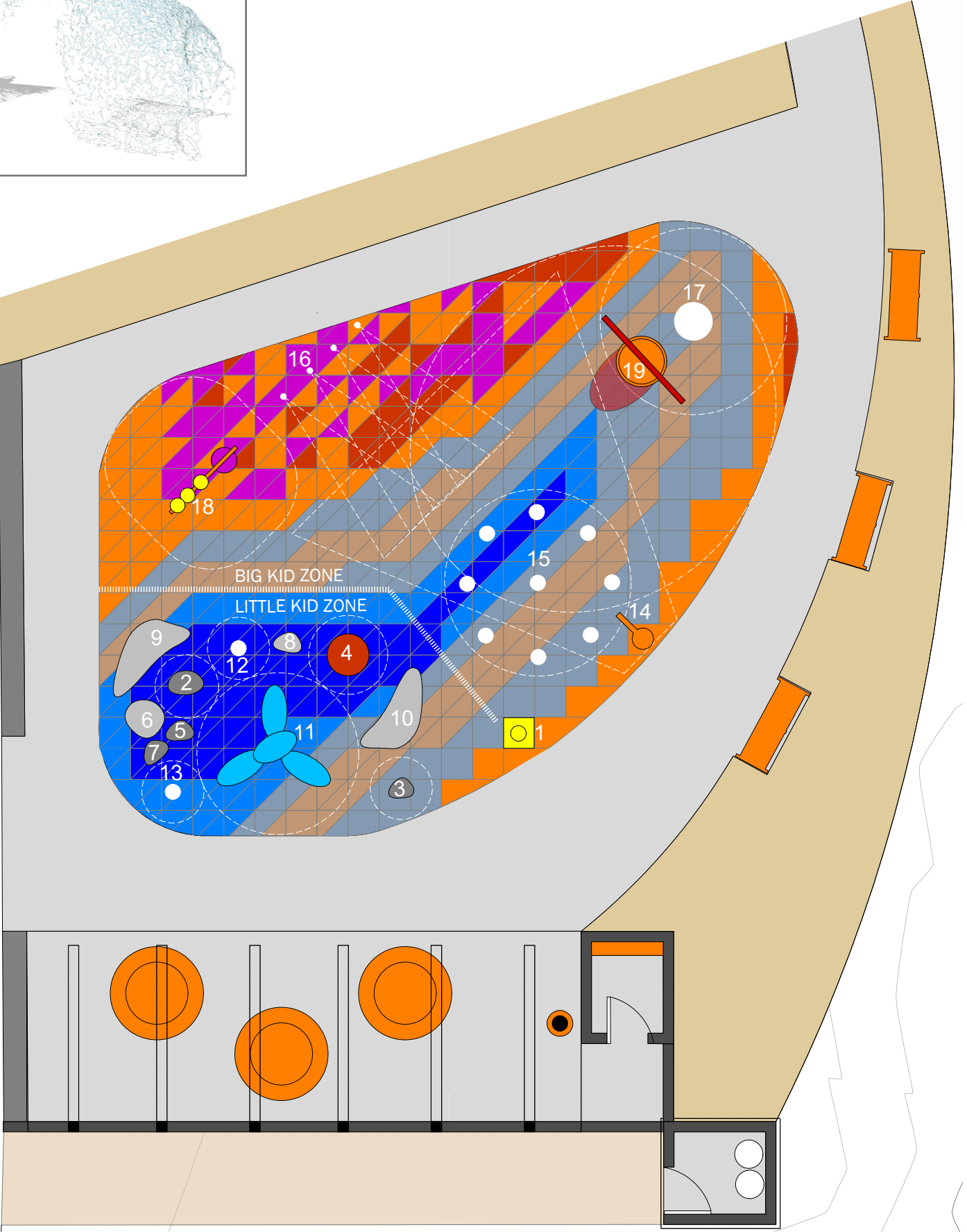
VORTEX - LUNA #2




18

# SPLASH PAD FIXTURES

(subject to change)





Item	Program Elements	Cost
Site Development	Grading, Infrastructure, Landscape, Paving, Re-seeding	\$154,000
Splash Pad	Splash Pad, Pump House	\$255,000
Subtotal		\$409,000
Project Costs	Contractor Requirements (bonding, insurance, temporary facilities, mobilization) (9%), Survey/Geotech/Design (10%), Contingencies (15%), NMGR T (7.3125%), 2016 to 2018 construction escalation factor (3%/yr) 6%, Arts (1%)	\$225,000
Sub total		\$634,000
Bid Alternate	Shade Structure, Furnishings, Prefabricated Changing Stalls	\$86,000
Grand Total		\$720,000

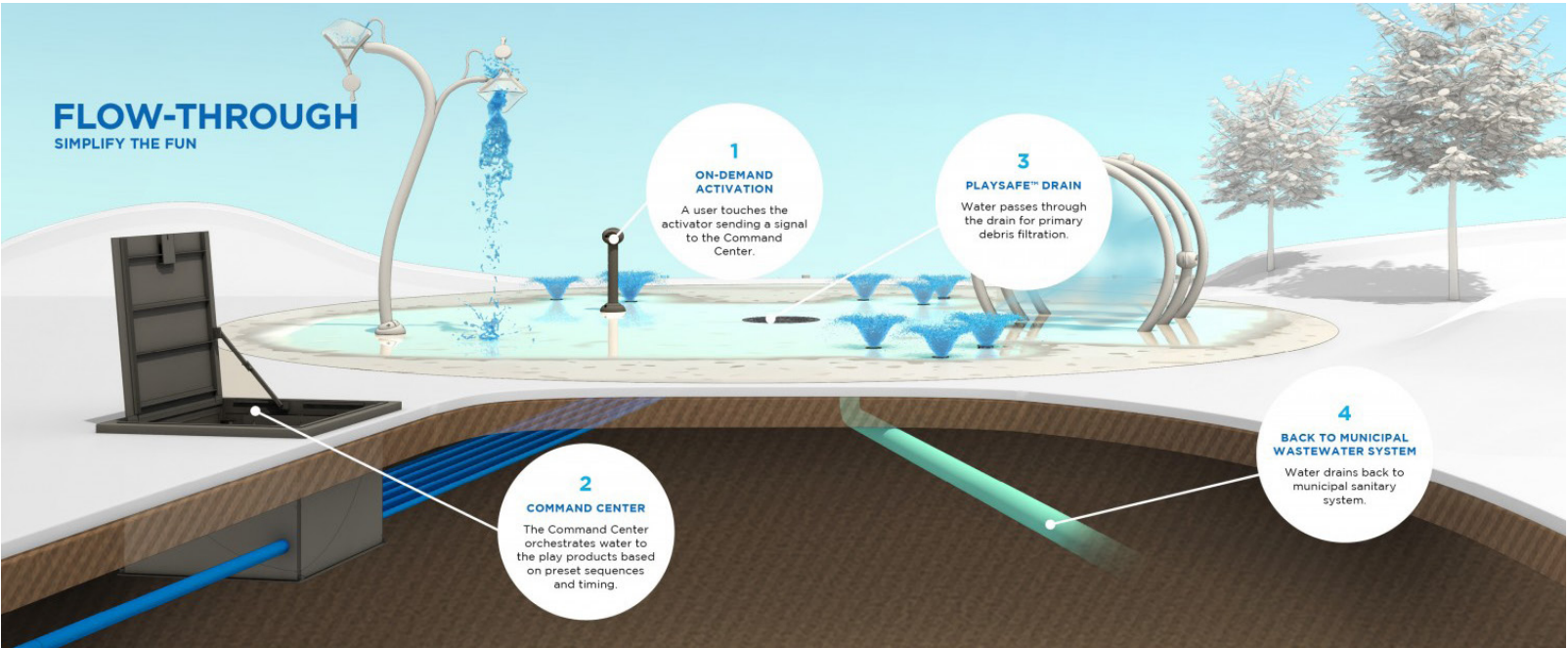
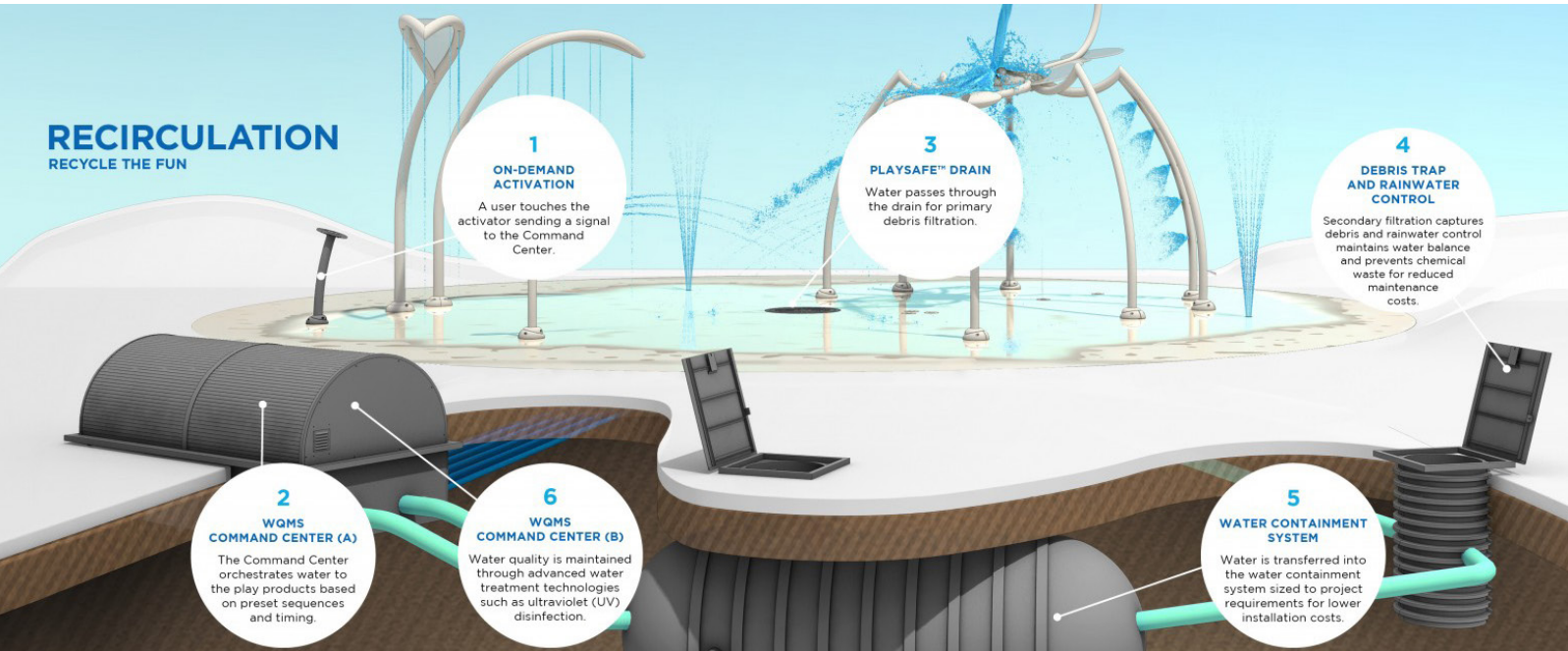
ORIGINAL MASTER PLAN BUDGET

CAPITAL ESTIMATED COSTS	RECIRCULATION SYSTEM	FLOW THROUGH SYSTEM	DIFFERENCE
TOTAL PROJECT BUDGET	\$ 720,000	\$ 720,000	
Design Costs w/NMGRT	\$ 71,298	\$ 71,298	
Construction Costs w/NMGRT	\$ 587,671	\$ 491,270	
15% Construction Contingency	\$ 88,151	\$ 73,690	
1% APP	\$ 7,200	\$ 7,200	
TOTAL CAPITAL COSTS	\$ 754,320	\$ 643,458	\$ (110,862)
OVER/UNDER BUDGET	\$ (34,320)	\$ 76,542	

ESTIMATED CONSTRUCTION COSTS

Construction Costs Include:

- 19 Water Spray Features
- MEP fixtures
- Landscaping
- Shade Structure
- Changing Room
- Hardscape
- Site Furniture
- Art Mural Wall
- Lifefloor (soft safety surface)



WATER SYSTEM OPTIONS