



Residential Sustainability Report

Service Period: January 2020

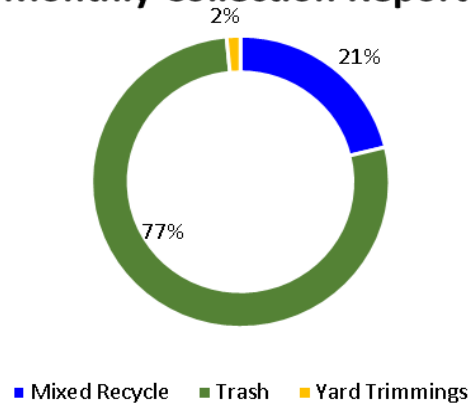


LOS ALAMOS

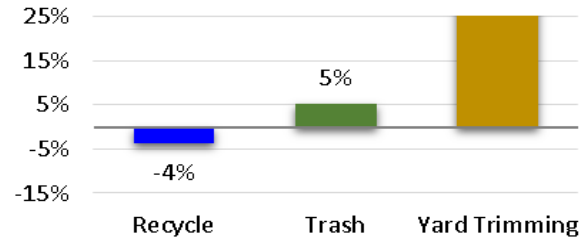
January Diversion Rate: **23%**

The *diversion rate* is the percent of recyclable and compostable material diverted from the landfill.

Monthly Collection Report

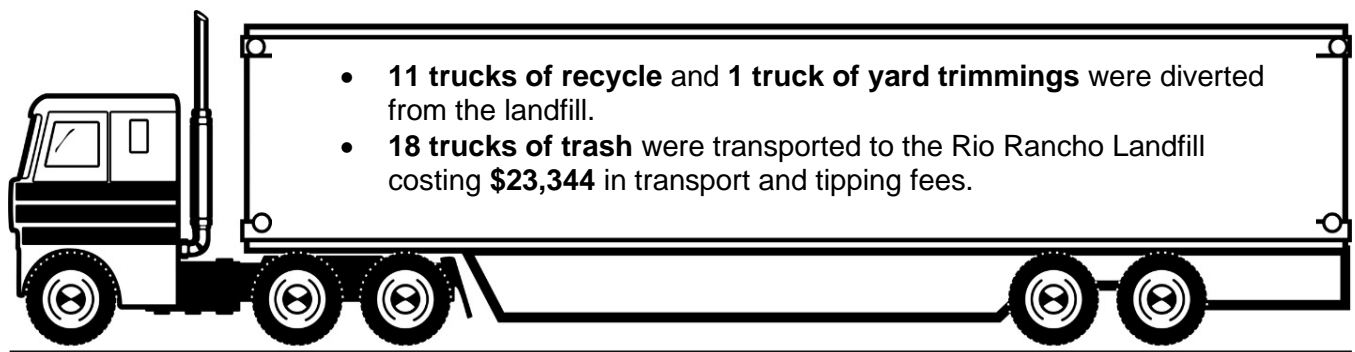
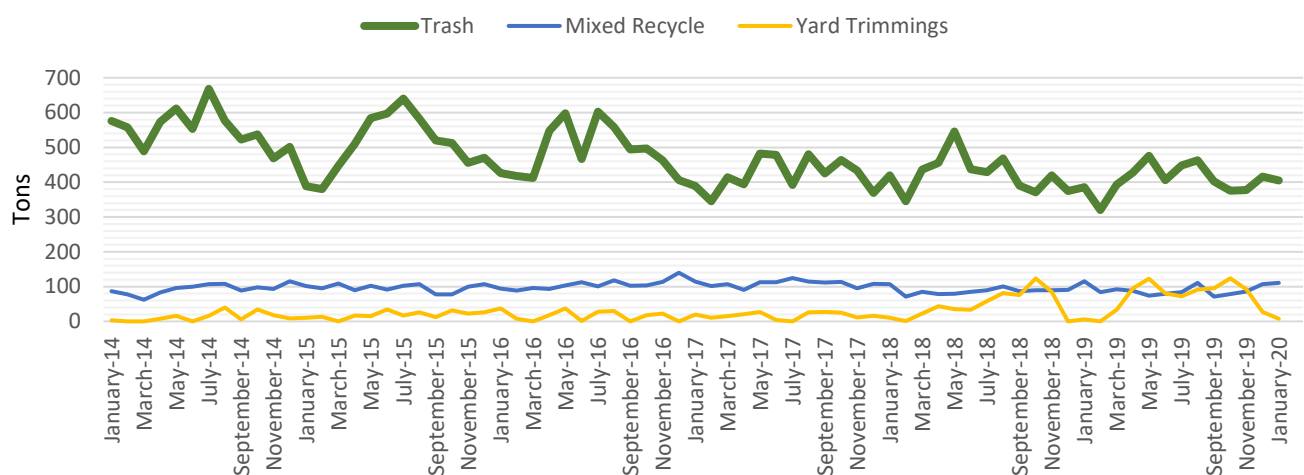


% Change Previous Year



	Jan-19	Jan-20
Yard Trimming	5.48	7.89
Recycle	115.29	110.97
Trash	385.15	405.01

In January by recycling and composting Los Alamos County reduced GHG emissions by ~397 tons



For more information contact Environmental Services Division at 505.662.8163 or email solidwaste@lacnm.us