

A scenic view of a desert canyon. In the foreground, there are large, reddish-brown rock formations with some green vegetation growing on them. The middle ground shows a deep canyon with a dense forest of green trees. In the background, there are more red rock cliffs and distant mountains under a blue sky with scattered white clouds.

# **Adopt-a-Trail Project, Los Alamos**

**Celeste Raffin, MD  
Open Space Working Group**



# Los Alamos County Open Space and Trail Facts:

- Over 4,000 county owned acres of designated open space
- Approx 58 miles of trails
- Wide variety of trails including Paved, ADA compliant, hardened, and natural trails.
- Diverse spectrum of difficulty and length.
- Trails that appeal to hikers, equestrians, trail runners, mountain bikers, and mobility challenged.
- Los Alamos County Parks Division is responsible for the management of the open space and trail network
- Current Open Space Manager is Eric Peterson

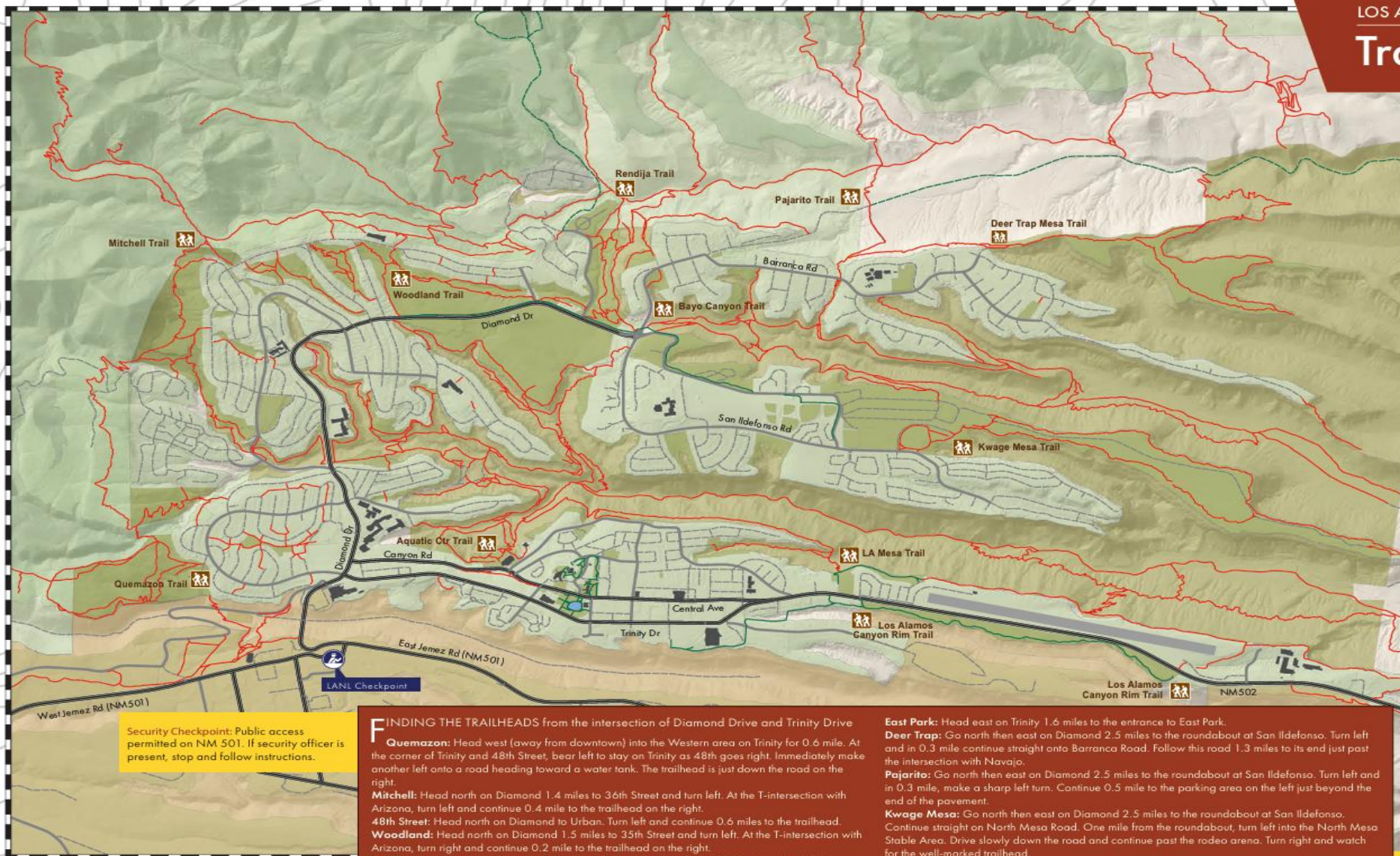


# Trail Network Map

## LEGEND

TRAIL	
HARD-SURFACED PATHWAY	
DIRT ROADS	
TRAILHEAD	
LOS ALAMOS COUNTY OPEN SPACE	
SANTA FE NATIONAL FOREST	
DEPARTMENT OF ENERGY	

THE LOS ALAMOS COUNTY TRAIL NETWORK, along with routes in the surrounding Santa Fe National Forest, offers hikers, runners, mountain bikers, and equestrians more than 75 miles of trail to explore. Trails range from 5,400 feet in White Rock Canyon to 10,454 feet near the summit of Caballo Mountain. Most trails are easy to follow, but may be rough, steep, and challenging for all trail users. The County Trail Network is for non-motorized use only. Additional information is available at trailhead kiosks around the community and at the County Customer Care Center.



Security Checkpoint: Public access permitted on NM 501. If security officer is present, stop and follow instructions.

**FINDING THE TRAILHEADS** from the intersection of Diamond Drive and Trinity Drive

**Quemezop:** Head west (away from downtown) into the Western area on Trinity for 0.6 mile. At the corner of Trinity and 48th Street, bear left to stay on Trinity as 48th goes right. Immediately make another left onto a road heading toward a water tank. The trailhead is just down the road on the right.

**Mitchell:** Head north on Diamond 1.4 miles to 36th Street and turn left. At the T-intersection with Arizona, turn left and continue 0.4 mile to the trailhead on the right.

**48th Street:** Head north on Diamond to Urban. Turn left and continue 0.6 miles to the trailhead.

**Woodland:** Head north on Diamond 1.5 miles to 35th Street and turn left. At the T-intersection with Arizona, turn right and continue 0.2 mile to the trailhead on the right.

**Rendija:** Head north on Diamond 2.2 miles to Range Road and turn left. Continue 0.4 mile to a parking area on the right.

**Bayo Canyon:** Go north then east on Diamond 2.5 miles to the roundabout at San Ildefonso. Park in the wide area on the left.

**Kinnikinnik Park:** Head north on Diamond 0.1 mile to Canyon and turn right. In 0.4 mile, turn left into the aquatic center parking.

**East Park:** Head east on Trinity 1.6 miles to the entrance to East Park.

**Deer Trap:** Go north then east on Diamond 2.5 miles to the roundabout at San Ildefonso. Turn left and in 0.3 mile continue straight onto Barranca Road. Follow this road 1.3 miles to its end just past the intersection with Navajo.

**Pajarito:** Go north then east on Diamond 2.5 miles to the roundabout at San Ildefonso. Turn left and in 0.3 mile, make a sharp left turn. Continue 0.5 mile to the parking area on the left just beyond the end of the pavement.

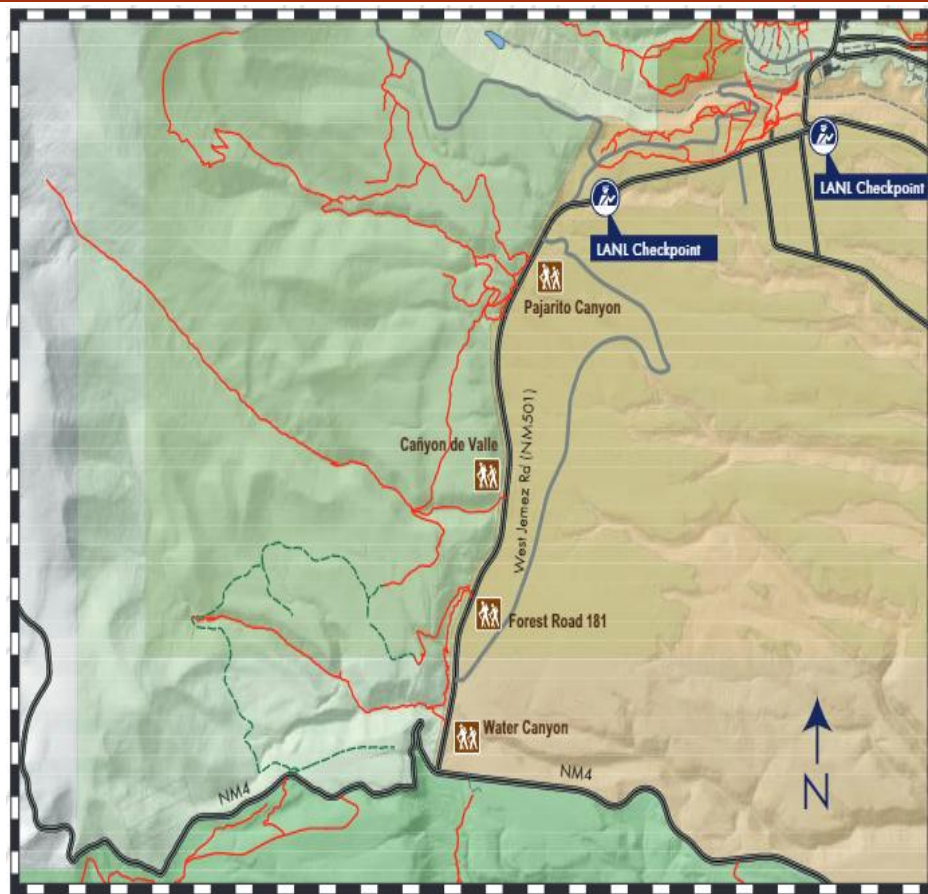
**Kwage Mesa:** Go north then east on Diamond 2.5 miles to the roundabout at San Ildefonso. Continue straight on North Mesa Road. One mile from the roundabout, turn left into the North Mesa Stable Area. Drive slowly down the road and continue past the rodeo arena. Turn right and watch for the well-marked trailhead.

**Pine Street:** Head east on Trinity 1.2 mile to 15th Street. Turn left and continue 0.5 mile to the intersection with Canyon. Turn right and in 0.2 mile, turn left onto Pine. Find parking at the end of Pine Street.

**Pueblo Canyon:** Head east on Trinity (NM 502) through downtown and past the airport to the White Rock interchange. Carefully turn left at the entrance to the highway yard and park in the dirt lot to the left of the gate (do not block either entrance).



Department of Energy Trails: Trails on Department of Energy land are subject to regulations and policies established by the DOE and Los Alamos National Laboratory. Trail closures are possible at any time. Please observe all posted closures.



## Bottom Line:

Los Alamos residents love their trails

In one survey 87% of respondents stated that they had used the Los Alamos Trail network in the past year,  
57% stated they used the trail network 12 or more times a year

Los Alamos Open Space Management Plan 2015

# Los Alamos Trails are under constant pressure from human and environmental factors

- Steep Terrain
- Fragile Soils
- Arid climate with monsoon rains, flash flooding, wind events, fires, and heavy snowfalls
- Old trails
- vegetation
- Humans
- Feral cattle



Bayo Canyon Bench Loop, March 2025

The County is doing a great job, but they need help!  
(maybe our trail loving locals could step up)

# Los Alamos County has an adopt a trail program, but almost no one signs up

- Spring 2024, program review
- ?Would I sign up for the program?

**NO!**

**Why?**

Time Commitment: many hours and long duration

No end point

No clear description of task

Designed for groups not individuals

No options other than trail choice

**We are all busy, most of us want directed finite tasks, with clear beginning and end times, and on our schedule.**

# What do other programs do?

- City of Albuquerque Trail Watch Volunteer Program
- Keep Las Cruces Beautiful Adopt a Spot Program
- New Mexico Volunteers for the Outdoors
- Friends of Sandia Mountain Adopt A Trail
- City of Santa Fe Adopt-A-Park/Trail
- Enchanted Circle Trail Association
- Los Alamos County Adopt-A-Road Program
- American Trails, Trail Ambassador Program, tips and tricks best practices webinar
- Eppley Center for Parks And Public Lands Foundation of Sustainable Trails 5-part course

Use the good ideas from these programs and create a program unique for the special needs and circumstances of the Los Alamos County Open Space and Trail System

**Plan:** Set people up for success by designing a program that is **SMART**

- **S**pecific
- **M**easurable
- **A**chievable
- **R**elevant
- **T**ime bound

# Adopt-A-Trail Project, Los Alamos

## • Mission Statement

A citizen volunteer program, run by the Los Alamos County Parks Division, whose mission is to monitor, maintain, improve, protect, and preserve Los Alamos County Open Space Trails

## • Goals:

Provide achievable opportunities for Los Alamos County Trail Users to become actively involved in surveillance and maintenance of our county trail system

Educate Trail users so that they can spot trail issues, improve existing trails, and help preserve and protect our precious trails

Promote a culture of trail stewardship in Los Alamos County

Become a valued “go to” resource for the Los Alamos County Parks Division

*We're not giving up on Adoptions, We're just changing the way we adopt!*

# **Adopt-A-Trail Project**

**Three types of Trail Stewardship opportunities called adoptions**

- **Organized Adoptions**
- **One Day Adoptions**
- **Custom Adoptions**

# Organized Adoption

- Organized, scheduled, one day event run by County Open Space Staff
- Typically, one per month during season, from 9 am to 1 pm
- Great opportunity to learn about trail maintenance, meet county trail staff, get to know like minded volunteers
- Well organized, equipment provided, start and end times, experience needed, and difficulty all described
- Drawbacks: designated day, requires staff participation, limited opportunities for trail work (approx. 8 events per year)
- Plan: keep as is, incorporate into the **Adopt-A-Trail Project**
- Sign up via **Adopt-A-Trail Project** web site

Search Site...

Search

Home / Initiatives **/Adopt-A-Trail Project**

## Adopt-A-Trail Project

The Los Alamos County Adopt-A-Trail Project provides a great opportunity for Trail Lovers to Watch Over, Maintain, and Protect the trails we love.

### Contact Us

Eric Peterson  
Open Space Specialist  
(505) 663-1776

Adopt-A-Trail Project offers three ways to adopt a trail, for info and sign up click on one of the links below:

**Organized  
Adoption**

**ONE DAY  
Adoption**

**Custom  
Adoption**

**Organized Adoptions:** Monthly opportunities to work with County Open Space Staff on trail maintenance projects. Learn about trails from the pros, meet like minded trail adopters, and help keep Los Alamos Trails sustainable.



JULY 2025						
SUN	MON	TUE	WED	THU	FRI	SAT
		1	2	3	4 Independence Day	5
6	7	8	9	10	11	12
13	14	15	16	17	18	19
20	21	22	23	24	25	26
27	28	29	30	31		

Organized Adoption

# July Volunteer Day

## Rendija/Deer Trap Trail

### SATURDAY, July 19th, 2025

Join Los Alamos County Open Space and Trails as we work to maintain Rendija and Deer Trap Mesa trail. Volunteers will work in small groups to improve trailhead access, repair sections of eroded trail, build water diversions and rock steps.

#### MEETING TIME:

9 am to 1 pm, Saturday, July 19th

#### LOCATION:

Rendija Canyon Trailhead  
(Guaje Canyon Rd )

#### WHAT TO BRING:

Please wear boots, gloves, long pants and long sleeve shirt, Bring water and snacks for the day.

#### WHAT'S PROVIDED:

Los Alamos County will provide all the tools necessary for the project.

#### EXPERIENCE/DIFFICULTY NEEDED:

This project will require volunteers to use hand tools for trail maintenance and perform light vegetation removal along the trail.

**LOS ALAMOS**  
Parks and Open Space



Adopt

**REGISTRATION IS LIMITED TO 20 PEOPLE**



#### QUESTIONS?

Contact Eric Peterson  
eric.peterson@lacnm.us  
505.663.1776

## Los Alamos County Adopt-a-Trail application Organized Adoption

Date

Name

Address

Phone Number

Email Address

**July Volunteer Day, Rendija, Deer Trap Trail**

**Saturday July 19, 2025 9am-1pm**

**Rendija, Deer Trap Mesa Trail**

**release form  
please complete**

# One Day Adoption

- Trail adoptions designed to be completed in one day or less
- Two types of adoption pathways: Trail and Task
- **Trail:** click on a trail name and all the current tasks for that trail will be listed
- **Task:** click on a task (example trash pick up) and all the trails that require trash pick ups will be listed
- Adopter gets to choose the date work will be completed
- Adopters will be able to sign up on line by selecting the trail and/or task and entering the date they wish to do the work.
- Program Coordinator will reply to Adopter via email to confirm
  1. adoption type
  2. date work will be performed
  3. necessary equipment
  4. training (if applicable)
  5. Release forms
  6. Check in and Check out

# One Day Adoption, cont.

- **Easy Adoption tasks:** Trail Assessments, trash pickup, PR
- **Moderate Adoption task:** Clipping brush, easy trail tread fixes, noxious weed removal
- **Difficult Adoption Task:** retaining walls, water bars, stair repair, involved brush removal
- Must also consider length, topography, steepness of trail, travel time to site in assigning difficulty



Search Site...

Search

Home / Initiatives **/Adopt-A-Trail Project**

## Adopt-A-Trail Project

The Los Alamos County Adopt-A-Trail Project provides a great opportunity for Trail Lovers to Watch Over, Maintain, and Protect the trails we love.

### Contact Us

Eric Peterson  
Open Space Specialist  
(505) 663-1776

Adopt-A-Trail Project offers three ways to adopt a trail, for info and sign up click on one of the links below:

**Organized  
Adoption**

**ONE DAY  
Adoption**

**Custom  
Adoption**

# Adopt-A-Trail Project: One Day Adoptions

**Adopt-A-Trail Project** One Day Adoptions are trail work projects designed to be completed in one day or less. You get to choose the project and the day you wish to do it. You may choose from a variety of projects. Either pick the trail you wish to work on or the trail task you wish to do.

Trail work will be rated by difficulty

Training necessary for each task will be described

Tools for each task will be supplied by the county

Check in and check out requirements will be outlined

Trail

Task

# Adopt-A-Trail Project: Adopt by Trail

Acid Canyon Trail

Barranca Crossing

Barranca Mesa  
North Rim Trail

Bayo Canyon Trail

Blue Dot Trail

Camp Hamilton

Canada Del Buey

Canyon Rim Trail

Deer Trap Mesa

Deer Trap Mesa  
Loop

Dot Grant Trail

East Fork Trail

Fireline Trail

Gonzales Road

Graduation Canyon  
Trail

Homestead Crossing  
Trail

Kinnikinnik Park

Kwage Mesa Trail

Los Alamos Mesa  
Trail

Mitchell Trial

North Bayo Bench  
Trail

North Pueblo Bench  
Trail

North Pueblo Trial

Olive Street Nature  
Trail

Ottowi Mesa Trail

Perimeter Trail

Pueblo Canyon  
Trail

Pueblo Canyon  
Rim Trail

Quemazon Nature  
Trail

Quemazon Trail

Ranch School  
Trail

Red Dot Trail

River Trail

Satch Cowan Trail

School Canyon  
Trail

South Bayo  
Bench Trail

Tent Rocks Trail

Upper Pueblo  
Trail

Upper Walnut  
Trails

Walnut Canyon Trail

Walnut Canyon  
Rim Trail

White rock Canyon  
Rim Trail

Woodland Trail

Zipline Trail

Select a Trail for  
available adoption  
opportunities

# Adopt-A-Trail Project: Adopt by Trail

## North Bayo Bench Trail



Trail Assessment



Trash Pick Up



PR



Noxious Weed Removal



Brush Trimming



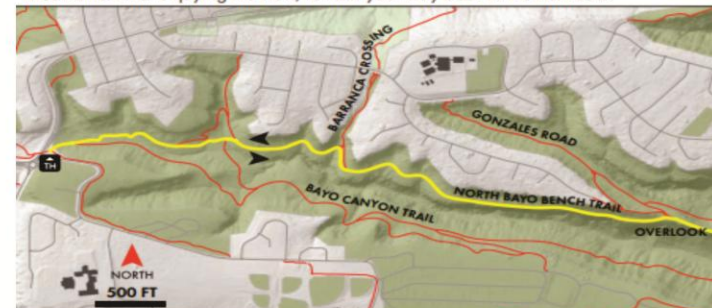
Erosion Control

LENGTH: 3.2 MILES OUT-AND-BACK	ELEVATION GAIN: 200 FEET
FITNESS LEVEL: EASY	FEATURES: WAGON RUTS, VIEWS
TRAIL SURFACE: PACKED DIRT	MOUNTAIN BIKE SKILL LEVEL: EASY

The North Bayo Bench Trail is an historic road ending at a viewpoint overlooking the orange-walled Bayo Canyon. This out-and-back trip is easy travelling with little elevation change. Along the way you can find ruts worn into the volcanic rock by wagon traffic more than 100 years ago.

From the kiosk, take the wide trail leading into the sledding bowl. At the east side of the bowl, take the left fork. After a few minutes, follow the ruts worn by wagons coming to homesteads on the mesa. Stay left at a slickrock trail junction. The trail now traverses along a bench about 50 feet below the mesa top. Along the way, you can enjoy the orange cliff which is volcanic tuff and the interesting growth forms of ponderosa pines surviving on thin soils and not much water.

After about 1.5 miles, go right and take a short spur trail to the Bayo Canyon overlook point. The scene encompasses the canyon, Barranca Mesa, and the Sangre de Cristo Mountains. After enjoying the view, retrace your way back to the trailhead.



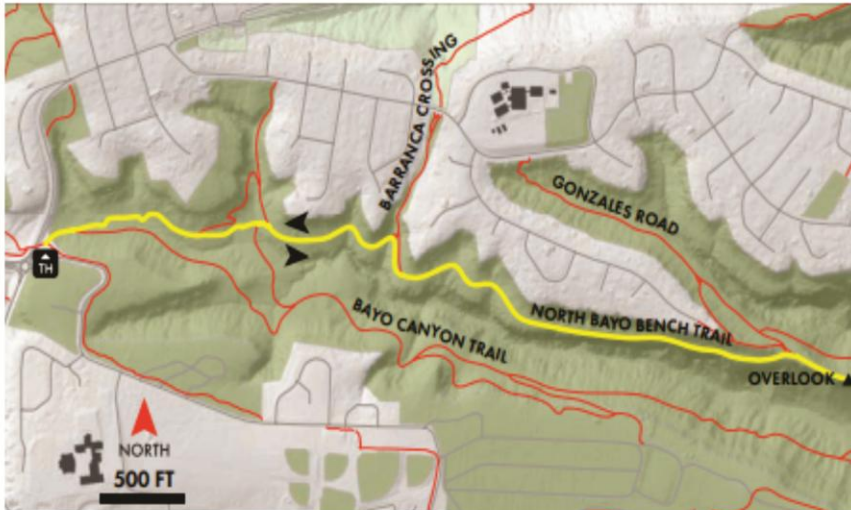
These Tasks are available  
and badly needed on the Bayo Canyon Trail

# Adopt-A-Trail Project: **Adopt by Trail**

## North Bayo Bench Trail



### Trail Assessment



Hike the length of the trail noting

1. overall condition
2. Trash
3. Problems with trail tread: rocks, roots, erosion, braiding, accessory trails, vegetation encroachment, down trees, etc
4. Report findings to Open Space Specialist

Equipment Needed

1. Trail Assessment Form

Training Required

1. Watch Trail Assessment video

How to do a Good  
Trail Assessment

**Adopt**

# One Day Adoption, Cont.

## Los Alamos County Adopt-a-Trail application One Day Adoption

Date

Name

Address

Phone Number

Email Address

Trail Name

Task

Proposed Date of Task

continue  
adoption

# One Day Adoption, Cont.

## Los Alamos County Adopt-a-Trail application One Day Adoption

Thanks for signing up for an Adopt-a-Trail one day adoption.

You will be contacted by a representative from Adopt-a-Trail via e-mail to confirm

1. trail
2. task
3. training, if applicable
4. equipment check out
5. check in and check out
6. release form

Questions: contact **[ProjectCoordinator@adoptatrailproject.com](mailto:ProjectCoordinator@adoptatrailproject.com)**

# Adopt-A-Trail Project: One Day Adoptions

**Adopt-A-Trail Project** One Day Adoptions are trail work projects designed to be completed in one day or less. You get to choose the project and the day you wish to do it. You may choose from a variety of projects. Either pick the trail you wish to work on or the trail task you wish to do.

Trail work will be rated by difficulty

Training necessary for each task will be described

Tools for each task will be supplied by the county

Check in and check out requirements will be outlined

Trail

Task

# Adopt-A-Trail Project: Adopt by Task

Trail Assessment

Retaining Wall

Trash Pickup

Erosion Control

PR

Structure repair

Brush Removal

Trail Tread Repair

Weed Abatement

Select a task and see which trails require this work

# Adopt-A-Trail Project: Adopt by Task

Trash Pickup

Woodland Trail

Zipline Trail

Bayo Canyon Trail

Blue Dot Trail

Camp Hamilton

Canada Del Buey

Kwage Mesa Trail

Los Alamos Mesa  
Trail

Mitchell Trial

North Bayo Bench  
Trail

North Pueblo Bench  
Trail

North Pueblo Trial

Olive Street Nature  
Trail

Red Dot Trail

River Trail

Satch Cowan Trail

Adopt a Trail for  
trash pickup

East Fork Trail

Fireline Trail

Gonzales Road

Pueblo Canyon  
Rim Trail

Walnut Canyon Trail

Walnut Canyon  
Rim Trail

White rock Canyon  
Rim Trail

# Adopt-A-Trail Project: Adopt by Task

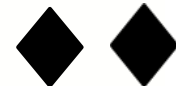
Trash Pickup

## Zipline Trail



1. Hike the length of the trail picking up trash
2. Equipment needed: Trash Bags, trash pickers, Gloves
3. Training required; watch picking up trash on Los Alamos Trails
4. Difficulty rating: Difficult. Steep Trail, Cliffs, long approach, extreme caution required

Picking up trash  
on Los Alamos Trails



**Adopt**

Search Site...

Search

Home / Initiatives **/Adopt-A-Trail Project**

## Adopt-A-Trail Project

The Los Alamos County Adopt-A-Trail Project provides a great opportunity for Trail Lovers to Watch Over, Maintain, and Protect the trails we love.

### Contact Us

Eric Peterson  
Open Space Specialist  
(505) 663-1776

Adopt-A-Trail Project offers three ways to adopt a trail, for info and sign up click on one of the links below:

**Organized  
Adoption**

**ONE DAY  
Adoption**

**Custom  
Adoption**

# Adopt-A-Trail Project: Custom Adoption

- Are you a passionate trail steward?
- Don't see any options you like, want to do more, have a great idea for a trail project?
- **Custom Adoptions** allow you to design your own project.
- **Custom Adoptions** are perfect for: Groups, Families, Community Service Projects, Individuals with big dreams
- **Custom Adoptions** must be designed and coordinated with, and approved by the Program Coordinator

For More info  
[Click here](#)



# Appreciation

- People like to be acknowledged
  1. Certificate of completion
  2. Media (papers, social media)
  3. Swag
  4. Apparel
  5. Partner with local businesses for discount coupons, adopt a trail promotions
  6. End of year Celebration



# Publicity

- We gotta get the word out!

- Social Media: Daily Post and Los Alamos Reporter, Facebook page, Los Alamos County Website, Sage Next door
- Printed Promotions: in Los Alamos County Trail Network guides and activity guides
- Flyers: in County Utility Bills
- Local Group Presentations: Boy Scouts, Girl Scouts, Kiwanis, Rotary, Road Runners, Senior Center, Church Youth Groups, Family YMCA, Tuff Riders, Los Alamos Mountaineer Club, High and Middle School Clubs, PEEC, Los Alamos Juvenile Justice advisory Board

- Booths at LA County Events: Science Days, Craft Fairs, Concerts, Farmers' Market
- Floats: in local Parades
- Banners: on the Diamond Drive Overpass
- Bumper Stickers, Stickers, Patches



# To Do List:

## **Obtain necessary approvals**

- Parks and Recreation Board
- Los Alamos County Parks Division
- County Council

## **Develop a Budget:**

1. Program Coordinator
2. Trail Assessment app
3. Web site costs
4. Swag
5. Publicity
6. Equipment

## **Develop a Trail Reporting App for LA County**

## **Generate a Trail Work Plan**

- List of Trails and Tasks
- Develop difficulty ratings for each adoption
- Training programs for each Task (printed, video, training session)
- Equipment lists for each task
- Safety equipment for each task
- Logistics: check in , check out, equipment pick up and drop off, trail status reporting system,
- Work completion/inspection system

# To Do list, continued:

## Develop Web Site

1. Sign up forms
2. Equipment check out forms
3. Reporting forms
4. Waivers
5. Adoption requirements
6. Training links
7. Seamless system of syncing with Program Coordinator
8. Develop system of tracking Adopters

## Publicity



# And Finally,



**Never Underestimate the Power of Volunteers!**

The image shows a wide-angle view of a desert canyon. In the foreground, there are large, reddish-brown rock formations with some small green plants growing on them. A dirt path or trail leads down the slope. The middle ground is filled with a dense forest of green trees and shrubs. In the background, there are more rocky cliffs and a clear blue sky with scattered white clouds. The overall scene is bright and sunny.

# **Adopt-A-Trail Project, Los Alamos**

## **Volunteer, if you love trails**