

# ROAD & TRAFFIC SAFETY DISCUSSION

Incorporated County of Los Alamos

Police Chief, Dino Sgambellone &  
Public Works Director, Juan Rael

Los Alamos County Council  
Work Session

October 22, 2024

# Supports Council Goals

- Quality of Life
  - Mobility
  - Public Safety



# Existing LAPD Strategies

Existing strategies combine enforcement, education, and prevention.

- Enforcement activities including traffic citations and warnings, DUI checkpoints, traffic safety operations.
- Educational outreach through press releases, website development, annual report data, public discussion/presentation.
- Preventative engagement to include programmatic initiatives, community partnerships, County department collaborations, and CodeRed alerts.

# Potential Enhancements to Traffic Safety Strategies

Automated Speed Enforcement is a potential strategy designed to reduce serious accidents and fatalities through a reduction in overall speed.

- Evidence-based
- ABQ is seeing 80% reduction in incidents of dangerous speeding
- Infrastructure required

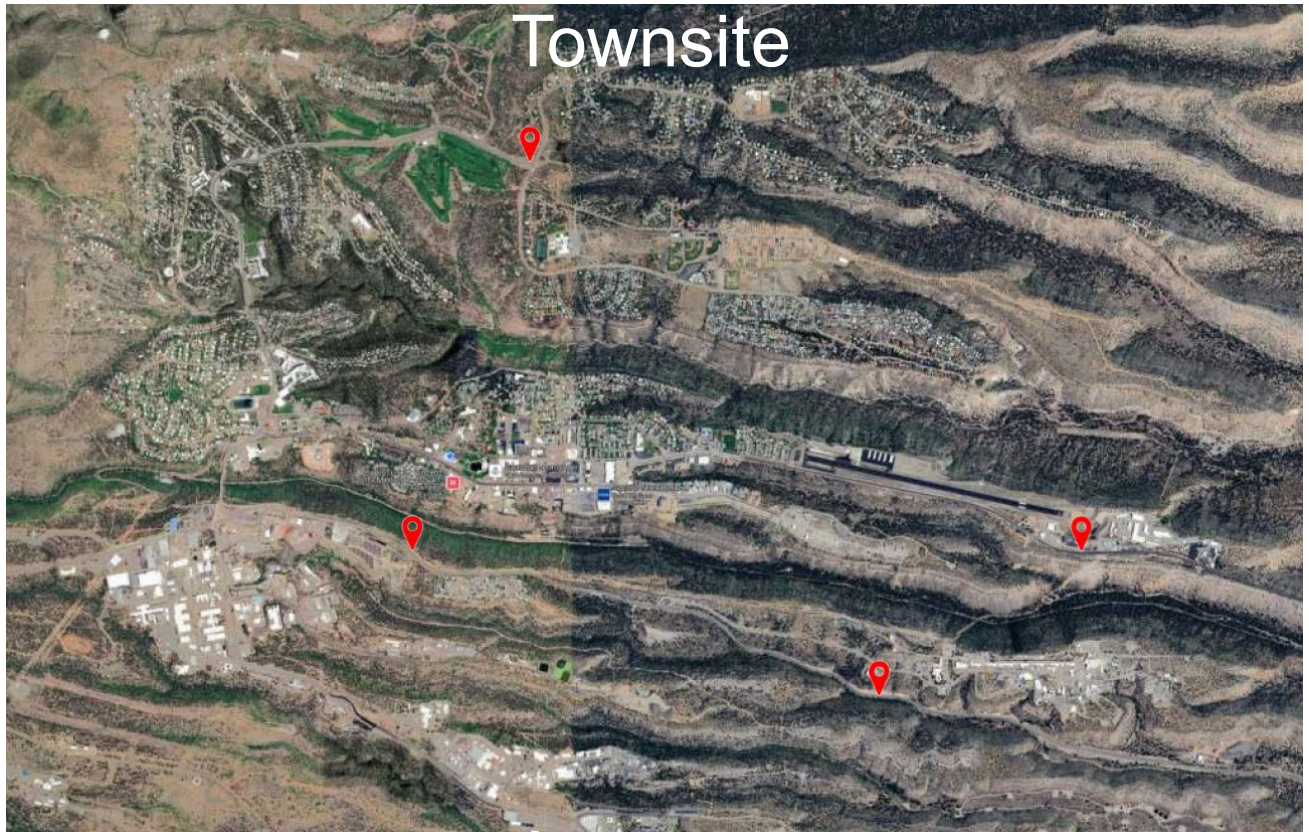
A local Ordinance banning the use of handheld phones while driving is a potential strategy to impact traffic safety.

- Many studies have shown the use of a cell phone while driving increases the risk of accident
- Many times, it is hard to know the “why”

## Safety Statistics

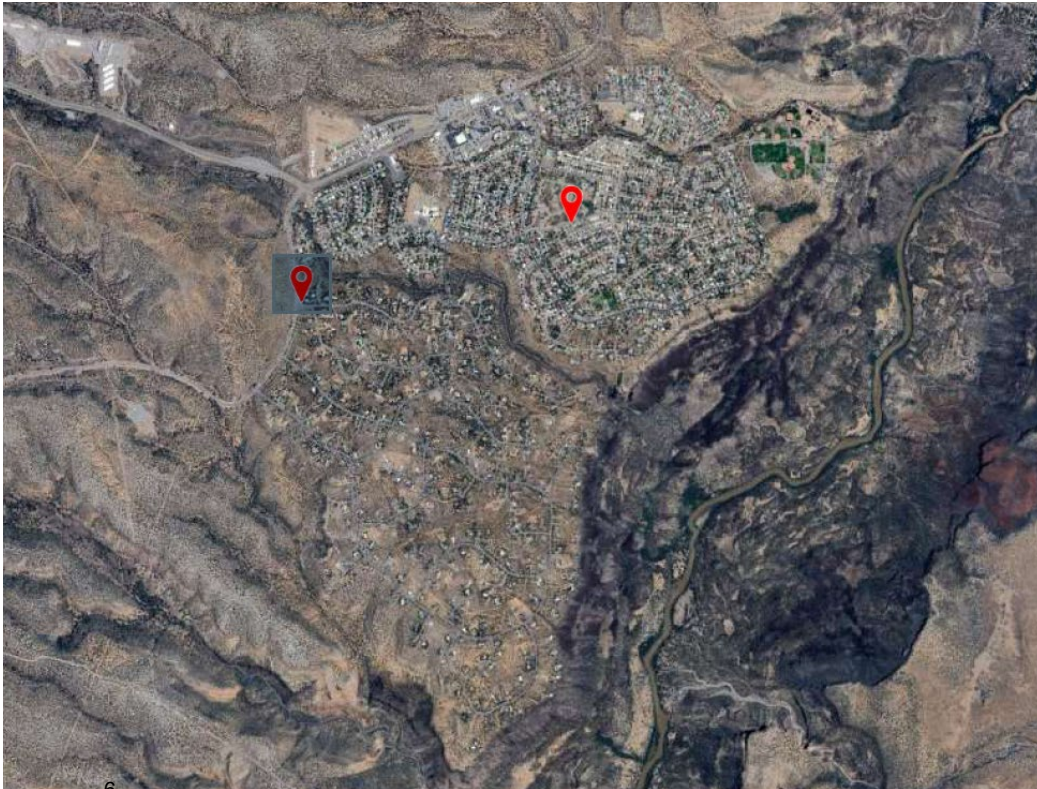
- 6 fatal accidents in County since December 2016
- 62 vehicle versus wildlife in 2023; 48 in 2024 through September

# Fatal Crash Locations – Last 8 Years



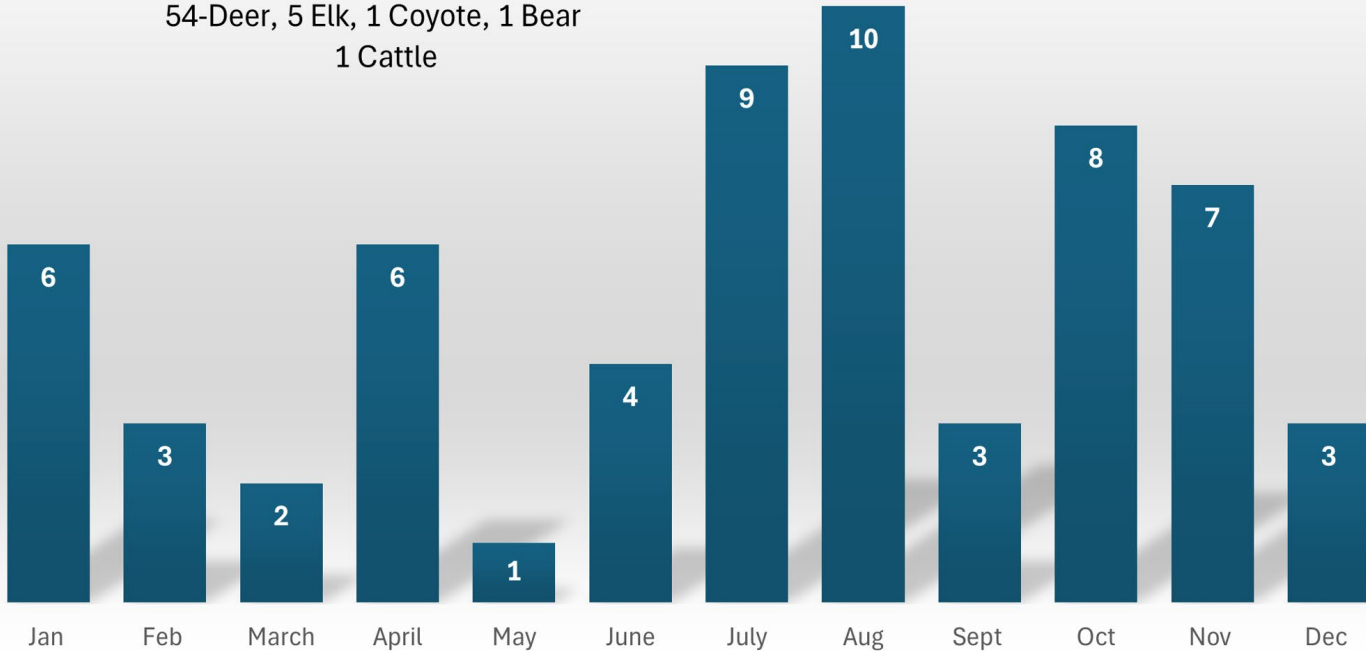
# Fatal Crash Map – Last 8 Years

## White Rock



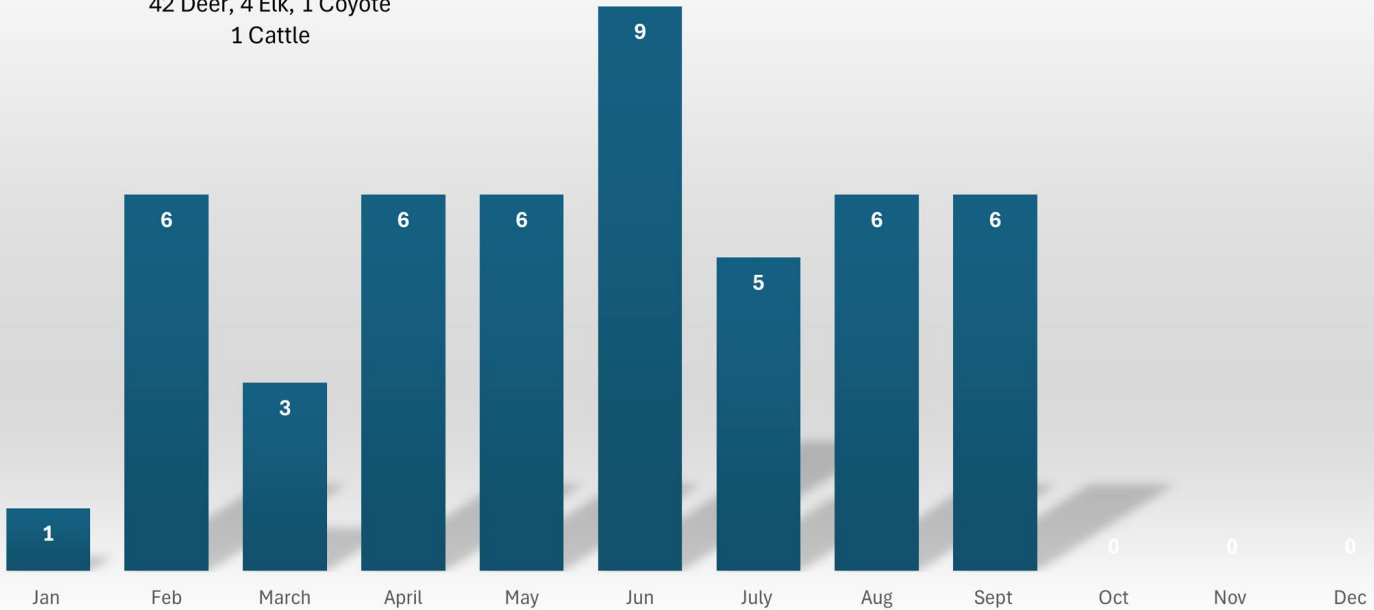
# Large Game Animals Hit by Car 2023

593 - Total accidents  
62- Involving wildlife:  
54-Deer, 5 Elk, 1 Coyote, 1 Bear  
1 Cattle



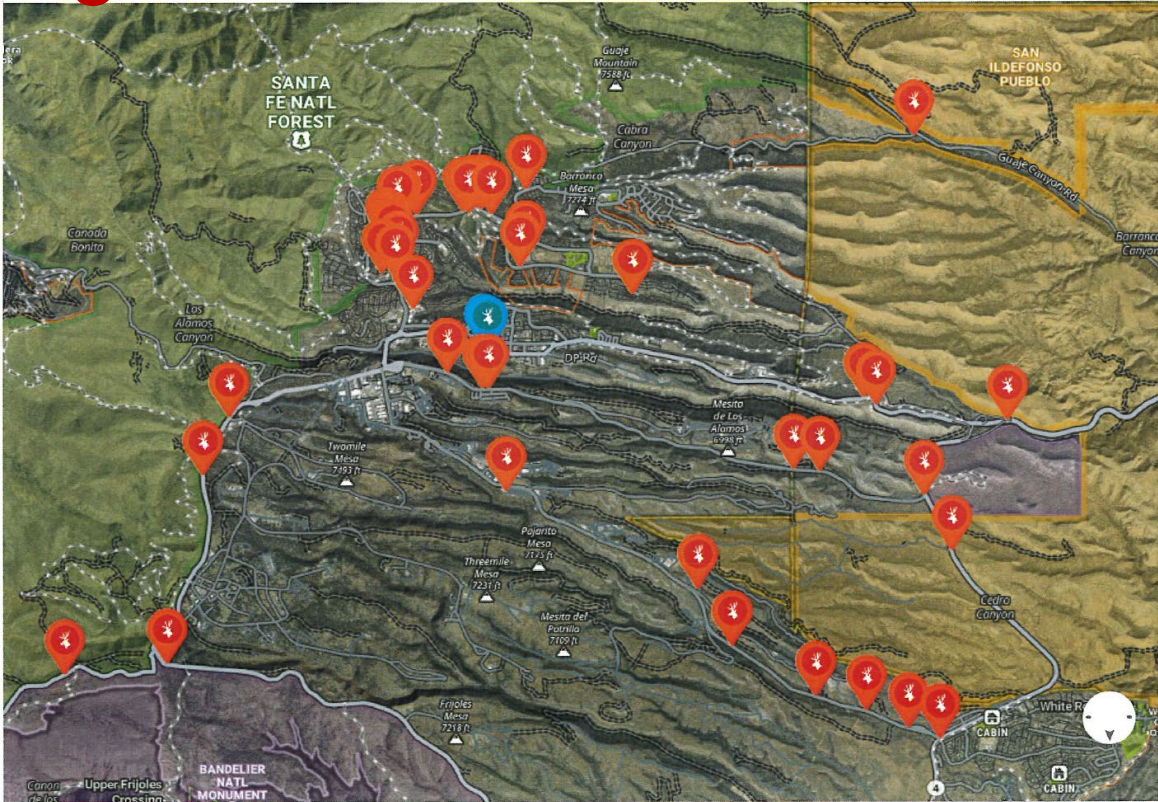
# Large Game Animals Hit by Car 2024

483-Total accidents  
48- Involving wildlife  
42 Deer, 4 Elk, 1 Coyote  
1 Cattle

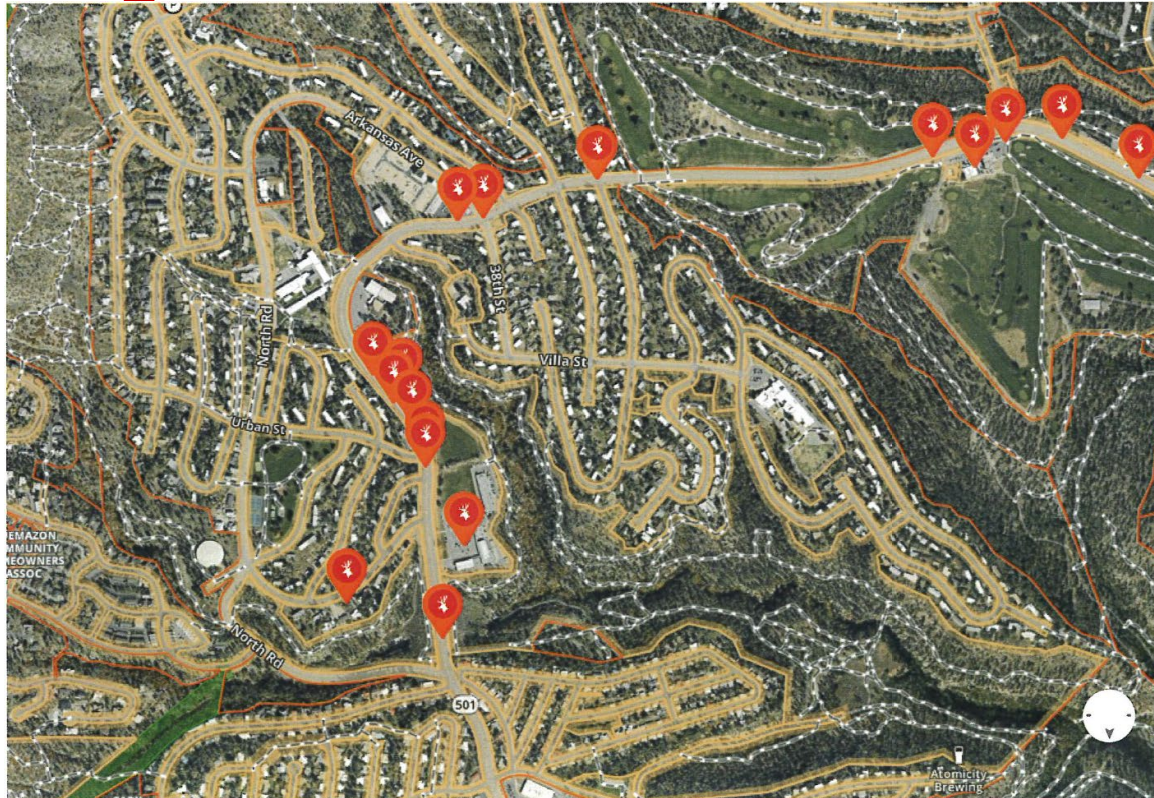




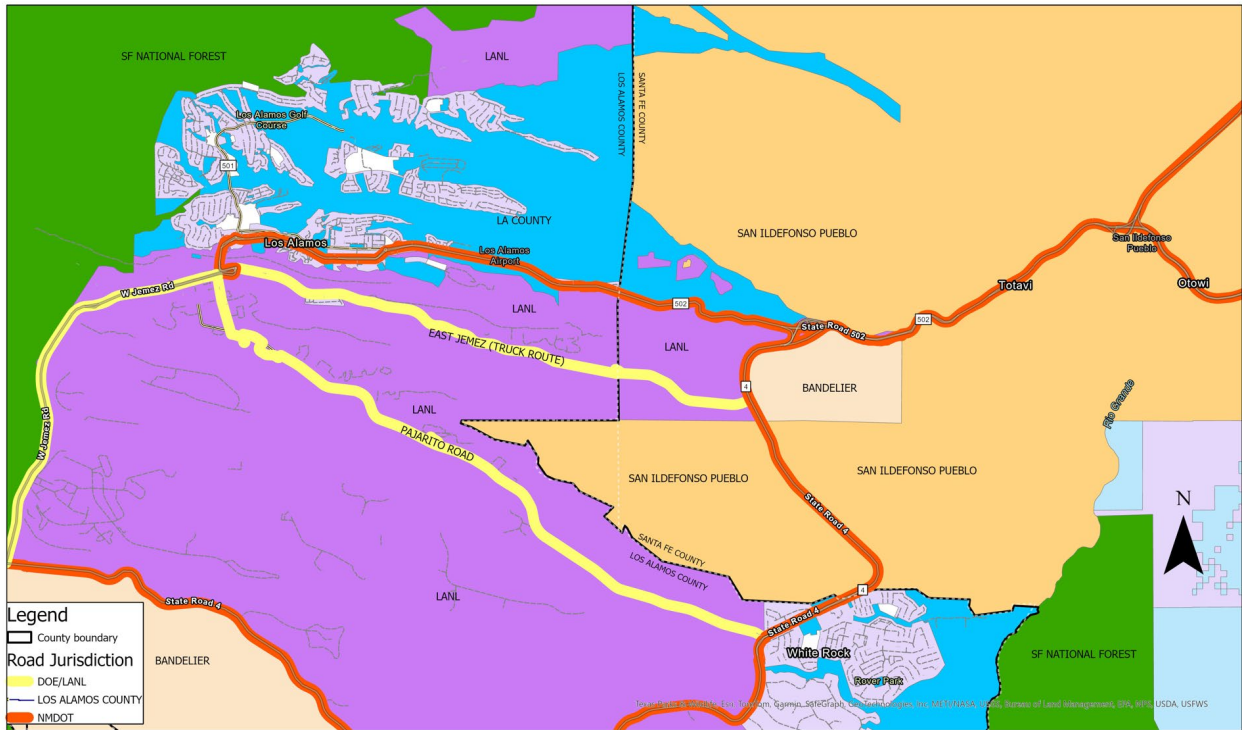
# Large Animal/Vehicle Crash Map



# Large Animal/Vehicle Crash Map



# Jurisdictional Boundaries



REGIONAL LAND STATUS MAP

# Coordination

## NMDOT: Recent Discussions

### Partnership-Driven Solutions

- Emphasizing the importance of collaborative efforts

### Regional Collaboration

#### Key Stakeholders

- Los Alamos National Laboratory (LANL)
- New Mexico Department of Transportation (NMDOT)
- San Ildefonso Pueblo
- Santa Fe County
- New Mexico Department of Game and Fish (NMDGF)

### Standards-Based Approach

- Commitment to evaluations aligned with national engineering standards



# Recommended Next Steps

## Return to Council for Consideration of New Local Ordinances

- Speed Camera
- Cell phone use in County

## Evaluating the Feasibility of Immediate Improvements:

- Rumble Strips on NM 502 (LAC/NMDOT)
- Review of NM 502 Speed Limits (LAC/NMDOT)

## Public Involvement

- Engaging in coordination efforts with:
  - Residents and Commuters (Townhall and Survey)
  - Los Alamos National Laboratory (LANL)
  - New Mexico Department of Transportation (NMDOT)
  - San Ildefonso Pueblo
  - Santa Fe County

## Funding Opportunities

- Develop budget options for consideration during Council Budget Hearings (April 2025)



# Questions?

