

NM 502 Trinity Drive Design Update

Incorporated County of Los Alamos

Public Works Department – Justin Gibson, PE
Wilson & Company – Conrad Ley, PE

March 6, 2025



NM 502 Trinity Drive Study

Study Limits

- Study Limits: NM 502 (Trinity Drive) from Oppenheimer Drive to Knecht Street
- Length: approx. 0.55 miles
- Posted Speed Limit: 35 mph
- Roadway Classification: Principal Arterial



NM 502 Trinity Drive Project

Project Background

- Los Alamos County received \$4.25M in Highway Safety Improvement Program (HSIP) funding from the NMDOT based on a 2016 Road Safety Audit
- Wilson was contracted in 2021 to complete a study complete that analyzed the existing conditions, developed alternatives for improvements along the corridor and identified the recommended alternative for NM 502 (Trinity Drive)
- Council passed resolution 24-29 in support for hybrid road diet 2 alternative on Sept. 13, 2024
- Project submitted 60% plans for review and comment from County staff and stakeholders in January 2025.

NM 502 Trinity Drive Project

Schedule

- A public meeting at regularly scheduled Transportation Board Meeting on March 6, 2025
- 60% Plan submitted Jan. 2025
- 90% Plan submittal March 2025
- Grant milestone deadline – Final design in May 2025
 - HSIP funding \$4.25 million
- Project bidding for construction – June 2025
- Project award – September 2025
- Construction – Spring 2026 (anticipated)

Hybrid Road Diet 2 Typical Section

- Includes: one lane in the westbound direction, and two lanes in the eastbound direction with a two-way left-turn lane (TWLTL), bike lanes, 5-ft sidewalk, and standard curb and gutter.
- An 8'-10' wide multi-use path is proposed along Ashley Pond



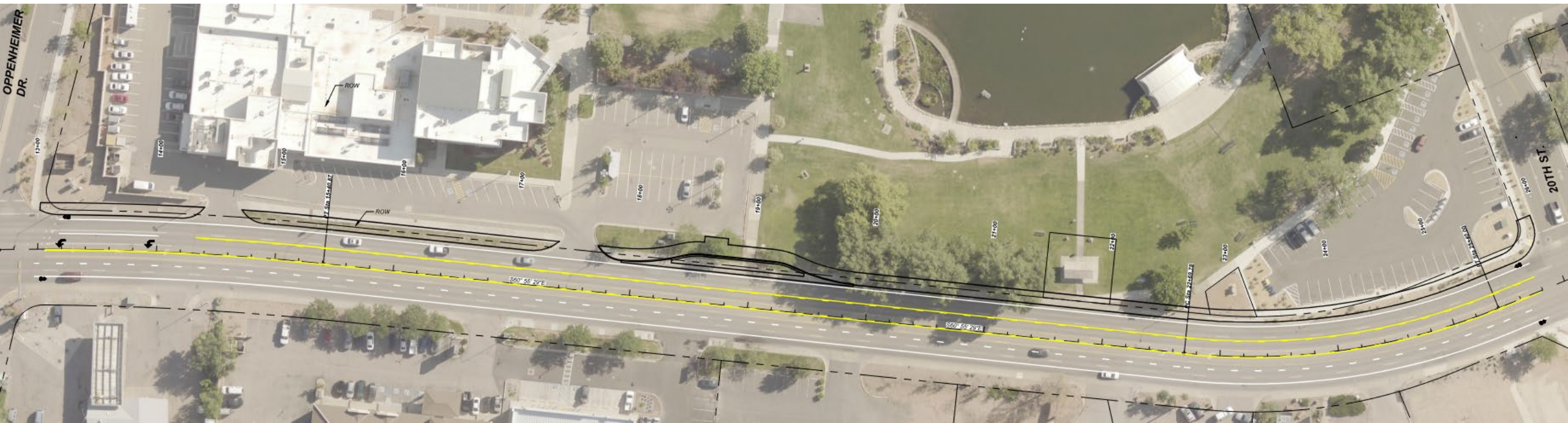
Access Management

- Will review access points along NM 502 during design
 - Limit impact to business circulation and operations
- Will engage business owners throughout design
- Access management changes will require NMDOT coordination and approval



Ashley Pond Multi-use Path

- 10' Multiuse path: 20th Street to Oppenheimer Drive
- Potential bus pullout: NMDOT Park-and-Ride Layover (northside) and Atomic City Transit Stop (southside)



Ashley Pond Barriers



20th St. Intersection Treatment

- Ongoing coordination with developer for intersection options
- Rectangular Rapid Flashing Beacon (RRFB)
- High-Intensity Activated CrossWalk (HAWK)
- Singal
 - Based on warrants and need to provide documentation to NMDOT for pedestrians / vehicles



Utility Improvements

- Water line replacement from Oppenheimer to 20th St.
- Selective gas line replacements within corridor.



Questions?

