

Los Alamos County Fleet Conversion Plan and Community-Wide EV Charging Plan

Project Kick-Off Meeting





Agenda

1. Project purpose
2. EV fleet conversion plan
3. EV charging plan
4. Engagement strategy
5. Deliverables and timeline

ATTACHMENT A

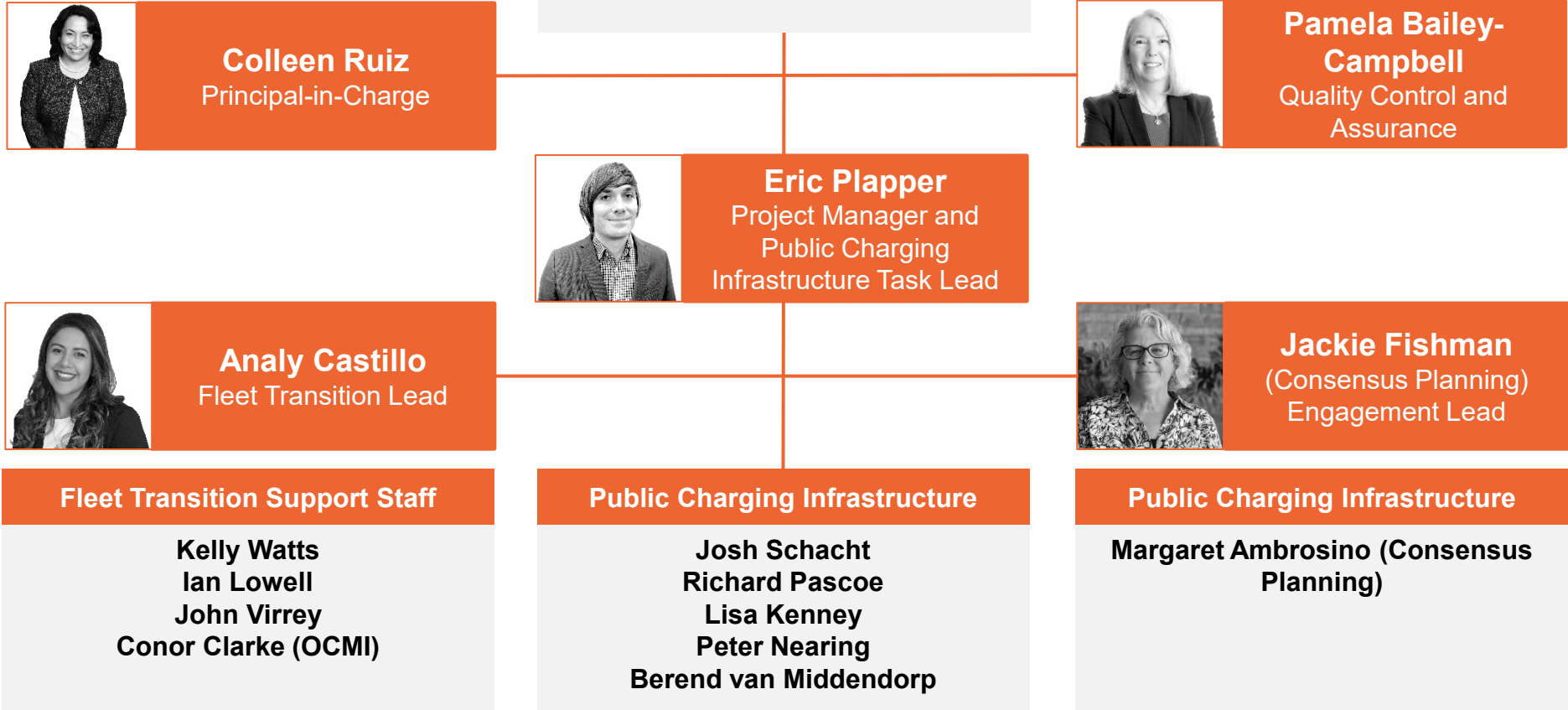


Project Purpose

1. Reduce greenhouse gas (GHG) emissions from the County fleet
2. Expand EV charging infrastructure
3. Engage County partners



Project Team





Fleet and Facilities Existing Conditions

Industry Review

- Vehicles
- Technologies
- Manufacturers
- Charging and fueling equipment

Site visits

- Current fleet
- Vehicle and equipment replacement policies
- Facilities overview
- Site capacity
- Space constraints
- Charger locations
- Utility services

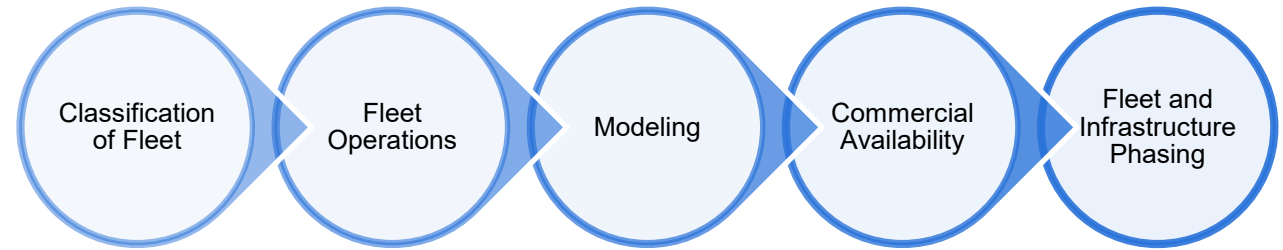


ATTACHMENT A



County Fleet Conversion Plan

- Vehicle performance and power modeling
 - Identify energy requirements and expected operational range
- Vehicle replacement schedule & rightsizing
- Facility assessment and infrastructure upgrades
- GHG emissions analysis
- Financial analysis
- **Task deliverable:** County Fleet Conversion Plan

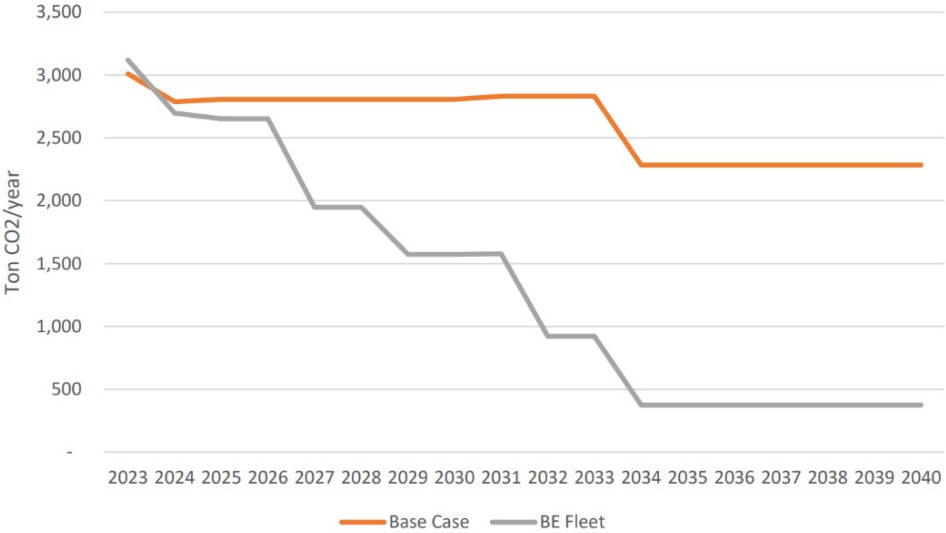




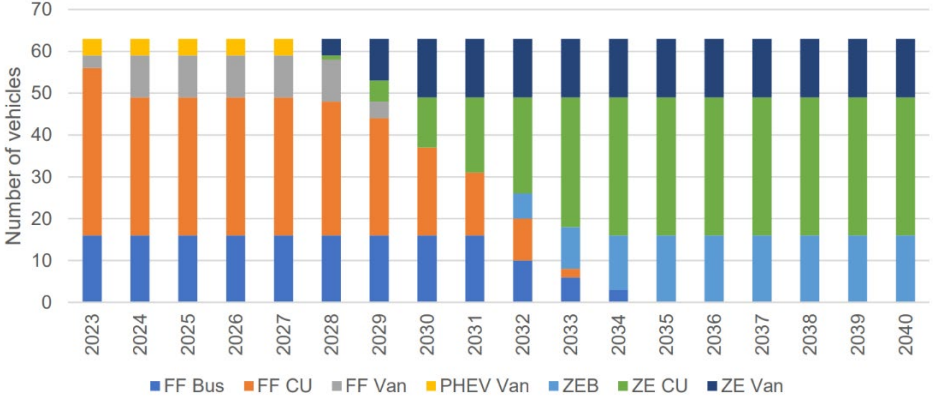
County Fleet Conversion Plan

Quantitative analysis of the fleet will inform the budget, timeline, and approach to EV conversion.

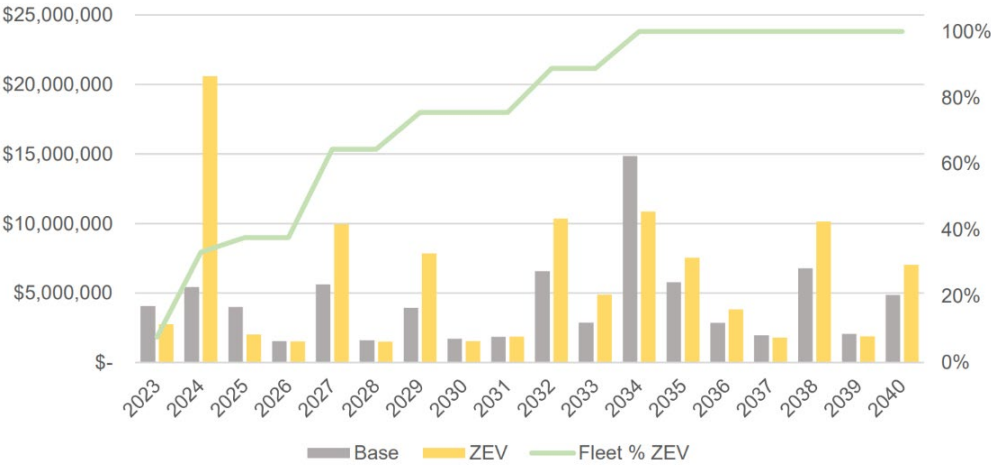
Example GHG Emissions Over Transition Timeline



Example Fleet Composition of Transition Timeline

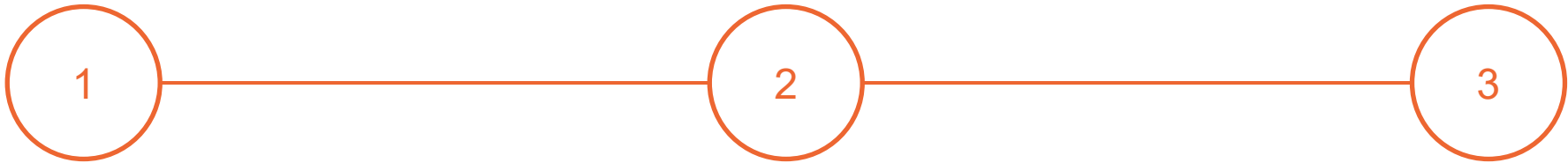


Financial Analysis Example





Community-Wide EV Charging Plan



Contextual Scan and Assessment:

- Relevant local plans
- Permitting, code, and zoning assessment

Deliverable: Contextual Scan and Assessment Technical Memo

Technical Analysis:

- Demand projection
- Suitability analysis
- Equity in the mapping process

Deliverable: Integrated Mapping Analysis Technical Memo

Implementation Plan:

- Business model assessment
- Public infrastructure costs and return on investment

Deliverables: Public Charging Infrastructure Readiness Plan



Relevant Local Plans

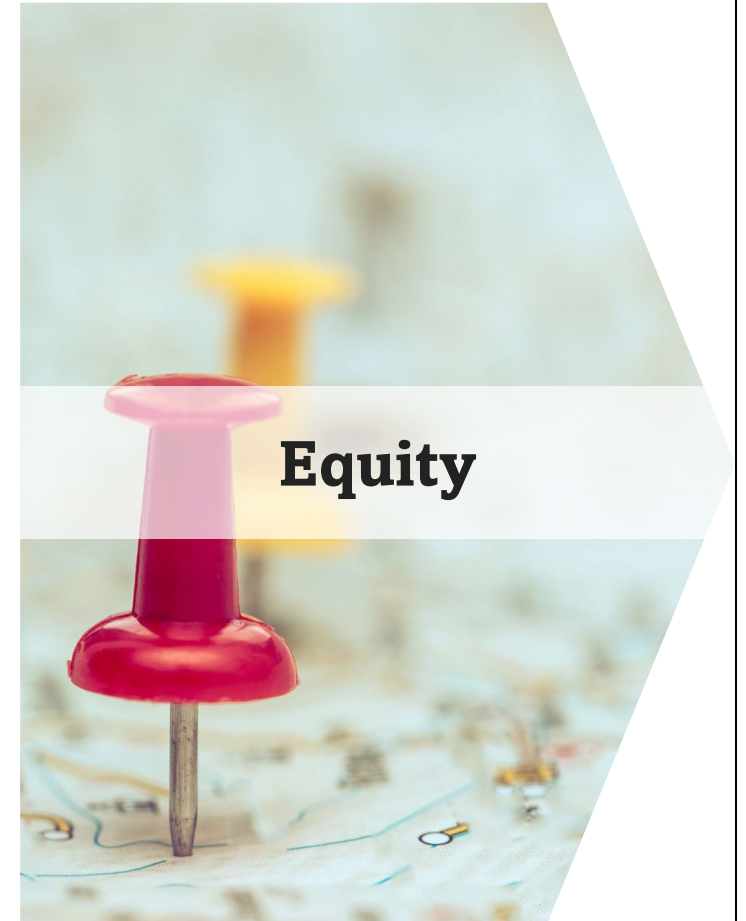
- Los Alamos County Climate Action Plan
- LAC Department of Public Utility Integrated Resource Plan
- New Mexico Clean Car Rule
- New Mexico Priority Climate Action Plan
- NMDOT New Mexico 2045 Plan
- New Mexico EV Infrastructure Deployment Plan
- Northern Pueblos Regional Transportation Plan
- LAC Code of Ordinances
- County Comprehensive Plan
- Procurement Policy



ATTACHMENT A



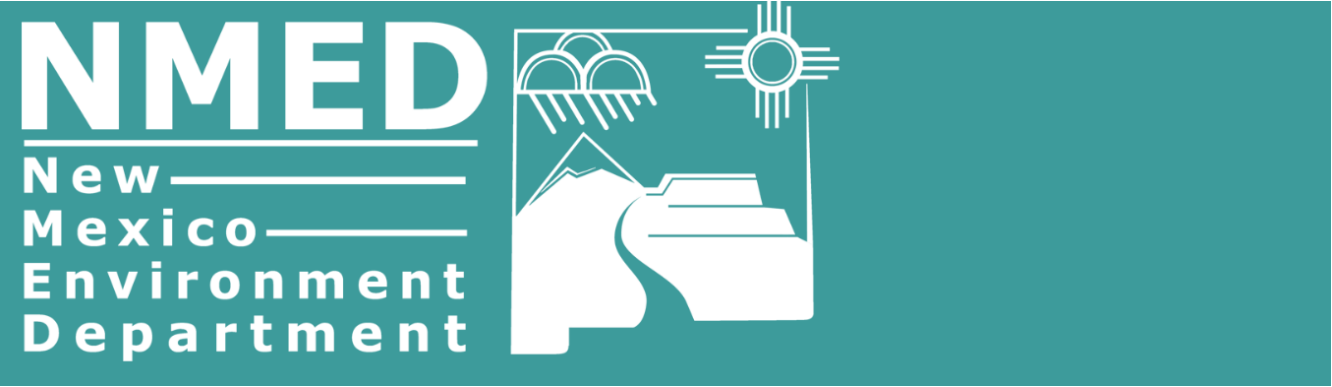
What are we looking for in an ideal charging network?



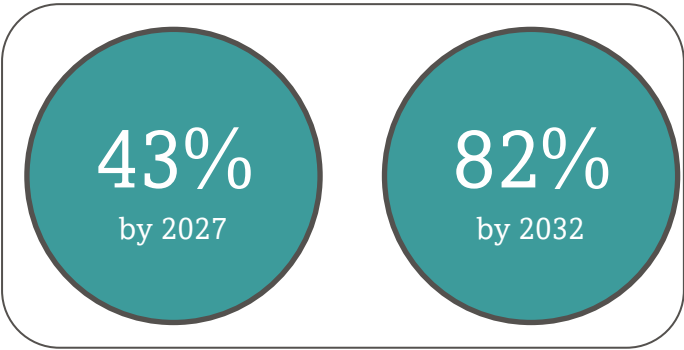


New Mexico Clean Car Rule

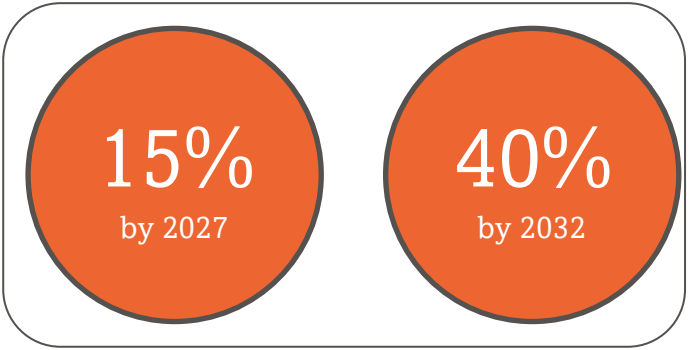
The New Mexico Clean Car Rule sets low-emission and zero-emission standards for new cars and trucks sold in the state, starting in 2026.



Light Duty Vehicles



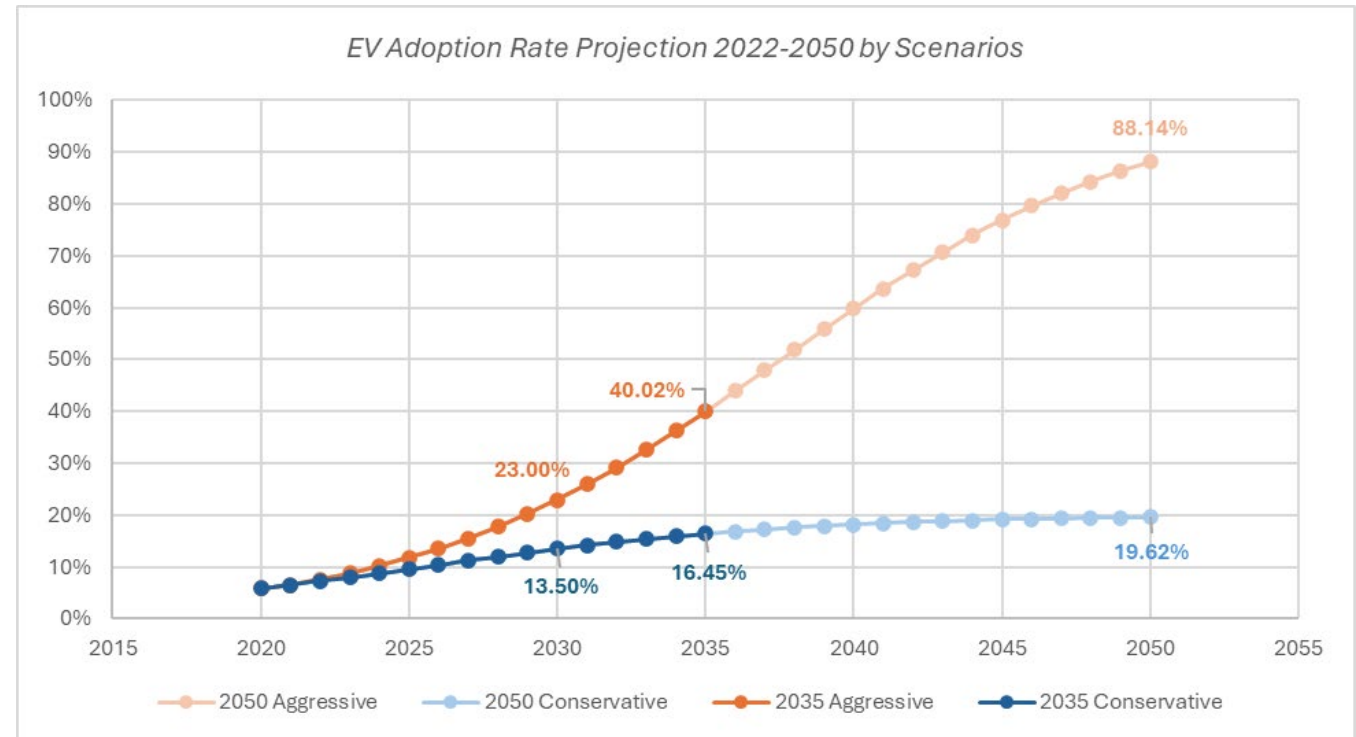
Trucks

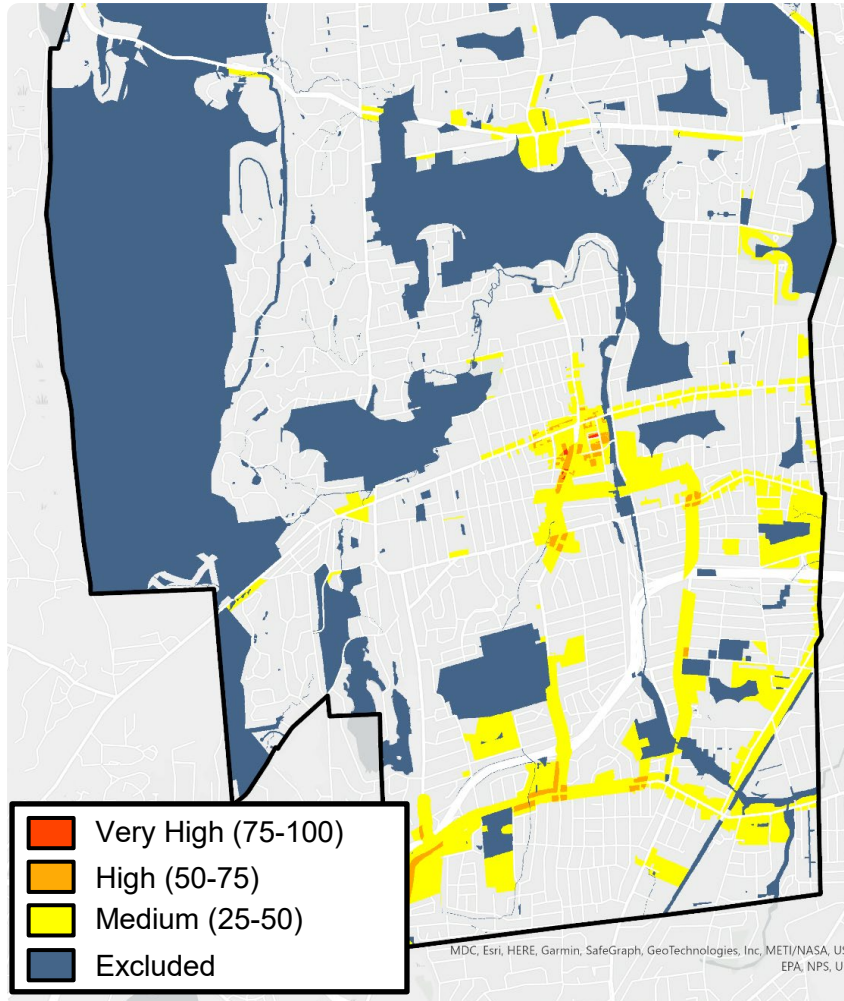




Estimating Local Adoption and Charger Needs

- Current registration
- Recent growth in registration
- Alignment with global and national trends
- Developing scenarios

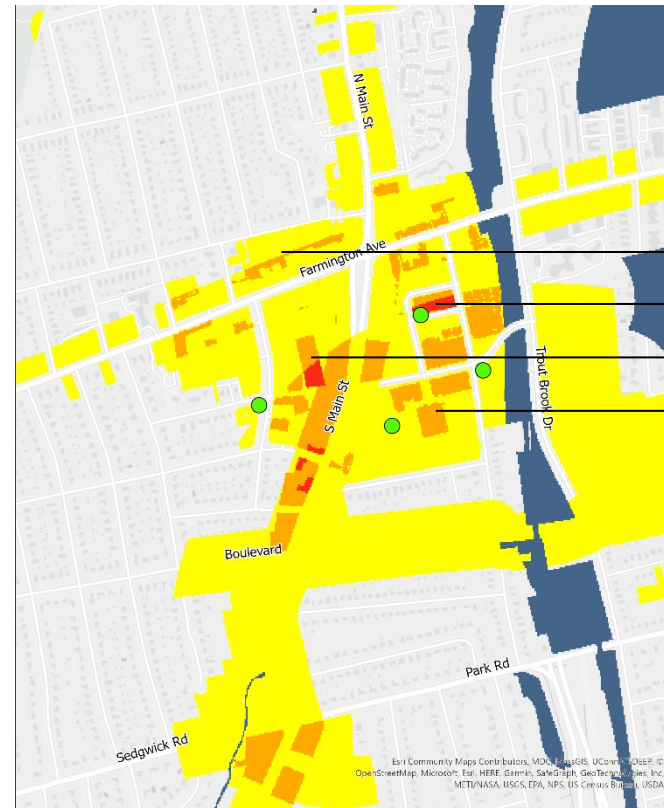




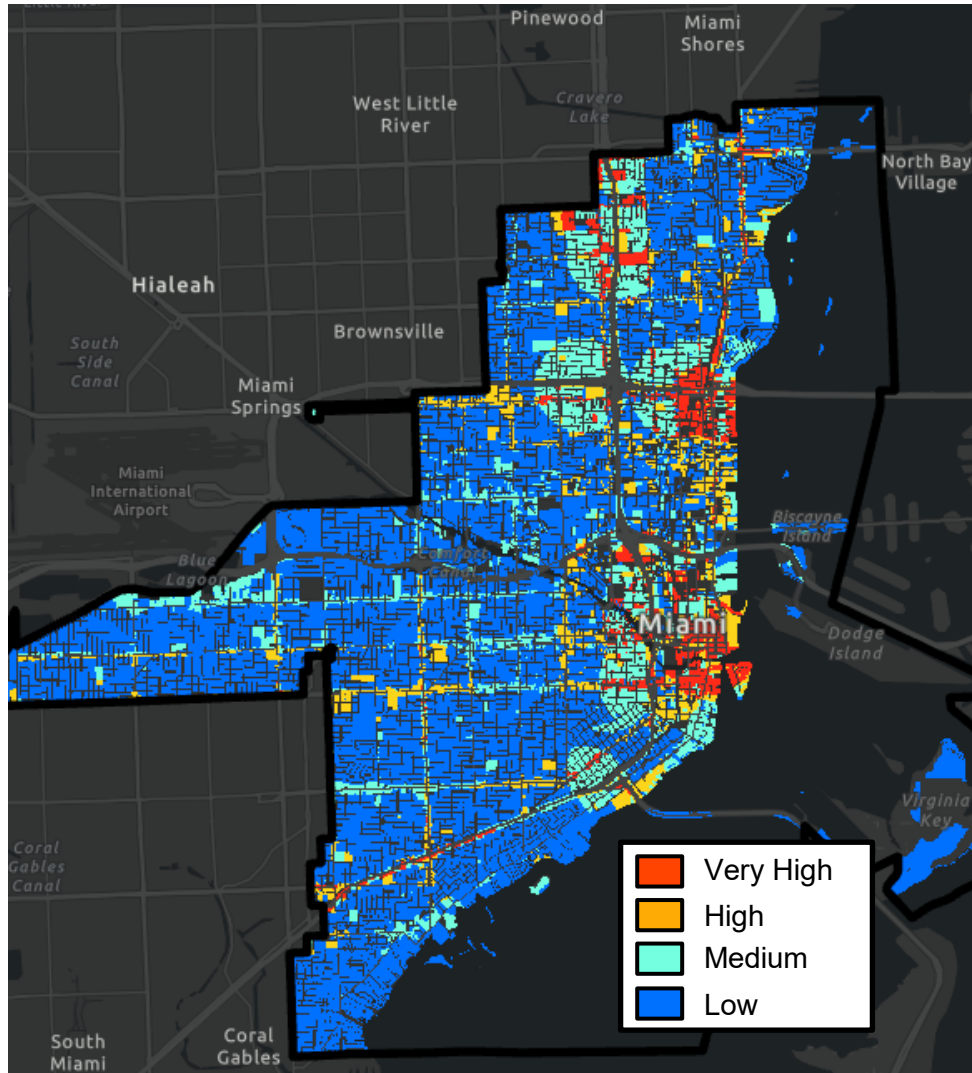
West Hartford, CT Public Charging Infrastructure Suitability Analysis

Example Outputs

West Hartford, CT Site Selection



- Brace Road Lot
- Isham Garage
- Town Center Garage
- Memorial Garage



**Miami, FL Public Charging
Infrastructure Suitability Analysis**

Outputs: Miami

Scenario Planning:

- Base case
- Underserved communities
- Corridor charging
- Commercial opportunities
- City-owned property



Public and Partner Engagement

Partner and Partner Engagement Plan:

- Partner registry
- Public engagement strategy
- Opportunities to leverage industry organizations

Partner Advisory Meetings:

- Virtual kick-off meeting with County Council
- Virtual presentation of draft fleet and public charging infrastructure plans to County Council, Environmental Sustainability Board, and Board of Public Utilities (one each)
- Virtual presentation of final deliverables to the entities above (one each)

Public Engagement:

- Leverage existing community-based organizations
- Administer statistically valid survey
- EV fact sheet
- One in-person community meeting
- One online community meeting
- Public and Partner Engagement Summary Technical Memorandum
- Opportunity to review and comment on final deliverables



Project Deliverables



Los Alamos EV Readiness Plan

Fleet Conversion Plan

Vehicle performance and power modeling

Vehicle replacement schedule

GHG emissions analysis

Facility assessment and infrastructure upgrades

Financial analysis

County fleet conversion plan

EV Charging Plan

Local plan review

Permitting, code, and zoning assessment

Demand projection

Suitability analysis

Equity in the mapping process

Integrated mapping analysis technical memo

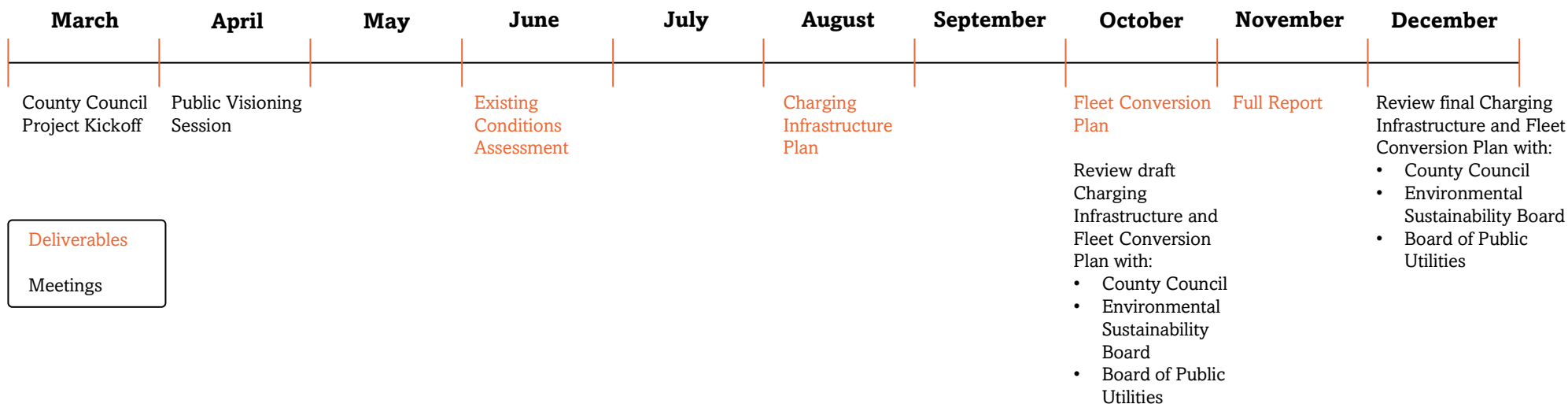
Business model assessment

Public infrastructure costs & ROI assessment

Public charging infrastructure final plan



Project Timeline





Next Steps



Community visioning session with the public



Fleet and facilities existing conditions assessment



Review of relevant plans and policies



Community-wide demand, suitability, and equity analysis

Questions
