

FY 24 Community Services Department

Year-End Report to Parks & Recreation Board









This is what we are building



=



CSD follows a very intentional & thoughtful Blueprint

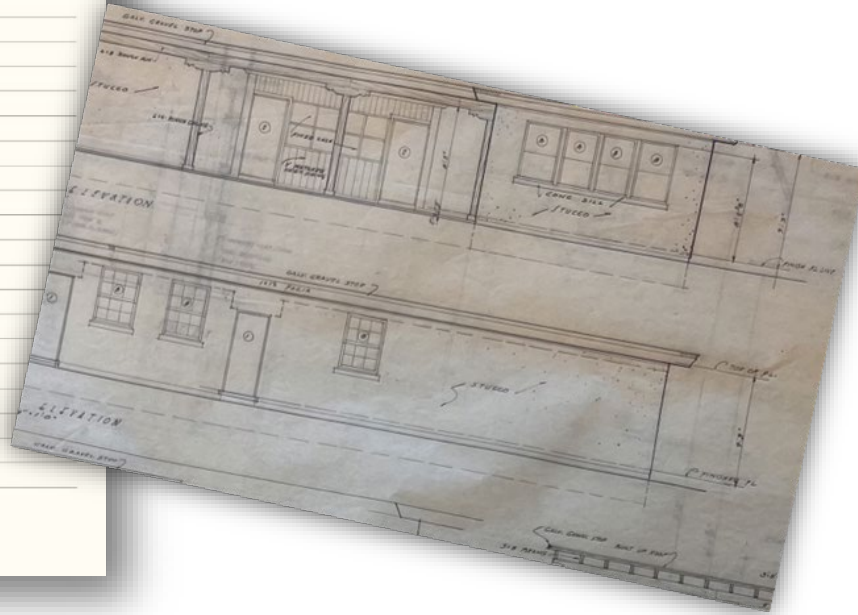


CSD INTEGRATED MASTER PLAN
Developed by CSD
with the help of
external experts &
community input

We have our CRITICAL PATH

STRATEGIC BUSINESS ACTION PLAN

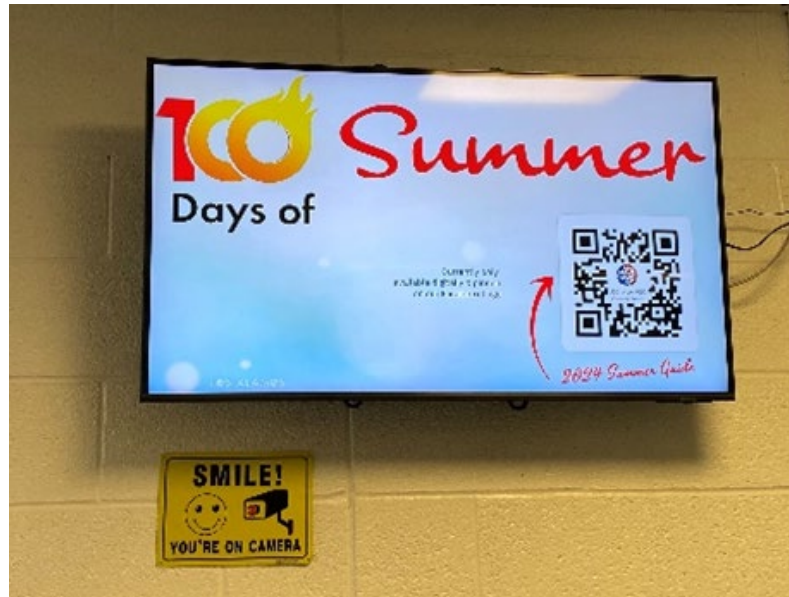
aka “CSD ROAD MAP”

[illegible]

Quality Governance - Communication & Engagement



Continue to evaluate and look for other venues and media to dispense information to the community



100 DAYS OF Winter



LOS ALAMOS
where discoveries are made

Community Resources | Community Restaurants

LOS ALAMOS & WHITE ROCK FOOD & BEVERAGE

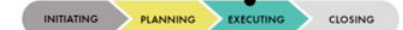


Canyon Median Design



Staff is working with a contractor to redesign the Canyon Road medians to provide a better look, reduce water usage, and minimize pesticide use. The location is an extremely challenging due to the snow operations and heat of summer. Staff has made presentations to the Transportation Advisory Board and the Parks and Recreation Advisory Board for additional input.

White Rock Skate Park



Staff is working with a contractor to collect public feedback and replace the elements at the White Rock Skate Park with new elements. Public input started with an open survey that was completed by over 90 skaters, and was the foundation for the final design. We are looking for...

Community Resources | Community Organizations

More than 400 Organizations are in our Busy Little Community!
It's easy to get plugged in and involved with activities that suit your lifestyle! Below is a list of just a few to help get you started. Pick up a new sport, join a social group of active residents, learn a new hobby, or sign up for a class. You will never be bored in Los Alamos County if you...

...Discover LA Today!



As a recommendation from the 2023 Integrated Master Plan the County is reviewing, combining, and updating several trail and open space documents into a single guiding 'Trail and Open Space'...

Kinnikinnik Park Accessible Trail



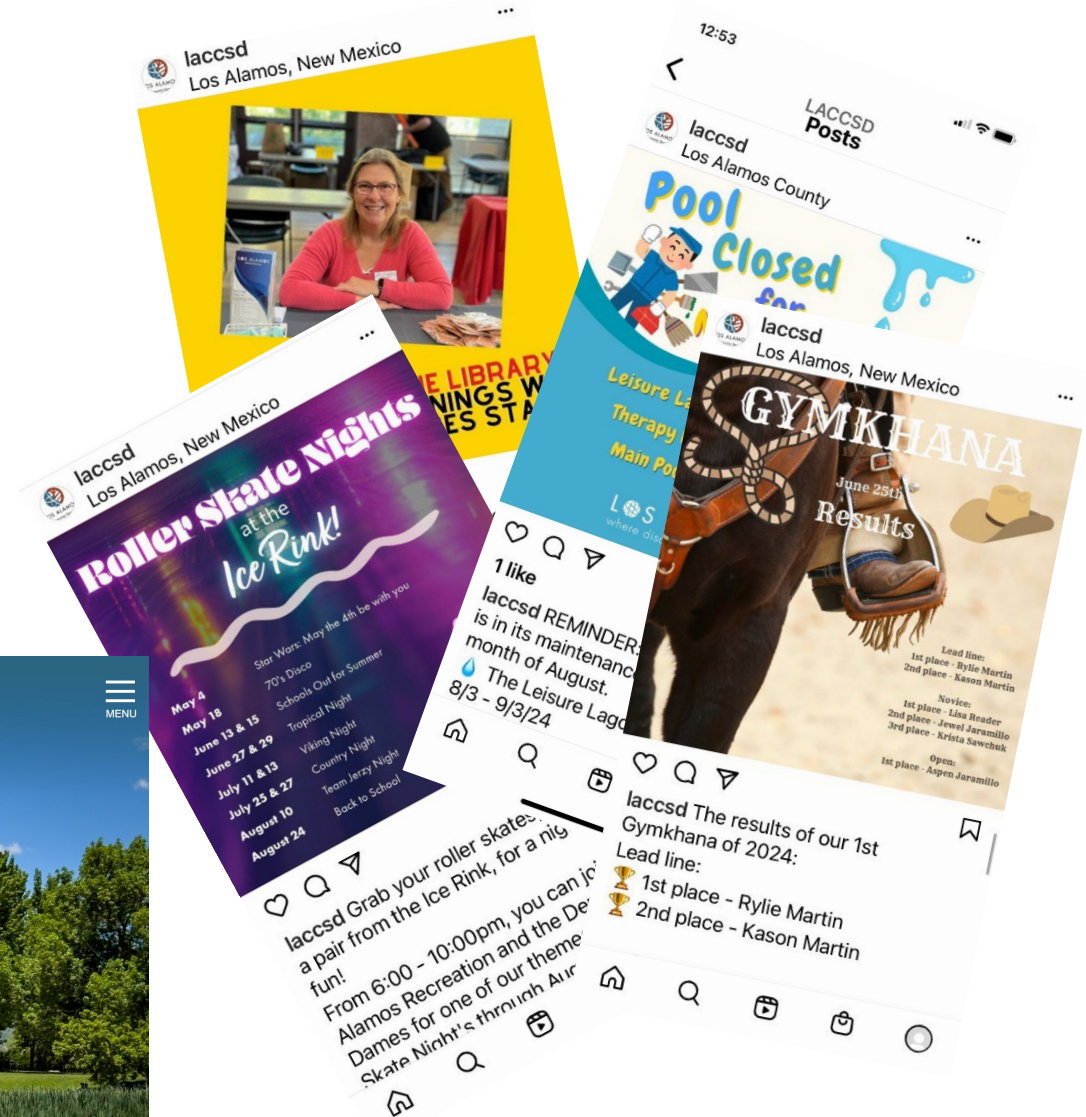
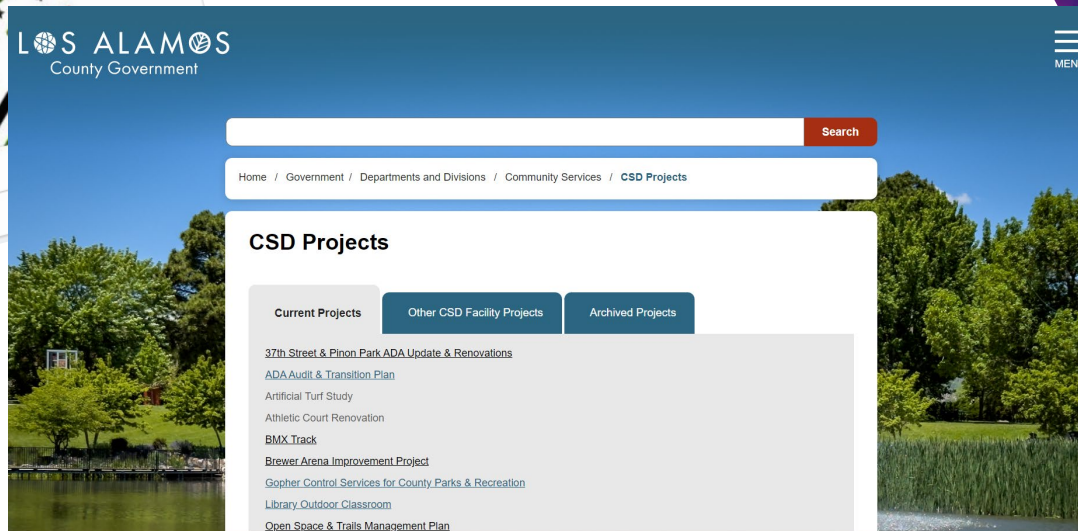
...was awarded on April 22, 2024. The fields were scheduled to be completed this summer. Staff is already looking at phase two of the field renovation for next year.



Quality Governance- Communication & Engagement



**Update
website and
social media
regularly.**





Operational Excellence- Effective, Efficient, and Reliable Services



Evaluation of best practices for the Department Against the Commission For Accreditation of Parks and Recreation Agencies (CAPRA).



154 Standards- 100% Met



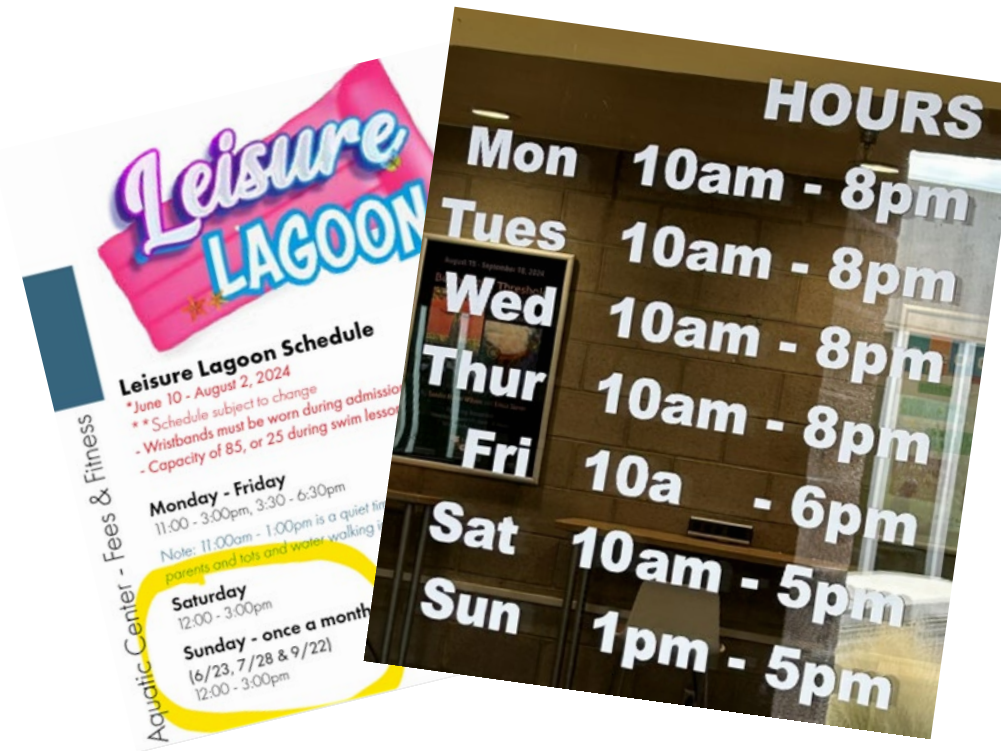
Operational Excellence- Effective, Efficient, and Reliable Services



Develop a continuous improvement mindset for our community.



Library Mentor/Buddy Program



Expanded Hours



4 Staff Certified Park &
Recreation Professionals



Operational Excellence- Effective, Efficient, and Reliable Services



Review and update administrative rules and regulations.



Part of the CAPRA Process



Operational Excellence- Effective, Efficient, and Reliable Services

**Continue to Look for Innovative Ways to
Recruit and Retain Staff Across the
Department.**

LOS ALAMOS
Recreation

WE ARE HIRING

JOB POSITIONS :

- RECREATION LEADER
- LIFEGUARDS
- PROGRAM SPECIALIST
- AQUATICS MAINTENANCE

APPLY TODAY

 [TINYURL.COM/LOSALAMOSCOUNTYJOBS](https://tinyurl.com/losalamoscountyjobs)





Operational Excellence- Effective, Efficient, and Reliable Services



Purchase and Implementation of Asset Management Software.

Cartegraph
ASSET MANAGEMENT





Operational Excellence- Infrastructure Asset Management



Update Amenities: 37th Street Tot Lot and Pinon Park Playground



- PLAY EQUIPMENT AND EXISTING AMENITIES LEGEND**
- 1. EXISTING PAVILION STRUCTURE
 - 2. EXISTING DRIVE PAVILION
 - 3. ACCESSIBLE ASPHALT TRAIL AND MAINTENANCE ACCESS
 - 4. TREE PLANTER
 - 5. EXISTING RESTROOM
 - 6. NEW WATER FOUNTAIN
 - 7. BENCH
 - 8. ACCESSIBLE PATH
 - 9. 5-12 SPINNEL
 - 10. 5-12 SPINNEL
 - 11. 5-12 SPINNEL
 - 12. 5-12 SPINNEL
 - 13. 5-12 SPINNEL
 - 14. 5-12 SPINNEL
 - 15. 5-12 SPINNEL
 - 16. 5-12 SPINNEL
 - 17. 5-12 SPINNEL
 - 18. 5-12 SPINNEL
 - 19. 5-12 SPINNEL
 - 20. 5-12 SPINNEL
 - 21. 5-12 SPINNEL
 - 22. 5-12 SPINNEL
 - 23. 5-12 SPINNEL
 - 24. 5-12 SPINNEL
 - 25. 5-12 SPINNEL
 - 26. 5-12 SPINNEL
 - 27. 5-12 SPINNEL
 - 28. 5-12 SPINNEL
 - 29. 5-12 SPINNEL
 - 30. 5-12 SPINNEL
 - 31. 5-12 SPINNEL
 - 32. 5-12 SPINNEL
 - 33. 5-12 SPINNEL
 - 34. 5-12 SPINNEL
 - 35. 5-12 SPINNEL
 - 36. 5-12 SPINNEL
 - 37. 5-12 SPINNEL
 - 38. 5-12 SPINNEL
 - 39. 5-12 SPINNEL
 - 40. 5-12 SPINNEL
 - 41. 5-12 SPINNEL
 - 42. 5-12 SPINNEL
 - 43. 5-12 SPINNEL
 - 44. 5-12 SPINNEL
 - 45. 5-12 SPINNEL
 - 46. 5-12 SPINNEL
 - 47. 5-12 SPINNEL
 - 48. 5-12 SPINNEL
 - 49. 5-12 SPINNEL
 - 50. 5-12 SPINNEL
 - 51. 5-12 SPINNEL
 - 52. 5-12 SPINNEL
 - 53. 5-12 SPINNEL
 - 54. 5-12 SPINNEL
 - 55. 5-12 SPINNEL
 - 56. 5-12 SPINNEL
 - 57. 5-12 SPINNEL
 - 58. 5-12 SPINNEL
 - 59. 5-12 SPINNEL
 - 60. 5-12 SPINNEL
 - 61. 5-12 SPINNEL
 - 62. 5-12 SPINNEL
 - 63. 5-12 SPINNEL
 - 64. 5-12 SPINNEL
 - 65. 5-12 SPINNEL
 - 66. 5-12 SPINNEL
 - 67. 5-12 SPINNEL
 - 68. 5-12 SPINNEL
 - 69. 5-12 SPINNEL
 - 70. 5-12 SPINNEL
 - 71. 5-12 SPINNEL
 - 72. 5-12 SPINNEL
 - 73. 5-12 SPINNEL
 - 74. 5-12 SPINNEL
 - 75. 5-12 SPINNEL
 - 76. 5-12 SPINNEL
 - 77. 5-12 SPINNEL
 - 78. 5-12 SPINNEL
 - 79. 5-12 SPINNEL
 - 80. 5-12 SPINNEL
 - 81. 5-12 SPINNEL
 - 82. 5-12 SPINNEL
 - 83. 5-12 SPINNEL
 - 84. 5-12 SPINNEL
 - 85. 5-12 SPINNEL
 - 86. 5-12 SPINNEL
 - 87. 5-12 SPINNEL
 - 88. 5-12 SPINNEL
 - 89. 5-12 SPINNEL
 - 90. 5-12 SPINNEL
 - 91. 5-12 SPINNEL
 - 92. 5-12 SPINNEL
 - 93. 5-12 SPINNEL
 - 94. 5-12 SPINNEL
 - 95. 5-12 SPINNEL
 - 96. 5-12 SPINNEL
 - 97. 5-12 SPINNEL
 - 98. 5-12 SPINNEL
 - 99. 5-12 SPINNEL
 - 100. 5-12 SPINNEL
- MATERIALS LEGEND**
- 1. CONCRETE
 - 2. ASPHALT
 - 3. WOOD FIBER PLAY SURFACE
 - 4. RUBBER PLAY SURFACE
 - 5. CRUSHED FINE INCH
 - 6. EXISTING LANDSCAPE
 - 7. LANDSCAPE BOULDER
- 1" = 10'

Pinon Park Concept 2





Update Amenities: Athletic Fields -Renovations Almost Complete

- Dara Jones
- Hope
- Bomber



Temporary Chiller Installed at the Ice Rink



Finished Kitchen at Betty Ehart Senior Center



BMX Track Project in Progress



Phase 1-Shore Power at Ashley Pond Complete



Golf Course Renovation Moving Along



Skate Park is Complete





Operational Excellence- Infrastructure Asset Management



Assess all playlots to identify whether they serve the highest and best use in their current form and function.

Underutilized
Amenities Survey
and Input completed.





Operational Excellence- Infrastructure Asset Management



Design of Outdoor Classroom at MPL **- Currently In the Design Phase**





Quality of Life- Health, Wellbeing, and Social Services



Develop a plan to attract and retain qualified and diverse volunteer staff for all services and activities.



Monthly Trail Work Groups March-October

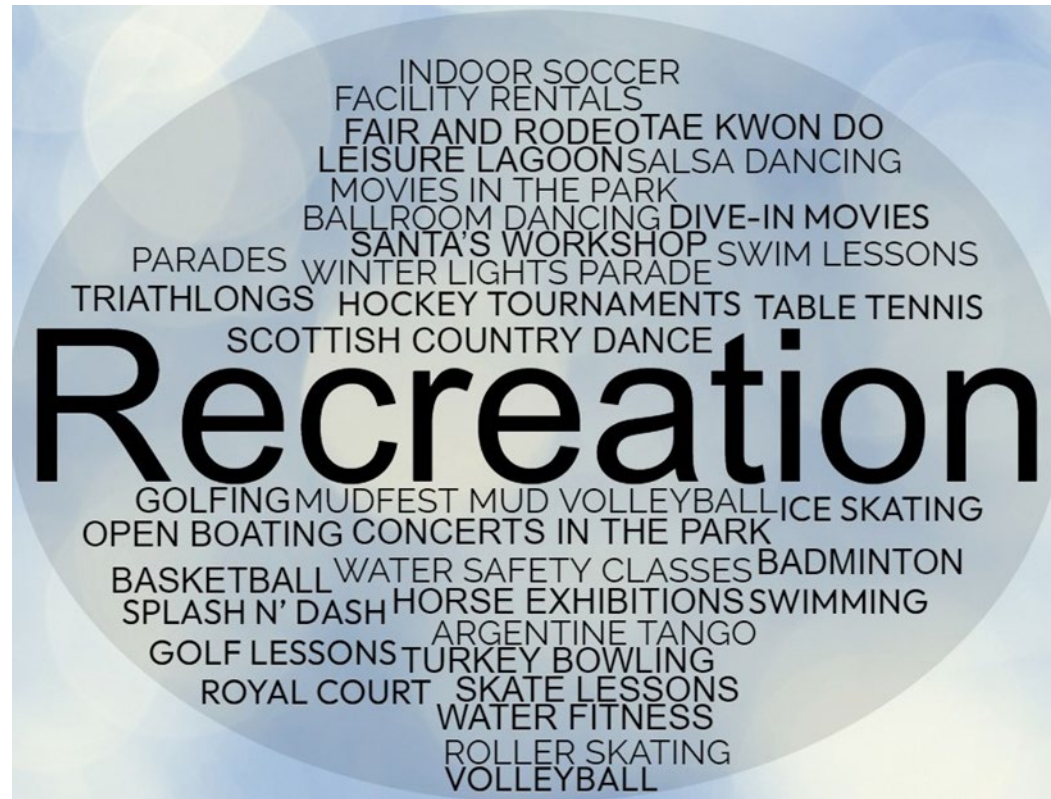
	VOLUNTEERS	VOLUNTEER HOURS
Recreation Programs	16	36
Parks	88	412
Open Space	52	248
Other Volunteer Opportunities	~570	~11,500



Quality of Life- Health, Wellbeing, and Social Services



Recreation Programming Plan- Complete

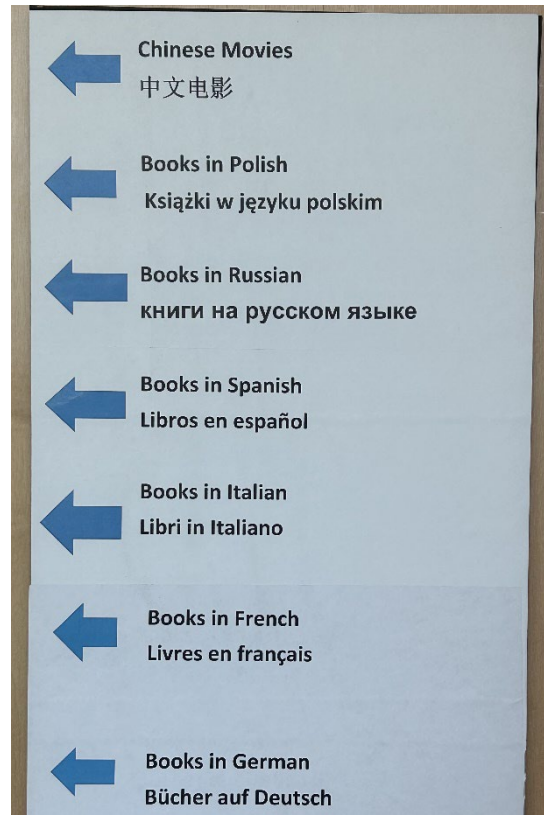




Quality of Life- Health, Wellbeing, and Social Services



Evaluate and support offerings that improve cultural, educational, lifelong learning and social development.



Libraries As Launchpads

-One of only 6 libraries chosen nationwide!





20 YEARS OF TRANSFORMING LIVES



SOCIAL SERVICES: addressing the social/emotional/behavioral health needs of the community.



Las Clinicas del Norte





Roller Skate Nights at the *Ice Rink!*

May 4	Star Wars: May the 4th be with you
May 18	70's Disco
June 13 & 15	Schools Out for Summer
June 27 & 29	Tropical Night
July 11 & 13	Viking Night
July 25 & 27	Country Night
August 10	Team Jerzy Night
August 24	Back to School





Quality of Life- Health, Wellbeing, and Social Services



Continue to partner with the schools, Teen Center, Youth Activity Center, and other organizations to provide afterschool activities, homework, and online learning support.

COMMUNITY CONVERSATIONS: Worked collaboratively with JJAB, Courts, LAPS & others to address substance use issues with teens & parents



Los Alamos Public Schools





Collaboration between most CSD divisions and other local agencies

JJAB, Municipal Court, Teen Court, LAPD, DWI, Family YMCA, Teen Center, LA Middle School, Studio on the Mesa, Youth Active Center, PEEC, LA Arts Council

Joint Use Agreement with LAPS
updated & adopted into one
comprehensive document.



Los Alamos Public Schools



Quality of Life- Health, Wellbeing, and Social Services



Complete Community Health Plan and Begin Implementation



Comprehensive Health Plan to be finished and presented to County Council December 2024.



Quality of Life- Health, Wellbeing, and Social Services



Increase and improve partnerships for knowledge training of where/how to receive social services. Train staff to disseminate accurate and appropriate information.



Staff created and presented "SSD 101" to share more info about the work of SSD.

Outreach at:

- Both Libraries
- Summer Concerts
- Farmer's Markets



Instituted Closed Loop Referral System



UNITE US



Quality of Life- Health, Wellbeing, and Social Services



Address mental health issues by developing partnerships with SSD & other organizations.

Youth Summit held on Opioid Overdose Prevention





Quality of Life- Health, Wellbeing, and Social Services



Expand programs in wellness/fitness, cultural, special needs, etc.

Roller Skating at the Ice Rink



Piloted Adult Movie Nights

Adult Movies in the Park

Tired of the kiddie movies in the park? Grab your picnic basket and come out for our Adult Date Night Movie in the Park, a free event, featuring a free movie suited for anybody 17 years or older.

Weather cancellations are made one hour before show time.

June 1 - *Boys in the Boat*

August 17 - *Bob Marley: One Love*





Quality of Life- Health, Wellbeing, and Social Services



Utilize nature education and stewardship opportunities to preserve, protect historic and cultural resources.

Los Alamos Historical Walking Tour

Dr. J. Robert Oppenheimer & Gen. Leslie Groves Sculptures

These sculptures of the Laboratory Director (Oppenheimer) and the Military Director (Groves) of the Manhattan Project, were designed to memorialize the historic photo of the two men standing at Ground Zero at Trinity Site after the successful plutonium bomb test on July 16, 1945. The sculptures honor two gifted World War II leaders with almost polar opposite personalities whose unique partnership won the wartime race to build an atomic bomb. The sculptures are part of the County Art in Public Places collection, and have become iconic symbols in the community and one of the most popular spots for visitors to take photos.

Below: Gen. Leslie Groves (center), head of the Manhattan Project, presented the Army-Navy "E" Award flag to the Laboratory on October 16, 1945, with Dr. J. Robert Oppenheimer (left) and University of California President Robert Sproul (right) looking on. Right top to bottom: Oppenheimer and Groves at Ground Zero at Trinity Site in 1945; Groves and Oppenheimer strategizing during the Manhattan Project.



Pick up a copy of the Historical Walking Tour Guide at the Los Alamos History Museum, Bradbury Science Museum, Los Alamos Nature Center, any of the Visitor Centers, or one of the visitor guide kiosks around town. Download one by scanning the QR code, or go to VISITLOSALAMOS.ORG.

LOS ALAMOS
where discoveries are made

Los Alamos
NM TRUE





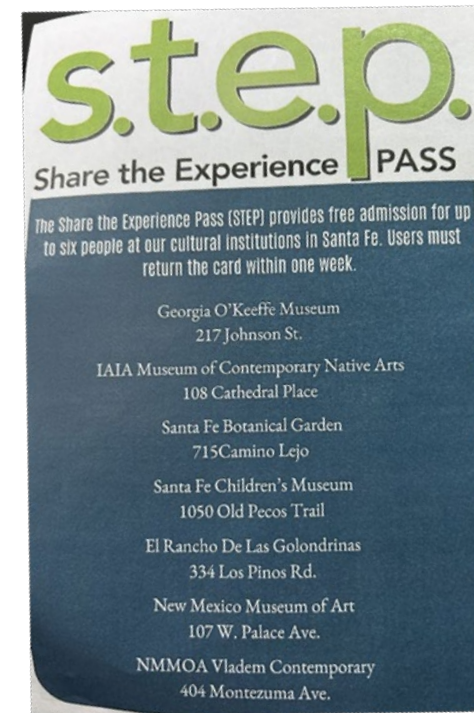
Quality of Life- Diversity, Equity, and Inclusivity



Provide programming that is unique and varied for our community's diverse interests.



Library: Expanded Atomicon



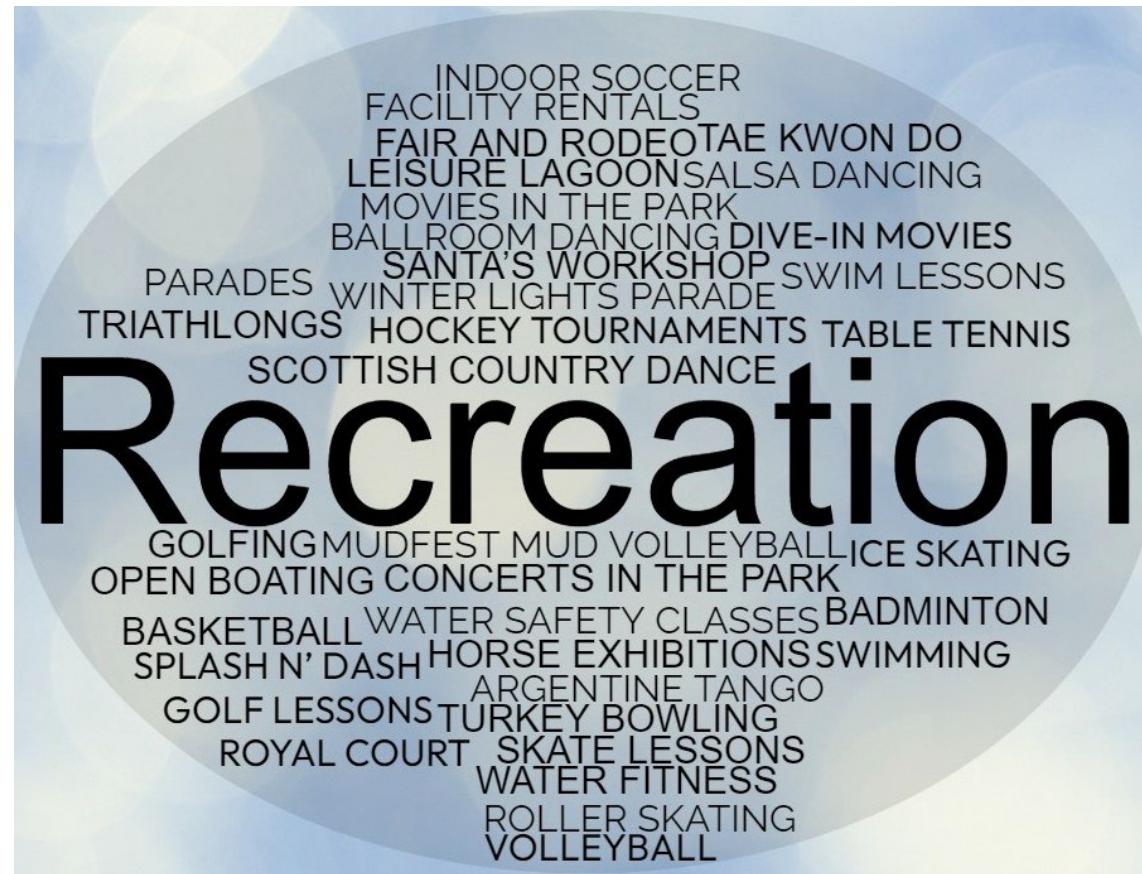
Library of Things Collection



Quality of Life- Diversity, Equity, and Inclusivity



Provide programming that is unique and varied for our community's diverse interests.



Offered an additional
Gymkhana- "games on
horseback" events.





Intentionally seek bands that
appeal to this region





July 4th Celebration





Triathlon



Fair & Rodeo Parade



Quality of Life- Diversity, Equity, and Inclusivity



Implement ADA Transition Plan and Audit

ADA Accessible Play Lot Improvements



NATURE PLAY EXAMPLES



1. ROCKY STREAM

2. TREE TRUNK STEPPERS

3. ROCKY LOG BALANCE BEAM



Environmental Stewardship- Natural Resource Protection



Enhance trails and open space to meet the needs of the community and visitors.





Environmental Stewardship- Natural Resources Protection



Continue to look for opportunities to improve operations sustainability.

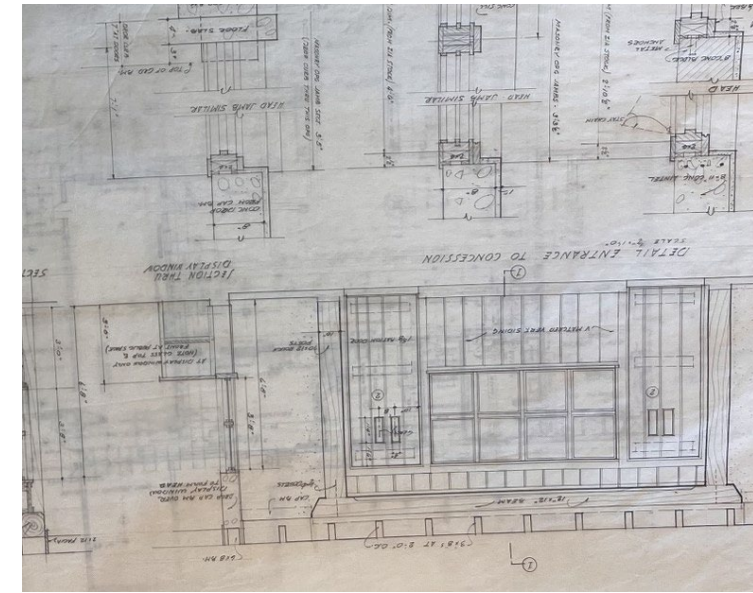


- Bee City
- Expanded Seed Library
- Parks and Open Space
Piloting Use of Battery
Powered Equipment



What's Next?

- Master Plan for N.Mesa Recreation Area
- Brewer Arena Renovation
- Athletic Court Renovations
- MPL Sound Study
- North Mesa Picnic Grounds Renovation
- Evaluate and Review Restrooms for Year-Round Use
- Planning an additional series of 3 Community Conversations
- Older Adult Summit in October
- Expanding Recreation Programs & Offerings





Thank you!

Any

