



 LOS ALAMOS

Bohannon  Huston

# Los Alamos County NM4 Crossing & Multi-Use Trail Improvement Project San Ildefonso Pottery Replica Relocation Request

June 26, 2025

Arts in Public Spaces Advisory Board

An aerial photograph of a suburban neighborhood with houses, trees, and streets. At the bottom of the image, there is a horizontal row of white silhouettes representing a diverse group of people: a group of three adults, a person with a child, a person jumping, a person with a child, a person pointing, a child, a person walking a dog, a person on a bicycle, a person carrying a child, a family of four, two elderly people with canes, a person with a stroller, and a child on a tricycle.

 LOS ALAMOS

Bohannon  Huston

# Los Alamos County NM4 Crossing & Multi-Use Trail Improvement Project San Ildefonso Pottery Replica Relocation Request

June 26, 2025

Arts in Public Spaces Advisory Board



LOS ALAMOS

Bohannon  Huston

# Los Alamos County NM4 Crossing & Multi-Use Trail Improvement Project San Ildefonso Pottery Replica Relocation Request

June 26, 2025

Arts in Public Spaces Advisory Board



LOS ALAMOS

Bohannon  Huston

# Los Alamos County NM4 Crossing & Multi-Use Trail Improvement Project San Ildefonso Pottery Replica Relocation Request

June 26, 2025

Arts in Public Spaces Advisory Board



# INTRODUCTIONS



LOS ALAMOS

**Keith Wilson, PTP, RSP1**

Deputy Public Works  
Director

*Public Works Department*

**John Stricklan, PE**

Engineer Project Manager

*Public Works Department*







# PROJECT OVERVIEW



# VICINITY MAP

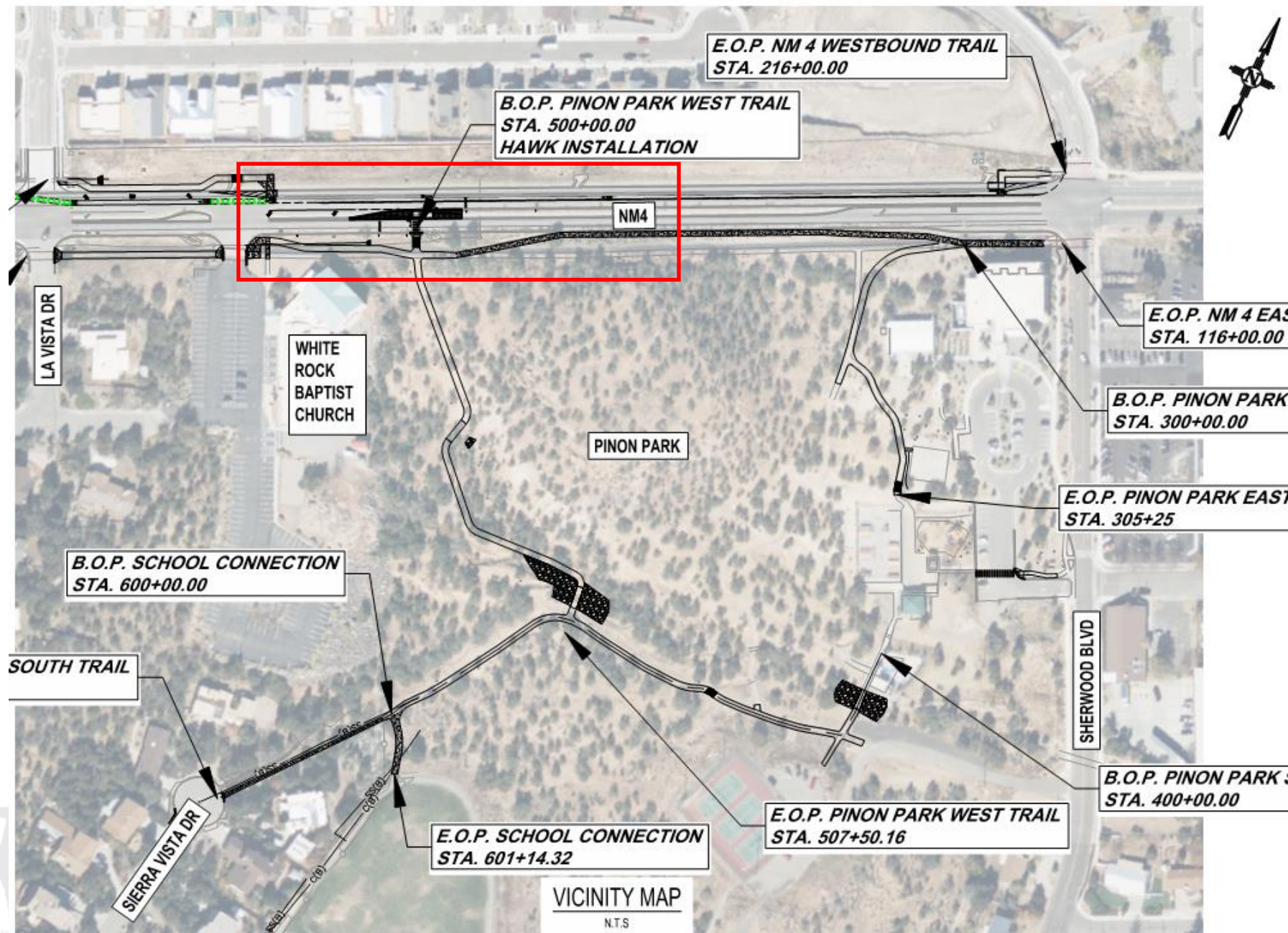
## Within the Project Area:

- Along NM4 between Sherwood Blvd. and La Vista Dr.
- Piñon Park
- Piñon Elementary School



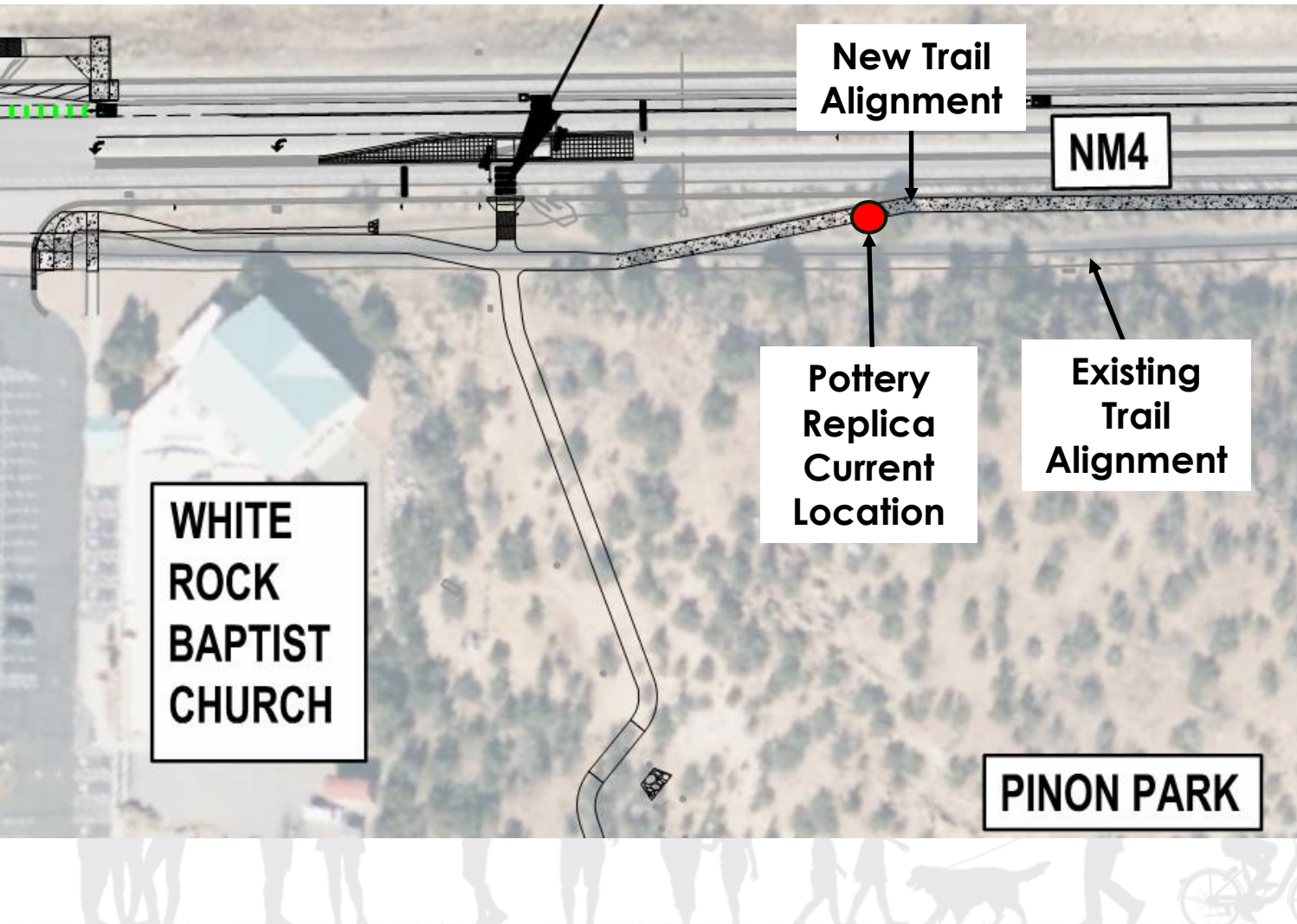


# PROJECT OVERVIEW





# San Ildefonso Pottery Replica Relocation Request







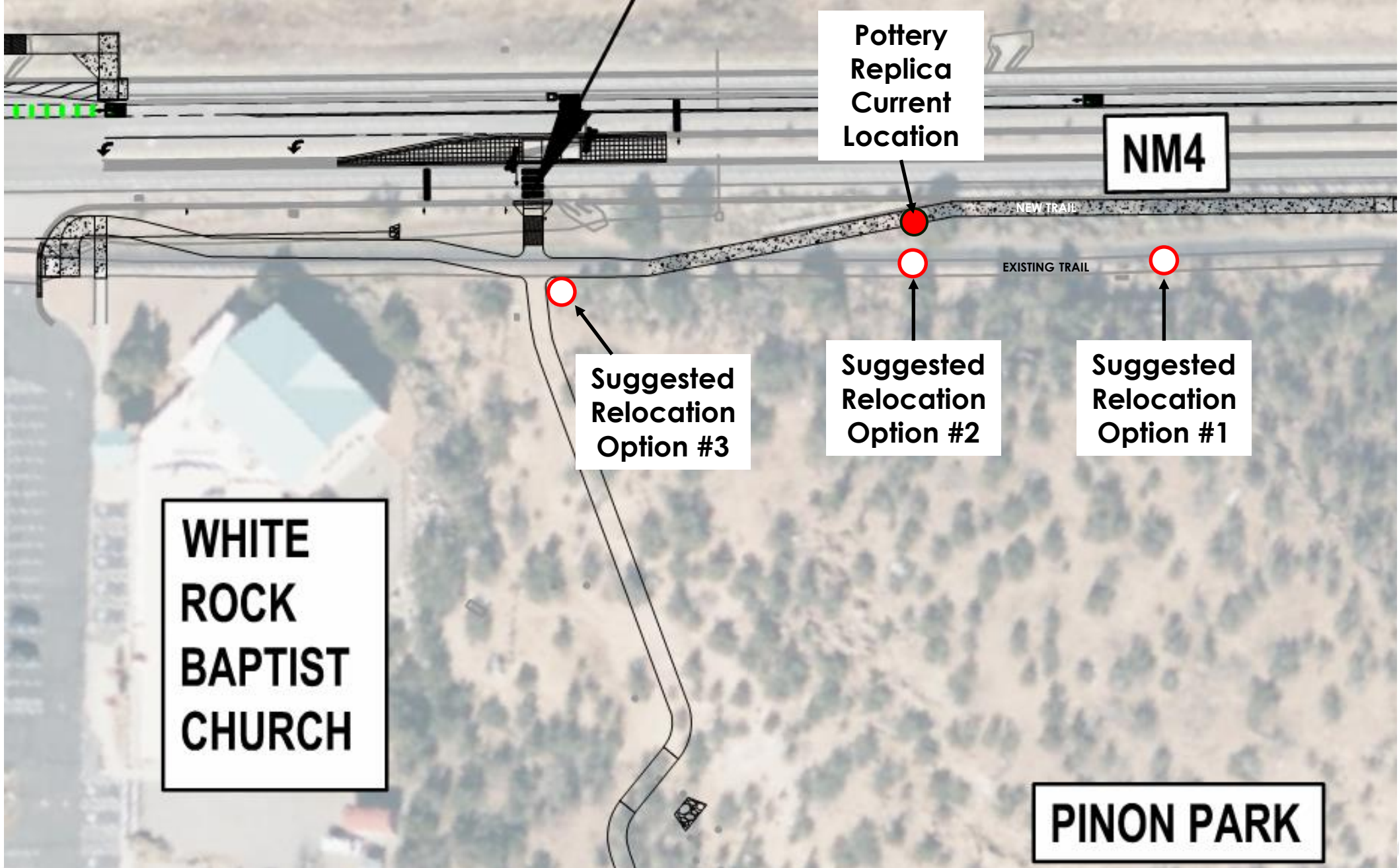
Pottery  
Replica  
Current  
Location

New Trail  
Alignment

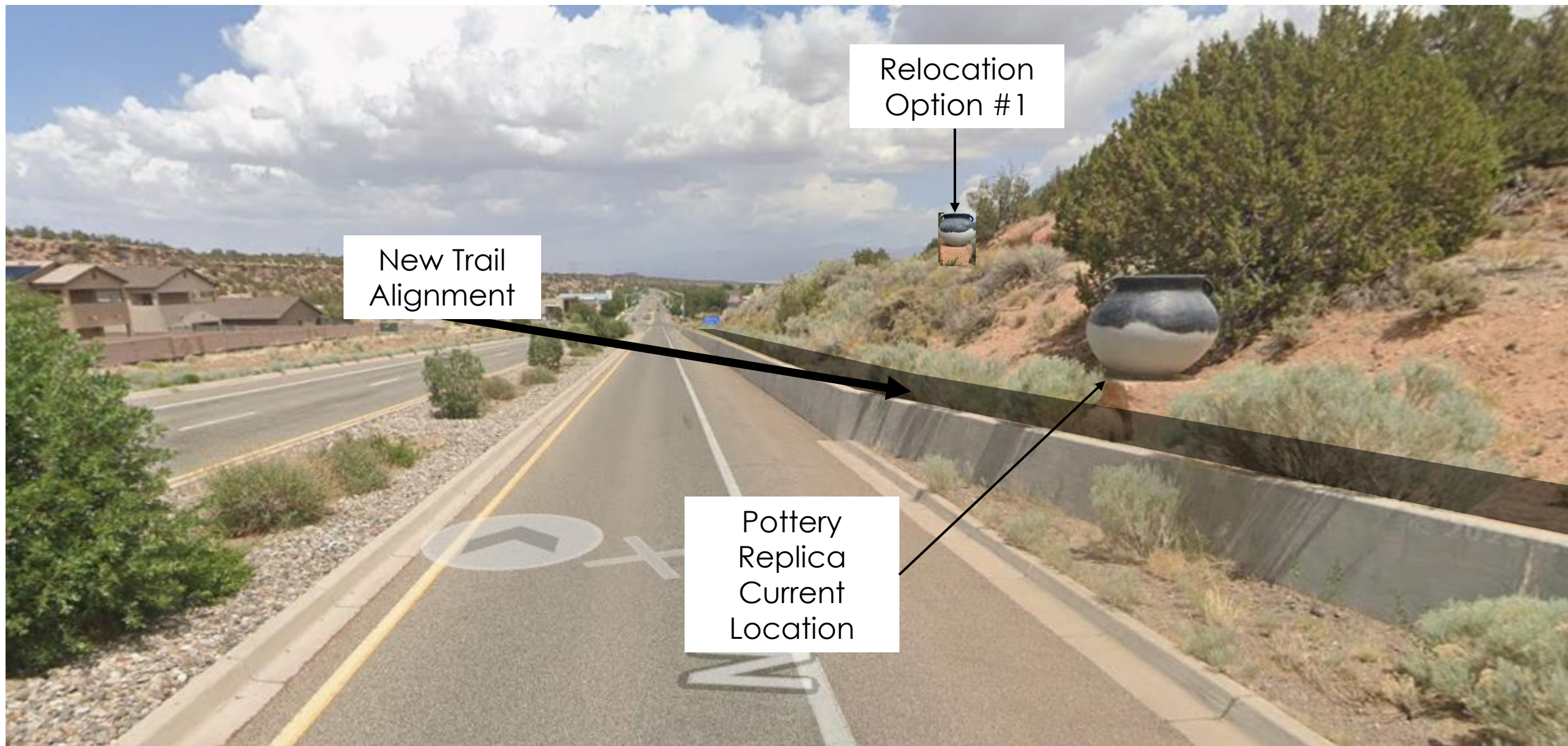
Existing Trail  
Alignment









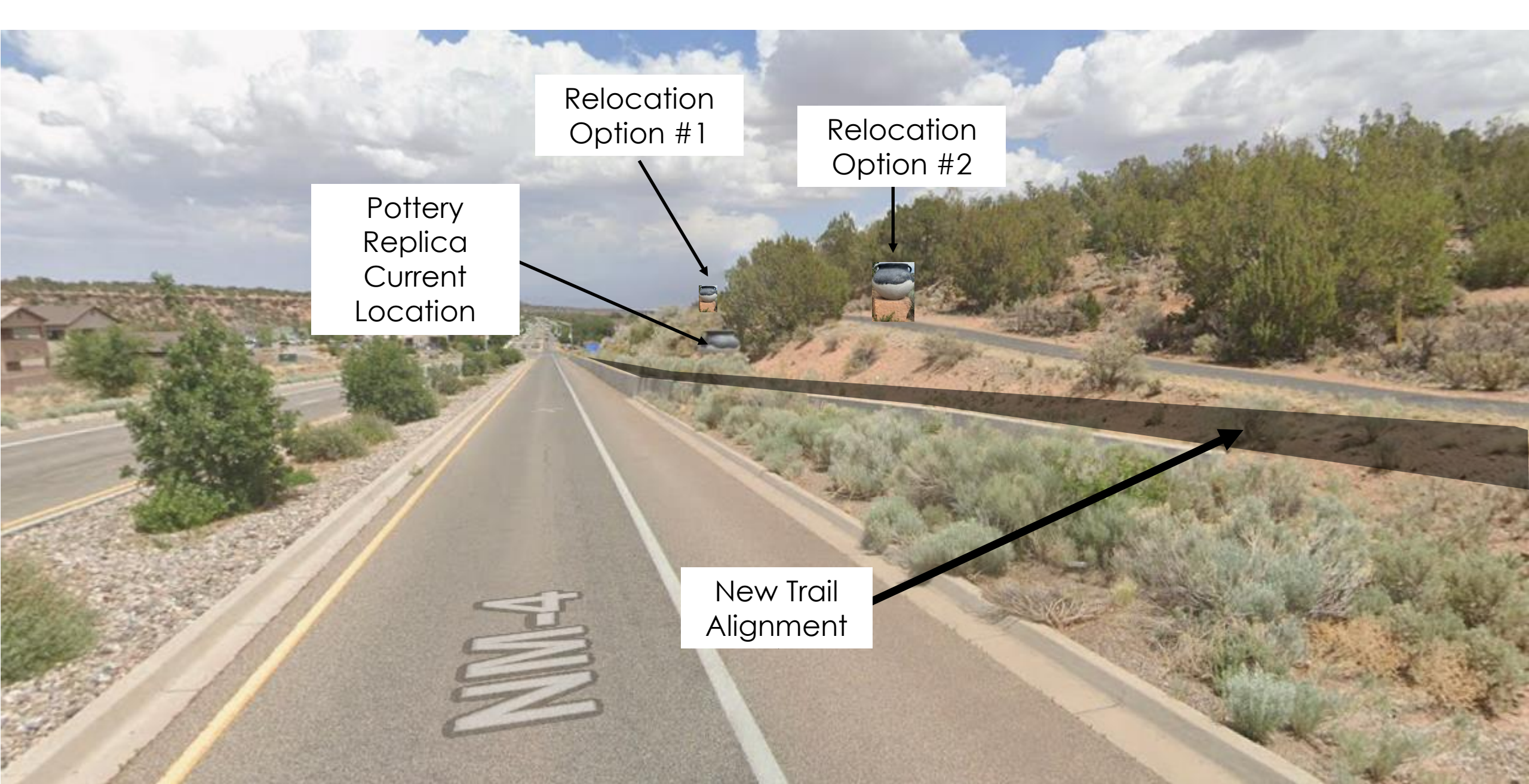


New Trail  
Alignment

Relocation  
Option #1

Pottery  
Replica  
Current  
Location





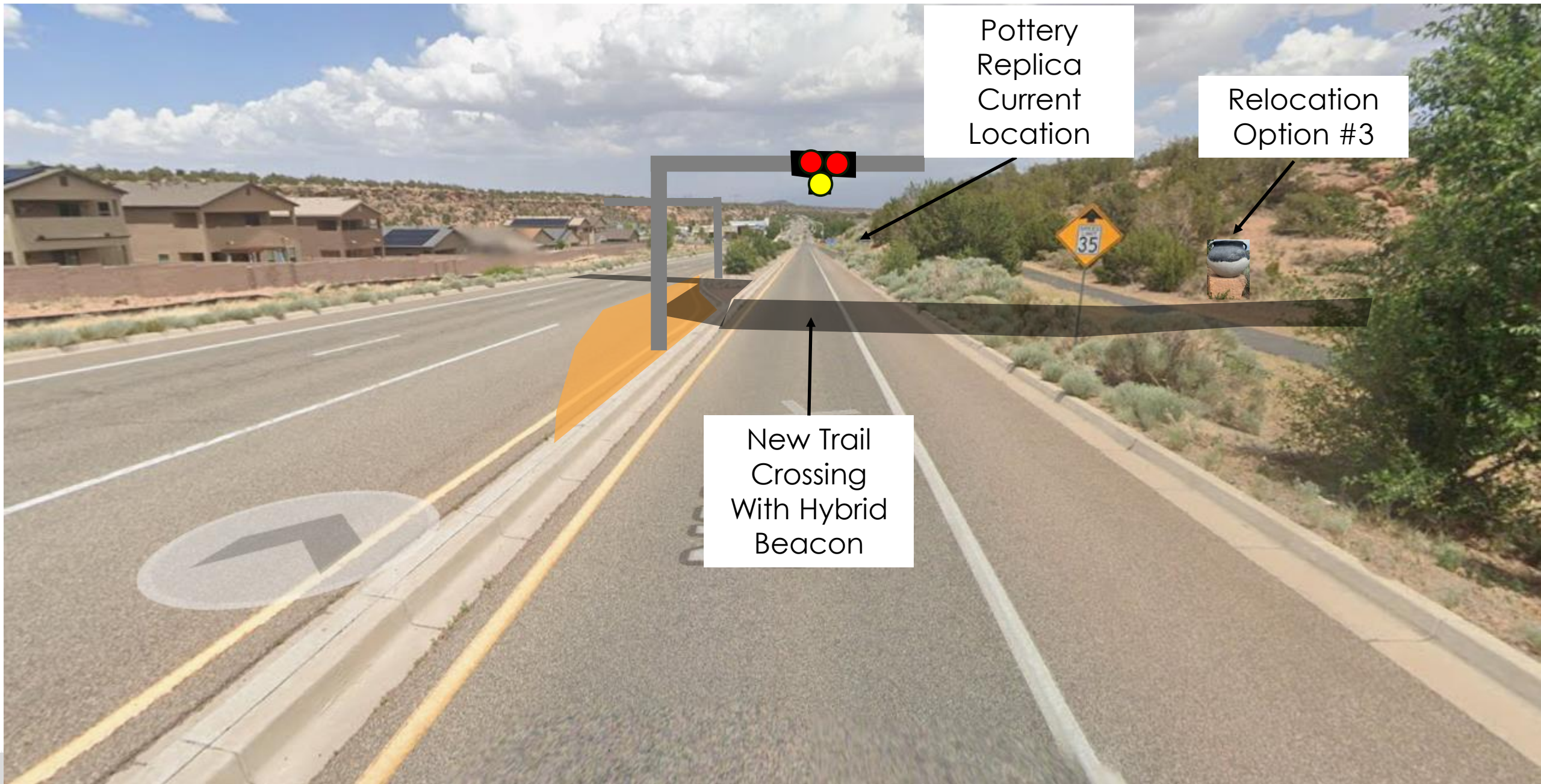
Pottery  
Replica  
Current  
Location

Relocation  
Option #1

Relocation  
Option #2

New Trail  
Alignment



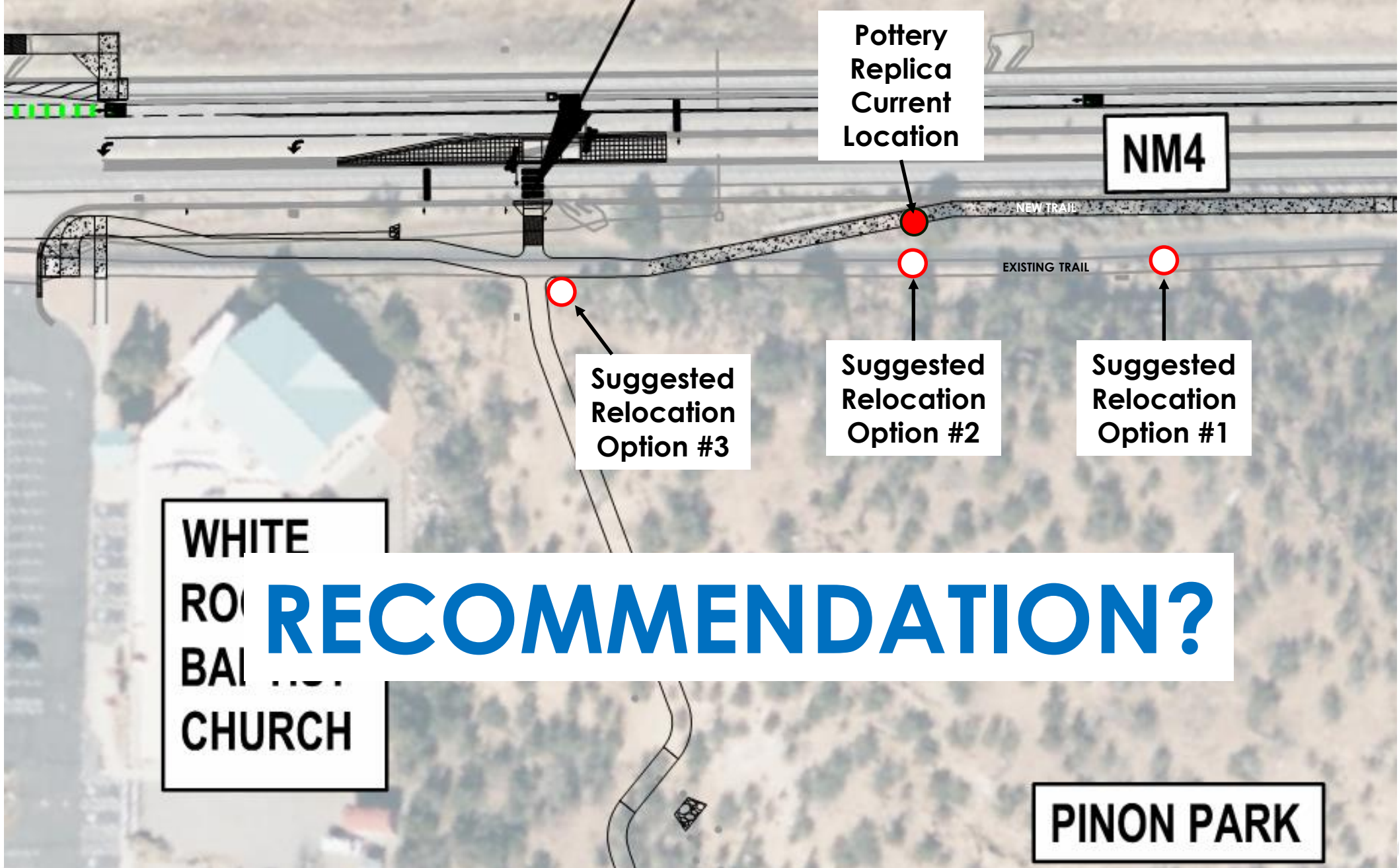


Pottery  
Replica  
Current  
Location

Relocation  
Option #3

New Trail  
Crossing  
With Hybrid  
Beacon







A high-contrast, black and white photograph showing the lower legs and feet of several people walking across a crosswalk. The crosswalk is marked with thick white stripes on a dark asphalt surface. Long, dark shadows are cast across the stripes, indicating a low sun position. The text "NEXT STEPS" is overlaid in the top right corner in a bold, white, sans-serif font.

**NEXT STEPS**



# PROJECT SCHEDULE

**Public Meeting 1:**  
December 6, 2024

**Final Design (90%):**  
Early May 2025

**Public Meeting 3:**  
Late Summer 2025

**Public Meeting 2:**  
February 5 2025

**Approved Design (100%):**  
July 2025

**Construction:**  
Fall 2025 – Fall 2026





# OTHER QUESTIONS?





# Contacts

Keith Wilson

Public Works Department

1000 Central Avenue, Suite 160

Los Alamos, NM 87544

or

Email: [keith.wilson@lacnm.us](mailto:keith.wilson@lacnm.us)

or

Phone: (505)663-1757

