

Green Los Alamos

Green Los Alamos recognizes your commitment to environmental stewardship and supports your ongoing efforts. Your actions help foster a healthy, vibrant community, and your continued participation strengthens our shared goal of lasting, positive change for everyone.

Tiers:

Bronze Seal: 15 completions

Silver Seal: 25 completions

Gold Seal: 35 completions, verified with visit

What do I need to do?

1. Complete this form.
2. A team will review your submission.
3. Gold Seal applicants will be contacted to schedule a verification site visit.
4. You will receive your recognition packet (letter, seal, digital media).



Business Name *

Business Type

Business License # *

Point of Contact Name *

Business Location

Mailing Address (if different from above)

Address Line 1

Address Line 2

City

State



Zip Code

Phone of Contact Person

Email of Contact Person

I prefer to be contact via:

☐ Phone ☒ Email

Do you rent or own your occupied space?

☒ Tenant ☐ Owner

Would you be interested in a free building walk-through and utility bill assessment?

☐ Yes ☒ No

The following sections will walk you through self-certification for Green Los Alamos.

Not answering a question implies a non-interest in the topic or a non-application to your business.

If you are interested in learning more about any of the topics, please mark "Interested" and you will be contacted directly with additional resources.

Energy Management



***These items help protect our Dark Skies. Complying with these initiatives are also a step toward meeting the Los Alamos County Outdoor Lighting Ordinance.*

We use LED lighting inside and outside.

☐ Yes ☐ No ☐ Interested

Outdoor building lights are Dark Sky friendly.**

☐ Yes ☐ No ☐ Interested

Dark Sky Friendly lighting is fully shielded (no light cast above the horizontal), serves a clear purpose, is of a warmer color (no more than 2700K), reduces glare, and is no brighter than necessary.

We installed automated sensors (motion, time-based, daylight, dimmers, etc.) where applicable on interior fixtures.

☐ Yes ☐ No ☐ Interested

Parking lot lights are Dark Sky friendly.**

☐ Yes ☐ No ☐ Interested

Dark Sky Friendly lighting is fully shielded (no light cast above the horizontal), serves a clear purpose, is of a warmer color (no more than 2700K), reduces glare, and is no brighter than necessary.

Parking lot lights are automated for nighttime use.**

☐ Yes ☐ No ☐ Interested

Lights are set to turn on near dusk and off near dawn. Additional controls include motion sensors and dimmers to reduce the intensity when there is no activity.

Window treatments are in place to help control external temperature swings.

☐ Yes ☐ No ☐ Interested

Doors, windows, and loading doors have been weatherstripped or replaced to eliminate gaps and cracks.

☐ Yes ☐ No ☐ Interested

Routine checks are in place to monitor for propped doors and windows creating unwanted drafts.

☐ Yes ☐ No ☐ Interested

Appliances have been upgraded with high efficient models when time for replacement.

☐ Yes ☐ No ☐ Interested

Power management functions (sleep mode) are enabled on appropriate equipment (computers, printers/copiers, registers, monitors, etc.).

☐ Yes ☐ No ☐ Interested

Equipment that needs to operate at night has been identified and the energy accounted for.

☐ Yes ☐ No ☐ Interested

Centralized, communal , or networked systems are in place to reduce the need for individual devices such as printers and refrigerators.

☐ Yes ☐ No ☐ Interested

We know who operates the HVAC system and have a routine maintenance schedule in place.

☐ Yes ☐ No ☐ Interested

HVAC set points are enabled to minimize excessive use during unoccupied times.

☐ Yes ☐ No ☐ Interested

Solar panels are installed.

☐ Yes ☐ No ☐ Interested

The hot water temperature is set to maintain safe water heater conditions while not scalding users.

☐ Yes ☐ No ☐ Interested

Other energy management initiatives we've implemented:

Please upload any supporting photos/files here.

Upload

or drag files here.

Submitted photos may be used for promotional materials associated with this program.

Water Management



Low-flow fixtures are installed.

☐ Yes ☐ No ☐ Interested

Toilets have a flush rate of 1.6 gallons per flush or less.

Fixtures are monitored for leaks and repaired promptly.

☐ Yes ☐ No ☐ Interested

Water is provided to customers when requested.

☐ Yes ☐ No ☐ Interested

Landscaping is water-wise

☐ Yes ☐ No ☐ Interested

Irrigation systems are monitored for leaks, misdirection of water spray, and over watering.

☐ Yes ☐ No ☐ Interested

This can include signing up for leak alerts, fixing broken sprinkler heads, and watering on appropriate days.

Alternative water sources, such as rain barrels or greywater, are utilized in outdoor irrigation.

☐ Yes ☐ No ☐ Interested

Other water management initiatives we've implemented:

Please upload any supporting photos/files here.

Upload

or drag files here.

Submitted photos may be used for promotional materials associated with this program.

Waste Management

Other waste management initiatives we've implemented:

Please upload any supporting photos/files here.

Upload

or drag files here.

Submitted photos may be used for promotional materials associated with this program.

Operational Sustainability



Landscapers are using electric engine tools.

☐ Yes ☐ No ☐ Interested

We use electric air hand dryers in our restrooms.

☐ Yes ☐ No ☐ Interested

Cleaning supplies are non-toxic and refillable.

☐ Yes ☐ No ☐ Interested

Tree-based products, when replaced, are Forest Stewardship Council (FSC)-certified.

☐ Yes ☐ No ☐ Interested

We have planted shade-creating landscaping.

☐ Yes ☐ No ☐ Interested

We participate in local sustainability events.

☐ Yes ☐ No ☐ Interested

We offer discounts for customers using reusable items.

☐ Yes ☐ No ☐ Interested

We've reduced paper waste with digital-only versions.

☐ Yes ☐ No ☐ Interested

We support the Bee City Initiative with our pollinator-friendly landscaping.

☐ Yes ☐ No ☐ Interested

Other sustainability initiatives we've implemented:

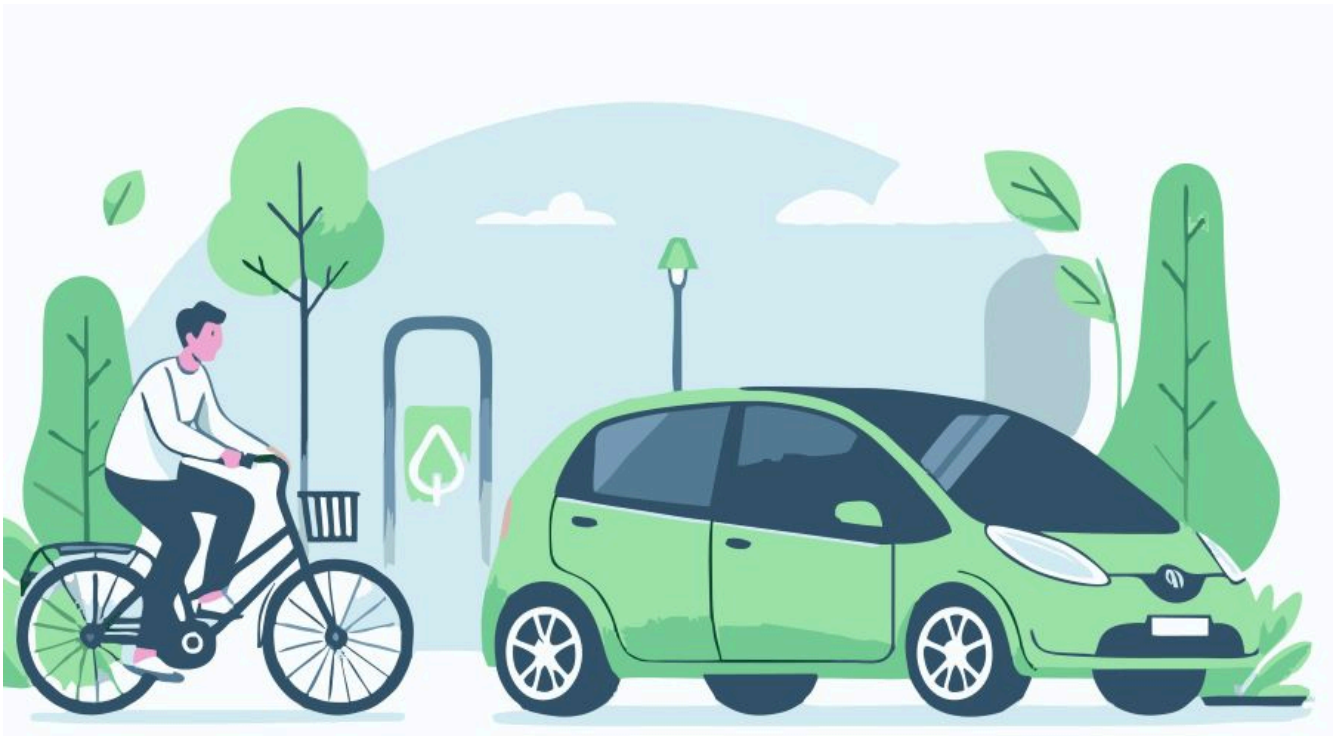
Please upload any supporting photos/files here.

Upload

 or drag files here.

Submitted photos may be used for promotional materials associated with this program.

Transportation



We offer bicycle parking for employees.

☐ Yes ☐ No ☐ Interested

We offer bicycle parking for customers.

☐ Yes ☐ No ☐ Interested

We offer EV charging for employees.

☐ Yes ☐ No ☐ Interested

We offer EV charging for customers.

☐ Yes ☐ No ☐ Interested

We encourage carpooling for employees.

☐ Yes ☐ No ☐ Interested

We offer teleworking for employees.

☐ Yes ☐ No ☐ Interested

We use hybrid or EV fleet vehicles.

☐ Yes ☐ No ☐ Interested

Other transportation initiatives we've implemented:

Please upload any supporting photos/files here.

Upload

or drag files here.

Submitted photos may be used for promotional materials associated with this program.

Representing this business, I hereby declare that the information provided in the Green Los Alamos Sustainable Business Seal self-certification is true to the best of my knowledge and belief. I take full responsibility for the correctness of the marked completions and the burden of proof remains within the daily operations. *

×

draw type

LOS ALAMOS



where discoveries are made

Submit

Save