



RENDERING LOOKING NORTH AT MAIN ENTRY

FIXTURE PLAN NOTES

1. REFER TO SHEET A-401 FOR EQUIPMENT SCHEDULE.
2. REFER TO SLAB PLAN SHEET A-104 FOR FLOOR DRAIN, RECESSED SLAB, AND CONCRETE PAD LOCATIONS.
3. REFER TO ENLARGED PLANS (SHEET A-401) FOR ADDITIONAL EQUIPMENT IDENTIFIERS.



vega

1658 cole blvd, g20
lakewood, co 80401
303.872.0487 x101
vegaarchitecture.com

Copyright 2025
This document is an instrument of service, and as such, remains the property of the architect. Permission for use of this document as a bid and can be obtained only by written agreement with vega architecture llc.

FIRE STATION 4
4401 DIAMOND DRIVE
LOS ALAMOS, NM 87545

P24.0730 LAC,FS4

Issue

100% CONSTRUCTION DOCUMENTS
01.09.2026



A1 **FIXTURE PLAN | MAIN LEVEL**
SCALE: 1/8" = 1'-0"





vega

1658 cole blvd, g20 lakewood, co 80401

303.872.0487 x101 vegaarchitecture.com

COMPANY 2025 This document is an instrument of service, and as such, remains the property of the architect. Permission to use this document is limited to the project and shall not be extended to any other project without the written consent of the architect.

LOWER LEVEL PLAN NOTES

1. DIMENSIONS ARE TO GRID LINES AND TO THE FACE OF STUDS, MASONRY AND CONCRETE OF NEW WALLS AND FINISHED FACE OF (E) WALLS UNLESS OTHERWISE NOTED. MASONRY DIMENSIONS ARE NOMINAL. DIMENSIONS NOTED "CLR" ARE FROM FINISH FACE TO FINISH FACE.
 2. "EQUAL" INDICATES MULTIPLE DIMENSIONS OF THE SAME VALUE WITHIN A DIMENSION STRING.
 3. OPENINGS WITHIN STUD CONSTRUCTION ARE DIMENSIONED TO THEIR CENTERLINE.
 4. DOOR OPENINGS WITHIN STUD PARTITIONS SHALL BE LOCATED WITH THE HINGE SIDE 4" TO FROM FACE OF STUD OF THE ADJACENT PARTITION, UNO.
 5. PROVIDE METAL CORNER BEAD ON ALL EXPOSED CORNERS & EDGES.
 7. PARTITIONS ARE TYPE P2 AND 10'-0" TALL UNLESS OTHERWISE INDICATED. PARTITION TYPES CONTINUE AT OPENINGS AND AROUND CORNERS, UNO.
 8. PORTABLE FIRE EXTINGUISHERS SHALL BE FURNISHED BY G.C. AS REQUIRED BY THE INTERNATIONAL FIRE CODE. EXTINGUISHERS SHALL BE TYPE 3-A, 40-B; C W/ WALL BRACKET MOUNTED SO THAT TOP OF EXTINGUISHER IS @ 5'-0" AFF.
 6. REFER TO BJA-701 FOR TYPICAL QTY/BD, CONTROL JOINT LAYOUT.
 7. ALL FOUNDATIONS AND BELOW GRADE WALLS TO BE DAMP PROOFED.
 8. REFER TO SHEET A-601 FOR DOOR, FRAME AND WINDOW SCHEDULES.
 9. UNDER SLAB INSULATION SHALL BE 60 PSI MINIMUM XPS.
- ALL FLOOR ANCHORS @ LOWER LEVEL MUST NOT PENETRATE MORE THAN 1'-0" INTO SLAB. HYDRONIC PIPING IS EMBEDDED 2" INTO CONCRETE. ALL FLOOR PENETRATIONS MUST BE COORDINATED W/ HYDRONIC PIPING DESIGN.

LOWER LEVEL PLAN KEYNOTES

- 1 CENTER PARTITION ON COLUMN
- 2 FIELD COORDINATE FINAL DIMENSIONS OF PAD TO ENSURE PAD EXTENDS 4" MINIMUM BEYOND ALL SIDES OF EQUIPMENT
- 3 CONCRETE PLASTER, TYP. RE: STRUCTURAL DRAWINGS. INSULATED FURRING TO WRAP BUMP-OUTS.
- 4 FOUNDATION DRAINAGE SYSTEM TYPICAL WHERE INTERIOR FLOOR SLAB IS 6" OR MORE BELOW GRADE. RE: A56A301

LOWER LEVEL PLAN LEGEND

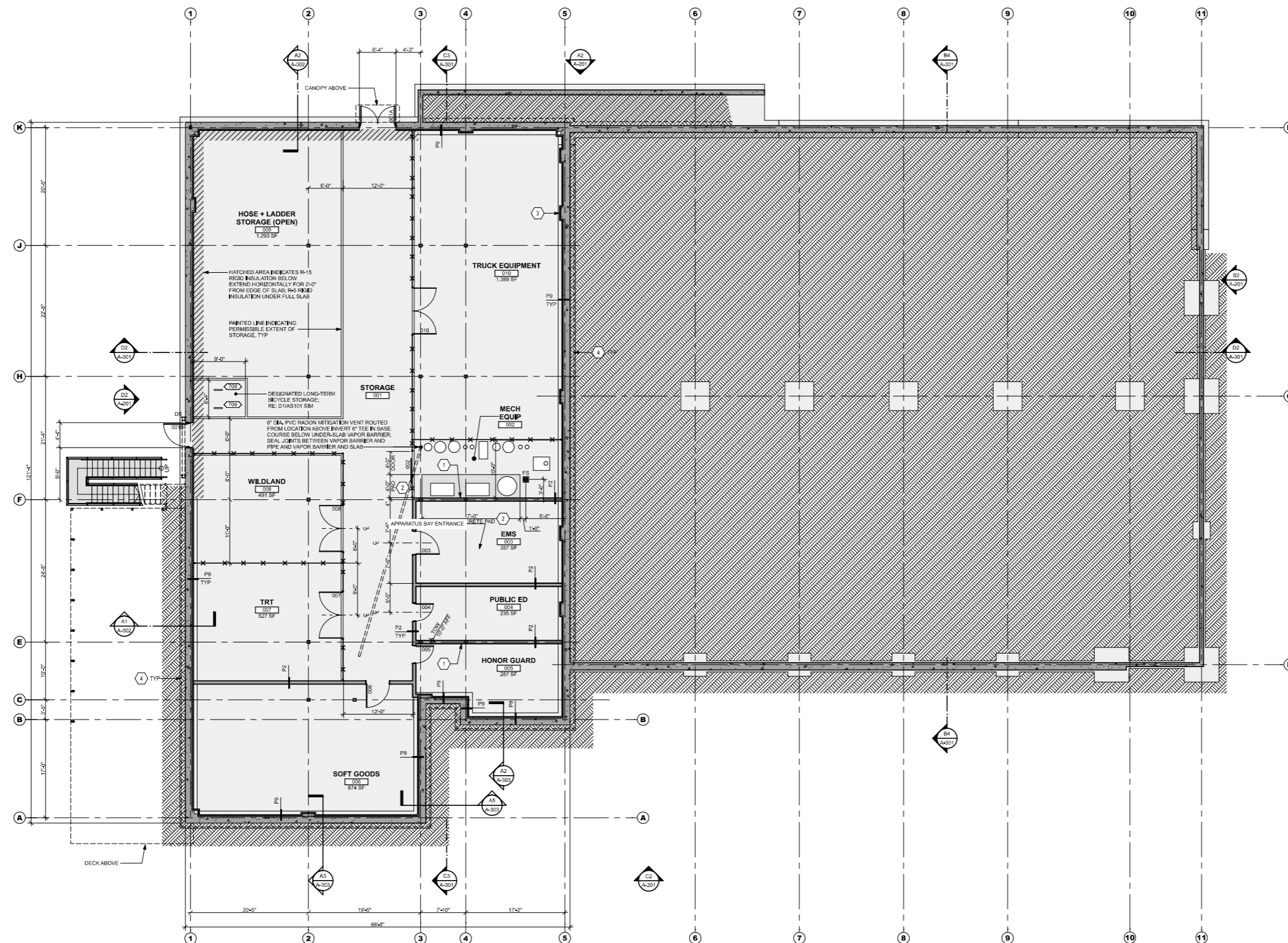
NEW CONSTRUCTION, REFER TO PARTITION TYPES

NEW DOOR AS SCHEDULED

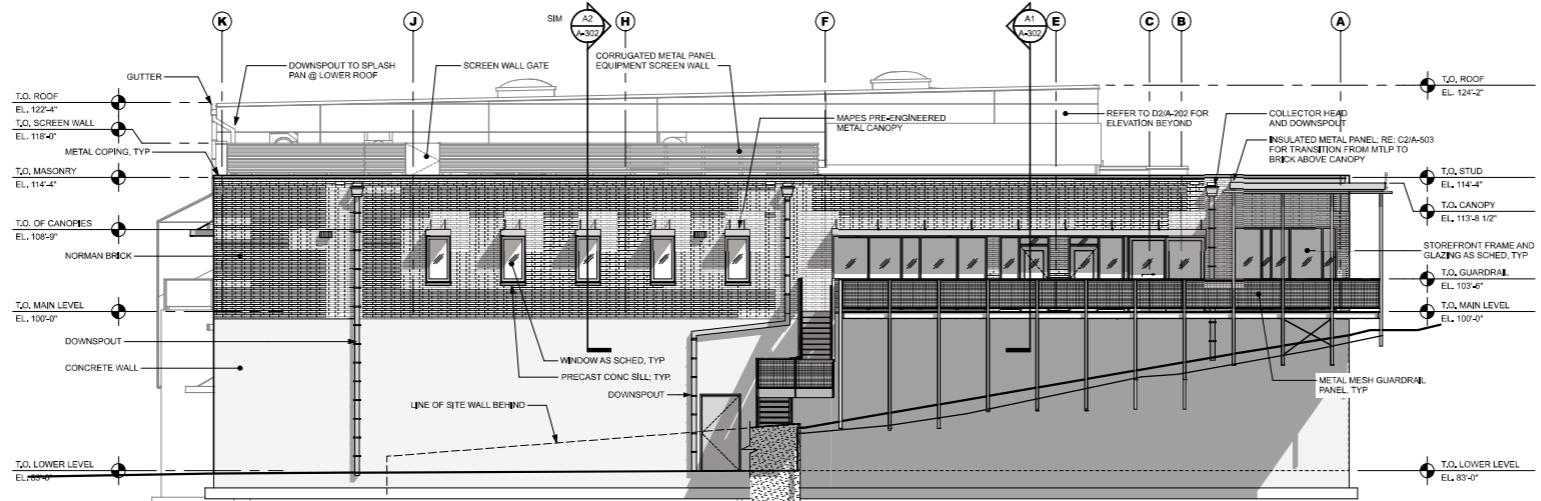
METAL MESH PARTITION, BASIS OF DESIGN: HURRY TRACK & WIRE WELDED WIRE PARTITION: 16'-0" HIGH, BLACK POWDER-COAT FINISH

FE FIRE EXTINGUISHER: 3-A, 40-B; C W/ WALL BRACKET.

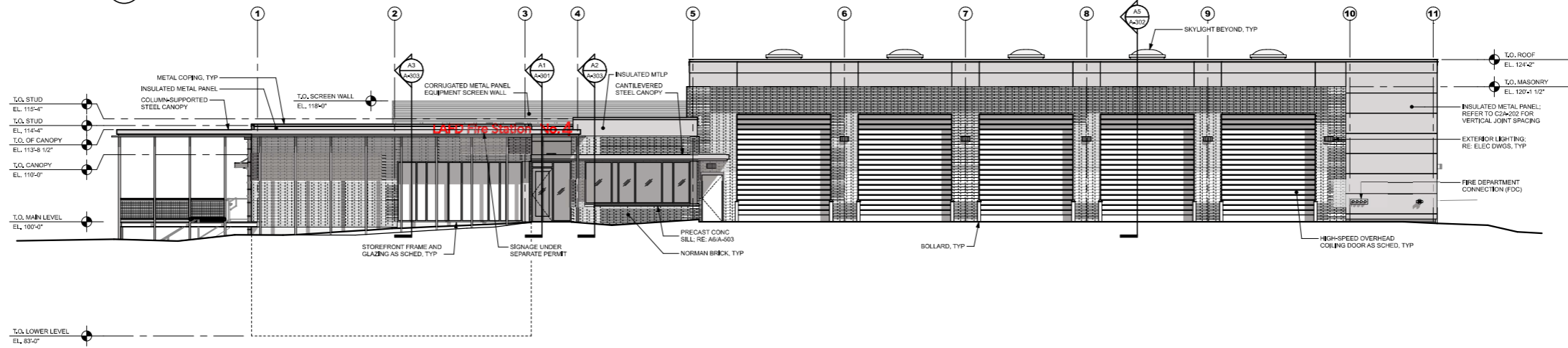
FIRE STATION 4
4401 DIAMOND DRIVE
LOS ALAMOS, NM 87545



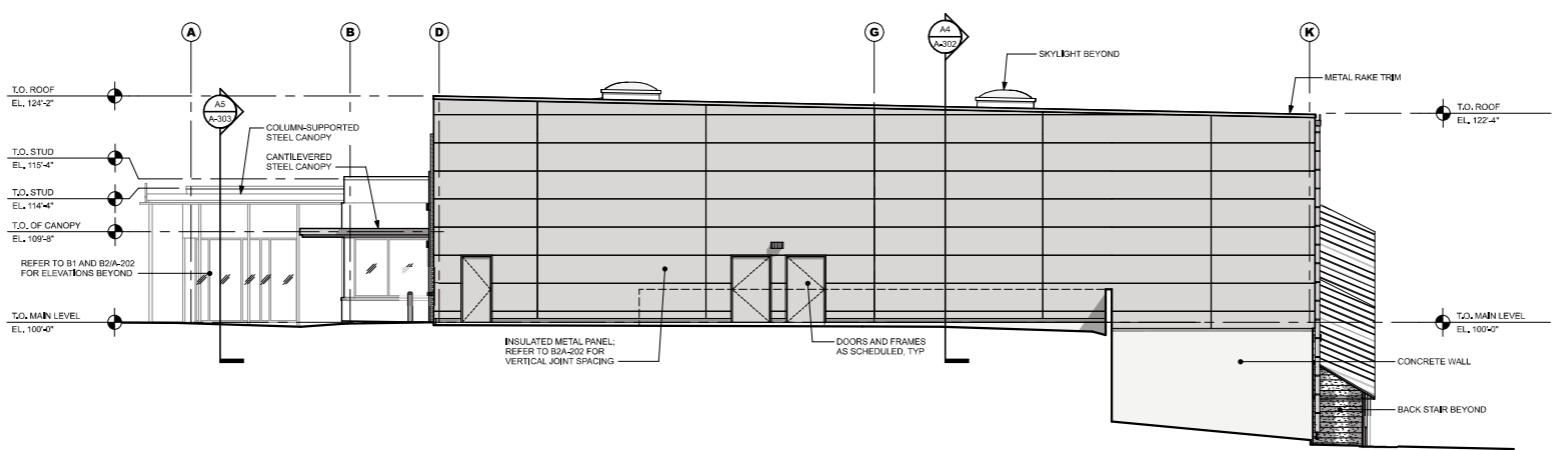
A1 CONSTRUCTION PLAN | LOWER LEVEL
SCALE: 1/8" = 1'-0"



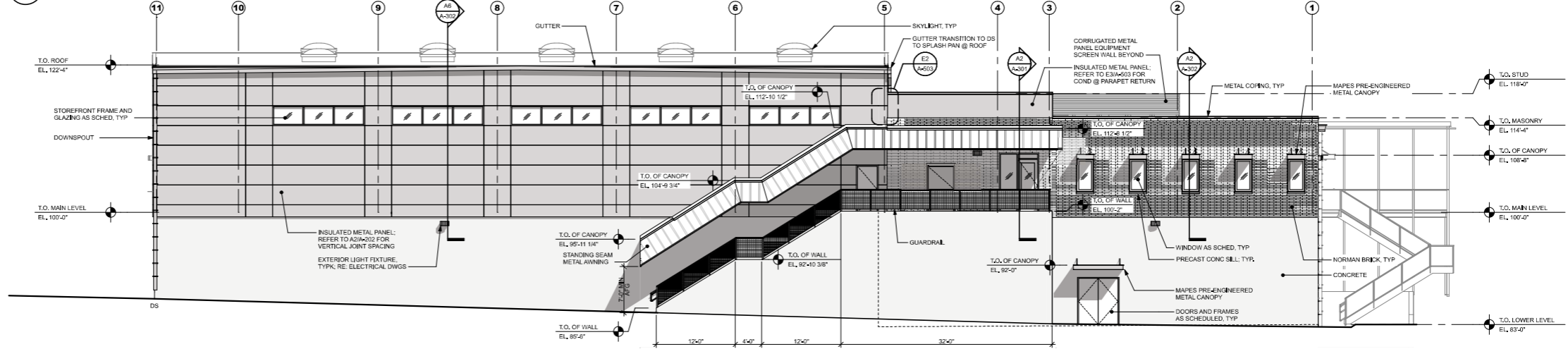
D2 WEST EXTERIOR ELEVATION
SCALE: 1/8" = 1'-0"



C2 SOUTH EXTERIOR ELEVATION
SCALE: 1/8" = 1'-0"



B2 EAST EXTERIOR ELEVATION
SCALE: 1/8" = 1'-0"



A2 NORTH EXTERIOR ELEVATION
SCALE: 1/8" = 1'-0"

EXTERIOR ELEVATION NOTES

1. BRICK TO BE NORMAN FACE BRICK Laid in 1/2 BOND PATTERN, UNO. LIGHT PEWTER (GRAN TEXTURE) BY SUMMIT BRICK, OR APPROVED EQUAL.
2. INSULATED METAL PANEL BASIS-OF-DESIGN: HORIZONTAL KS SERIES BY KINGSPAN
INTERIOR: NON-EMBOSSED
THICKNESS: 7"
WIDTH: 36" HORIZONTAL REVEAL 3/8"
COLOR: MEDIUM BRONZE METALLIC
3. PRE-FINISHED FLASHING, COPING, SCUPPERS, CONDUCTOR HEADS, AND DOWNSPOUTS SHALL BE KYNAR FINISH TO MATCH KINGSPAN MEDIUM BRONZE.
4. ALL EXTERIOR RAILINGS, HOLLOW METAL DOORS & FRAMES, AND EXPOSED STEEL SHALL BE PAINTED TO MATCH KINGSPAN MEDIUM BRONZE.
5. ALL EXPOSED PIPING AND CONDUIT SHALL BE PAINTED TO MATCH ADJACENT WALL MATERIAL.
6. PROVIDE SOLID BLOCKING IN WALL FOR BUILDING MOUNTED FIXTURES AND SIGNAGE AS REQUIRED. REFER TO ELECTRICAL DRAWINGS FOR BUILDING MOUNTED FIXTURE HEIGHTS AND LOCATIONS.
7. PRECAST CONCRETE COLOR TO BE SELECTED BY ARCHITECT FROM MFR STANDARD RANGE
8. MAPES CANOPIES ARE SUPER LUMIDECK FLAT SOFFIT WITH STANDARD 1" FASCIA, HANGER AND ROOF SUPPORTED; FASCIA DRAIN WITH SCUPPERS, COLOR: BRONZE BAKED ENAMEL.
9. STANDING SEAM METAL AWNING BASIS-OF-DESIGN: LAWRENCE FABRIC AND METAL STRUCTURES LFS-501P PRE-FINISHED TO MATCH FIRESTONE DARK BRONZE.
10. EQUIPMENT SCREEN PANELS SHALL BE ELEVATE UNA-CLAD OMEGA VR-CLASSIC 22 GA STL; KYNAR FINISH TO MATCH KINGSPAN MEDIUM BRONZE.
11. REFER TO BUILDING ELEVATIONS (SHEET A-202) FOR LOCATIONS OF PANEL JOINTS, CONTROL JOINTS, ADDITIONAL NOTES, AND WEBS.



vega

1658 cole blvd, g20
lakewood, co 80401
303.872.0487 x101
vegaarchitecture.com

FIRE STATION 4
4401 DIAMOND DRIVE
LOS ALAMOS, NM 87545

P24.0730 LAC,FS4

Issue
100% CONSTRUCTION DOCUMENTS
01.09.2028

EXTERIOR ELEVATIONS

A-201