



Bohannon  Huston

# Los Alamos County NM4 Crossing & Multi-Use Trail Improvements

December 5, 2024







LOS ALAMOS

Bohannon  Huston

# AGENDA

- Introductions
- Project Overview
- NM4 Crossing
- Pinon Park
- Piñon Elementary School Trail
- Schedule
- Next Steps



# INTRODUCTIONS



LOS ALAMOS

**Keith Wilson**

Project Manager

*Public Works Department*

**Bohannon**  **Huston**

**Jared Lee**

Engineering Principal

  
**PATHFINDER**  
Environmental

**Bill Dunn**

Environmental Lead



LOS ALAMOS

**Los Alamos County**  
**NM4 Crossing & Multi-Use Trail Improvements**

**Bohannon**  **Huston**





# PROJECT OVERVIEW



# PROJECT OVERVIEW

- Congestion Mitigation and Air Quality Improvement (CMAQ) funds from NMDOT
- Reconstruction of Multi-use trail along Eastbound NM4 with enhanced mid-block crossing (HAWK)
- Lane reduction on Westbound NM4 to accommodate new multi-use trail and enhance pedestrian safety
- Reconstruction of existing trails through Pinon Park, including connection to Sherwood Blvd and Sierra Vista Dr
- Construction of new trail along west side of Pinon Park
- Associated Drainage Improvements
- Possible reconstruction of trail from Pinon Park to Grand Canyon Dr. on west side of Pinon Elementary School.

## Benefits

- Safety
- Accessibility/Connectivity:
  - *Mirador Subdivision*
  - *Pinon Elementary*
  - *Pinon Park*
  - *Local businesses*
  - *Existing neighborhoods*
- Park Improvements



LOS ALAMOS

**Los Alamos County**  
**NM4 Crossing & Multi-Use Trail Improvements**

**Bohannon**  **Huston**

# VICINITY MAP

## Within the Project Area:

- NM4
- Piñon Park
- Piñon Elementary School



LOS ALAMOS

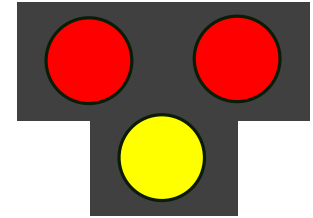
**Los Alamos County**  
**NM4 Crossing & Multi-Use Trail Improvements**

**Bohannon**  **Huston**



# PROJECT DETAILS

## NM4 CROSSING IMPROVEMENTS



- **Lane reduced from 2 to 1 lane Westbound along NM4** to allow space for a protected walking/shared use space along northside of NM4
- **Turning lane improvements** as needed along NM4
- **Extend 35MPH Speed Limit** along NM4 to the west of La Vista Dr
- **Addition of a mid-block crossing with a Pedestrian Hybrid Beacon (HAWK)** for pedestrians and students to cross NM4



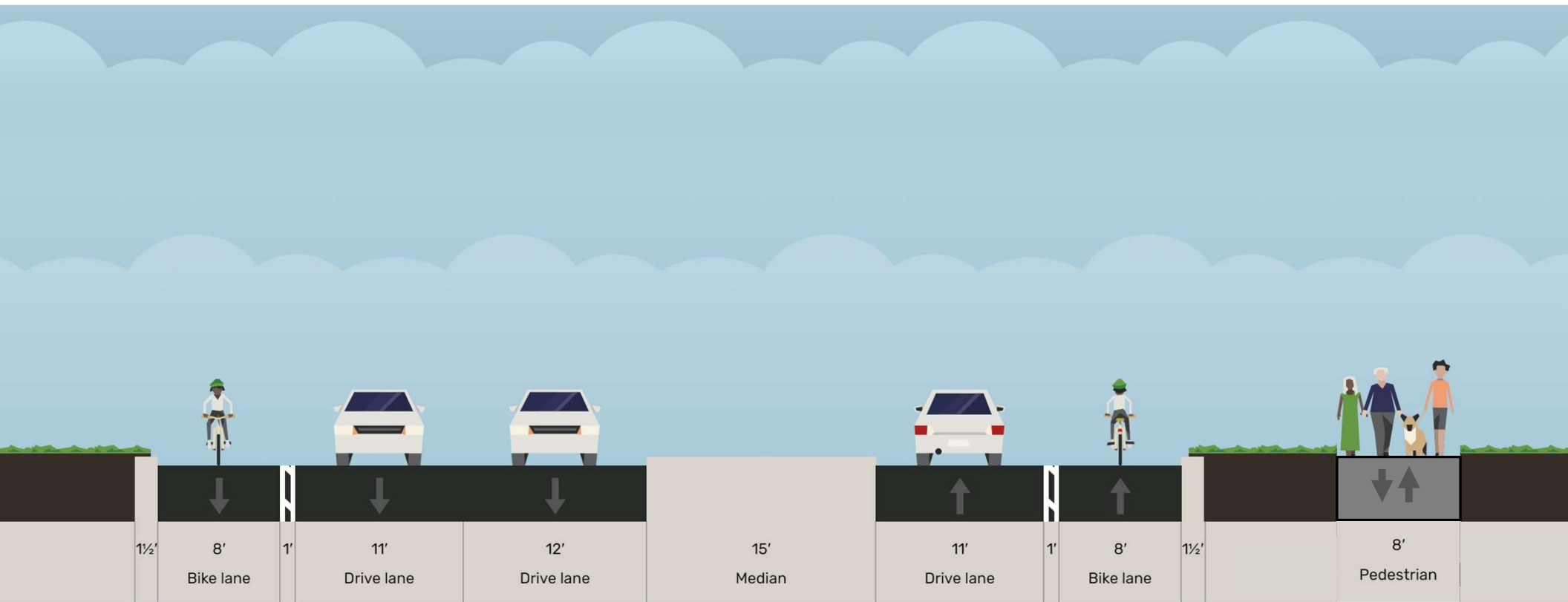
LOS ALAMOS

Los Alamos County  
NM4 Crossing & Multi-Use Trail Improvements

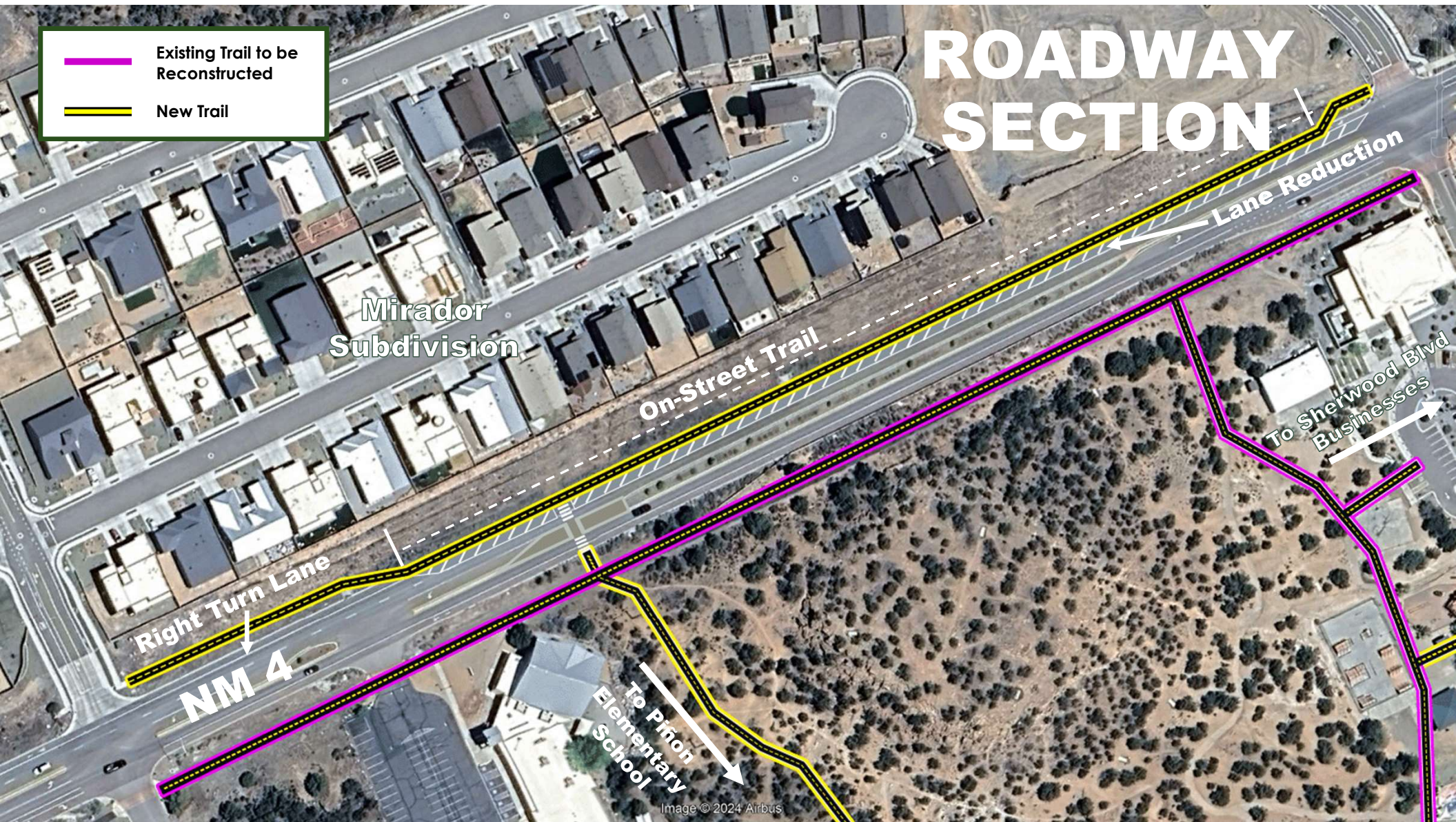
Bohannon & Huston

# NM4 Cross Section

## Existing Conditions

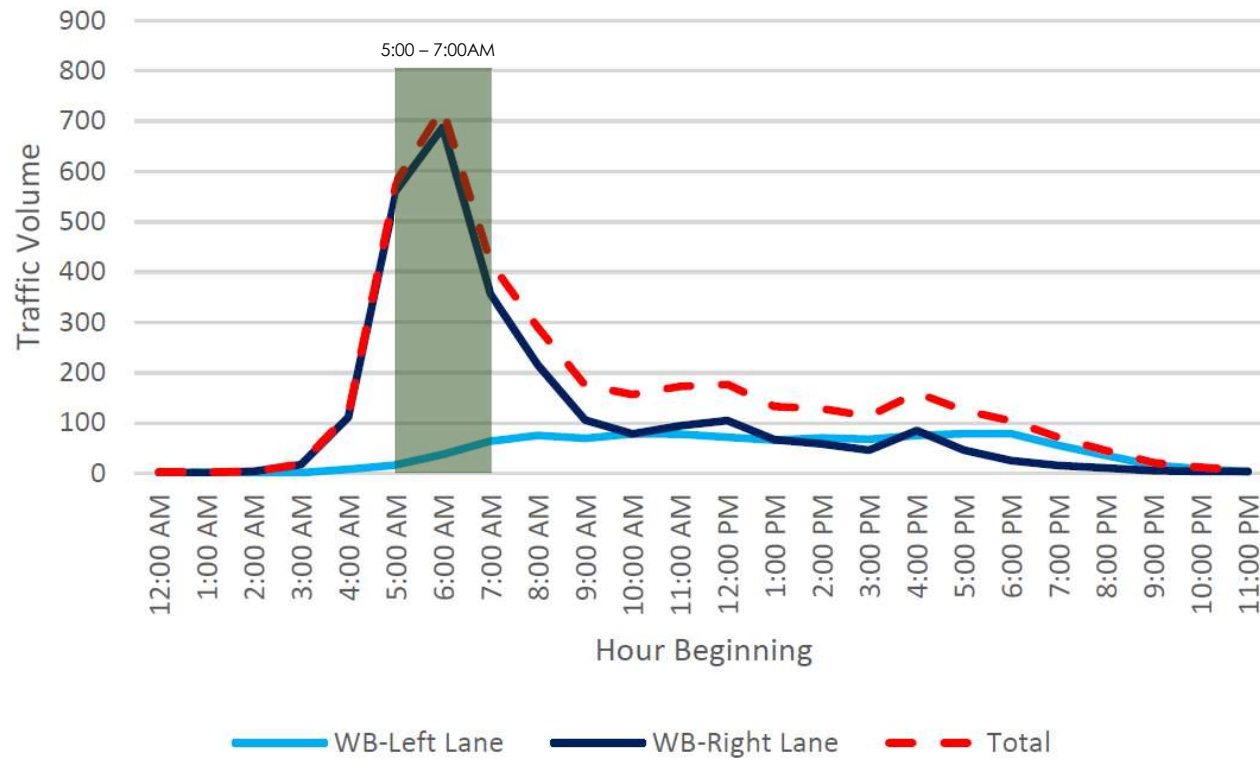








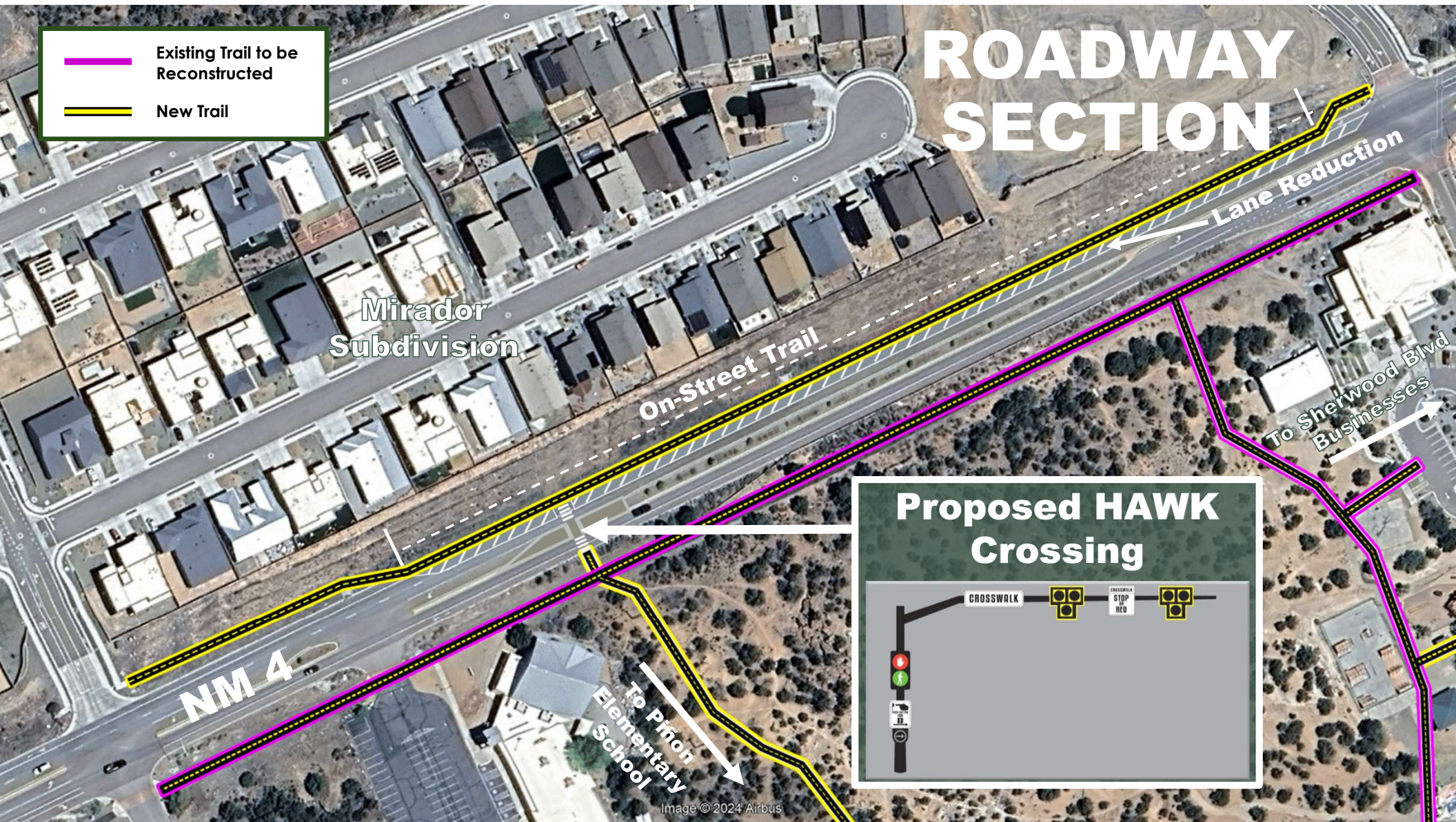
NM4 - Btwn Sherwood Blvd & La Vista Dr  
Westbound Lanes - Weekday Average  
Sept 16- Sept 19, 2024



LOS ALAMOS

Bohannon & Huston


















# HAWK SIGNALS



Source: The Land

PEDESTRIANS 		DRIVERS 	
SEE THIS	DO THIS	SEE THIS	DO THIS
	<b>PUSH THE BUTTON</b>		<b>DRIVE</b> Always look for people who plan to cross.
	<b>STOP &amp; WAIT</b> for the WALK signal.	 FLASHING	<b>SLOW DOWN</b> A person has activated the push button.
	<b>START CROSSING</b> Always watch for cars.		<b>PREPARE TO STOP</b>
	<b>FINISH CROSSING</b>		<b>STOP</b> for pedestrian. (As with any signal RED means STOP)
		 FLASHING	<b>STOP FIRST</b> Proceed with caution if no people are present.

Source: City of Phoenix, AZ



LOS ALAMOS

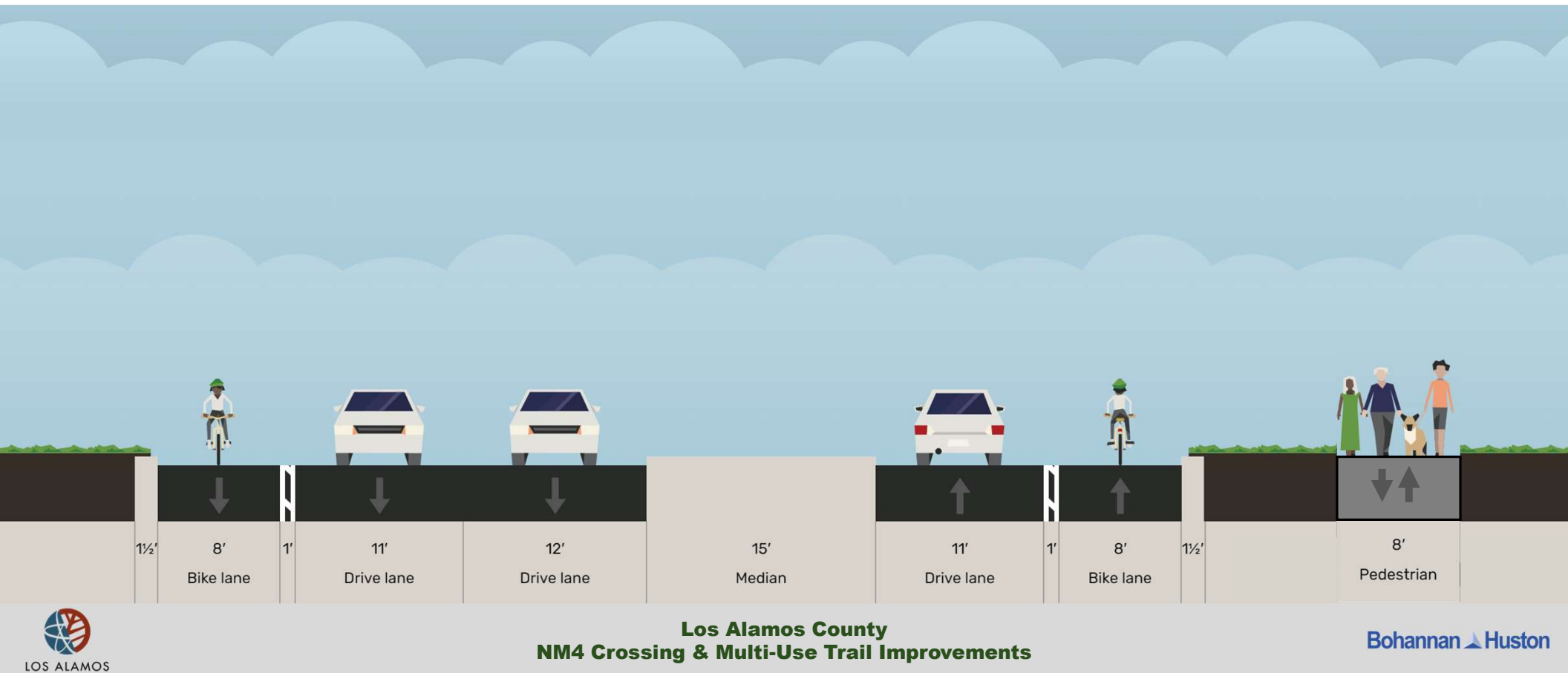
**Los Alamos County**  
**NM4 Crossing & Multi-Use Trail Improvements**

Bohannon  Huston



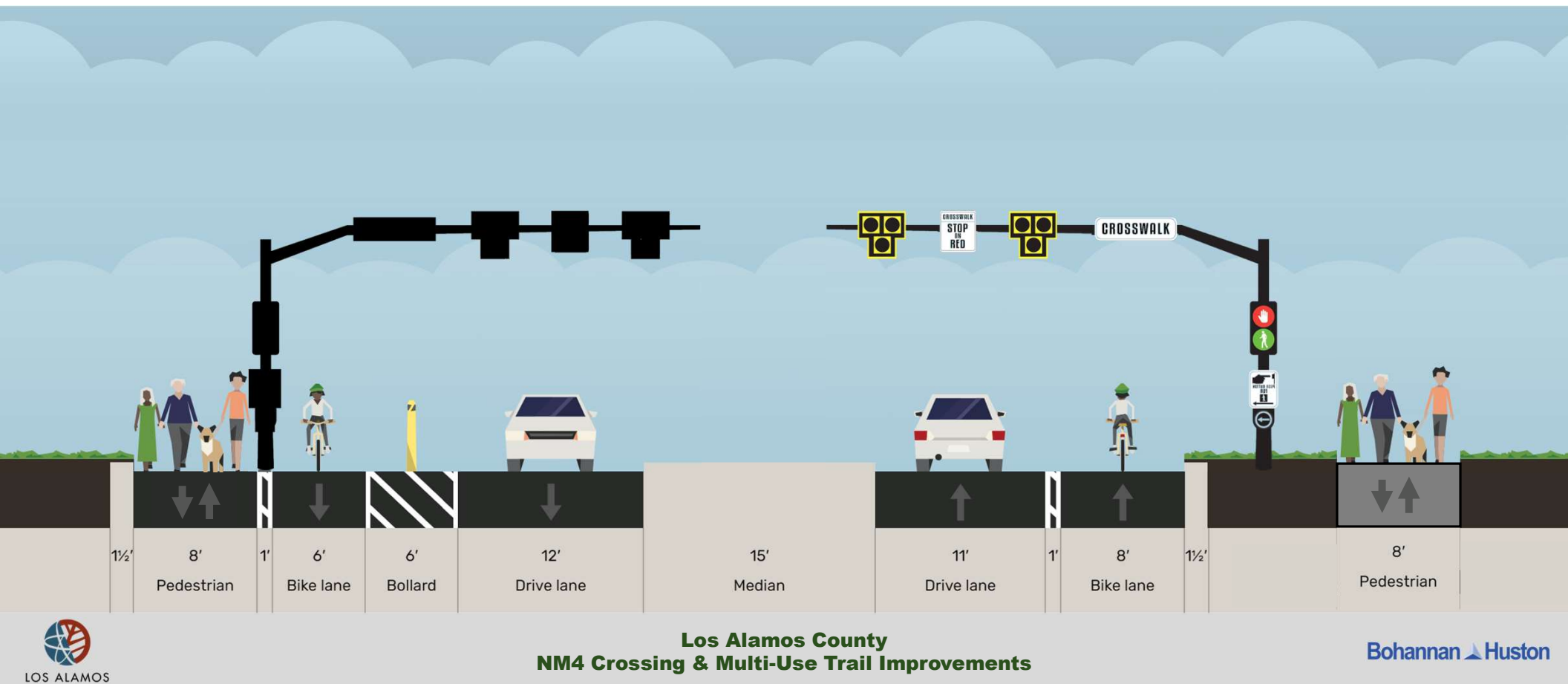
# POTENTIAL CROSS SECTIONS

## Existing Conditions



# POTENTIAL CROSS SECTIONS

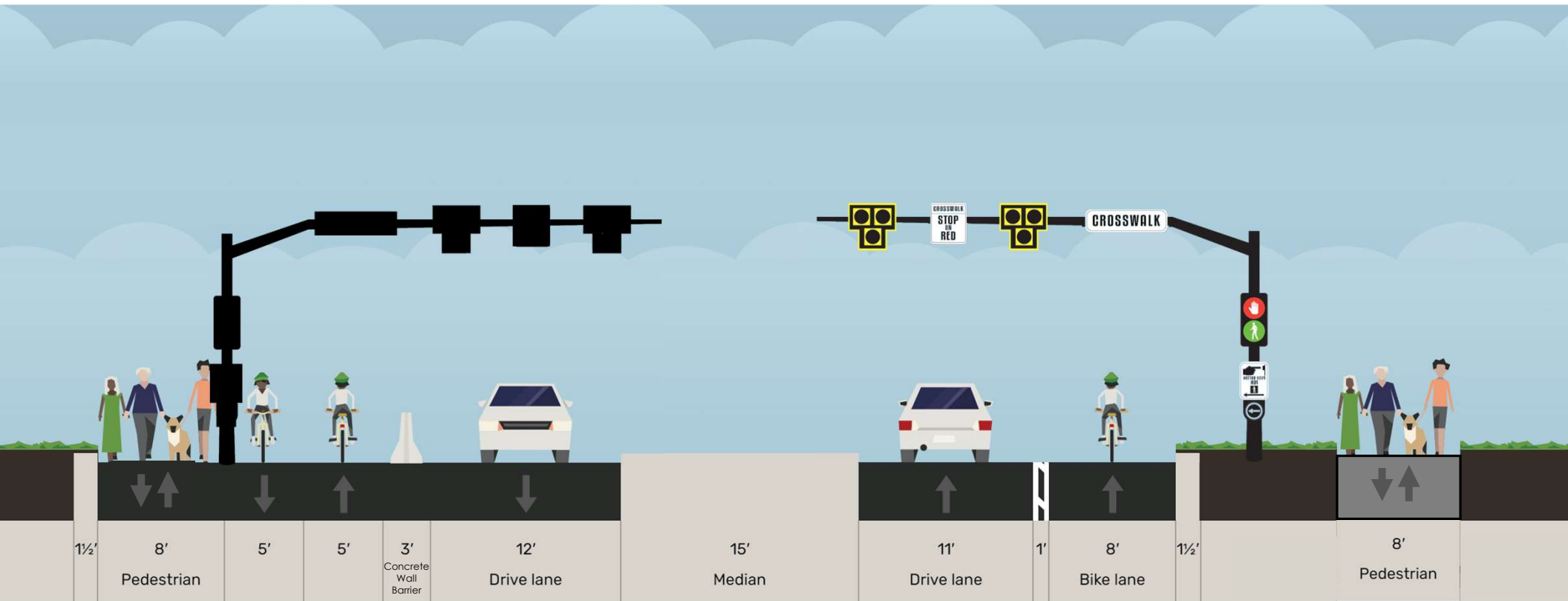
## Alternative 1





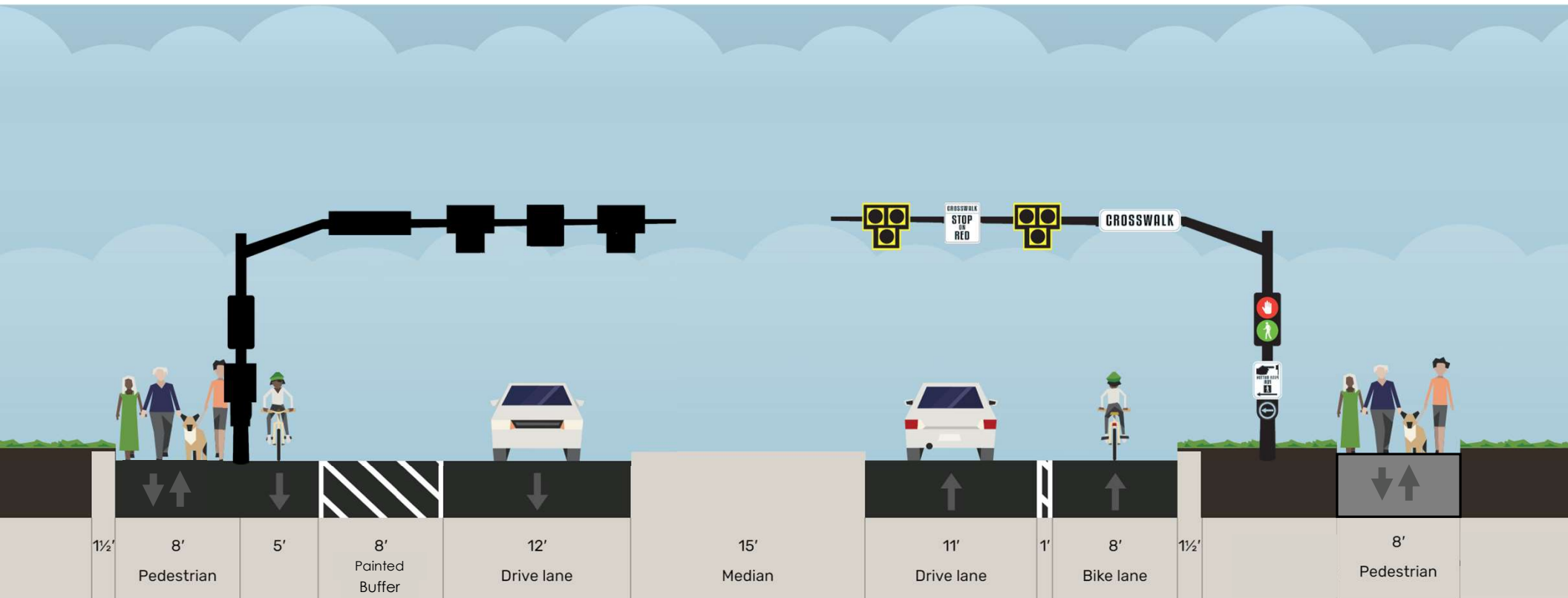
# POTENTIAL CROSS SECTIONS

## Alternative 2



# POTENTIAL CROSS SECTIONS

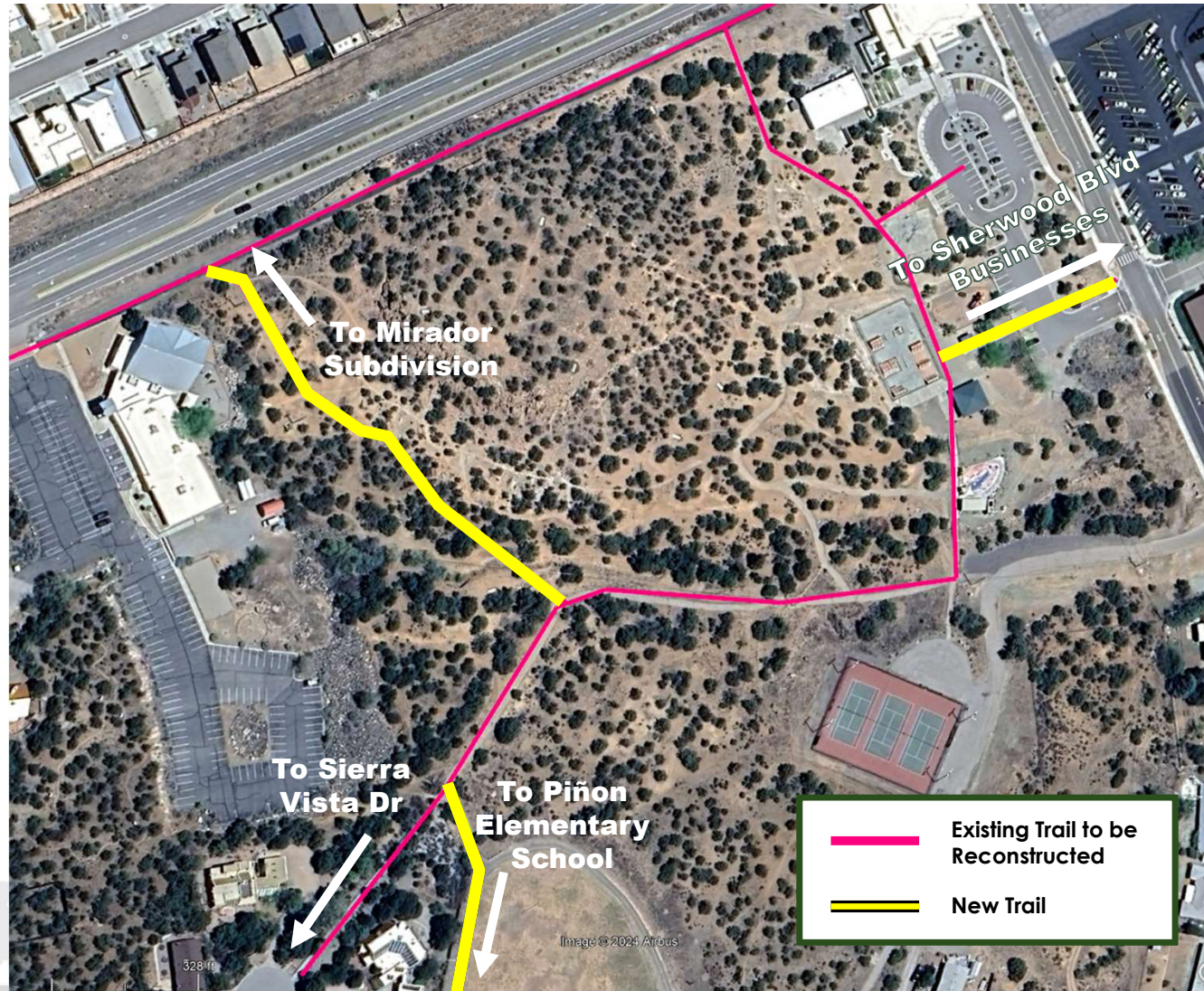
## Alternative 3





# PROJECT DETAILS PINON PARK

- **~3000 linear feet of existing trail reconstruction** to improve the existing trails conditions and accessibility
- **~750 linear feet of new trail** to connect NM4 through the park along the west side
- **Sidewalk connection to Sherwood Blvd** crossing from the skatepark/playground area
- **Sidewalk connection to Sierra Vista Dr**
- **Replacing the existing timber bridge** crossing with an improved solution
- **Drainage improvements** to key locations within the park and along the Pinon Park trails



**Los Alamos County  
NM4 Crossing & Multi-Use Trail Improvements**

**Bohannon & Huston**



LOS ALAMOS





# PIÑON PARK

## Existing Conditions



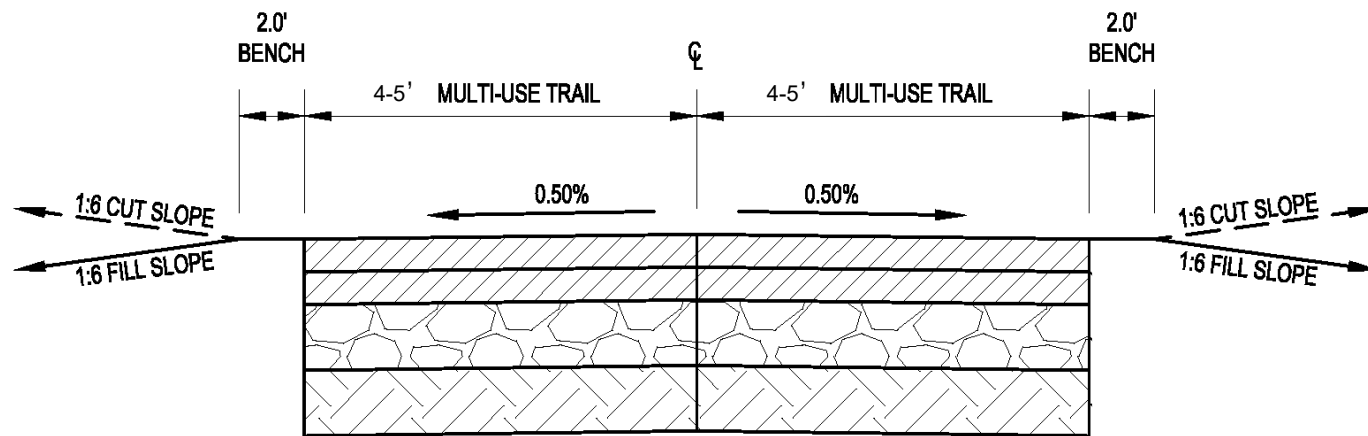
**Los Alamos County**  
**NM4 Crossing & Multi-Use Trail Improvements**

**Bohannon**  **Huston**



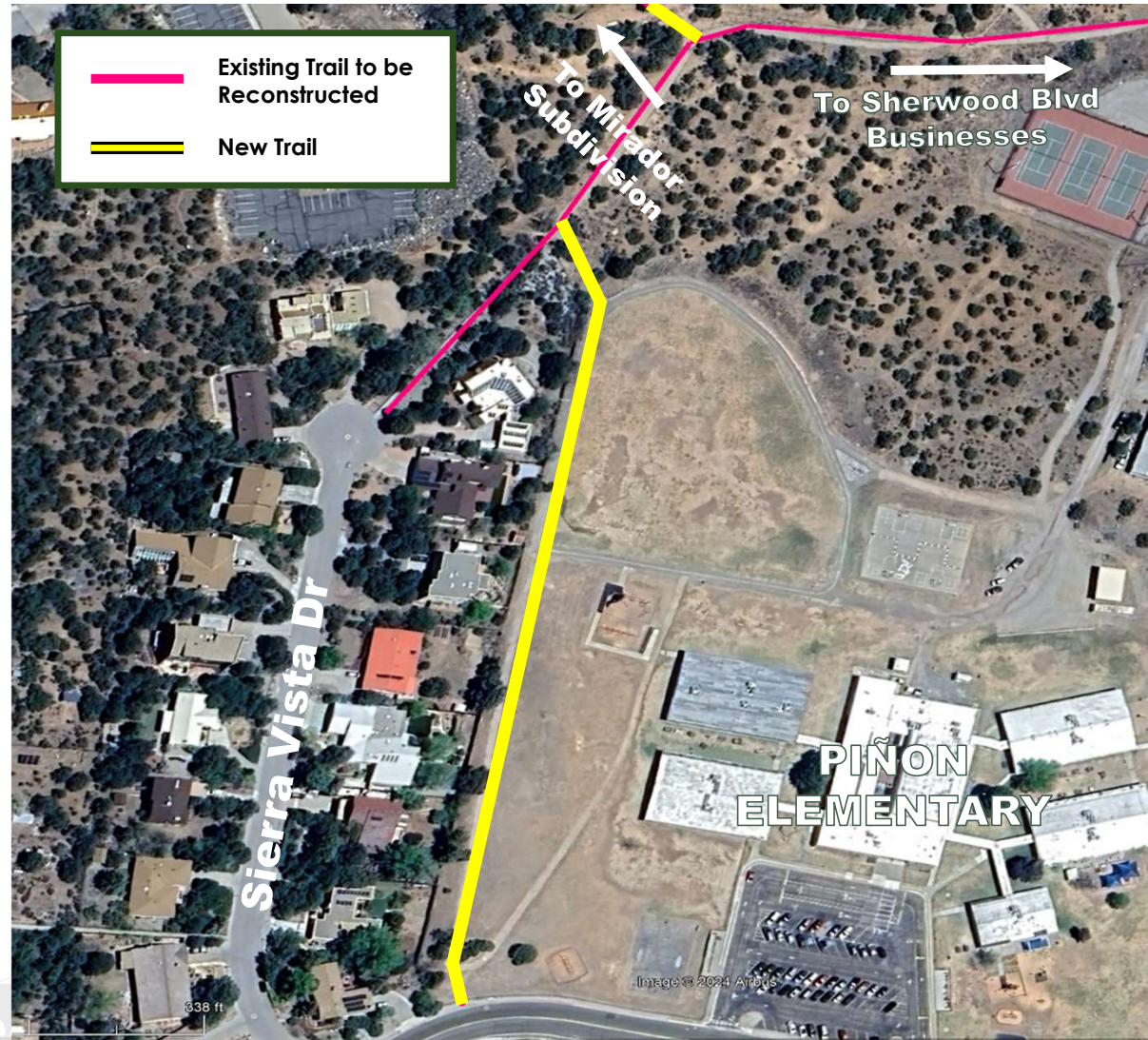
# PIÑON PARK

## 8-10' Trail Dimensions



## PROJECT DETAILS PIÑON ELEMENTARY TRAIL

- In **discussions with Los Alamos Public Schools to obtain an easement** to allow this trail section to be incorporated into the project.
- **~850 linear feet of existing trail reconstruction** along the west side of the school campus to improve the existing trail condition and accessibility. Proposed to be dedicated as a public access easement.
- **Extending the existing trail** to connect with the sidewalk on the northside of Grand Canyon Drive



LOS ALAMOS

Los Alamos County  
NM4 Crossing & Multi-Use Trail Improvements

Bohannon & Huston



A high-contrast photograph showing the lower legs and feet of several people walking across a crosswalk. The crosswalk is marked with white stripes on a dark asphalt surface. Long, dark shadows are cast across the stripes, indicating bright, low-angle sunlight. The text "NEXT STEPS" is overlaid in the upper right quadrant in a bold, white, sans-serif font.

# NEXT STEPS

# PROJECT SCHEDULE

**Public Meeting 1:**  
November 7, 2024

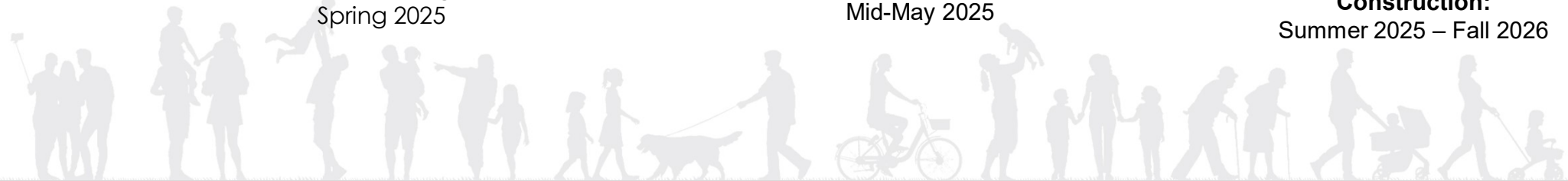
**Final Design (90%):**  
Early May 2025

**Approved Design (100%):**  
Summer 2025

**Public Meeting 2:**  
Spring 2025

**Public Meeting 3:**  
Mid-May 2025

**Construction:**  
Summer 2025 – Fall 2026



**Los Alamos County**  
**NM4 Crossing & Multi-Use Trail Improvements**

**Bohannon**  **Huston**



# Comments/Contacts

Please submit all comments in writing by **COB December 20** to:

Keith Wilson

Public Works Department

1000 Central Avenue, Suite 160

Los Alamos, NM 87544

or

Email: [keith.wilson@lacnm.us](mailto:keith.wilson@lacnm.us)

or

Phone: (505)663-1757



# QUESTIONS?





# Thank You!

The Public Works Department staff thanks you for taking time out of your busy schedule to participate in the design and construction of this important public project!

