



County of Los Alamos

BCC Meeting Minutes

Parks and Recreation Board

1000 Central Avenue
Los Alamos, NM 87544

Chair, Brian Watkins; Vice-Chair, Jerry Cowan; Jacob AlderseBaes; Paula Knepper; George Marsden; Summer Schaufler; and Ian Zollinger, Members

Thursday, April 10, 2025

5:30 PM

1000 Central Avenue
Room 110

Public Participation: in person or <https://zoom.us/j/97013443707>

Phone one-tap:

+16694449171,,97013443707# US

+16699006833,,97013443707# US (San Jose)

Join via audio:

+1 669 444 9171 US

+1 669 900 6833 US (San Jose)

1. CALL TO ORDER

The meeting was called to order at 5:31 PM by Chair Watkins.

Present 5 - Chair Watkins, Vice-Chair Cowan, Member Knepper, Member Schaufler, and Chair Zollinger

Absent 2 - Chair AlderseBaes and Chair Marsden

Remote 0 -

2. PUBLIC COMMENT

Michael Dempsey made a public comment regarding the use of astroturf and provided the Board with a handout for their consideration.

3. BUSINESS

[20018-25](#) Approval of Minutes from the March 13, 2025 Meeting

Attachments: [A - Minutes from the March 13, 2025 Meeting](#)

A motion was made by Vice-Chair Cowan, seconded by Member Zollinger, that this item be approved. This motion passed with the 4-0.

Member Schaufler arrived after the Approval of the Minutes.

PRESENTATIONS, PROCLAMATIONS AND RECOGNITIONS

20022-25 Los Alamos Ice Rink Shade Structure Presentation

Attachments: [A - Ice Rink Shade Structure Presentation](#)
[B - Survey Results for Ice Rink Shade Structure](#)

Miguel Jimenez, Public Works Senior Project Manager, provided a presentation on the Ice Rink shade structure.

Public Comment made by Joe Artnak, Chantelle Hanson, Stacy Meyers, Anna Alvez, Marissa Poppell, Tom Roman, Ms. Smith, Victor Tanuz, Phoebe Sanderbeck, Addie Voorhees, Rachel Adler, Kendra Nakaoka, Stacy, and Michael Dempsey in support of the Ice Rink shade structure.

4. BOARD/STAFF COMMUNICATIONS

Topic: Council Communications

Note: Due to an oversight, Council Communications was not listed on the meeting agenda. Therefore, it has been included under the Board/Staff Reports section.

Summary:

Councilor Reagor shared updates on behalf of the County Council.

20019-25 Chairman's Report

Chair Watkins provided the Chairman's Report.

20020-25 Staff Report

Wendy Parker, Parks & Open Space Superintendent, provided the Parks staff report and Katherine Hudspeth, Recreation Superintendent, provided the Recreation staff report.

20021-25 Work Group and Task Force Assignments and Updates

Attachments: [A - April Report for Bike Park Working Group](#)

Vice-Chair Cowan provided updates on Bike Park Working Group and the Equine & Livestock Working Group.

6. PREVIEW OF NEXT MEETING

Review of ice rink shade structure survey results and add related action item.
Possible action item for Bike Park Working Group Survey.

Public Comment was made by Michael Dempsey regarding astroturf.

7. ADJOURNMENT

Chair Watkins adjourned the meeting at 6:56 PM.

If you are an individual with a disability who is in need of a reader, amplifier, qualified sign language interpreter, or any other form of auxiliary aid or service to attend or participate in the hearing or meeting, please contact the County Human Resources Division at 505-662-8040 at least one week prior to the meeting or as soon as possible.

Public documents, including the agenda and minutes can be provided in various accessible formats. Please contact the Community Services Department at 505-662-8241 if a summary or other type of accessible format is needed.

11APR2025

Received
4/10/25 @
PRB mts.

Hello My name is Michael Dempsey.
I have lived in White Rock for 31 years.

Only very recently I learned about the plan to
use astroturf n some of the fields.

I am registering my opposition to the horrible
scheme.

There are many reasons to oppose astroturf
and promote natural grass.

GRASS: The surface temperature on a sunny
day will be 10F cooler that the air due to
transpiration of water into the air.

This makes it more comfortable for the users.

AstroTurf: is normally 20F above ambient air
temperature and can get as hot as concrete
pavement, sometimes in excess excess of
120F.

GRASS: If you don't know it, GRASS is a plant which takes Carbon Dioxide (CO₂) from the air and sequesters it in the earth. If you are concerned about CO₂. The treated sewer water at the new sewage plant in White Rock produces Class 1A effluent. Some people in Palo Alto CA have Class 1A effluent as their drinking water. What nobody talks about is that 1A effluent still has forever chemical every anti-represent, anti-cholesterol and every sort of medicine in it that people in White Rock take. The water needs to be spread on the earth to give real time to break down.

We do not need to do this in Los Alamos County.

Astro turf is made of OIL, and the rubber granular will contribute to the micro plastics in the environment and you BODY.

Before three ball fields in White Rock get astroturfed plant make sure there is an eco disposal pathway. If you noticed the pile of astroturf that sat unpicked up at the ski hill during movie making, it was covered in mud and weighed an estimated 10 times the weight of used astro turf. Where did it go? How much space did it take up? How many square yards of astro turf planned?

The county has already spent \$305K on just a study, How much more will this drain our resource and MONEY.

I would much rather have some of the roads REPAIRED IN THE COUNTY. I am so glad that the new pipeline to WR is near completion. Fixing the road and putting new service line is much more important. that creating a GIANT PILE ON Astro turf into an ecological nightmare

Mike Dempsey
300 Connie Ave.

Los Alamos Ice Rink Shade Structure Evaluation

Public Meeting

Parks and Recreation Board
April 10, 2025

Incorporated County of Los Alamos

Project Team

- Brendan Tuning – Ice Rink Manager
- Katherine Hudspeth – Recreation Superintendent
- John McNamara – Design Professional, Wilson & Co.
- Miguel Jimenez – Project Manager
- Julie Williams-Hill – Public Relations Manager
- Eric Martinez – Public Works Director
- Cory Styron – Community Services Director

Background

- Funds FY 2025 to assess possibility of shade structure
- On-call consultant, Wilson & Co., assisting this process
- Listening sessions LAHA and LADD
- First public meeting and on-line survey, January 9, 2025

Objective

- Results of the first survey
- Cover structure types
- Feasible cover structure for Ice Rink
- Second online survey
- Outlook for third Public Meeting

First Online Survey

- Perspectives on shade structure
- Formulated with input from listening sessions
- Fourteen days (January 9 – 25, 2025)
- 575 participants
 - 73% favor a shade structure
 - 93% County residents

Shade Structure Perspectives

Survey says: Cover Structure

- Cover structure must protect skating surface and skaters from: sun , rain, and snow exposure.
- Full floor, bleachers, and team boxes coverage (32%)
- Permanent (36%) & retractable structure (35%)
- Visual appearance somewhat important (32%) or neutral (29%)
- Ease of maintenance is very important (59%)

Cover Structure Alternatives

- Wilson & Co. identified 11 alternatives
- Full, partial, and retractable alternatives considered
- Custom and pre-engineered structures considered
- Steel, timber & hybrid structures considered
- Five structures already used in outdoor ice rinks
- Six structures potentially adaptable to ice rinks

Solar Study Model

- Determine number of sun exposure hours per day
- Wilson & Co. created a sun exposure model
 - Site visit
 - Record drawings
 - Topography data from USGS
 - Canyon wall
 - Full, partial and no cover cases
- Four season solar exposure simulations



Sun exposure Autumn equinox

Solar Study Results

Partial cover protects ice sheet from sun during the Autumn.
It will not keep snow or rain off the ice.

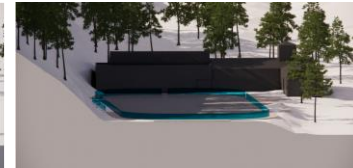
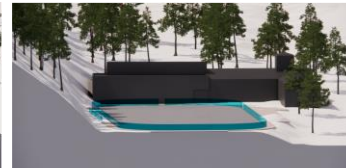
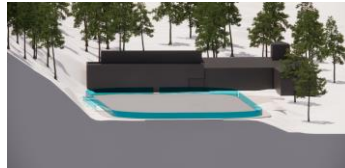
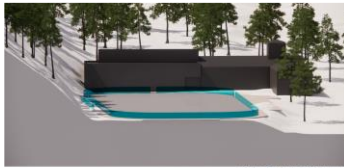
Spring
equinox (8h)

Summer
solstice (10h)

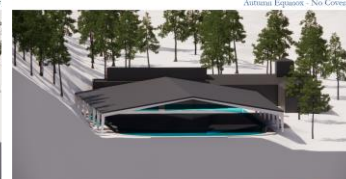
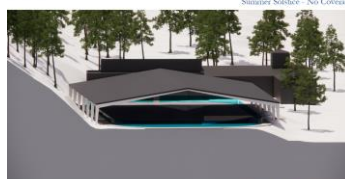
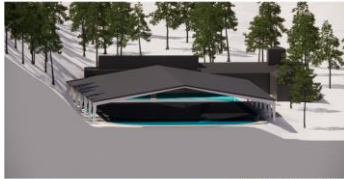
Autum
equinox (8h)

Winter
solstice (4h)

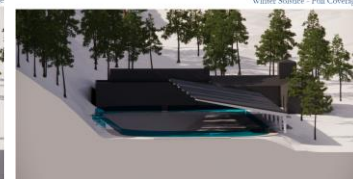
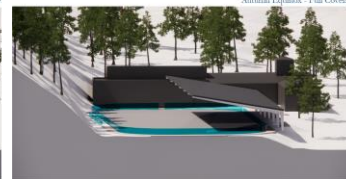
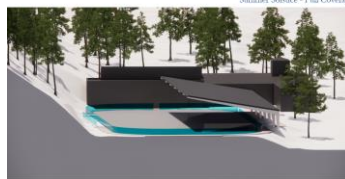
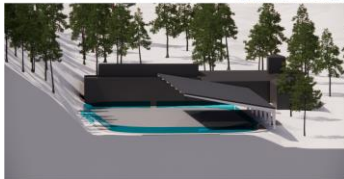
No cover



Full cover



Partial
cover



Full Coverage Structures

Custom options *: Balanced aesthetics & function

- Floor only or floor plus bleachers and player boxes
- Effective all-season protection from sun
- Effective protection from rain, and snow
- Supports wind and snow loads
- **Opinion of probable cost: \$4 Million to \$6 Million**

Haendel Park Skating Rink, QC
Nordic Structures



Glue-lam timber
High effort & cost to maintain

St. Louis Park Rec. Center, MN
RSP Arch.



Steel / aluminum / glue-lam / fabric
Even greater effort & cost to maintain

Parc des Éperviers, QC
Poirier Fontaine Architects Inc.



Steel & rigid roof decking
Least effort & cost to maintain

* Representative examples

Full Coverage Structures (cont.)

Pre-engineered options *: Durable & cost-conscious option

- Same functionality as the custom options
- Steel structures and decking composites
- Architectural finish can enhance aesthetics
- Requires least effort & cost to maintain
- Opinion of probable cost: \$900,000 to \$1.5 Million (about 37% of custom option)

Rendering
Sim - Steel Buildings & Dry Kilns
Steelway building systems



* Representative examples

Sun Peak Centre, BC
MAD Arc



Partial Coverage Structures

Custom option only*: Unobstructed views & limited protection against elements

- Steel struct. & tensile fabric (light frames)
- Helps with ice melting situation on the north edge of the rink
- Opinion of probable cost: \$1.7 Million to \$2.3 Million
- No protection from rain or snow
- Vulnerable to heavy snow and wind loads
- Cantilevered structure / larger footings
- Fabric wears over time, repairs & replacement increase efforts and cost to maintain
- Reduced cost effectiveness compared to pre-engineered full cover structures

Grandstand cover Villeteuse, FR
SMC2 Sport & leisure construction



Sagebrush Community Church
Albuquerque, NM



West Mesa Park and Ride
Mesa, AZ



* Representative examples

Retractable Structures

Custom option only*: Seasonal adjustable & most expensive option

At least 3.3 times the cost of the pre-engineered full cover structure

- Full cover
- Rigid or canvas decking
- Complex mechanisms expensive design & construction
- High effort & cost to maintain
- Opinion of probable cost: \$4 Million to \$6 Million (fabric covering)
- Opinion of probable cost: \$5 Million to \$7 Million (rigid covering)

Retractable rigid roof
Roll-A-Cover Int'l -



Retractable awnings



Vulnerable to heavy snow and wind loads
Challenging to manage snow melt and rainwater running down the cover

* Representative examples

Additional Considerations

Site work and footings will require additional engineering analysis

- Limited space available in the parcel
- Varying site elevation contours
- Proximity to canyon wall
- Adjacent to DOE property



Cover Structure Recommendation

Pre-engineered full cover structure

Most cost-effective structure

- Complete functionality
- Steel structure
- Rigid roof decking
- Gable or mono-slope frame
- OPC: \$900,000 to \$1.5 Million



Gable frame



Mono-slope frame

Third Public Meeting

- Inform County Council on:
 - Public Outreach Process
 - Community perspectives on cover structure
 - Community preferences on structure frame (Gable or mono-sloped)
 - Opinion of probable cost
 - Obtain direction moving forward
- May 20, 2025, at Council Chambers

Main Takeaways

- First survey says cover structure
- Budget & maintenance limit the range of feasible cover options
- Full cover pre-engineered steel structure w/rigid roof decking
- Second on-line survey opens tonight (14 days)
- Still at planning/conceptual phase
- Moving forward requires County Council approval

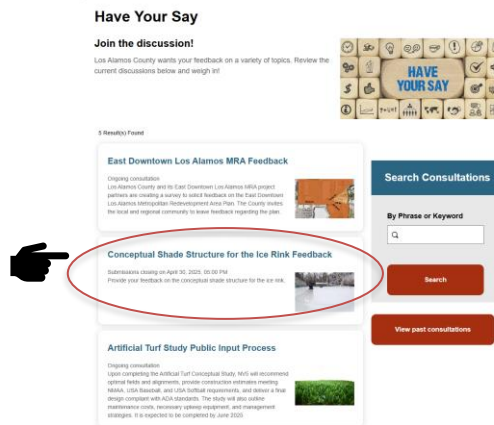
Thank you!

Take the survey



- Open from today until April 24
- Approximately 2 minutes
- <https://lacnm.com/ShadeStructure-Survey2>

Have your say



<https://www.losalamosnm.us/Have-Your-Say>

Contact us

Los Alamos County
Public Works Department



(505)-662-8150



lacpw@lacnm.us