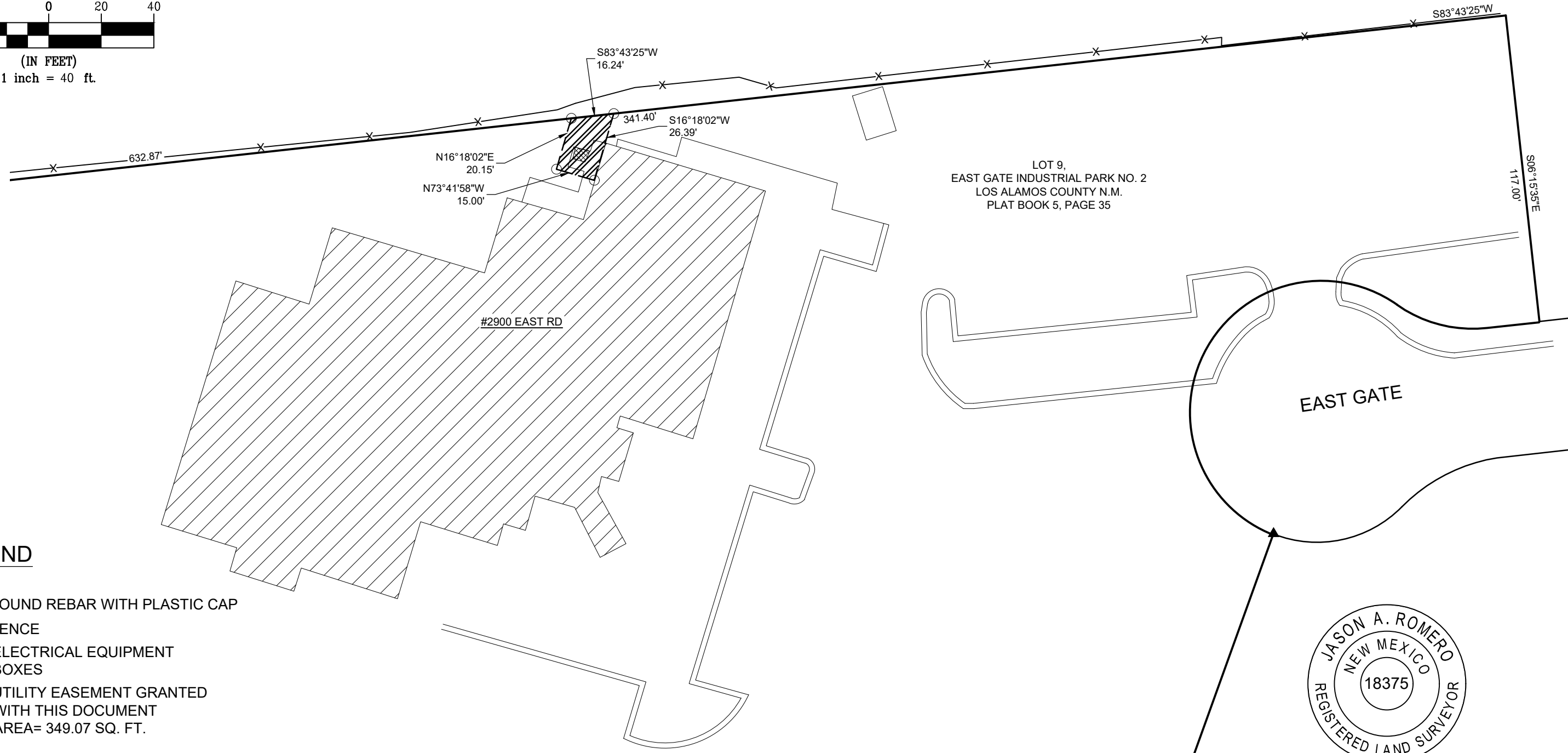
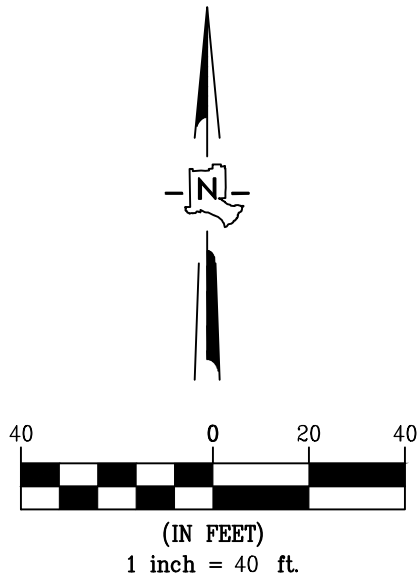


EXHIBIT A SHOWING GRANT OF UTILITY
EASEMENT ON LOT 9 OF EAST GATE
INDUSTRIAL PARK FROM CC&F LOS
ALAMOS INVESTMENT COMPANY TO
LOS ALAMOS COUNTY



LEGEND

- ▲ FOUND REBAR WITH PLASTIC CAP
- X— FENCE
- ▨ ELECTRICAL EQUIPMENT BOXES
- ▧ UTILITY EASEMENT GRANTED WITH THIS DOCUMENT
AREA= 349.07 SQ. FT.

