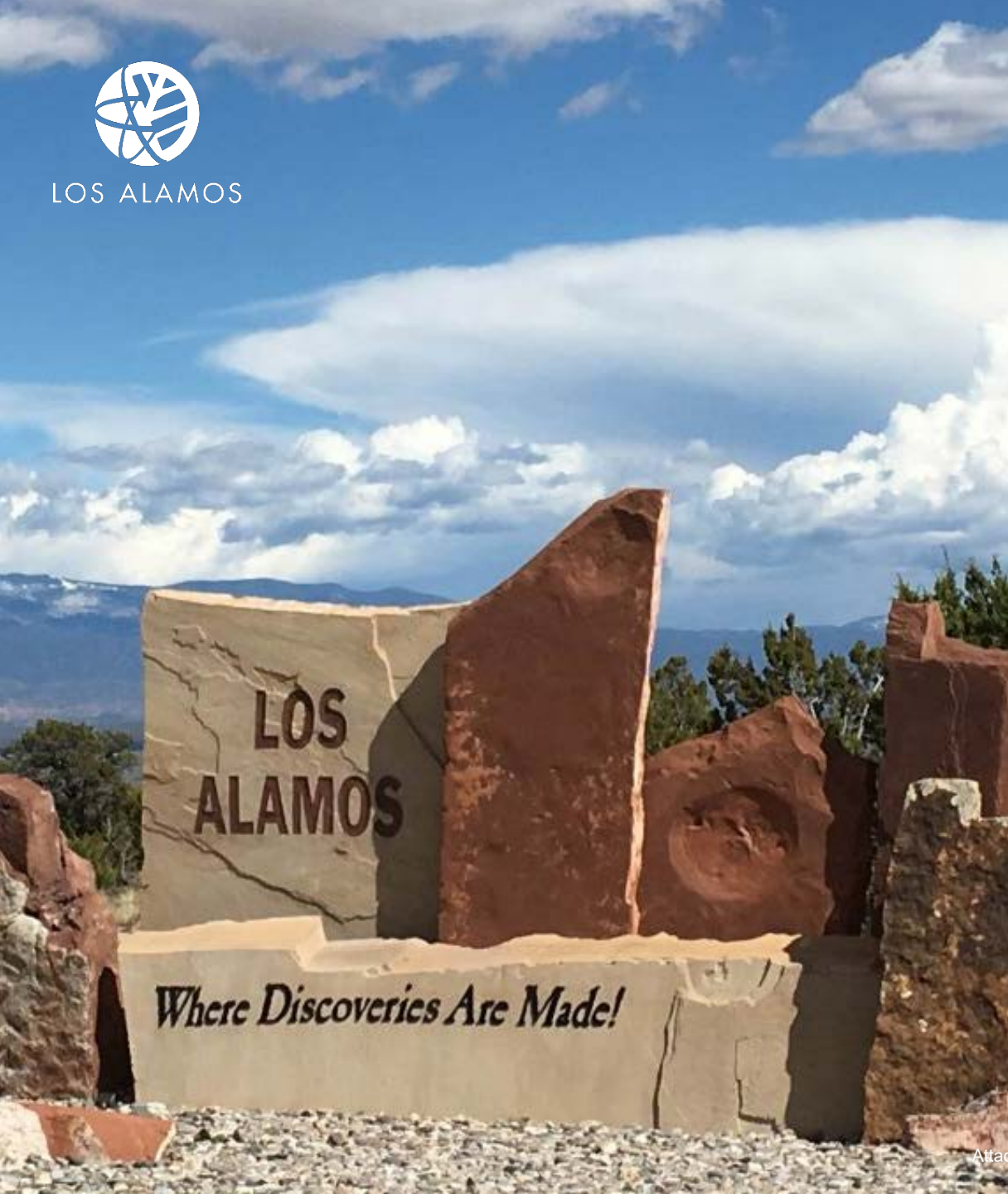




LOS ALAMOS



Transportation Board – Project Update 2 May 2024

Initial Evaluation of Transit Center Sites in Los Alamos and White Rock



LOS ALAMOS

Agenda

1. Introduction
2. Programming & Community Survey
3. Site Screening
4. Next Steps



LOS ALAMOS

Introduction



LOS ALAMOS

Introduction

The Project

Transit Center Goals

- Enhance transit services for commuters and residents
- Accommodate future transit expansion
- Promote economic development

Objective

- Evaluate sites for new transit facilities:
 - **Main Transit Center** (Los Alamos)
 - **Auxiliary Transit Center** (White Rock)

Staff

- Keith Wilson – Project Manager, Los Alamos County
- Barb Berastegui – Project Manager, Stantec
- Rhonda Bell – Project Planner, Stantec



LOS ALAMOS

Introduction

Who's Weighed In

- Los Alamos County, including Atomic City Transit (ACT)
- LANL
- NMDOT
- NCRTD
- General Public



LOS ALAMOS

Introduction

Where We Are

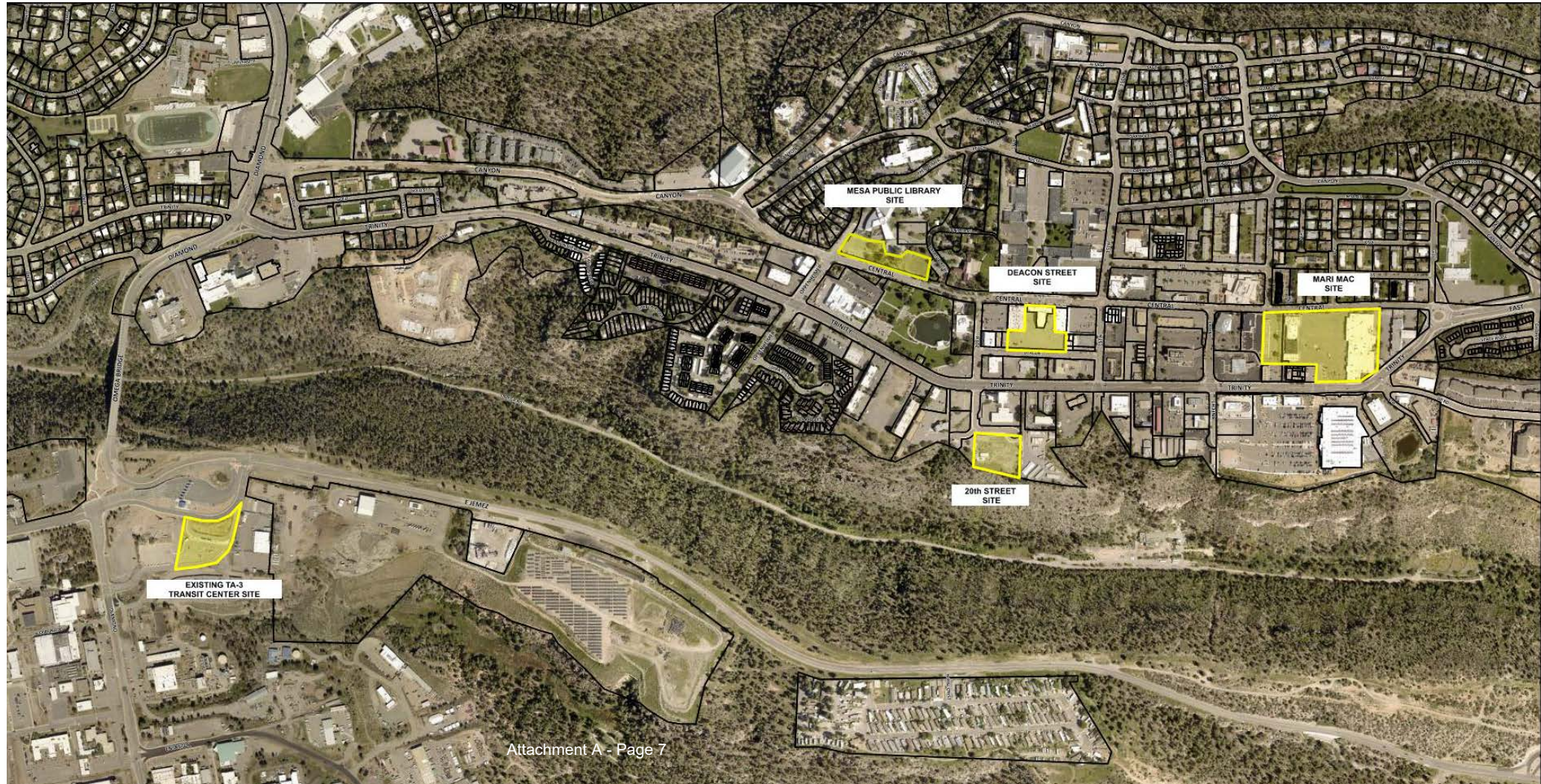
Process

1. Site visits
 2. Programming & Community survey
 - 3. Site Evaluation**
 4. Financing Scenarios
 5. Economic Impact Analysis
- *Future: Additional Design & Analysis (2 sites max)*



Main Transit Center Sites

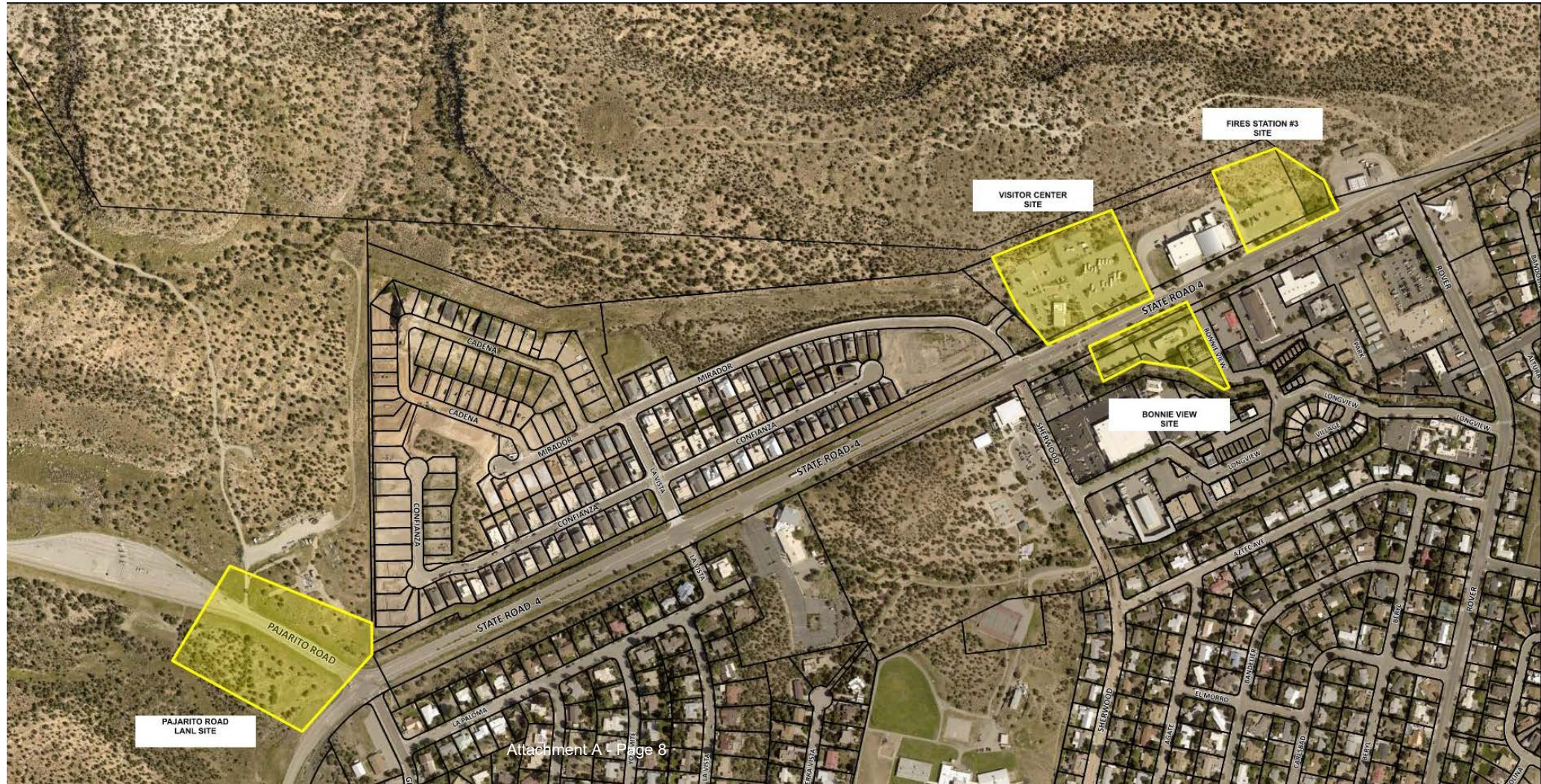
- TA-3 (LANL)
- Mesa Public Library
- Deacon Street
- 20th Street
- Mari Mac





Auxiliary Transit Center Sites

- Pajarito Rd (LANL)
- Visitor Center
- Bonnie View
- Fire Station #3





LOS ALAMOS

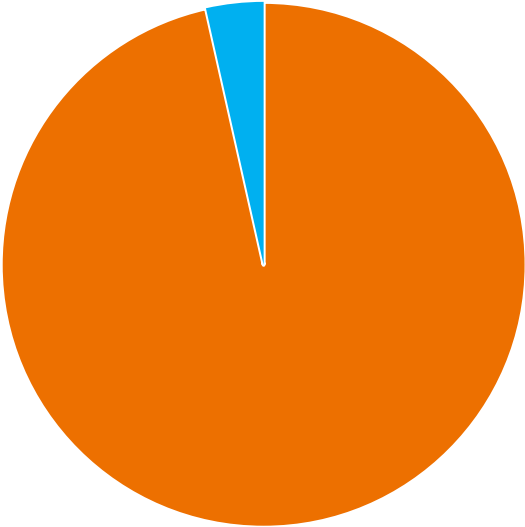
Programming & Community Survey

Who Answered?

Community Survey

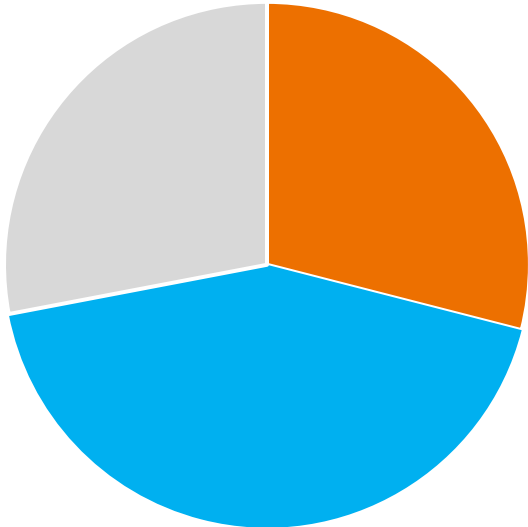
Dec 1 – 22, 2023 795 responses

Responses



■ Online ■ Paper

Transit Use



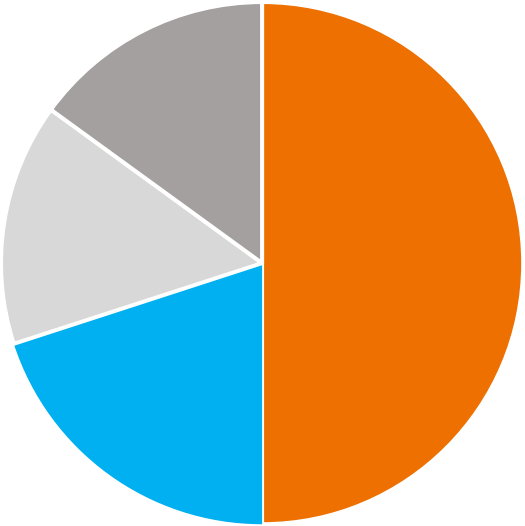
■ Daily / Weekly ■ Monthly / Yearly ■ Not at All

Destinations

Community Survey

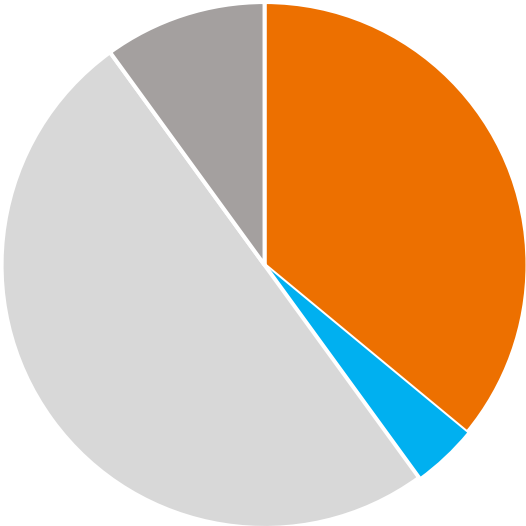
Dec 1 – 22, 2023 795 responses

Trip Start



■ LA Townsite ■ White Rock ■ Santa Fe ■ Other

Trip End



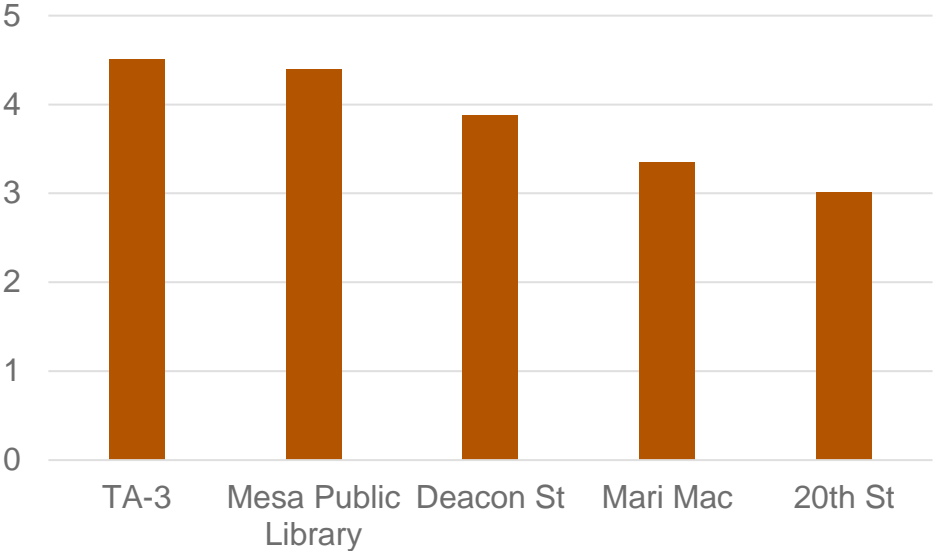
■ LA Townsite ■ White Rock ■ LANL ■ Other

Site Ranking

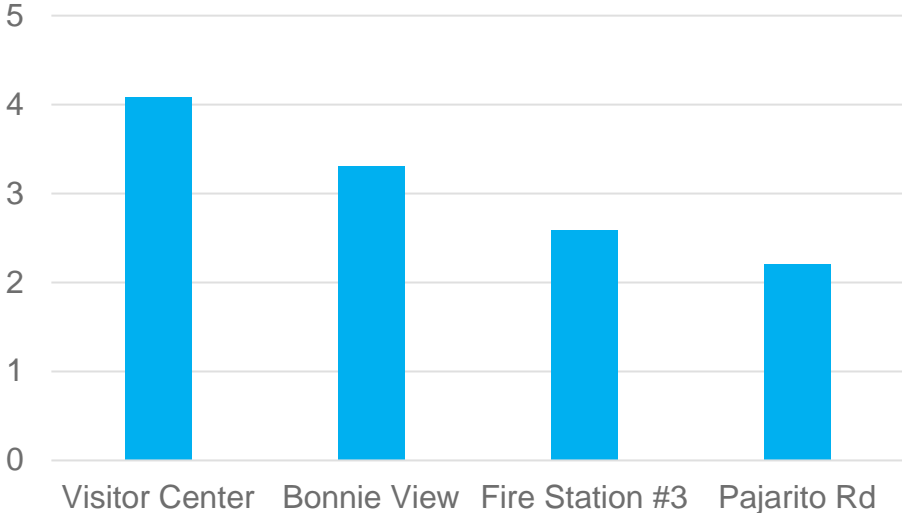
Community Survey

Dec 1 – 22, 2023 795 responses

Main Transit Site

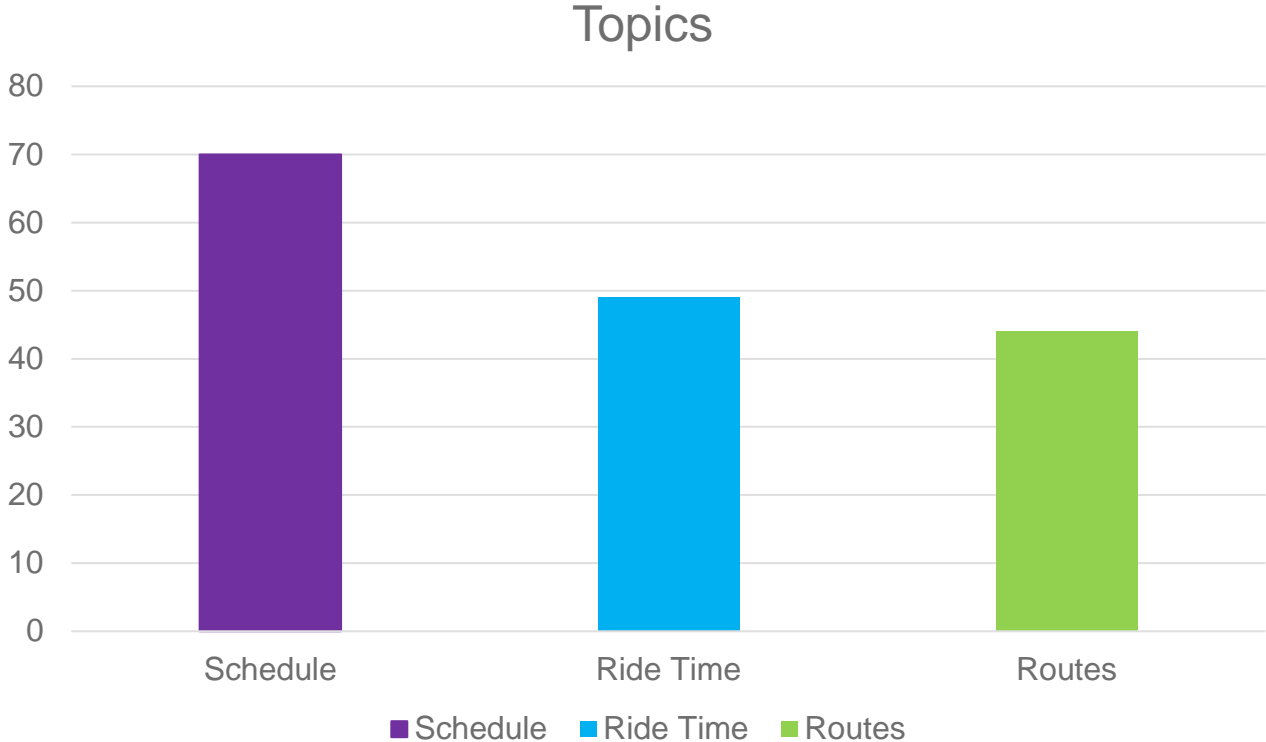


Auxiliary Transit Site



Priorities

250 write-in comments





LOS ALAMOS

Site Screening



LOS ALAMOS

Site Screening

Comparing Sites

2 Groups of Sites

- **Main Transit Center:** 5 sites, Los Alamos Townsite
- **Auxiliary Transit Center:** 4 sites, White Rock

3 Build Options

- Transit Center
- Transit Center + Park-n-Ride (PnR)
- Transit Center + Transit Oriented Development (TOD)

Comparative Analysis

- Sites ranked against each other



LOS ALAMOS

Site Screening

Criteria

Function

- Size, circulation, bike/ped connectivity

Land Use/Community

- Adjacent uses, aesthetic impact, potential TOD ability to promote development

Implementation

- Order of magnitude cost, relocation of existing uses, timing, special requirements



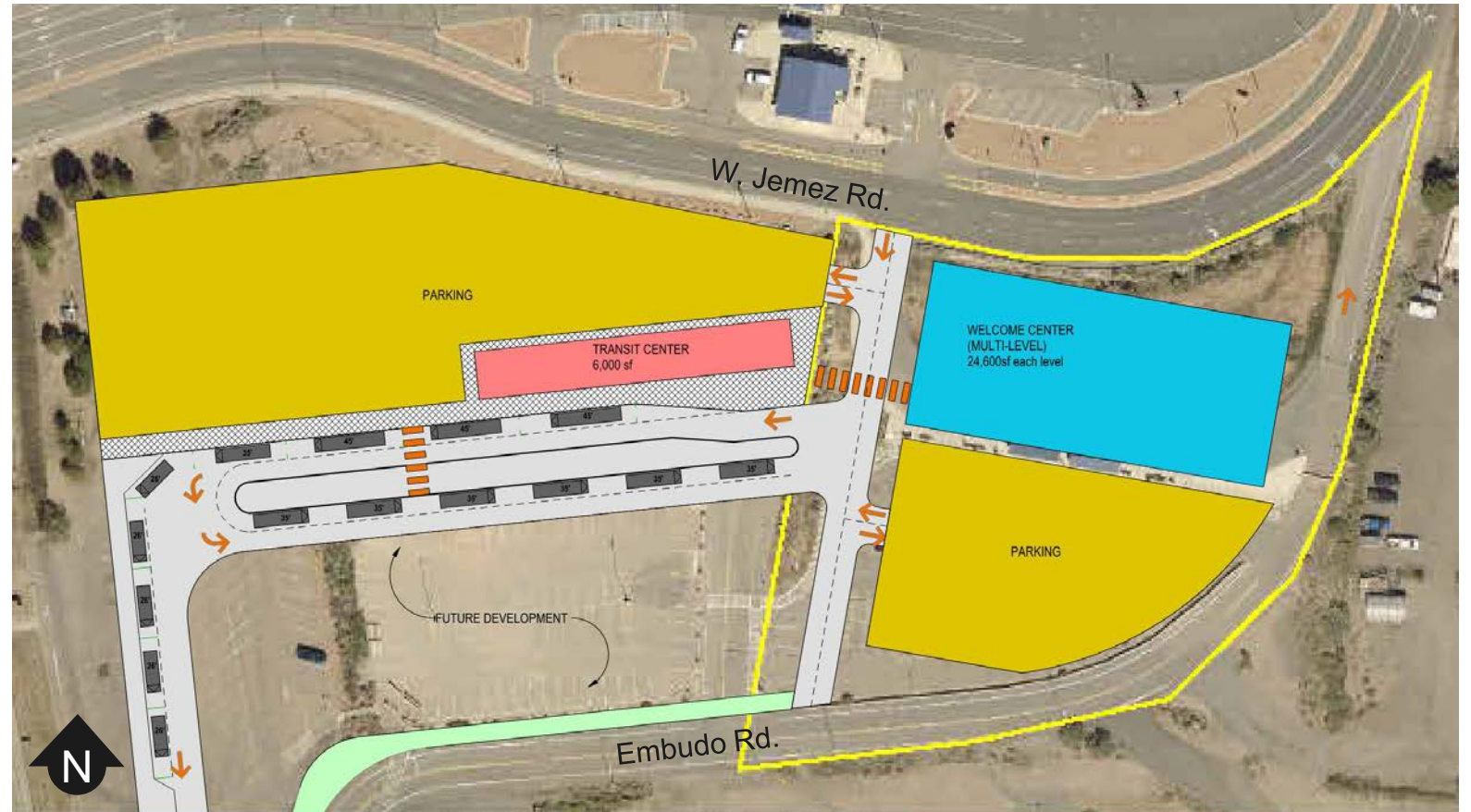
TA-3

Key Strengths

- 1. Serves LANL employees well
- 2. Large site = flexible layout

Key Weaknesses

- 1. Poor pedestrian/bike access
- 2. Distance to downtown nodes/uses
- 3. No PnR or TOD potential



2 Transit Center (tie)
 - Park n Ride
 - TOD



Mesa Public Library

Key Strengths

1. Serves multiple key destinations
2. No major acquisition / demolition

Key Weaknesses

1. Circuitous bus routing
2. Small site



- 5 Transit Center
- 3 Park n Ride
- 3 TOD (tie)



Deacon St

Key Strengths

- 1. Centrally situated
- 2. Serve multiple key destinations

Key Weaknesses

- 1. Small number of PnR
- 2. Small amount of residential
- 3. Constrained transit until redevelopment
- 4. Low visibility of transit center
- 5. Requires property acquisition



- 4 Transit Center
- 4 Park n Ride
- 3 TOD (tie)



LOS ALAMOS

Site Screening

20th St

Key Strengths

1. Serve multiple key destinations
2. Potential significant number of residential units

Key Weaknesses

1. Extended transfer distance between buses
2. Low visibility for transit center



2 Transit Center (tie) 2 Park n Ride 2 TOD



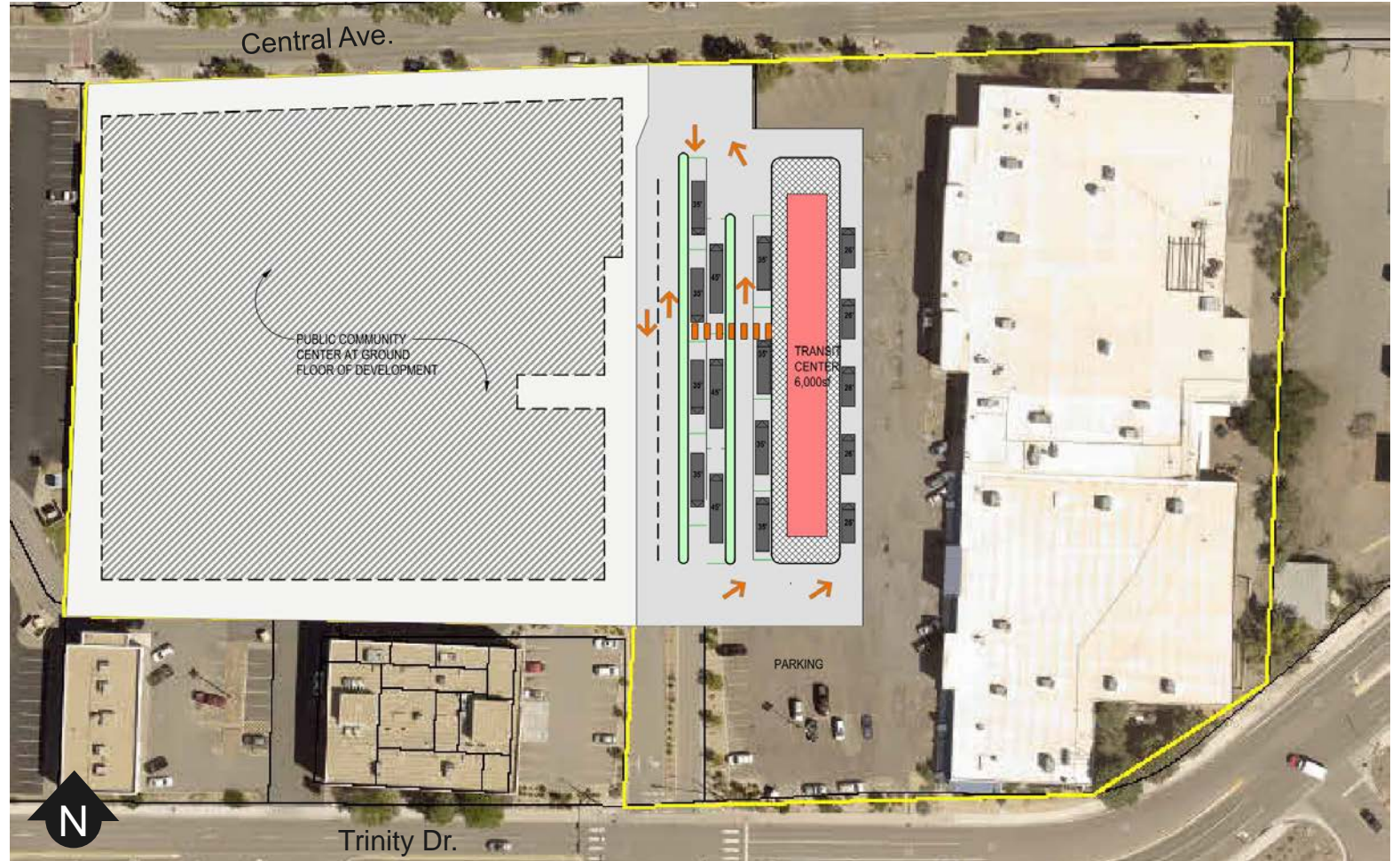
Mari Mac

Key Strengths

- 1. Serve multiple key destinations
- 2. Potential large number of residential units

Key Weaknesses

- 1. Largest amount of additional travel time
- 2. Requires property acquisition



- 1 Transit Center
- 1 Park n Ride
- 1 TOD



Main Transit Center

Transit Center Only

1. Mari Mac
2. TA-3
3. 20th St
4. Deacon St
5. Mesa Public Library

Transit Center + PnR

1. Mari Mac (tie)
1. 20th St (tie)
3. Mesa Public Library
4. Deacon St

Transit Center + PnR + TOD

1. Mari Mac
2. 20th St
3. Mesa Public Library
4. Deacon St

Assumptions / Notes

1. Compared least complex option for each site
2. TA-3 cannot accommodate PnR or TOD



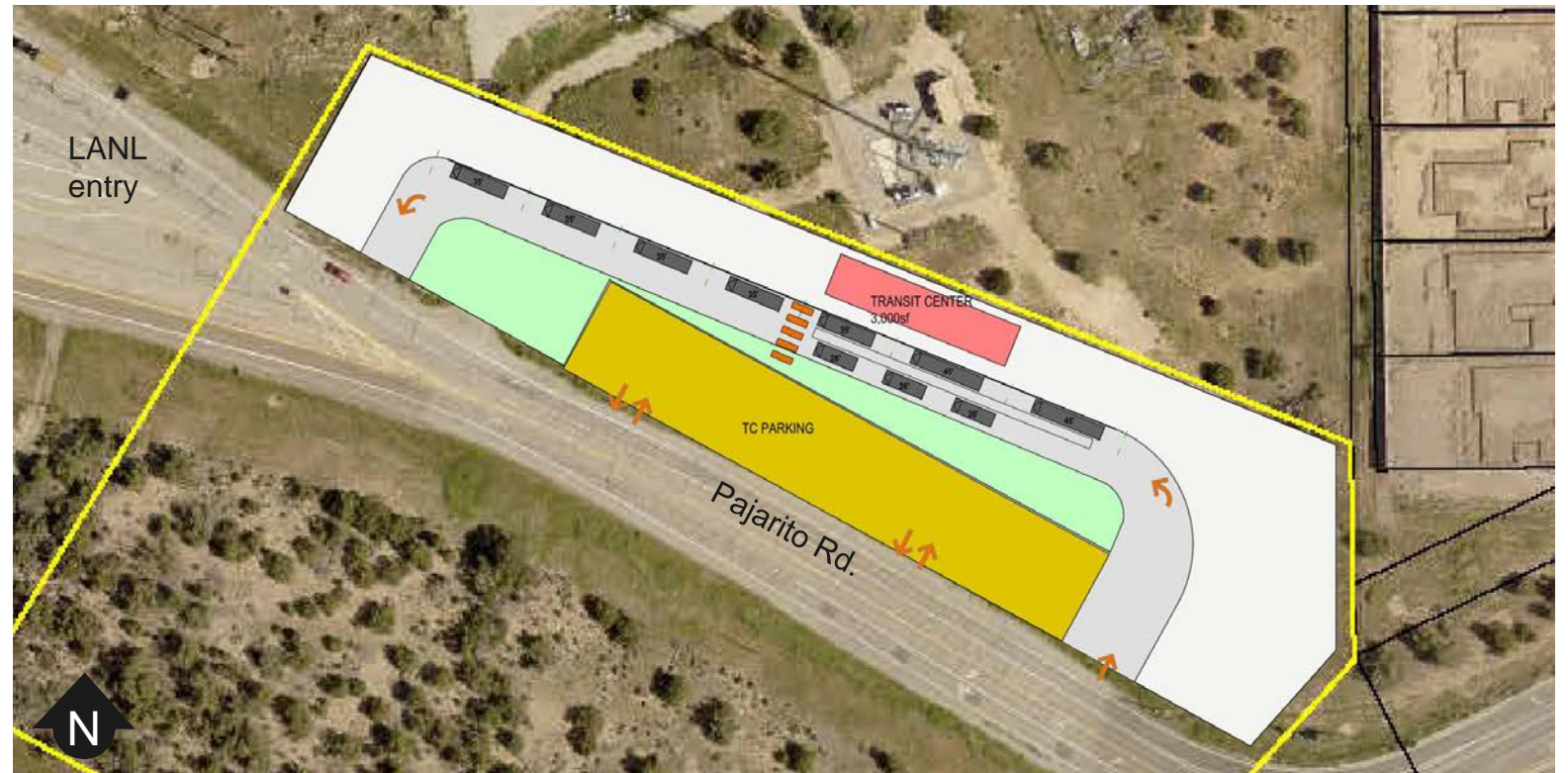
Pajarito Rd

Key Strengths

- 1. Signalized access for transit, bike, peds
- 2. Large site = flexible layout

Key Weaknesses

- 1. Slightly out-of-direction for Townsite
- 2. No PnR or TOD potential



4 Transit Center - Park n Ride (tie) - TOD



Visitors Center

Key Strengths

- 1. Contributes to civic node w/ Visitor Center and Fire Station

Key Weaknesses

- 1. Majority of bike/ped need to cross Hwy 4
- 2. Displace well-used RV facility



- 1 Transit Center
- 1 Park n Ride
- TOD



Bonnie View

Key Strengths

- 1. Majority of bike/ped not have to cross Hwy 4
- 2. Can accommodate TOD

Key Weaknesses

- 1. May be dependent upon re-alignment of Bonnie View Dr
- 2. Requires property acquisition



3 Transit Center 2 Park n Ride (tie) 1 TOD



Fire Station #3

Key Strengths

- 1. Separate access for bus/private vehicles

Key Weaknesses

- 1. Majority of bike/pedestrians must cross Hwy 4



- 2 Transit Center
- 3 Park n Ride (tie)
- TOD



Auxiliary Transit Center

Transit Center Only

1. Visitor Center
2. Fire Station #3
3. Bonnie View (tie)
3. Pajarito Rd (tie)

Transit Center + PnR

1. Visitor Center
2. Bonnie View
3. Fire Station #3

Transit Center + PnR + TOD

1. Bonnie View

Assumptions / Notes

1. Compared least complex option for each site
2. Pajarito Rd cannot accommodate PnR or TOD



LOS ALAMOS

Next Steps



LOS ALAMOS

Next Steps

Current Study

Process

1. Site visits
 2. Programming & Community survey
 3. Site Evaluation
 - 4. Financing Scenarios**
 - 5. Economic Impact Analysis**
- *Future: Additional Design & Analysis (2 sites max)*



LOS ALAMOS

Next Steps

Future Study

Impacts to:

- Travel times and people impacted
- Transfer requirements
- Routes (all providers)
- Private sector interest / housing units
- Coordination w/ LANL Master Plan
- Utilities
- Traffic Impact Analysis (TIA)



LOS ALAMOS

Comments / Contacts

Please submit all comment by May 14, 2024 to:

Public Works Department

1000 Central Avenue, Suite 160

Los Alamos, NM 87544

Or

Phone: (505) 662-8150

Email: lacpw@lacnm.us



LOS ALAMOS



LOS ALAMOS 6 MILES →

THE "ATOMIC CITY"

BIRTHPLACE OF THE ATOMIC AGE
SCIENTIFIC LABORATORY AND MUSEUM
GAS-FOOD-LODGING-GOLF COURSE

BANDELIER NATIONAL MONUMENT

TSANKAWI RUINS 0 MILES

← FRIJOLES CANYON 14.5 MILES
PREHISTORIC INDIAN RUINS

← VALLE GRANDE 22.5 MILES
LARGEST EXTINCT VOLCANIC CRATER

LOS ALAMOS CHAMBER OF COMMERCE

Thank You!