



Los Alamos County Open Space and Trails Update

Eric Peterson

December 17, 2019

Open Space Management Plans

- **Trails Management Plan (Revised 2012)**
 - This plan outlines implementation of maintenance and enhancement of the County's trail network. This document places current versions of trail policy, management and standards into a single reference.
- **Los Alamos Community Trail Plan (March 2013)**
 - Plan created by Trails Solutions of IMBA to develop a shared-use community trails plan for the trail network.
- **Open Space Management Plan (May 2015)**
 - This plan is the guiding framework for effective stewardship of the County's Open Space resources by identifying an Open Space System and by suggesting projects to restore or maintain ecosystem health and to provide outdoor recreations experiences while maintaining flexible long-term strategies
- **Trail Network Signage Plan (February 2015)**
 - The purpose of this plan is to provide a unified marking of trails which meets a balance between wayfinding needs of trail users and the aesthetics of County-owned open space.
- **IMBA Ride Center Report (November 2017)**
 - The IMBA Ride Center designation is designed to support local stakeholders and land managers in their effort to create the ultimate mountain biking destination trail system. The application criteria serves as the blueprint for achieving and improving a trail system and is comprised of multiple factors with both trail experience and surrounding community amenities being measured.

Update to Trails Management Plan/Master Plan

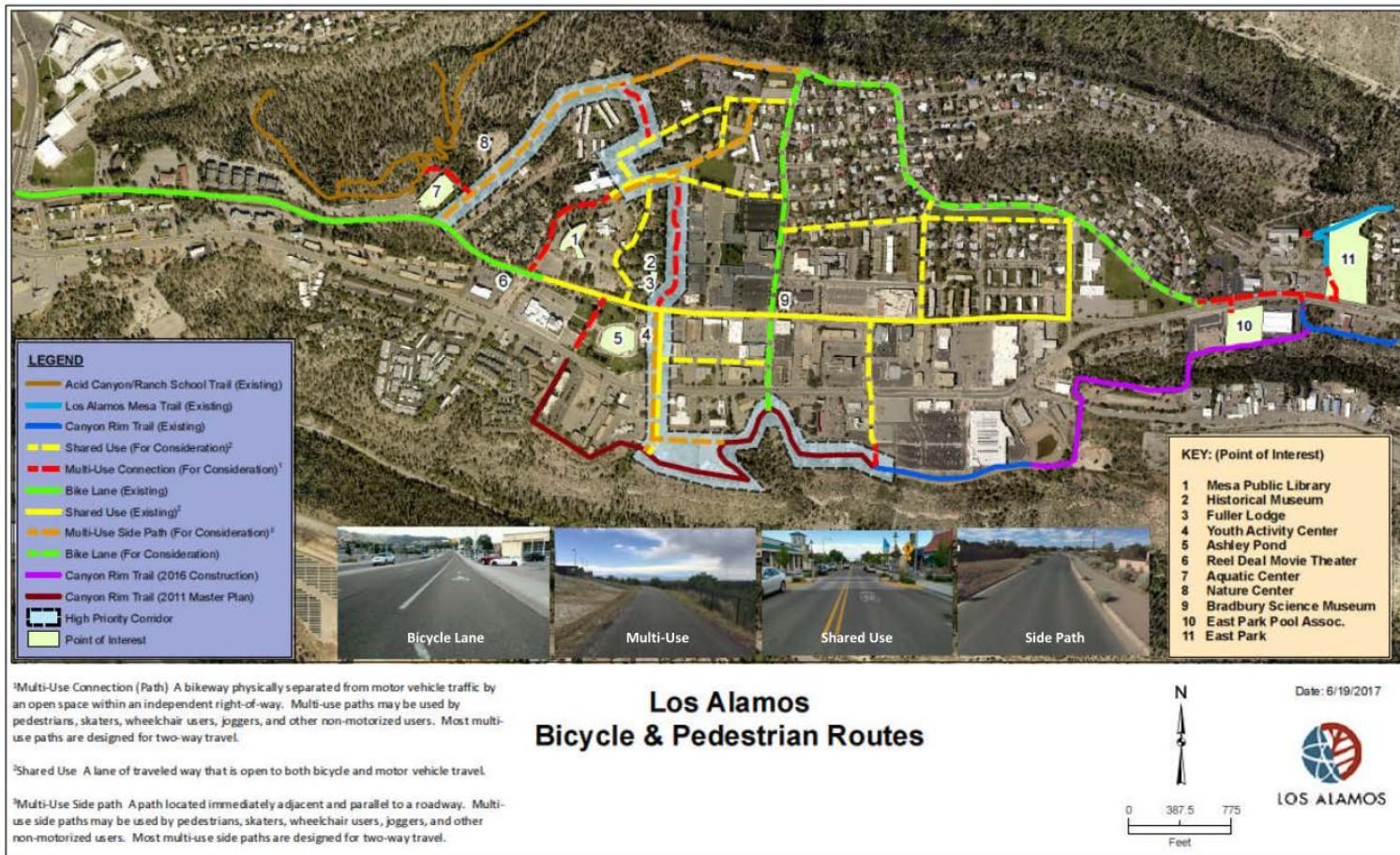
- FY20 Budget allocation in Parks Small Cap Fund: \$10,000
- Collaboration with LANL (also updating their Trails Plan)
- Incorporate cross jurisdiction trail management and projects that benefit the County and LANL.
- On-site assessments
- Create a single-source, 10-year master planning document (will be phased approach unless more \$ available)
- Tentative schedule for update is Spring 2020

Engagement with Partners

- Greater Santa Fe Recreation Partnership
- Trails Working Group (LANL Hosted)
- Santa Fe National Forest
- East Jemez Resource Council



Multiuse Trails Update

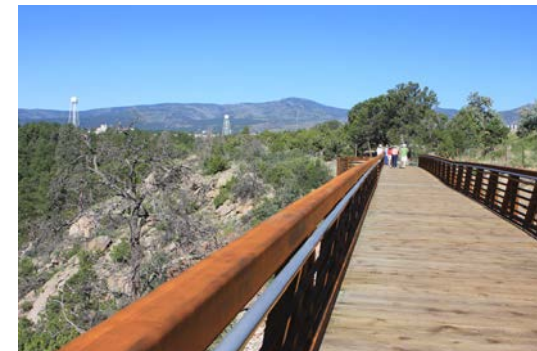


• Canyon Rim Trail

- Phase I – 502 Trailhead to Fire Station 6
 - Completed 2010
- Phase II – Fire Station 6 to Knecht St
 - Completed 2016
- Phase III – Knecht St – 20th St
 - Under design development

• Canyon Rim Trail Underpass

- Beneath NM 502 to Entrada Dr
- Final Design in process, construction anticipated 2020



Urban Trail

- Phase I – Trinity/20th to Spruce Street
- Phase II – Spruce Street to the Aquatic Center

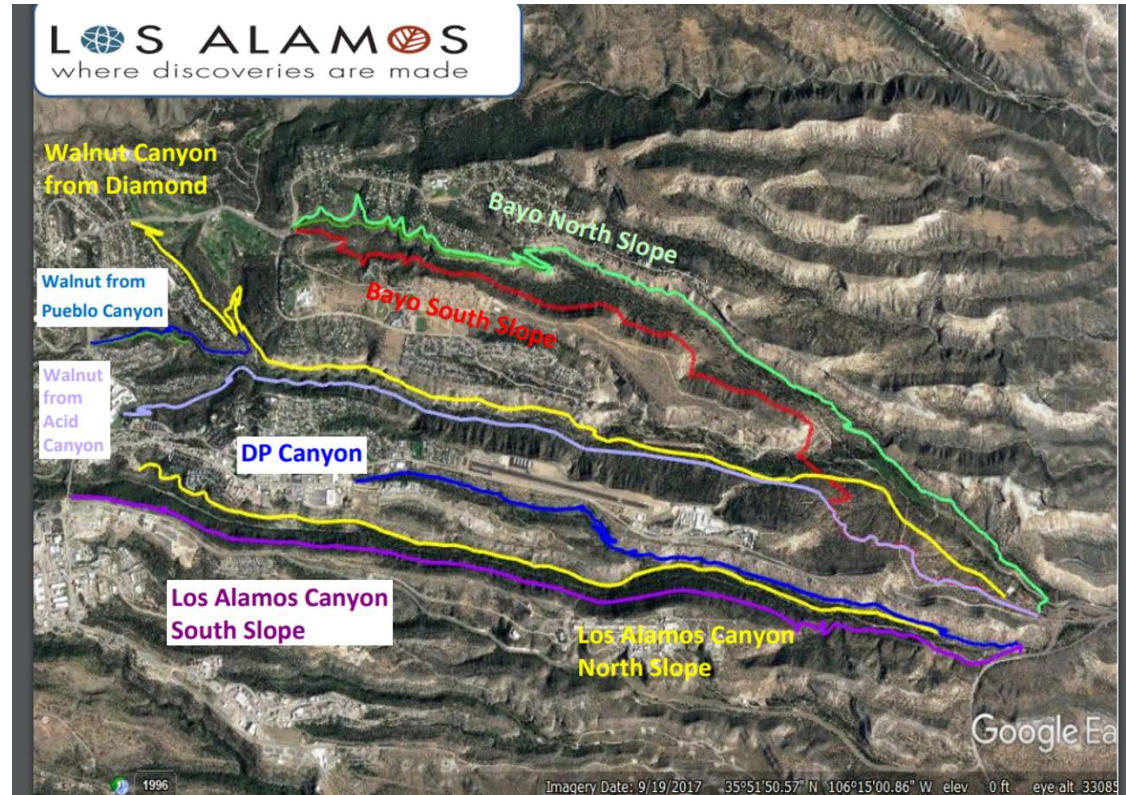


- Federally funded for FFY20,21,22:
 - ✓ FY 2021/22: \$700,000 through TAP for the Urban Trail Phase I Project
 - ✓ FY 2020/22: \$3,605,000 through the CMAQ Program for the Urban Trail Phase II Project

NOTE: CRT Phase III and Urban Trail are part of the 2017 Bicycle Transportation Plan “High Priority Corridor”

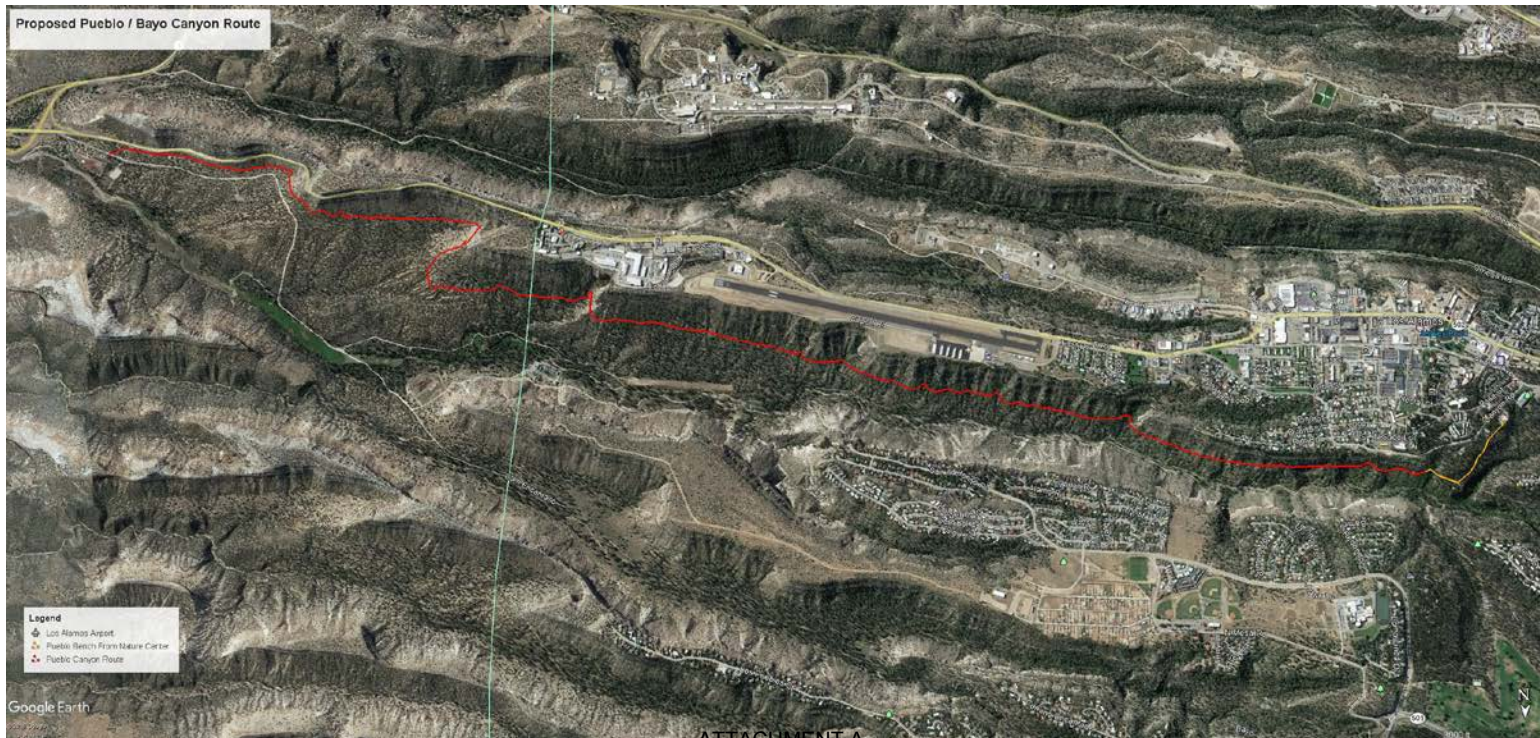
Flow Trail Update

- Last presentation to Council was October 16th, 2018.
- Funding
 - \$500K set aside
 - \$50K allocated
 - \$2.4K spent to date
- Top options:
 - DP Canyon to LA Canyon
 - LA Canyon – North Side
 - LA Canyon – South Side
 - Sides - not bottom
- Following guidance from the presentation we are currently revising the scope and budget.



Flow Trail Update (Cont.)

- We are looking at alternative locations to meet public input and Los Alamos County's strategic goals.
- Working to provide rough feasibility/cost estimate for possible Pueblo Canyon route



Signage Plan

Trail Network Signage Plan

The purpose of the plan is to provide a unified marking for Los Alamos County Trails which meets a balance between wayfinding needs of trail users and the aesthetics of County-owned open space.

- **Phase I**

- White Rock Canyon and Deer Trap Mesa
- Completed 2016

- **Phase II**

- Aquatic Center, Bayo Canyon and Kwage Mesa
- Completed 2018

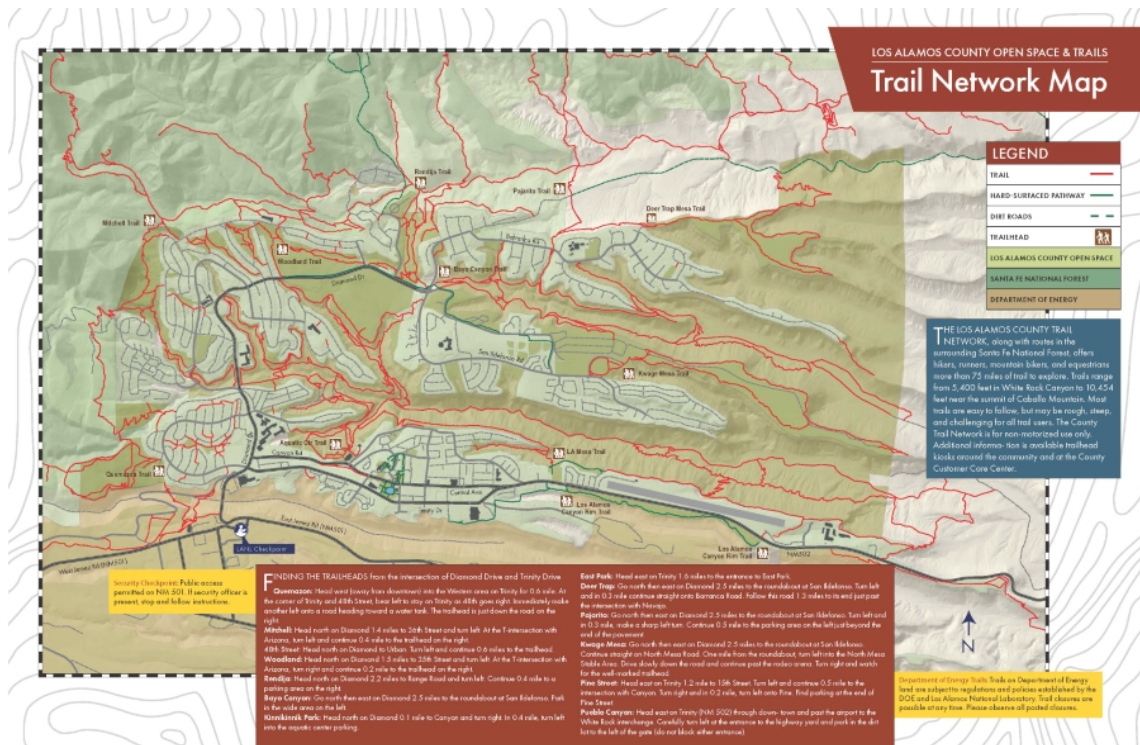
- **Phase III**

- Perimeter Trails
- In progress



Open Space Marketing

- Trail Network Map updated
- Trail Brochures updated
- Family Friendly Trails brochure created



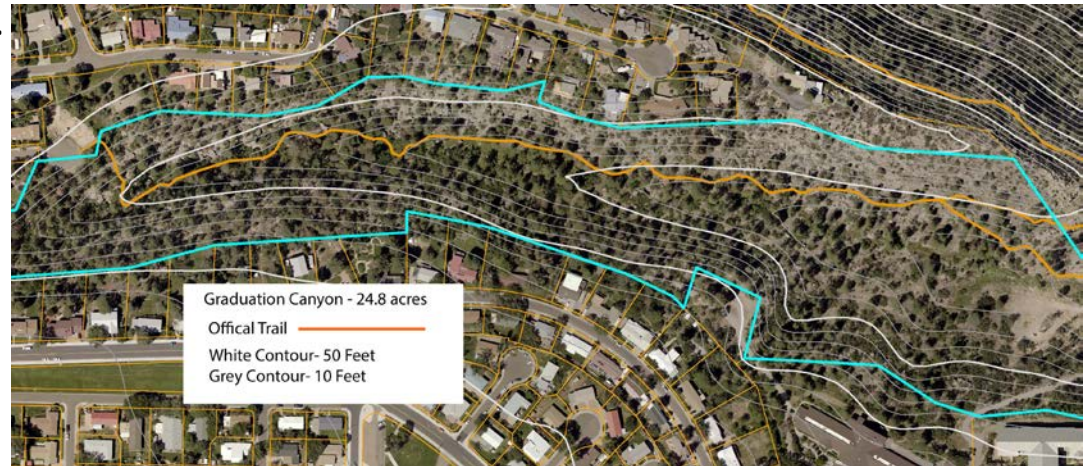
Graduation Canyon Restoration Project

- Natural Channel Design and Keystone Restoration completed the restoration project in Spring of 2019.
- The project included channel stabilization, erosion control and wildlife habitat improvements.
- Interpretive signage is currently being designed to illustrate the work that was performed.



Specs

- Construction Period:~10 days including layout and weather delays.
- Imported Rock – 17 cy (25 tons), remainder harvested on site
- Machines Used – Rubber tracked skid steer loader, Rubber tracked mini-excavator
- Machine Hours – 40 hours each
- Hand Crew – 2 crew members



Other Recent Trail Work

- N3B Trail Adoption- School Canyon Rim Trail
- Jim Billen Memorial Trail Dedication
- Earth Day Volunteer Event April 20th, 2019
- YMCA YCC Trail Crew
- Girl Scout Troop 10074 Tree planting project
- Fallen and hazard tree removal



Engagement with Equine Community

Trail Ride with equestrian members

- Dan Erickson and Eric Peterson invited to join members of North Mesa Stables on a horseback ride.
- Toured trails near the stables and discussed ways to improve equestrian access and constraints the equestrian community face.

New PRC subcommittee

- Equine and Livestock Advisory Subcommittee



Coordination between Recreation Trails and Multiuse Trails

- Use of Inter-Departmental Review Committee as mechanism for ensuring coordination (Open Space member of Committee)
- Ensure that Trails Master plan update includes this aspect of trails management and includes inter-department participation
- Inter-department participation in Trails Master planning effort and Bicycle Transportation plan
- Urban Trail developed specifically for this purpose
- Use of Canyon Rim Trail to Smith's to keep off highway
- Use of ACT buses should be considered
- Bicycle friendly community requirements can be used focus efforts



FY2020 Future Work

- Continue work to update Trails Master Plan
- On-board of Trail Builder/Machine Operator
- Prepare budget options for IMBA report recommendations
- Continue trail signage
- Continue collaboration with LANL and other partners to strengthen the entire trail system

Questions?

