



LOS ALAMOS

County of Los Alamos

Los Alamos, NM 87544
www.losalamosnm.us

Agenda - Final County Council - Work Session

*Denise Derkacs, Council Chair; Theresa Cull, Vice-Chair;
Melanee Hand; Suzie Havemann; Keith Lepsch; David Reagor;
and Randall Ryti, Councilors*

Tuesday, June 18, 2024

6:00 PM

Council Chambers - 1000 Central Avenue

NOTE: This meeting is in person and open to the public. However, for convenience, the following Zoom meeting link and/or telephone call in numbers may be used for public viewing and participation:

<https://us02web.zoom.us/j/84587518059>

Or Telephone:

Dial (for higher quality, dial a number based on your current location):

US: +1 253 215 8782 or +1 346 248 7799 or +1 669 900 6833 or +1 301 715 8592
or +1 312 626 6799 or +1 929 205 6099

Webinar ID: 845 8751 8059

1. OPENING/ROLL CALL
2. PLEDGE OF ALLEGIANCE
3. STATEMENT REGARDING CLOSED SESSION

June 18, 2024 Closed Sessions Motion

4. PUBLIC COMMENT

This section of the agenda is reserved for comments from the public on items that do not require action by the Council or are not otherwise on the agenda.

5. APPROVAL OF AGENDA

6. PRESENTATIONS, PROCLAMATIONS AND RECOGNITIONS

- A. [18501-24](#) Presentation by Jessica Kunkle, Manager of the Department of Energy Environmental Management, Los Alamos Field Office

Presenters: County Council - Work Session

Attachments: [A - EM-LA Update LAC Council](#)

- B. [18321-24](#) Briefing Presentation to Council by Stephanie Haaser, Chair, of the Arts in Public Places Advisory Board

Presenters: Stephanie Haaser, Chair of the Arts in Public Places Board and Cory Styron, Community Services Director

Attachments: [A - Arts in Public Places Advisory Board Presentation](#)
[B - FY24 Arts in Public Places Advisory Board Work Plan.pdf](#)

- C. [18322-24](#) Briefing Presentation to Council by Patrick Moore, Chair, of the Historic Preservation Advisory Board

Presenters: Sobia Sayeda, Planning Manager and Patrick Moore, Chair of the Historic Preservation Advisory Board

Attachments: [A - Historic Preservation Advisory Board Presentation](#)
[B - 2024 Historic Preservation Advisory Board Work Plan.pdf](#)

7. BUSINESS

- A. [18755-24](#) Quarterly Briefing by County Intergovernmental Affairs Manager on Current Regional and Intergovernmental Issues

Presenters: Danielle Duran, Intergovernmental Affairs Manager and Anne Laurent, County Manager

Attachments: [A - Regional and Intergovernmental Update June 18 2024](#)
[B - Regional Activities Work Sheet](#)

- B. [18568-24](#) Overview of Council Strategic Goal-Economic Vitality

Presenters: Paul Andrus, Community Development Director and Anne Laurent, County Manager

Attachments: [A -Economic Vitality Presentation.pdf](#)

8. ADJOURNMENT

If you are an individual with a disability who is in need of a reader, amplifier, qualified sign language interpreter, or any other form of auxiliary aid or service to attend or participate in the hearing or meeting, please contact the County Human Resources Division at 662-8040 at least one week prior to the meeting or as soon as possible. Public documents, including the agenda and minutes can be provided in various accessible formats. Please contact the personnel in the Office of the County Manager at 663-1750 if a summary or other type of accessible format is needed.



County of Los Alamos

Staff Report

June 18, 2024

Los Alamos, NM 87544
www.losalamosnm.us

Agenda No.:

Index (Council Goals):

Presenters:

Title

June 18, 2024 Closed Sessions Motion

Recommended Action

The following statement should be included in the minutes:

"The matters discussed in the Closed Sessions of County Council held on June 18,2024 that began at 4:00 pm was limited only to the topics specified in the notice of the closed sessions, and no action was taken on any matter in the closed sessions. We request that this statement be included in the meeting minutes."



County of Los Alamos

Los Alamos, NM 87544
www.losalamosnm.us

Staff Report

June 18, 2024

Agenda No.: A.

Index (Council Goals): Quality Governance - Intergovernmental and Regional Relations

Presenters: County Council - Work Session

Legislative File: 18501-24

Title

Presentation by Jessica Kunkle, Manager of the Department of Energy Environmental Management, Los Alamos Field Office

Body

Jessica Kunkle, Field Office Manager of the DOE Environmental Management Los Alamos and Ellie Gilbertson, Deputy Field Office Manager, will give Council and the community an update on several topics including the Chromium Plume, Middle DP Road, and TA-21. Brad Smith, N3B President and General Manager, will give a brief update on workforce development from the cleanup contractor side.

Attachments

A - EM-LA_Update LAC Council



U.S. DEPARTMENT OF
ENERGY

OFFICE OF
**ENVIRONMENTAL
MANAGEMENT**



Los Alamos National Laboratory (LANL) Legacy Cleanup - Technical Area 21

Update for Los Alamos County Council

Ellie Gilbertson, Deputy Manager
Environmental Management
Los Alamos Field Office
June 18, 2024

ATTACHMENT A



ENVIRONMENTAL MANAGEMENT
SAFETY ♦ PERFORMANCE ♦ CLEANUP ♦ CLOSURE



Safety Basis/Deactivation & Decommissioning (D&D):

- TA-21 Documented Safety Analysis (DSA)
- Characterization and D&D of Building 257, Industrial Waste Lines, and DP West slabs

2016 Compliance Order on Consent (Consent Order):

- TA-21 Cleanup Campaign remaining scope
 - Investigating and remediating 2 Aggregate Areas
 - Investigating and remediating, if needed, 38 remaining Solid Waste Management Units (SWMUs) and Areas of Concern (AOCs)





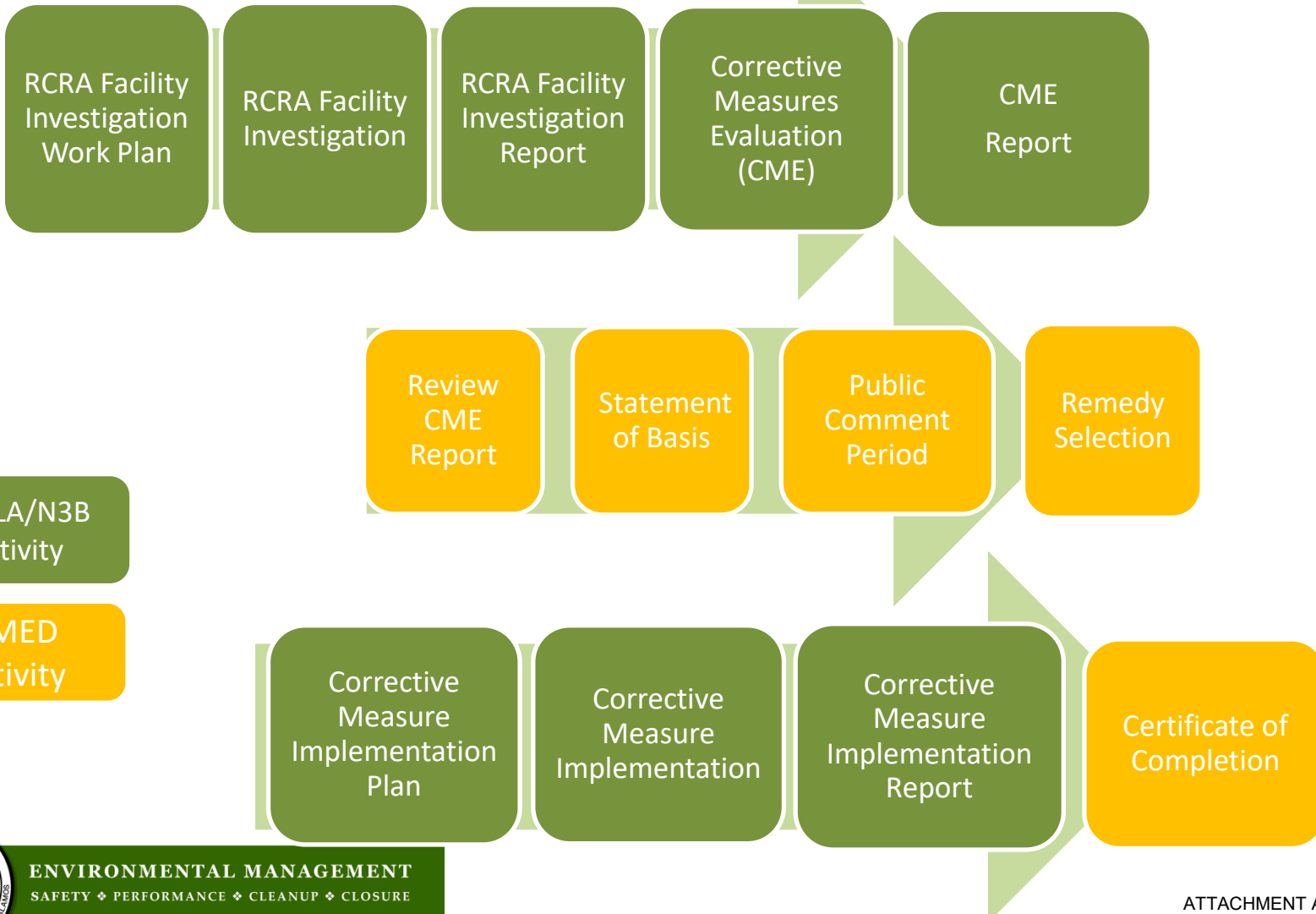
2016 Consent Order:

- Material Disposal Areas A and T Remedy Campaigns remaining scope
 - Obtain characterization data necessary to conduct Corrective Measures Evaluations (CME) and prepare and submit CME Reports
 - Following NMED's issuance of Statement of Basis and selection of remedies, prepare, submit, and receive NMED approvals of the Corrective Measures Implementation Plans (CMIP)
 - Implement NMED's selected remedies; prepare, submit, and receive NMED approvals of CMI Reports
 - MDA A SWMUs/AOCs: 1 and MDA T SWMUs/AOCs: 8





Consent Order Corrective Action Process (where CME is required)





- Three LANL legacy cleanup areas require a DSA
 - TA-21 (DP Site) – D&D
 - Area G in Technical Area 54 (TA-54) – Transuranic (TRU) Waste Operations
 - Nuclear Environmental Sites (NES) – MDA A (General's Tanks), MDA T, MDA H, and MDA AB
 - Previous operations, types of waste present, and methods of disposal in the past vary among MDAs





Purpose of a DSA

- Characterization of waste sites is necessary to safely and effectively remediate nuclear facilities
- Hazards need to be analyzed to determine impact of accidents involving hazardous material on the health/safety of workers and public, and to establish controls to mitigate potential impacts
- DOE requires that a facility has acceptable safety provisions before operations commence





- TA-21 DSA implementation – in progress
 - Enables non-intrusive sampling of Building 257
 - Based on results, DSA will be revised to enable D&D of Building 257 and Industrial Waste Lines
- MDA A Investigation Report
 - FY 2024 Milestone due to NMED by September 30, 2024
 - Report will include human health and ecological risk assessment
- MDA T Investigation Report
 - Current FY 2025 Target for September 30, 2025
 - Requires completion of 4 quarters of soil vapor sampling
 - Report will include human health and ecological risk assessment
- Ongoing groundwater monitoring at TA-21





County of Los Alamos

Los Alamos, NM 87544
www.losalamosnm.us

Staff Report

June 18, 2024

Agenda No.: B.

Index (Council Goals): Quality Governance - Communication and Engagement

Presenters: Stephanie Haaser, Chair of the Arts in Public Places Board and Cory Styron,
Community Services Director

Legislative File: 18321-24

Title

Briefing Presentation to Council by Stephanie Haaser, Chair, of the Arts in Public Places Advisory Board

Body

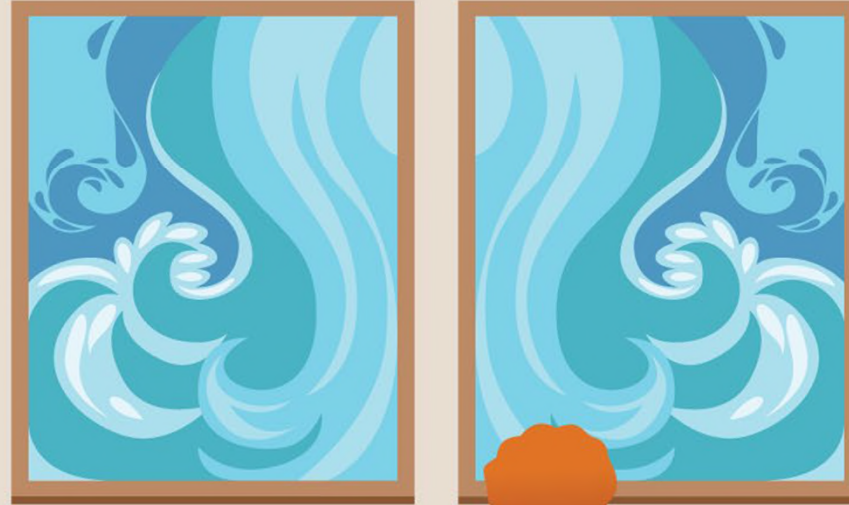
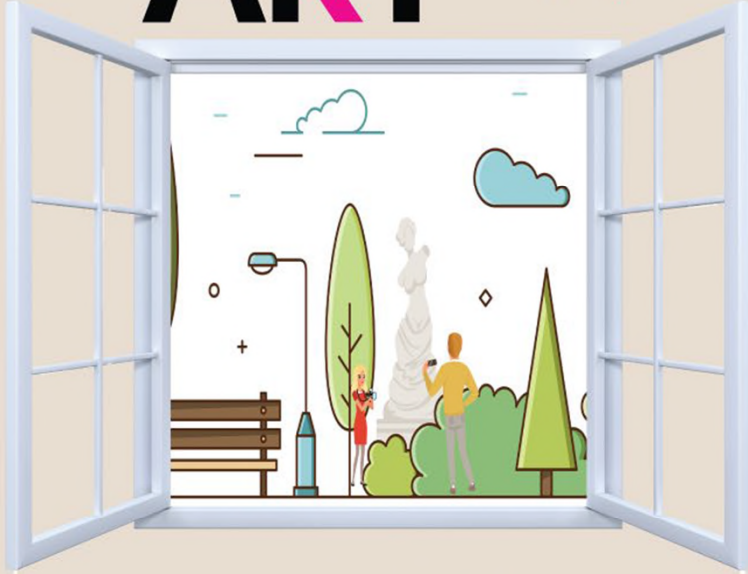
Council leadership has requested that each Board/Commission Chair make a presentation to the Council once a year focused on what has been completed and what they are currently working on, and what challenges or opportunities they see coming up in the future .

Attachments

- A - Arts in Public Places Advisory Board Presentation
- B - FY24 Arts in Public Places Advisory Board Work Plan

ART IN

LOS ALAMOS
where discoveries are made



PUBLIC PLACES

October 25, 2022

Chair: Stephanie Haaser
Vice Chair: Jasmine Stephens
Staff Liaison: Linda Lindstrom

Our Mission

To encourage the integration of art into the architecture of municipal structures, increase the general public awareness of art, to visually enhance the community, to capture a part of our history for future generations, to promote the establishment of a collection of art with the works of artists who live or work, or who have lived or worked in Los Alamos County having a priority. The Art in Public Places fund is created for the express purposes of acquiring, installing and maintaining county-owned works of art and for the administrative support, cataloging, display and use attendant to the County's ownership of the works of art. The account shall include one percent of the budget of any capital improvement project and one-half of one percent of the budget of any such road project.

Activities & Accomplishments

- Installation of “Moonrise, Shiprock” by Pat Gould (August 2023) at the LAC Airport.



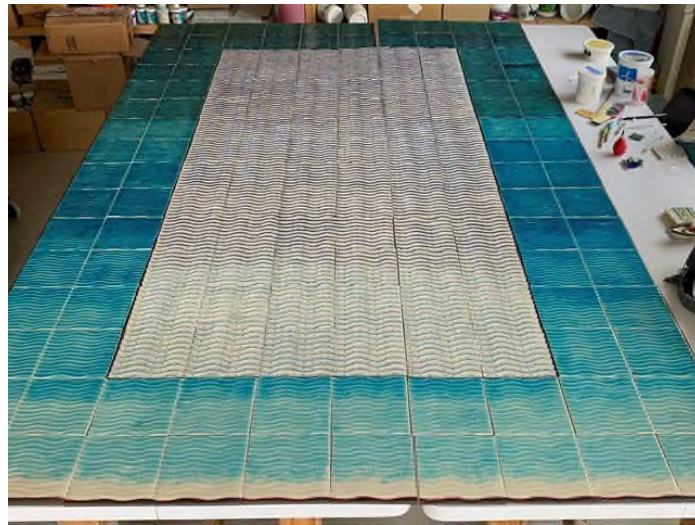
Activities & Accomplishments

- Installation of custom piece of recycles fiber art by Lindsay Brenner at LAC Airport (September 2023).



Activities & Accomplishments

- Leisure Lagoon Art production is ongoing. The first panel is complete. The full installation of all panels is projected to take place Summer of 2024.



Activities & Accomplishments

- Relocation of “Untitled” by John Dorman in the Mesa Public Library approved and completed. Request made by library staff.



Activities & Accomplishments

- Relocation of "FH-1409" by Francis Harlow to the Art in Public Places Storage until a proper location is identified. This relocation was requested by the Public Works Park Director.



Activities & Accomplishments

- Annual Art Collection Maintenance completed by Pacific Coast Conservations
- FY 2024 Work Plan approved by Art in Public Places Board and County Council.
- Public Survey completed regarding the possible acceptance of the Los Alamos Little Theater Boiler into the Art in Public Places (APP) collection. This potential project was discussed with County Staff, the Historical Advisory Board, and the Manhattan Project National Historical Park.
- Completed the review and update of the Board's Policies and Procedures.

New Board Members

Currently have a full board with our newest members, Jasmine Stephens and Timothy Foley, joining the board in March 2024.

In Progress Items

- Board is currently working on identifying art for the Golf Course. This work was proposed by Golf Course staff in October 2023.
- Board is pursuing discussions for a potential art installation on Barranca Mesa. This work was proposed by a David Hampton in April 2024.
- Board is working to replace damaged plaques for Oppenheimer and Groves statue and “Pollyanna.”
- Board is working to identify a location for the Santa Clara jar by Polly Rose Folwell.



Challenges and Lessons Learned

- Identify projects with capital improvements that will provide APP with revenue and work with project staff for any public art opportunities.
- Assign individual board members to projects and initiatives to help speed up tasks.
- Training of New Board Members is vital for understanding meeting procedures.

Collaborations and Working Relationships

- APP works closely with Parks, Public Works, and Facilities regarding placement, installation, lighting, and landscaping for current and future art pieces:
- APP collaborates as needed with other boards and commissions:
 - Parks & Recreation
 - Historical Preservation Advisory
- Linda Lindstrom, staff Liaison continues to work diligently to ensure projects and action items are completed per policy, accurately and timely.
- Working with Pacific Coast Conservations to clean and maintain the outdoor sculptures.



Thank
You

Board or Commission Name:

Date Prepared:

Date Approved by Council:

Prepared By:

Purpose:

The purpose of the work plan is to provide a detailed outline of tasks, activities, timelines, and resources required by this Board or Commission to achieve its annual goals. The purpose of most boards is to gather public input, to review policy recommendations by staff when requested, and to make policy recommendations to the County Council.

Process Timeline:

November: County Council Strategic Planning

December: Boards and Commissions review and develop work plans (sole item on December agenda)

January: Finalize and submit work plans for Council review.

Due Date: February 1

Time Frame: This work plan will be accomplished in the following time frame:

January 1, 2024, through December 31, 2024.

Members: List members, term start and end dates, and term number.

Member	Start/End Dates	Term (1st or 2nd)

Chairperson:

Department Director:

Work plan developed in collaboration with Department Director? (Y/N)

Staff Liaison:

Administrative Support:

Council Liaison:

Work plan reviewed by Council Liaison? (Y/N)

1.0 Previous Calendar Year Work Plan Highlights

1.1 List the top five activities for the previous calendar year.

1.1.1

--

1.1.2

--

1.1.3

--

1.1.4

--

1.1.5

--

1.2 List the top five accomplishments for the previous calendar year.

1.2.1

--

1.2.2

--

1.2.3

--

1.2.4

--

1.2.5

--

1.3 List the lessons learned for the previous calendar year.

1.3.1

--

1.3.2

--

1.3.3

--

1.3.4

--

1.3.5

--

2.0 Calendar Year 2024 Work Plan

2.1 List any special projects or assignments given to this Board/Commission by Council or the Department Director.

2.1.1

--

2.1.2

--

2.1.3

--

2.1.4

--

2.1.5

--

2.2 List other projects and/or activities being proposed by this Board/Commission, in priority order.

2.2.1

--

2.2.1

--

2.2.2

--

2.2.3

--

2.2.4

--

2.2.5

--

2.3 List the guiding documents or plans used by this Board/Commission.

2.3.1

3.0 Identify interfaces with County departments and/or other Boards/Commissions that are necessary to achieve this work plan.

3.1

3.2

3.3

3.4

3.5

4.0 List any special events this Board/Commission plans to participate in that will support this work plan.

4.1

4.2

--

4.3

--

4.4

--

4.5

--

5.0 List active Working Groups within this Board/Commission, if any, along with the purpose and member names of each one.

5.1

--

5.2

--

5.3

--

5.4

--

5.5

--

Attachment A

Place an X in the column on the right if the Council priority is related to the work of the Board or Commission:

Quality Governance	
Quality governance is participatory, consensus-oriented, transparent, accountable, effective, efficient, and responsive to the present and future needs of stakeholders.	
Communication and Engagement	
Inform, educate, and solicit feedback from the community and boards and commissions on County projects, policies, and priorities to promote a culture of open communication and collaboration and foster exceptional customer service.	
Intergovernmental, Tribal, and Regional Relations	
Collaborate and problem-solve with the County’s major employers; community partner organizations; neighboring Pueblos; and regional, state, and national governmental entities.	
Fiscal Stewardship	
Maintain fiscal sustainability, transparency, and compliance with applicable budgetary and financial regulatory standards.	
Operational Excellence	
Operational excellence involves having structures, processes, standards, and oversight in place to ensure that effective services are efficiently delivered within available resources and that services continuously improve.	
Effective, Efficient, and Reliable Services	
Deliver customer-focused, accessible, reliable, and sustainable services to the community through sound financial management, collaborative decision-making, and efficient implementation.	
Infrastructure Asset Management	
Evaluate the County’s assets and infrastructure and prioritize funding to first maintain and protect those investments and second to inform new investments.	
Employee Recruitment and Retention	
Attract and employ diverse and highly qualified staff; retain staff through development opportunities, compensation, and benefits; and promote staff to address increasingly complex challenges.	
Economic Vitality	
Economic vitality encompasses the ability of the community to diversify, develop, grow, and sustain the many elements necessary for a local economy to flourish.	
Housing	
Increase the capacity for new housing development and the amount and variety of housing types to meet the needs of a changing and growing population, particularly middle- and lower-income households.	
Local Business	
Encourage the retention of existing businesses, facilitate the startup of new businesses, and assist in opportunities for growth.	
Downtown Revitalization	
Revitalize the downtown areas of Los Alamos and White Rock by facilitating development opportunities in accordance with the downtown master plans.	
Tourism and Special Events	
Sponsor special events, support major employer and community events, and promote tourism by enhancing amenities, utilizing facilities and contract services, and encouraging overnight stays.	
Community Broadband	
Provide community broadband as a basic essential service that will enable reliable high-speed internet services throughout the County at competitive pricing.	

Quality of Life	
Quality of life is a reflection of general well-being and the degree to which community members are healthy, comfortable, welcomed, included, and able to enjoy the activities of daily living.	
Health, Wellbeing, and Social Services	
Improve access to behavioral, mental, and physical health and social services and amenities to address identified issues and promote wellbeing in the region.	
Diversity, Equity, and Inclusivity	
Promote diversity, equity, and inclusivity through community awareness training, targeted events, and expanded opportunities for diverse interests.	
Mobility	
Improve and expand access to, and all-ability accommodations for, alternative modes of travel including public transit, cycling, and walking amenities and services.	
Educational, Historical, and Cultural Amenities	
Promote educational and cultural opportunities, in coordination with community partners, and provide for the preservation and restoration of historic buildings and the protection of archaeological sites.	
Open Space, Parks, and Recreation	
Manage County open space and maintain and improve parks and recreation facilities, trails, and amenities as defined by adopted plans and approved projects.	
Public Safety	
Ensure overall community safety through proactive and sustained implementation of police, fire hazard mitigation, and emergency response plans.	
Environmental Stewardship	
Environmental stewardship is the responsible use and protection of the natural environment through active participation in conservation efforts and sustainable practices in coordination with community and organizational partners.	
Natural Resource Protection	
Take actions to protect the wildlife and wildland interface, safeguard water, and mitigate tree loss in the community.	
Greenhouse Gas Reduction	
Establish targets for achieving net-zero greenhouse gas emissions and integrate sustainability and resiliency practices into County policies and operations.	
Carbon-Neutral Energy Supply	
Achieve carbon neutrality in electrical supply by 2040 through diversified carbon-free electric sourcing and phase out natural gas supply by 2070 through energy-efficient, all-electric buildings.	
Water Conservation	
Reduce potable water use and increase non-potable water use and water harvesting for irrigation where suitable.	
Waste Management	
Manage waste responsibly by diversion of solid waste from landfills through recycling, re-use, composting, and waste reduction programs and zero-waste education campaigns; and pursue efficient long-term solutions for disposal of solid waste.	



County of Los Alamos

Los Alamos, NM 87544
www.losalamosnm.us

Staff Report

June 18, 2024

Agenda No.:	C.
Index (Council Goals):	Quality Governance - Communication and Engagement
Presenters:	Sobia Sayeda, Planning Manager and Patrick Moore, Chair of the Historic Preservation Advisory Board
Legislative File:	18322-24

Title

Briefing Presentation to Council by Patrick Moore, Chair, of the Historic Preservation Advisory Board

Body

Council leadership has requested that each Board/Commission Chair make a presentation to the Council once a year focused on what has been completed and what they are currently working on, and what challenges or opportunities they see coming up in the future .

Attachments

- A - Historic Preservation Advisory Board Presentation
- B - 2024 Historic Preservation Advisory Board Work Plan

HISTORIC PRESERVATION ADVISORY BOARD

Presentation to Los Alamos County Council

June 18, 2024

By Patrick Moore, Chair

Members: Patrick Moore, Patrick Cruz, Elizabeth Martineau, Loretta Weiss, Carrie Gregory

LOS ALAMOS 

2024 Work Plan: Overview & Priority Projects

Activities over the past 12-months:

- The Historic Preservation Advisory Board (HPAB) Work Plan includes the standard tasks of reviewing and providing advice and guidance for various requests for properties listed on Federal Register of Historic Districts and Landmarks and State Designated Historic Sites within Los Alamos County. In addition, the 2024 Work Plan included the task to designate a Local Historic District(s) and identifying Landmarks, trails, and buildings in the County for Federal and Local Designation.
- So far during FY24, the Board has provided input on presentations by Public Works staff on the Women's Dorm Building during the design process; presentations by the Garden Club members for a design proposal for a deer fence at the Rose Garden at Fuller Lodge grounds; and a presentation by Community Services Department for shade structures at Ashley Pond American for Disabilities Act (ADA) concrete pads.
- This year the Board also focused on identifying areas of opportunities and public outreach in formulating a conversation regarding designation of a local Historic District(s).
- The Board Chair and Staff Liaison attended a City of Santa Fe Historic Districts Review Board (HDRB) regular meeting for educational and informational purposes.

Challenges to Accomplishing our Priority Objectives:

- Many challenges were faced by HPAB earlier in FY 2024 regarding an application by Los Alamos County to establish a Historic Protection Overlay (HPO) Zone District.
- Property owners within the Fuller Lodge Historic District (former Ranch School properties) had questions and concerns regarding establishing a local HPO Zone District and expressed a desire to revise the verbiage in the current applicable code.
- Board vacancies inhibit a five (5) member board to meet quorum each month.

How Can Council Help?

- Discussion on Goals and Priorities as Defined in 2024 Work Plan.

Board or Commission Name: Historic Preservation Advisory Board

Date Prepared: 3/6/24

Date Approved by Council:

Prepared By: HPAB

Purpose:

The purpose of the work plan is to provide a detailed outline of tasks, activities, timelines, and resources required by this Board or Commission to achieve its annual goals. The purpose of most boards is to gather public input, to review policy recommendations by staff when requested, and to make policy recommendations to the County Council.

Process Timeline:

November: County Council Strategic Planning

December: Boards and Commissions review and develop work plans (primary item on December agenda)

January: Finalize and submit work plans for Council review.

Due Date: February 1

Time Frame: This work plan will be accomplished in the following time frame:

January 1, 2024, through December 31, 2024.

Members: List members, term start and end dates, and term number.

Member	Start/End Dates	Term (1st or 2nd)
Loretta A. Weiss	5/1/2023-4/30/2026	1
Vice Chair - Elizabeth Martineau	5/1/2023-4/30/2026	1
Carrie J. Gregory	5/1/2023-4/30/2026	1
Patrick J. Cruz	10/1/2023-9/30/2026	1
Patrick K. Moore	10/1/2023-9/30/2026	1

Chairperson: Elizabeth Martineau (Vice)

Department Director: Paul Andrus

Work plan developed in collaboration with Department Director? (Y/N) N

Staff Liaison: Sobia Sayeda

Administrative Support: Desirae J. Lujan

Council Liaison: Suzie Havemann

Work plan reviewed by Council Liaison? (Y/N) Y

1.0 Previous Calendar Year Work Plan Highlights

1.1 List the top five activities for the previous calendar year.

- 1.1.1 Communicated with the State Historic Preservation Office (SHPO) concerning acceptable changes to regulatory language applicable to a Historic Protection Overlay zone district.
- 1.1.2 Researched and discussed grant opportunities.
- 1.1.3 Received a presentation by the Los Alamos County Parks Superintendent regarding the construction of shade structures at Ashley Pond. The Board supported the project as presented.
- 1.1.4 Reached out to SHPO regarding 2024 grant opportunities and tax program.
- 1.1.5 Strengthened partnerships with Los Alamos County and non-profit organizations to accomplish Los Alamos County Council goals.

1.2 List the top five accomplishments for the previous calendar year.

- 1.2.1 Held a public hearing for an application by Los Alamos County to establish a Historic Protection Overlay zone district, and attended the Los Alamos Historical Society's Board meeting to provide information related to establishing a Historic Protection Overlay Zone.
- 1.2.2 Attended a City of Santa Fe Historic Districts Review Board Meeting.
- 1.2.3 Received training from State Historic Preservation Office (SHPO) staff.
- 1.2.4 Initiated a collection of documents relevant to oversight of Los Alamos historical properties into a formal "HPAB Reference Handbook"; this handbook will serve future HPAB boards during personnel transitions and will facilitate onboarding of new board members.

1.2.5 Promoted and participated in Los Alamos Commerce and Development's 2024 Ambassador Program to welcome visitors.

1.3 List the lessons learned for the previous calendar year.

1.3.1 Increase engagement with owners of ranch school properties, and establish clearer guidelines for evaluating changes within the proposed historic district.

1.3.2 Improve onboarding and training for new members.

1.3.3

1.3.4

1.3.5

2.0 Calendar Year 2024 Work Plan

2.1 List any special projects or assignments given to this Board/Commission by Council or the Department Director.

2.1.1 Finalize a Ranch School/Fuller Lodge District application and establish local district per Code.

2.1.2 Identify and propose historic landmarks in the county.

2.1.3 Contribute to ongoing discussions regarding the development of the Women's Dormitory building, and the Baker House.

2.1.4

2.1.5

2.2 List other projects and/or activities being proposed by this Board/Commission, in priority order.

2.2.1 Create guidelines to implement Historic Preservation Ordinance to propose improvements and new construction within Ranch School/Fuller Lodge Historic District.

2.2.1 Advise in continued support of the implementation of the Fuller Lodge Interpretive Plan. Assist in planning, fabricating, and installing interpretive features.

2.2.2 Improve coordination with LANL Cultural Resources Specialists regarding identifying preservation treatment and promotion of resources, and review current lists of federal and cultural and historic sites, and LANL database to build an inventory of buildings and trails that meet the Federal and State Historic Ordinance criteria.

2.2.3 Review the new Sec. 16-9 Historic Protection Overlay in the revised Development Code.

2.2.4 Conduct outreach presentations to community organizations about historic structures or events.

2.2.5

2.3 List the guiding documents or plans used by this Board/Commission.

- 2.3.1 Federal, State and Local Historic Ordinances;
Los Alamos County Code of Ordinances, Chapter 8, Boards and Commissions, Article III. Historic Preservation Advisory Board;
State of New Mexico Certified Local Government (CLG) Program Manual;
Historic Preservation Plan (September 2008);
Fuller Lodge Interpretive Plan (June 2018);
Los Alamos County Code of Ordinances, Chapter 16, Development Code, Section 16-9, Section 16-73(g-h), Section 16-74(d-f), and Section 16-75(b); and
The History of the Rose Garden (Updated July 2009)

3.0 Identify interfaces with County departments and/or other Boards/Commissions that are necessary to achieve this work plan.

3.1 Los Alamos Lodgers' Tax Advisory Board

3.2 Art in Public Places Advisory Board

3.3 Planning & Zoning Commission

3.4 Manhattan Project National Historical Park

3.5 MainStreet Futures Committee

4.0 List any special events this Board/Commission plans to participate in that will support this work plan.

4.1 HPAB is dedicated to public participation and will participate in community events as warranted.

4.2

--

4.3

--

4.4

--

4.5

--

5.0 List active Working Groups within this Board/Commission, if any, along with the purpose and member names of each one.

5.1

--

5.2

--

5.3

--

5.4

--

5.5

--

Attachment A

Place an X in the column on the right if the Council priority is related to the work of the Board or Commission:

Quality Governance	
Quality governance is participatory, consensus-oriented, transparent, accountable, effective, efficient, and responsive to the present and future needs of stakeholders.	
Communication and Engagement	
Inform, educate, and solicit feedback from the community and boards and commissions on County projects, policies, and priorities to promote a culture of open communication and collaboration and foster exceptional customer service.	X
Intergovernmental, Tribal, and Regional Relations	
Collaborate and problem-solve with the County's major employers; community partner organizations; neighboring Pueblos; and regional, state, and national governmental entities.	X
Fiscal Stewardship	
Maintain fiscal sustainability, transparency, and compliance with applicable budgetary and financial regulatory standards.	
Operational Excellence	
Operational excellence involves having structures, processes, standards, and oversight in place to ensure that effective services are efficiently delivered within available resources and that services continuously improve.	
Effective, Efficient, and Reliable Services	
Deliver customer-focused, accessible, reliable, and sustainable services to the community through sound financial management, collaborative decision-making, and efficient implementation.	
Infrastructure Asset Management	
Evaluate the County's assets and infrastructure and prioritize funding to first maintain and protect those investments and second to inform new investments.	X
Employee Recruitment and Retention	
Attract and employ diverse and highly qualified staff; retain staff through development opportunities, compensation, and benefits; and promote staff to address increasingly complex challenges.	
Economic Vitality	
Economic vitality encompasses the ability of the community to diversify, develop, grow, and sustain the many elements necessary for a local economy to flourish.	
Housing	
Increase the capacity for new housing development and the amount and variety of housing types to meet the needs of a changing and growing population, particularly middle- and lower-income households.	
Local Business	
Encourage the retention of existing businesses, facilitate the startup of new businesses, and assist in opportunities for growth.	
Downtown Revitalization	
Revitalize the downtown areas of Los Alamos and White Rock by facilitating development opportunities in accordance with the downtown master plans.	
Tourism and Special Events	
Sponsor special events, support major employer and community events, and promote tourism by enhancing amenities, utilizing facilities and contract services, and encouraging overnight stays.	X
Community Broadband	
Provide community broadband as a basic essential service that will enable reliable high-speed internet services throughout the County at competitive pricing.	

Quality of Life	
Quality of life is a reflection of general well-being and the degree to which community members are healthy, comfortable, welcomed, included, and able to enjoy the activities of daily living.	
Health, Wellbeing, and Social Services	
Improve access to behavioral, mental, and physical health and social services and amenities to address identified issues and promote wellbeing in the region.	
Diversity, Equity, and Inclusivity	
Promote diversity, equity, and inclusivity through community awareness training, targeted events, and expanded opportunities for diverse interests.	
Mobility	
Improve and expand access to, and all-ability accommodations for, alternative modes of travel including public transit, cycling, and walking amenities and services.	
Educational, Historical, and Cultural Amenities	
Promote educational and cultural opportunities, in coordination with community partners, and provide for the preservation and restoration of historic buildings and the protection of archaeological sites.	X
Open Space, Parks, and Recreation	
Manage County open space and maintain and improve parks and recreation facilities, trails, and amenities as defined by adopted plans and approved projects.	
Public Safety	
Ensure overall community safety through proactive and sustained implementation of police, fire hazard mitigation, and emergency response plans.	
Environmental Stewardship	
Environmental stewardship is the responsible use and protection of the natural environment through active participation in conservation efforts and sustainable practices in coordination with community and organizational partners.	
Natural Resource Protection	
Take actions to protect the wildlife and wildland interface, safeguard water, and mitigate tree loss in the community.	
Greenhouse Gas Reduction	
Establish targets for achieving net-zero greenhouse gas emissions and integrate sustainability and resiliency practices into County policies and operations.	
Carbon-Neutral Energy Supply	
Achieve carbon neutrality in electrical supply by 2040 through diversified carbon-free electric sourcing and phase out natural gas supply by 2070 through energy-efficient, all-electric buildings.	
Water Conservation	
Reduce potable water use and increase non-potable water use and water harvesting for irrigation where suitable.	
Waste Management	
Manage waste responsibly by diversion of solid waste from landfills through recycling, re-use, composting, and waste reduction programs and zero-waste education campaigns; and pursue efficient long-term solutions for disposal of solid waste.	



County of Los Alamos

Staff Report

June 18, 2024

Los Alamos, NM 87544
www.losalamosnm.us

Agenda No.: A.

Index (Council Goals): Quality Governance - Intergovernmental and Regional Relations

Presenters: Danielle Duran, Intergovernmental Affairs Manager and Anne Laurent, County Manager

Legislative File: 18755-24

Title

Quarterly Briefing by County Intergovernmental Affairs Manager on Current Regional and Intergovernmental Issues

Attachments

- A - Regional and Intergovernmental Update June 18 2024
- B - Regional Activities Worksheet

Regional and Intergovernmental Update

Los Alamos County Council

June 18, 2024

Regional Activities

Regional Roundtable Team

- City of Espanola
- Rio Arriba County
- Broadband Agreements
- Landfill Opportunities
- RDC
- Housing, Housing Insecurity, Homelessness
- Partnerships, agreements, and legislative agendas

Intergovernmental Activities

- State Interim Legislative Committees
- DOE grant
- NACo resolutions and amendments
- NMED

Regional Activities Work Sheet

Category	Scope, Stated Problem, Needs, and Specific Definition of Support from LAC	Related LAC Department or Program/Project	External Organizations or plans associated with issue	Current LAC Actions or Plans	Timeline	Notes	Additional budget
Housing	Increased Housing Needs based on increased LANL employment	CDD, CMO	Planning phase - Santa Fe County, Rio Arriba County, Sandoval County, City of Espanola	Planning a meeting with neighboring entities to discuss a housing summit - letter to other County Managers indicating a proposed date and agenda will be sent.	Immediate Planning - 3 to 6 months	A summit would take 6 to 10 months to plan and execute. Letter to neighboring Counties' Management will include a proposed place and date. Some topics include lack of developers, construction workers, housing for construction workers, regulations materials and transportation etc. Dan Osborn is working on the state accepting 120% of AMI	
	Missing Middle and Workforce Housing	CDD, CMO					
	Housing Insecurity	CSD					
	Homelessness	CSD	City of Santa Fe, County of Santa Fe, Rio Arriba County, and Rio Arriba County, City of Espanola	Meet regularly to find places these experiencing emergency and chronic housing challenges to find suitable	On going	Christine Archuleta with the Espanola Area Santa Fe Civic has walk in and virtual meetings to help with matching tenants with landlords that will accept	
Operational and Infrastructure Needs for Improved Quality of Life	Operational Capacity issues in neighboring communities	CMO, PW/Progress through Partnering	Santa Fe, Espanola, Rio Arriba, San Ildefonso, and possibly others - Also APA, our heavy equipment trainers, etc.	Intergov. Mgr. will discuss training and "deepening the bench" with NMML, NM Counties, and DFA	Unknown	Additional programs/increasing budget/aligning program with regional needs, includes need for training	
	Middle and last-mile broadband	CMO, DPU				LAC Council agreed to provide the match funds for the San Ildefonso BEAD grant application if awarded. San Ildefonso Services and DPU have a contract for approval on the conduit placement under St. Hwy. 4 as waterline work is being completed	
	Landfill	PW		Neighboring communities need time to respond			
	Additional infrastructure funding is needed or matching funds	CMO, PW	Rio Arriba County and City of Espanola	Touched on subject - interest exists		City of Espanola will be presenting a new project to LAC Council on 6/18.	
Transportation	Regional Transportation Improvements - Traffic in the Santa Fe - LAC/Rio Arriba - LAC is congested and dangerous	CDD, PW	LANL/Triad, Santa Fe County, Pueblo of Pojoaque, Pueblo of San Ildefonso, NCRTD, NMDOT, Rio Arriba County, City of Espanola			LANL has started rapid bus service from San Felipe and from Pojoaque. They are also re-constructing the current transit hub. The LAC Transit Hub will be revisited. Sustainability and emissions area another factor for consideration	
Energy Needs	Solar energy	DPU, CMO	Pueblo de San Ildefonso	Possible building solar field in next 3 years. Tour was attended and DPU continues	3 - 7 years		
	Climate pollution reduction grant	CMO	Albuquerque, Las Cruces, etc.			Fiscal agent	
Regional Planning	Current REDI Plan -	CDD, CMO		Council has requested a presentation from the RDC Exec. Dir.			
	Rio Grande Hiking Trail	CSD	EDD Outdoor Recreation			LAC could add area below the Bluffs but all activity is now concentrated on the State's efforts	
Workforce	Shortage in certain industry workforce	CDD	Communities of Excellence, workforce training program and partnership expansion.	Looking for partnering and potentially legislative opportunities to address this need		requires trainers and acceptance by regulators and hiring employers	
Health and Medicine	Regional healthcare and access to doctors	CMO, CDD, CSD		State and federal legislative issue		An issue we would like to see addressed	
	Acute substance abuse treatment (detox;	CSD	Rio Arriba County	MOA for (1) beds at treatment facility	On going		
	Ongoing Mental Health and substance use	CSD	Providers in City of Santa Fe,	Explore MOAs for treatment options	on going		
	Transportation for medical treatment (particularly for older adults)	CSD	Hospitals and medical providers located in Santa Fe, Rio Arriba	Explore options to meet additional transport needs	early discussions		

as of June 6, 2024



County of Los Alamos

Staff Report

June 18, 2024

Los Alamos, NM 87544
www.losalamosnm.us

Agenda No.: B.

Index (Council Goals): Economic Vitality - Community Broadband; Economic Vitality - Downtown Revitalization; Economic Vitality - Housing ; Economic Vitality - Local Business; Economic Vitality - Tourism and Special Events

Presenters: Paul Andrus, Community Development Director and Anne Laurent, County Manager

Legislative File: 18568-24

Title

Overview of Council Strategic Goal-Economic Vitality

Body

Council has asked that staff give an overview of each of the five strategic goals at Work Sessions throughout the year. This presentation (Attachment A) gives an overview of the Economic Vitality goal.

Attachments

A -Economic Vitality Presentation

Update on Council Strategic Goal: Economic Vitality



LOS ALAMOS
where discoveries are made
visitlosalamos.org



June 18, 2024

ATTACHMENT A

2024 Strategic Leadership Plan



ATTACHMENT A

Economic Vitality

- Increase the capacity for new housing development and the amount and variety of housing types to meet the needs of a changing and growing population, particularly middle and lower-income households.
- Encourage the retention of existing businesses, facilitate the startup of new businesses, and assist in opportunities for business growth.
- Revitalize the downtown areas of Los Alamos and White Rock by facilitating development opportunities in accordance with the downtown master plans.
- Sponsor special events, support major employer and community events, and promote tourism by enhancing amenities, utilizing facilities and contract services, and encouraging overnight stays.
- Provide community broadband as a basic essential service that will enable reliable high-speed internet services throughout the County at competitive pricing.

Housing

Goals

- Continue to implement the Home Renewal and Home Buyer programs and report use statistics annually
- Update the Affordable Housing Plan by December 2024
- Solicit partnership opportunities that will produce new workforce, senior and/or student housing unit residential or mixed use developments for the 20th Street and DP Road (A-8-a) properties
- support the public schools in evaluating their land for potential workforce housing and mixed-use development opportunities with a priority focus on North Mesa property

Actions

- Finalizing RFP for housing program services, planning fall of 2024
- Affordable Housing Plan draft complete, next steps include finalization, MFA approval, council approval
- 20th street draft PSA in negotiation; A-8-a to be solicited by end of year 2024
- North Mesa project in traffic and utilities impact analysis stage due Sept 2024

Local Business

Goals

- Distribute ARPA funds to eligible local businesses and complete award of funds by September 2024
- Construct DP Road and utility infrastructure project in 2024
- Engage with local business owners and connect business needs with potential funding opportunities and support
- Engage, support and provide opportunities for concessionaires on county-owned property

Actions

ARPA – total budget \$1.4 million

- \$966,063 expended to date
- \$245,509 encumbered and being paid out to businesses
- \$165,795 remaining with sufficient projected need to obligate and spend full balance by September
- DP Road construction to begin in June
- Made approx. 61+ business outreach contacts
- Provided support to \$100k grant award for local business
- Mobile Food Vending Friendly Spaces
- Development Handbook
- Pre-application meetings

Downtown Revitalization

Goals

- Update sign code
- Support redevelopment with the White Rock Metropolitan Redevelopment Area (MRA) through Private Public Partnerships and public infrastructure development
- Design and construct Deacon Street project in coordination with adjacent property redevelopment
- Encourage redevelopment of vacant or underutilized properties in accordance with the Downtown Master Plans and 2022 adopted Development Code

Actions

- Sign code updated as part of Chapter 16 Adoption – some cleanup required by end of 2024
- Mari Mac site owners looking at possible partnership financing opportunities with County
- Hilltop site now the UC Guesthouse project
- MRA- LA East Designation underway
- Planning and Zoning Application for extension of LA downtown zoning in progress

Tourism

Goals

- Partner and support ongoing annual and new seasonal events such as ScienceFest, summer concert series and recreation tournaments
- Increase camping and ski tourism by constructing a new water line to the Pajarito Mountain in 2025
- Promote the Fuller Lodge Historic District and walking tour (public) access long-term to the Manhattan Project National Historical Park Sites
- Make progress implementing the Tourism Plan - specifically wayfinding and White Rock Visitor Center improvements

Actions

- Launched redesign of VisitLosAlamos.org in June 2024
- Generated organic news stories through press releases
- Pajarito Mountain project estimated to begin
Created a variety of advertisements, advertorials, and articles including the following publications:
 - Arizona Diamondback Yearbook
 - Texas Rangers Yearbook
 - New Mexico Magazine
 - ABQ Journal 101 Things to Do This Summer
- Historic walking tour in progress (Aug 2024)
- WRVC improvements in progress

Metropolitan Redevelopment Area

- Establishes the boundary of a specific area that meets certain criteria that allows for public private partnerships for redevelopment projects
- A revitalization strategic plan that identifies the municipality intent to focus or provide access to redevelopment tools within a specific area – provides for public input
- Requires a partner (private sector) that has financial resources to contribute
- Projects or activities that the County would participate in would have to show a public benefit, e.g. demolition of dilapidated buildings, modernization of public infrastructure
- The criteria that the plan utilizes when establishing the boundaries includes:
 - **Vacant and Underutilized Properties:** High levels of vacant storefronts, especially in the former Mari Mac Shopping Village, inhibit growth.
 - **Low Commercial Activity:** Persistent challenges in attracting and retaining tenants has negatively impacted downtown economic vitality.
 - **Deteriorating Structures:** Many buildings are in poor condition and need updates to attract new tenants and investments.
 - **Deteriorating Infrastructure:** Issues include outdated narrow sidewalks, unmaintained pavement and landscaping, and deficient access to commercial properties.

MRA

As a tool to support development – dependent on the particular project:

- Issuance of Revenue Bonds
- Programs that address blight, such as façade improvements
- State/Federal Brownfield funding opportunities
- NMMFA Low Income Housing Tax Credits bonus points
- Property Tax deferrals or credits
- Tax Increment Financing (TIF) Districts

What it is not:

- Superseding of existing zoning laws
- A mechanism for raising or lowering taxes
- An obligation for the County to participate or partner with any proposed projects within the district
- Negatively impact property values
- Enable eminent domain
- A financial “silver bullet” without obligations for the county or its partners

MRA LA East Process

- Feb 2024 – Council directed staff to prepare resolution to start the process of establishing MRA in Townsite
- May 2024 – Presentation, Q&A Meeting with MRA area and adjacent property owners
- May 2024 - MRA Designation Report presented to Council
- June 27 – Public Meeting at Fuller Lodge
- TBD – Public Hearing with County Council and Adoption

Broadband

- **Community Broadband Network (CBN) Project**
 - RFP for Design/Build and Operate a CBN in final stages; negotiating final agreements for Council Consideration Summer 2024
- **Middle-Mile**
 - Council authorized \$2M matching funds for San Ildefonso Services BEAD grant; awaiting grant award recipients announcements (anticipated end of June)
 - Provided draft agreement for San Ildefonso Services to add fiber conduits and handholds as part of the SR4 waterline replacement project (Summer/Fall 2024)

Questions?