



County of Los Alamos

BCC Meeting Minutes

Environmental Sustainability Board

1000 Central Avenue
Los Alamos, NM 87544

Shannon Blair, Chair; Sue Barns, Vice-Chair; Joseph Chandler; Jyl DeHaven; Hermann Geppert-Kleinrath, and Rebecca Paley-Williams, Members

Thursday, May 15, 2025

5:30 PM

1000 Central Avenue, Council Chambers
and Zoom

NOTE: This meeting is in person and open to the public. However, for convenience, the following Zoom meeting link and/or telephone call in numbers may be used for public viewing and participation.

Please click this URL to join. <https://us02web.zoom.us/j/85656951187> Or
One tap mobile:

+17193594580,,85656951187# US

+16694449171,,85656951187# US

1. CALL TO ORDER - ROLL CALL

5:31 p.m.

2. PUBLIC COMMENT

Michael Dempsey commented on astroturf and doesn't want it in White Rock. He mentioned it was not ecologically sound.

3. APPROVAL OF AGENDA

Motion to approve the agenda by Member DeHaven second by Member Geppert-Kleinrath the motion passed unanimously.

4. APPROVAL OF MINUTES

[20198-25](#) Approval of April 17, 2025, Environmental Sustainability Board Minutes

Presenters: Shannon Blair

Motion to approve the minutes of April 17, 2025, by Member Barns, second by Member DeHaven the motion passed unanimously.

5. BOARD BUSINESS

[20197-25](#) Discuss and Appoint Liaison Assignments

Presenters: Shannon Blair

A motion for the Environmental Sustainability Board appoints member Sue Barns to the Board of Public Utilities sharing assignment with Chair Blair by Member Barns, second by Member Geppert-Kleinrath the motion passed unanimously.

20201-25

LAC Energy Management Program Proposal and Net Zero Airport Initiative
The Board was very interested in the findings and would like to support this initiative.

Presenters: Shannon Blair

6. REPORTS

A. Chair's Report - Shannon Blair

Chair Blair reminded everyone of vacancies, also gave a brief overview of the B&C luncheon.

1). Board of Public Utilities - Shannon Blair

The Board of Public Utilities approved their budget, got approval for the Trinity Drive gas and water lines project.

2). Transportation Board - Hermann Geppert

Member Geppert-Kleinrath reported that he attended the May Transportation Board, there were three topics, 1) the Canyon Rim Trail is moving forward and they want to start up to 90% completion, extended from Smith's to 15th Street, then further to 20th Street, 2) the ACT-Fleet Transition Plan, the Hydrogen to EV Ratio, buses have been ordered and have been delayed, and 3) crossings, small but constant request for crossings, problem being that most crossings that people are asking for aren't crossing that wouldn't get enough use therefore do not warrant having a crossing in certain areas.

3). Parks and Recreation Board - Shannon Blair

Chair Blair gave an update on the Park and Recreation Board meeting, PRB activated a Park Bike working group, pointed towards implementing a Bike Park in town. Also, there is also a working group for the North Mesa Master Plan.

4). Health Council - Jyl DeHaven

Member DeHaven reported that the Los Alamos County Health Council spent a lot of time on suicide prevention and how to they handle 988 suicide calls, that has escalated into a working group for the health council that will designing and building a road map as to what are the needs in Los Alamos that fall under Social Services and of those needs which have to be in a physical location. The goal is that by the end of the summer they can discuss the actual logistics of services provided and the needs and wants.

5). County Council Liaison - Ryn Herrmann

Councilor Herrmann gave some highlights on Council Meetings, one being an interesting proclamation on the Cerro Grande Fire – 25 Years ago, the County has invited the community by honoring this event by sharing memories, photos, videos of the Cerro Grande Fire. Had an overview of the 2025 Legislative Session by Representative Christine Chandler. Gave an update on the local small business engagement working group, Councilor's Ryt, Councilor Reagor and Councilor Herrmann have been meeting with property owners to chat about LEDA for retail, attending Los Alamos Coalition meetings, and meeting with small business owners. Los Alamos County recently signed an MOU with a group called Cities Work which is the institute for Justice Non-partisan Regulatory Consulting Initiative who are committed to increasing the economic opportunity and fostering entrepreneurship in cities across the country. They partner with cities to start a business all free of charge. By working free of charge, they pick the communities they want to work with, and Los Alamos is by far the smallest community they have ever worked with.

6). Inclusivity Task Force - Xeph Ivankovich and KokHeong McNaughton

None.

B. Working Groups Reports and Steering Committee

Sustainability Manager Angelica Gurule reported that LASA met and mostly discussed the upcoming Water Festival that was held on May 20th and 21st and the committee decided on the activity they were going to work on. Are collective working on an extreme heat information to share with the community, also talked about developing a welcoming kit for new residents to the community.

1). Los Alamos Sustainability Alliance - Sue Barns/Rebecca Paley-Williams

2). Education and Outreach Work Group - Angelica Gurule/Sue Barns

Member Barns reported that the Education and Outreach Working Group issued an RFP for Climate Marketing and Engagement Services, this is a Council initiative.

3). Community-Wide EV Study Working Group - Angelica Gurule/Sue Barns

Member Barns reported that the Community-Wide EV working group had a table at the Farmers Market asking attendees if they were interested in having an EV project. Sustainability Manager Gurule reported on the Community Visioning meeting held on May 12th for the EV project, had a presentation by Stantec, had stations where you could voice your priorities on the plan, another on concerns about owning an EV, and a station where you could put dots as to where you would like EV stations around town. Next step will be sending out a survey as to where the charges should be in the community. The draft of the plan will be presented to BPU, ESB and Council in October 2025.

4). Plastic Bag Fee Research Group - Shannon Blair, Hermann Geppert, Rebecca Paley-Williams

Chair Blair reported that the Plastic Bag working group met with the City of Las Cruces on May 9th to understand how they implemented the plastic bag fee. They are going to meet with Santa Fe to discuss their plastic bag ordinance. Member Paley-Williams is working on the legal review.

5). Bee City Los Alamos - Britton Donharl

Bee City report was sent via email and is attached to the minutes.

7. STAFF REPORT

[20199-25](#) Sustainability Manager Updates

Presenters: Angelica Gurule

Sustainability Manager Angelica Gurule reported that the Sustainability Newsletter subscribers continue to grow. The County is constructing EV infrastructure for 3 level two chargers and replacing the 3 existing chargers for a total of 6 chargers at the Muni. Bldg., design has been completed and is going out for bid. The council has given funding for energy audit services to the community will be developing scope of work. She thanked everyone for help with Earth Day events, asked for volunteers for the Farmers Market and volunteers needed for the Water Festival. She also shared the Residential Sustainability report

8. PREVIEW OF UPCOMING AGENDA ITEMS

Member Geppert-Kleinrath would like to present on the bicycle working group recommendations at the next meeting, and Airport Manager Gary Goddard will give an update in May of 2026. The plastic bag working group will provide an update in July 2025.

9. ADJOURNMENT**6:54 p.m.**

If you are an individual with a disability who is in need of a reader, amplifier, qualified sign language interpreter, or any other form of auxiliary aid or service to attend or participate in the hearing or meeting, please contact the County Human Resources Division at 662-8040 at least one week prior to the meeting or as soon as possible. Public documents, including the agenda and minutes can be provided in various accessible formats. Please contact the personnel in the Community Services Administration Office at 662-8163 if a summary or other type of accessible format is needed.

Shannon Blair, ESB Chair

7/25/2025

Shannon Blair, Environmental Sustainability Board Chair

Bee City Los Alamos Update
Environmentally Sustainability Board
May 15, 2025

Britton Donharl, Coordinator
coordinator@beecitylosalamos.org

Bee City Los Alamos activities in April:

- Participated the County Earth Day Festival, April 22
- Participated in the Los Alamos High School Eco Summit, April 25
- Participated in PEEC's 25th Anniversary Earth Day Festival, April 26

Ongoing and Upcoming events May:

- Voting on the Newsletter Name and Art Contest is open to the public; has been shared through PEEC and the Bee City Los Alamos newsletter subscriber list.
 - Vote here: <https://forms.gle/LeXeSMcvNUpjpi1r8>
- Volunteer Mulch Day was attended by 6 volunteers; weeds were pulled, last year's stems and stalk were removed, and a load of mulch was spread on the garden- garden looks good!
- Native Plant Sale Fundraiser is this Saturday, May 17th, 9:00 - 12:00pm, at the Los Alamos Nature Center

The application for a Backyard Pollinator Garden Program plant kit will be available in early June. Applicants will need to complete the application, and must have a planting location in the County to be considered for receiving a set of plants from the program. The number of plant kits to be distributed are limited, so the application is necessary. The application will be shared via the Bee City Los Alamos newsletter, PEEC.



Los Alamos County Fleet Conversion Plan and Community-Wide EV Charging Plan

Project Kick-Off Meeting





Agenda

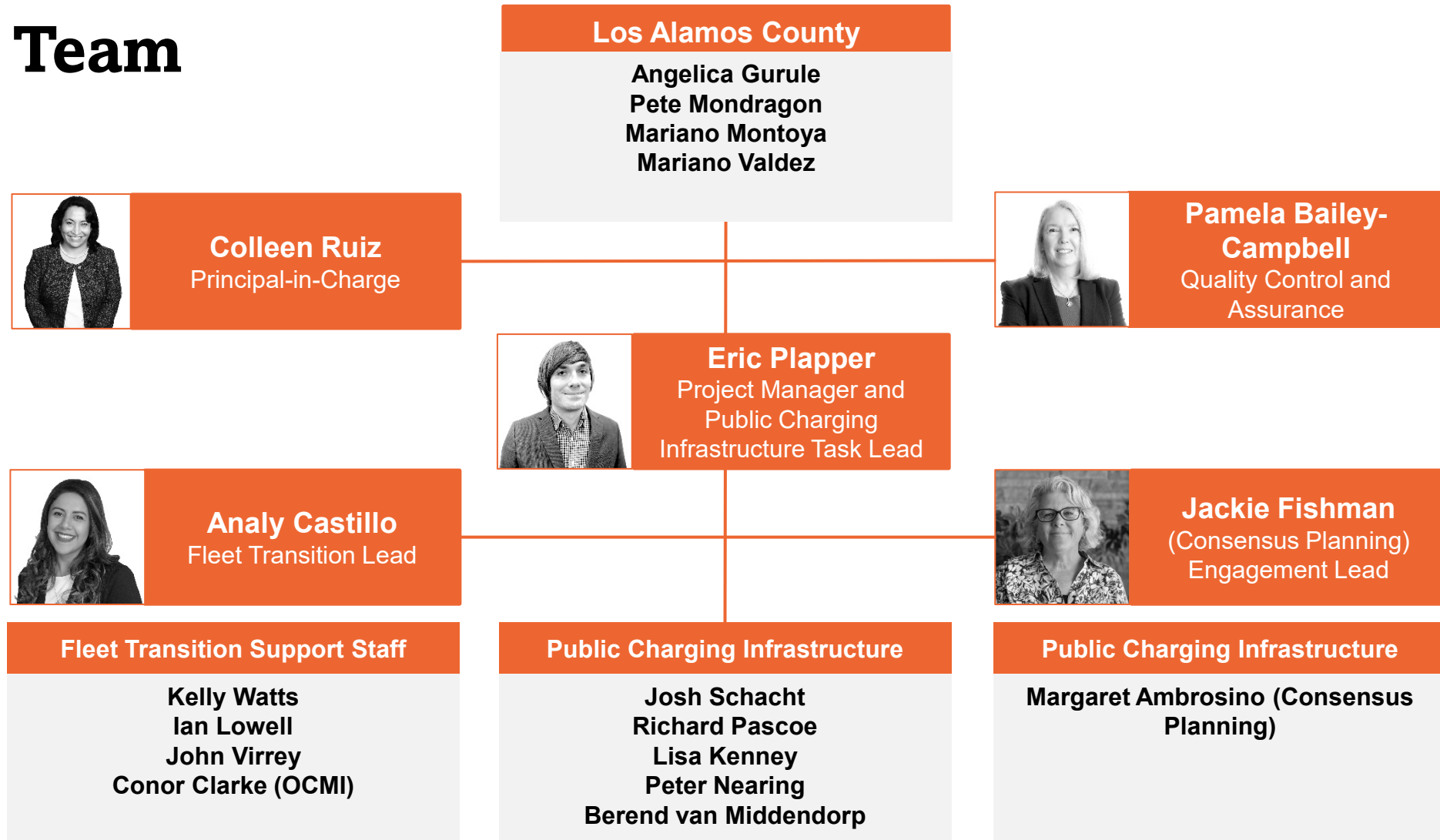
1. Project purpose
2. EV fleet conversion plan
3. EV charging plan
4. Engagement strategy
5. Deliverables and timeline



Project Purpose

1. Reduce greenhouse gas (GHG) emissions from the County fleet
2. Expand EV charging infrastructure
3. Engage County partners

Project Team



Fleet and Facilities Existing Conditions

Industry Review

- Vehicles
- Technologies
- Manufacturers
- Charging and fueling equipment

Site visits

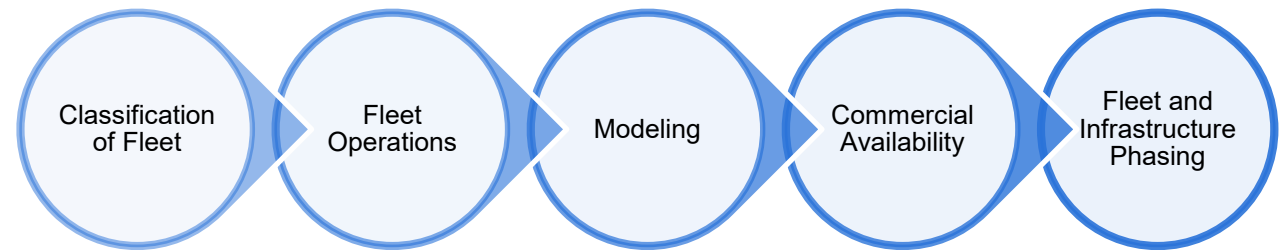
- Current fleet
- Vehicle and equipment replacement policies
- Facilities overview
- Site capacity
- Space constraints
- Charger locations
- Utility services





County Fleet Conversion Plan

- Vehicle performance and power modeling
 - Identify energy requirements and expected operational range
- Vehicle replacement schedule & rightsizing
- Facility assessment and infrastructure upgrades
- GHG emissions analysis
- Financial analysis
- **Task deliverable:** County Fleet Conversion Plan

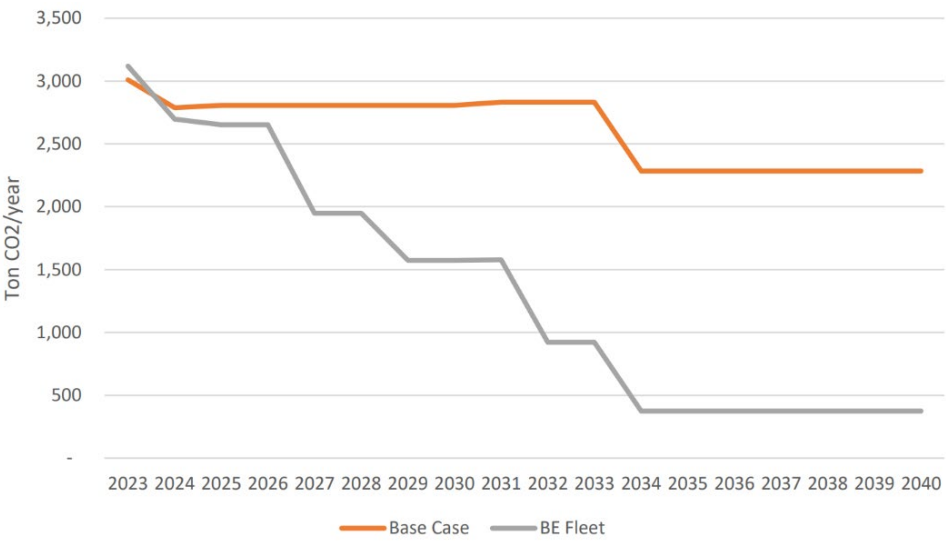




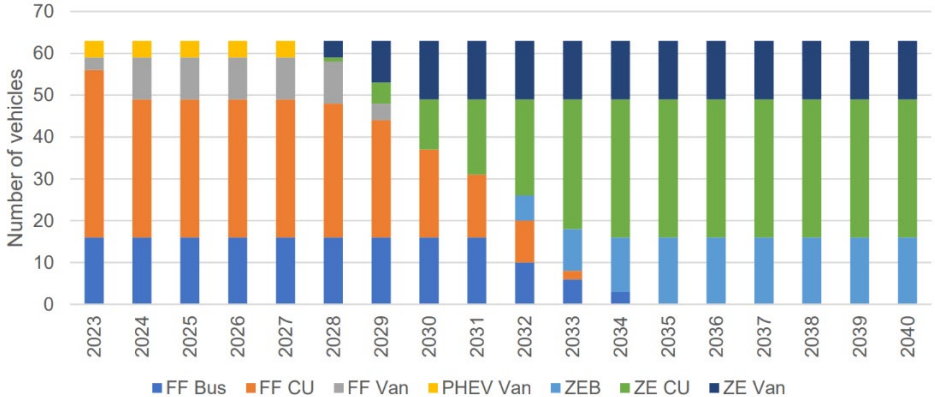
County Fleet Conversion Plan

Quantitative analysis of the fleet will inform the budget, timeline, and approach to EV conversion.

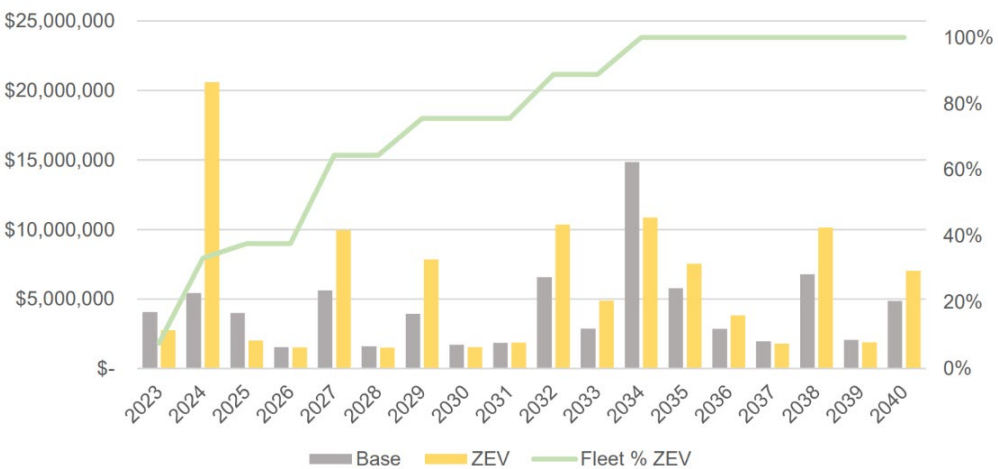
Example GHG Emissions Over Transition Timeline



Example Fleet Composition of Transition Timeline

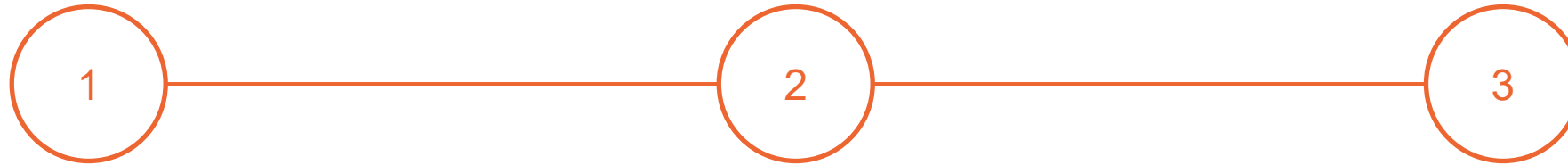


Financial Analysis Example





Community-Wide EV Charging Plan



Contextual Scan and Assessment:

- Relevant local plans
- Permitting, code, and zoning assessment

Deliverable: Contextual Scan and Assessment Technical Memo

Technical Analysis:

- Demand projection
- Suitability analysis
- Equity in the mapping process

Deliverable: Integrated Mapping Analysis Technical Memo

Implementation Plan:

- Business model assessment
- Public infrastructure costs and return on investment

Deliverables: Public Charging Infrastructure Readiness Plan

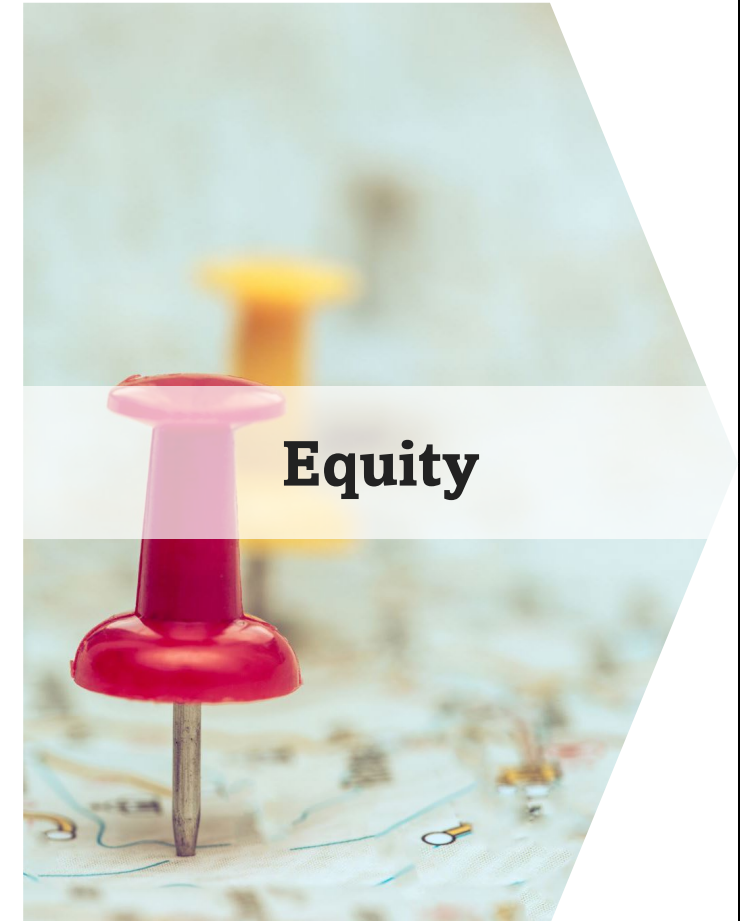
Relevant Local Plans

- Los Alamos County Climate Action Plan
- LAC Department of Public Utility Integrated Resource Plan
- New Mexico Clean Car Rule
- New Mexico Priority Climate Action Plan
- NMDOT New Mexico 2045 Plan
- New Mexico EV Infrastructure Deployment Plan
- Northern Pueblos Regional Transportation Plan
- LAC Code of Ordinances
- County Comprehensive Plan
- Procurement Policy



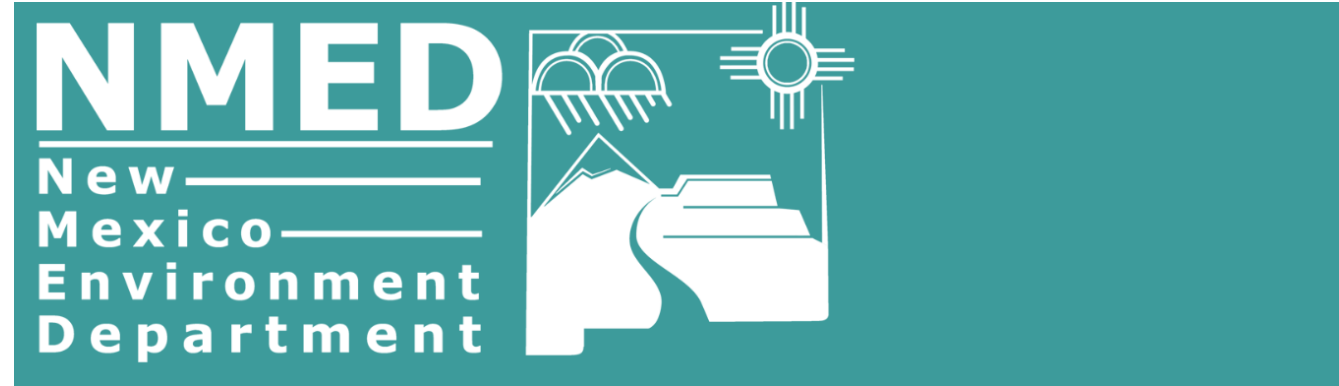


What are we looking for in an ideal charging network?

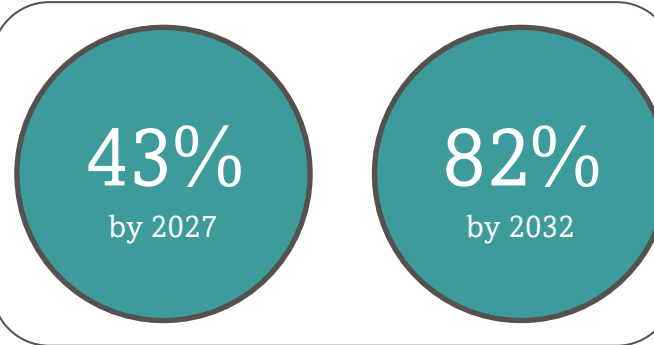


New Mexico Clean Car Rule

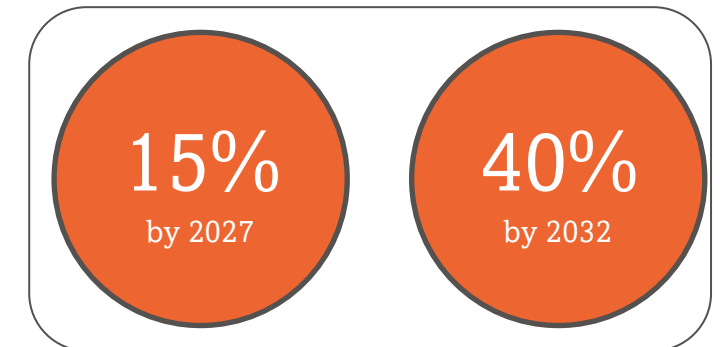
The New Mexico Clean Car Rule sets low-emission and zero-emission standards for new cars and trucks sold in the state, starting in 2026.



Light Duty Vehicles

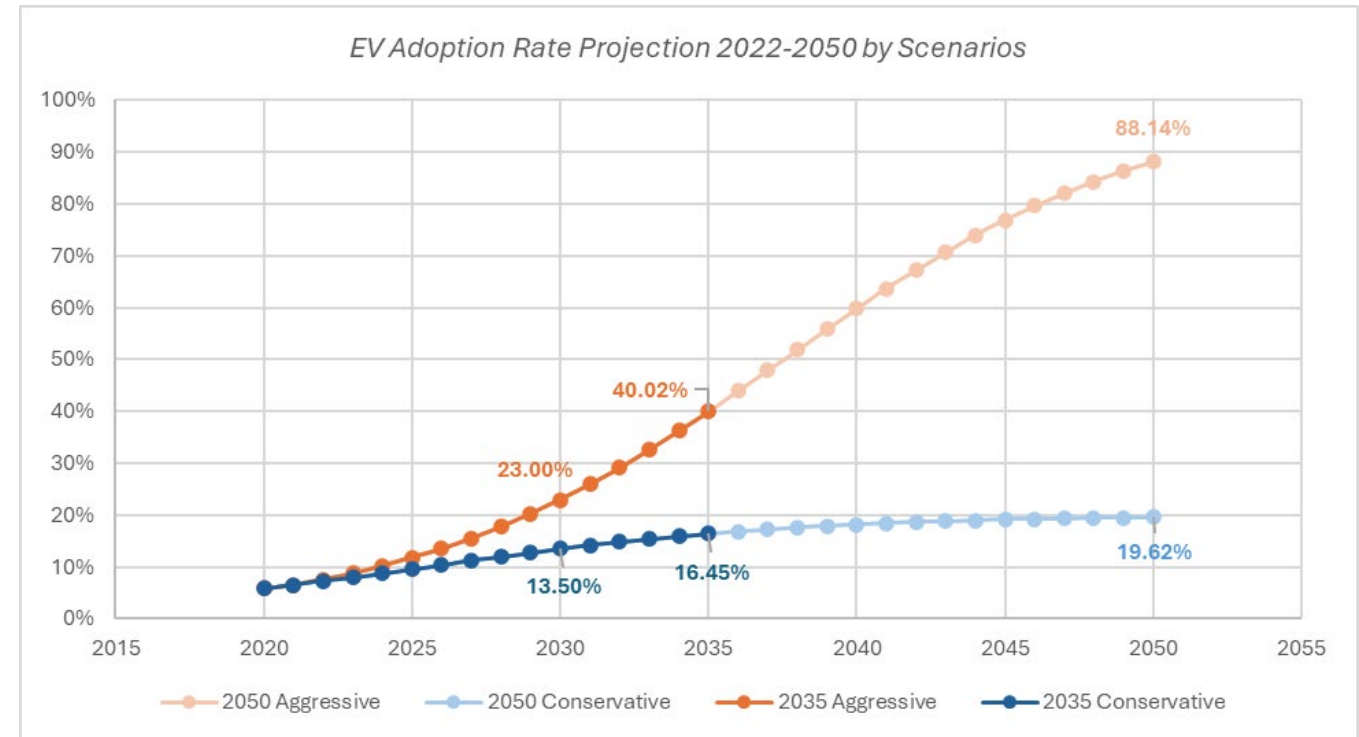


Trucks



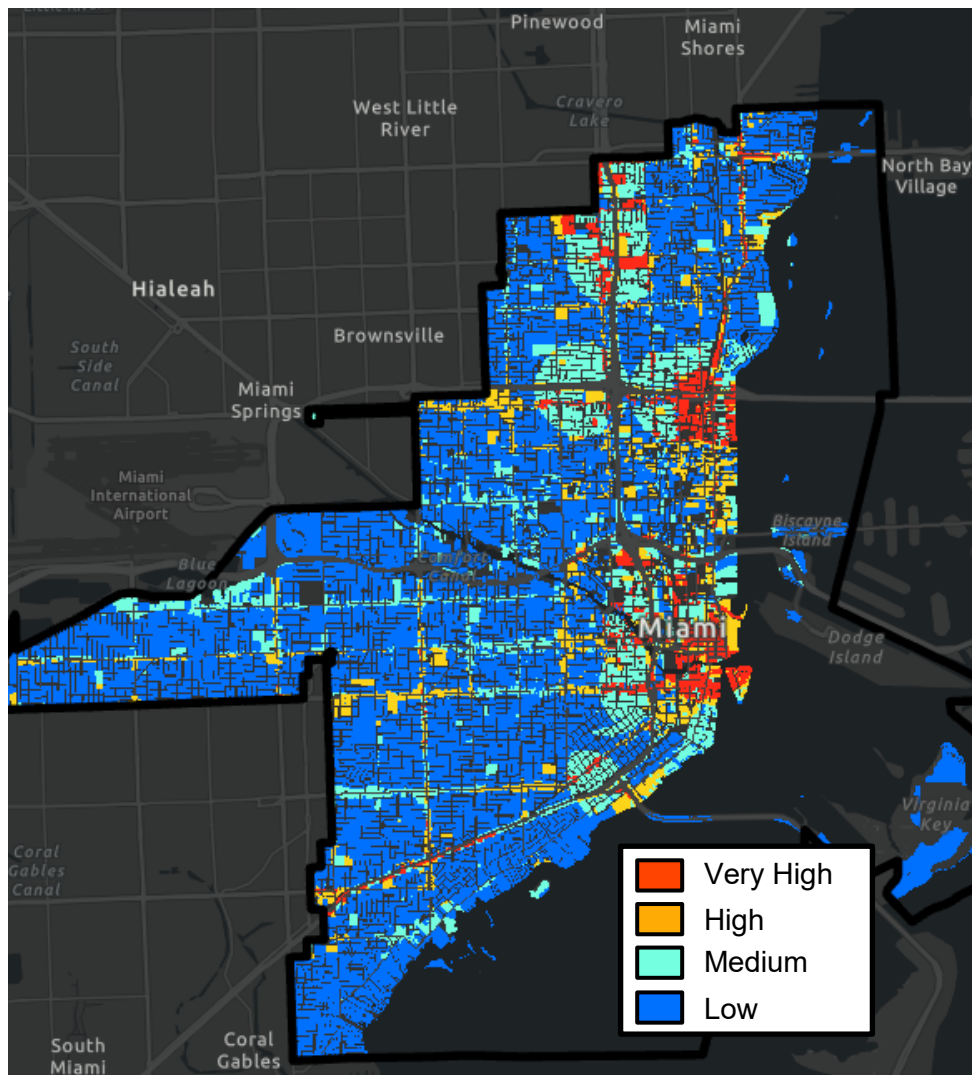


- Current registration
- Recent growth in registration
- Alignment with global and national trends
- Developing scenarios





- Memorial Garage



**Miami, FL Public Charging
Infrastructure Suitability Analysis**

Scenario Planning:

- Base case
- Underserved communities
- Corridor charging
- Commercial opportunities
- City-owned property



Public and Partner Engagement

Partner and Partner Engagement Plan:

- Partner registry
- Public engagement strategy
- Opportunities to leverage industry organizations

Partner Advisory Meetings:

- Virtual kick-off meeting with County Council
- Virtual presentation of draft fleet and public charging infrastructure plans to County Council, Environmental Sustainability Board, and Board of Public Utilities (one each)
- Virtual presentation of final deliverables to the entities above (one each)

Public Engagement:

- Leverage existing community-based organizations
- Administer statistically valid survey
- EV fact sheet
- One in-person community meeting
- One online community meeting
- Public and Partner Engagement Summary Technical Memorandum
- Opportunity to review and comment on final deliverables



Project Deliverables



Los Alamos EV Readiness Plan

Fleet Conversion Plan

Vehicle performance and power modeling

Vehicle replacement schedule

GHG emissions analysis

Facility assessment and infrastructure upgrades

Financial analysis

County fleet conversion plan

EV Charging Plan

Local plan review

Permitting, code, and zoning assessment

Demand projection

Suitability analysis

Equity in the mapping process

Integrated mapping analysis technical memo

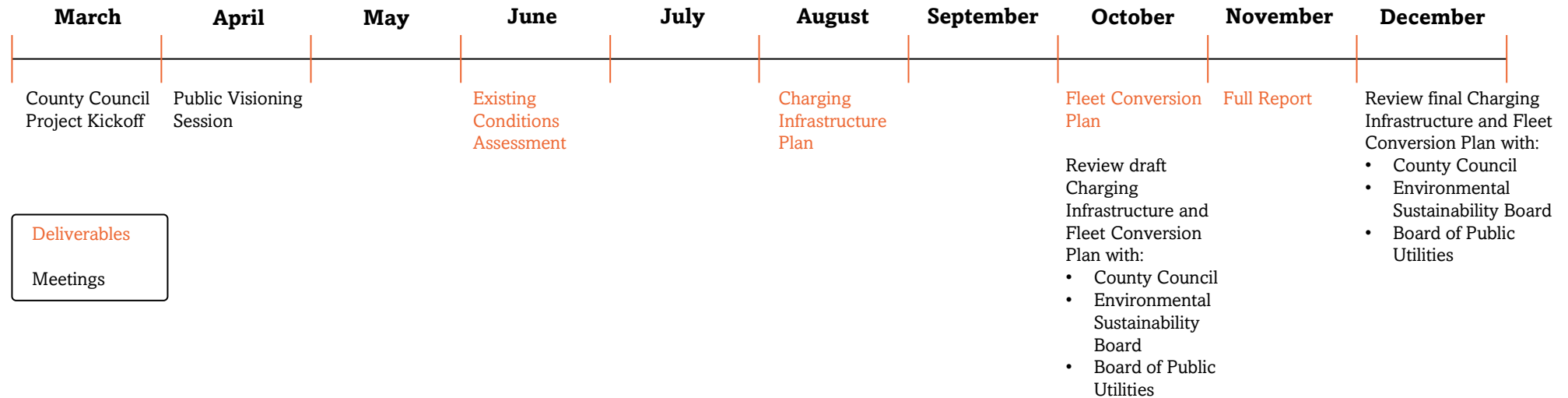
Business model assessment

Public infrastructure costs & ROI assessment

Public charging infrastructure final plan



Project Timeline



Next Steps



Community visioning session with the public



Fleet and facilities existing conditions assessment



Review of relevant plans and policies



Community-wide demand, suitability, and equity analysis



Questions
