

Appendix G – Trailhead Assessments



LOS ALAMOS COUNTY TRAILHEAD ASSESSMENT

Inventory Review Atlas

April 2022

Table of Contents

Table of Contents	3
i. Key Terminology	5
ii. Trailhead Assessment – Overall Approach	5
1. Canyon Rim Trailhead	7
2. Canyon Rim Trail Access Point	9
3. East Park Trailhead	11
4. Graduation Canyon Trail Access Point	13
5. Pueblo Canyon Rim Trail Access	15
6. Kinnikinnik Park Trailhead	17
7. Bell Trail Trailhead	19
8. Quemazon Trailhead	21
9. Perimeter Trail Access Point	23
10. Upper Pueblo Trail Access Point	25
11. Upper Pueblo Canyon Trail Access Point	27
12. North Pueblo Trail Access Point	29
13. Perimeter Trail Access Point	31
14. Mitchell Trailhead	33
15. Nina Marsh Tennis Court Trail Access Point	35
16. Upper Walnut Trail Access Point	37
17. Upper Walnut Trail Access Point (2)	39
18. Woodland Trailhead	41
19. Woodland Trail Access Point	43
20. Perimeter Trail Access Point	45
21. Rendija Canyon Trail Access Point	47
22. Name:	49
23. Bayo Canyon Trailhead	49
24. Pajarito Trailhead	51
25. Barranca Crossing Trail Access Point	53
26. Gonzales Road Trail Access Point	55
27. Deer Trap Trailhead	57
28. Bayo Canyon Trail Access Point	59
29. Kwage Mesa Trailhead	61
30. North Pueblo Bench Trail Access Point	63
31. Homestead Crossing Trail Access Point	65

32.	School Canyon Trail Access Point	67
33.	Homestead Crossing Trail Access Point.....	69
34.	Olive Street Trailhead	71
35.	South Pueblo Bench Trail Access Point	73
36.	Camp May Trailhead.....	75
37.	South Perimeter Trailhead	77
38.	Cañon del Valle Trail Access Point.....	79
39.	Perimeter Trail Access Point.....	81
40.	Ponderosa Trailhead.....	83
41.	Burnt Mesa Trailhead	85
42.	Old Road Trails Access Point.....	87
43.	Knife Edge Trail Access Point	89
44.	Powerline Point Trail Access Point	91
45.	Ridgeline-Potrillo Mesa Trail Access Point	93
46.	Water Canyon Overlook Trail Access Point	95
47.	Potrillo Canyon Loop Access Point	97
48.	White Rock Canyon Rim Trail Access Point	99
49.	Red Dot Trailhead.....	101
50.	Pinon Park Trail Access Point.....	103
51.	Cañada del Buey Trailhead #1	105
52.	State Road 4 Trail Access Point	107
53.	Mountain Meadows-Chamisa Trail Access Point	109
54.	Cañada del Buey Trail Access Point #2	111
55.	Blue Dot Trailhead	113

i. **Key Terminology**

Component	Definition
Directional Signage	Signage that directs trail users to the trail and provides general information on the trail direction, length, and connections to other trails.
Informational Kiosk	A kiosk that includes the trail name, general trail usage rules, operational announcements, and a trail overview map
Trail ID Signage	A sign that includes the trailhead name for a trailhead and the trail name for trail access points to the trailhead/trail access. The sign should be larger so that the trail access or trailhead can easily be distinguished and located.
Trail Access Point	A point of connection to a trail or trail system. A trail access point at minimum should include Directional Signage and a Trail ID Sign. Other amenities could include dog waste stations, trash receptacles, seating, and an informational kiosk.
Trail, Multi-Use	An accessible trail that is separated from the road and provides recreational opportunities or connection to walkers, bikers, rollerbladers, and equestrian users. Paths that make a circuit within a single site are "Loop Walks."
Trail, Primitive	A trail, unpaved, located within a park or natural area that provides recreational opportunities or connections to users. Minimal surface improvements that may or may not meet accessibility standards.
Trailhead	A designated staging area at a trail access point. The trailhead should include a Trail ID sign, Directional Signage, Informational Kiosk, parking, trash receptacles, and dog waste stations. Trailheads may also include restrooms, drinking water, shade, and seating.

ii. **Trailhead Assessment – Overall Approach**

Each trailhead or trail access point was scored in the following four (4) categories:

1. *Evaluation of Comfort and Convenience Features*
2. *Evaluation of Trailhead Design and Ambiance*
3. *Neighborhood Score*
4. *Community Score*

(1) Evaluation of Comfort and Convenience Features

This inventory evaluates features that provide comfort and convenience to the users. These are components that a user might not go to the trailhead specifically to use but are things which enhance the users' experience by making it a nicer place to be. The presence of features such as shade, seating, and restrooms have the effect of increasing the value of the trailhead or trail access point. Assessment includes documentation and evaluation of the following 11 components:

1. *Trail ID Signage*
2. *Parking*
3. *Directional Signage*
4. *Shade*
5. *Informational Kiosk*
6. *Trash Receptacles*
7. *Restrooms*

8. *Lights*
9. *Seating*
10. *Water Fountain*
11. *Dog Pick-Up Station*

Comfort and Convenience Features are scored using the following rating system:

0 = Not Functioning or Not Present; **1** = Below Expectations; **2** = Meets Expectations; **3** = Exceeds Expectations.

Overall Comfort and Convenience Score Rubric: 0 to 11 = 1.1; 12 – 24 = 1.2; 25 – 36 = 1.3

(2) Evaluation of Trailhead Design and Ambiance

Using the same scoring system that is used for components, the quality of overall *Design and Ambiance* was evaluated. The quality of the users' experience is enhanced by a pleasant setting and good design and diminished by a lack thereof. Good design not only makes a place look nice, but it also makes it feel safe and pleasant, and encourages people to visit more often and to stay longer.

Design and Ambiance are scored using the following rating system:

1 = Below Expectations; **2** = Meets Expectations; **3** = Exceeds Expectations

(3) Neighborhood Score

Each trailhead or trail access point was evaluated from the perspective of a resident *that lives nearby*. High scoring trailheads are easily accessible to pedestrians in the neighborhood and are unobtrusive to the surrounding neighborhood. Trailheads that do not have a high neighborhood score may not be located within walking distance of residents or may draw large crowds for which parking is not provided.

Neighborhood Score uses the following rating system:

1 = Below Expectations; **2** = Meets Expectations; **3** = Exceeds Expectations

(4) Community Score

Trailheads or trail access points were evaluated from the perspective of residents *in the greater community*. High scoring trailheads in this category may be unique within the recreation system, have a broad draw from throughout the community, have the capacity and associated facilities to serve larger crowds, or are in areas that are accessible only by car. For example, low scoring trailheads may have limited parking or controlled access for the broader community.

Community Score uses the following rating system:

1 = Below Expectations; **2** = Meets Expectations; **3** = Exceeds Expectations

(5) Determining an Overall Score for Each Site

In order to compare trailheads and trail access points to one another and develop a prioritized list for improvements, an overall trail score was assigned. This was developed using the following formula.

$$\text{Total Score} = (\text{Overall Comfort \& Convenience Score}) \times (\text{Design \& Ambiance Score}) \\ \times (\text{Average of Neighborhood \& Community Scores})$$

Name:

1. Canyon Rim Trailhead

Total Score: 6.0

East Road

Evaluation of Comfort and Convenience Features

Component	Count	Condition, Comfort & Convenience Score (0-3)
Trailhead Signage	1	2
Parking	1	2
Directional Signage	0	0
Shade	0	0
Informational Kiosk	1	1
Trash Receptacles	1	2
Restrooms	1	2
Lights	1	2
Seating	1	2
Water Fountain	0	0
Dog Pick-Up Station	1	2
TOTAL	8	15

Evaluation of Trailhead Design and Ambiance

	Overall Ambiance & Design Score (1-3)
Trailhead/Trail Access Point	2

Neighborhood & Community Score

Criteria	Neighborhood Score (1-3)	Community Score (1-3)
Location & Trail Access	2	2
Trail Connections	3	3
AVERAGE	2.5	

Comments:

- Bathrooms are not ADA accessible
- Ample parking area and convenient connection to trail that crosses E Rd (below-grade) to Co-op grocery store on north side
- Kiosk signage is weathered and hard to read

Recommended Classification (*Trailhead or Trail Access Point*):

Trailhead



Spacious parking lot includes ADA spot



Trailhead amenities; trail adopted by Co-op



Below-grade connection across East Rd (502)



Signage is weathered and text-heavy

Name:

2. Canyon Rim Trail Access Point

East Road near Fire Station

Total Score: 4.4

Evaluation of Comfort and Convenience Features

Component	Count	Condition, Comfort & Convenience (0-3)
Trailhead Signage	0	0
Parking	1	2
Directional Signage	0	0
Shade	1	2
Informational Kiosk	1	1
Trash Receptacles	1	2
Restrooms	0	0
Lights	0	0
Seating	1	2
Water Fountain	0	0
Dog Pick-Up Station	1	2
TOTAL	6	11

Evaluation of Trailhead Design and Ambiance

	Overall Ambiance & Design (1-3)
Trailhead/Trail Access Point	2

Neighborhood & Community Score

Criteria	Neighborhood Score (1-3)	Community Score (1-3)
Location & Trail Access	2	2
Trail Connections	2	2
AVERAGE	2	

Comments:

- ADA access ramp from nearby parking area
- Dense tree canopy creates a comfortable and scenic access point and seating area
- Unclear whether nearby parking at Fire Station is an intended shared use lot for trail access

Recommended Classification (*Trailhead or Trail Access Point*):

Trail Access Point



ADA access ramp



Access point with trail connection beyond



Scenic forest views and dense canopy



Unclear parking permission at Fire Station

Name:

3. East Park Trailhead

At East Park

Total Score: 5.5

Evaluation of Comfort and Convenience Features

Component	Count	Condition, Comfort & Convenience (0-3)
Trailhead Signage	1	2
Parking	1	2
Directional Signage	1	2
Shade	1	2
Informational Kiosk	1	1
Trash Receptacles	1	2
Restrooms	1	2
Lights	1	2
Seating	1	2
Water Fountain	0	0
Dog Pick-Up Station	1	2
TOTAL	10	19

Evaluation of Trailhead Design and Ambiance

	Overall Ambiance & Design (1-3)
Trailhead/Trail Access Point	2

Neighborhood & Community Score

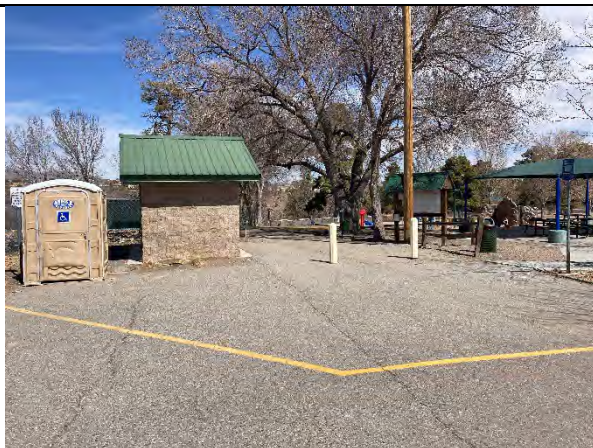
Criteria	Neighborhood Score (1-3)	Community Score (1-3)
Location & Trail Access	2	3
Trail Connections	2	2
AVERAGE	2.3	

Comments:

- Shared parking with Animal Shelter
- Shared amenities with East Park – shade structure, mini golf, playground

Recommended Classification (*Trailhead or Trail Access Point*):

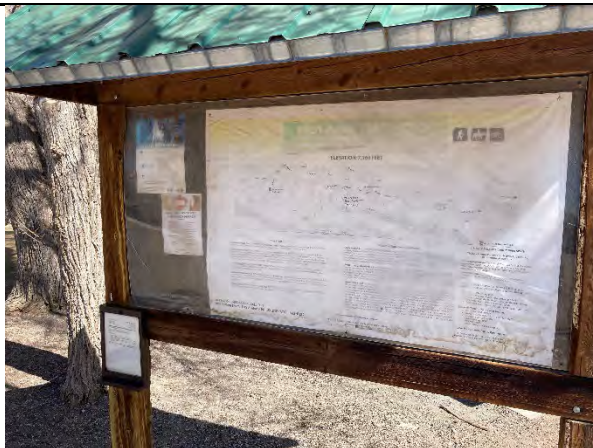
Trailhead



Trail access (beyond bollards)



Shared shade structure with park



Weathered, text heavy signage



Shared parking with Animal Shelter

Name:

4. Graduation Canyon Trail Access

At Pine St Playlot

Total Score: 2.2

Evaluation of Comfort and Convenience Features

Component	Count	Condition, Comfort & Convenience (0-3)
Trailhead Signage	0	0
Parking	1	2
Directional Signage	0	0
Shade	0	0
Informational Kiosk	0	0
Trash Receptacles	0	0
Restrooms	0	0
Lights	0	0
Seating	0	0
Water Fountain	0	0
Dog Pick-Up Station	0	0
TOTAL	1	2

Evaluation of Trailhead Design and Ambiance

	Overall Ambiance & Design (1-3)
Trailhead/Trail Access Point	1

Neighborhood & Community Score

Criteria	Neighborhood Score (1-3)	Community Score (1-3)
Location & Trail Access	3	1
Trail Connections	3	1
AVERAGE	2	

Comments:

- Limited signage and distinguishing trailhead features make this access point difficult to locate
- Unstriped cul-de-sac makes it unclear where parking is available for trail access
- Lack of standard trail/directional signage
- Primitive, rugged trail; yet very scenic

Recommended Classification (*Trailhead or Trail Access Point*):

Trail Access Point



Parking & trail access (next to orange fencing)



Trail access is unclear



Trail access sign



Rugged yet very scenic trail

Name:

5. Pueblo Canyon Rim Trail Access

Canyon Rd

Total Score: 2.2

Evaluation of Comfort and Convenience Features

Component	Count	Condition, Comfort & Convenience (0-3)
Trailhead Signage	0	0
Parking	1	1
Directional Signage	1	2
Shade	0	0
Informational Kiosk	0	0
Trash Receptacles	0	0
Restrooms	0	0
Lights	0	0
Seating	0	0
Water Fountain	0	0
Dog Pick-Up Station	0	0
TOTAL	2	3

Evaluation of Trailhead Design and Ambiance

	Overall Ambiance & Design (1-3)
Trailhead/Trail Access Point	1

Neighborhood & Community Score

Criteria	Neighborhood Score (1-3)	Community Score (1-3)
Location & Trail Access	2	2
Trail Connections	2	2
AVERAGE	2	

Comments:

- This access point does not show up as a GIS point
- Lack of standard trail/directional signage
- Undeveloped parking area

Recommended Classification (*Trailhead or Trail Access Point*):

Trail access Point



Dirt parking area



Directional signage

Name:

6. Kinnikinnik Park Trailhead

At Los Alamos County Aquatic Center

Total Score: 5.5

Evaluation of Comfort and Convenience Features

Component	Count	Condition, Comfort & Convenience (0-3)
Trailhead Signage	1	2
Parking	1	2
Directional Signage	1	2
Shade	1	2
Informational Kiosk	1	1
Trash Receptacles	1	1
Restrooms	1*	2
Lights	1	2
Seating	1	2
Water Fountain	0	0
Dog Pick-Up Station	0	0
TOTAL	9	16

* Restrooms associated with Aquatic Center

Evaluation of Trailhead Design and Ambiance

	Overall Ambiance & Design (1-3)
Trailhead/Trail Access Point	2

Neighborhood & Community Score

Criteria	Neighborhood Score (1-3)	Community Score (1-3)
Location & Trail Access	2	3
Trail Connections	2	2
AVERAGE	2.3	

Comments:

- Ample parking at Aquatic Center
- Rugged yet scenic loop trail
- Lack of directional signage at trailhead

Recommended Classification (*Trailhead* or *Trail Access Point*):

Trailhead



Trailhead kiosk and bench from parking lot



Scenic, primitive trail



Directional signage for Acid Canyon Loop Trail



Looking back at kiosk from crusher fine trail

Name:

7. Bell Trail Trailhead

On Omega Road

Total Score: 1.5

Evaluation of Comfort and Convenience Features

Component	Count	Condition, Comfort & Convenience (0-3)
Trailhead Signage	0	0
Parking	0	0
Directional Signage	0	0
Shade	0	0
Informational Kiosk	0	0
Trash Receptacles	0	0
Restrooms	0	0
Lights	0	0
Seating	0	0
Water Fountain	0	0
Dog Pick-Up Station	0	0
TOTAL	0	0

Evaluation of Trailhead Design and Ambiance

	Overall Ambiance & Design (1-3)
Trailhead/Trail Access Point	1

Neighborhood & Community Score

Criteria	Neighborhood Score (1-3)	Community Score (1-3)
Location & Trail Access	1	2
Trail Connections	1	2
AVERAGE	1.5	

Comments:

- Could not locate the trail access
- Lack of standard trail/directional signage
- Undeveloped parking area
- No trailhead amenities
- There is ample space to develop a trailhead staging area

Recommended Classification (*Trailhead or Trail Access Point*):

Trailhead



Could not locate the trail access

Name:

8. Quemazon Trailhead

At Quemazon Trail Rd, near Trinity Dr

Total Score: 4.4

Evaluation of Comfort and Convenience Features

Component	Count	Condition, Comfort & Convenience (0-3)
Trailhead Signage	1	2
Parking	1	2
Directional Signage	0	0
Shade	1	2
Informational Kiosk	1	2
Trash Receptacles	0	0
Restrooms	0	0
Lights	0	0
Seating	0	0
Water Fountain	0	0
Dog Pick-Up Station	0	0
TOTAL	4	8

Evaluation of Trailhead Design and Ambiance

	Overall Ambiance & Design (1-3)
Trailhead/Trail Access Point	2

Neighborhood & Community Score

Criteria	Neighborhood Score (1-3)	Community Score (1-3)
Location & Trail Access	2	2
Trail Connections	2	2
AVERAGE	2	

Comments:

- Rugged trail with mulched parking lot
- Lack of signage and distinguishing amenities make trail access difficult to locate
- With access to a number of trails west of town, this should be a high priority for amenity improvements that make it a trailhead rather than just a trail access point

Recommended Classification (*Trailhead or Trail Access Point*):

Trailhead



Sign from Quemazon Trail Road



Parking area



Kiosk and trail access



Kiosk with updated trail map

Name:

9. Perimeter Trail Access Point

At 4th St

Total Score: 1.9

Evaluation of Comfort and Convenience Features

Component	Count	Condition, Comfort & Convenience (0-3)
Trailhead Signage	0	0
Parking	0	0
Directional Signage	1	1
Shade	0	0
Informational Kiosk	0	0
Trash Receptacles	0	0
Restrooms	0	0
Lights	0	0
Seating	0	0
Water Fountain	0	0
Dog Pick-Up Station	0	0
TOTAL	1	1

Evaluation of Trailhead Design and Ambiance

	Overall Ambiance & Design (1-3)
Trailhead/Trail Access Point	1

Neighborhood & Community Score

Criteria	Neighborhood Score (1-3)	Community Score (1-3)
Location & Trail Access	2	1
Trail Connections	2	2
AVERAGE	1.75	

Comments:

- Stairs to trail access point
- Very minimal trail access point with on-street parking available
- Convenient for nearby neighbors to access trail system to the west

Recommended Classification (*Trailhead or Trail Access Point*):

Trail Access Point



Trail access view from 47th St



Trail sign and view of trail



Trail steps down from edge of road

Name:

10. Upper Pueblo Trail Access Point

On north side of North Rd

Total Score: 1.4

Evaluation of Comfort and Convenience Features

Component	Count	Condition, Comfort & Convenience (0-3)
Trailhead Signage	0	0
Parking	1	2
Directional Signage	1	1
Shade	0	0
Informational Kiosk	0	0
Trash Receptacles	0	0
Restrooms	0	0
Lights	0	0
Seating	0	0
Water Fountain	0	0
Dog Pick-Up Station	0	0
TOTAL	2	3

Evaluation of Trailhead Design and Ambiance

	Overall Ambiance & Design (1-3)
Trailhead/Trail Access Point	1

Neighborhood & Community Score

Criteria	Neighborhood Score (1-3)	Community Score (1-3)
Location & Trail Access	1	1
Trail Connections	1	2
AVERAGE	1.25	

Comments:

- Scenic trail into canyon area
- Parking access located at intersection of N Rd & Diamond Dr making the access to the trail difficult
- Parking is limited

Recommended Classification (*Trailhead or Trail Access Point*):

Trail Access Point



No on- or off-street parking available



Paved drive leads to trail access



Scenic overlook at trail access; directional sign



View of trail looking west from access point

Name:

11. Upper Pueblo Canyon Trail Access Point

On west side of North Rd

Total Score: 1.1

Evaluation of Comfort and Convenience Features

Component	Count	Condition, Comfort & Convenience (0-3)
Trailhead Signage	0	0
Parking	1	1
Directional Signage	1	2
Shade	0	0
Informational Kiosk	0	0
Trash Receptacles	0	0
Restrooms	0	0
Lights	0	0
Seating	0	0
Water Fountain	0	0
Dog Pick-Up Station	0	0
TOTAL	2	3

Evaluation of Trailhead Design and Ambiance

	Overall Ambiance & Design (1-3)
Trailhead/Trail Access Point	1

Neighborhood & Community Score

Criteria	Neighborhood Score (1-3)	Community Score (1-3)
Location & Trail Access	1	1
Trail Connections	1	1
AVERAGE	1	

Comments:

- Scenic access point to upper canyon trails
- Undeveloped, small parking area
- Access to parking is difficult making access limited
- Lack of standard trail signage

Recommended Classification (*Trailhead or Trail Access Point*):

Trail Access Point



Gated pullout off N Rd



Walkup trail from pullout area



Trail access sign and trail beyond



Drainage feature just beyond access point

Name:

12. North Pueblo Trail Access Point

At 48th St

Total Score: 3.3

Evaluation of Comfort and Convenience Features

Component	Count	Condition, Comfort & Convenience (0-3)
Trailhead Signage	0	0
Parking	0	0
Directional Signage	1	2
Shade	0	0
Informational Kiosk	0	0
Trash Receptacles	0	0
Restrooms	0	0
Lights	0	0
Seating	0	0
Water Fountain	0	0
Dog Pick-Up Station	0	0
TOTAL	1	2

Evaluation of Trailhead Design and Ambiance

	Overall Ambiance & Design (1-3)
Trailhead/Trail Access Point	2

Neighborhood & Community Score

Criteria	Neighborhood Score (1-3)	Community Score (1-3)
Location & Trail Access	2	1
Trail Connections	2	1
AVERAGE	1.5	

Comments:

- Scenic access point to upper trails
- Limited signage and distinguishing trailhead features make this access point difficult to locate
- Lack of standard trail signage
- On-street parking

Recommended Classification (*Trailhead or Trail Access Point*):

Trail Access Point



Trail access from on-street parking on 48th St



Trail sign and view beyond

Name:

13. Perimeter Trail Access Point

From Yucca St

Total Score: 1.7

Evaluation of Comfort and Convenience Features

Component	Count	Condition, Comfort & Convenience (0-3)
Trailhead Signage	0	0
Parking	0	0
Directional Signage	1	1
Shade	0	0
Informational Kiosk	0	0
Trash Receptacles	0	0
Restrooms	0	0
Lights	0	0
Seating	0	0
Water Fountain	0	0
Dog Pick-Up Station	0	0
TOTAL	1	1

Evaluation of Trailhead Design and Ambiance

	Overall Ambiance & Design (1-3)
Trailhead/Trail Access Point	1

Neighborhood & Community Score

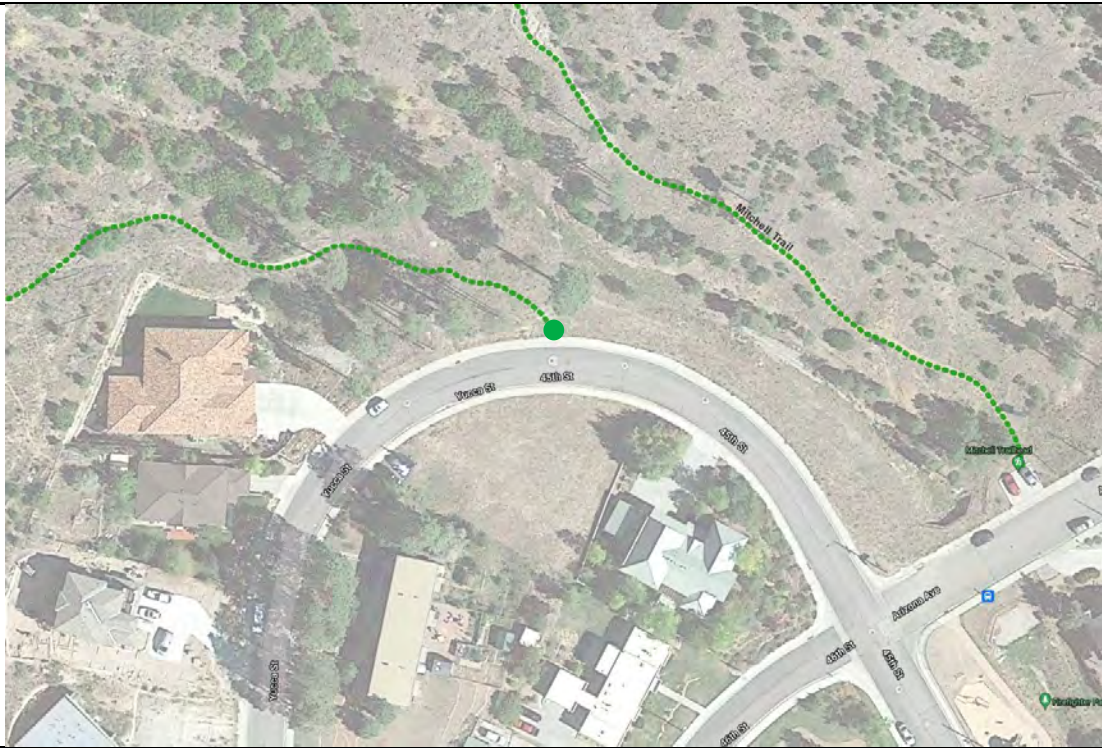
Criteria	Neighborhood Score (1-3)	Community Score (1-3)
Location & Trail Access	2	1
Trail Connections	2	1
AVERAGE	1.5	

Comments:

- Limited signage and distinguishing trailhead features make this access point difficult to locate
- On-street parking
- Lack of standard trail signage

Recommended Classification (*Trailhead or Trail Access Point*):

Trail Access Point



From on-street parking on Yucca/45th St



Directional signage

Name:

14. Mitchell Trailhead

On Arizona Ave

Total Score: 4.4

Evaluation of Comfort and Convenience Features

Component	Count	Condition, Comfort & Convenience (0-3)
Trailhead Signage	1	2
Parking	1	2
Directional Signage	1	2
Shade	1	2
Informational Kiosk	1	2
Trash Receptacles	0	0
Restrooms	0	0
Lights	0	0
Seating	1	1
Water Fountain	0	0
Dog Pick-Up Station	0	0
TOTAL	6	11

Evaluation of Trailhead Design and Ambiance

	Overall Ambiance & Design (1-3)
Trailhead/Trail Access Point	2

Neighborhood & Community Score

Criteria	Neighborhood Score (1-3)	Community Score (1-3)
Location & Trail Access	2	2
Trail Connections	2	2
AVERAGE	2	

Comments:

- Small but convenient trailhead for the northwest area of town
- Good shade coverage provided by established pines
- Two off-street parking spaces
- More seating could add comfort and provide a more useable trailhead

Recommended Classification (*Trailhead or Trail Access Point*):

Trailhead



Small concrete parking lot at trailhead



"Trailhead Parking Only" sign



Kiosk with updated trail map



"In memory of" seating just beyond trailhead

Name:

15. Nina Marsh Tennis Court Trail Access Point

Access to Upper Walnut Trail

Total Score: 1.4

Evaluation of Comfort and Convenience Features

Component	Count	Condition, Comfort & Convenience (0-3)
Trailhead Signage	0	0
Parking	1	1
Directional Signage	1	1
Shade	0	0
Informational Kiosk	0	0
Trash Receptacles	1	2
Restrooms	0	0
Lights	0	0
Seating	1	1
Water Fountain	0	0
Dog Pick-Up Station	0	0
TOTAL	4	5

Evaluation of Trailhead Design and Ambiance

	Overall Ambiance & Design (1-3)
Trailhead/Trail Access Point	1

Neighborhood & Community Score

Criteria	Neighborhood Score (1-3)	Community Score (1-3)
Location & Trail Access	1	1
Trail Connections	2	1
AVERAGE	1.25	

Comments:

- Minimal-amenity trail access point with shared parking at Nina Marsh tennis court
- Trail connects north and south ends of neighborhood with public tennis court; trailhead amenities could add functionality and presence to this small park
- Lack of standard trail signage
- Has space to accommodate a trailhead

Recommended Classification (*Trailhead or Trail Access Point*):

Trail Access Point



Unstriped parking at base of access road



Access road looking up from tennis court



Seating at tennis court



Limited trail signage at access point

Name:

16. Upper Walnut Trail Access Point

At 35th St

Total Score: 1.1

Evaluation of Comfort and Convenience Features

Component	Count	Condition, Comfort & Convenience (0-3)
Trailhead Signage	0	0
Parking	0	0
Directional Signage	0	0
Shade	0	0
Informational Kiosk	0	0
Trash Receptacles	0	0
Restrooms	0	0
Lights	0	0
Seating	0	0
Water Fountain	0	0
Dog Pick-Up Station	0	0
TOTAL	0	0

Evaluation of Trailhead Design and Ambiance

	Overall Ambiance & Design (1-3)
Trailhead/Trail Access Point	1

Neighborhood & Community Score

Criteria	Neighborhood Score (1-3)	Community Score (1-3)
Location & Trail Access	1	1
Trail Connections	1	1
AVERAGE	1	

Comments:

- Narrow access trail between private property
- Lack of signage and distinguishing amenities makes trail access difficult to locate
- Lack of standard trail/directional signage

Recommended Classification (*Trailhead or Trail Access Point*):

Trail Access Point



Narrow trail access off of 35th St

Name:

17. Upper Walnut Trail Access Point (2)

At upper 35th St

Total Score: 1.4

Evaluation of Comfort and Convenience Features

Component	Count	Condition, Comfort & Convenience (0-3)
Trailhead Signage	0	0
Parking	0	0
Directional Signage	1	2
Shade	0	0
Informational Kiosk	0	0
Trash Receptacles	0	0
Restrooms	0	0
Lights	0	0
Seating	0	0
Water Fountain	0	0
Dog Pick-Up Station	0	0
TOTAL	1	2

Evaluation of Trailhead Design and Ambiance

	Overall Ambiance & Design (1-3)
Trailhead/Trail Access Point	1

Neighborhood & Community Score

Criteria	Neighborhood Score (1-3)	Community Score (1-3)
Location & Trail Access	1	1
Trail Connections	2	1
AVERAGE	1.25	

Comments:

- Narrow access trail between private property
- Lack of standard trail signage

Recommended Classification (*Trailhead* or *Trail Access Point*):

Trail Access Point



Trail access from on-street parking on 35th



Narrow trail between residential properties



Small directional sign at access point



View of trail just beyond access point

Name:

18. Woodland Trailhead

At Arizona Ave

Total Score: 1.7

Evaluation of Comfort and Convenience Features

Component	Count	Condition, Comfort & Convenience (0-3)
Trailhead Signage	1	2
Parking	0	0
Directional Signage	1	1
Shade	0	0
Informational Kiosk	0	0
Trash Receptacles	0	0
Restrooms	0	0
Lights	0	0
Seating	0	0
Water Fountain	0	0
Dog Pick-Up Station	0	0
TOTAL	2	3

Evaluation of Trailhead Design and Ambiance

	Overall Ambiance & Design (1-3)
Trailhead/Trail Access Point	1

Neighborhood & Community Score

Criteria	Neighborhood Score (1-3)	Community Score (1-3)
Location & Trail Access	2	1
Trail Connections	2	1
AVERAGE	1.5	

Comments:

- Scenic overlook along with connections to trails north and south of Arizona Ave make this a high-priority candidate for trailhead improvements including off-street parking
- Lack of standard trail/directional signage

Recommended Classification (*Trailhead or Trail Access Point*):

Trailhead



On-street parking along Arizona Ave



Signage and scenic trail overlook beyond



Boulders mark opening to Woodland Trail



Trail access across the street (Arizona Ave)

Name:

19. Woodland Trail Access Point

At Fire Station on Range Rd

Total Score: 1.4

Evaluation of Comfort and Convenience Features

Component	Count	Condition, Comfort & Convenience (0-3)
Trailhead Signage	0	0
Parking	0	0
Directional Signage	1	2
Shade	0	0
Informational Kiosk	0	0
Trash Receptacles	0	0
Restrooms	0	0
Lights	0	0
Seating	0	0
Water Fountain	0	0
Dog Pick-Up Station	0	0
TOTAL	1	2

Evaluation of Trailhead Design and Ambiance

	Overall Ambiance & Design (1-3)
Trailhead/Trail Access Point	1

Neighborhood & Community Score

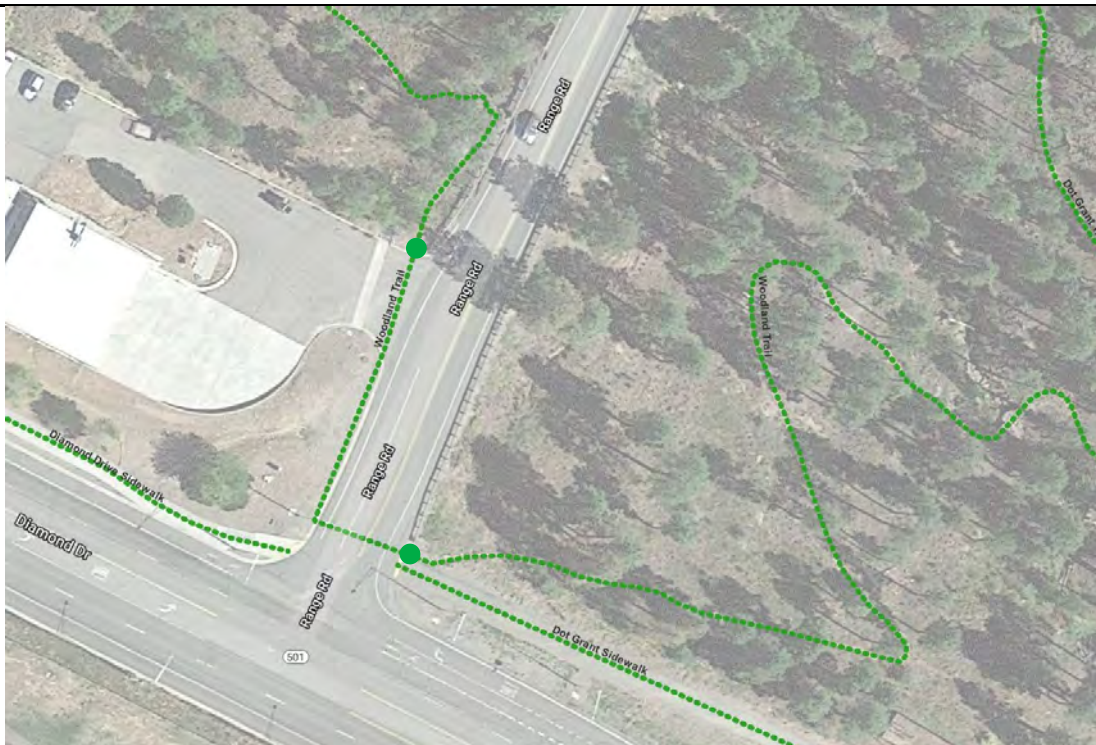
Criteria	Neighborhood Score (1-3)	Community Score (1-3)
Location & Trail Access	1	1
Trail Connections	2	1
AVERAGE	1.25	

Comments:

- Two minimal-amenity trail access points with potential shared parking at Fire Station
- North of parking lot access is to Woodland Trail; east across Range Rd access is to Dot Grant Trail and Dot Grant Sidewalk
- Lack of standard trail signage

Recommended Classification (*Trailhead or Trail Access Point*):

Trail Access Point



Woodland Trail access from Fire Station parking



Woodland Trail signage below access point



Dot Grant Trail access east of Range Rd



Dot Grant Trail sign

Name:

20. Perimeter Trail Access Point

Along Maple Dr

Total Score: 1.7

Evaluation of Comfort and Convenience Features

Component	Count	Condition, Comfort & Convenience (0-3)
Trailhead Signage	0	0
Parking	0	0
Directional Signage	1	2
Shade	0	0
Informational Kiosk	0	0
Trash Receptacles	0	0
Restrooms	0	0
Lights	0	0
Seating	0	0
Water Fountain	0	0
Dog Pick-Up Station	0	0
TOTAL	1	2

Evaluation of Trailhead Design and Ambiance

	Overall Ambiance & Design (1-3)
Trailhead/Trail Access Point	1

Neighborhood & Community Score

Criteria	Neighborhood Score (1-3)	Community Score (1-3)
Location & Trail Access	2	1
Trail Connections	2	1
AVERAGE	1.5	

Comments:

- Minimal-amenity trail access point
- On-street parking along Maple Dr is difficult due to road geometry
- Lack of standard trail signage

Recommended Classification (*Trailhead or Trail Access Point*):

Trail Access Point



Trail access from on-street parking on Maple Dr



Trail signage and rugged, scenic Perimeter Trail

Name:

21. Rendija Canyon Trail Access Point

Along Range Rd

Total Score: 1.7

Evaluation of Comfort and Convenience Features

Component	Count	Condition, Comfort & Convenience (0-3)
Trailhead Signage	0	0
Parking	1	2
Directional Signage	1	2
Shade	0	0
Informational Kiosk	0	0
Trash Receptacles	0	0
Restrooms	0	0
Lights	0	0
Seating	0	0
Water Fountain	0	0
Dog Pick-Up Station	0	0
TOTAL	2	4

Evaluation of Trailhead Design and Ambiance

	Overall Ambiance & Design (1-3)
Trailhead/Trail Access Point	1

Neighborhood & Community Score

Criteria	Neighborhood Score (1-3)	Community Score (1-3)
Location & Trail Access	1	1
Trail Connections	2	2
AVERAGE	1.5	

Comments:

- As a primary access point to the Rendija Canyon Trail and with an existing undeveloped parking area, this access point could be a high priority candidate for trailhead amenity improvements
- Currently this trailhead lacks most amenities and proper/standard signage

Recommended Classification (*Trailhead or Trail Access Point*):

Trailhead



Gravel and bare earth parking area



Trail access point from parking area



Directional signage at access point



Parking and old signs as seen from trail

22. Name:

23. Bayo Canyon Trailhead

Along N Mesa Rd

Total Score: 2.8

Evaluation of Comfort and Convenience Features

Component	Count	Condition, Comfort & Convenience (0-3)
Trailhead Signage	1	2
Parking	1	2
Directional Signage	1	2
Shade	1	2
Informational Kiosk	1	2
Trash Receptacles	0	0
Restrooms	0	0
Lights	0	0
Seating	0	0
Water Fountain	0	0
Dog Pick-Up Station	0	0
TOTAL	5	10

Evaluation of Trailhead Design and Ambiance

	Overall Ambiance & Design (1-3)
Trailhead/Trail Access Point	1

Neighborhood & Community Score

Criteria	Neighborhood Score (1-3)	Community Score (1-3)
Location & Trail Access	2	2
Trail Connections	3	3
AVERAGE	2.5	

Comments:

- Signage to trailhead is present heading west on N Mesa Rd but additional signage along Diamond Dr could help orient motorists
- Connection to San Ildefonso underpass serves as major connection to trails west of San Ildefonso Rd, making this a higher priority candidate for trailhead improvements like parking, seating, restrooms

Recommended Classification (*Trailhead or Trail Access Point*):

Trailhead



Sign along N Mesa Rd (heading west)



Gravel parking area



Kiosk with updated trail map



Connection to San Ildefonso ped underpass

Name:

24. Pajarito Trailhead

On Rendija Rd

Total Score: 2.8

Evaluation of Comfort and Convenience Features

Component	Count	Condition, Comfort & Convenience (0-3)
Trailhead Signage	1	1
Parking	1	2
Directional Signage	1	2
Shade	1	2
Informational Kiosk	1	1
Trash Receptacles	0	0
Restrooms	0	0
Lights	0	0
Seating	0	0
Water Fountain	0	0
Dog Pick-Up Station	0	0
TOTAL	5	8

Evaluation of Trailhead Design and Ambiance

	Overall Ambiance & Design (1-3)
Trailhead/Trail Access Point	2

Neighborhood & Community Score

Criteria	Neighborhood Score (1-3)	Community Score (1-3)
Location & Trail Access	2	2
Trail Connections	3	3
AVERAGE	2.5	

Comments:

- Large parking lot capable of handling group events
- Dense forest canopy surrounding trailhead creates a unique trailhead with a secluded forest feel
- Lack of standard signage and confusing access to trail

Recommended Classification (*Trailhead or Trail Access Point*):

Trailhead



Ample parking lot at trailhead



Kiosk sign at trail entrance - tells canyon history



Directional signage near trail entrance



Directional signage close up – Forest Map

Name:

25. Barranca Crossing Trail Access Point

Along Barranca Rd

Total Score: 2.2

Evaluation of Comfort and Convenience Features

Component	Count	Condition, Comfort & Convenience (0-3)
Trailhead Signage	0	0
Parking	0	0
Directional Signage	1	2
Shade	0	0
Informational Kiosk	0	0
Trash Receptacles	0	0
Restrooms	0	0
Lights	0	0
Seating	0	0
Water Fountain	0	0
Dog Pick-Up Station	0	0
TOTAL	1	2

Evaluation of Trailhead Design and Ambiance

	Overall Ambiance & Design (1-3)
Trailhead/Trail Access Point	1

Neighborhood & Community Score

Criteria	Neighborhood Score (1-3)	Community Score (1-3)
Location & Trail Access	2	2
Trail Connections	2	2
AVERAGE	2	

Comments:

- Minimal-amenity trail access point
- Lack of signage and distinguishing amenities make trail access difficult to locate

Recommended Classification (*Trailhead* or *Trail Access Point*):

Trail Access Point



On-street parking along Barranca Rd



Trail signage



Primitive dirt trail with signs of mtn bike use

Name:

26. Gonzales Road Trail Access Point

Along Barranca Rd

Total Score: 1.7

Evaluation of Comfort and Convenience Features

Component	Count	Condition, Comfort & Convenience (0-3)
Trailhead Signage	0	0
Parking	0	0
Directional Signage	1	2
Shade	0	0
Informational Kiosk	0	0
Trash Receptacles	0	0
Restrooms	0	0
Lights	0	0
Seating	0	0
Water Fountain	0	0
Dog Pick-Up Station	0	0
TOTAL	1	2

Evaluation of Trailhead Design and Ambiance

	Overall Ambiance & Design (1-3)
Trailhead/Trail Access Point	1

Neighborhood & Community Score

Criteria	Neighborhood Score (1-3)	Community Score (1-3)
Location & Trail Access	1	1
Trail Connections	2	2
AVERAGE	1.5	

Comments:

- Minimal-amenity trail access point
- Lack of signage and distinguishing amenities make trail access difficult to locate
- On-street parking is difficult along Barranca Rd due to road geometry

Recommended Classification (*Trailhead or Trail Access Point*):

Trail Access Point



Trail access sign from Barranca Rd



Trail entry and scenic overlook

Name:

27. Deer Trap Trailhead

At east end of Barranca Rd

Total Score: 2.2

Evaluation of Comfort and Convenience Features

Component	Count	Condition, Comfort & Convenience (0-3)
Trailhead Signage	0	0
Parking	1	2
Directional Signage	1	2
Shade	1	2
Informational Kiosk	0	0
Trash Receptacles	0	0
Restrooms	0	0
Lights	0	0
Seating	0	0
Water Fountain	0	0
Dog Pick-Up Station	0	0
TOTAL	3	6

Evaluation of Trailhead Design and Ambiance

	Overall Ambiance & Design (1-3)
Trailhead/Trail Access Point	1

Neighborhood & Community Score

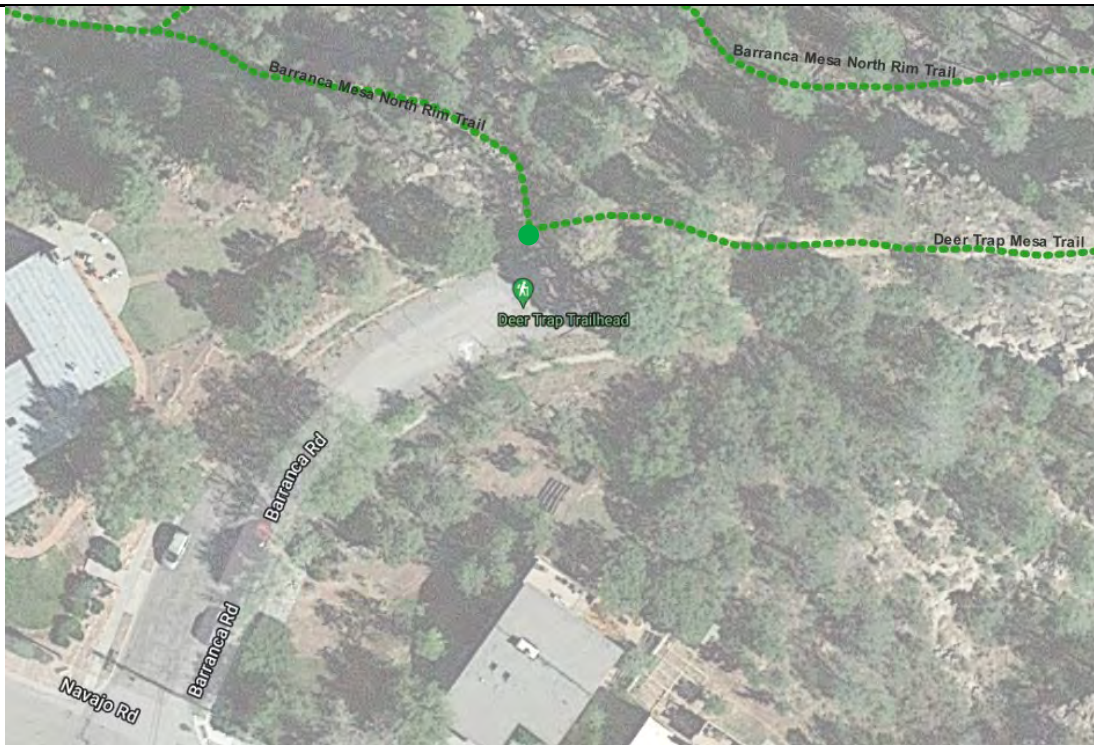
Criteria	Neighborhood Score (1-3)	Community Score (1-3)
Location & Trail Access	1	1
Trail Connections	3	3
AVERAGE	2	

Comments:

- Undefined parking area along Barranca Rd
- Lack of standard signage
- Primary connection to trails northeast of town, scenic views throughout, and existing parking area make trailhead a high-priority candidate for trailhead amenity improvements including parking and seating

Recommended Classification (*Trailhead* or *Trail Access Point*):

Trailhead



Barranca Rd walkup and undefined parking area



Directional signage at trail access point



Interpretive signs – 'Los Alamos Homestead Tour'



Scenic views in all directions

Name:

28. Bayo Canyon Trail Access Point

At North Mesa Stables

Total Score: 1.7

Evaluation of Comfort and Convenience Features

Component	Count	Condition, Comfort & Convenience (0-3)
Trailhead Signage	1	2
Parking	0	0
Directional Signage	1	2
Shade	0	0
Informational Kiosk	0	0
Trash Receptacles	0	0
Restrooms	0	0
Lights	0	0
Seating	0	0
Water Fountain	0	0
Dog Pick-Up Station	0	0
TOTAL	2	4

Evaluation of Trailhead Design and Ambiance

	Overall Ambiance & Design (1-3)
Trailhead/Trail Access Point	1

Neighborhood & Community Score

Criteria	Neighborhood Score (1-3)	Community Score (1-3)
Location & Trail Access	1	1
Trail Connections	2	2
AVERAGE	1.5	

Comments:

- Minimal-amenity trail access point
- Potential parking area near trail access, but could be prohibited by other uses
- Lack of signage and distinguishing amenities make trail access difficult to locate

Recommended Classification (*Trailhead or Trail Access Point*):

Trail Access Point



Trailhead sign on N Mesa Rd



Trail access between stables and manure pile



No defined parking near trail access



Adorable goats at stable adjacent trail access

Name:

29. Kwage Mesa Trailhead

At North Mesa Park

Total Score: 2.2

Evaluation of Comfort and Convenience Features

Component	Count	Condition, Comfort & Convenience (0-3)
Trailhead Signage	0	0
Parking	1	2
Directional Signage	1	2
Shade	0	0
Informational Kiosk	1	1
Trash Receptacles	0	0
Restrooms	0	1
Lights	0	0
Seating	0	0
Water Fountain	0	0
Dog Pick-Up Station	0	0
TOTAL	3	6

Evaluation of Trailhead Design and Ambiance

	Overall Ambiance & Design (1-3)
Trailhead/Trail Access Point	1

Neighborhood & Community Score

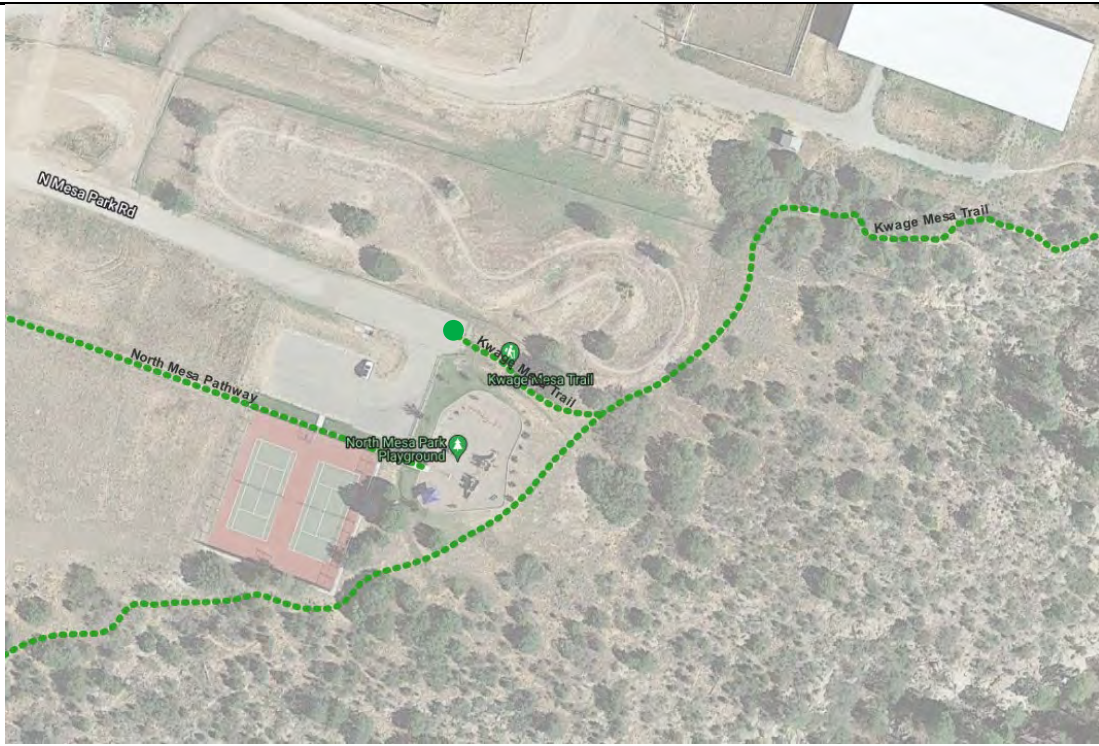
Criteria	Neighborhood Score (1-3)	Community Score (1-3)
Location & Trail Access	2	2
Trail Connections	2	2
AVERAGE	2	

Comments:

- Shared amenities with park and playground – including parking – make this a group-friendly trailhead
- Need for directional signage for both trails and restroom location (at Brewer Arena)
- As one of few trailheads for trails east of town, may be higher-priority candidate for trailhead improvements (including shade and seating)

Recommended Classification (*Trailhead or Trail Access Point*):

Trailhead



N Mesa Park Rd and parking area



Empty kiosk and directional sign at trailhead



Restroom and interpretive sign at trail start



Restrooms further down trail at Brewer Arena

Name:

30. North Pueblo Bench Trail Access Point

At Walnut Street Playlot

Total Score: 1.1

Evaluation of Comfort and Convenience Features

Component	Count	Condition, Comfort & Convenience (0-3)
Trailhead Signage	0	0
Parking	0	0
Directional Signage	1	2
Shade	0	0
Informational Kiosk	0	0
Trash Receptacles	0	0
Restrooms	0	0
Lights	0	0
Seating	0	0
Water Fountain	0	0
Dog Pick-Up Station	0	0
TOTAL	1	2

Evaluation of Trailhead Design and Ambiance

	Overall Ambiance & Design (1-3)
Trailhead/Trail Access Point	1

Neighborhood & Community Score

Criteria	Neighborhood Score (1-3)	Community Score (1-3)
Location & Trail Access	1	1
Trail Connections	1	1
AVERAGE	1	

Comments:

- Shared amenities with park and playground – including parking – increase potential user groups for this trail access point
- Directional signage is not located at trail access from park, but further into the trail. This makes it very difficult to determine trail location and access

Recommended Classification (*Trailhead or Trail Access Point*):

Trail Access Point



Parking at end of street, viewed from park



Trail access at end of park, signage not found

Name:

31. Homestead Crossing Trail Access Point

At 33rd St

Total Score: 1.7

Evaluation of Comfort and Convenience Features

Component	Count	Condition, Comfort & Convenience (0-3)
Trailhead Signage	1	2
Parking	0	0
Directional Signage	0	0
Shade	0	0
Informational Kiosk	0	0
Trash Receptacles	0	0
Restrooms	0	0
Lights	0	0
Seating	0	0
Water Fountain	0	0
Dog Pick-Up Station	0	0
TOTAL	1	2

Evaluation of Trailhead Design and Ambiance

	Overall Ambiance & Design (1-3)
Trailhead/Trail Access Point	1

Neighborhood & Community Score

Criteria	Neighborhood Score (1-3)	Community Score (1-3)
Location & Trail Access	2	1
Trail Connections	2	1
AVERAGE	1.5	

Comments:

- Minimal-amenity trail access point
- On-street parking on 33rd St is tight due to road geometry
- Lack of standard directional signage

Recommended Classification (*Trailhead or Trail Access Point*):

Trail Access Point



Trail sign seen from on-street parking on 33rd St



Primitive trail and crossing, no directional signage

Name:

32. School Canyon Trail Access Point

At 37th Street Playlot

Total Score: 3.3

Evaluation of Comfort and Convenience Features

Component	Count	Condition, Comfort & Convenience (0-3)
Trailhead Signage	1	2
Parking	0	0
Directional Signage	0	0
Shade	1	2
Informational Kiosk	0	0
Trash Receptacles	1	2
Restrooms	0	0
Lights	0	0
Seating	0	0
Water Fountain	0	0
Dog Pick-Up Station	1	2
TOTAL	4	8

Evaluation of Trailhead Design and Ambiance

	Overall Ambiance & Design (1-3)
Trailhead/Trail Access Point	2

Neighborhood & Community Score

Criteria	Neighborhood Score (1-3)	Community Score (1-3)
Location & Trail Access	2	1
Trail Connections	2	1
AVERAGE	1.5	

Comments:

- Convenient trail access for 37th St Playlot users and community from nearby neighborhood
- Lack of standard trail/directional signage

Recommended Classification (*Trailhead* or *Trail Access Point*):

Trail Access Point



On-street parking on 37th St



Concrete sidewalk from 37th St to Playlot



Trail access (primitive trail) from Playlot

Name:

33. Homestead Crossing Trail Access Point

At Ridgeway Playlot

Total Score: 2.2

Evaluation of Comfort and Convenience Features

Component	Count	Condition, Comfort & Convenience (0-3)
Trailhead Signage	1	2
Parking	1	2
Directional Signage	1	2
Shade	0	0
Informational Kiosk	0	0
Trash Receptacles	0	0
Restrooms	0	0
Lights	0	0
Seating	0	0
Water Fountain	0	0
Dog Pick-Up Station	0	0
TOTAL	3	6

Evaluation of Trailhead Design and Ambiance

	Overall Ambiance & Design (1-3)
Trailhead/Trail Access Point	1

Neighborhood & Community Score

Criteria	Neighborhood Score (1-3)	Community Score (1-3)
Location & Trail Access	2	2
Trail Connections	2	2
AVERAGE	2	

Comments:

- Shared amenities with park and playground – including parking – make this a group-friendly trailhead
- Lack of standard trail/directional signage
- As one of few trailheads for trails east of town, may be higher-priority candidate for trailhead improvements (including shade and seating)

Recommended Classification (*Trailhead or Trail Access Point*):

Trailhead



Access road from Ridgeway Dr



Parking area at playlot



Directional signage past playlot, not easy to find

Name:

34. Olive Street Trailhead

Total Score: 1.1

At Orange St & Olive St

Evaluation of Comfort and Convenience Features

Component	Count	Condition, Comfort & Convenience (0-3)
Trailhead Signage	1	1
Parking	1	2
Directional Signage	0	0
Shade	0	0
Informational Kiosk	0	0
Trash Receptacles	0	0
Restrooms	0	0
Lights	0	0
Seating	0	0
Water Fountain	0	0
Dog Pick-Up Station	0	0
TOTAL	2	3

Evaluation of Trailhead Design and Ambiance

	Overall Ambiance & Design (1-3)
Trailhead/Trail Access Point	1

Neighborhood & Community Score

Criteria	Neighborhood Score (1-3)	Community Score (1-3)
Location & Trail Access	1	1
Trail Connections	1	1
AVERAGE	1	

Comments:

- Trailhead signage present on Orange St, but lack of standard trail/directional signage
- Could not locate the trail access
- No trailhead amenities
- There is ample space to develop a trailhead staging area

Recommended Classification (*Trailhead or Trail Access Point*):

Trailhead



Trailhead signage on Orange St



Trailhead not found, gates locked on Olive St

Name:

35. South Pueblo Bench Trail Access Point

At Orange Street Playlot

Total Score: 1.1

Evaluation of Comfort and Convenience Features

Component	Count	Condition, Comfort & Convenience (0-3)
Trailhead Signage	0	0
Parking	0	0
Directional Signage	0	0
Shade	0	0
Informational Kiosk	0	0
Trash Receptacles	0	0
Restrooms	0	0
Lights	0	0
Seating	0	0
Water Fountain	0	0
Dog Pick-Up Station	0	0
TOTAL	0	0

Evaluation of Trailhead Design and Ambiance

	Overall Ambiance & Design (1-3)
Trailhead/Trail Access Point	1

Neighborhood & Community Score

Criteria	Neighborhood Score (1-3)	Community Score (1-3)
Location & Trail Access	1	1
Trail Connections	1	1
AVERAGE	1	

Comments:

- Trailhead not found

Recommended Classification (*Trailhead or Trail Access Point*):

N/A, see above



Unstriped parking area at end of Orange St



Narrow walkway to Orange St Playlot



Closed gate where access trail may have existed

Name:

36. Camp May Trailhead

At Camp May Campground

Total Score: 5.4

Evaluation of Comfort and Convenience Features

Component	Count	Condition, Comfort & Convenience (0-3)
Trailhead Signage	0	0
Parking	1	2
Directional Signage	1	2
Shade	1	2
Informational Kiosk	0	0
Trash Receptacles	1	2
Restrooms	1	3
Lights	0	0
Seating	1	2
Water Fountain	0	0
Dog Pick-Up Station	0	0
TOTAL	6	13

Evaluation of Trailhead Design and Ambiance

	Overall Ambiance & Design (1-3)
Trailhead/Trail Access Point	2

Neighborhood & Community Score

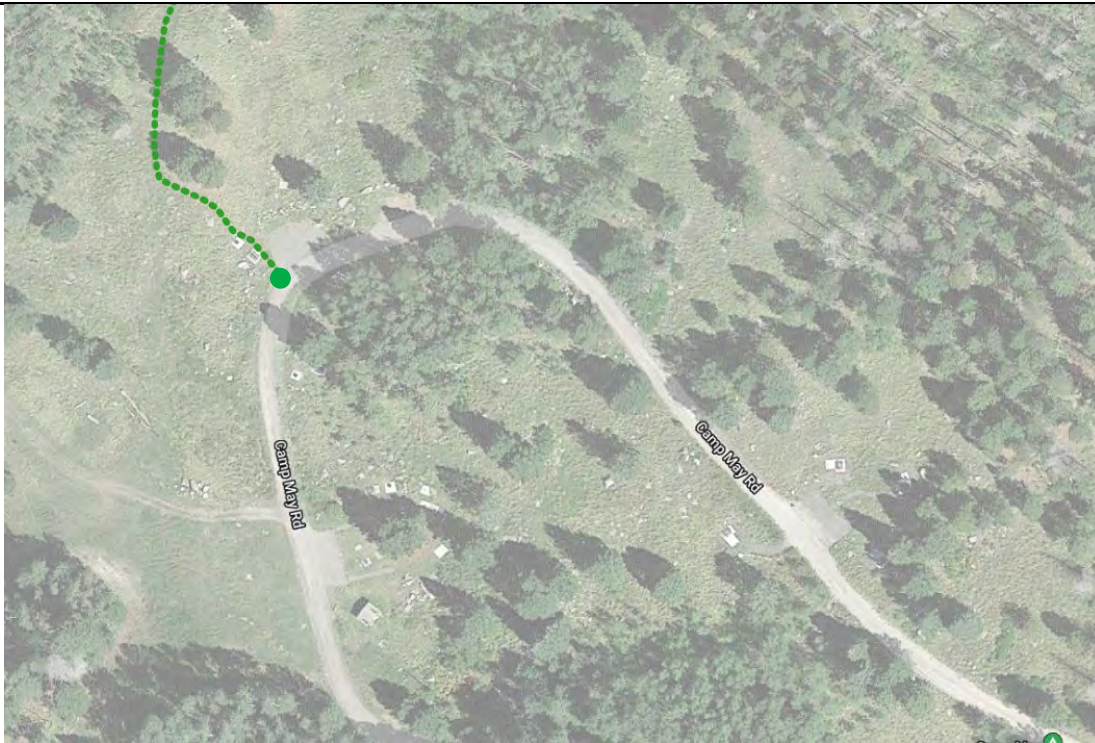
Criteria	Neighborhood Score (1-3)	Community Score (1-3)
Location & Trail Access	1	3
Trail Connections	2	3
AVERAGE	2.25	

Comments:

- Unable to access trailhead during site visit; road closed past ski area
- Observations from Google Earth and Street View. Shared amenities with Camp May group campground site, including: small parking area, restrooms, trash, directional signage, shade canopy from established trees

Recommended Classification (*Trailhead or Trail Access Point*):

Trailhead



Camp May Rd closed at ski area, ¼ mile from trail



Trailhead as seen from Google Street View as access road was closed at time of site visit. Amenities present – restrooms, seating, trash, directional signage

Name:

37. South Perimeter Trailhead

On West Jemez Rd

Total Score: 1.7

Evaluation of Comfort and Convenience Features

Component	Count	Condition, Comfort & Convenience (0-3)
Trailhead Signage	0	0
Parking	1	2
Directional Signage	1	2
Shade	0	0
Informational Kiosk	0	0
Trash Receptacles	0	0
Restrooms	0	0
Lights	0	0
Seating	0	0
Water Fountain	0	0
Dog Pick-Up Station	0	0
TOTAL	2	4

Evaluation of Trailhead Design and Ambiance

	Overall Ambiance & Design (1-3)
Trailhead/Trail Access Point	1

Neighborhood & Community Score

Criteria	Neighborhood Score (1-3)	Community Score (1-3)
Location & Trail Access	1	2
Trail Connections	1	2
AVERAGE	1.5	

Comments:

- Ample parking with surrounding mature pine trees makes for a scenic trail access
- Limited street signage, trail signage and any trail access distinguishing features make this access difficult to locate
- Unique opportunity to highlight the 'climbing area' assessed from this trail access

Recommended Classification (*Trailhead* or *Trail Access Point*):

Trail Access Point



Pullout and parking from W Jemez Rd



Bare dirt, spacious parking area



Directional sign, trails in two directions



Directional sign with 'climbing area' included

Name:

38. Cañon del Valle Trail Access Point

On West Jemez Rd

Total Score: 1.7

Evaluation of Comfort and Convenience Features

Component	Count	Condition, Comfort & Convenience (0-3)
Trailhead Signage	0	0
Parking	1	2
Directional Signage	0	0
Shade	0	0
Informational Kiosk	0	0
Trash Receptacles	0	0
Restrooms	0	0
Lights	0	0
Seating	0	0
Water Fountain	0	0
Dog Pick-Up Station	0	0
TOTAL	1	2

Evaluation of Trailhead Design and Ambiance

	Overall Ambiance & Design (1-3)
Trailhead/Trail Access Point	1

Neighborhood & Community Score

Criteria	Neighborhood Score (1-3)	Community Score (1-3)
Location & Trail Access	1	2
Trail Connections	1	2
AVERAGE	1.5	

Comments:

- Boulder-marked parking and turnaround area; surrounding mature pine trees make for a scenic trail access
- Limited street signage, trail signage and any trail access distinguishing features make this access difficult to locate
- Closed gate and lack of defined entry or signage make it unclear if non-motorized access is allowed

Recommended Classification (*Trailhead or Trail Access Point*):

Trail Access Point



Turnaround and parking with boulder edging



Closed gate; trail difficult to locate



Non-Motorized Recreation sign; trail beyond



Looking back at parking from closed gate

Name:

39. Perimeter Trail Access Point

On West Jemez Rd

Total Score: 1.1

Evaluation of Comfort and Convenience Features

Component	Count	Condition, Comfort & Convenience (0-3)
Trailhead Signage	0	0
Parking	0	0
Directional Signage	0	0
Shade	0	0
Informational Kiosk	0	0
Trash Receptacles	0	0
Restrooms	0	0
Lights	0	0
Seating	0	0
Water Fountain	0	0
Dog Pick-Up Station	0	0
TOTAL	0	0

Evaluation of Trailhead Design and Ambiance

	Overall Ambiance & Design (1-3)
Trailhead/Trail Access Point	1

Neighborhood & Community Score

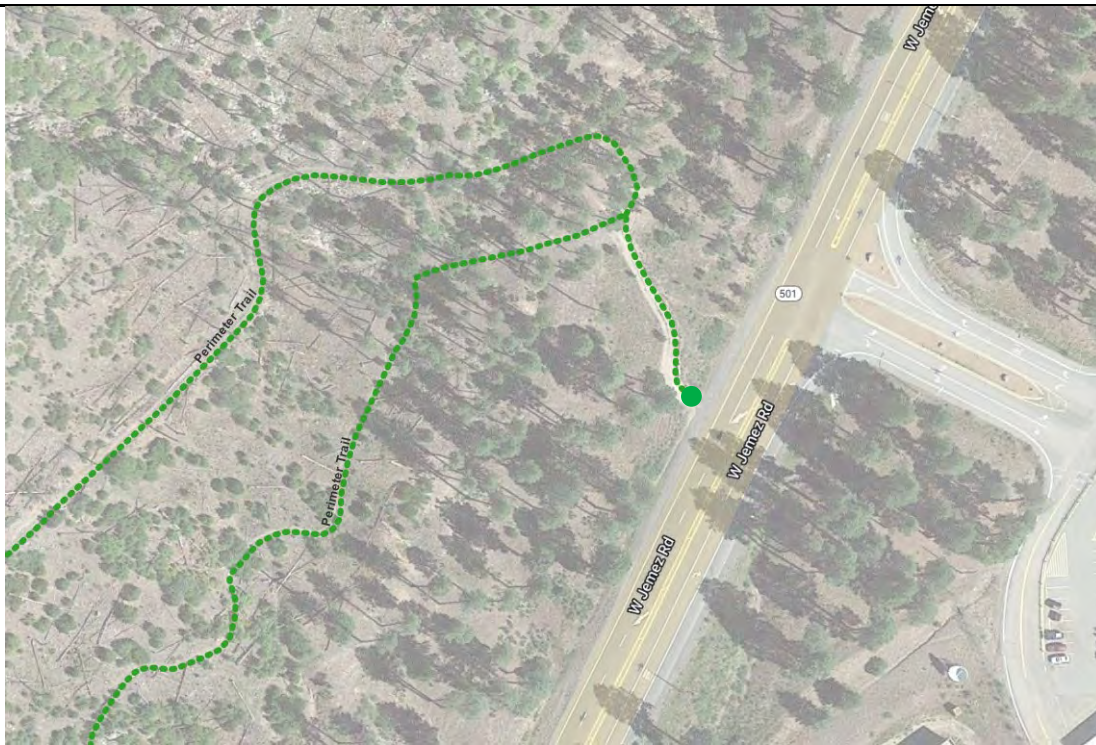
Criteria	Neighborhood Score (1-3)	Community Score (1-3)
Location & Trail Access	1	1
Trail Connections	1	1
AVERAGE	1	

Comments:

- Limited street signage, trail signage and any trail access distinguishing features make this access difficult to locate
- Potential for parking area but need for improved access road uphill from Jemez Rd

Recommended Classification (*Trailhead or Trail Access Point*):

Trail Access Point



Possible parking uphill from street; rough road



Access road/trail; lack of trail signage



Weathered sign; possibly old directional signage



Sign marking *National Forest Property Boundary*

Name:

40. Ponderosa Trailhead

At Ponderosa Campground (Bandelier National Monument)

Total Score: 9.0

Evaluation of Comfort and Convenience Features

Component	Count	Condition, Comfort & Convenience (0-3)
Trailhead Signage	1	3
Parking	1	3
Directional Signage	2	3
Shade	1	3
Informational Kiosk	1	3
Trash Receptacles	1	3
Restrooms	1	2
Lights	0	0
Seating	0	0
Water Fountain	1	2
Dog Pick-Up Station	0	0
TOTAL	9	22

Evaluation of Trailhead Design and Ambiance

	Overall Ambiance & Design (1-3)
Trailhead/Trail Access Point	3

Neighborhood & Community Score

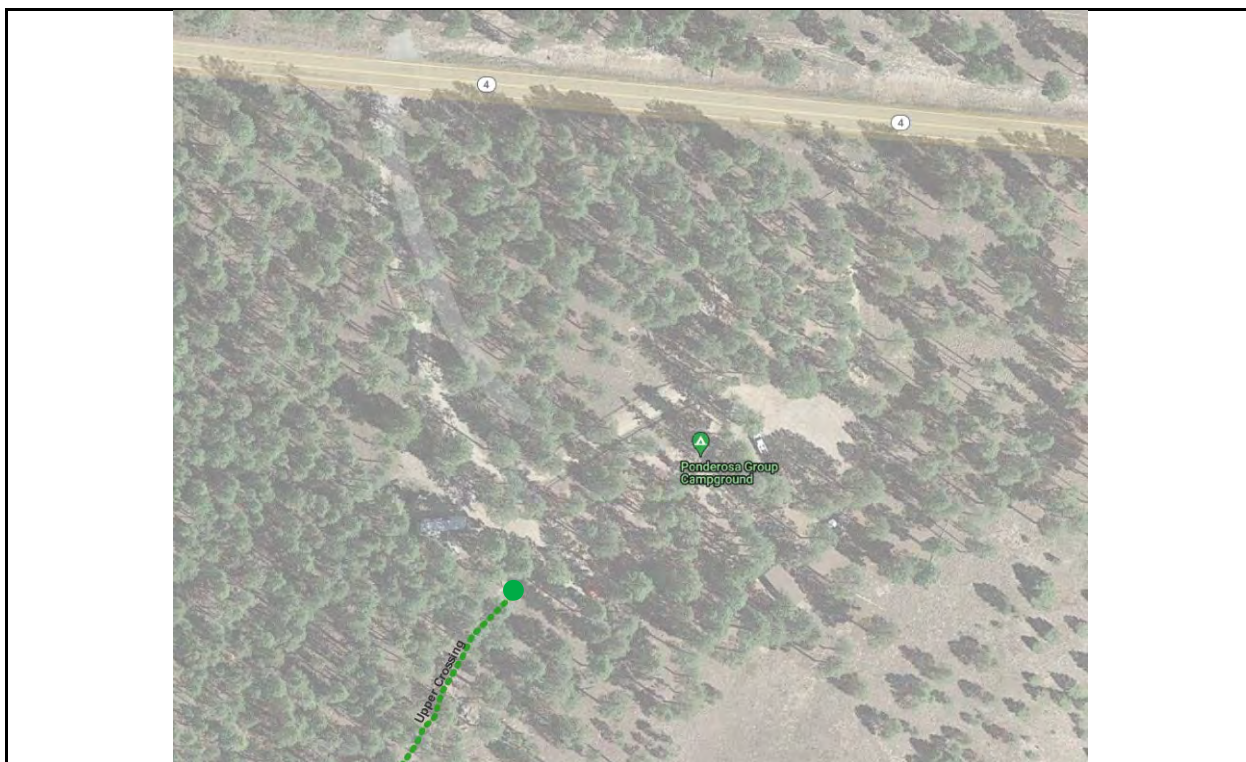
Criteria	Neighborhood Score (1-3)	Community Score (1-3)
Location & Trail Access	2	3
Trail Connections	2	3
AVERAGE	2.5	

Comments:

- Well-establish trailhead with shared amenities of National Monument group campground area – including restrooms, parking, access to water
- Dense pine tree canopy provides shade and scenic forest environment
- Dogs not allowed as this is a National Monument trail

Recommended Classification (*Trailhead or Trail Access Point*):

Trailhead



Parking area, turnaround and restrooms



Trail signage in parking area



Trailhead with kiosk and directional signage



Kiosk with trail map and interpretive info

Name:

41. Burnt Mesa Trailhead

In Bandelier National Monument

Total Score: 5.5

Evaluation of Comfort and Convenience Features

Component	Count	Condition, Comfort & Convenience (0-3)
Trailhead Signage	0	0
Parking	1	2
Directional Signage	1	2
Shade	1	2
Informational Kiosk	1	3
Trash Receptacles	0	0
Restrooms	0	0
Lights	0	0
Seating	0	0
Water Fountain	0	0
Dog Pick-Up Station	0	0
TOTAL	4	9

Evaluation of Trailhead Design and Ambiance

	Overall Ambiance & Design (1-3)
Trailhead/Trail Access Point	2

Neighborhood & Community Score

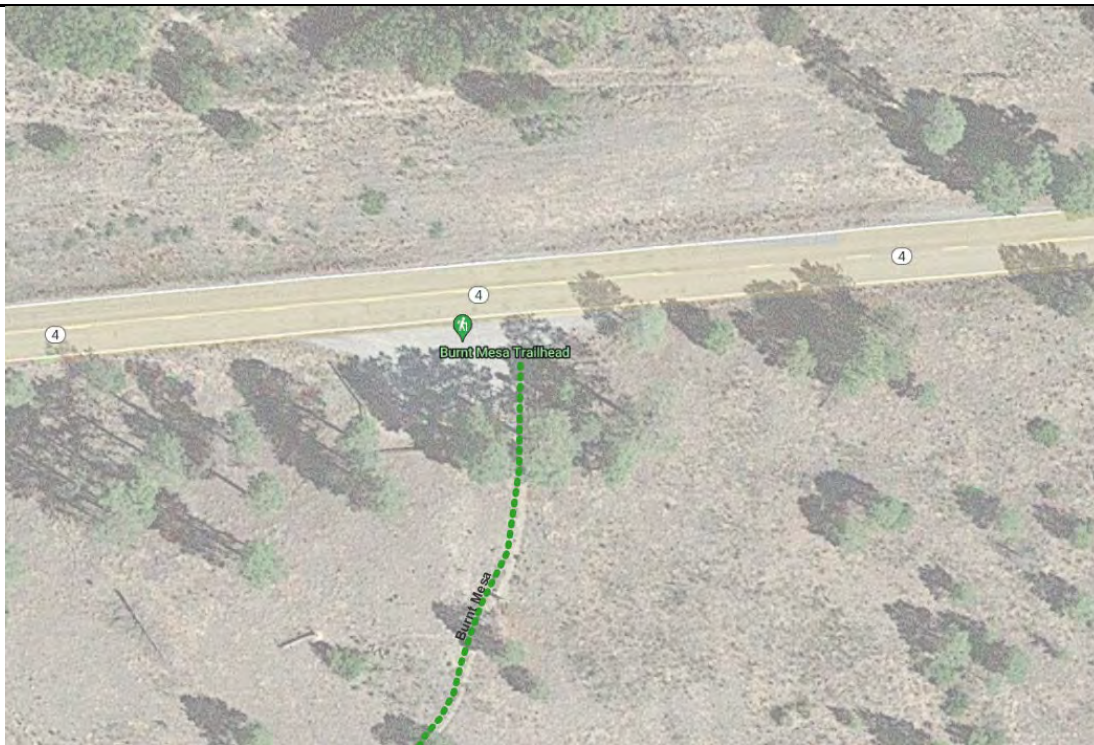
Criteria	Neighborhood Score (1-3)	Community Score (1-3)
Location & Trail Access	2	3
Trail Connections	2	3
AVERAGE	2.5	

Comments:

- Well-defined gravel parking area, clearly marked trail access point
- Lack of trail signage approaching the parking area on State Road 4
- Dense pine tree canopy provides shade and scenic forest environment at parking area
- Dogs not allowed as this is a National Monument trail

Recommended Classification (*Trailhead or Trail Access Point*):

Trailhead



Gravel parking area off State Road 4 (~6-8 cars)



Trailhead with kiosk and directional signage



Kiosk with trail map and interpretive info

Name:

42. Old Road Trails Access Point

On State Road 4, Gate 2

Total Score: 1.7

Evaluation of Comfort and Convenience Features

Component	Count	Condition, Comfort & Convenience (0-3)
Trailhead Signage	0	0
Parking	1	1
Directional Signage	1	2
Shade	0	0
Informational Kiosk	1	3
Trash Receptacles	0	0
Restrooms	0	0
Lights	0	0
Seating	0	0
Water Fountain	0	0
Dog Pick-Up Station	0	0
TOTAL	3	6

Evaluation of Trailhead Design and Ambiance

	Overall Ambiance & Design (1-3)
Trailhead/Trail Access Point	1

Neighborhood & Community Score

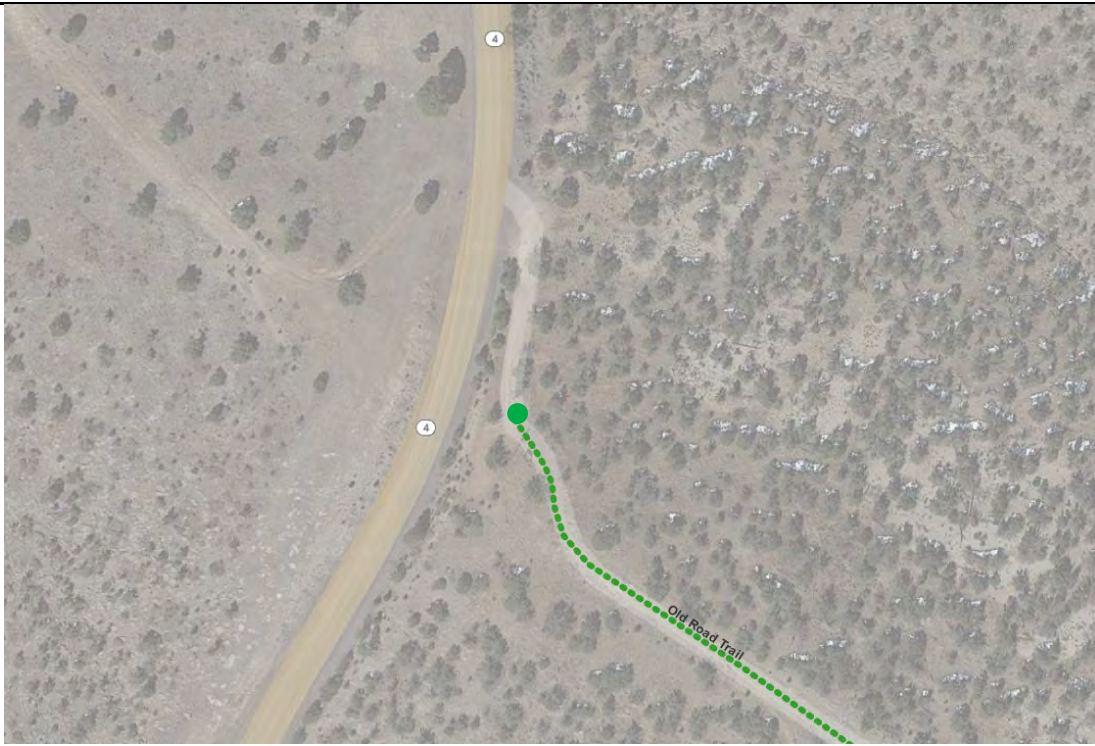
Criteria	Neighborhood Score (1-3)	Community Score (1-3)
Location & Trail Access	1	2
Trail Connections	1	2
AVERAGE	1.5	

Comments:

- Limited street and trail signage and ill-defined parking make this trail access point difficult to locate
- Directional signage at parking area would help orient users to access road

Recommended Classification (*Trailhead or Trail Access Point*):

Trail Access Point



Pullout parking along State Rd 4; ~ 3-4 cars



~200 ft access road from parking area



Trail access point with access gate and kiosk



Kiosk with updated trail map and trail info

Name:

43. Knife Edge Trail Access Point

On State Road 4, Gate 3

Total Score: 1.7

Evaluation of Comfort and Convenience Features

Component	Count	Condition, Comfort & Convenience (0-3)
Trailhead Signage	0	0
Parking	1	1
Directional Signage	1	2
Shade	0	0
Informational Kiosk	1	3
Trash Receptacles	0	0
Restrooms	0	0
Lights	0	0
Seating	0	0
Water Fountain	0	0
Dog Pick-Up Station	0	0
TOTAL	3	6

Evaluation of Trailhead Design and Ambiance

	Overall Ambiance & Design (1-3)
Trailhead/Trail Access Point	1

Neighborhood & Community Score

Criteria	Neighborhood Score (1-3)	Community Score (1-3)
Location & Trail Access	1	2
Trail Connections	1	2
AVERAGE	1.5	

Comments:

- Minimal access point with updated gate and newer trail map sign
- Limited street and trail signage, ill-defined parking make this trail access point difficult to locate

Recommended Classification (*Trailhead* or *Trail Access Point*):

Trail Access Point



Access gate and kiosk at Gate 3



Trail access beyond, kiosk



Kiosk with updated trail map and trail info

Name:

44. Powerline Point Trail Access Point

On State Road 4, Gate 4

Total Score: 1.7

Evaluation of Comfort and Convenience Features

Component	Count	Condition, Comfort & Convenience (0-3)
Trailhead Signage	0	0
Parking	1	1
Directional Signage	1	2
Shade	0	0
Informational Kiosk	1	3
Trash Receptacles	0	0
Restrooms	0	0
Lights	0	0
Seating	0	0
Water Fountain	0	0
Dog Pick-Up Station	0	0
TOTAL	3	6

Evaluation of Trailhead Design and Ambiance

	Overall Ambiance & Design (1-3)
Trailhead/Trail Access Point	1

Neighborhood & Community Score

Criteria	Neighborhood Score (1-3)	Community Score (1-3)
Location & Trail Access	1	2
Trail Connections	1	2
AVERAGE	1.5	

Comments:

- Minimal access point with updated gate and newer trail map sign
- Limited street and trail signage, ill-defined parking make this trail access point difficult to locate
- would help orient users to access road

Recommended Classification (*Trailhead or Trail Access Point*):

Trail Access Point



Pullout parking along State Road 4; ~ 3-4 cars



Access gate and kiosk at end of access road



Kiosk with updated trail map and trail info

Name:

45. Ridgeline-Potrillo Mesa Trail Access Point

On State Road 4, Gate 8A

Total Score: 1.7

Evaluation of Comfort and Convenience Features

Component	Count	Condition, Comfort & Convenience (0-3)
Trailhead Signage	0	0
Parking	1	1
Directional Signage	1	2
Shade	1	2
Informational Kiosk	1	3
Trash Receptacles	0	0
Restrooms	0	0
Lights	0	0
Seating	0	0
Water Fountain	0	0
Dog Pick-Up Station	0	0
TOTAL	4	8

Evaluation of Trailhead Design and Ambiance

	Overall Ambiance & Design (1-3)
Trailhead/Trail Access Point	1

Neighborhood & Community Score

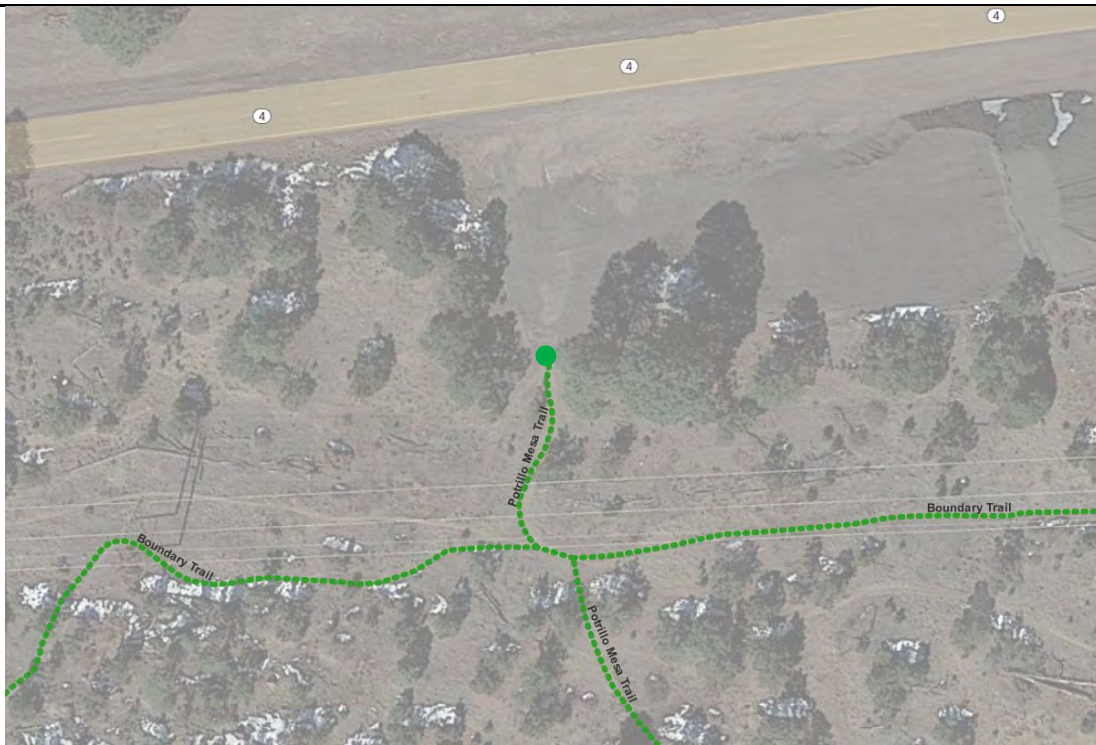
Criteria	Neighborhood Score (1-3)	Community Score (1-3)
Location & Trail Access	1	2
Trail Connections	1	2
AVERAGE	1.5	

Comments:

- Minimal access point with updated gate and newer trail map sign
- Limited street and trail signage, ill-defined parking make this trail access point difficult to locate
- Directional signage at parking area would help orient users to access road
- Available space for parking and the existing trail connections makes this trail access a candidate for trailhead improvements

Recommended Classification (*Trailhead or Trail Access Point*):

Trail Access Point



Gravel parking area next to large gravel pile



Access gate and kiosk



Kiosk with updated trail map and trail info

Name:

46. Water Canyon Overlook Trail Access Point

On State Road 4, Gate 10

Total Score: 1.7

Evaluation of Comfort and Convenience Features

Component	Count	Condition, Comfort & Convenience (0-3)
Trailhead Signage	0	0
Parking	0	0
Directional Signage	1	2
Shade	0	0
Informational Kiosk	1	3
Trash Receptacles	0	0
Restrooms	0	0
Lights	0	0
Seating	0	0
Water Fountain	0	0
Dog Pick-Up Station	0	0
TOTAL	2	5

Evaluation of Trailhead Design and Ambiance

	Overall Ambiance & Design (1-3)
Trailhead/Trail Access Point	1

Neighborhood & Community Score

Criteria	Neighborhood Score (1-3)	Community Score (1-3)
Location & Trail Access	1	2
Trail Connections	1	2
AVERAGE	1.5	

Comments:

- Minimal access point with updated gate and newer trail map sign
- Limited street and trail signage, ill-defined parking make this trail access point difficult to locate
- Directional signage at parking area would help orient users to access road
- Steep drop-off between road and trail access makes parking difficult; terrain is primitive and presents accessibility issues

Recommended Classification (*Trailhead or Trail Access Point*):

Trail Access Point



Steep embankment btwn St Rd 4 and access gate



Access gate and kiosk, steep rugged walkup trail



Trail access with *US Government Property* signs



Kiosk with updated trail map and trail info

Name:

47. Potrillo Canyon Loop Access Point

On State Road 4, Gate 11

Total Score: 3.3

Evaluation of Comfort and Convenience Features

Component	Count	Condition, Comfort & Convenience (0-3)
Trailhead Signage	0	0
Parking	1	2
Directional Signage	1	2
Shade	0	0
Informational Kiosk	1	3
Trash Receptacles	0	0
Restrooms	0	0
Lights	0	0
Seating	0	0
Water Fountain	0	0
Dog Pick-Up Station	0	0
TOTAL		7

Evaluation of Trailhead Design and Ambiance

	Overall Ambiance & Design (1-3)
Trailhead/Trail Access Point	2

Neighborhood & Community Score

Criteria	Neighborhood Score (1-3)	Community Score (1-3)
Location & Trail Access	1	2
Trail Connections	1	2
AVERAGE	1.5	

Comments:

- Minimal access point with updated gate and newer trail map sign
- Limited street and trail signage make this trail access point difficult to locate
- Large parking area provides safe pullout from State Road 4; opportunity for trailhead improvements

Recommended Classification (*Trailhead or Trail Access Point*):

Trail Access Point



Spacious gravel parking pullout off State Rd 4



Access gate and kiosk



Kiosk with updated trail map and trail info

Name:

48. White Rock Canyon Rim Trail Access Point

On Sherwood Blvd

Total Score: 3.3

Evaluation of Comfort and Convenience Features

Component	Count	Condition, Comfort & Convenience (0-3)
Trailhead Signage	0	0
Parking	1	2
Directional Signage	1	2
Shade	0	0
Informational Kiosk	0	0
Trash Receptacles	0	0
Restrooms	0	0
Lights	0	0
Seating	0	0
Water Fountain	0	0
Dog Pick-Up Station	1	2
TOTAL	3	6

Evaluation of Trailhead Design and Ambiance

	Overall Ambiance & Design (1-3)
Trailhead/Trail Access Point	2

Neighborhood & Community Score

Criteria	Neighborhood Score (1-3)	Community Score (1-3)
Location & Trail Access	1	2
Trail Connections	1	2
AVERAGE	1.5	

Comments:

- Roadside trail access point with dog waste and minimal signage
- Street-side signage could make trail access easier to locate along Sherwood

Recommended Classification (*Trailhead or Trail Access Point*):

Trail Access Point



On-street parking along Sherwood Blvd



Dog waste, directional sign, trail sign beyond



Directional sign with small trail map



Small directional sign, close-up

Name:

49. Red Dot Trailhead

On Piedra Loop

Total Score: 8.3

Evaluation of Comfort and Convenience Features

Component	Count	Condition, Comfort & Convenience (0-3)
Trailhead Signage	0	0
Parking	1	2
Directional Signage	1	2
Shade	0	0
Informational Kiosk	1	3
Trash Receptacles	0	0
Restrooms	0	0
Lights	0	0
Seating	0	0
Water Fountain	0	0
Dog Pick-Up Station	0	0
TOTAL	3	7

Evaluation of Trailhead Design and Ambiance

	Overall Ambiance & Design (1-3)
Trailhead/Trail Access Point	3

Neighborhood & Community Score

Criteria	Neighborhood Score (0-3)	Community Score (0-3)
Location & Trail Access	2	3
Trail Connections	2	3
AVERAGE	2.5	

Comments:

- Trailhead with scenic views, an updated kiosk and pull-out area for on-street parking
- Scenic location, existing improvements, and available on-street parking make this a high-priority candidate for trailhead improvements, including accessibility improvements (existing stairs), signage, pet station, seating

Recommended Classification (*Trailhead* or *Trail Access Point*):

Trailhead



Broad shoulder for on-street parking



Newer kiosk; scenic views beyond



Existing stairs from street to trailhead



Kiosk with updated trail map

Name:

50. Pinon Park Trail Access Point

At Sherwood Blvd and State Road 4

Total Score: 1.1

Evaluation of Comfort and Convenience Features

Component	Count	Condition, Comfort & Convenience (0-3)
Trailhead Signage	0	0
Parking	1	2
Directional Signage	0	0
Shade	0	0
Informational Kiosk	0	0
Trash Receptacles	0	0
Restrooms	0	0
Lights	0	0
Seating	0	0
Water Fountain	0	0
Dog Pick-Up Station	0	0
TOTAL	1	2

Evaluation of Trailhead Design and Ambiance

	Overall Ambiance & Design (1-3)
Trailhead/Trail Access Point	1

Neighborhood & Community Score

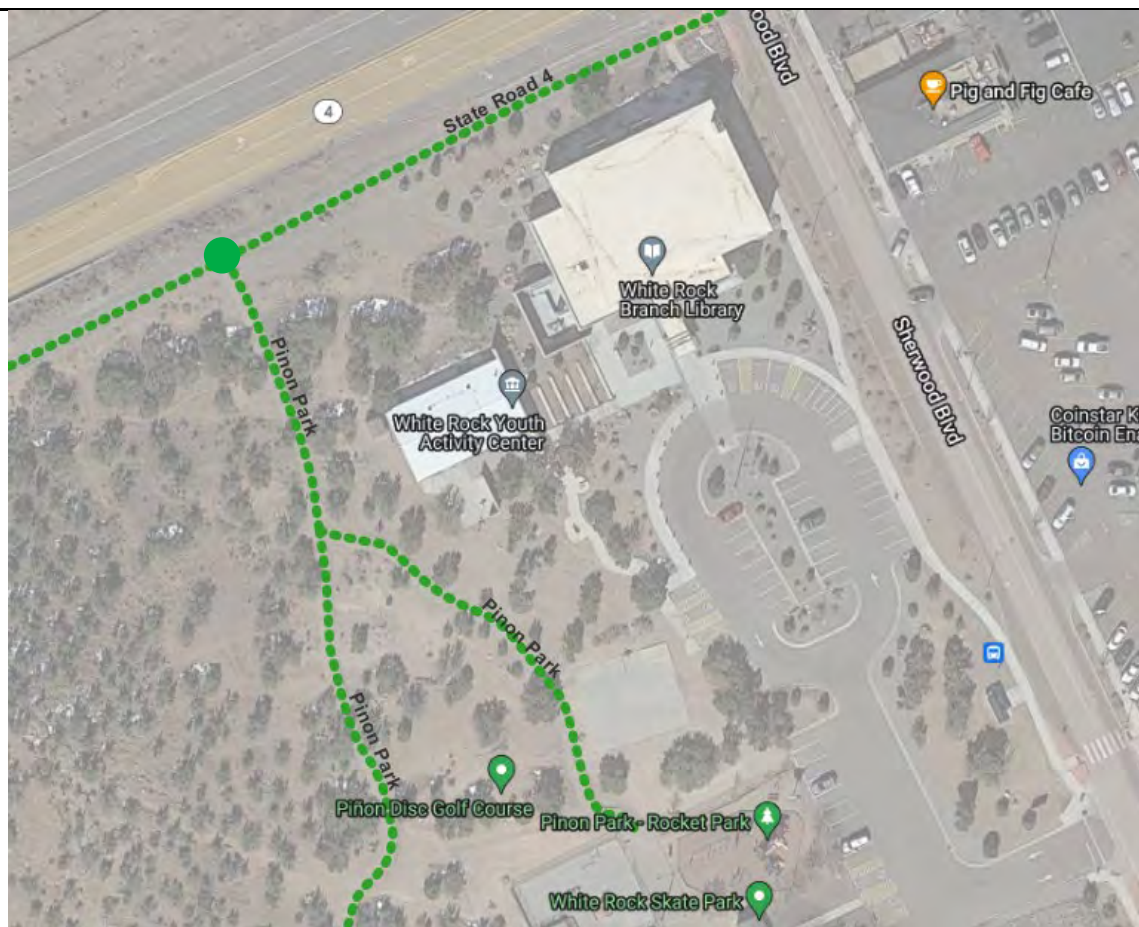
Criteria	Neighborhood Score (1-3)	Community Score (1-3)
Location & Trail Access	1	1
Trail Connections	1	1
AVERAGE	1	

Comments:

- Trail connection between the paved multi-use path along State Road 4 with interior trails near public library
- Currently, there are no signs or identifiers to signal that a trail access exists; unclear where the connections go
- Shared parking at the public library and easy access to Pinon Park make this a candidate for trail access point improvements

Recommended Classification (*Trailhead or Trail Access Point*):

Trail Access Point



Trail access point along State Road 4 paved trail



Lack of signage makes trail hard to locate

Name:

51. Cañada del Buey Trailhead #1

On State Road 4

Total Score: 4.4

Evaluation of Comfort and Convenience Features

Component	Count	Condition, Comfort & Convenience (0-3)
Trailhead Signage	1	2
Parking	1	2
Directional Signage	0	0
Shade	1	3
Informational Kiosk	0	0
Trash Receptacles	1	2
Restrooms	0	0
Lights	0	0
Seating	1	2
Water Fountain	0	0
Dog Pick-Up Station	0	0
TOTAL	5	11

Evaluation of Trailhead Design and Ambiance

	Overall Ambiance & Design (1-3)
Trailhead/Trail Access Point	2

Neighborhood & Community Score

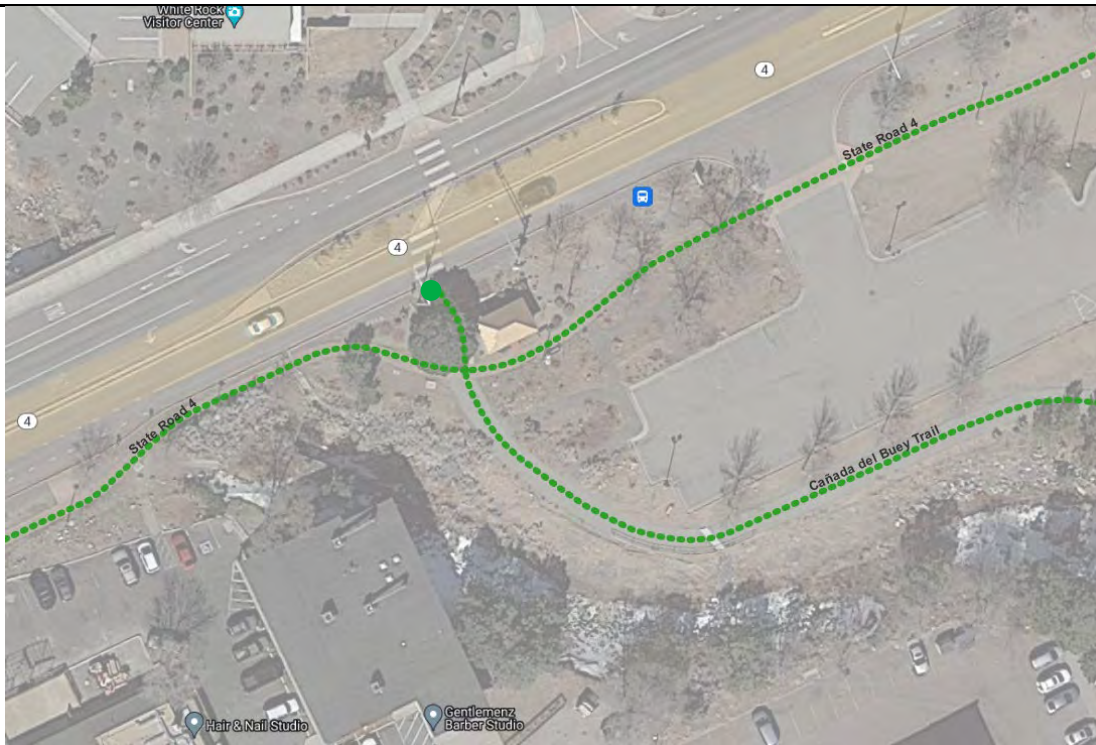
Criteria	Neighborhood Score (1-3)	Community Score (1-3)
Location & Trail Access	2	2
Trail Connections	2	2
AVERAGE	2	

Comments:

- Trailhead along State Road 4 with shaded seating, signage, and a large shade structure
- Ample parking in what is potentially a commercial lot with open connection to trailhead area
- Lack of directional signage, map make it unclear where the trail connection leads

Recommended Classification (*Trailhead or Trail Access Point*):

Trailhead



N Mesa Park Rd and parking area



Empty kiosk and directional sign at trailhead



Restroom and interpretive sign at trail start

Name:

52. State Road 4 Trail Access Point

At the White Rock on Rover Blvd and State Road 4

Total Score: 1.1

Evaluation of Comfort and Convenience Features

Component	Count	Condition, Comfort & Convenience (0-3)
Trailhead Signage	0	0
Parking	0	0
Directional Signage	0	0
Shade	0	0
Informational Kiosk	0	0
Trash Receptacles	0	0
Restrooms	0	0
Lights	0	0
Seating	0	0
Water Fountain	0	0
Dog Pick-Up Station	0	0
TOTAL	0	0

Evaluation of Trailhead Design and Ambiance

	Overall Ambiance & Design (1-3)
Trailhead/Trail Access Point	1

Neighborhood & Community Score

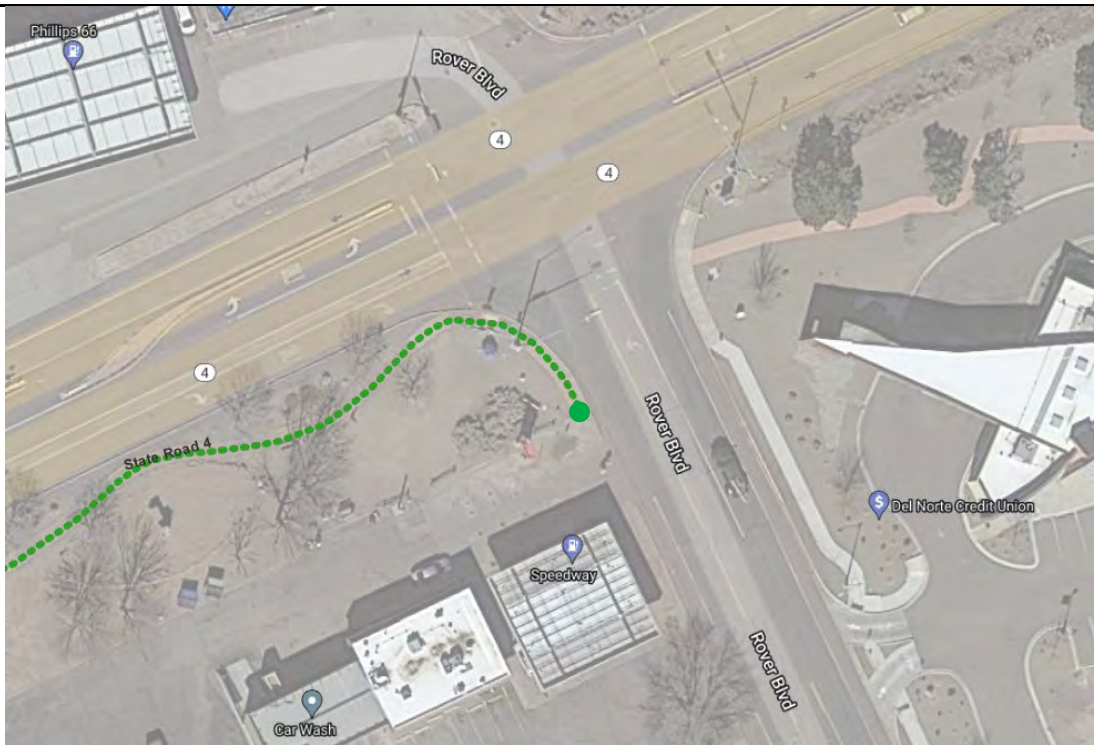
Criteria	Neighborhood Score (1-3)	Community Score (1-3)
Location & Trail Access	1	1
Trail Connections	1	1
AVERAGE	1	

Comments:

- Other than iconic 'white rock', no signage or other markers exist to identify this area as a trail access point
- Opportunity for improvements – including signs and trail map – since this is a high-traffic intersection that connects to the paved multiuse path along State Road 4

Recommended Classification (*Trailhead or Trail Access Point*):

Trail Access Point



Colored concrete sidewalk and 'White Rock' at the intersection of Rover Blvd and State Rd 4



Trail connection continues across Rover Blvd

Name:

53. Mountain Meadows-Chamisa Trail Access Point

Total Score: 1.1

At Mountain Meadow Park

Evaluation of Comfort and Convenience Features

Component	Count	Condition, Comfort & Convenience (0-3)
Trailhead Signage	0	0
Parking	0	0
Directional Signage	0	0
Shade	0	0
Informational Kiosk	0	0
Trash Receptacles	0	0
Restrooms	0	0
Lights	0	0
Seating	0	0
Water Fountain	0	0
Dog Pick-Up Station	0	0
TOTAL	0	0

Evaluation of Trailhead Design and Ambiance

	Overall Ambiance & Design (1-3)
Trailhead/Trail Access Point	1

Neighborhood & Community Score

Criteria	Neighborhood Score (1-3)	Community Score (1-3)
Location & Trail Access	1	1
Trail Connections	1	1
AVERAGE	1	

Comments:

- Connector sidewalk between street and playground that continues past playground to Mountain Meadows-Chamisa trail
- No signage or improvements to identify site as trail access point

Recommended Classification (*Trailhead or Trail Access Point*):

Trail Access Point



Trail connection from street sidewalk



Trail connection, playground beyond

Name:

54. Cañada del Buey Trail Access Point #2

On Meadow Lane

Total Score: 2.2

Evaluation of Comfort and Convenience Features

Component	Count	Condition, Comfort & Convenience (0-3)
Trailhead Signage	1	2
Parking	0	0
Directional Signage	1	2
Shade	1	2
Informational Kiosk	0	0
Trash Receptacles	0	0
Restrooms	0	0
Lights	0	0
Seating	0	0
Water Fountain	0	0
Dog Pick-Up Station	1	2
TOTAL	4	8

Evaluation of Trailhead Design and Ambiance

	Overall Ambiance & Design (1-3)
Trailhead/Trail Access Point	1

Neighborhood & Community Score

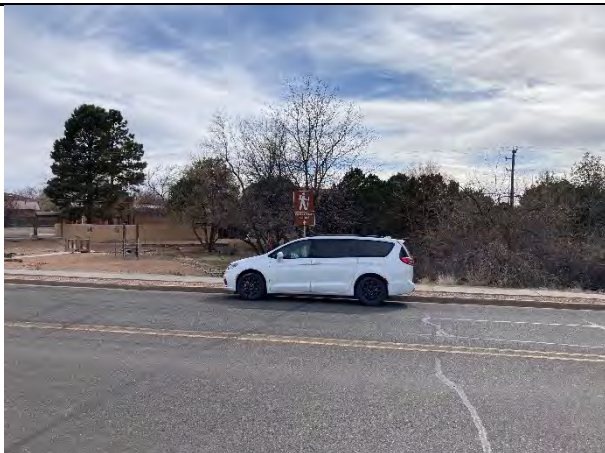
Criteria	Neighborhood Score (1-3)	Community Score (1-3)
Location & Trail Access	2	2
Trail Connections	2	2
AVERAGE	2	

Comments:

- Small trail access point with signage, pet waste and improved trail start
- A scenic trail access with convenient connection from residential area to State Road 4 commercial corridor
- Potential for shared parking use at adjacent White Rock United Methodist Church

Recommended Classification (*Trailhead or Trail Access Point*):

Trail Access Point



On-street parking along Meadow Ln



Trailhead, directional signage along Meadow Ln



Improved gravel trail, pet station

Name:

55. Blue Dot Trailhead

At Overlook Park

Total Score: 5.5

Evaluation of Comfort and Convenience Features

Component	Count	Condition, Comfort & Convenience (0-3)
Trailhead Signage	2	1
Parking	1	2
Directional Signage	1	1
Shade	0	0
Informational Kiosk	1	1
Trash Receptacles	0	0
Restrooms	0	0
Lights	0	0
Seating	0	0
Water Fountain	0	0
Dog Pick-Up Station	0	0
TOTAL	0	5

Evaluation of Trailhead Design and Ambiance

	Overall Ambiance & Design (1-3)
Trailhead/Trail Access Point	2

Neighborhood & Community Score

Criteria	Neighborhood Score (1-3)	Community Score (1-3)
Location & Trail Access	2	3
Trail Connections	2	3
AVERAGE	2.5	

Comments:

- Shared amenities with park – including parking – make this a group-friendly trailhead
- Scenic views from trailhead and nearby trail connections
- With multiple trail connections, existing park amenities, a high-priority candidate for trailhead amenity improvements, including signage, seating, waste, pet station

Recommended Classification (*Trailhead or Trail Access Point*):

Trailhead



Trailhead signage at park entry



Small directional signage near parking



Parking area, empty kiosk, trailhead, scenic views



Small directional signage just past trailhead

Appendix H – Descriptions of Proposed Additions to Network



PART 1

TRAIL MANAGEMENT PLAN: TRAIL ASSESSMENTS AND NEEDS

PROPOSED ADDITIONS TO LOS ALAMOS COUNTY TRAIL NETWORK

Overview

Although the Los Alamos Trail Network is extensive and well-maintained, several additions to the system would address needs of trail users or simply make sections of the system more inviting to users.

Opinion surveys of trail users consistently point out that by far users prefer loop trips to out-and-back adventures. The disjointed nature of the finger mesas on the Pajarito Plateau has left many trails connected to the network in only a single location. The Los Alamos Trail Network has several gaps that when filled would create an extensive collection of possible loop trips. In other locations, existing roads provide a route to trail users where a more sustainable trail would better serve all types of trail enthusiasts. And in some locations, future acquisition of land by the County through purchase or transfer would provide the opportunity for expansion of the trail network.

Proposed additions to the Los Alamos Trail Network:

1. Quemazon Stacked Loops
2. Pueblo Canyon Trail Extension
3. Perimeter Connectors
4. Walnut Canyon to Walnut Rim
5. Otowi-Deer Trap-Kwage Mesa Connectors
6. Rendija Addition
7. Canyon Rim Trail Extension

Quemazon Stacked Loops

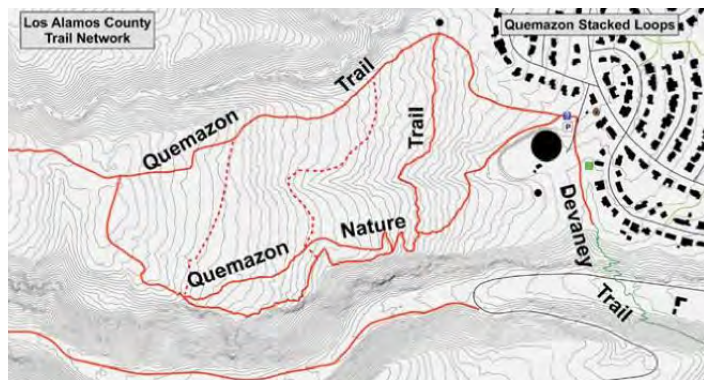
The Quemazon Trail area is immediately adjacent to the Western Area and is a popular spot for both neighborhood residents and other trail users. To increase the recreational opportunities for users, a small network of stacked loops should be created. Stacked loops provide users with options for the length of their trip, the difficulty of their trip, and provide variety for the many daily users that utilize trails in their neighborhoods.

Two connecting trails are proposed to loop with the Quemazon Nature Trail and the Quemazon Trail. The first connector would be located just above the first cliff band on the trail. The second is adjacent to the Santa Fe National Forest boundary.

In conjunction with the existing trails in the area, the two proposed connectors would give trail users the choice between loops of one-half mile, one mile, 1.5 miles, and 2 miles. Improvements to the canyon edge route roughed-in by Mountain Elementary in 2006 would provide another option with very different views along the trail.

Segments of the proposed trails could be incorporated into the Quemazon Nature Trail as additional stops for environmental education.

Trail length: 2500 feet



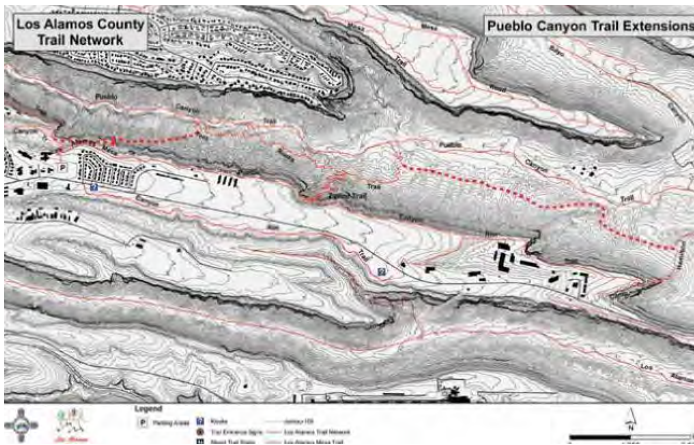
Two additional connector trails on the Quemazon Nature Trail system would provide for a variety of trip lengths and offer opportunities for establishing "contemplative trails" in the area.

Pueblo Canyon Trail Extensions

Pueblo Canyon offers an opportunity for longer, more adventurous trips within the Townsite. Currently the spine of the trail network in the canyon is the access road in the canyon bottom, usually called the Pueblo Canyon Trail. Recently, the Tent Rocks Trail has offered a more scenic and more recreational experience in the canyon. Still, until 2011 the only two access/egress points in the canyon were located 4 miles apart. Making a loop trip required a long time commitment. The addition of the Zipline Trail offered a cut-off for a 5-mile loop.

An additional rim-to-bottom route near Graduation Canyon would establish opportunities for several loop trips of varying lengths, as well as providing another trailhead for users of the Pueblo Canyon network. Proposed is a trail traversing from the pour-off in Graduation Canyon below East Park to the Tent Rocks Trail near its western end. This trail would allow easy access to the canyon bottom from East Park. It would create a challenging 3-mile loop with the Zipline Trail, a 5-mile trip with the Camp Hamilton Trail, and a 4-mile loop with the Ranch School Trail.

The popularity of the Tent Rocks Trail could be increased by extending it to the east. This proposal would connect that trail with the Camp Hamilton Trail. The trail would traverse land currently owned by the Department of Energy but that is slated for transfer



to the County in the near future. The trail would leave the Tent Rocks Trail about halfway up its eastern ascent and contour to the east through ponderosa pine stands. It would meet the Camp Hamilton Trail, which would be part of a loop closed by the Pueblo Canyon Rim Trail.

Trail length: Zipline Two, 4000 feet

Tent Rocks Extension, 7000 feet

Perimeter Connectors

The Perimeter Trail would benefit from adding two short connecting trails, one north to Solana in Quemazon Communities, the other meeting with the Quemazon Trail to the south. The Solana connection would not only provide for additional loop trips, but would help solve a long-standing problem of illegal use of old trails that now are located on private land. This short connection would leave the Solana cul-de-sac and contour to join the Perimeter as it heads across a rocky slope south of Quemazon Communities.

A vital missing link in the trail network is an easy connection between the Perimeter and Quemazon trails. Such a link would cross the south fork of Pueblo Canyon which is currently part of the Santa Fe National Forest. This narrow strip of land is a possible sale parcel and could be acquired by the County in the future. Acquisition would permit crossing the canyon with a trail connection. Because the canyon walls are steep, the link would be best served by a bridge with two short feeder trails on either side of the canyon.

Trail length: Solana to Perimeter: 900 feet

Quemazon Trail to Perimeter: from 700 to 1500 feet



Walnut Canyon to Walnut Rim

The most direct route for trail users traveling between the north rim of Walnut Canyon and the canyon bottom is the hot and dusty Walnut Canyon Utility Road. The road is steep and has a surface of loose pumice dust and rock. This segment of the trail network could be enhanced by construction of a single-track trail between the canyon bottom and the rim.

Trail length: 600 feet



Otowi-Deer Trap-Kwage Mesa Connectors

As the trail network developed over the years, the easy trails were located in the canyon bottoms or along the flat mesa tops. This has led to a series of disjointed linear trail corridors with few loop possibilities. This proposal would link Deer Trap Mesa on the north with Kwage Mesa on the south, traversing Barrancas and Bayo canyons to create several new loop opportunities for trail users.

A connection between the Deer Trap Mesa South Arm Trail and the Otowi Mesa Trail would angle along the foot of Otowi Mesa. The descent from Otowi Mesa to the north is readily accomplished on the rocky slope. The trail would then skirt below Los Pueblos and bear west to head up Barrancas Canyon. A natural break in the cliff is located about a half-mile up canyon. The trail would ascend the slopes and connect with the trails on Deer Trap Mesa.

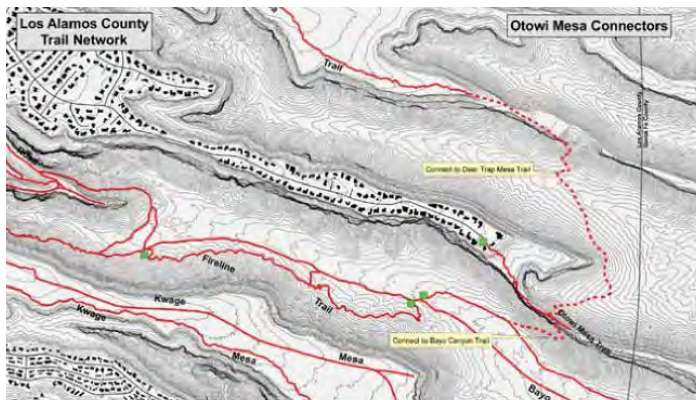
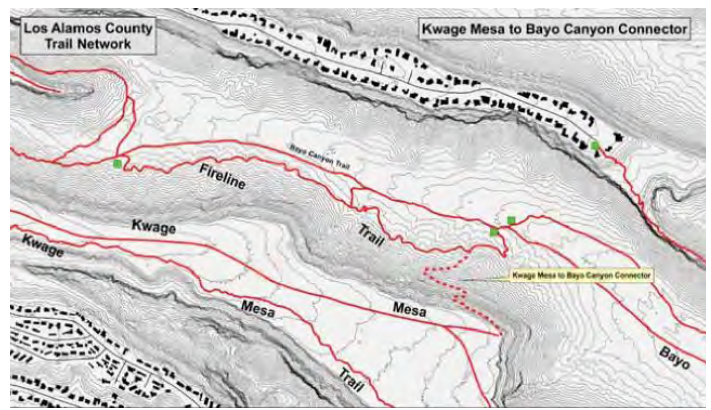
In the low saddle on Otowi Mesa below the east end of Los Pueblos, an old route leads down the cliff into Bayo Canyon. This route does not meet current safety standards, but it could be used as a gateway to develop a more modern and safe connection between the mesa top and the canyon bottom.

To complete this mesa and canyon trail system, a switchback trail down the north face of Kwage Mesa could be constructed to meet the Fireline Trail. The terrain in this area is more gentle than on other mesas and trail construction would be relatively easy.

Trail length: Deer Trap to Otowi: 6000 feet

Otowi Mesa to Bayo Canyon: 300 feet

Kwage Mesa to Bayo Canyon: 2000 feet



Canyon Rim Trail Extension

The Los Alamos County Canyon Rim Trail project will provide a scenic, safe, and easily accessible trail corridor along the south edge of Los Alamos Mesa. The hard-surface, universally accessible trail will serve the community by providing recreational opportunities for all citizens, particularly families; providing an alternative transportation route between the downtown area and the growing facilities, both County and private, immediately south of the Los Alamos Airport; and providing a scenic attraction that will draw visitors to Los Alamos.

The Canyon Rim Trail is a hard-surface pathway suitable for concurrent use by walkers, bicycles, baby strollers, runners, and wheelchairs. The pathway is 10 feet wide and the grade will remain below 5 percent. Parking and information will be provided at both ends of the pathway. Rest stops with benches will be developed at scenic observation points along the route. The initial phase of the Canyon Rim Trail between the eastern County line and East Park is complete.

The Canyon Rim Trail should be extended into the downtown area. For details, see the Canyon Rim Trail Master Plan.

Trail length: Canyon Rim Trail to 15th Street, 8000 feet

