

Los Alamos Memorial Rose Garden Created by Los Alamos Garden Club in 1958

LAGC Proposal: A Deer Fence to Protect the Historic Los Alamos Memorial Rose Garden



Kersti Rock, LAGC member and New Mexico Garden Clubs District II Director, September 12, 2024

Los Alamos Memorial Rose Garden

Is a Treasured Part of Los Alamos Historic District

- The Garden began in 1956 and was established in its current location in 1958.
- It is the second stop, after Fuller Lodge, on the Los Alamos Walking Tour.
- Weddings and other events are held in the Garden.
- Local residents frequent the Garden to enjoy its peace and beauty.
- Recent fires have increased the number of deer in town and the deer are destroying the Garden.
- Los Alamos Garden Club members have worked hard, every year since the Garden's inception, to maintain it and keep it beautiful.
- Garden Club members must now create cages around rose plants to protect them from deer.
- A fence is needed to protect the Garden and the right fence will enhance its Beauty.

Rose Garden - Early Days

The beginning

- 1956 - Zia Parks Department gave the Los Alamos Garden Club a garden plot in the Community Center where the present roundabout is.
- The club turned the plot into a rose garden, planting 6 Floribunda China Roses.
- 1957 - Plant sale enabled the club to purchase 50 more roses - Los Alamos Rose Garden begins.
- Preparation and planting of the beds done under supervision of Carl A. Freeman, superintendent of the Zia Parks Department.
- 1958 - More space was needed so the Atomic Energy Commission allowed the club to appropriate an area of land behind Fuller Lodge to use as a memorial garden.
- Club member and landscape architect, Lila Gardner designed the present garden in 1957.

Rose Garden - Early Days

Memorial structures as well as memorial roses

- 1959 - The Redwood Arbor, or garden house, was added on the west side and marked the entrance to the Rose Garden. Another, smaller, arbor was added to the north and in 1987 was dedicated as the Lanter Memorial Arbor in honor of Norma and Robert Lanter, two club members.
- 1959 and early 1960's - Zia Parks Department handled watering and mulching. Club members took care of pruning and grooming the plants.
- 1961 - Two Sears grants and donations from club members enabled the club to place several decorative structures in the garden.
 - A stand, dedicated to the memory of Enrico Fermi, was placed under the Garden House and used to hold a chart listing all the rose bushes. The stand now supports a plaque with a history of the Rose Garden.
 - Mrs. Ernest Lang, a club member, donated the Nambe Mills birdbath in memory of her husband, Ernest Lang, Sr.
 - Sundial, also executed by Nambe Mills, was donated by Mary Strickfadden in memory of her husband, William Strickfadden. The base for the sundial was donated by the Lion's club.
- 1968 - There were 450 rose bushes under the care of the Garden Club. That year, Los Alamos County assumed some of the maintenance of the Rose Garden.
- 1973 - A club committee advised installation of concrete barriers and black border chains by Los Alamos County.
- 1999 - The metal "Table Fountain with Rock" by Hans Van de Bovenkamp, was purchased by the Garden Club with matching funds from the Art in Public Places Board. The fountain was installed in the Rose Garden as a gift to Los Alamos County on its 50th Anniversary.

Rose Garden - More Recently

Los Alamos County and the Garden Club have worked together on the Rose Garden since the late 1960's

- 2002 - Los Alamos County built cement Historical Walkway that borders two sides of the Rose Garden. A chain link fence and the black border decorative chain were removed at this time. Path lighting was installed along the walkway.
- 2004 - Los Alamos County installed a \$5,000 irrigation system and reinstalled the “Table Fountain with Rock” which had been removed for repairs.
- 2007 - Veteran’s Blue Star ByWay marker was installed by Phillip Kigour, husband of club member Midge Kigour.
- 2022 - Club members currently put in about 300 hours of work each growing season. The County takes care of watering, provides mulch, maintains the grass and structural features like the arbors.
- The Memorial Rose Garden is not just a memorial but also a place of beauty and inspiration for residents and visitors alike. Wedding receptions, concerts, craft fairs and other community events take place in and around the garden. It is a vital and growing feature of Los Alamos and a source of pride for the community. (From a history by Irene Aikin)

Los Alamos Memorial Rose Garden is an important feature of the Historic District

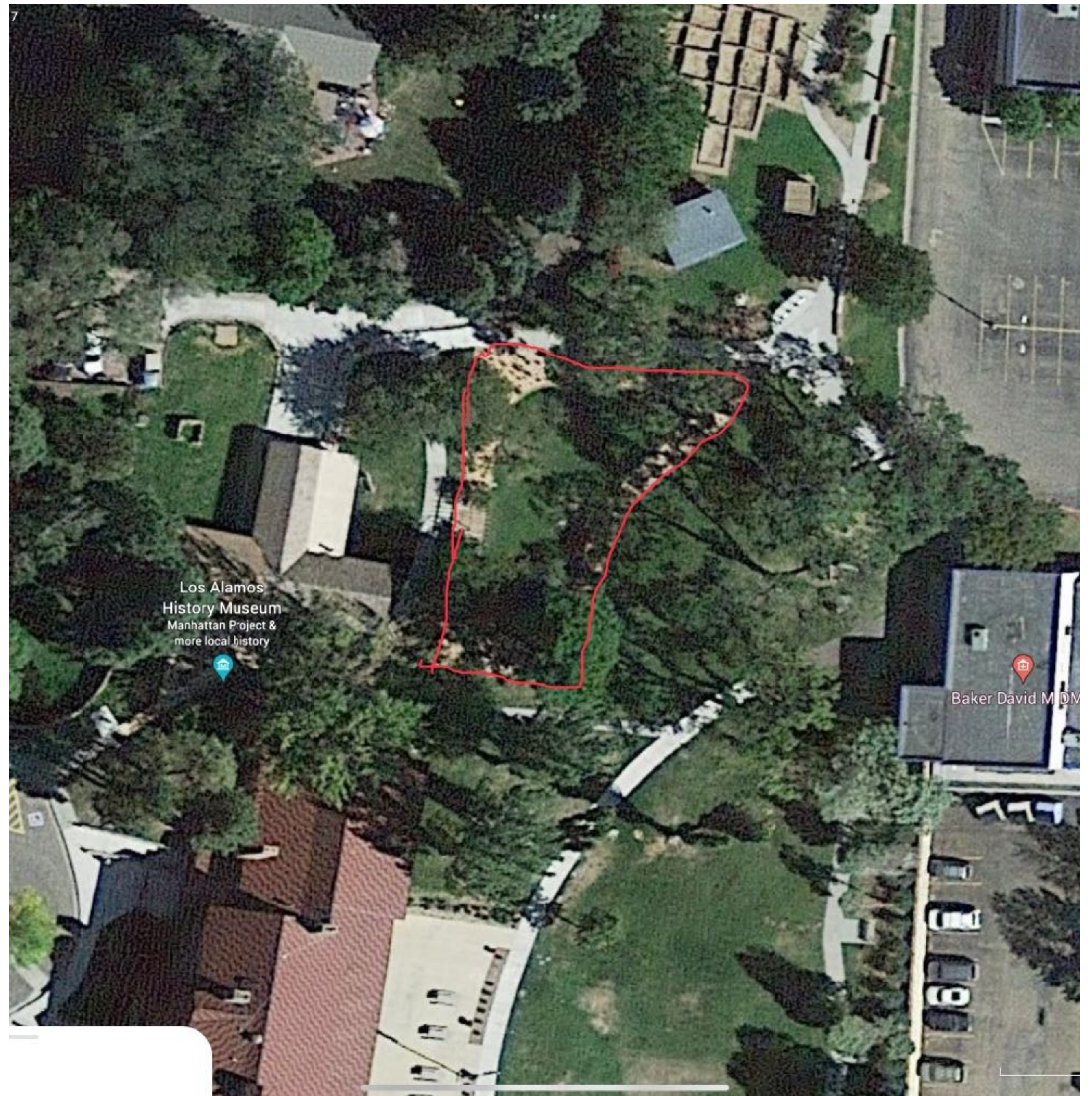


Weddings and other events occur in the Rose Garden
The garden is centrally located in the Historic District



Location and Perimeter of the Rose Garden

- The garden is located near Fuller Lodge, History Museum and the Romero Cabin
- LAGC members working in the garden frequently interact with visitors to the Historic District to answer questions or provide directions.
- The perimeter of the garden is approximately 400' and includes 3 entrances positioned on the north, west and south sides of the garden.



Los Alamos Garden Club works from April to November in the Garden

About half a dozen or so members work each Monday for 2-3 hours

Weeding, Pruning, Fertilizing begins in the Spring. Weeding, deadheading, some pruning and building wire cages to cover the plants continues all season.



Planting new Roses



Mulching - Putting the Garden to Bed for Winter



**Deer have become even more numerous and frequent visitors to the Garden
Due to fire and drought driving them to forage more in town**



Los Alamos Garden Club member shooing away deer



Winter damage: Deer trample the cages and defecate all over the Garden and Lawn



Measures taken to prevent predation of roses by the local deer population

- Garden club members have planted rosemary and marigolds as their scents are supposed to be objectionable to the deer.
- The marigolds also provide pleasant color to the garden.
- Marigolds are annuals and planting so many is very labor intensive.
- The deer do not seem deterred.



Measures taken to prevent predation of roses by the local deer population

Bags of Irish Spring Soap

- Bags of Irish Spring Soap have been hung since the scent is supposed to repel deer.
- This measure has not been effective, at least not without placing so many bags that they would become unsightly.



**Cages now cover the roses to prevent deer from destroying the plants
Other deer deterrents have been tried and found unsuccessful**



Measures taken to prevent predation of roses by the local deer population

- Wire cages have now been placed over most of the rose plants.
- This has allowed more blooms to develop on these plants.
- But the plants then outgrow their cages and the cages have to be replaced with larger ones.
- This is labor intensive.
- The cages are somewhat unsightly.



A fence to prevent the increasing predation by local deer would allow the Rose Garden to recover and grow

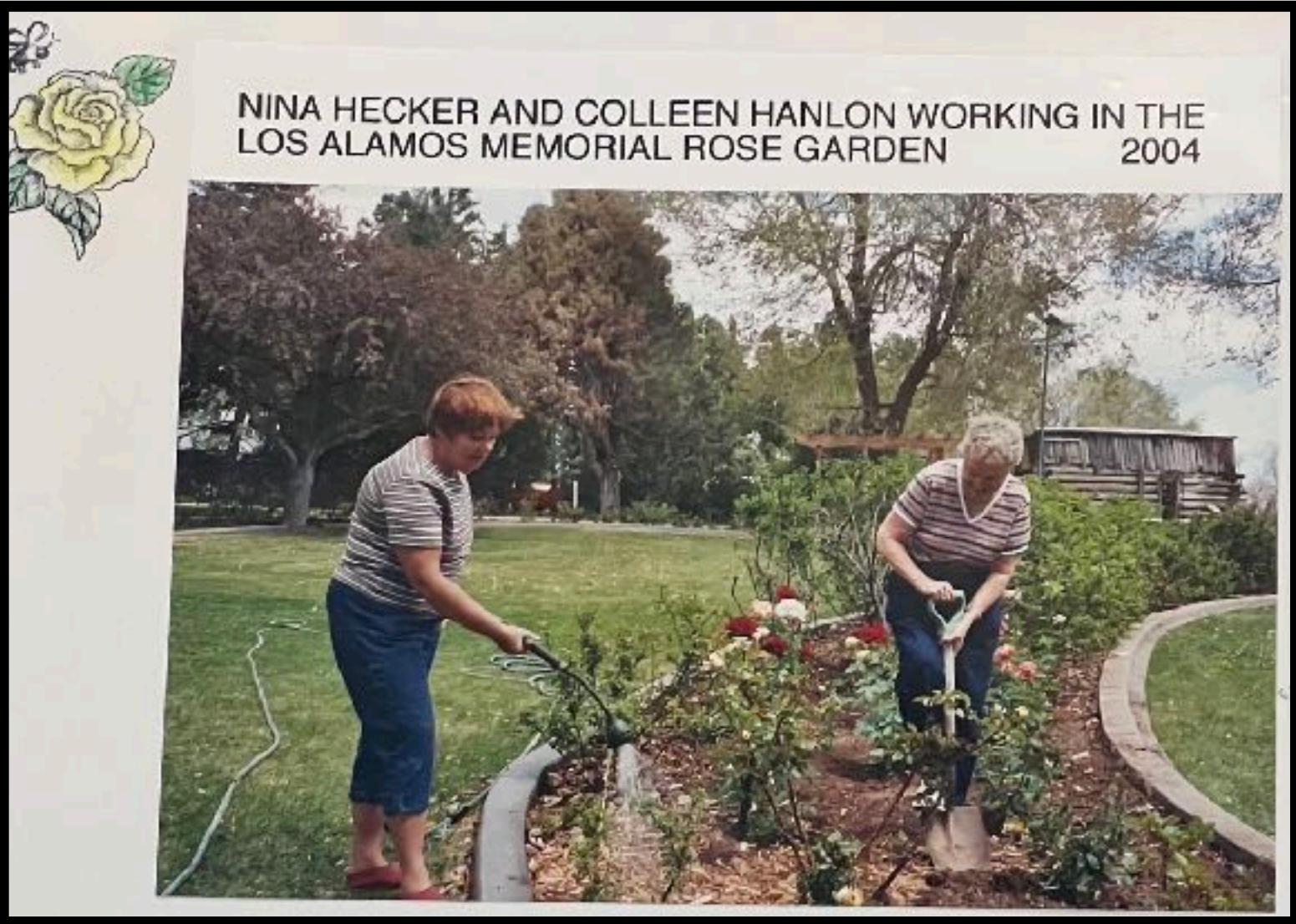
May 14, 2004



DISCOVER OUR SECRETS

SUMMER GUIDE Inside today's newspaper, find the Monitor's annual guide to summer activities in Los Alamos and the surrounding area. The guide covers top tourist attractions, local history, recreational events and more.

GARY WARREN/Monitor



Los Alamos Garden Club's Public Input to Los Alamos County Council on the Los Alamos Memorial Rose Garden Deer Problem and Proposed Solution of an Attractive Deer Fence

Presented by Kersti Rock, NMGC District II Director, Los Alamos Garden Club member on February 27, 2024

Hello, I am Kersti Rock, the current Director of New Mexico Garden Clubs District II and member of the Los Alamos Garden Club. I speak to you today about the Los Alamos Garden Club's primary mission, the Los Alamos Memorial Rose Garden, the devastation the garden is suffering from the burgeoning deer population and our club's proposed solution. We were very honored by the County Council's proclamation a year ago recognizing our 75th anniversary. We look to you today for your support in helping us protect this historic garden from predation by the local deer.

The Memorial Rose Garden is the oldest public rose garden in New Mexico. It was begun by the Los Alamos Garden Club in 1957 with an allocation of land from the Zia Parks Department. Los Alamos residents soon began to donate rose bushes in memory of loved ones and in 1958 the club obtained the current, larger plot of land from the Atomic Energy Commission. Professional landscape architect, Lila Gardner, designed the present Memorial Rose Garden. Since then, Garden Club members lovingly put in hundreds of hours each year caring for the Garden and the County Parks department has maintained the irrigation system, provided mulch and performed needed structural work. The Garden is a favorite spot for locals and visitors. It is also used for many formal events, such as weddings.

Deer have always been present but the fires, drought and nearby residents feeding the deer have resulted in a huge increase in the number of deer feeding on the rose bushes, often nearly destroying them. In addition the lovely garden is now covered with deer droppings among the bushes and all over the grass where people walk and have outdoor events.

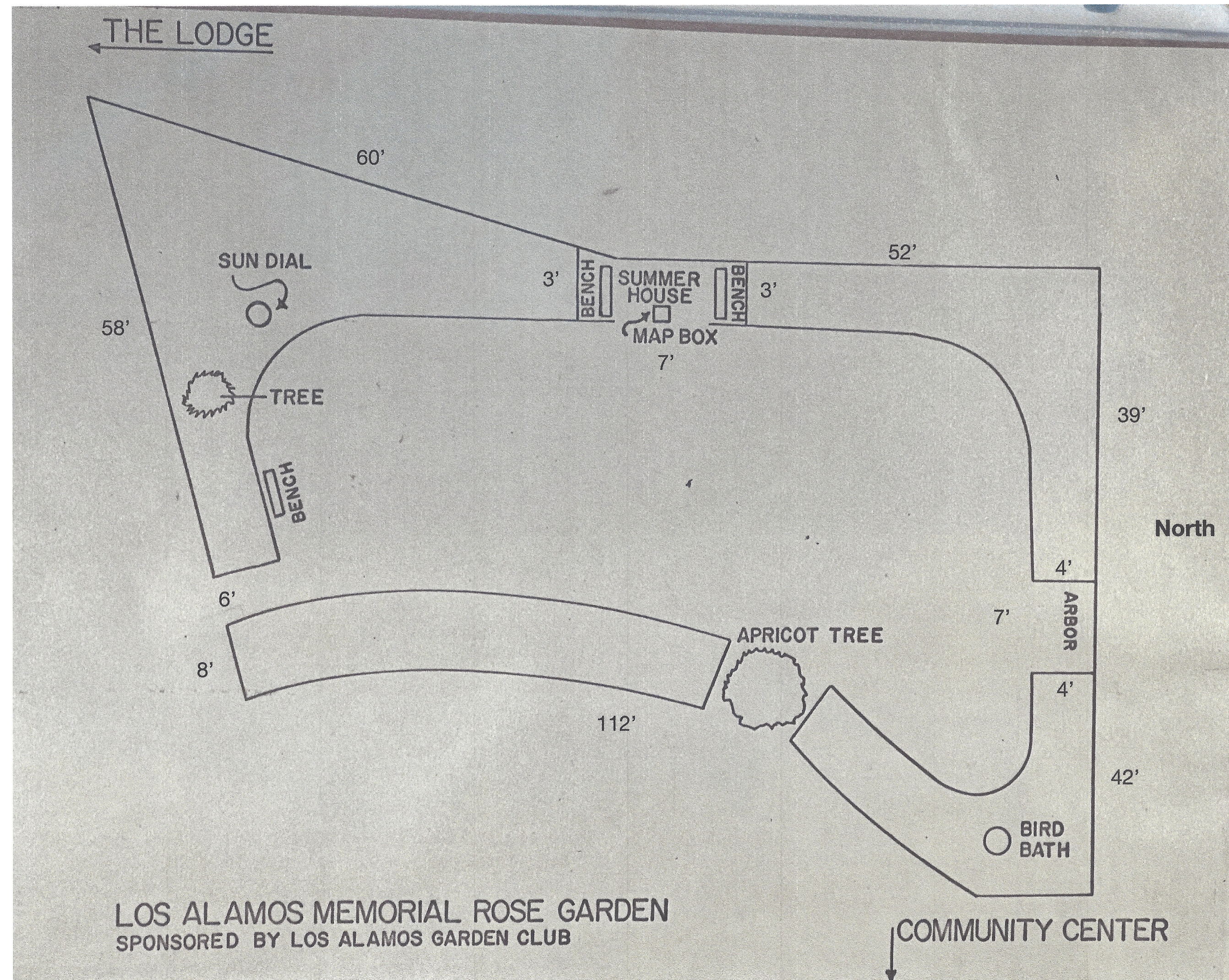
The Club has planted deer deterrent plants. Strongly scented soap has been hung from the bushes and chicken wire cages have been constructed to cover the plants. The cages are ugly and not completely effective. Spraying deer repellent chemicals is maintenance intensive and the smell can annoy human visitors. The only real and permanent solution is an attractive deer fence with gates to allow visitors and keep out the deer.

Two Albuquerque fencing companies have provided estimated quotes for an attractive, low maintenance, 8' tall metal fence that preserves visibility. The cost would likely be in the \$40 to \$60k range. The Historic Preservation Advisory Board will need to approve the chosen fencing design. For further information and context, I have brought a handout describing the Garden, the deer issue and possible fence designs.

The Los Alamos Garden Club wishes that the Council be informed of our efforts in this regard and we encourage your support in helping us work with the County to achieve a fencing solution in order to preserve this important part of the historic district.

Old Plat of the Rose Garden

- Old plat of the Rose Garden showing the shape and gate areas. *Apricot tree no longer exists.*
- Measurements taken by a Valley Fence representative in Spring 2024 estimated that just over 400 feet of fencing, including gates, would be needed. This was consistent with measurements taken earlier by garden club members.
- Three gate areas: two at about 7' wide and one about 6' wide. The 6' wide south entrance currently has no arbor and would need a top bar above the gate or a small arbor in the style of the existing wood structures.
- Swing gates, opening outward away from the garden, would be 5.5' to 6' high. Keeping the gate height lower than that of the fence would make the entrance more appealing. An overhead bar or arbor would discourage deer from jumping over the gate.



Deer Fence Criteria

- Effective in Safely Keeping Out Deer.
- Attractive to the Public. Blends well with the Historic District.
- Allows Visibility from both outside and inside the Garden
- Low Maintenance (wood requires periodic staining and preserving, metal lasts longer)
- Fence should be 8' high or at least have an 8' high visual barrier above a slightly lower fence or gate.
- Openings not to exceed 2" wide (for deer safety)
- Strong - at least 650 lbs per square foot, 1000 to 1500 lbs per square foot better
- Fence installed all the way to the ground (or very close) to keep deer from nosing under the fence

Deer Fence Proposal

DesignMaster Powder Coated Steel Welded Wire Classic Fence Panels

- Strong, medium security
- Low Maintenance
- Attractive and Preserves Visibility
- Applications: Gardens, Zoos, Dog Parks, Schools, etc.
- Choice of colors: black, green, brown, white, blue, yellow, red, grey
- Affordable: based on quote from local company (~\$42k pre-tax)
- South entry into garden (near Blue Star Memorial) will need a small arbor or overhead structure above the swing gate. This will add slightly to the cost.
- Idea: Engraved pavers under arbors to honor donors to the project.

STEEL

Fence Solutions

Need it strong? Strong and beautiful?
Count on Designmaster!

LEED Certified | Non-Toxic Powder Coating | 25-Year Limited Warranty | 8 colors

Designmaster is changing the way America fences, with steel-strong commercial and residential fence and gate solutions for virtually every need, from maximum security to ornamental projects. Our incomparable quality, product diversity, maintenance-free finishes and competitive pricing give you every reason to

CLASSIC

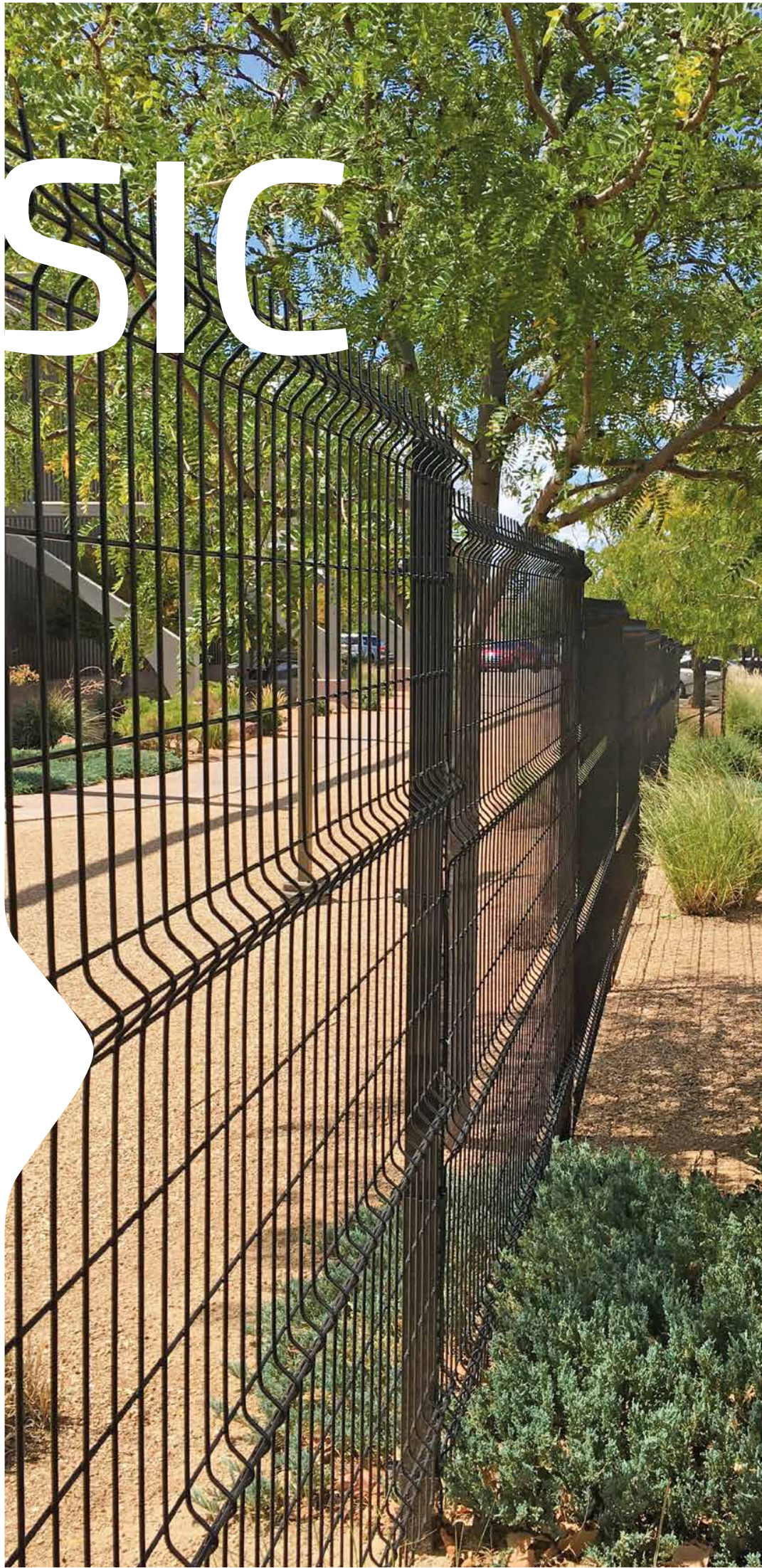
Clearly built for timeless beauty & strength.



CLEAR see-through design

TIMELESS classic beauty

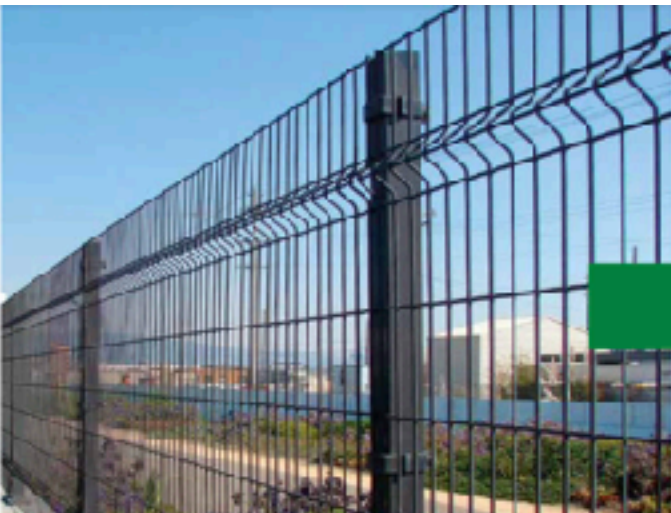
STRENGTH for mid-level security



When beauty factors into perimeter security, Classic's stately elegance is an incomparable choice. Difficult to climb or penetrate, made to last and competitively priced, Classic's v-shaped braces along the length of each steel panel add lateral strength, and its adaptability to elevation and directional changes (120° swing) make this fence ideal for nearly any application.



LEED Certified | Non-toxic Powder Coating | 25-year Limited Warranty



Security Rating: MEDIUM

SECURITY SOLUTIONS

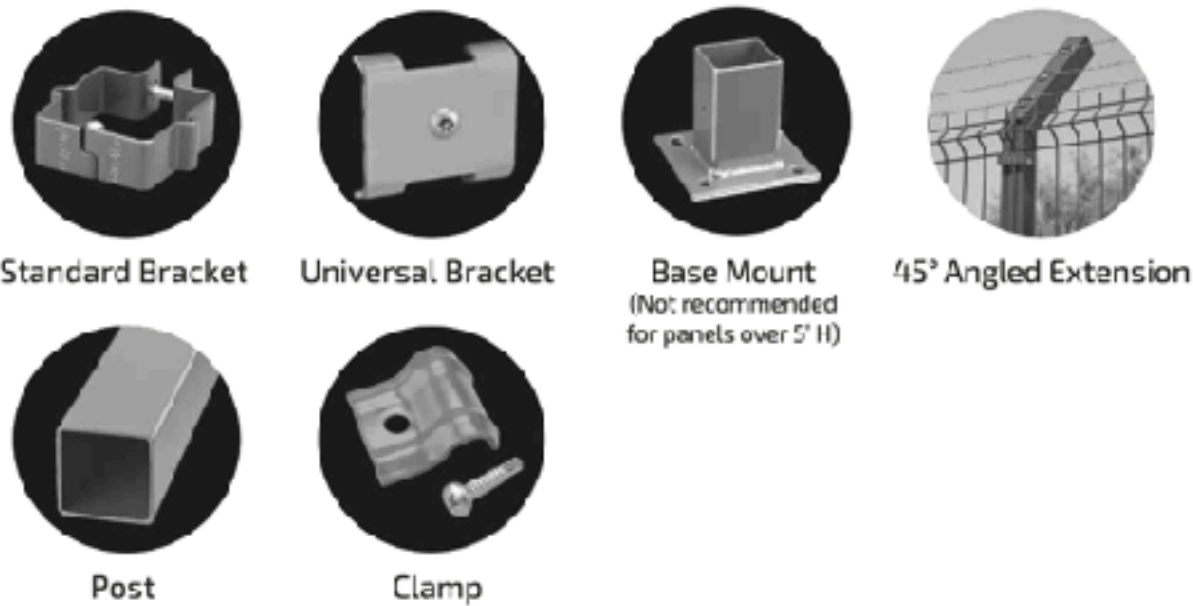
- Public Works / Public Spaces
- Businesses & Corporations
- Schools & Universities
- Amusement Parks
- Daycare Centers
- Sports Complexes
- Botanical Gardens & Zoos
- Parks, Playgrounds & Pools
- Places of Worship
- Apartment Complexes
- Hotels & Resorts
- Transportation
- Communities
- Residential Property
- Warehouses
- Distribution Facilities

PANEL

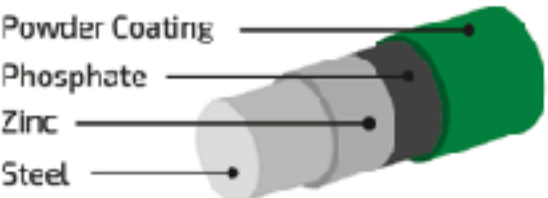
Height	Length	Opening	Steel Bracket	Gauge	Wire Breaking Load	Weld-Shear Strength
in	in	in	#	cal.	psi	lbs
25 3/8	95	2 x 6	2	6	80,000 - 100,000	1,051
48 7/8	95	2 x 6	2	6	80,000 - 100,000	1,051
62 1/16	95	2 x 6	3	6	80,000 - 100,000	1,051
73 5/16	95	2 x 6	4	6	80,000 - 100,000	1,051
97 7/8	95	2 x 6	5	6	80,000 - 100,000	1,051

Posts are available in multiple sizes and lengths.
Available with an angled extension.
Please consult one of our Distributors for additional details.

INSTALLATION COMPONENTS



COMPOSITION



25-year limited warranty on all components | Meets ASTM-510

COLORS RAL CODES



Building a beautiful world,
one fence at a time.

6411 Irvington Blvd. Ste B
Houston, TX 77022

sales@designmasterfence.com
designmasterfence.com



DesignMaster Classic Fence installation



MILAN

Clearly a beautiful
perimeter
solution



CLEAR see-through design

BEAUTIFUL & SLEEK
no pinch-points

PERIMETER-PERFECT
aesthetics & security



For solutions that demand equal parts beauty and security,
choose Milan's **steel panels, topped with horizontally-
reinforced sleek arches.**

Almost impossible to climb, made to last and competitively
priced, Milan is **the perfectly beautiful choice for medium-
security projects.**



LEED Certified | Non-toxic Powder Coating | 25-year Limited Warranty



Security Rating: **MEDIUM**

SECURITY SOLUTIONS

Amusement Parks
Botanical Gardens & Zoos
Parks & Playgrounds
Schools & Universities
Parking Garages
Public Spaces
Hotels & Resorts
Businesses & Corporations
Apartment Complexes
Residential Property

PANEL

Height	Length	Gauge	
		cal.	mm
62 15/16	87 3/8	4	6
81 7/8	87 3/8	4	6

Wire Breaking Load	Wire Tension Strength
psi	lbs (min)
55,000 – 70,000	2500

Posts are available in multiple sizes and lengths.
Please consult one of our Distributors for additional details.

INSTALLATION COMPONENTS



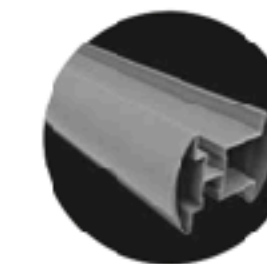
Round Lock Clamp



Square Lock Clamp

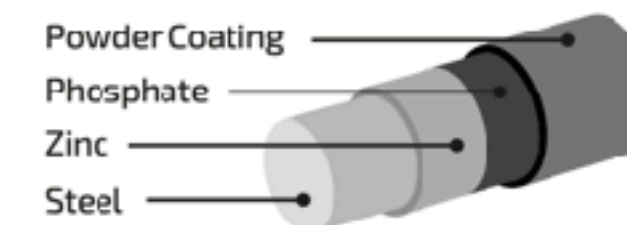


Single Clamp



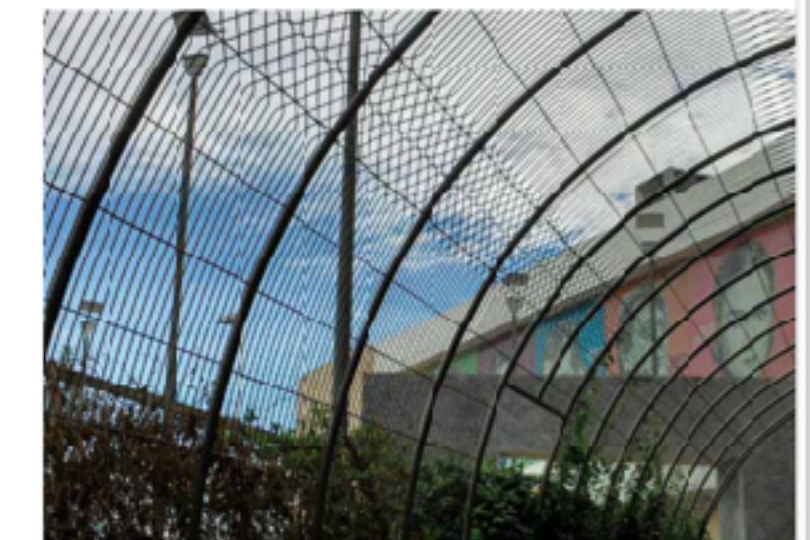
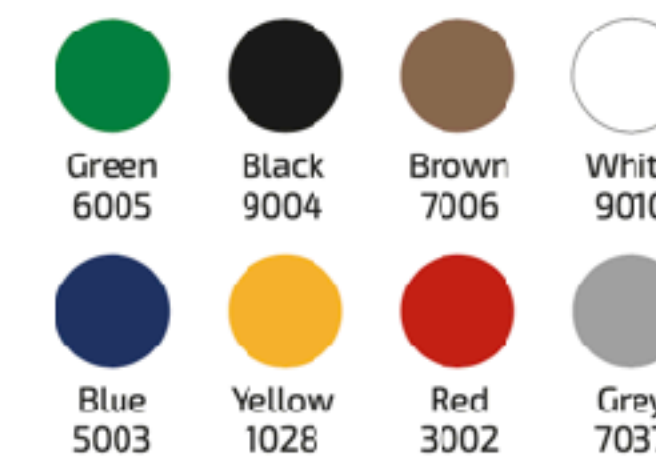
Extruded
Aluminum Posts

COMPOSITION



25-year limited warranty on all
components | Meets ASTM - 510

COLORS RAL CODES



Milan DesignMaster Fencing Installations

Milan Fence Panels are 81 7/8" high and 87 3/8" wide. Panels can be cut to better accommodate curved areas.

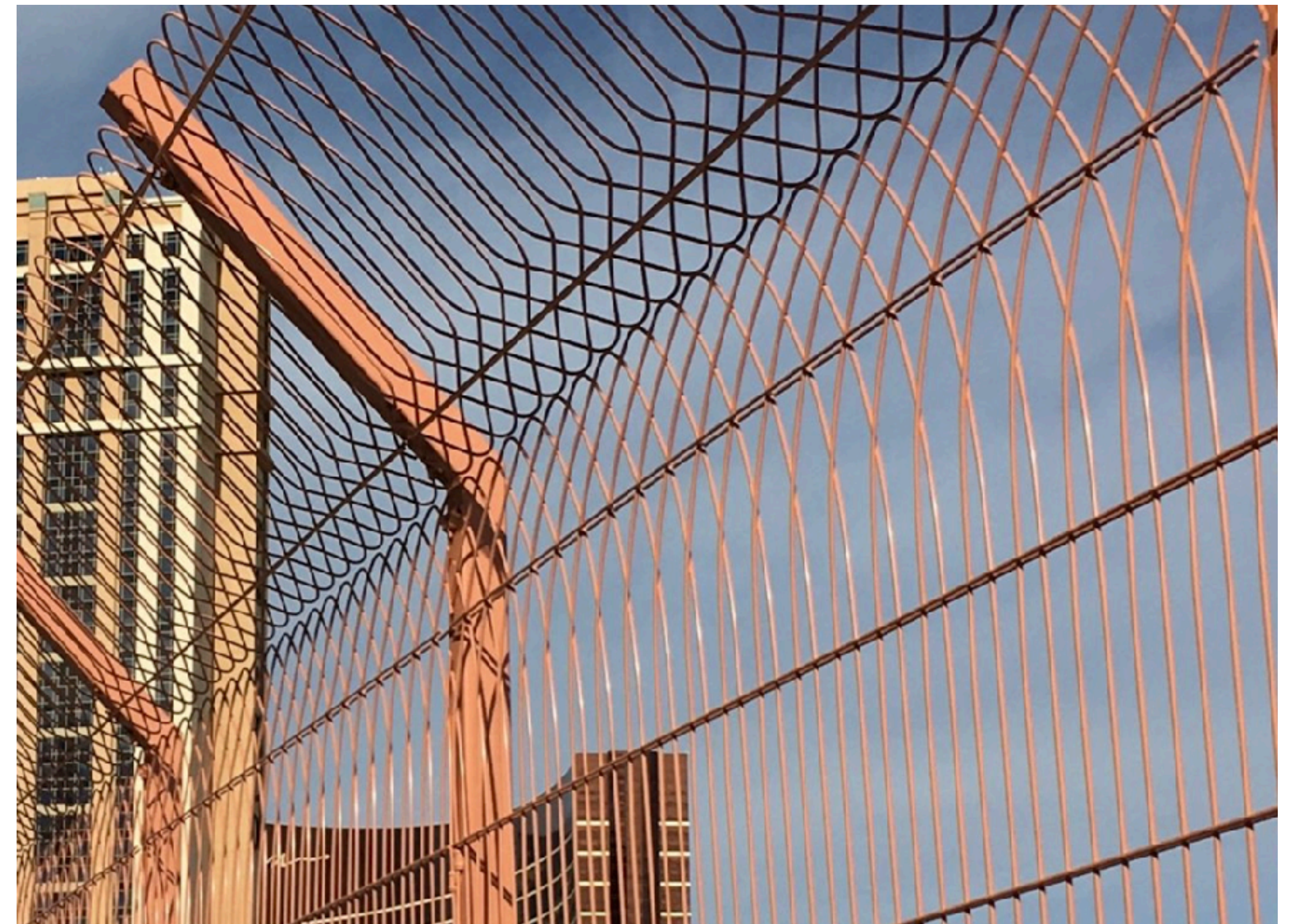
Milan Fence is a medium security fence with wire breaking load of 55,000 - 70,000 psi and wire tension strength of 2500 lbs (min)

An estimate from Valley Fence Company (New Mexico distributor) for the Milan style fence is provided.

A wire extension (see second panel) is an option to adjust for the less than 7' height. The panels can also be installed 2" above ground level.

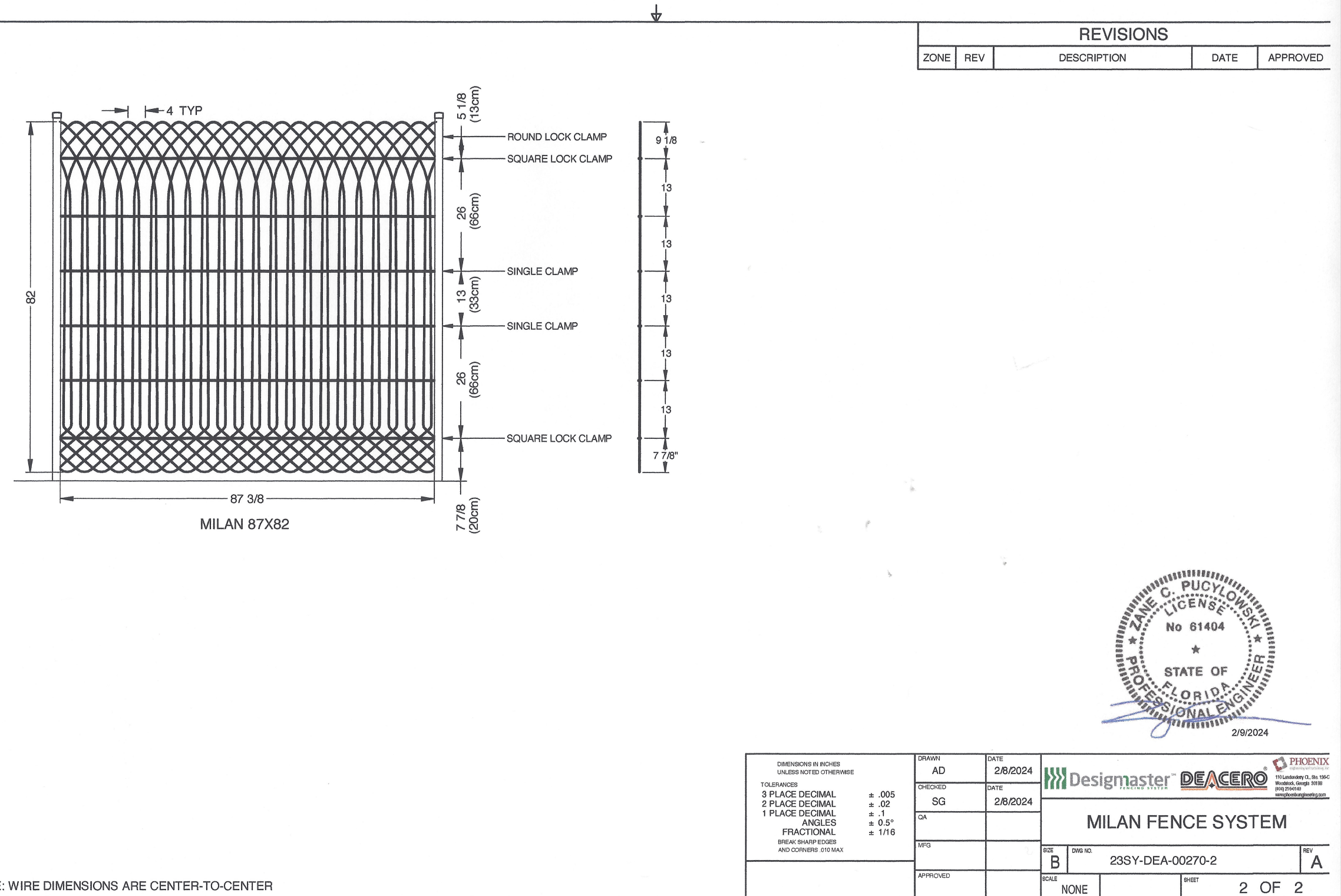
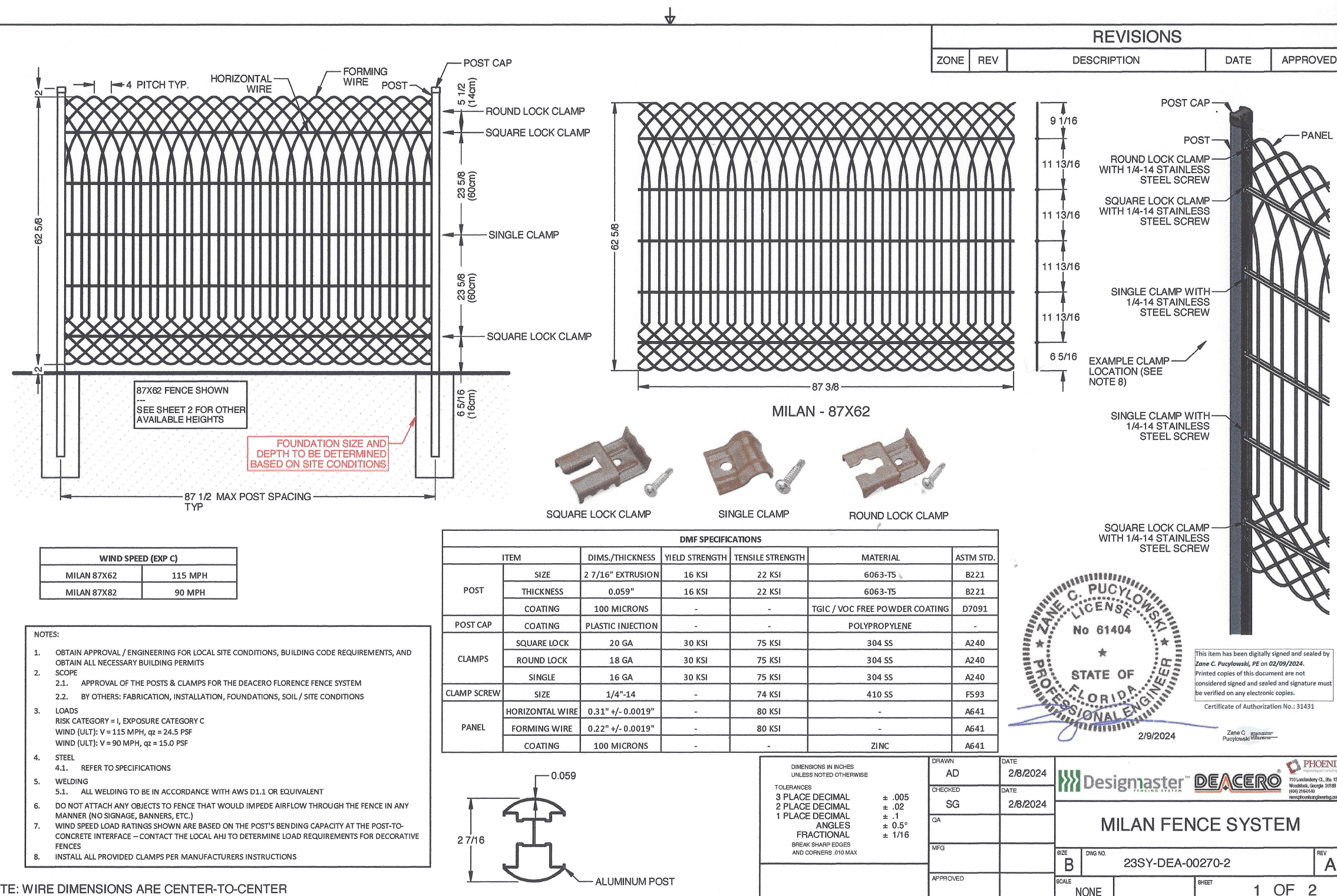


Example of a Milan fence installation

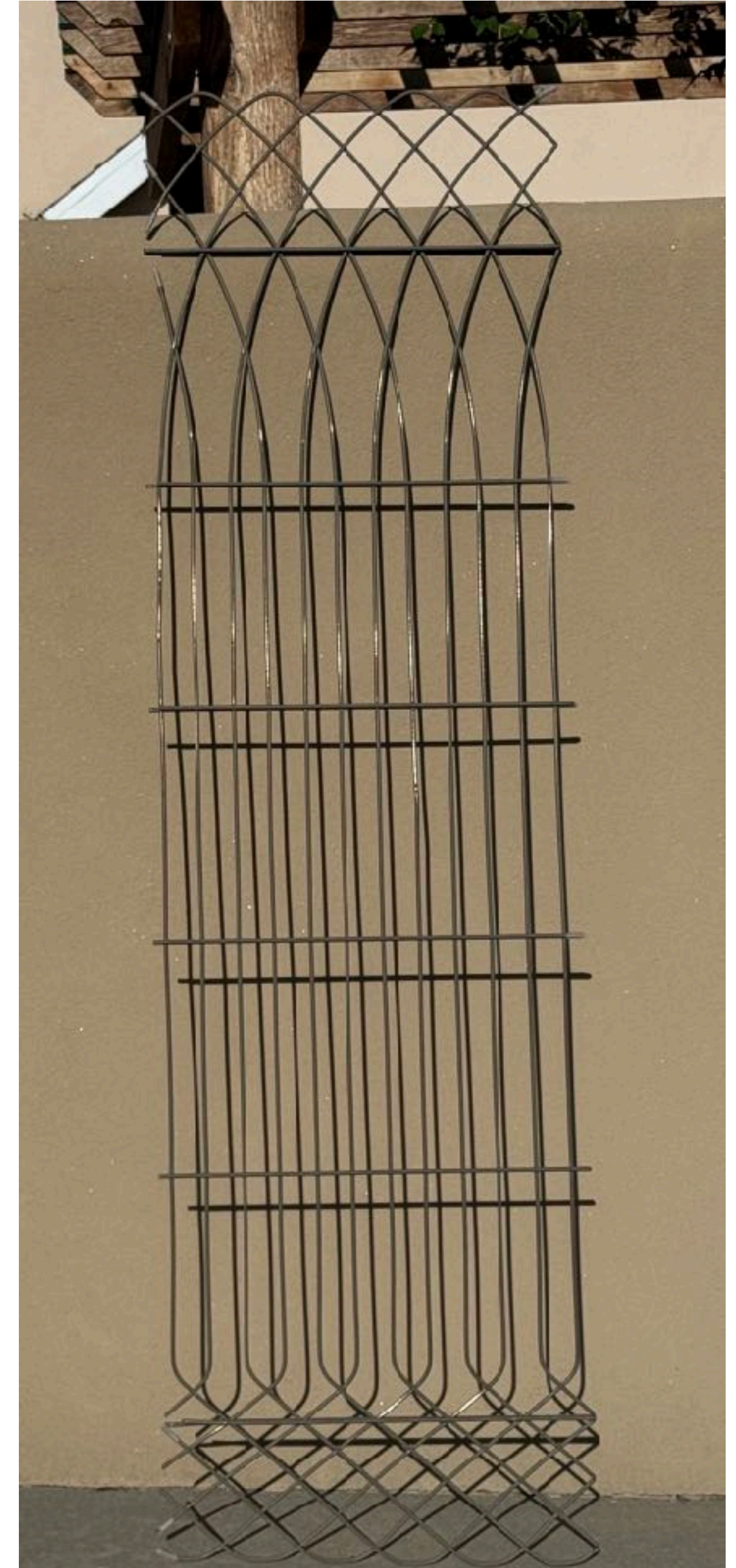


Example of a Wire Extension

Milan Fencing Specifications



Milan Fence Panel Sample in Brown Color



Historic Preservation Board approvals For the Deer Fence Proposal

- Los Alamos Historic Advisory Board approved the DesignMaster Milan style fence in brown color on June 5, 2024
- New Mexico Historic Preservation Division approved this fencing style and color on July 11, 2024



Department of Cultural Affairs

Historic Preservation Division
State of New Mexico

Michelle Lujan Grisham
Governor

Debra Garcia y Griego
Secretary

July 11, 2024

Kersti Rock
New Mexico Garden Clubs District II Director
Los Alamos Garden Club
Los Alamos, NM

RE: HPD Log #122724—Design Proposal for a deer fence to preserve the Los Alamos Memorial Rose Garden

VIA EMAIL: ankaere@gmail.com

Dear Ms. Rock:

Thank you for submitting the *Design Proposal for a Deer Fence to preserve the Los Alamos Memorial Rose Garden* to the New Mexico State Historic Preservation Office for review and comment.

A review of our cultural resource database indicates a portion of the property has undergone a previous cultural resource survey. The review also indicates an archaeological site is located to the north of the proposed project area. This site has been extensively investigated. No cemeteries or known burial grounds are located on the property, nor are any known archaeological sites within the project boundary.

Because the property is on private land, a survey is not required. Given that the property has been in use as a public rose garden since 1957, it is unlikely that intact archaeological remains are present. However, there remains the possibility for unidentified cultural resources to be found within the project area. If ground disturbing activities relating to the project result in the discovery of archaeological materials (i.e., ceramic sherds, lithic artifacts, bone, darkly stained sediment etc.), we recommend that construction activity is stopped and our office is contacted for further consultation.

If you have any questions or concerns, please contact me at cortney.wands@dca.nm.gov or (505) 476-1341.

Sincerely,

A handwritten signature in black ink, appearing to read "Cortney Wands".

Cortney Wands
Archaeologist/Archaeological Review

May 29, 2024: Estimate for Milan Fence in Brown (on-site measurements taken by Valley Fence representative)


Includes gates and installation for DesignMaster Milan Fence

APACHE CONSTRUCTION CO., INC. d/b/a
VALLEY FENCE COMPANY

1932 COORS BLVD SW
ALBUQUERQUE, NM. 87121

Office: (505) 877-1155
Fax: (505) 877-0018 | (505) 877-5301

Commercial Estimator: Joe Sepulveda | jsepulveda@vfcn.com
Commercial Division Manager: Rico Flores | rflores@vfcn.com



NEW MEXICO'S #1 FENCE COMPANY • SINCE 1969

PROPOSAL

PROJECT:

LOS ALAMOS MEMORIAL ROSE GARDEN
MILAN FENCE (Brown)

BID DATE:

Wednesday, May 29, 2024

BID TIME:

DUE TO THE VOLATILITY IN THE STEEL MARKET, THIS
QUOTE IS ONLY VALID FOR 14 DAYS FROM QUOTE DATE

ITEM	DESCRIPTION	QTY	UNIT	UNIT PRICE	AMOUNT
1	82" MILAN FENCE Install 2" Above Grade	385.00	LF	\$74.59	\$28,717.15
2	82"X7' DOUBLE GATE	1.00	EA	\$4,639.83	\$4,639.83
3	82"X7' DOUBLE GATE	1.00	EA	\$4,639.83	\$4,639.83
4	82"X6' GATE	1.00	EA	\$4,152.09	\$4,152.09
	TOTAL (INCLUDES ONE MOB. ADDITIONAL MOBS ADD \$2,500 PER MOB. TAXES (IF APPLICABLE) NOT INCLUDED)				\$42,148.90
ADDENDA:	THE FOLLOWING ADDENDUMS ARE ACKNOWLEDGED IN THIS PROPOSAL:				
NOTE:	PROPOSAL IS BASED ON COMPLETE, "ALL OR NONE" BID PACKAGE. *PROPOSAL IS BASED ON WAGE DECISION NUMBERS:				



An attractive deer fence and gates will allow the Los Alamos Memorial Rose Garden to flourish and continue to provide a beautiful gathering spot that memorializes and honors local residents and their loved ones.

