



# County of Los Alamos

Los Alamos, NM 87544  
www.losalamosnm.us

## Council Meeting Staff Report

August 20, 2025

---

<b>Agenda No.:</b>	4.b.
<b>Indexes (Council Goals):</b>	Quality Excellence - Effective, Efficient, and Reliable Services, DPU FY26 - 1.0 Provide Safe and Reliable Utility Services
<b>Presenters:</b>	James Alarid
<b>Legislative File:</b>	20530-25

---

### Title

Award Utilities Portion of IFB26-18 - Denver Steels Phase II Improvements Project to TLC Plumbing and Utility, in the amount of \$1,760,773.00 plus Applicable Gross Receipts Tax, and Approval of Budget Revision 2026-06

### Recommended Action

**I move that the Board of Public Utilities recommend the award of the Utilities portion of IFB26-18 for the Denver Steels Phase II Improvements Project to TLC Plumbing and Utility, in the amount of \$1,760,773.00 and a contingency in the amount of \$176,077.00 for a total project amount of \$1,936,850.00, plus NMGR, and forward to Council for approval. I further move that the Board recommend Budget Revision 2026-06, forward to Council for approval, and include a copy in the minutes for the record.**

### Utilities Manager's Recommendation

The Utilities Manager recommends that the Board approve the motion as presented and forward it to the Council for approval.

### Body

On July 17<sup>th</sup>, 2025, the Denver Steels Phase II Project was advertised for bids. Bids were received on August 7<sup>th</sup>, 2025, and one responsive bid was received from TLC Plumbing and Utility.

The Denver Steels Phase II project is a joint roadway and utility upgrade project with the Public Works Department. The roadway improvements include the construction of new sidewalks, ADA ramps, curb and gutter, storm drain upgrades, and a new asphalt surface. The specific areas undergoing work are 36th Street between Orange Street and Ridgeway Drive, Pueblo Drive between 36th Street and 35th Street, Questa Drive between 36th Street and 35th Street, and Ridgeway Drive between 36th Street and 35th Street. Additionally, there is a bid alternative for broadband, which involves installing broadband conduits and vaults along 36th, Pueblo Drive, Questa Drive, and Ridgeway Drive.

For the utilities portion, the project entails replacing an existing 6-inch cast-iron water main, which has reached the end of its service life, with approximately 4,000 linear feet of new 8-inch C-900 PVC pipe. As part of this installation, existing water meters will be removed and relocated to new locations -either behind the curb and gutter or within the sidewalk. The project will include the installation of 83 new water meters with 36-inch meter cans, six new fire hydrants, and a new 1-inch PEX service line.

### Alternatives

If the Board decides not to award the Denver Steels Phase II Improvements Project, staff will coordinate with the Public Works Department to re-bid or defer the project.

### Fiscal and Staff Impact/Planned Item

\$1,500,000 is budgeted in FY 2026 for the waterline replacement. The total project budget, including 10% contingency and NMGR, will be \$2,073,640.00. DPU staff are seeking approval of Budget Revision 2026-06 in the amount of \$573,640.00 to cover the bid cost overrun above this year's

---

budgeted amount. One of the causes of this overrun was Phase I added 600 feet of additional road to reconstruct in this Phase II and this will be deducted from next year's Phase III project. Also, the bid price for this work was elevated from DPU's estimate at \$1.5 Million. The project is funded by Drinking Water State Revolving Loan DW-6651 which has been secured to fund Phase II and Phase III of the Denver Steels waterline replacement in the amount of \$2,727,000. Once Phase III design is completed, staff will update the construction estimate and make a request to increase the loan amount at that time.

**Attachments**

A - Denver Steels Utility Construction Plans

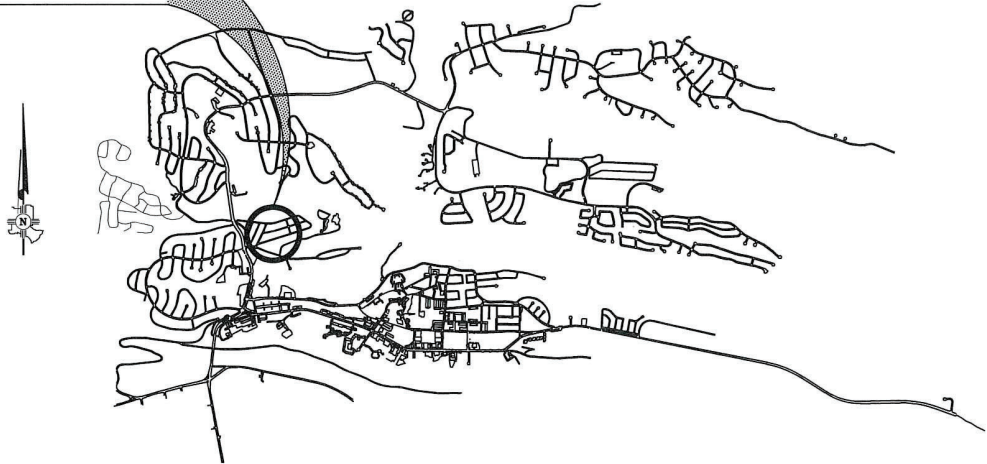
B - Budget Revision 2026-06

Attachment A

Drawing File: L:\PROJECTS\IFB 26-18 DENVER STEELS PHASE II\DESIGN\CAD\_DWG\IFB 26-18 DENVER STEELS OVERALL.DWG

IFB 26-18 DENVER STEELS PHASE II  
UTILITY IMPROVEMENT PROJECT  
LOS ALAMOS COUNTY

PROJECT LOCATION



LOS ALAMOS VICINITY MAP

NOT TO SCALE

SHEET INDEX

- 8-1 VICINITY MAP AND SHEET INDEX
- 8-2 CONSTRUCTION NOTES
- 8-3 WATER PLAN 36TH ST.
- 8-4 WATER PLAN 36TH ST.
- 8-5 WATER PLAN 36TH ST.
- 8-6 WATER PLAN 36TH ST. & RIDGEWAY DR.
- 8-7 WATER PLAN RIDGEWAY DR.
- 8-8 WATER PLAN RIDGEWAY DR. & 35TH ST.
- 8-9 WATER PLAN 35TH ST. & QUESTA DR.
- 8-10 WATER PLAN 35TH ST. & PUEBLO DR.
- 8-11 WATER PLAN PUEBLO DR.
- 8-12 WATER PLAN PUEBLO DR. & 36TH ST.
- 8-13 WATER PLAN 37TH ST.-36TH ST. & QUESTA DR.
- 8-14 WATER PLAN QUESTA DR.
- 8-15 WATER PLAN QUESTA DR. & 35TH ST.
- 8-16 DETAIL SHEET
- 8-17 STANDARD DETAILS
- 8-18 STANDARD DETAILS CONTINUED

APPROVED BY:

*[Signature]*  
DEPARTMENT OF PUBLIC  
UTILITIES PROJECT ENGINEER

DATE 7/9/2025

*[Signature]*  
DEPARTMENT OF PUBLIC UTILITIES  
PROJECT MANAGER

DATE 07/09/2025



REVISION DESCRIPTION	
NO.	
1	
2	
3	
4	
5	

DESIGNED BY:	J.A.M.
DRAWN BY:	L.A.M.
APPROVED BY:	J.A.M.
DATE:	07/08/2025
SCALE:	N/A

IFB 26-18 DENVER STEELS  
PHASE II PROJECT



INCORPORATED COUNTY  
OF LOS ALAMOS  
DEPARTMENT OF PUBLIC  
UTILITIES  
1000 CENTRAL AVE. SUITE 130  
LOS ALAMOS, NEW MEXICO 87544  
(505) 662-4333 FAX: (505) 662-5005

SHEET  
8-1



Drawing File: L:\PROJECTS\IFB 2026-18 DENVER STEELS PHASE II\DESIGN\CAO\_DWG\DENVER STEELS OVERALL.DWG

## DEPARTMENT OF PUBLIC UTILITIES CONSTRUCTION NOTES

### GENERAL

1. DEPTH OF TRENCH MAY BE DEEPER ALONG CERTAIN SEGMENTS OF PIPELINE TO CLEAR EXISTING UTILITIES AND TO AVOID THE CREATION OF HIGH POINTS ALONG THE ALIGNMENT. NO ADDITIONAL PAYMENT WILL BE MADE FOR INSTALLING PIPE DEEPER THAN MINIMUM REQUIRED DEPTH.
2. ALL WATER, WASTEWATER, GAS AND ELECTRIC UTILITY INSTALLATIONS, RE-CONSTRUCTION OR REPAIR SHALL COMPLY WITH LOS ALAMOS COUNTY DEPARTMENT OF PUBLIC UTILITIES (DPU) CONSTRUCTION STANDARDS AND THE RELEVANT STANDARD DRAWINGS. THE CONSTRUCTION STANDARDS CAN BE FOUND AT:

<https://losalamosnm.egnyc.com/app/index.do#storage/files/1/Private/dpu.engineering/DPU%20Construction%20Standards>

3. SUBMITTALS FOR ALL GAS, WATER, SEWER, ELECTRIC AND COUNTY OWNED COMMUNICATION INFRASTRUCTURE SHALL BE SUBMITTED TO THE DPU PROJECT MANAGER FOR REVIEW AND APPROVAL PER THE DPU STANDARD SPECIFICATIONS. SUBMITTALS SHALL INCLUDE THE COVER SHEET IN THE DPU CONSTRUCTION STANDARDS.
4. THE CONTRACTOR SHALL RETAIN THE SERVICES OF A NEW MEXICO LICENSED PROFESSIONAL SURVEYOR (NMPS), FOR CONSTRUCTION STAKING, AS WELL AS VERIFICATION OF ALL CRITICAL HORIZONTAL AND VERTICAL CONTROL DATA SHOWN ON THESE CONTRACT DRAWINGS. CONTRACTOR SHALL PROVIDE COORDINATE INFORMATION FOR ALL NEW SAS MANHOLES, WATER AND GAS VALVES, ALL BASED ON STATE PLANE COORDINATES.
5. FOR ANY WORK INVOLVING NEW WATER, GAS OR SEWER PIPELINE CONNECTING TO AN EXISTING PIPELINE, CONTRACTOR SHALL OBTAIN A PENETRATION PERMIT FROM THE COUNTY, AT LEAST 48 HOURS IN ADVANCE OF ANY SUCH WORK. THE PERMIT APPLICATION FORM FOR THIS PERMIT CAN BE FOUND AT:

[https://www.losalamosnm.us/Search-Results?div\\_OC%20CL%20Public%20Site%20Search=keyword=penetration%20permit](https://www.losalamosnm.us/Search-Results?div_OC%20CL%20Public%20Site%20Search=keyword=penetration%20permit)

6. CONTRACTOR SHALL BE RESPONSIBLE FOR POTHOLING, TO DETERMINE THE EXACT LOCATION OF EXISTING UTILITIES, PRIOR TO PERFORMING ANY EXCAVATION WORK.
7. PRIOR TO CONNECTING NEW WATER LINES INTO THE EXISTING SYSTEMS THE LOCATE WIRE SHALL BE TESTED AS FOLLOWS. CONTRACTOR WILL ENSURE THAT ALL LOCATE WIRE HAS BEEN INSTALLED AND MADE ACCESSIBLE IN ALL REQUIRED LOCATIONS. CONTRACTOR WILL VERIFY CONTINUITY IN THE LOCATE WIRE WITH THEIR OWN LOCATE EQUIPMENT. THE LOCATED LOCATION WILL BE PAINTED WITH WHITE PAINT AND DPU STAFF WILL THEN VERIFY THE LOCATION AND CONTINUITY OF THE LOCATE WIRE WITH THEIR OWN EQUIPMENT. ANY AREAS WHERE CONTINUITY IS LOST MUST BE REPAIRED AND RE-VERIFIED BY DPU STAFF TO BE LOCATEABLE. CONTRACTOR SHALL COORDINATE THE LOCATE WIRE VERIFICATION WITH DPU PROJECT MANAGER.
8. INFORMATION SPECIFICALLY STATED IN THE CONTRACT DRAWINGS, OR WHEN THE DPU PROJECT MANAGER SPECIFICALLY IDENTIFIES IN THE FIELD, CRITICAL DATA (X, Y, AND Z) RELATED TO WATER VALVES OF ALL KINDS, WATER METERS, FIRE HYDRANTS, CULVERT INLET OR OUTLET INVERTS, WASTEWATER COLLECTION MANHOLE INVERTS AND RIMS, CUSTOMER END OF WASTEWATER SERVICE CONNECTION PIPES/CLEANOUT, SHALL BE COLLECTED BY THE CONTRACTOR'S SURVEYOR FOR THE RECORD DRAWINGS TO BE COMPLETE.
9. CONTRACTOR SHALL BE SOLELY RESPONSIBLE FOR THE PROTECTION OF SURVEY MONUMENTS OR MARKS. IF CONTRACTOR'S ACTIVITIES CAUSED DAMAGE TO ANY OF THESE MARKS, CONTRACTOR SHALL RETAIN, AT THEIR OWN EXPENSE, THE SERVICES OF A NMLPS, TO RE-ESTABLISH THE MARKS IN COMPLIANCE WITH STANDARDS AND PROCEDURES SET FORTH BY THE "GEODETIC MARK PRESERVATION GUIDEBOOK".
10. CONTRACTOR SHALL COMPLY WITH ALL PROVISIONS OF THE CLEAN WATER ACT, RELATED TO STORM WATERS. CONTRACTOR SHALL PREPARE, EXECUTE AND MAINTAIN A STORM WATER POLLUTION PREVENTION PLAN (SWPPP), IF THE AREA DISTURBED BY THE CONSTRUCTION OPERATIONS IS ONE ACRE OR MORE IN SIZE. COSTS ASSOCIATED WITH CLEAN WATER ACT COMPLIANCE, INCLUDING BMP'S, SHALL BE INCIDENTAL TO THE PROJECT'S COST.
11. CONTRACTOR SHALL BE SOLELY RESPONSIBLE FOR THE COSTS OF REPAIRING ANY DAMAGE OR ALTERATIONS CAUSED DURING EXECUTION OF THIS PROJECT, TO THE ORIGINAL CONDITION OF THIRD PARTY'S PROPERTY (E.G. STRUCTURES, EXISTING UTILITIES OR UTILITY EASEMENTS) LOCATED WITHIN OR OUT OF THE PROJECT BOUNDARIES.
12. CONTRACTOR SHALL BE SOLELY RESPONSIBLE FOR THE PROTECTION OF ALL PROJECT-RELATED MATERIALS OR EQUIPMENT, BEFORE INSTALLATION, UNTIL FINAL WRITTEN ACCEPTANCE APPROVAL OF THE PROJECT BY THE DPU PROJECT MANAGER AND THE COUNTY.
13. ALL MATERIAL QUALITY TESTS SHALL BE PERFORMED BY A RECOGNIZED LABORATORY. SUCH A LABORATORY SHALL BE OPERATED UNDER THE AUSPICES/DIRECTION OF AN NMPE. NAME AND CONTACT OF THE LABORATORY SHALL BE SUBMITTED BY THE CONTRACTOR TO THE DPU PROJECT MANAGER AS SOON AS PRACTICAL AFTER THE CONTRACTOR'S RECEIPT OF THE NOTICE TO PROCEED.
14. CONTRACTOR SHALL PROVIDE THE INSTALLATION AND MAINTENANCE OF ANY NECESSARY TRAFFIC CONTROL DEVICES AS OTHERWISE REQUIRED BY LOS ALAMOS COUNTY TRAFFIC MANAGER. TRAFFIC CONTROL DEVICES SHALL COMPLY WITH THE MOST CURRENT EDITION OF THE MANUAL OF UNIFORM TRAFFIC CONTROL DEVICES (MUTCD), BUT MAY BE REVISED UNDER WRITTEN

DIRECTION FROM THE COUNTY TRAFFIC ENGINEER.

15. CONTRACTOR SHALL NOTIFY THE DPU PROJECT MANAGER, AT LEAST FIVE (5) DAYS IN ADVANCE OF ANY WORK THAT MAY AFFECT THE OPERATION OF THE PUBLIC UTILITY SYSTEMS (WATER, WASTEWATER, GAS AND ELECTRIC).
16. ALL STRUCTURAL OR UTILITY TRENCH FILL OR BACKFILL SHALL BE FREE OF VEGETATION AND DEBRIS AND CONTAIN NO ROCKS LARGER THAN 3-INCHES.
17. ALL AREAS DISTURBED BY THE CONSTRUCTION ACTIVITIES OF THIS PROJECT, INCLUDING PRIVATE LANDSCAPING, SHALL BE RESTORED.

### WATER PIPELINES

1. THE PIPELINE SHALL BE SUPPLIED AND INSTALLED IN STRICT COMPLIANCE WITH THE DEPARTMENT OF PUBLIC UTILITIES CONSTRUCTION STANDARDS. CONTRACTOR SHALL NOTIFY THE DPU PROJECT MANAGER IMMEDIATELY UPON ENCOUNTERING FIELD CONDITIONS THAT MAY REQUIRE DEVIATIONS FROM THESE STANDARDS.
2. CONTRACTOR SHALL INSTALL PIPELINE SO THAT HIGH POINTS ARE NOT CREATED, UNLESS SPECIFICALLY SHOWN ON APPROVED CONSTRUCTION DRAWINGS. THE PIPE SHALL BE PLACED WITH A UNIFORM GRADE, NO VERTICAL BENDS ARE ALLOWED.
3. MINIMUM BURY SHALL BE 48 INCHES FOR MAINS AND 36 INCHES FOR SERVICE LINES, AT ALL POINTS ALONG THE ALIGNMENT.
4. ALL FIRE HYDRANTS SHALL BE INSTALLED WITH A MINIMUM 4-FOOT HORIZONTAL CLEARANCE ALL AROUND THEM.
5. CONTRACTOR SHALL BE FULLY RESPONSIBLE FOR THE DISINFECTION, CHLORINATION, CHLORINE RESIDUAL TESTING, AND HYDROSTATIC (PRESSURE) TESTING OF ALL WATER PIPES INSTALLED. PRESSURE TEST SHALL BE DOCUMENTED ON FORM INCLUDED IN STANDARD SPECIFICATION. DPU PROJECT MANAGER SHALL WITNESS ALL SUCH TESTING.

### SANITARY SEWER PIPELINES

1. PARALLEL PUBLIC WATER AND SANITARY SEWER LINES SHALL HAVE A MINIMUM HORIZONTAL CLEARANCE (SEPARATION BETWEEN THEM) OF 10 FEET, PLUS A VERTICAL CLEARANCE OF 1 FEET, WHEREVER WATER AND SAS LINES CROSS. WATER LINES SHALL ALWAYS BE ABOVE THE SAS LINE, UNLESS OTHERWISE AUTHORIZED BY OWNER, IN RESPONSE TO PREVIOUSLY UNKNOWN. SPECIFIC REQUIREMENTS FOR SUCH A NON-STANDARD INSTALLATION SHALL BE ESTABLISHED BY THE DPU PROJECT MANAGER.
2. CONTRACTOR SHALL BE SOLELY RESPONSIBLE FOR PERFORMING OR COORDINATING PRESSURE TEST OF ALL GRAVITY-FLOW SEWER LINES, AS WELL AS THEIR TELEVISION INSPECTION, PRIOR TO INSTALLING ANY PAVEMENT OR ASPHALT ABOVE THE SEWER LINE.
3. ALL GRAVITY SEWER LINE SEGMENTS BETWEEN MANHOLES, INCLUDING ANY SAS SERVICE LINES WITHIN THE SEWER UTILITY CORRIDOR, SHALL BE FLUSHED, TELEVIEWED AND PRESSURE-TESTED BY THE CONTRACTOR BEFORE THEIR INSTALLATION CAN BE DEEMED COMPLETE BY THE DPU PROJECT MANAGER.
4. CONTRACTOR SHALL REVIEW INSPECTION TAPES IN DETAIL, TO IDENTIFY ANY DEFICIENCIES AND CORRECT THEM AS NECESSARY, PRIOR TO SUBMITTING TAPES TO OWNER. ALL VIDEO TAPES SHALL BE FILMED AND ASSEMBLED IN SEQUENTIAL ORDER AND BE PROPERLY LABELED. LINES AND MANHOLES SHALL BE IDENTIFIED BY THE NAMES AND STATIONING GIVEN IN THE APPROVED CONSTRUCTION DRAWINGS. VIDEO TAPES SHALL BE SUBMITTED TO THE DPU PROJECT MANAGER FOR REVIEW PRIOR TO OWNER ACCEPTANCE OF THE SEWER INSTALLATION.
5. SANITARY SEWER MAINS SHALL BE PVC SDR 35, INSTALLED ON CLASS BEDDING OR BETTER, PER THE TRENCH DETAIL IN DPU CONSTRUCTION STANDARDS. ALL SEWER MAINS SHALL HAVE 8-INCH MINIMUM DIAMETER.
6. PRESSURE TESTING OF GRAVITY SAS SHALL BE PERFORMED BY PRESSURIZING THE LINES TO 5 PSI, AND VERIFYING NO PRESSURE LOSS OCCURS UPON HOLDING THE PRESSURE FOR A PERIOD OF ONE HOUR. PRESSURE TEST SHALL BE DOCUMENTED ON FORM INCLUDED IN STANDARD SPECIFICATION.
7. SANITARY SEWER CONNECTIONS ON NEW SEWER MAINS SHALL BE MADE OF SDR-35 GASKETED WYES. MECHANICALLY-STRAPPED SADDLE-TYPE TEES CAN BE USED ONLY WHEN APPROVED BY DPU PROJECT MANAGER.
8. IF OVER-EXCAVATION OCCURS DURING THE COURSE OF THE WORK, CONTRACTOR SHALL REMEDY AND REPAIR, AT THE CONTRACTOR'S EXPENSE, BY INSTALLING AND COMPACTING CLASSIFIED FILL IN COMPLIANCE WITH CLASS-D BEDDING OR BETTER.
9. CONTRACTOR SHALL OBTAIN ONE SET OF BACKFILL DENSITY TESTS PER STANDARD SPECIFICATION 202 EXCAVATION, TRENCHING AND BACKFILL SECTION 3.6.
10. CONTRACTOR SHALL ARRANGE FOR TEST RESULTS TO BE SUBMITTED BY THE LABORATORY DIRECTLY TO THE DPU PROJECT MANAGER.



REVISION DESCRIPTION					
NO.	1	2	3	4	5

DESIGNED BY:	J.A.M.
DRAWN BY:	J.A.M.
APPROVED BY:	J.A.M.
DATE:	07/08/2025
SCALE:	N/A

IFB 26-18 DENVER STEELS  
PHASE II PROJECT  
CONSTRUCTION NOTES



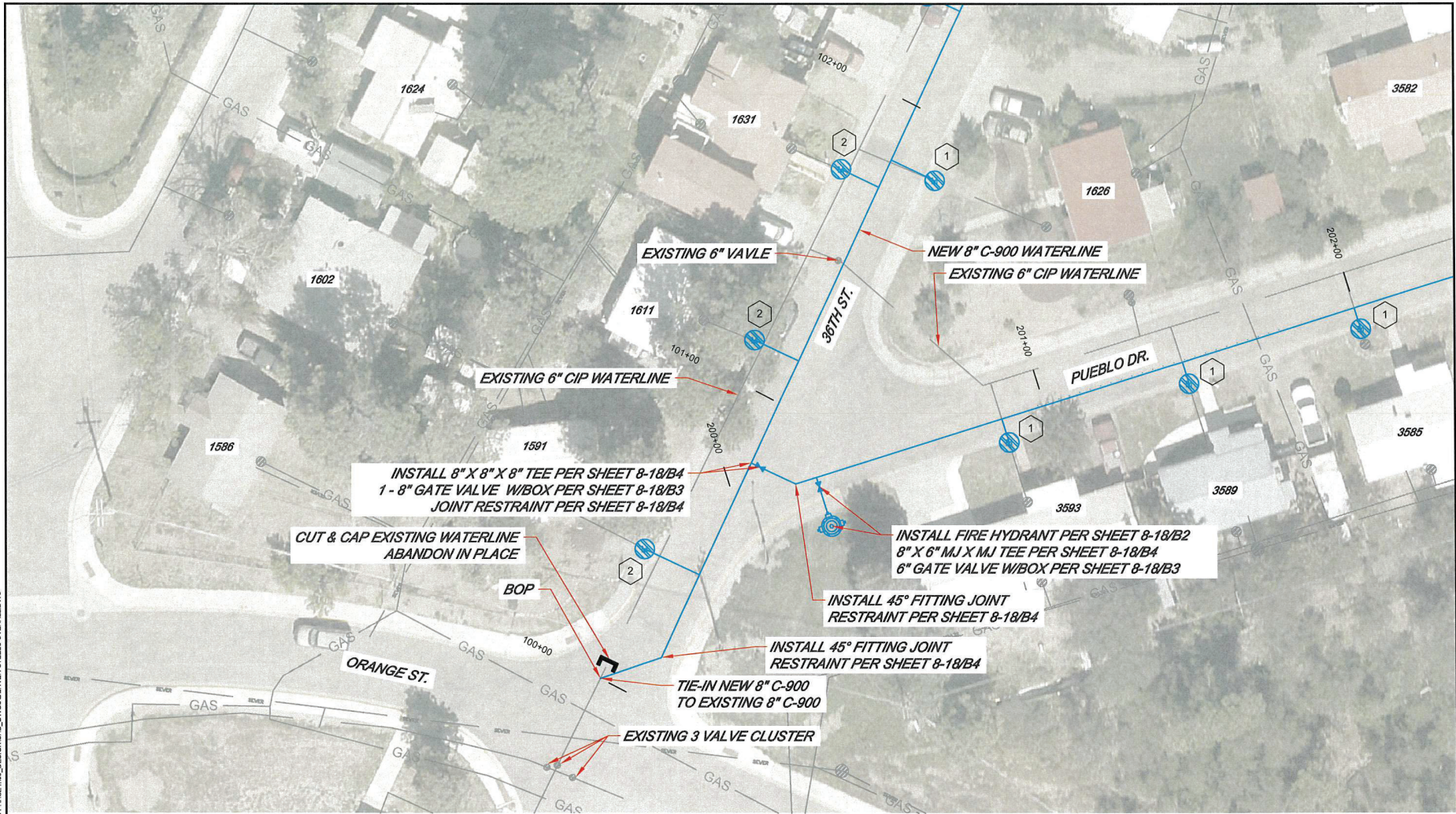
LOS ALAMOS

INCORPORATED COUNTY  
OF LOS ALAMOS  
DEPARTMENT OF PUBLIC  
UTILITIES  
1000 CENTRAL AVENUE, SUITE 130  
LOS ALAMOS, NEW MEXICO 87544  
(505) 662-4333 FAX: (505) 662-5005

SHEET  
8-2



Drawing File: L:\PROJECTS\1908 2024-11 DENVER STEELS PHASE II\03 DESIGN\03\_DWG\DENVER STEELS OVERALL.DWG



- 1 CONNECT EXISTING SERVICE LINE TO NEW SINGLE METER CAN  
PER DETAIL SHEET 8-16. SEE DETAIL A.
- 2 CONNECT EXISTING SERVICE LINE TO NEW SINGLE METER CAN  
PER DETAIL SHEET 8-16. SEE DETAIL B.

Water Utility Design Plan

Attachment A



REVISION DESCRIPTION	
NO.	
1	
2	
3	
4	
5	

DESIGNED BY:	J.A.M.
DRAWN BY:	L.A.M.
APPROVED BY:	J.A.M.
DATE:	07/08/2025
SCALE:	1:30

IFB 26-18 DENVER STEELS PHASE II PROJECT	36TH ST. STA.: 100+00 to 102+00
---	---------------------------------



INCORPORATED COUNTY  
OF LOS ALAMOS  
DEPARTMENT OF PUBLIC UTILITIES  
1000 CENTRAL AVE., SUITE 130  
LOS ALAMOS, NEW MEXICO 87544  
(505) 662-8333

SHEET  
8-3



Drawing File: L:\PROJECTS\IFB 2018-18 DENVER STEELS PHASE II\DESIGN\CAD\_DWG\DENVER STEELS OVERALL.DWG



- 1 CONNECT EXISTING SERVICE LINE TO NEW SINGLE METER CAN  
PER DETAIL SHEET 8-16. SEE DETAIL A.
- 2 CONNECT EXISTING SERVICE LINE TO NEW SINGLE METER CAN  
PER DETAIL SHEET 8-16. SEE DETAIL B.

Water Utility Design Plan

Attachment A



REVISION DESCRIPTION	
NO.	
1	
2	
3	
4	
5	

DESIGNED BY:	J.A.M.
DRAWN BY:	L.A.M.
APPROVED BY:	J.A.M.
DATE:	07/08/2025
SCALE:	1"=30'

IFB 26-18 DENVER STEELS  
PHASE II PROJECT  
36TH ST. STA.: 102+00 to 104+00

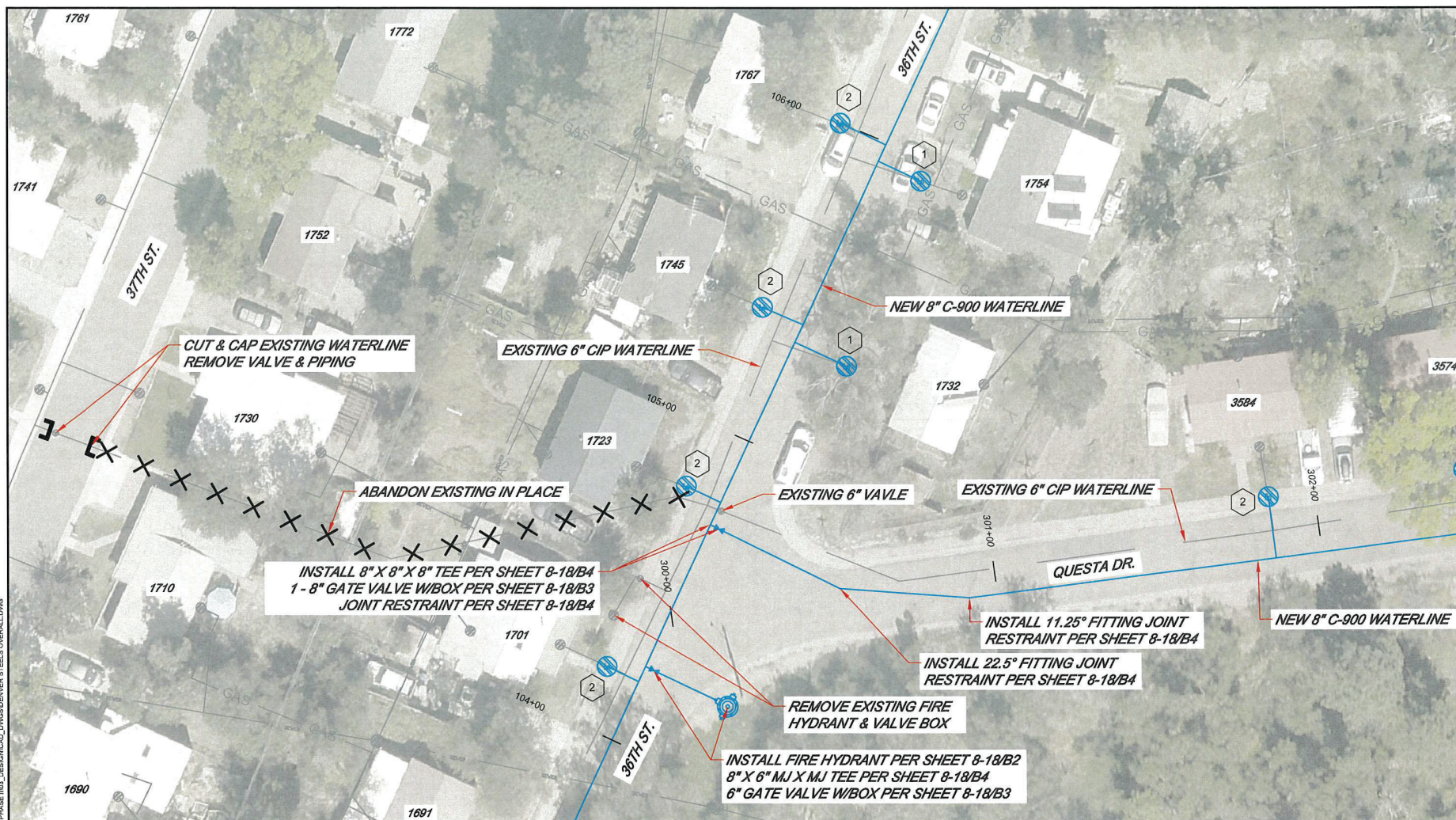


INCORPORATED COUNTY  
OF LOS ALAMOS  
DEPARTMENT OF PUBLIC UTILITIES  
1000 CENTRAL AVE., SUITE 130  
LOS ALAMOS, NEW MEXICO 87544  
(505) 662-8333

SHEET  
8-4



Drawing File: L:\PROJECTS\2024-18 DENVER STEELS PHASE II\DESIGN\DWG\_18-DENVER STEELS OVERALL.DWG



- 1 CONNECT EXISTING SERVICE LINE TO NEW SINGLE METER CAN PER DETAIL SHEET 8-16. SEE DETAIL A.
- 2 CONNECT EXISTING SERVICE LINE TO NEW SINGLE METER CAN PER DETAIL SHEET 8-16. SEE DETAIL B.

Water Utility Design Plan

Attachment A



REVISION DESCRIPTION	
NO.	
1	
2	
3	
4	
5	
6	

DESIGNED BY:	J.A.M.
DRAWN BY:	J.A.M.
APPROVED BY:	J.A.M.
DATE:	07/08/2025
SCALE:	1"=30'

IFB 26-18 DENVER STEELS PHASE II PROJECT
36TH ST. STA. 104+00 TO 106+00 37TH/36TH ST.: CUT & CAP EXISTING WATER MAIN BETWEEN STREETS

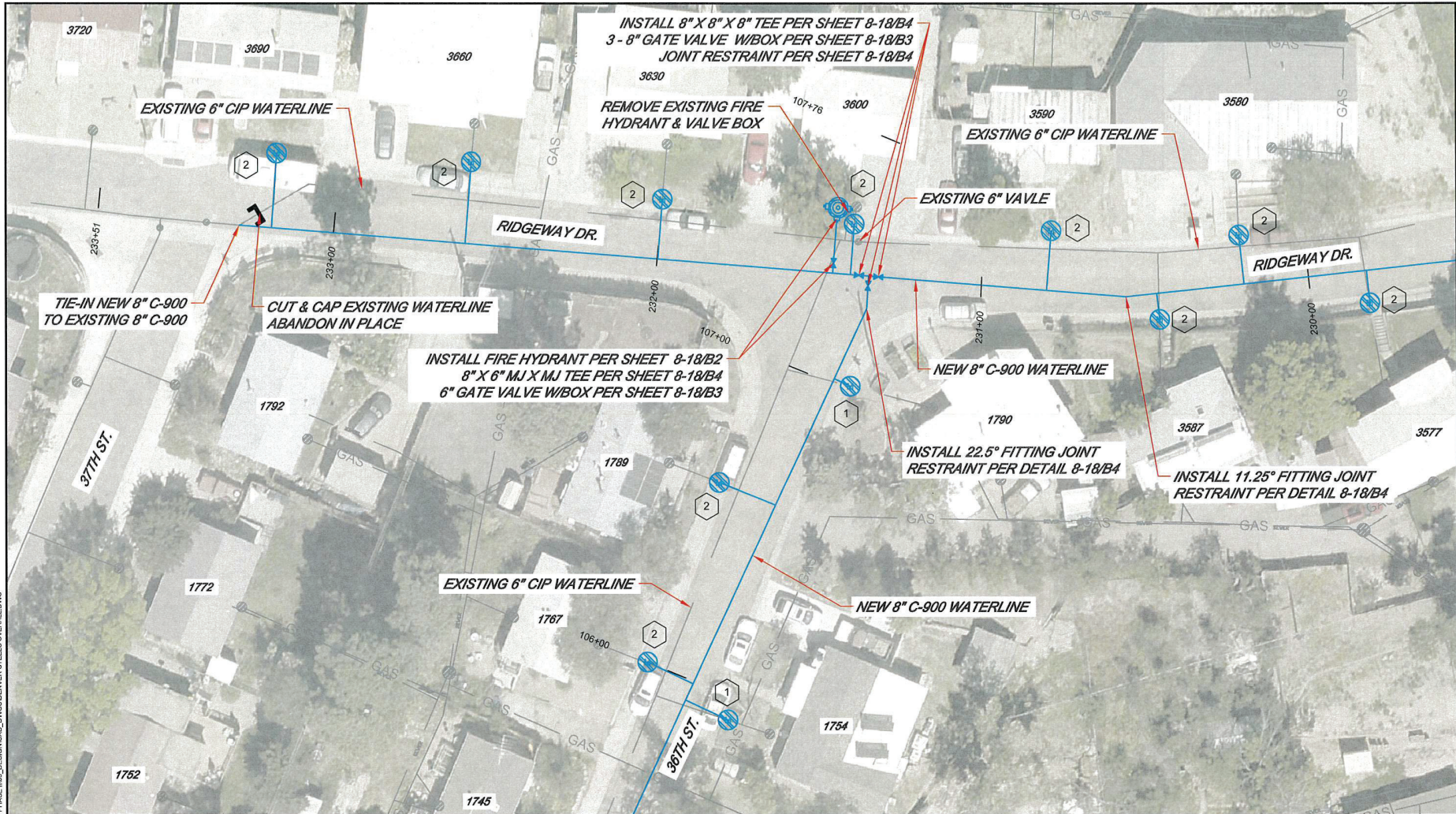


INCORPORATED COUNTY OF LOS ALAMOS
DEPARTMENT OF PUBLIC UTILITIES 1000 CENTRAL AVE., SUITE 130 LOS ALAMOS, NEW MEXICO 87544 (505) 662-8333

SHEET 8-5
--------------



Drawing File: L:\PROJECTS\9818 2026-18 DENVER STEELS PHASE II\DWG\DENVER STEELS OVERALL.DWG



- 1 CONNECT EXISTING SERVICE LINE TO NEW SINGLE METER CAN  
PER DETAIL SHEET 8-16. SEE DETAIL A.
- 2 CONNECT EXISTING SERVICE LINE TO NEW SINGLE METER CAN  
PER DETAIL SHEET 8-16. SEE DETAIL B.

Water Utility Design Plan

Attachment A



REVISION DESCRIPTION	
NO.	
1	
2	
3	
4	
5	
6	

DESIGNED BY:	J.A.M.
DRAWN BY:	L.A.M.
APPROVED BY:	J.A.M.
DATE:	07/08/2025
SCALE:	1:30

IFB 26-18 DENVER STEELS PHASE II PROJECT
36TH ST.: STA. 106+00 TO 107+76 RIDGEWAY DR.: STA. 233+51+00 TO 230+00

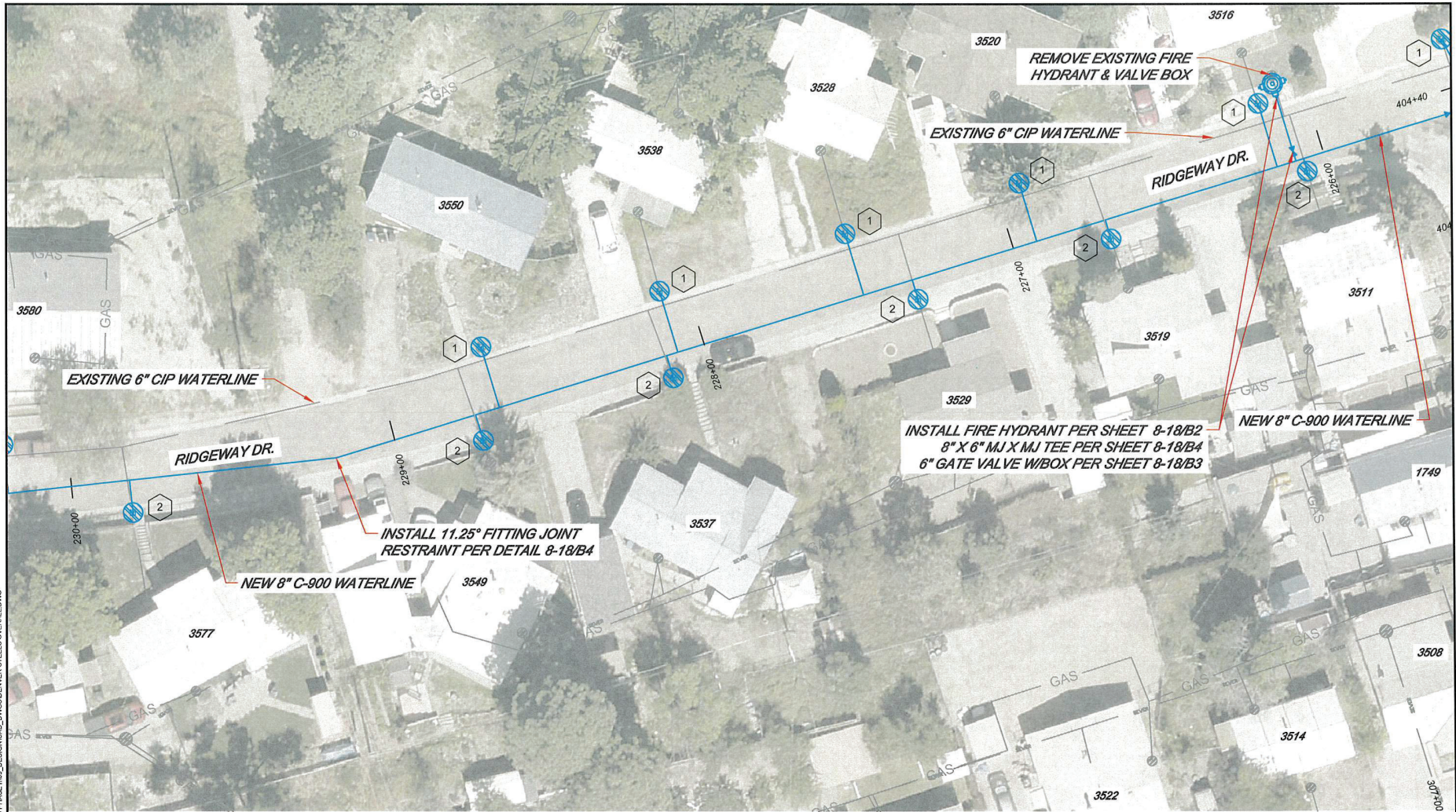


INCORPORATED COUNTY OF LOS ALAMOS
DEPARTMENT OF PUBLIC UTILITIES 1000 CENTRAL AVE., SUITE 130 LOS ALAMOS, NEW MEXICO 87544 (505) 662-8333

SHEET 8-6
--------------



Drawing File: L:\PROJECTS\2026-18 DENVER STEELS PHASE II\DESIGN\DWG\2026-18 DENVER STEELS OVERALL.DWG



- 1 CONNECT EXISTING SERVICE LINE TO NEW SINGLE METER CAN  
PER DETAIL SHEET 8-16. SEE DETAIL A.
- 2 CONNECT EXISTING SERVICE LINE TO NEW SINGLE METER CAN  
PER DETAIL SHEET 8-16. SEE DETAIL B.

Water Utility Design Plan

Attachment A



REVISION DESCRIPTION	
NO.	
1	
2	
3	
4	
5	

DESIGNED BY:	J.A.M.
DRAWN BY:	J.A.M.
APPROVED BY:	J.A.M.
DATE:	07/08/2025
SCALE:	1:30

IFB 26-18 DENVER STEELS PHASE II PROJECT
RIDGWAY DR., STA. 230+00 TO 226+00

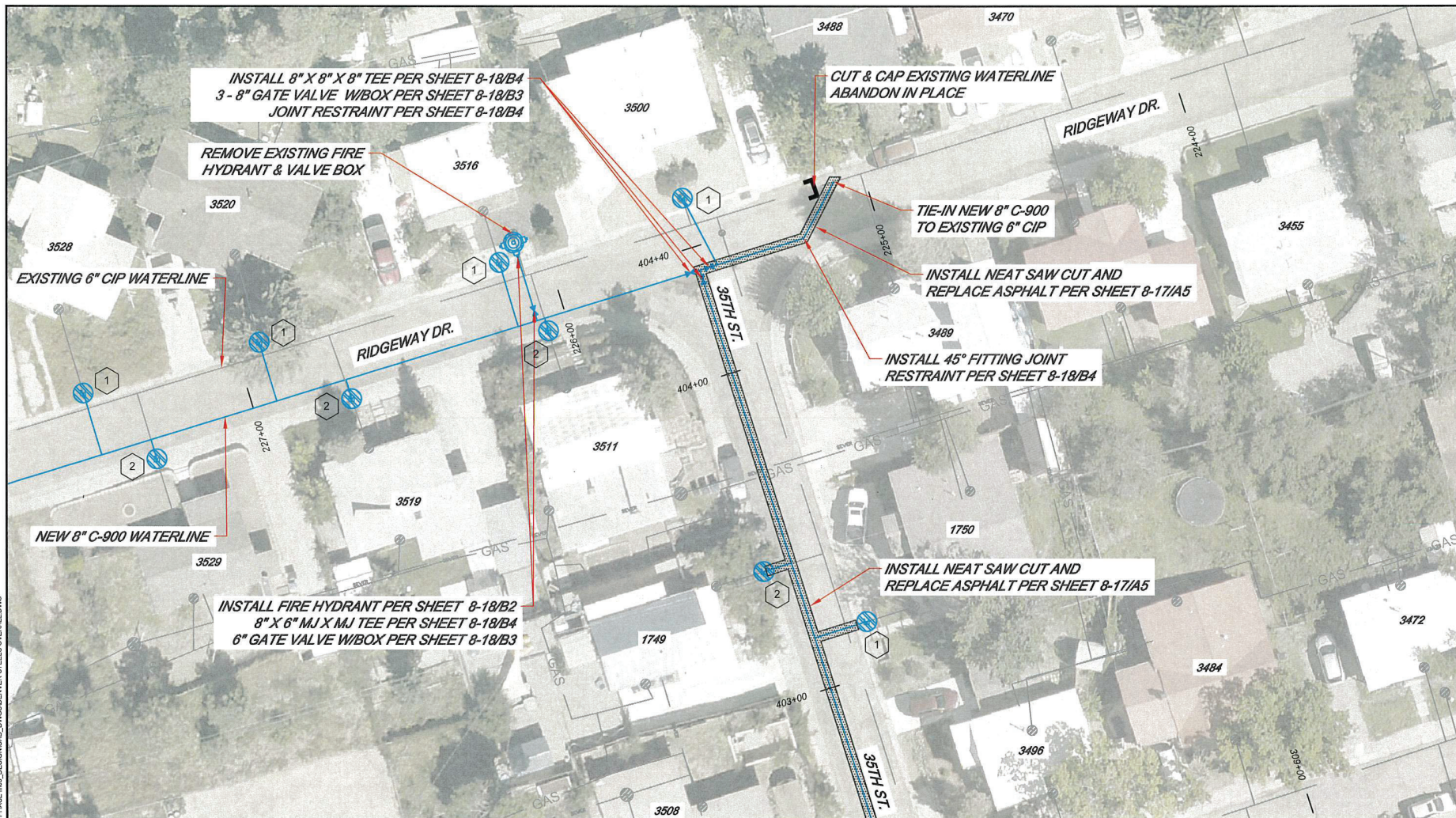


INCORPORATED COUNTY  
OF LOS ALAMOS  
DEPARTMENT OF PUBLIC UTILITIES  
1000 CENTRAL AVE., SUITE 130  
LOS ALAMOS, NEW MEXICO 87544  
(505) 662-9333

SHEET  
8-7



Drawing File: L:\PROJECTS\2025-18 DENVER STEELS PHASE II\DESIGN\DWG\_01\DESIGN\DWG\_01.DWG



- 1 CONNECT EXISTING SERVICE LINE TO NEW SINGLE METER CAN  
PER DETAIL SHEET 8-16. SEE DETAIL A.
- 2 CONNECT EXISTING SERVICE LINE TO NEW SINGLE METER CAN  
PER DETAIL SHEET 8-16. SEE DETAIL B.

Water Utility Design Plan

Attachment A



REVISION DESCRIPTION	
NO.	
1	
2	
3	
4	
5	
6	

DESIGNED BY:	J.A.M.
DRAWN BY:	J.A.M.
APPROVED BY:	J.A.M.
DATE:	07/08/2025
SCALE:	1"=30'

IFB 26-18 DENVER STEELS PHASE II PROJECT
RIDGEWAY DR.: STA. 227+00 TO 225+00 35TH ST.: STA. 404+40 TO 403+00

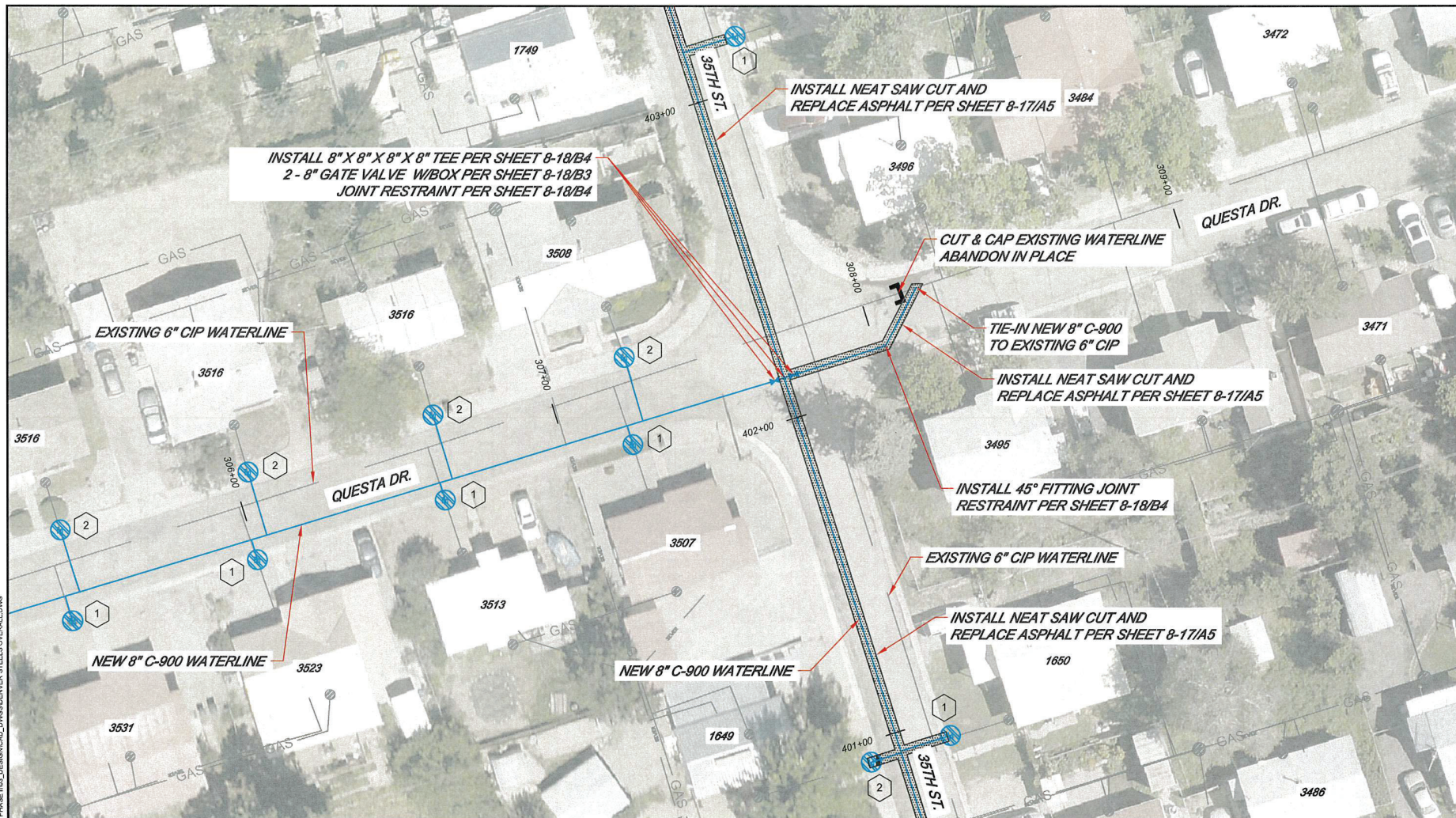


INCORPORATED COUNTY OF LOS ALAMOS
DEPARTMENT OF PUBLIC UTILITIES 1000 CENTRAL AVE., SUITE 130 LOS ALAMOS, NEW MEXICO 87544 (505) 662-8333

SHEET 8-8
--------------



Drawing File: L:\PROJECTS\918-18 DENVER STEELS PHASE II\918-18 DENVER STEELS PHASE II\DWG



- 1 CONNECT EXISTING SERVICE LINE TO NEW SINGLE METER CAN  
PER DETAIL SHEET 8-16. SEE DETAIL A.
- 2 CONNECT EXISTING SERVICE LINE TO NEW SINGLE METER CAN  
PER DETAIL SHEET 8-16. SEE DETAIL B.

Water Utility Design Plan

Attachment A



REVISION DESCRIPTION	
NO.	
1	
2	
3	
4	
5	

DESIGNED BY:	J.A.M.
DRAWN BY:	J.A.M.
APPROVED BY:	J.A.M.
DATE:	07/08/2025
SCALE:	1"=30'

IFB 26-18 DENVER STEELS PHASE II PROJECT	35TH ST. STATION 403+00 TO 401+00
---	-----------------------------------

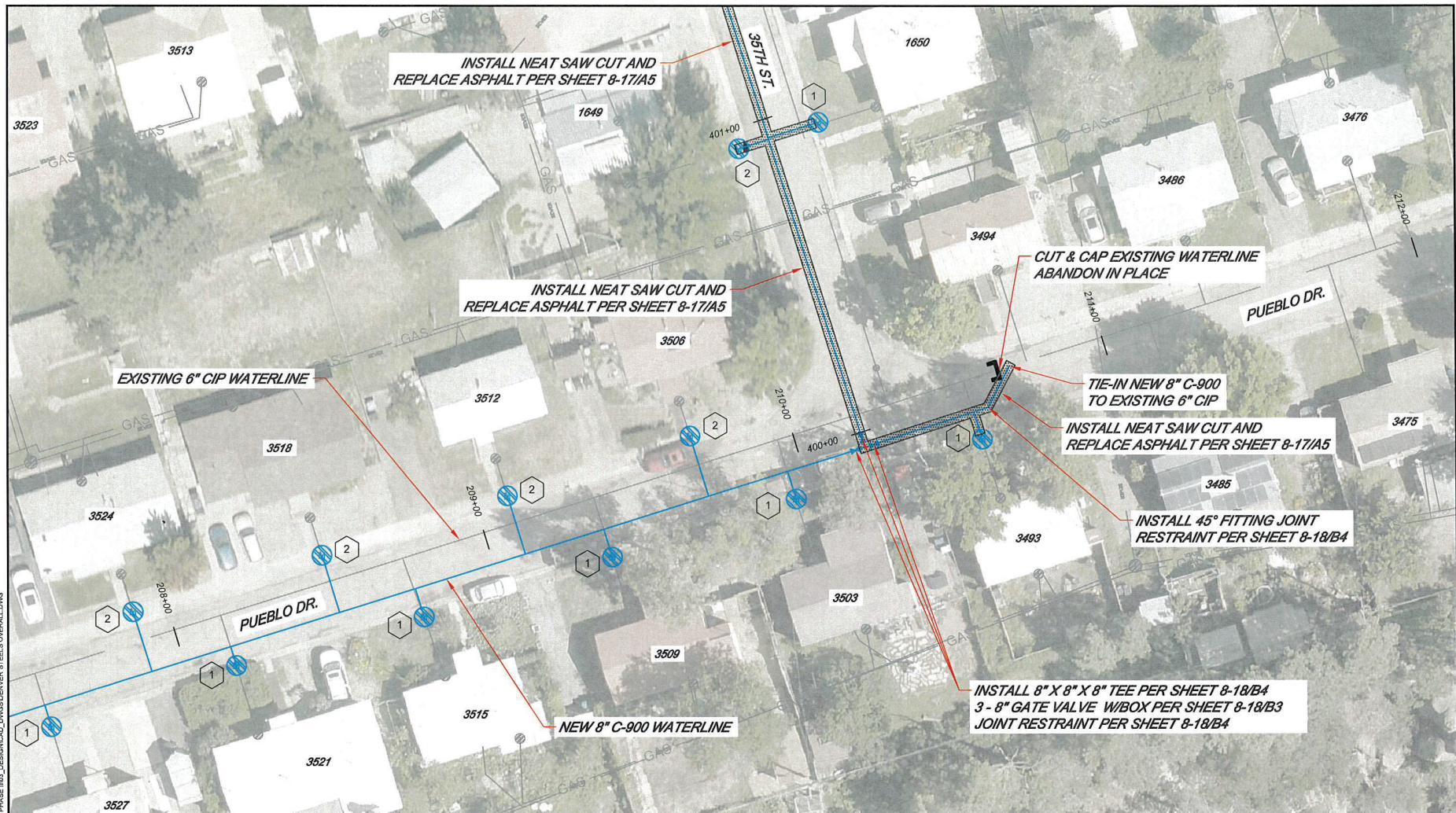


INCORPORATED COUNTY  
OF LOS ALAMOS  
DEPARTMENT OF PUBLIC UTILITIES  
1000 CENTRAL AVE., SUITE 130  
LOS ALAMOS, NEW MEXICO 87544  
(505) 662-4333

SHEET  
8-9



Drawing File: L:\PROJECTS\2025-18 DENVER STEELS PHASE II\DESIGN\DWG\2025-18 DENVER STEELS OVERALL.DWG



- 1 CONNECT EXISTING SERVICE LINE TO NEW SINGLE METER CAN  
PER DETAIL SHEET 8-16. SEE DETAIL A.
- 2 CONNECT EXISTING SERVICE LINE TO NEW SINGLE METER CAN  
PER DETAIL SHEET 8-16. SEE DETAIL B.

Water Utility Design Plan

Attachment A



REVISION DESCRIPTION	
NO.	
1	
2	
3	
4	
5	

DESIGNED BY:	J.A.M.
DRAWN BY:	J.A.M.
APPROVED BY:	J.A.M.
DATE:	07/08/2025
SCALE:	1"=30'

IFB 26-18 DENVER STEELS PHASE II PROJECT
35TH ST.: STA. 401+00 TO 400+00 PUEBLO DR.: STA. 211+00 - 208+00

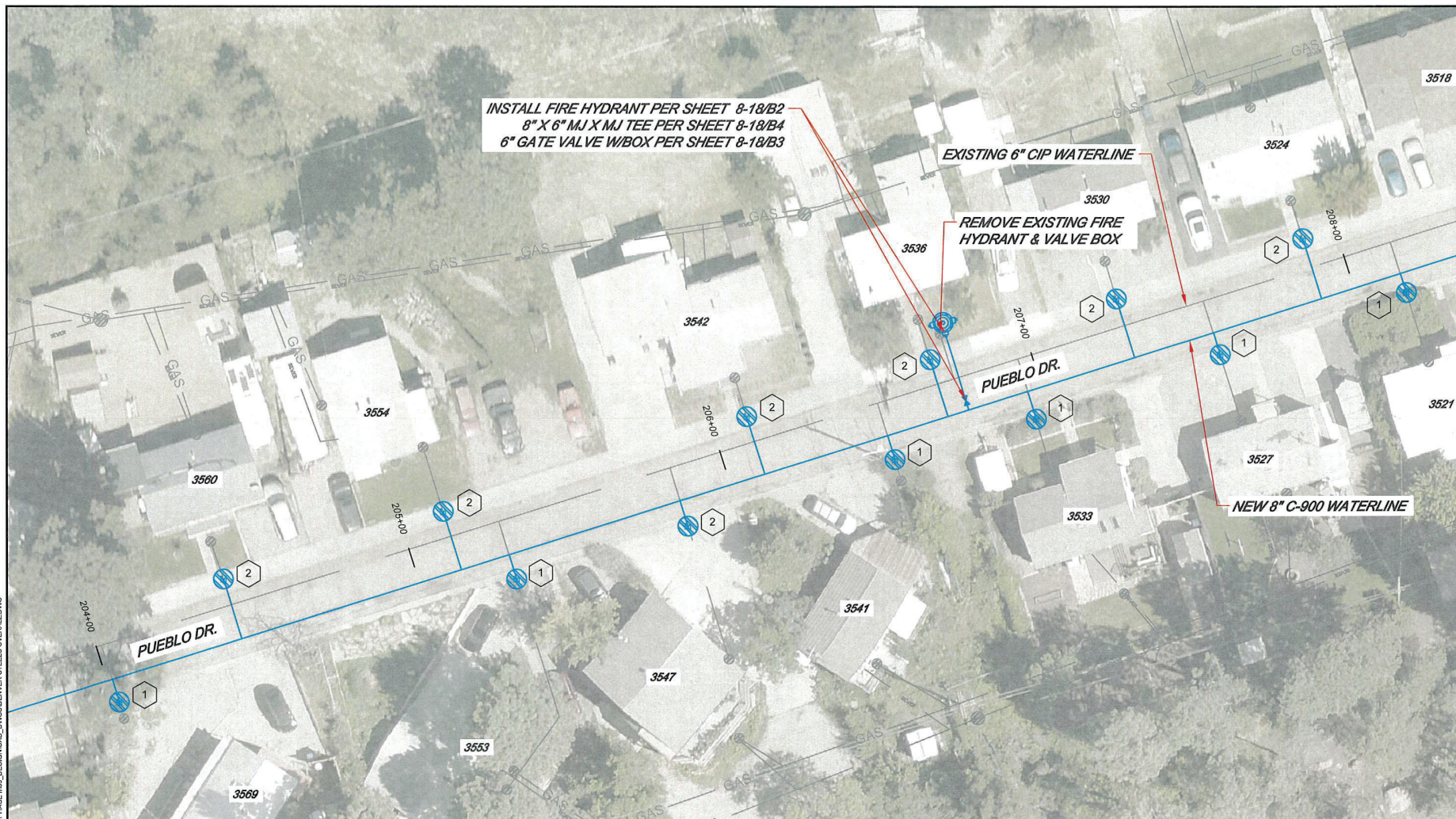


INCORPORATED COUNTY OF LOS ALAMOS
DEPARTMENT OF PUBLIC UTILITIES 1000 CENTRAL AVE., SUITE 130 LOS ALAMOS, NEW MEXICO 87544 (505) 662-8333

SHEET 8-10
---------------



Drawing File: L:\PROJECTS\2024-1 DENVER STEELS PHASE II\DESIGN\CD\DWG\DENVER STEELS OVERALL.DWG



- 1 CONNECT EXISTING SERVICE LINE TO NEW SINGLE METER CAN  
PER DETAIL SHEET 8-16. SEE DETAIL A.
- 2 CONNECT EXISTING SERVICE LINE TO NEW SINGLE METER CAN  
PER DETAIL SHEET 8-16. SEE DETAIL B.

Water Utility Design Plan

Attachment A



INCORPORATED COUNTY  
OF LOS ALAMOS  
DEPARTMENT OF PUBLIC UTILITIES  
1000 CENTRAL AVE., SUITE 130  
LOS ALAMOS, NEW MEXICO 87544  
(505) 662-8333



IFB 26-18 DENVER STEELS  
PHASE II PROJECT  
PUEBLO DR.: STA. 208+00 to 204+00

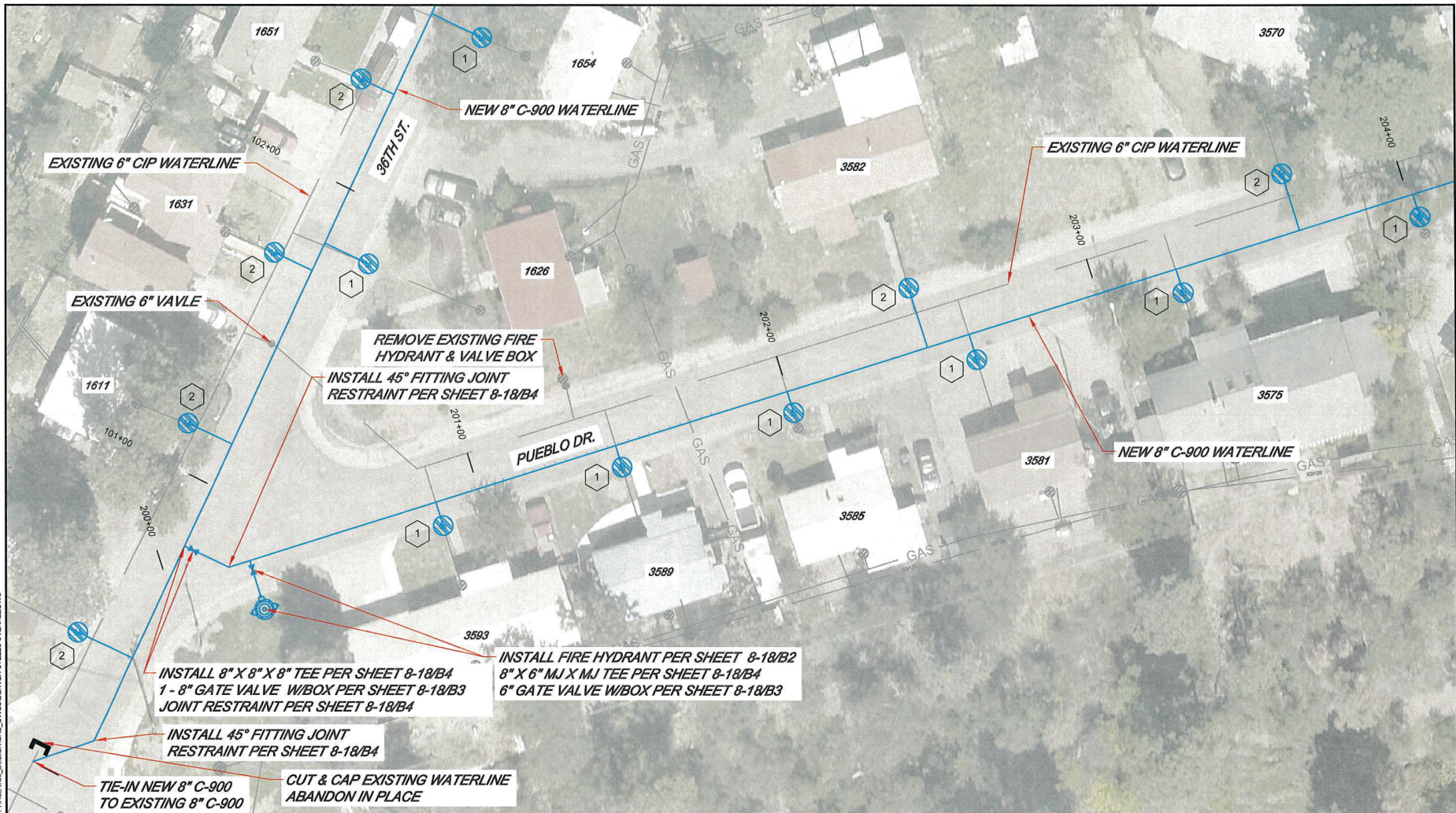
DESIGNED BY: J.A.M.  
DRAWN BY: J.A.M.  
APPROVED BY: J.A.M.  
DATE: 07/08/2025  
SCALE: 1"=30'

NO.	REVISION DESCRIPTION
1	
2	
3	
4	
5	
6	

SHEET  
8-11



DRAWING FILE: L:\PROJECTS\2024-18 DENVER STEELS PHASE II\DESIGN\DWG\_01\2024-18 DENVER STEELS PHASE II OVERALL.DWG



- 1 CONNECT EXISTING SERVICE LINE TO NEW SINGLE METER CAN PER DETAIL SHEET 8-16. SEE DETAIL A.
- 2 CONNECT EXISTING SERVICE LINE TO NEW SINGLE METER CAN PER DETAIL SHEET 8-16. SEE DETAIL B.

Water Utility Design Plan

Attachment A



REVISION DESCRIPTION	
NO.	
1	
2	
3	
4	
5	

DESIGNED BY:	J.A.M.
DRAWN BY:	J.A.M.
APPROVED BY:	J.A.M.
DATE:	07/08/2025
SCALE:	1"=30'

IFB 26-18 DENVER STEELS PHASE II PROJECT
PUEBLO DR.: STA. 204+00 TO 200+00

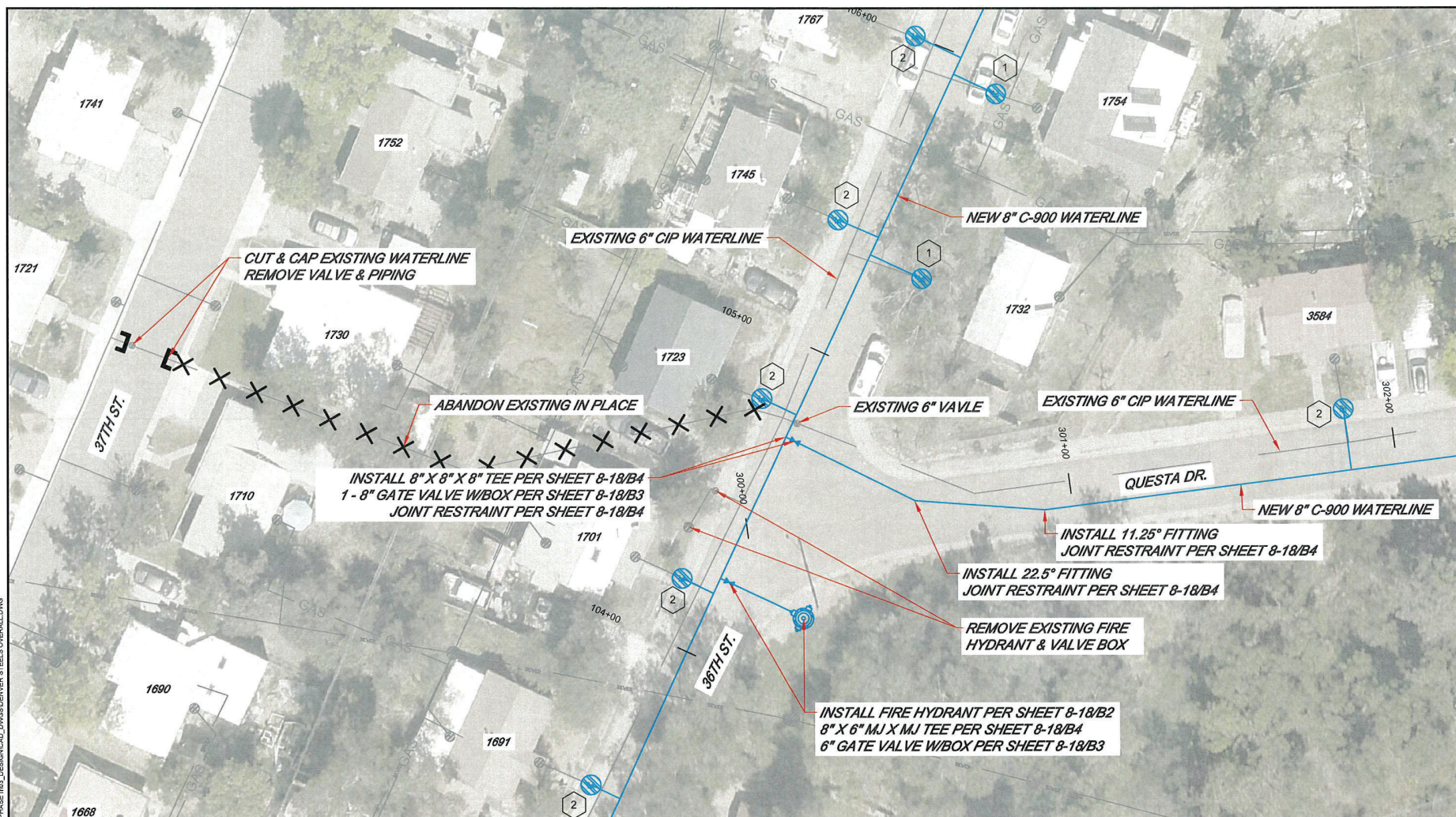


INCORPORATED COUNTY OF LOS ALAMOS
DEPARTMENT OF PUBLIC UTILITIES 1000 CENTRAL AVE., SUITE 130 LOS ALAMOS, NEW MEXICO 87544 (505) 662-8333

SHEET 8-12
---------------



Drawing File: L:\PROJECTS\IFB 26-18 DENVER STEELS PHASE II\DESIGN\DWG\DENVER STEELS OVERALL.DWG



- 1 CONNECT EXISTING SERVICE LINE TO NEW SINGLE METER CAN  
PER DETAIL SHEET 8-16. SEE DETAIL A.
- 2 CONNECT EXISTING SERVICE LINE TO NEW SINGLE METER CAN  
PER DETAIL SHEET 8-16. SEE DETAIL B.

Water Utility Design Plan

Attachment A



REVISION DESCRIPTION	
NO.	
1	
2	
3	
4	
5	

DESIGNED BY:	J.A.M.
DRAWN BY:	L.A.M.
APPROVED BY:	J.A.M.
DATE:	07/08/2025
SCALE:	1:30

IFB 26-18 DENVER STEELS PHASE II PROJECT
QUESTA DR.: STA. 300+00 TO 302+00 37TH/36TH ST.: CUT & CAP EXISTING WATER MAIN BETWEEN STREETS

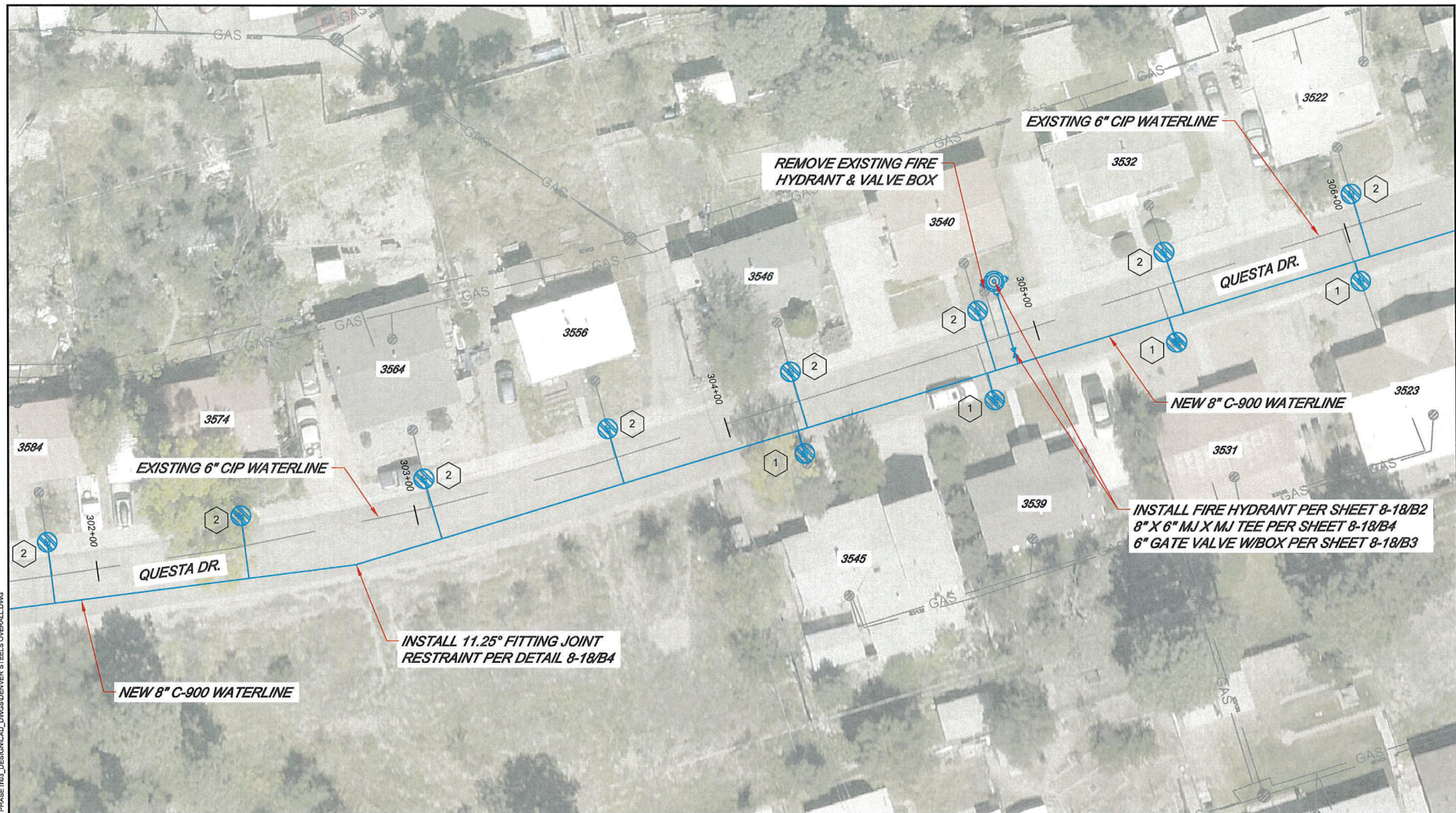


INCORPORATED COUNTY OF LOS ALAMOS
DEPARTMENT OF PUBLIC UTILITIES 1000 CENTRAL AVE., SUITE 130 LOS ALAMOS, NEW MEXICO 87544 (505) 662-8333

SHEET 8-13
---------------



Drawing File: L:\PROJECTS\IFB 2025-18 DENVER STEELS PHASE II\DESIGN\DWG\_DWG\DENVER STEELS OVERALL.DWG



- 1 CONNECT EXISTING SERVICE LINE TO NEW SINGLE METER CAN PER DETAIL SHEET 8-16. SEE DETAIL A.
- 2 CONNECT EXISTING SERVICE LINE TO NEW SINGLE METER CAN PER DETAIL SHEET 8-16. SEE DETAIL B.

Water Utility Design Plan

Attachment A



REVISION DESCRIPTION	
NO.	
1	
2	
3	
4	
5	

DESIGNED BY:	J.A.M.
DRAWN BY:	J.A.M.
APPROVED BY:	J.A.M.
DATE:	07/08/2025
SCALE:	1"=30'

IFB 26-18 DENVER STEELS  
PHASE II PROJECT  
QUESTA DR.: STA. 302+00 TO 306+00

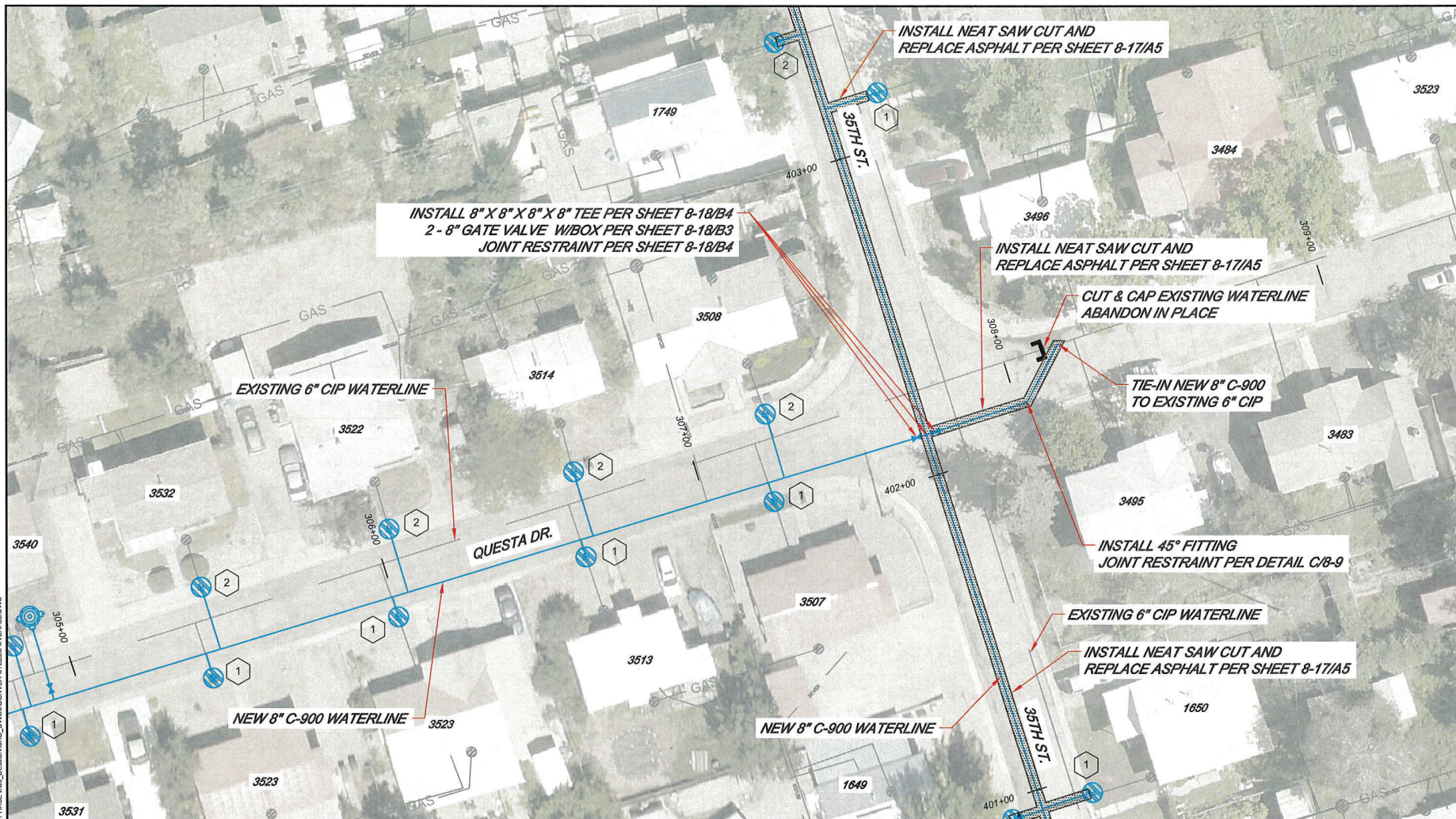


INCORPORATED COUNTY  
OF LOS ALAMOS  
DEPARTMENT OF PUBLIC UTILITIES  
1000 CENTRAL AVE., SUITE 1130  
LOS ALAMOS, NEW MEXICO 87544  
(505) 662-4333

SHEET  
8-14



Drawing Title: L:\PROJECTS\2025-18 DENVER STEELS PHASE II\2025-18 DENVER STEELS PHASE II\DWG\WATER UTILITY DESIGN PLAN



- 1 CONNECT EXISTING SERVICE LINE TO NEW SINGLE METER CAN PER DETAIL SHEET 8-16. SEE DETAIL A.
- 2 CONNECT EXISTING SERVICE LINE TO NEW SINGLE METER CAN PER DETAIL SHEET 8-16. SEE DETAIL B.

Water Utility Design Plan

Attachment A



NO.	REVISION DESCRIPTION
1	
2	
3	
4	
5	

DESIGNED BY:	J.A.M.
DRAWN BY:	J.A.M.
APPROVED BY:	J.A.M.
DATE:	07/08/2025
SCALE:	1"=30'

IFB 26-18 DENVER STEELS  
PHASE II PROJECT  
QUESTA DR.: STA. 305+00 TO 309+00



INCORPORATED COUNTY  
OF LOS ALAMOS  
DEPARTMENT OF PUBLIC UTILITIES  
1000 CENTRAL AVE., SUITE 130  
LOS ALAMOS, NEW MEXICO 87544  
(505) 662-4333

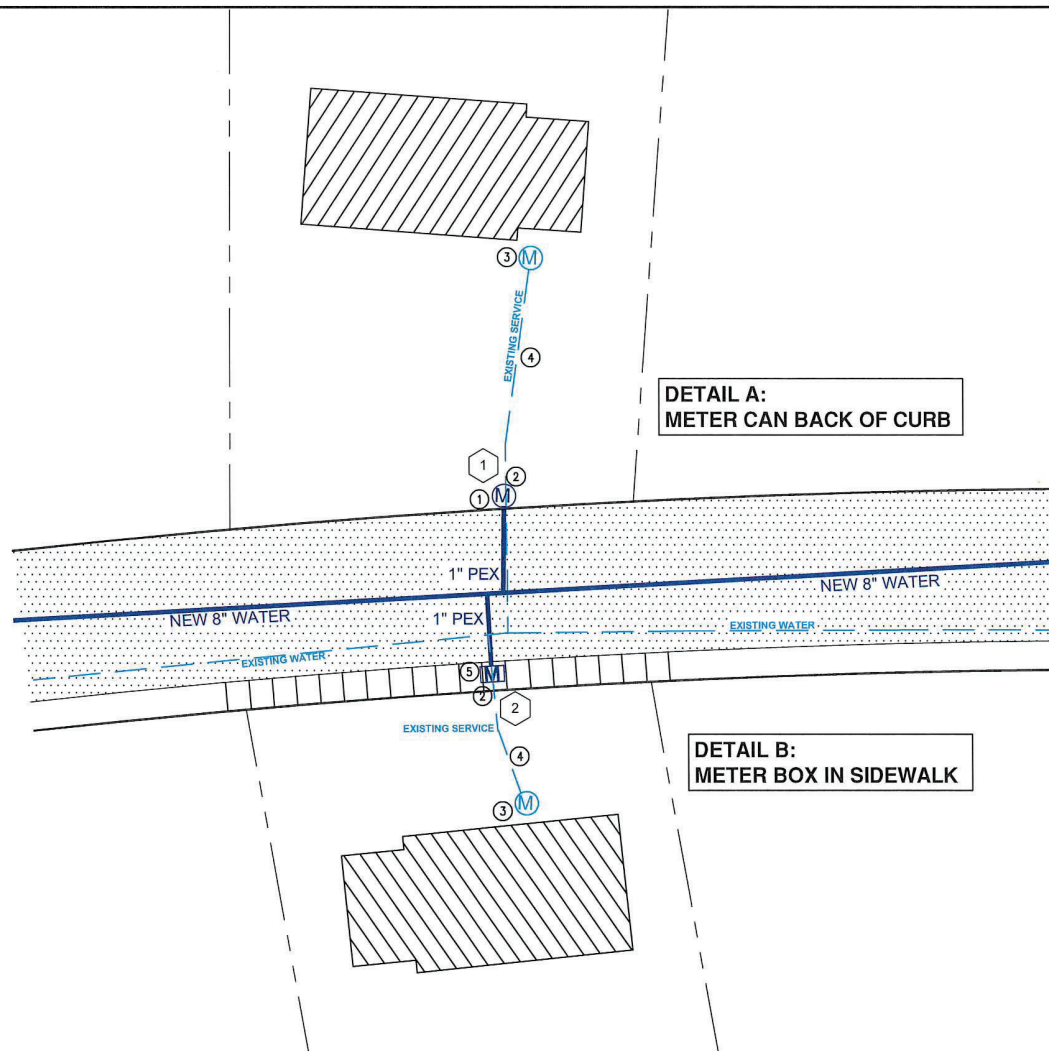
SHEET  
8-15



Drawing File: L:\PROJECTS\IFB 26-18 DENVER STEELS PHASE II\DESIGN\DWG\_26-18 DENVER STEELS OVERALL.DWG

# Water Utility Design Plan

- 1 CONNECT EXISTING SERVICE LINE TO NEW SINGLE METER CAN PER DETAIL SHEET 8-16. SEE DETAIL A.
- 2 CONNECT EXISTING SERVICE LINE TO NEW SINGLE METER CAN PER DETAIL SHEET 8-16. SEE DETAIL B.



DETAIL A:  
METER CAN BACK OF CURB

DETAIL B:  
METER BOX IN SIDEWALK

## KEYED NOTES:

- 1 INSTALL NEW SINGLE WATER SERVICE PER SHEET 8-17/A3. CONSTRUCTION STANDARD DETAIL 6001.
- 2 TIE NEW SERVICE LINE TO EXISTING SERVICE LINE.
- 3 REMOVE EXISTING WATER CAN. ONCE METER IS REMOVED, REMOVE METER SETTER AND INSTALL NEW PIPE, SAME SIZE AS EXISTING, IN PLACE OF METER SETTER. BED PIPE AND BACKFILL TO 95% COMPACTION. RESTORE AREA TO MATCH EXISTING.
- 4 EXISTING WATER SERVICE LINE TO REMAIN IN SERVICE.
- 5 INSTALL NEW SINGLE WATER SERVICE PER SHEET 8-17/A4. CONSTRUCTION STANDARD DETAIL 6007. TRAFFIC RATED DRIVE OVER METER BOX/LID IN SIDEWALK.

## GENERAL NOTES:

- A CONTRACTOR SHALL COORDINATE OUTAGES 48 HOURS MINIMUM BEFORE CUSTOMER'S SERVICE IS CUT OVER TO NEW SYSTEM.
- B CUT & CAP ALL EXISTING WATER MAINS AND ABANDON IN PLACE.
- C COUPLINGS SHALL BE LEAD FREE BRASS COMPRESSION TYPE.
- D ALL NEW SERVICE LINE SHALL BE 1" PEX PIPE BURIED WITH 36" MINIMUM COVER.



REVISION DESCRIPTION	
NO.	
1	
2	
3	
4	
5	

DESIGNED BY:	J.A.M.
DRAWN BY:	J.A.M.
APPROVED BY:	J.A.M.
DATE:	07/08/2025
SCALE:	N/A

IFB 26-18 DENVER STEELS  
PHASE II PROJECT  
DETAIL SHEET



INCORPORATED COUNTY  
OF LOS ALAMOS  
DEPARTMENT OF PUBLIC  
UTILITIES  
1000 CENTRAL AVE., SUITE 130  
LOS ALAMOS, NEW MEXICO 87544  
(505) 862-8333 FAX: (505) 862-8005

SHEET  
8-16

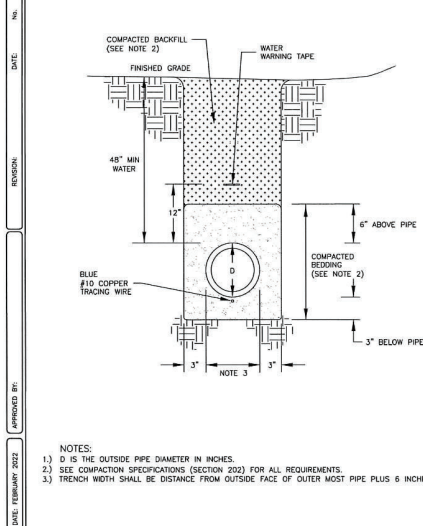


SHEET  
8-17



**LOS ALAMOS**  
Department of Public Utilities  
Electric, Gas, Water, and Wastewater Services

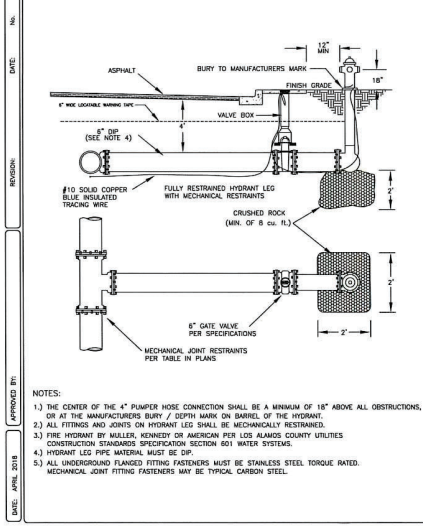
UTILITY CONSTRUCTION STANDARDS - WATER  
**WATER MAIN TRENCH DETAIL**  
SECTION 6000  
6009



B1

**LOS ALAMOS**  
Department of Public Utilities  
Electric, Gas, Water, and Wastewater Services

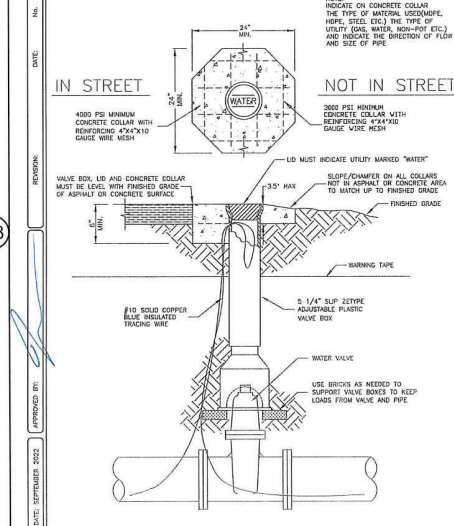
UTILITY CONSTRUCTION STANDARDS - WATER  
**FIRE HYDRANT DETAIL**  
SECTION 6000  
6011



B2

**LOS ALAMOS**  
Department of Public Utilities  
Electric, Gas, Water, and Wastewater Services

UTILITY CONSTRUCTION STANDARDS - WATER  
**WATER VALVE BOX**  
SECTION 6000  
6013



B3

**LOS ALAMOS**  
Department of Public Utilities  
Electric, Gas, Water, and Wastewater Services

UTILITY CONSTRUCTION STANDARDS - WATER  
**JOINT RESTRAINT FOR POLYETHYLENE WRAPPED DUCTILE IRON AND C-900 PVC**  
SECTION 6000  
6014

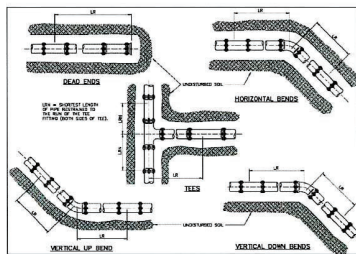
PVC Mechanical Joint Restraint Table

PIPE SIZE	BENDS				TEES				VERTICAL ORIFICES				DEAD ENDS & VALVES
	11/4	2	3	4	1/2	1	1 1/2	2	1/2	1	1 1/2	2	
4"	3	4	7	10	10	1	1	3	4	7	10	10	35
6"	3	4	10	15	20	7	1	21	3	11	1	3	55
8"	3	7	10	20	40	24	1	30	7	18	3	7	75
10"	4	8	10	30	60	37	1	35	8	17	4	8	85
12"	5	9	10	40	70	52	5	43	10	21	5	10	104

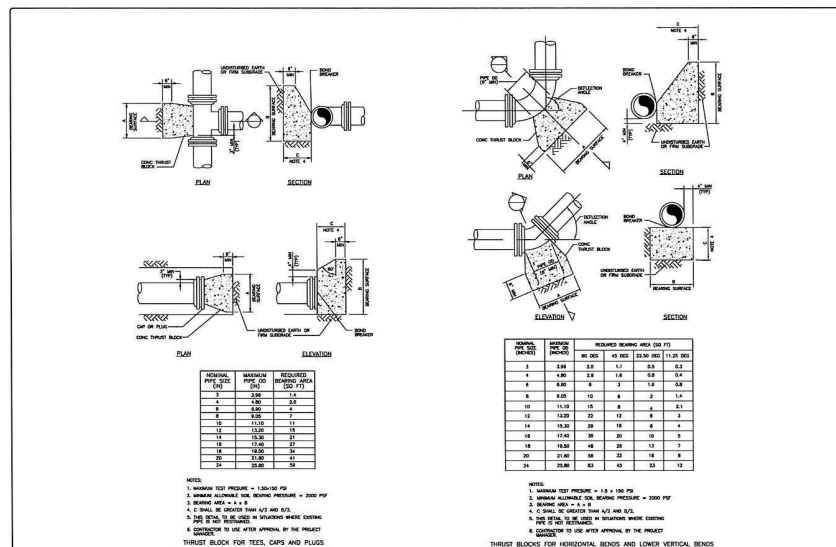
Ductile Iron/PolyWrap Mechanical Joint Restraint Table

PIPE SIZE	BENDS				TEES				VERTICAL ORIFICES				DEAD ENDS & VALVES
	11/4	2	3	4	1/2	1	1 1/2	2	1/2	1	1 1/2	2	
4"	3	4	5	10	22	1	1	3	4	5	10	10	35
6"	3	4	10	20	42	10	1	24	5	17	3	3	55
8"	4	8	10	30	74	27	1	34	8	22	4	4	75
10"	5	11	10	40	104	37	1	34	10	25	5	5	104
12"	6	11	20	50	118	40	20	34	12	27	5	5	125
14"	7	12	20	60	140	41	20	34	12	27	5	5	155
16"	7	12	20	60	160	43	20	34	12	27	5	5	200
18"	7	12	20	60	180	44	20	34	12	27	5	5	220

- Restraint lengths provided are in feet.
- 1/2 inch minimum standard length of each pipe without joints. fittings, etc. is stated in each direction along the run of the line.
- Restraint lengths compliant for pipe with 4" of cover from top of pipe.
- Manufactured cover of 180mm.
- All pipe joints and fittings within the restraint length specified in the table shall be restrained.



B4



DATE: APRIL 2018

APPROVED BY:

REVISION:

DATE: No.

UTILITY CONSTRUCTION STANDARDS - WATER  
**CONCRETE BLOCKING**  
SECTION 6000  
6015

B5

**LOS ALAMOS**  
Department of Public Utilities  
Electric, Gas, Water, and Wastewater Services



REVISION DESCRIPTION

NO.	DESCRIPTION
1	
2	
3	
4	
5	

DESIGNED BY: JAM  
DRAWN BY: JAM  
APPROVED BY: JAM  
DATE: 07/08/2025  
SCALE: N/A

IFB 26-18 DENVER STEELS  
PHASE II PROJECT  
CONSTRUCTION STANDARDS  
CONTINUED



INCORPORATED COUNTY  
OF LOS ALAMOS  
DEPARTMENT OF PUBLIC  
UTILITIES  
1000 CENTRAL SUITE 130  
LOS ALAMOS, NEW MEXICO 87544  
(505) 662-8333 FAX: (505) 662-5005

SHEET  
8-18