

Los Alamos County NM4 Crossing & Multi-Use Trail Improvements

February 6, 2025
Transportation Board



INTRODUCTIONS



LOS ALAMOS

Keith Wilson

Project Manager

Public Works Department

Bohannon  **Huston**

Jared Lee

Engineering Principal



LOS ALAMOS

Los Alamos County
NM4 Crossing & Multi-Use Trail Improvements

Attachment D - Page 2

Bohannon  **Huston**

PROJECT UPDATE



VICINITY MAP

Within the Project Area:

- NM4
- Piñon Park
- Piñon Elementary School





LOS ALAMOS

Bohannon  Huston

AGENDA

- HAWK Crossing Location Re-evaluation
- NM4 Westbound Lane Reduction Re-evaluation
- NM4 Northside Trail Location Re-evaluation
- Piñon Elementary School Trail Update
- Schedule
- Questions/Feedback



PEDESTRIAN HYBRID BEACON (HAWK) CROSSING LOCATION RE-EVALUATION

HAWK SIGNALS








Source: The Land

PEDESTRIANS

| SEE THIS | DO THIS |
|---|---|
|  | PUSH THE BUTTON |
|  | STOP & WAIT for the WALK signal. |
|  | START CROSSING Always watch for cars. |
|  | FINISH CROSSING |

DRIVERS

| SEE THIS | DO THIS |
|--|---|
|  | DRIVE Always look for people who plan to cross. |
|  | SLOW DOWN A person has activated the push button. |
|  | PREPARE TO STOP |
|  | STOP for pedestrian. (As with any signal RED means STOP) |
|  | STOP FIRST Proceed with caution if no people are present. |

Source: City of Phoenix, AZ



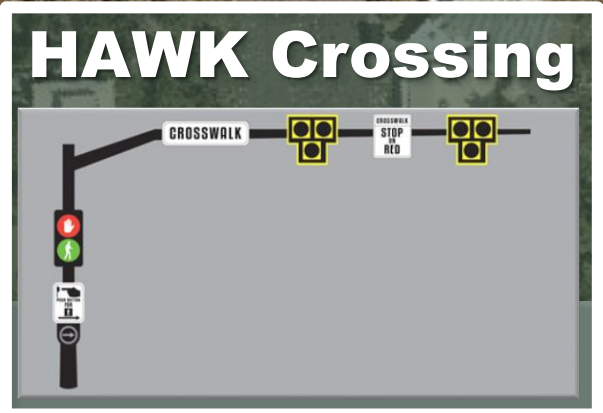
LOS ALAMOS

Los Alamos County
NM4 Crossing & Multi-Use Trail Improvements

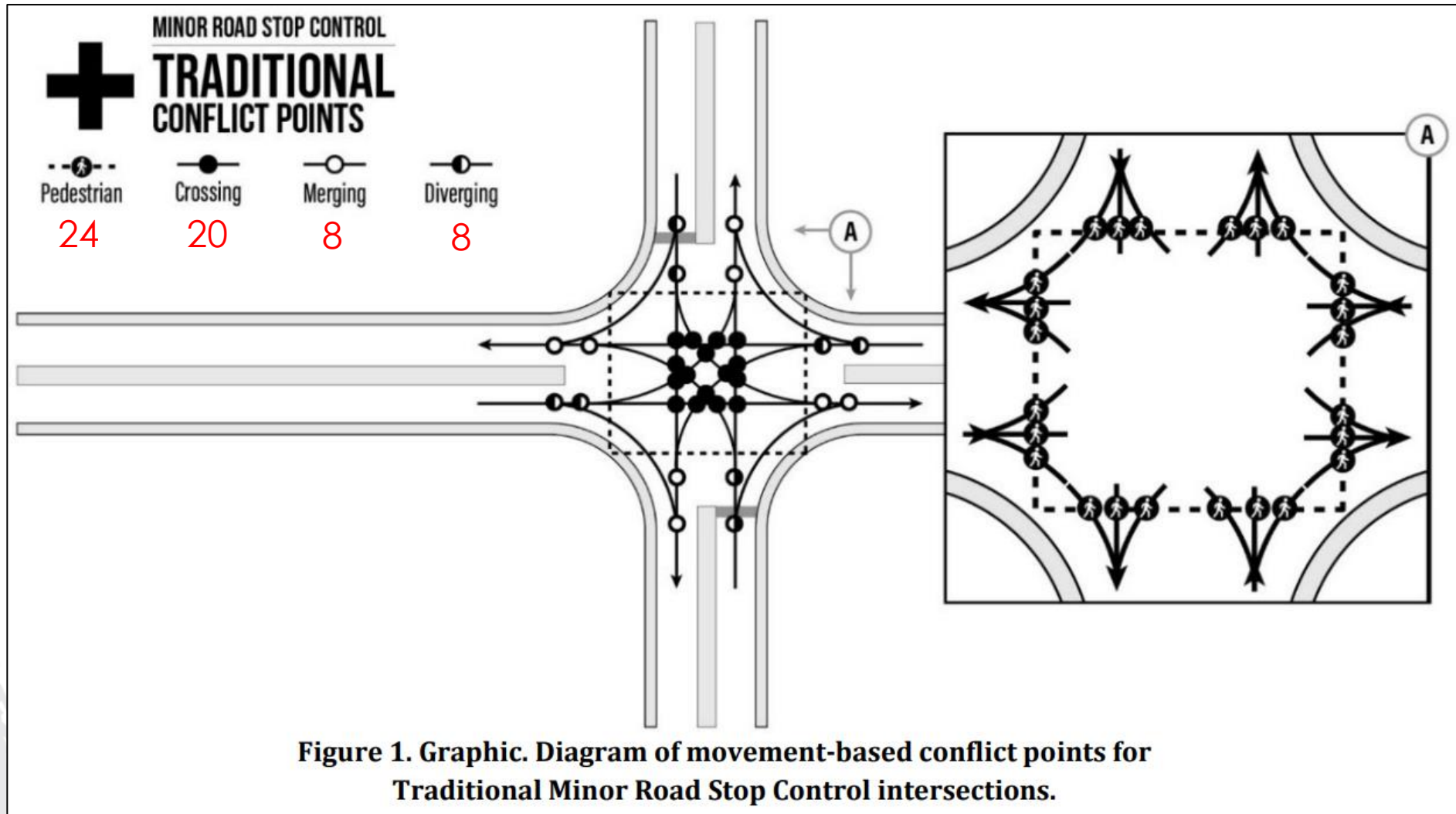
Attachment D - Page 6

Bohannon  Huston

PEDESTRIAN HYBRID BEACON (HAWK) CROSSING LOCATION RE-EVALUATION



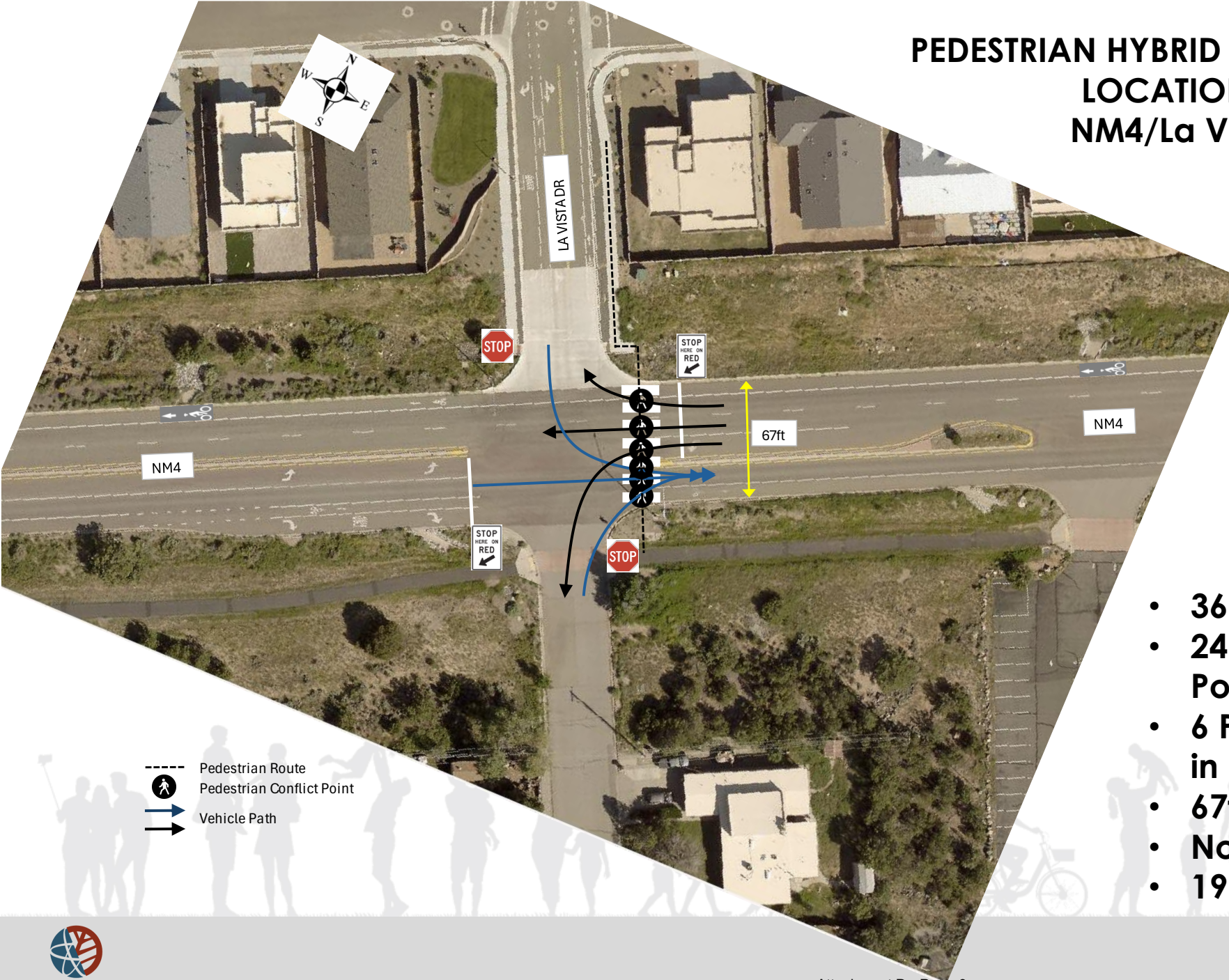
PEDESTRIAN HYBRID BEACON (HAWK) CROSSING LOCATION RE-EVALUATION NM4/La Vista Dr Intersection



**Figure 1. Graphic. Diagram of movement-based conflict points for
Traditional Minor Road Stop Control intersections.**

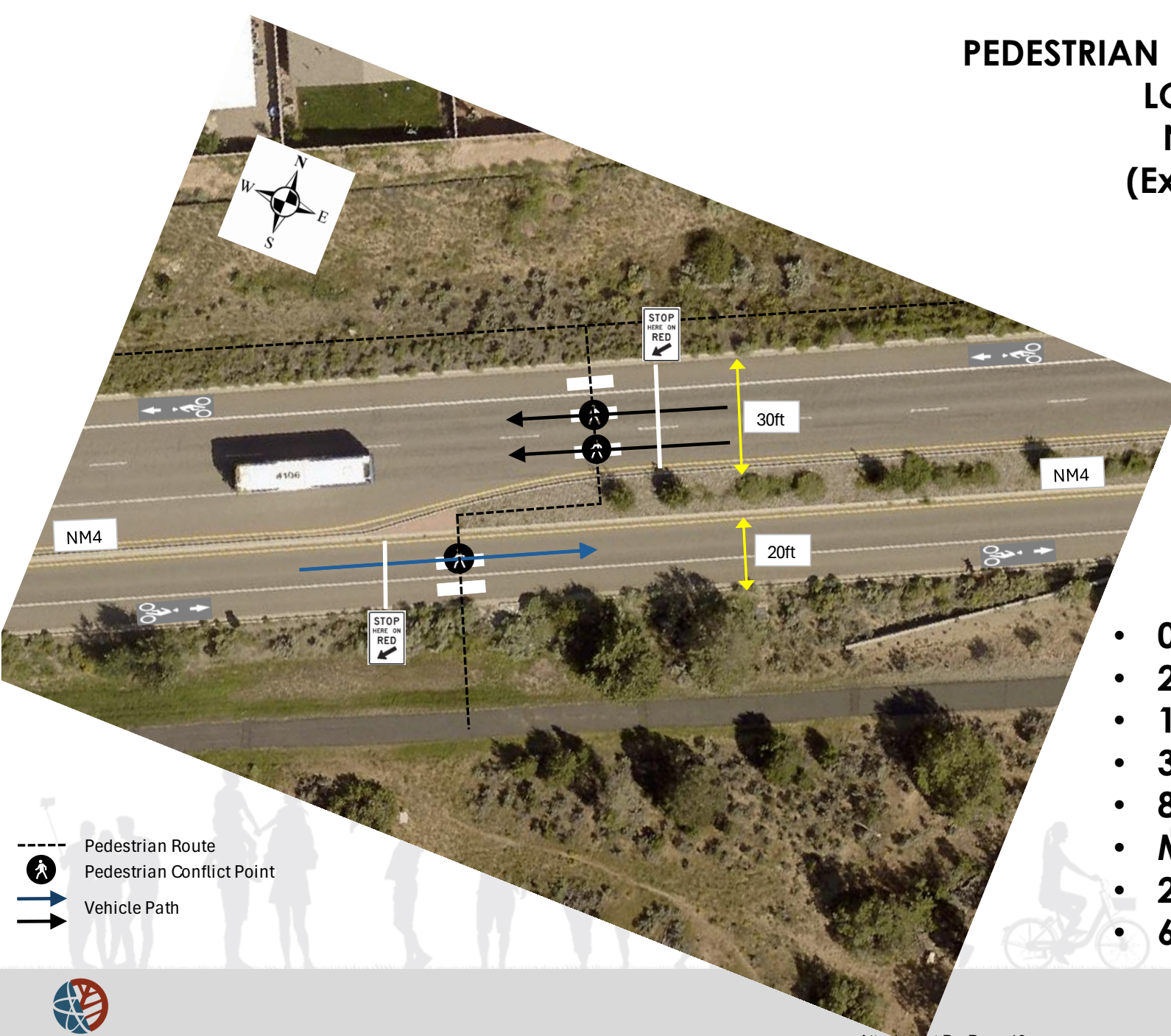
Source: FHWA Publication No.: FHWA-SA-21-013 A Safe System-Based Framework and Analytical Methodology for Assessing Intersections

PEDESTRIAN HYBRID BEACON (HAWK) CROSSING LOCATION RE-EVALUATION NM4/La Vista Dr Intersection



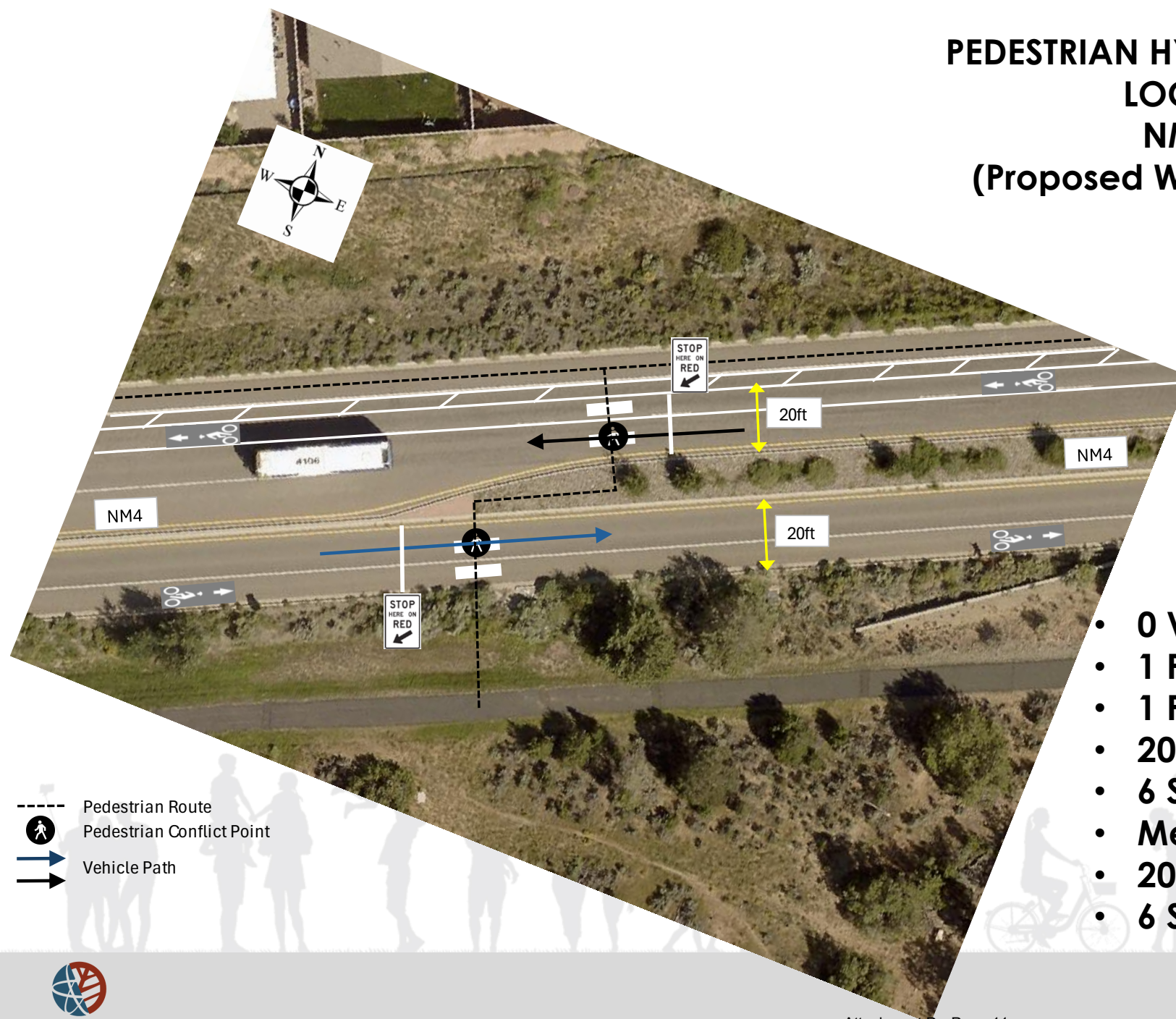
- 36 Vehicle/Vehicle Conflict Points
- 24 Pedestrian/Vehicle Conflict Points
- 6 Pedestrian/Vehicle Conflict Points in HAWK Crossing
- 67ft Crossing Distance
- No Median Refuge
- 19 Second Exposure @ 3.5ft per sec

PEDESTRIAN HYBRID BEACON (HAWK) CROSSING LOCATION RE-EVALUATION NM4 Mid-Block Location (Existing Road Cross Section)



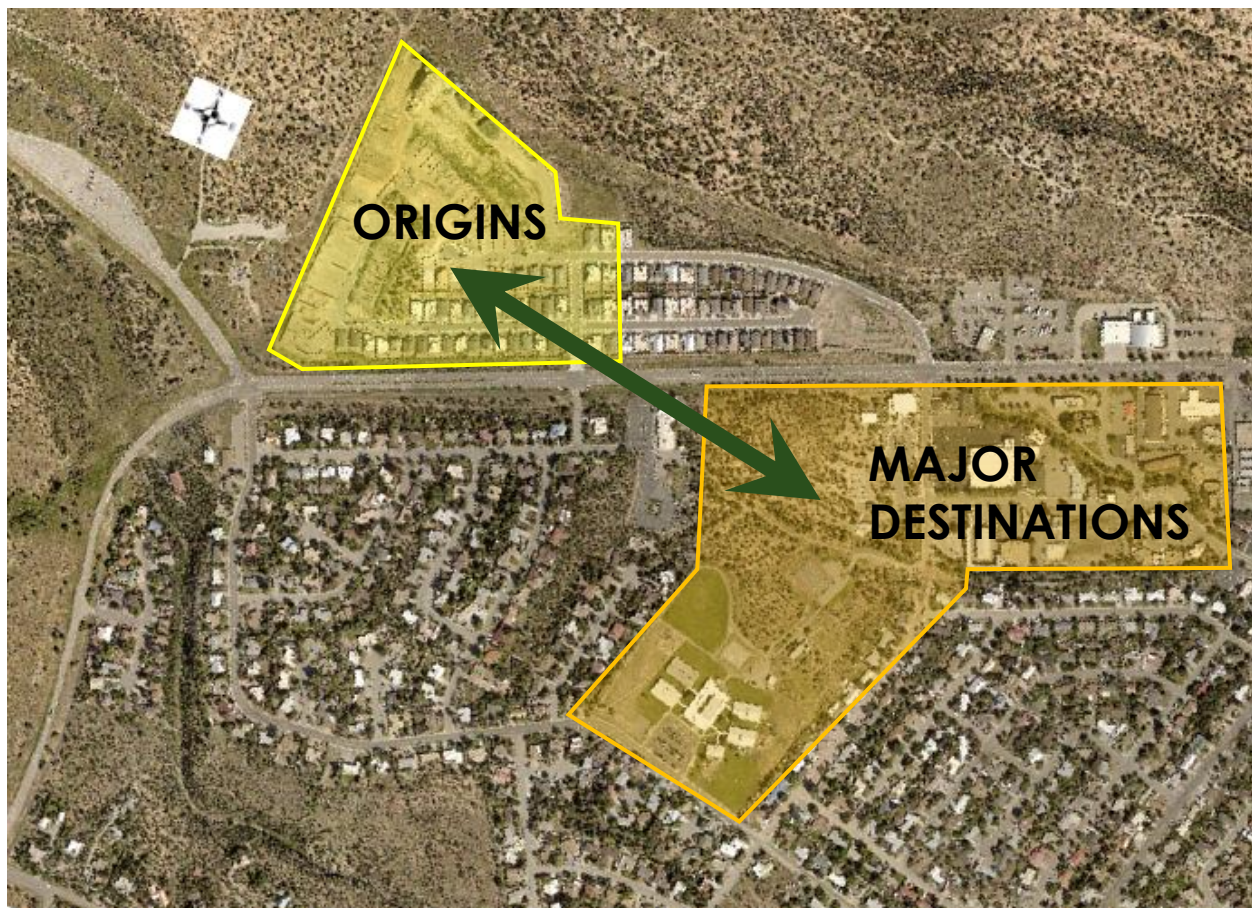
- 0 Vehicle/Vehicle Conflict points
- 2 Pedestrian/Vehicle Conflict Points (WB)
- 1 Pedestrian/Vehicle Conflict Points (EB)
- 30ft Crossing Distance (WB)
- 8.5 Second Exposure @ 3.5ft per sec (WB)
- Median Refuge
- 20ft Crossing Distance (EB)
- 6 Second Exposure @ 3.5ft per sec (EB)

PEDESTRIAN HYBRID BEACON (HAWK) CROSSING LOCATION RE-EVALUATION NM4 Mid-Block Location (Proposed WB Lane Reduction Cross Section)



- 0 Vehicle/Vehicle Conflict points
- 1 Pedestrian/Vehicle Conflict Points (WB)
- 1 Pedestrian/Vehicle Conflict Points (EB)
- 20ft Crossing Distance (WB)
- 6 Second Exposure @ 3.5ft per sec (WB)
- Median Refuge
- 20ft Crossing Distance (EB)
- 6 Second Exposure @ 3.5ft per sec (EB)

PEDESTRIAN HYBRID BEACON (HAWK) CROSSING LOCATION RE-EVALUATION SUMMARY



NM4/La Vista Intersection

Pros

- Convenient Route for All Destinations

Cons

- Increased Pedestrian Exposure
- Complex Decision Making for all Users
- Less Safe
- Longer Delays

Mid-Block Crossing

Pros

- Minimal Pedestrian Exposure
- Simplified Decision Making for all Users
- Safer
- Shorter Delays
- Convenient Route for Major Destinations

Cons

- Less Convenient Route for Some Destinations

RECOMMEND Mid-Block Crossing



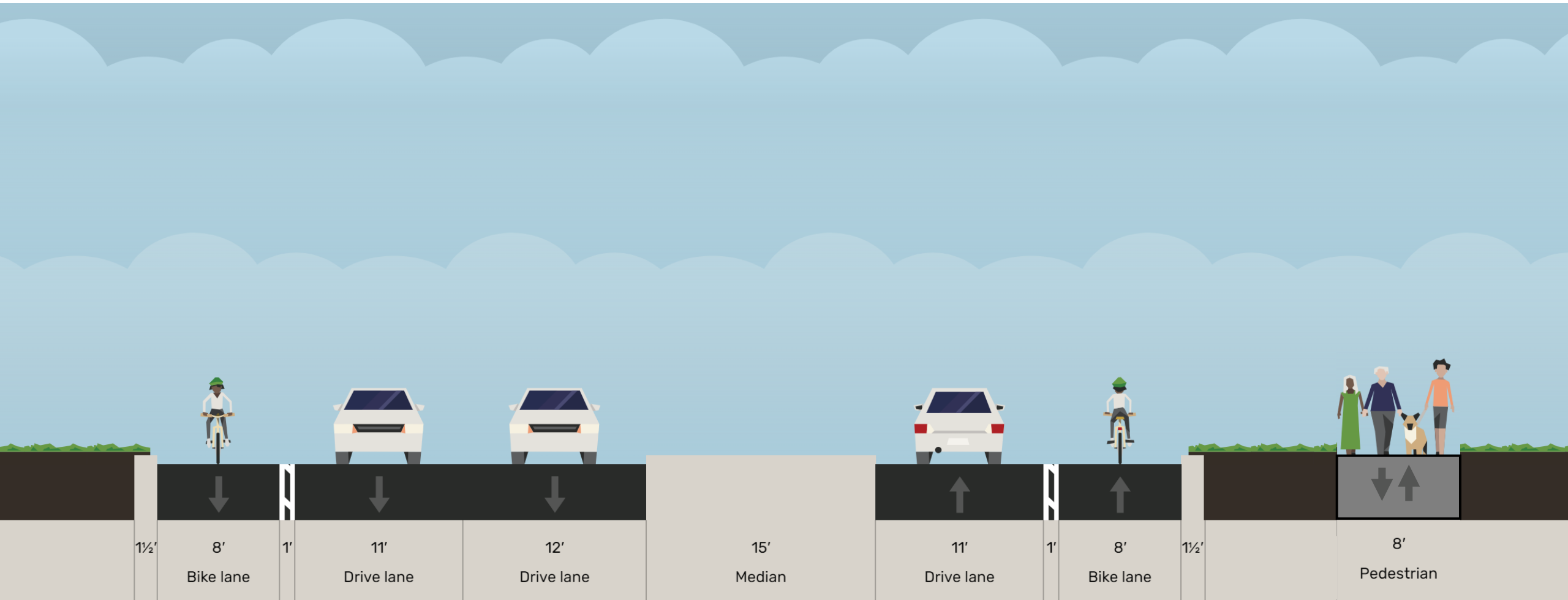
NM4 WESTBOUND LANE REDUCTION RE-EVALUATION



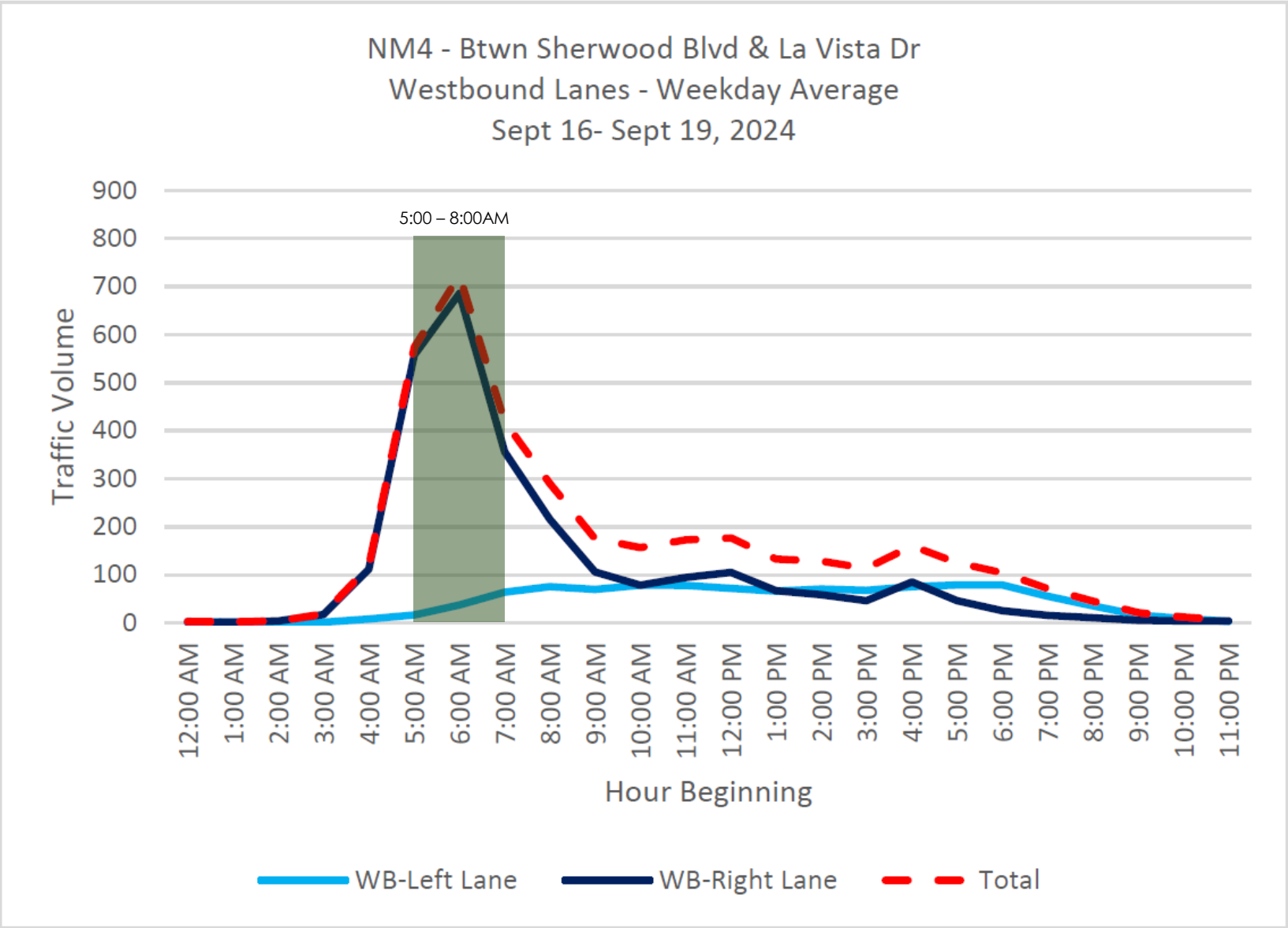
NM4 WESTBOUND LANE REDUCTION RE-EVALUATION

Existing Cross-Section

Sherwood Blvd to La Vista Dr



NM4 WESTBOUND LANE REDUCTION RE-EVALUATION



NM4 WESTBOUND LANE REDUCTION RE-EVALUATION



NM4 Westbound Approaching La Vista Dr.

NM4 WESTBOUND LANE REDUCTION RE-EVALUATION



NM4 Westbound Approaching La Vista Dr.

NORTHSIDE TRAIL LOCATION RE-EVALUATION

New Trail in Buffer Area



- Alignment could not be placed at the back of curb due to requiring significant drainage work.
- Corridor with minimal utility conflicts available.
- Require cut in some areas and fill in others to meet ADA slope requirements and connection to mid-block crossing.
- Basalt Rock is near surface in some areas.
- Estimated cost approximately 5 Times more than the cost to place the trail in NM4 Roadway

NM4 WESTBOUND LANE REDUCTION RE-EVALUATION NORTHSIDE TRAIL LOCATION REVALUATION SUMMARY

NM4 Westbound Lane Reduction

Pros

- Allows Trail to Utilize Roadway reducing construction costs
- Help Moderate Speeds to 35 MPH Speed Limit
- Improved safety at mid-block crossing
- Could be reestablished in the future if capacity is needed

Cons

- Potential delays from slow moving trucks

Northside Trail in Buffer Area

Pros

- Trail Buffered from NM4

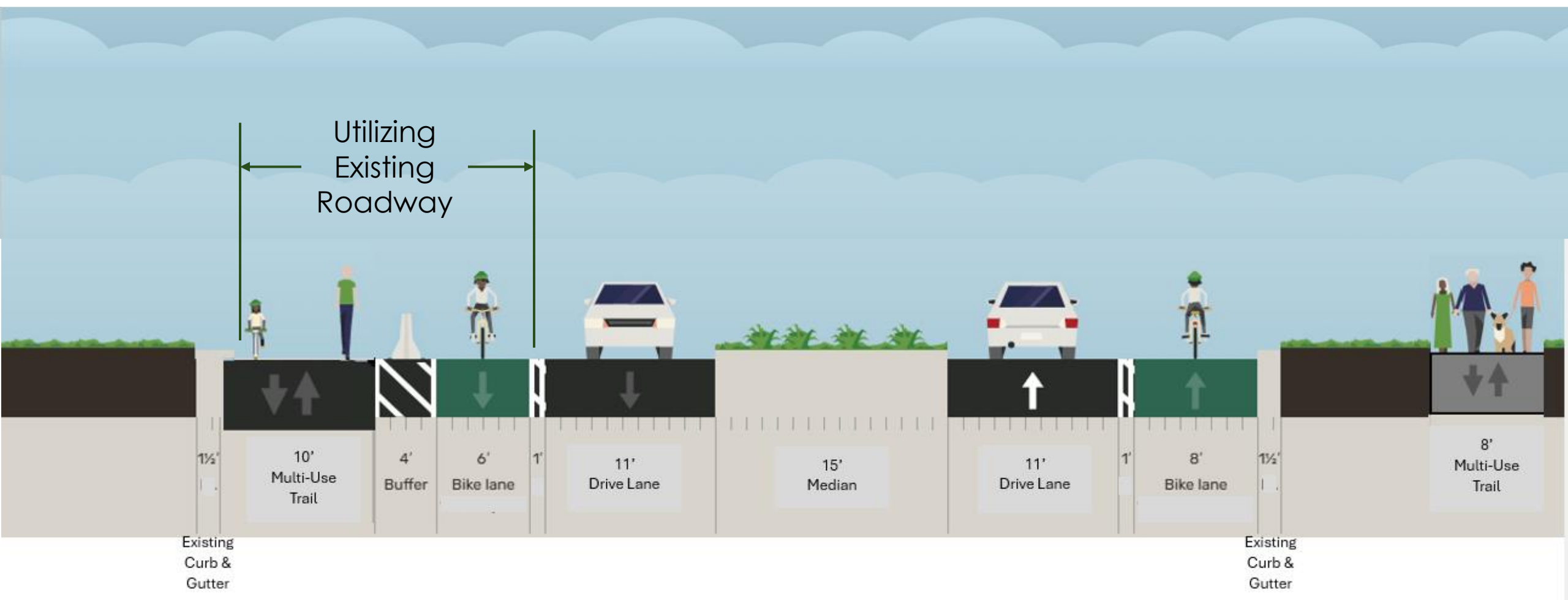
Cons

- 5 Times more Cost
- Some Construction Unknowns (Basalt)

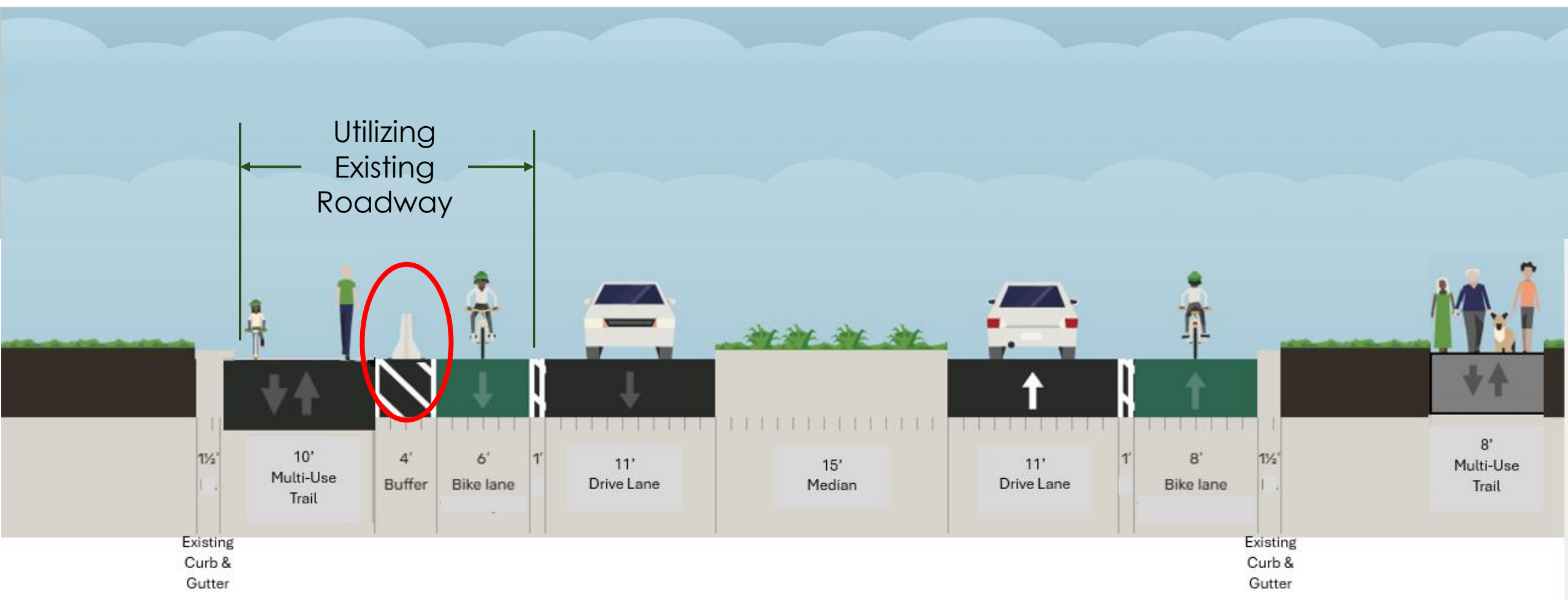


RECOMMEND WB Lane Reduction and Trail Placement on NM4

NM4 PROPOSED CROSS SECTIONS

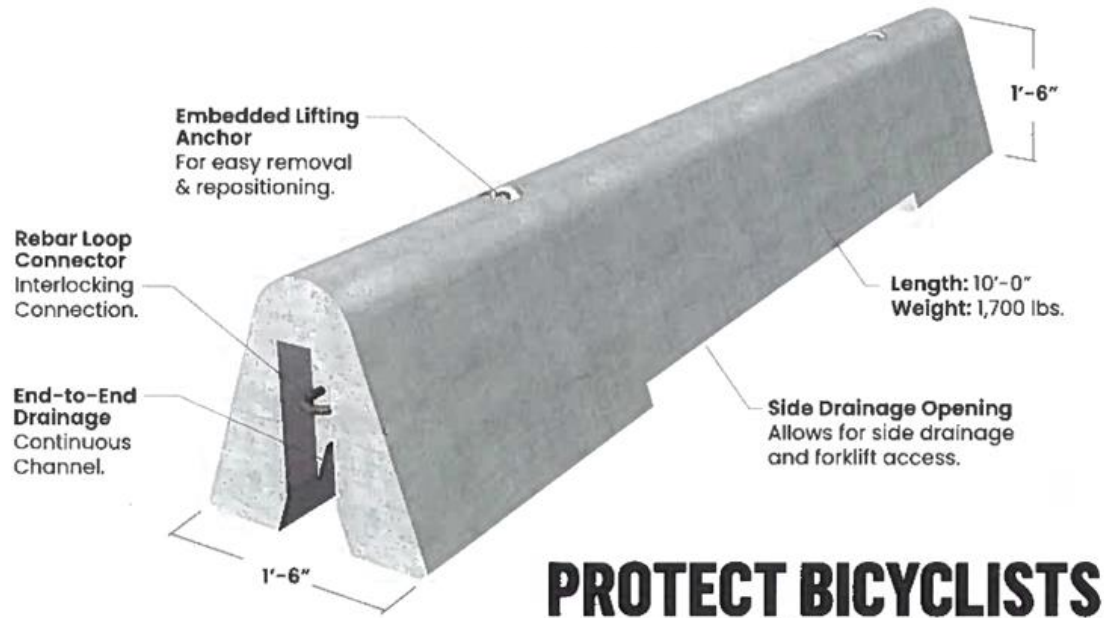


NM4 PROPOSED CROSS SECTIONS



PROPOSED TRAIL BUFFER BARRIER

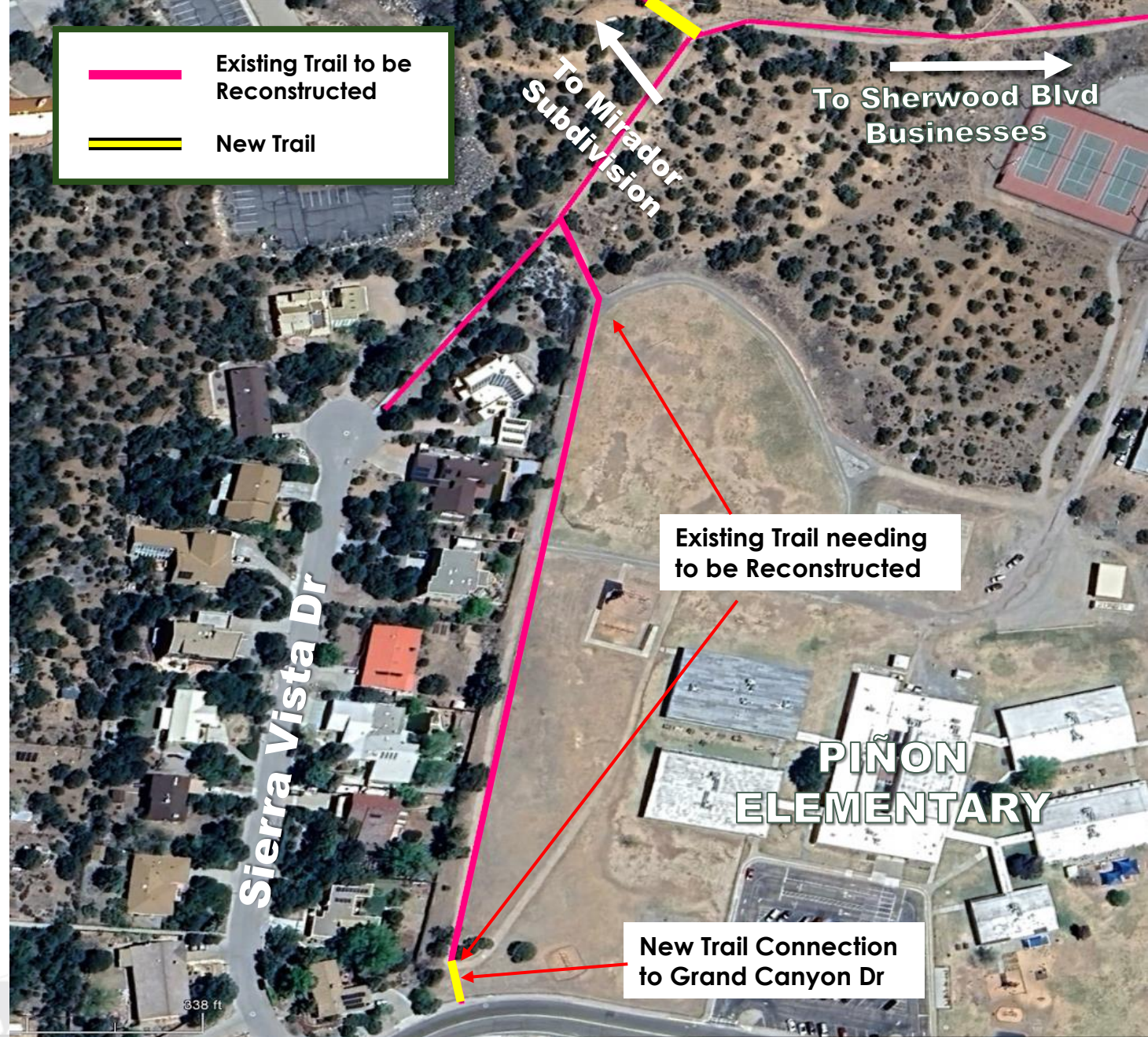
SAFE-T LANE Bike Lane Divider



PROJECT DETAILS

PIÑON ELEMENTARY TRAIL

- Easement drafted and under review by Los Alamos Public Schools to allow this trail section to be incorporated into the project.
- ~850 linear feet of existing trail reconstruction along the west side of the school campus to improve the existing trail condition and accessibility. With Easement it will be open for public access.
- Extending the existing trail to connect with the sidewalk on the northside of Grand Canyon Drive
- Continuing to pursue Federal Funding for this Trail.



PROJECT SCHEDULE

Public Meeting 1:
December 5, 2024

Final Design (90%):
Early May 2025

Approved Design (100%):
Summer/Fall 2025

Public Meeting 2:
February 6, 2025

Public Meeting 3:
May/June 2025

Construction:
Fall 2025 – Fall 2026



QUESTIONS?



Comments/Contacts

Please submit all comments in writing by **COB February 20** to:

Keith Wilson

Public Works Department

1000 Central Avenue, Suite 160

Los Alamos, NM 87544

or

Email: **keith.wilson@lacnm.us**

or

Phone: **(505)663-1757**



Thank You!

The Public Works Department staff thanks you for taking time out of your busy schedule to participate in the design and construction of this important public project!

