

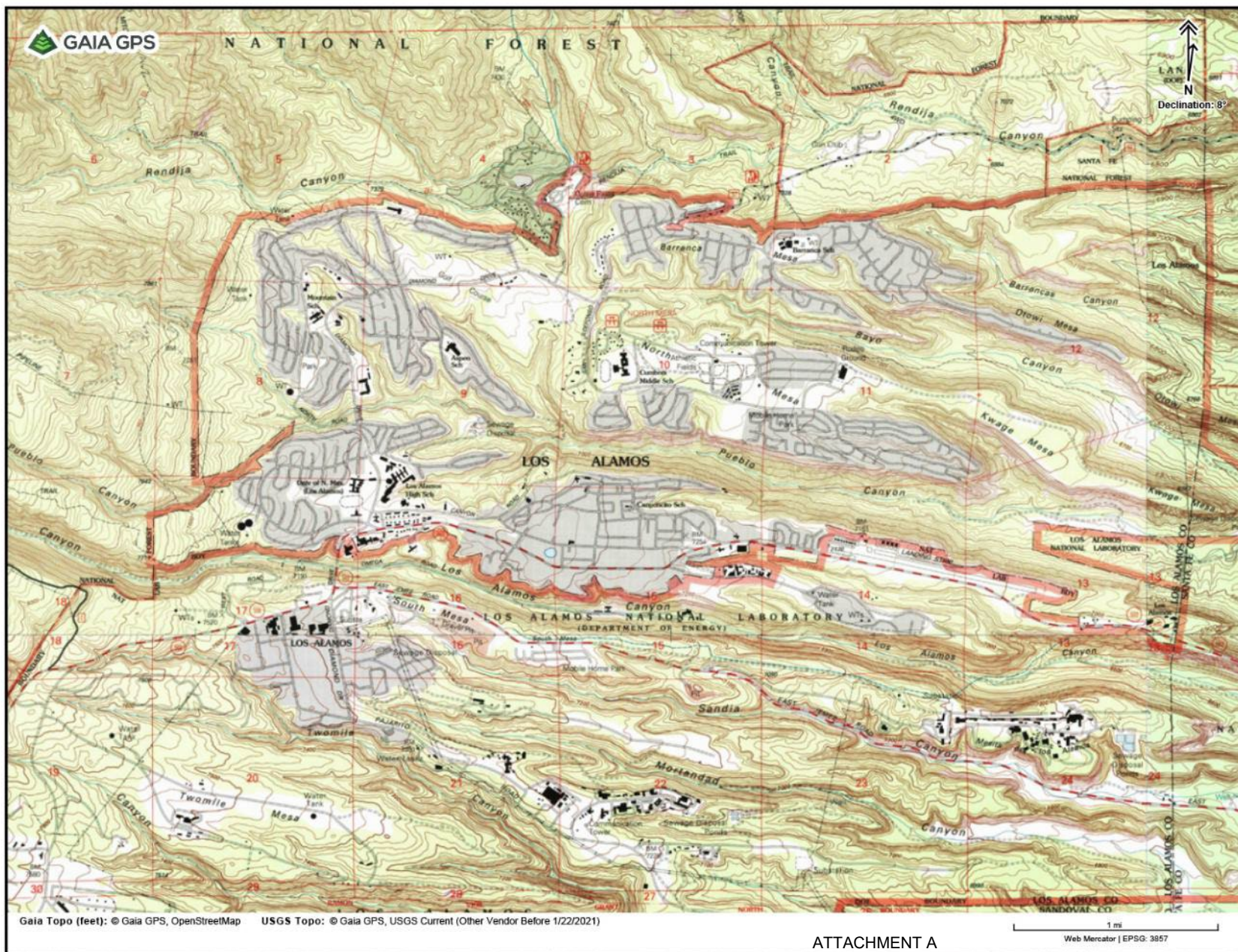


# Accessible Outdoors in Los Alamos

WHAT WE HAVE, WHAT WE COULD HAVE

Inclusivity Task Force 4/16/2025



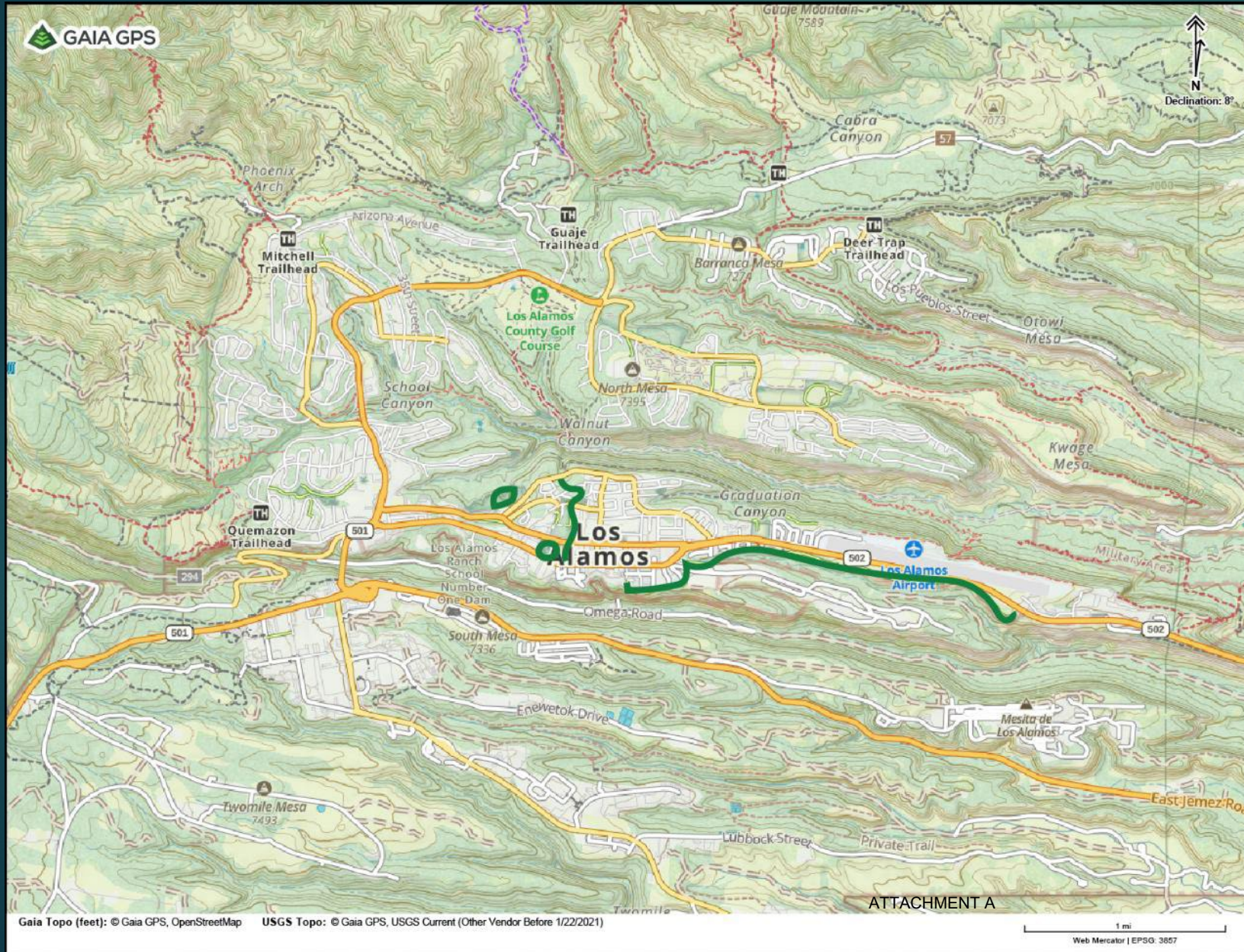


ATTACHMENT A

# Los Alamos Contours



# ADA Trails in Los Alamos



Total mileage:  
3.8 miles



# ADA Trails in Los Alamos



Canyon Rim  
Trail (2.5 mi)



Kinnikinnik  
Park Trail  
(.25 mi)



Urban Trail  
(.8 mi)



Ashley Pond  
(.16 mi)



# ADA Trails in Los Alamos: Kinnikinnik Park Trail Features



Clear signage



# Kinnikinnik Park Trail Features



ATTACHMENT A

- Firm surface
- Moderate grade



# Kinnikinnik Park Trail Features



ATTACHMENT A

Resting spots



# ADA Almost There: 80% Compliant



## Los Alamos Mesa Trail

Currently no plans for improvement



# ADA Almost There: In the Works



Cañada del Buey Trail  
(White Rock)



# ADA Almost There: In the Works



## Cañada del Buey Trail (White Rock)

County Public Works has submitted a grant application to resurface the trail, add benches, replace bridge



# ADA Coming: In the Works



Bayo Canyon  
Trailhead



# ADA Coming: In the Works



ATTACHMENT A

## Bayo Canyon Trailhead

County Parks and Recreation has budgeted CIP funds for trailhead and trail improvements in 2026



# ADA Coming: In the Works



## North Mesa Recreation Area (FEMAville)

County Parks and Recreation is developing a master plan that should include upgrading the existing trail to fully ADA compliant



# Possibilities



## Kwage Mesa Road

Flat terrain, views,  
2.2 miles



# Accessible Nature Observation Spaces



Accessible indoor space



Planned accessible outdoor space at the library

Accessible outdoor space at nature center that could be improved

ATTACHMENT A





# Possibilities: Accessible Nature Observation Spaces

- ▶ Short distance trip to an observation point with seating
- ▶ Special amenities: sounds, smells, touch displays
- ▶ Possible in Kinnikinnik Park, Deer Trap Mesa, Bayo Canyon, Overlook Park, Los Alamos Mesa Trail, Los Alamos Nature Center



# Public Information: Rating the Trails

Special brochure as a resource for accessible outdoor opportunities

- ▶ One Spoon: 0-2 miles, level and even with grades under 8%, paved, very easy to navigate, probably wheelchair accessible
- ▶ Two Spoons: 1-3 miles, short grades up to 12%, firm but unpaved surface with no obstacles, access takes a little planning, probably wheelchair hikeable
- ▶ Three Spoons: 3-5 miles, Prolonged grades of 10-15%; elevation changes over 500 ft or longer than .5 mile; soft surface with obstacles, requires advance planning or basic trail map reading



# Accessibility Working Group

- ▶ Report on status of accessible outdoors in Los Alamos
- ▶ Report on low-cost and major projects that could increase accessible outdoor opportunities in the county
- ▶ Work with PEEC to develop a local outdoor accessibility rating system
- ▶ Recommend a county-produced brochure focused on accessible outdoor recreation opportunities in the county