

DPU Annual Report: Gas Distribution

T. Clay Moseley
Deputy Utilities Manager - GWS Services

Gas System at a Glance

- 3 border stations (Townsite)
- 1- 300 psig HP regulator station – White Rock
- 100 psig HP main (TS) - 15 miles
- 20 psig MP main (TS) - 97 miles
- Pressure regulating stations (TS) - 16
- 60 psig MP main (WR) – 26 miles
- Additions in 2024:
 - 7,300 ft 4" MDPE
 - 3,100 ft ¾" MDPE
 - 45 ea – 1" service lines

2024 O&M Report

➤ Required Annual Maintenance Activities

- **Monthly Pressure Data Downloads:** Completed as scheduled
- **Pipeline Patrol:** Conducted twice per year
- **Cathodic Protection Inspection:** Annual inspection completed
- **Atmospheric Corrosion Control:** Implemented and monitored
- **Gas Pressure Relief Valve (PRV) Inspection/Adjustment:** Regular inspections completed
- **Continuing Surveillance/PRC:** Ongoing surveillance maintained
- **Gas Key Valve Inspection and Maintenance:** Inspections completed
- **Gas Leak Survey:** Conducted with all necessary follow-ups
- **Utility GAS Locates:** 1,320 completed to date

➤ Incidence Response Activities

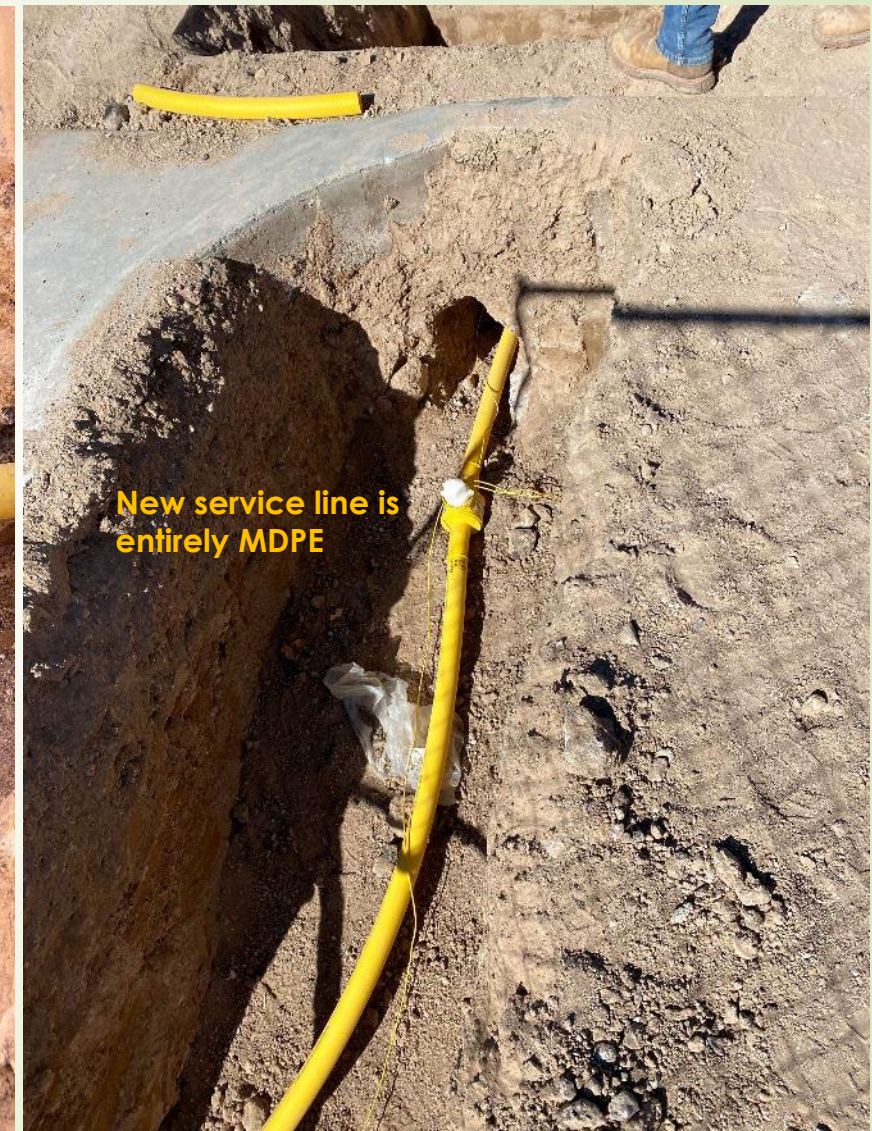
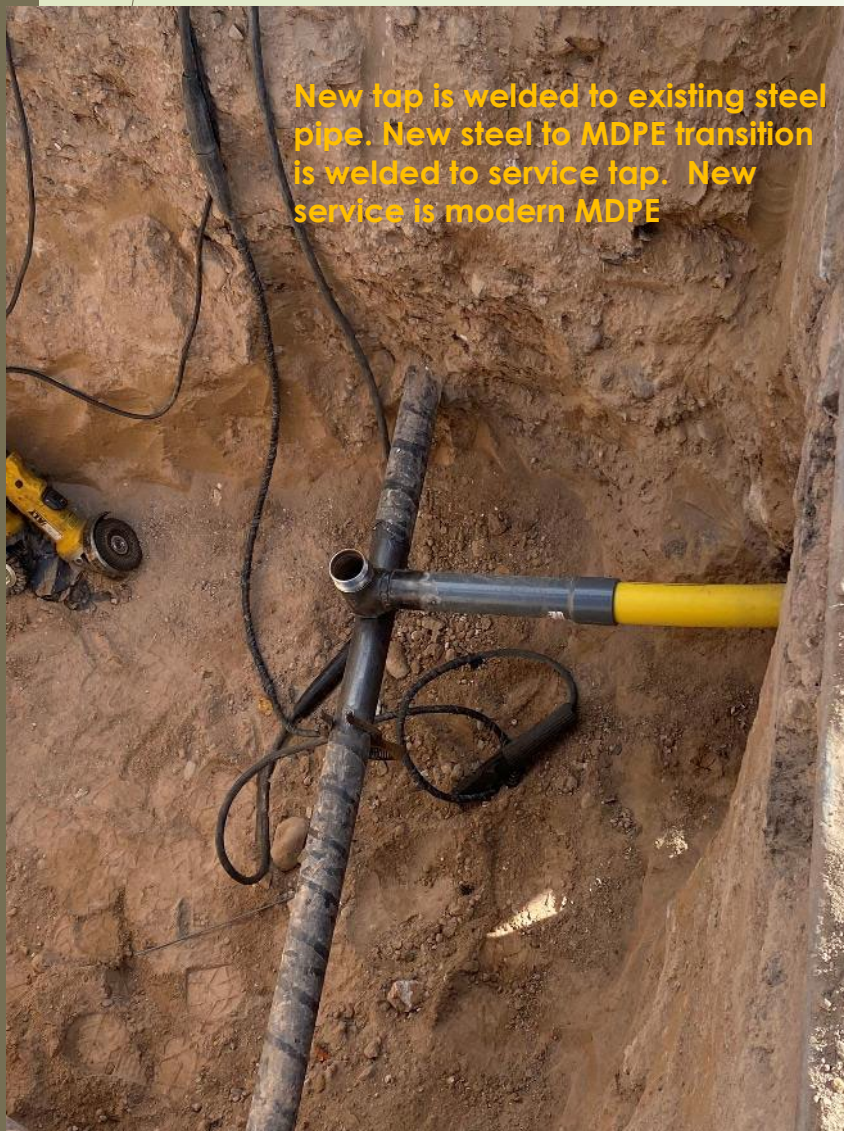
- **Underground Gas Leak Repairs:** 13 leaks repaired
- **Third-Party Line Hits:** 7 incidents reported with GWS response
- **Gas Customer Callouts:** 243 total callout responses - various categories
- **Magnesium Anode Installations:**
 - 20 units of 48 lb. anodes
 - 15 units of 1 lb. anodes
 - 2 units of 5 lb. anodes
- **Elk Ridge Leak Survey:** Initial survey completed with ongoing monthly evaluations

➤ Meter Changeouts

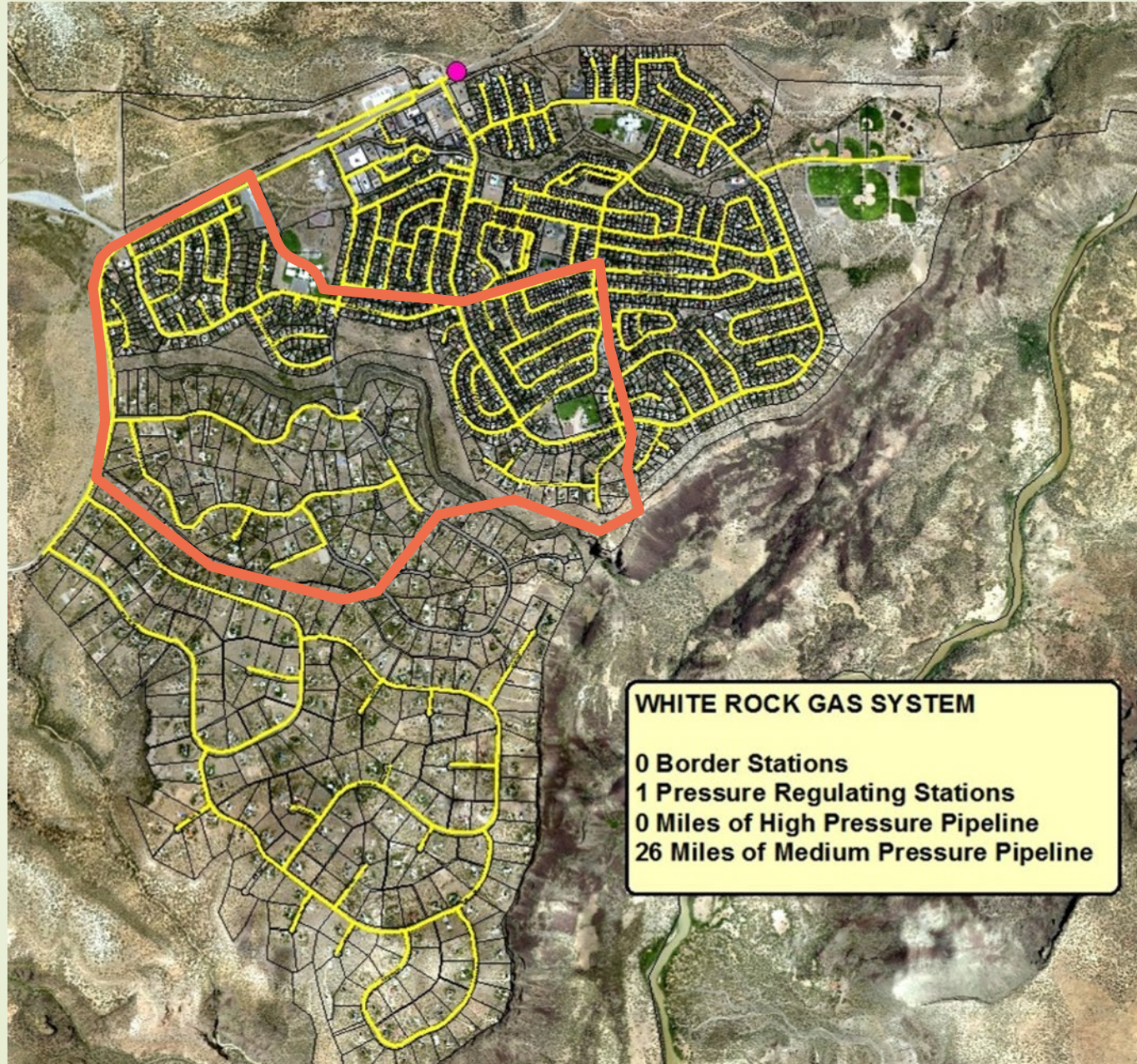
- **Commercial Meters** – 9 commercial meters replaced/upgraded
- **Residential meters** – 34 residential meters replaced/upgraded

Tasks Items highlighted in RED denote areas in which NMPRC-mandated corrective action has been accomplished

White Rock Steel Pipeline New Institutional Service Installation – Chamisa Elementary School



Cathodic Protection – Increased Number of Anodes on WR Steel



DPU Gas Rules and Regulations, Construction Standards, Regulatory Compliance, Ownership & Operation of Municipal Gas System

- **All gas transmission and distribution systems are regulated by the Pipeline and Hazardous Material Safety Administration (PHMSA) – a division of the DOT**
- **49 CFR Part 192 – Transportation of Natural Gas and Other Gas by Pipeline: Minimum Federal Safety Standards**
- **NMPRC Pipeline Safety Bureau –**
 - Enforces federal and state pipeline safety regulations,
 - Investigates intrastate pipeline incidents and accidents within New Mexico
 - Enforces the State Excavation Damage Prevention Law
 - Responsible for licensing crude oil, natural gas, and oil/gas product pipelines
- **Development & Ownership of Municipal Gas Distribution System:**
 - Abide by Anti-donation Clause of New Mexico State Constitution (Art.IX, Sec. 14): Sec. 14 Aid to private enterprise
 - Neither the state or any county, school district or municipality, ...shall directly or indirectly lend or pledge its credit **or make any donation to or aid of any person, association, public or private corporation...**
 - Los Alamos County Department of Public Utilities Rules and Regulations
 - Section Subdivisions (SD-1) Rule – Subdivision & Site Plan Development Process

Cont. (DPU development rules, gas rules,
and construction standards)

► **Los Alamos County Department of Public Utilities Rules and Regulations**

- Section Subdivisions (SD-1) Rule – Subdivision & Site Plan Development Process
- Section Gas (G-1 to G-4) Rules
 - Rule G-1: Description of Service
 - Rule G-2: Service Connections
 - Rule G-3: Meter Requirements
 - Rule G-4: Responsibility of Gas Equipment

► **Los Alamos County Department of Public Utilities Construction Standards**

- Section 301 Gas Systems
- Follows Industry Regulatory Requirements and Standards:
 - ASTM, ASME, API, ANSI

Cont. (construction and acceptance of new public utility infrastructure)

➤ **Development of Public Utilities must follow County development process and rules**

- Designs must be developed and stamped by a Registered Professional Engineer in the State of New Mexico
- Platting/granting of easements – approved by DPU and County Council
- Agreements with County to follow regulated standards
- Agreements with County to allow County staff to perform inspections and enforce standards and requirements

➤ **DPU Engineering & Operations must enforce all development and construction requirements**

- Utility contractors must possess class GF-9 or GF-98 licenses to install gas utility infrastructure
- Be certified by the County's GWS Superintendent to weld distribution gas piping
- In some situations, be Gas System Operator Qualification (OQ) -certified to perform certain procedures on live gas system piping

➤ **DPU Engineering & Operations must formally accept newly installed utility infrastructure if deemed satisfactory according to all applicable standards and requirements**

➤ **DPU makes recommendation to the County Council to formally take ownership and operational responsibility for newly installed and compliant utility infrastructure**

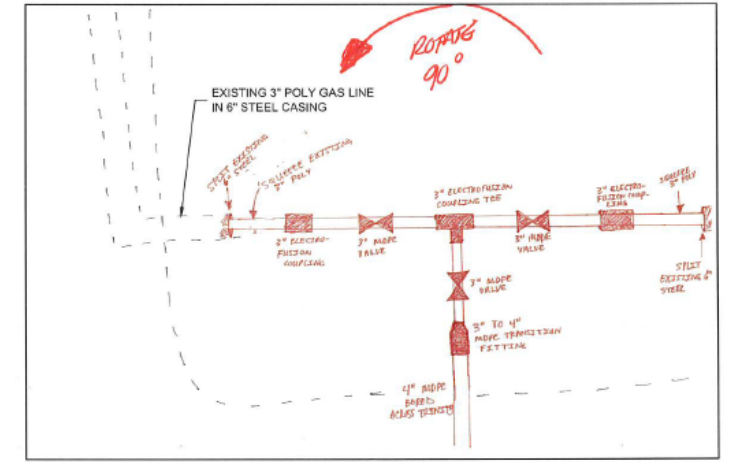
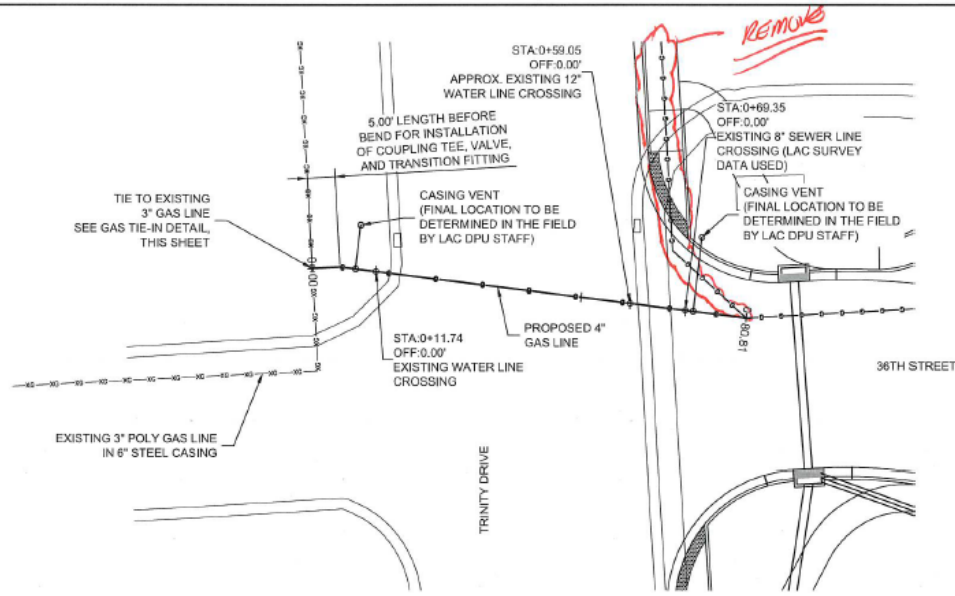
Development Process Examples: El Mirador Subdivision & The Hills Apartments

Gas System Oversight at El Mirador



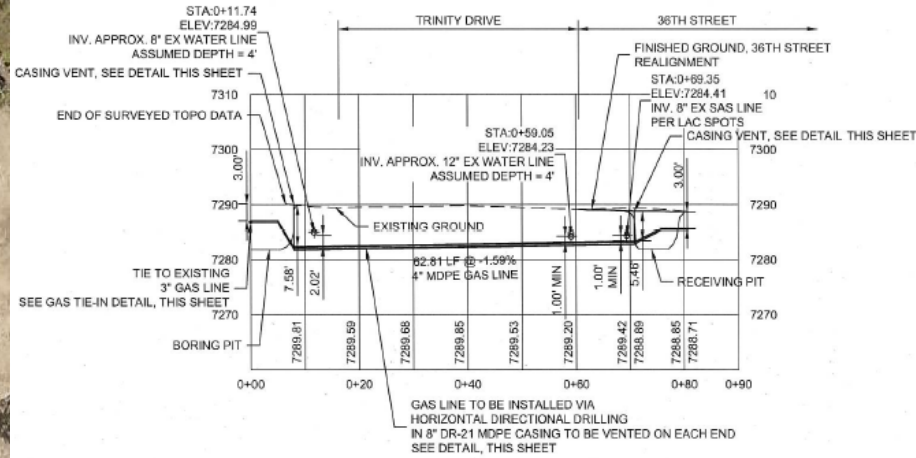
The Hills Apts. –

DPU System Coordination Details: Gas pipeline crossing Trinity Dr. and Rerouting Alignment

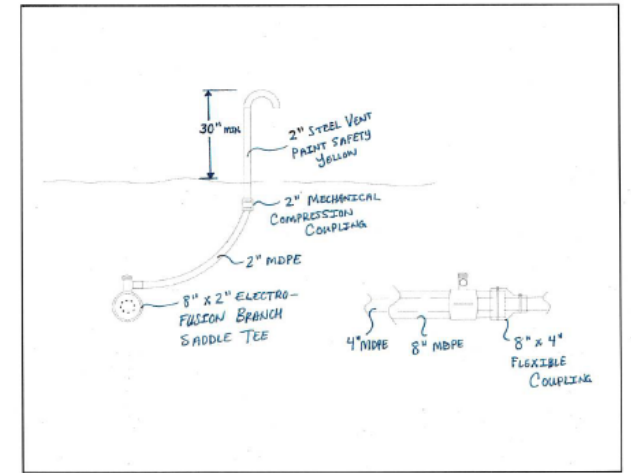


GAS TIE-IN DETAIL

PROPOSED GAS LINE CROSSING - PLAN VIEW
SCALE: 1" = 10'

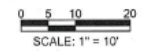


PROPOSED GAS LINE CROSSING - PROFILE VIEW
SCALE HORIZ. 1" = 10'
SCALE VERT. 1" = 10'



CASING VENT DETAIL

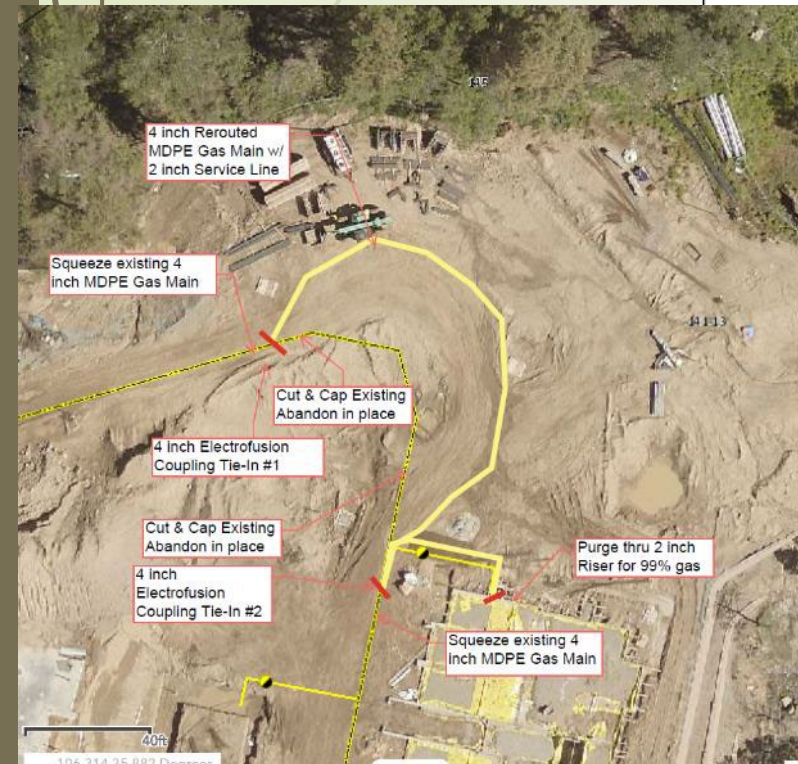
NOTE:
UTILITIES SHOWN ARE FROM
A VARIETY OF LAC SURVEY DATA
AND APPROXIMATE GIS LOCATES.
CONTRACTOR TO POTHOLE AND
VERIFY ALL UTILITIES IN FIELD
PRIOR TO CONSTRUCTION.



PROPOSED GAS LINE
CROSSING TRINITY DRIVE

SFE
C

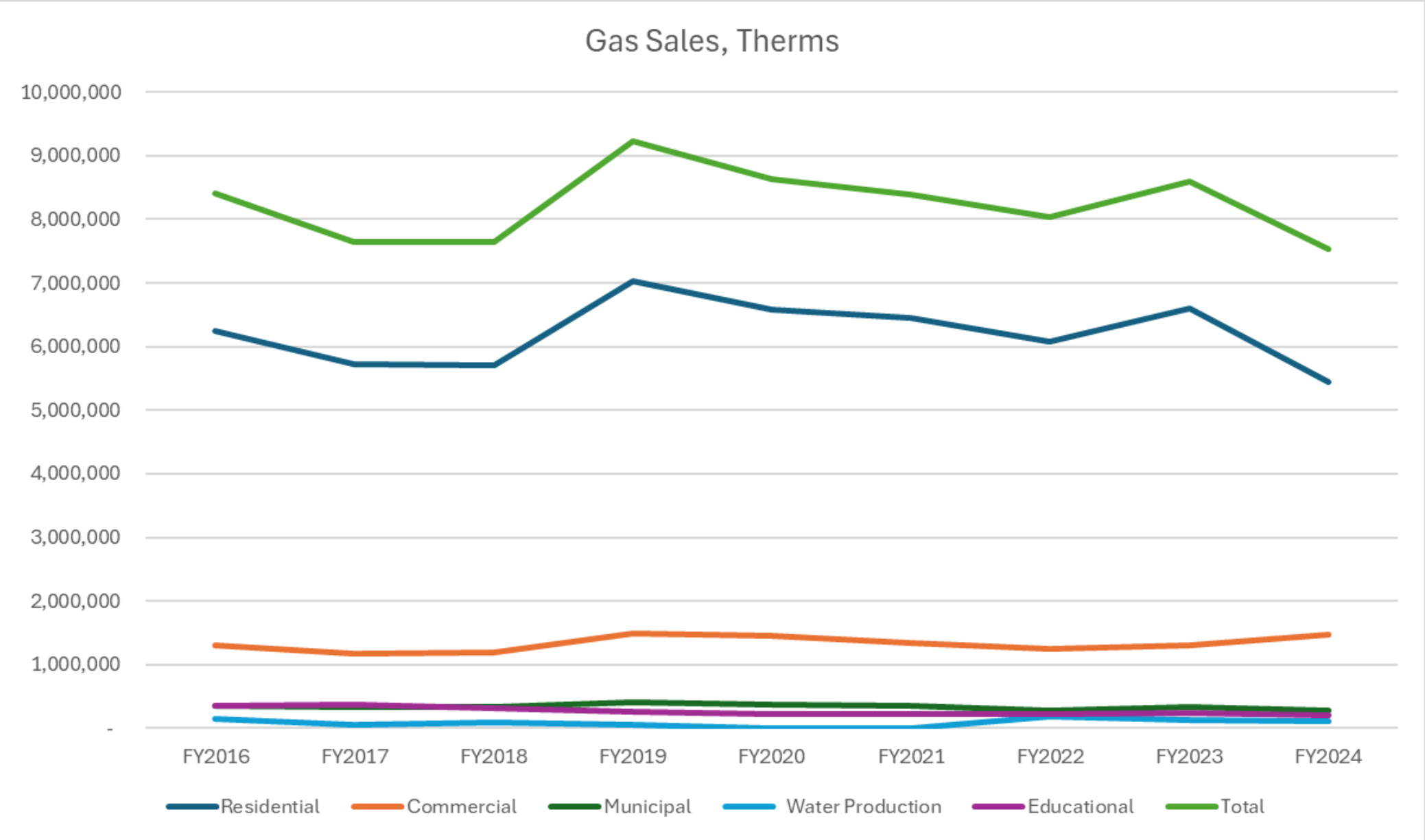
Santa Fe Engineering
Consultants, LLC
1599 St. Francis Drive, Suite B
Santa Fe, N.M. 87505
(505) 862-2845 Fax (505) 862-2541
http://www.SFENG.com



Strategic Planning

- ▶ Continue to invest in workforce – GWS gasfitter license apprenticeship program and operator qualifications (OQ) training and certifications
- ▶ Engaged and well-trained workforce is critical to the operation of a regulated municipal gas system
- ▶ New Gas System Superintendent is dedicated to developing & continuously updating workflows to meet regulatory requirements
 - Development of system records/data management in our Energy WorldNet (EWN) compliance management system
- ▶ Continuously train and improve operator qualification procedures – over 90 qualification groups with more than 180 procedures
- ▶ Standardize and document regulated gas system SOPs
- ▶ Collaborate and cross-train DPU's Engineering staff on O&M regulations and procedures
- ▶ Continue asset management program – very critical process

Metered Gas Sales



Thank you.
Questions or
comments?

