



# Residential Sustainability Report

Service Period: December 2025

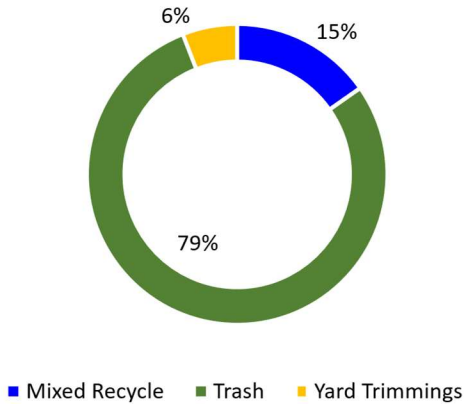


LOS ALAMOS

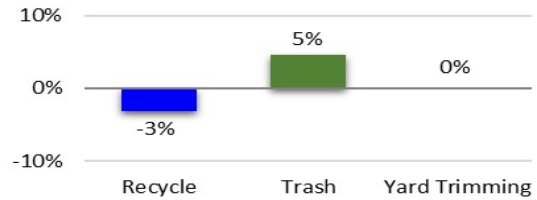
December Diversion Rate: **21%**

The *diversion rate* is the percent of recyclable and compostable material diverted from the landfill.

## Monthly Collection Report

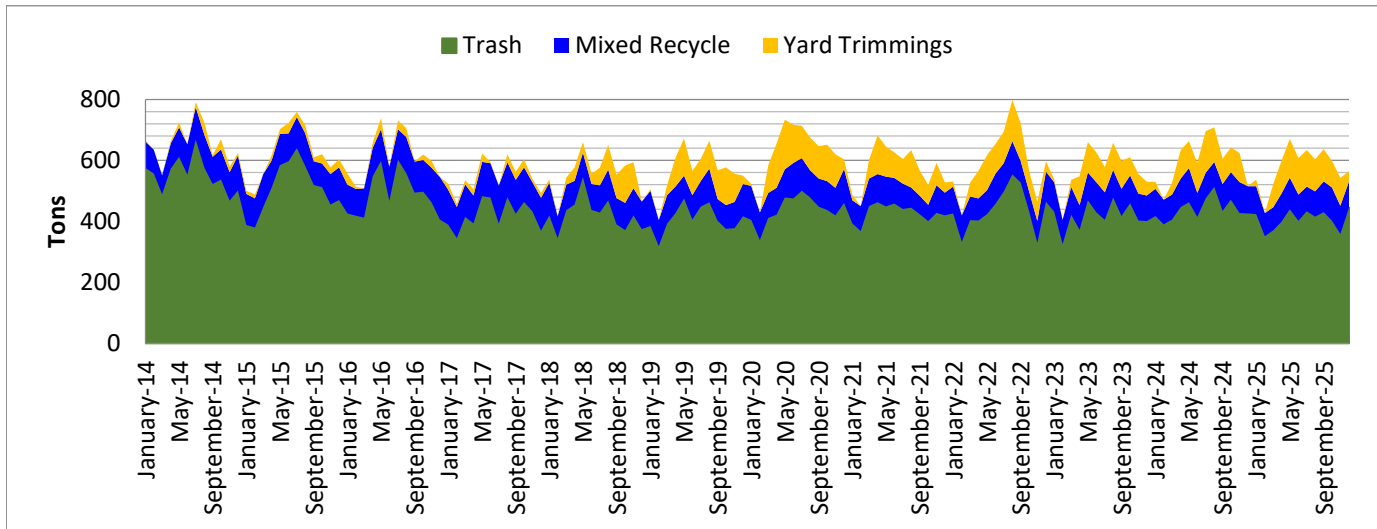


## % Change Previous Year

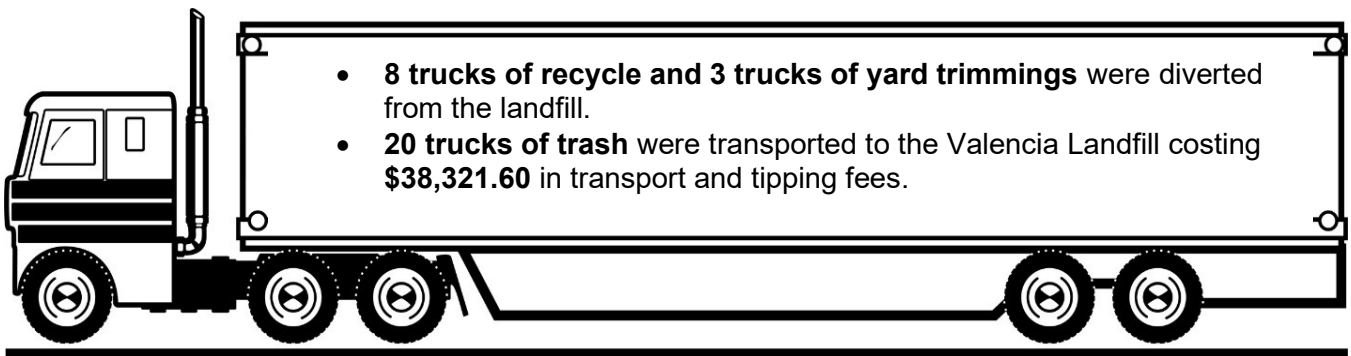


	Dec-24	Dec-25
Yard Trimming	0.00	33.31
Recycle	89.06	86.28
Trash	425.89	445.22

In December by recycling and composting Los Alamos County reduced GHG emissions by ~362 tons\*



In 2025 by recycling and composting Los Alamos County reduced GHG emissions by ~5,645 tons\*



For more information contact Environmental Services Division at 505.662.8163 or email [solidwaste@lacnm.us](mailto:solidwaste@lacnm.us)

\*GHG emissions calculated using <https://www.stopwaste.co/calculator>