



County of Los Alamos

1000 Central Ave.
Los Alamos, NM

Agenda - Final Tourism Implementation Task Force

*Christiana Hudson; Consetta Goettee; David Jolly; and Lauren
McDaniel; Board Members: Jonathon Creel, Historic
Preservation; Katie Bruell, Lodger's Tax; Georgia Strickfaden,
Transportation Board, and David Teter, Parks and Recreation*

Wednesday, December 1, 2021

12:00 PM

Due to COVID-19 concerns, meeting will be
conducted remotely.

*Members of the Public can, also, join this meeting session to make
public comment via Zoom by pasting into their browser the following:*

*<https://us06web.zoom.us/j/93935191820> once the session has
started.*

Or Telephone:

*Dial(for higher quality, dial a number based on your current
location):*

*US: +1 346 248 7799 or +1 720 707 2699 or +1 253 215 8782
or +1 312 626 6799 or +1 646 558 8656 or +1 301 715 8592*

Webinar ID: 939 3519 1820

I. Call to Order

II. Introductions/Announcements

III. Women's Army Corp. (WAC) Dormitory

- A. [15195-21](#)** Presentation and Solicitation of Public Input on Women's Army Corp.
(WAC) Dormitory Project

Presenters: Linda Matteson

Attachments: [A - LAC WAC Phase 1 Community Presentation](#)

IV. County Use of Glyphosate

- A. [15194-21](#)** Consideration and Possible Action on County Use of Glyphosate

Presenters: Tourism Implementation Task Force

Attachments: [A - Pesticide presentation](#)
 [B – Pesticide Use in Los Alamos County Presentation](#)
 [C - Oct. 21, 2021 ESB Meeting minutes](#)

V. Approval of 2022 Meeting Calendar

A. [15192-21](#) Consideration of 2022 Meeting Calendar

Presenters: Linda Matteson, Deputy County Manager

Attachments: [A - Proposed 2022 Meeting Calendar](#)

VI. Public Comment

VII. Next Meeting Scheduled

VIII. Adjournment



County of Los Alamos

Staff Report

December 01, 2021

Los Alamos, NM 87544
www.losalamosnm.us

Agenda No.: A.

Index (Council Goals):

Presenters: Linda Matteson

Legislative File: 15195-21

Title

Presentation and Solicitation of Public Input on Women's Army Corp. (WAC) Dormitory Project

Body

During the Manhattan Project, a 20 person dormitory was built. The construction drawings are dated April 1943 and the current address of the building is 1725 17th Street. This particular dormitory was used to house members of the Women's Army Corp (WAC). In the "Enabling Legislation for Manhattan Project National Historical Park (MPNHP)," the eligible areas are defined for each site. For Los Alamos, "the former dormitory located at 1725 17th Street" is specifically noted. In the MPNHP Foundation Document (January 2017), the Women's Army Corp Dormitory was identified in the related resources at Los Alamos as "park-eligible in the park legislation but not within the current park boundary." Basically, the WAC dormitory is park-eligible but is currently not in the park.

The County bought the property in 2019 from the Christian Science Society. With the acquisition of the WAC) Dormitory (formerly the Christian Science Church), the County is currently working with Mullen-Heller Architecture to develop and define the future uses, examine and make suggestions for improvements and upgrades to the WAC Building. This design process includes obtaining public input from a series of public meetings. The first public engagement opportunities will be held on Wednesday, December 1, 2021. Contractor, Mullen-Heller, will present the process schedule and current findings about the state of the building.

Attachments

A - LAC WAC Phase I Community Presentation



LAC Women's Army Corps Dormitory

Community Information Gathering Session

November 2021

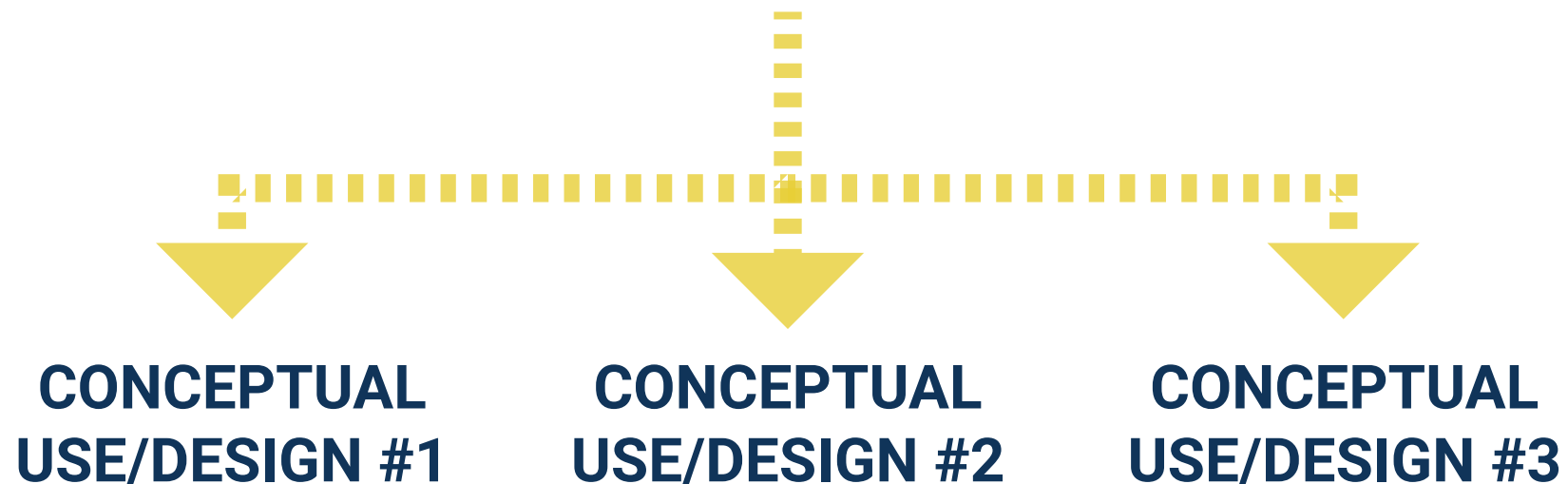
MHA will work with the community and stakeholders to craft a
Project Mission Statement

+

Project Goals

for the Women's Army Corps Dormitory Building, Site, and Use.

1. Project Open House for Community members
2. Meetings with Committees and Stakeholders
3. Online Informational Platforms



LAC Women's Army Corps Dormitory

The Process



COUNTY BOARDS + COMMITTEES

Parks + Recreation

Historic Preservation

Transportation

STAKEHOLDERS

Manhattan Project
National Historical Park

Tourism Implementation
Task Force

Historical Society

Fire Marshall

Valles Caldera + Bandelier
National Monument

Community Services

Economic Development

Sustainability Task Force

Chamber/MainStreet

Neighbors and Community at large

LAC Women's Army Corps Dormitory

Stakeholders

WAC DORM (CURRENTLY OUTSIDE PARK)

EXISTING MANHATTAN PROJECT NAT'L HISTORICAL PARK WALKING TOUR

FULLER LODGE

1 This grand building was built in 1928 as the Ranch School dining hall. It also served as nurses, staff, and guest quarters. Named for Edward P. Fuller, a staff member at the Ranch School, it is made of 771 massive pine logs, personally selected by architect John Gaw Meem and Ranch School director A.J. Connel. Fuller Lodge still serves as a public cultural event center.

MEMORIAL ROSE GARDEN

2 In 1947, the rose garden was started here by members of the Los Alamos Garden Club. At that time there was no cemetery, so rose bushes were planted in memory of those who died in Los Alamos. The garden club actively maintains the Rose Garden. It also serves as a popular place for weddings and other ceremonies. A Blue Star Memorial Byway site, and a Los Alamos National Laboratory memorial to those killed in the line of duty are located here.

ROMERO CABIN

3 Homesteading began on the Pajarito Plateau in the late 1800s. The Romero family built this cabin in 1913 on a nearby mesa. Like all homesteads on the plateau, it was acquired by the U.S. government for the Manhattan Project. In 1984, the cabin was moved downtown and rebuilt in 2010. It is open to the public on select days and during guided tours.

FIRE CACHE

4 Local homesteader Severo Gonzales Sr. built this stone building in the 1920s for the Los Alamos Ranch School to house firefighting equipment. Fires have always been a danger on the Pajarito Plateau due to droughts, log construction, and even wood burning stoves. The building is made of stone from the nearby Ancestral Pueblo Site.

THE BIG HOUSE

5 Across the street from the Romero Cabin was the site of the original main building for the Los Alamos Ranch School. The Big House design inspired the style of Fuller Lodge and other Ranch School structures. Students slept there year-round on screened porches as part of a physically, as well as academically, challenging education. The Big House contained a library and, during the war years, the non-broadcast radio station, KRS. In 1943, it also housed some of the first scientists who shared its one bathroom.

ANCESTRAL PUEBLO SITE

6 In roughly 1225 CE, this site was home to a group of Tewa-speaking people, ancestors of Pueblo groups now living along the Rio Grande. They built with blocks of ruff, the welded volcanic ash common in this area. Some rooms were for cooking and sleeping, while others were for storage.

BATHTUB ROW

7 These cottages were built for the Ranch School as residences and classrooms. Having the only bathtubs in town, these homes quickly acquired the name "Bathtub Row." J. Robert Oppenheimer lived in the house at the corner of Bathtub Row and Peach Street. This home is a private residence, and visitors are not allowed.

BATHTUB ROW (CONTD.)

7 The house next to the Oppenheimer house, now known as the Hans Bethe House, displays Cold War exhibits as part of the History Museum campus.

PERFORMING ARTS CENTER

8 The building near the corner of 15th and Nectar Streets was built as the Manhattan Project East Cafeteria. It is one of the few GI buildings left from WWII. Used by the growing post-war community as a recreation hall, it started serving as a playhouse in 1971, operated by the Los Alamos Little Theatre, a non-profit drama troupe.

POWER HOUSE

9 The building housing the diesel generators for the Los Alamos Ranch School was built in the early 1920s. In 1944, George Kistiakowsky, an explosives expert, and his new bride moved into it. As a joke, his friends carved a half-moon in the door of the attached shed the Army built. It is now used as administrative office space for the National Park Service.

HOPPER FIREPLACE

10 These rocks were part of the fireplace in the homestead cabin of William Macdonald "Mack" Hopper, who settled here in 1908. The chimney, probably made of stone from an Ancestral Pueblo site and put together with a mud/clay mortar, was rebuilt in 2016 for the Los Alamos Historical Society as an Eagle Scout project.

TOUCH THE SKY SCULPTURE

11 In May 2000, the county and adjacent lands were devastated by the 40,000-acre Cerro Grande wildfire. Nearly 400 Los Alamos homes were destroyed. This sculpture was erected a year later, commemorating the fire and community re-building.

ASHLEY POND

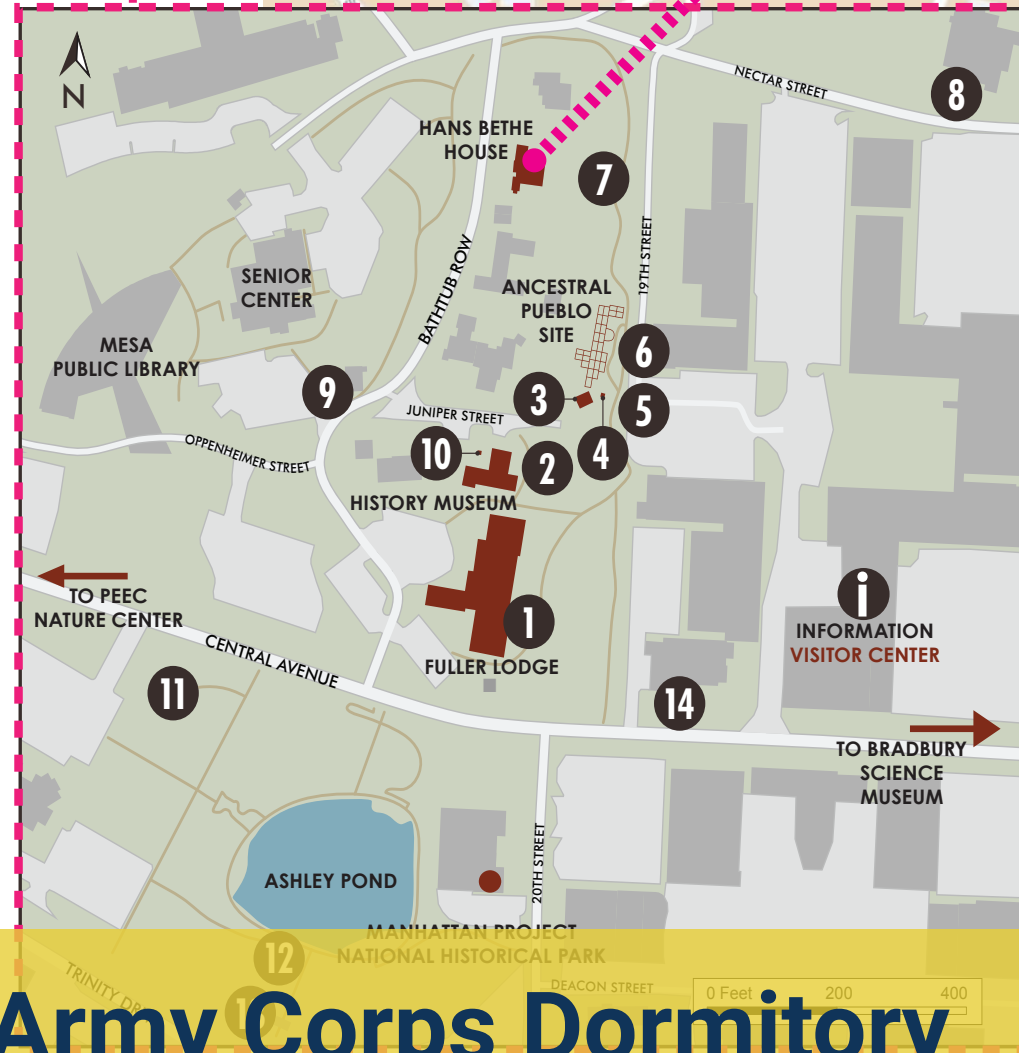
12 Ashley Pond began as a natural depression in the landscape. The Ranch School ensured its water supply by constructing a pipeline from a dam in Los Alamos Canyon. It was named for Ashley Pond Jr., the founder of the Los Alamos Ranch School, whose students could not resist the geographical pun. The boys used it for summer and winter sports. Blocks of ice were cut from the pond in the winter and stored in the Ice House. Ashley Pond Park contains a number of sculptures that are part of the county art collection curated by the Art in Public Places Board.

ICE HOUSE MEMORIAL

13 Today a memorial stands at the site of the Ranch School Ice House. During WWII, the nuclear core of the "Gadget" (the prototype atomic bomb) was assembled here and then transported to Trinity Site, 230 miles south near Socorro, NM. It was successfully detonated on July 16, 1945. During the Manhattan Project and for twenty years after, the technical area laboratories surrounded Ashley Pond (see cover photo). These buildings were removed by the mid-1960s.

POST OFFICE

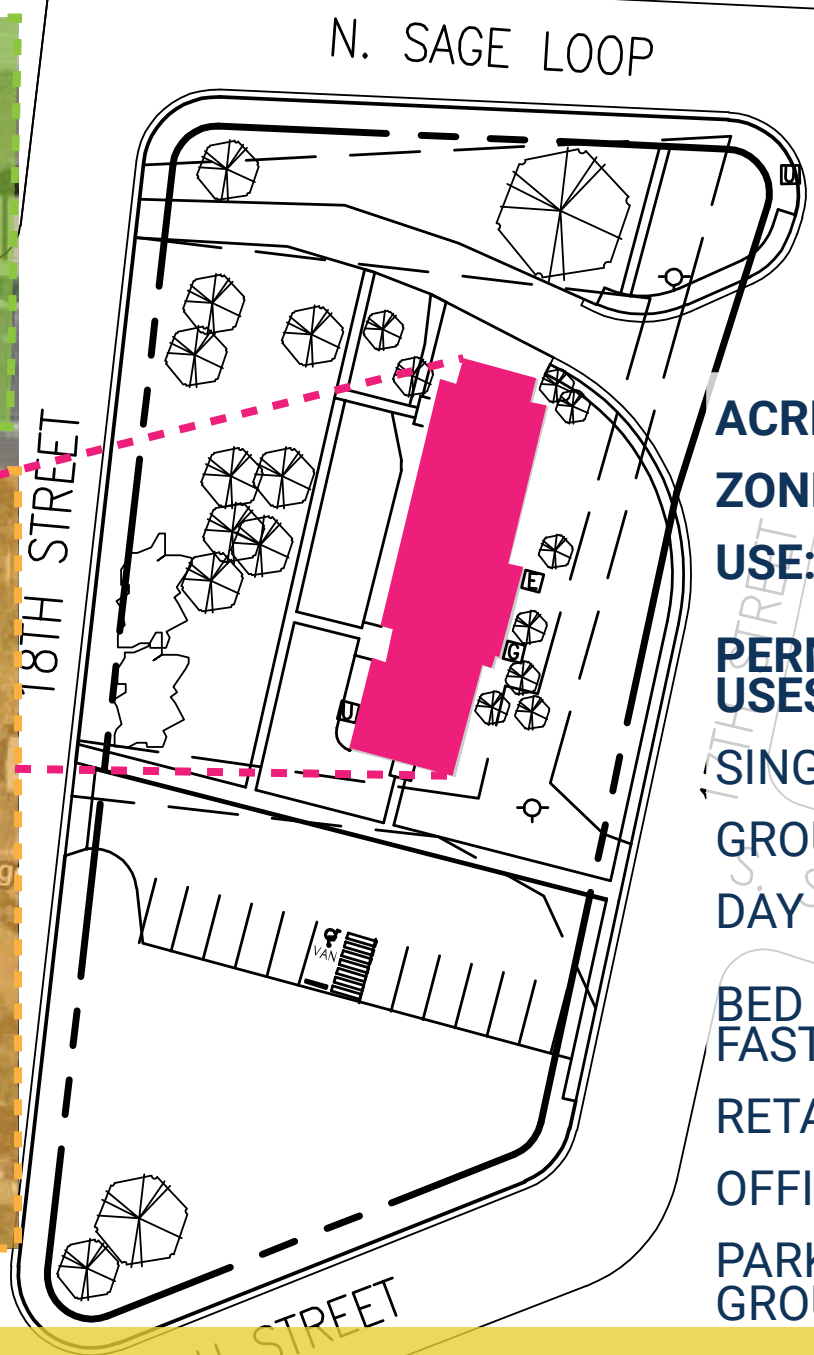
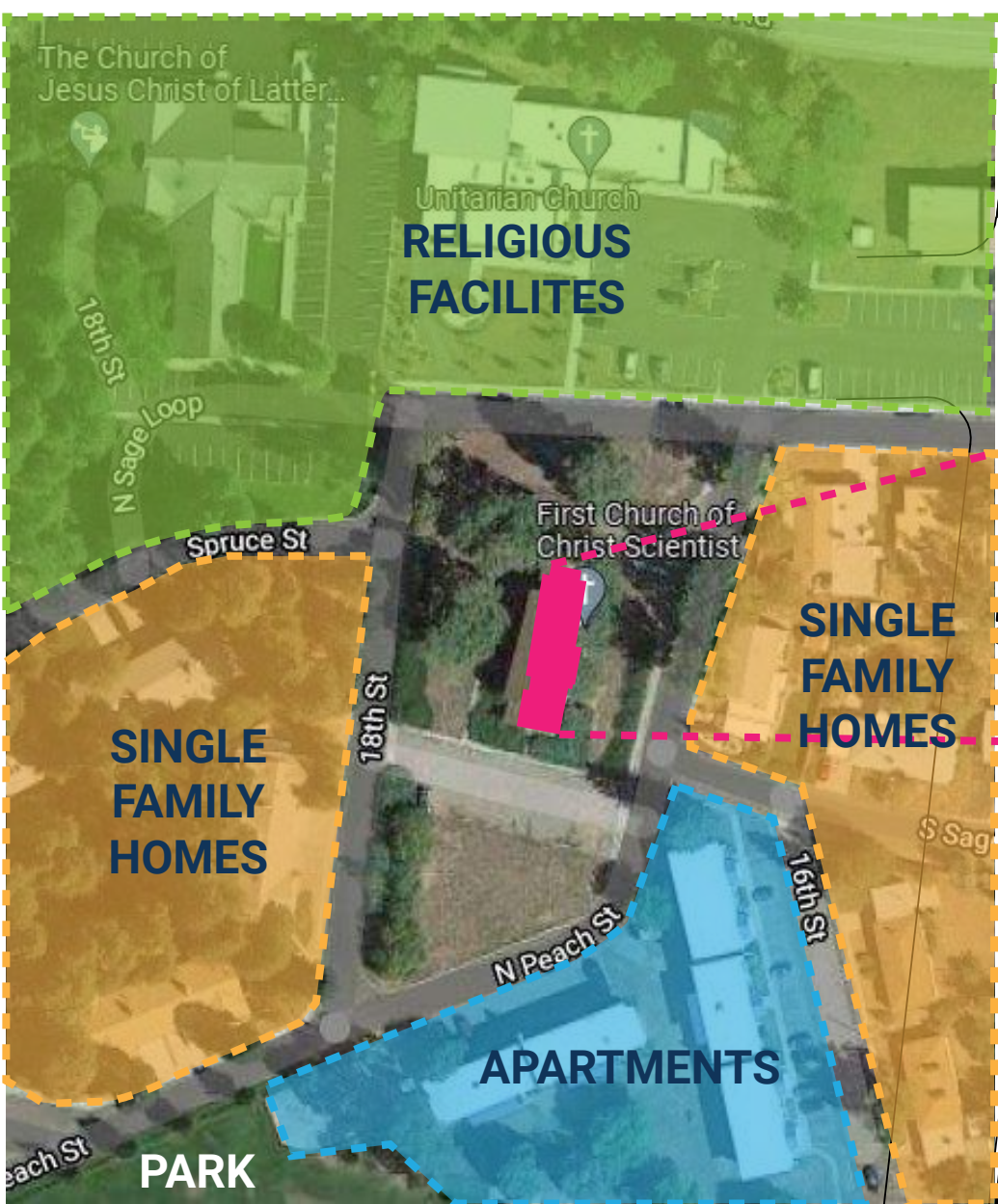
14 During WWII, mail to Los Alamos residents was simply addressed to P.O. Box 9662, Santa Fe, New Mexico. This Post Office, designed and built as part of the Community Center, opened at this location in 1948 on the site of the Ranch School Trading Post. Recently the Post Office was listed on the National Register of Historic Places.



Los Alamos County is investigating Historical Registration status for the W.A.C. Dorm, and expanding the park to include the building.

LAC Women's Army Corps Dormitory Historical Park Boundary

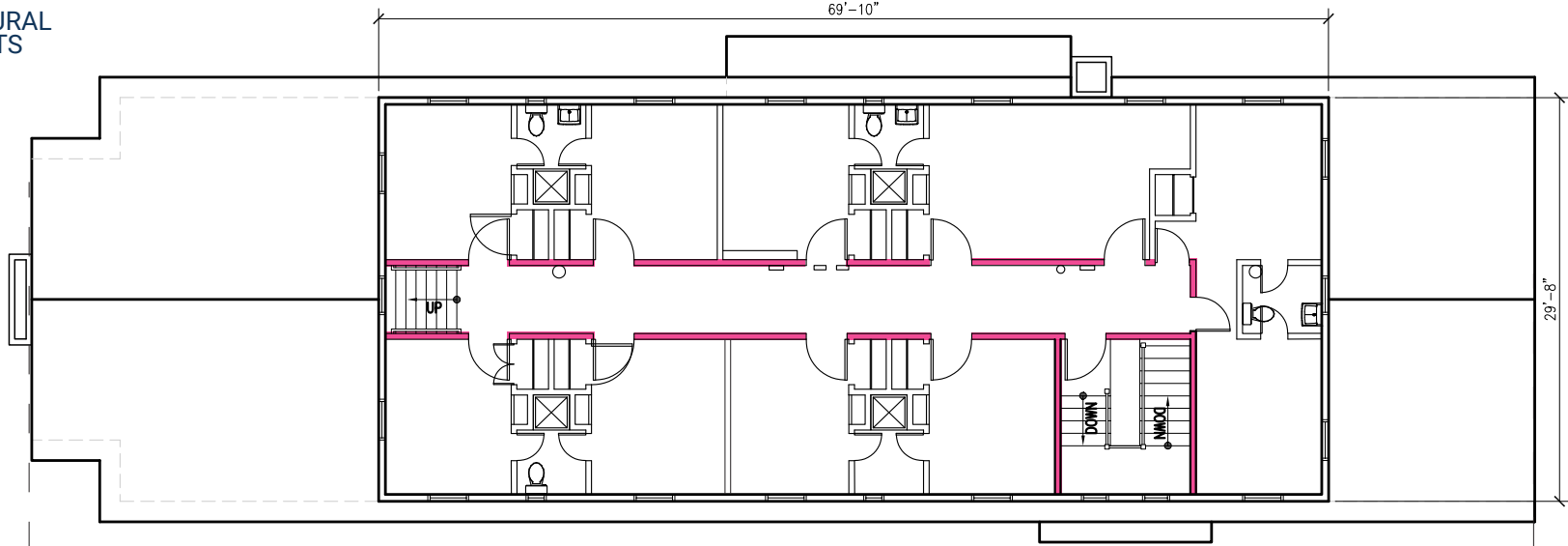
November 2021



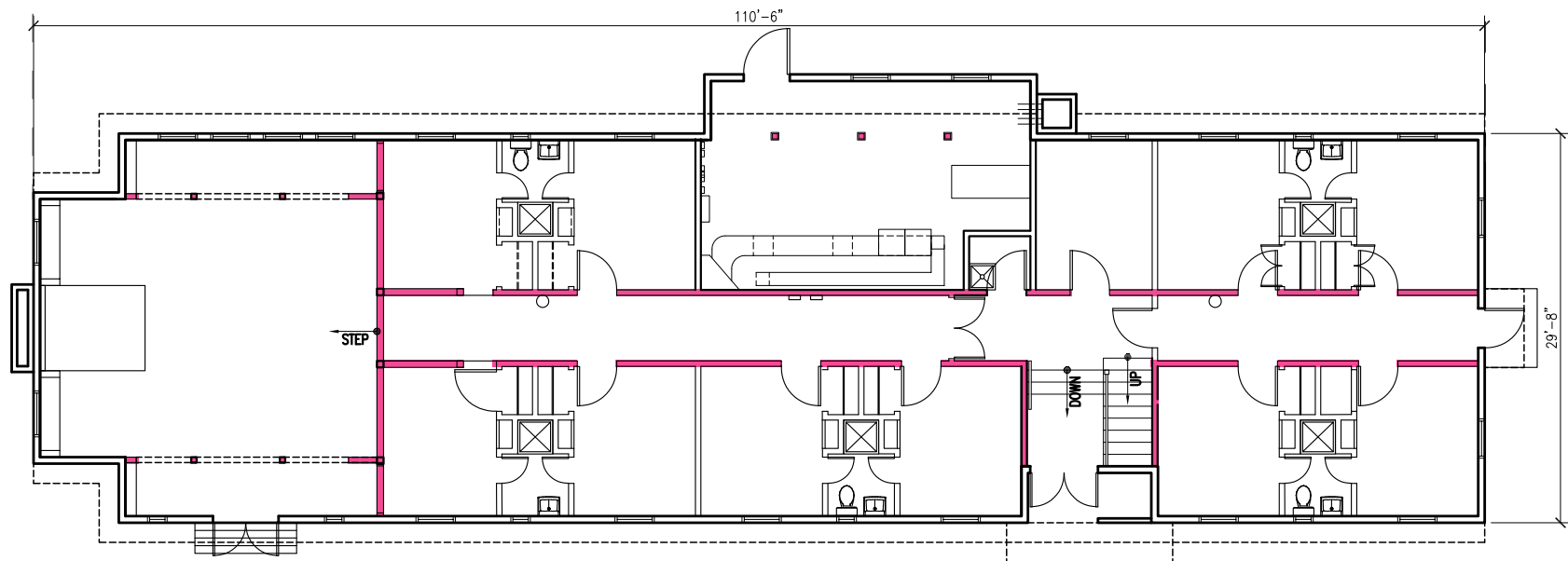
- ACRES:** 1.01
- ZONE:** R-1-8
- USE:** ASSEMBLY
- PERMISSIVE USES:**
 - SINGLE FAMILY
 - GROUP HOME
 - DAY CARE
 - BED & BREAK-FAST
 - RETAIL
 - OFFICES
 - PARKS & PLAY-GROUNDS

LAC Women's Army Corps Dormitory

Site Context



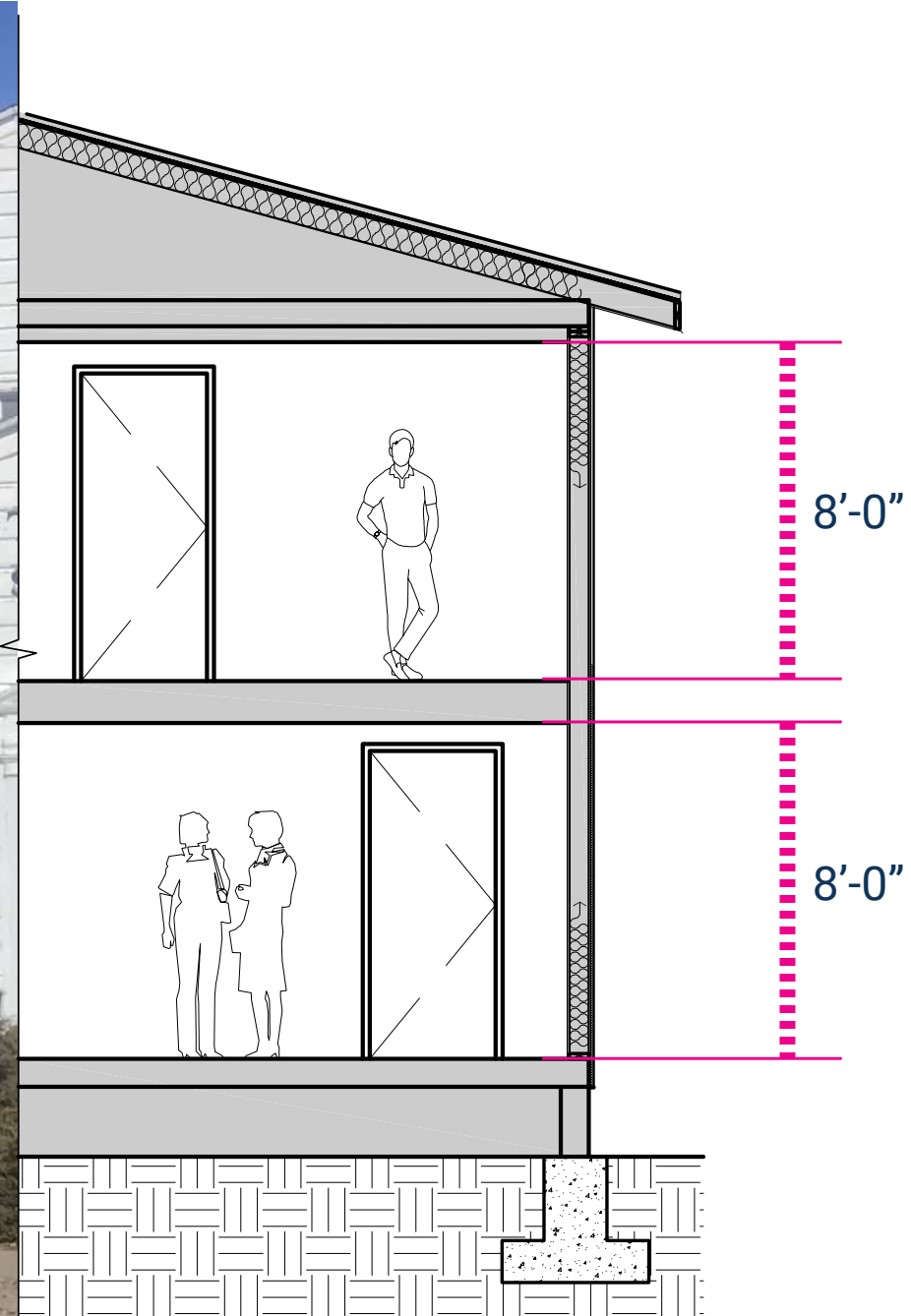
North Existing Second Floor 3,300 sf



North Existing First Floor 2,073 sf

LAC Women's Army Corps Dormitory

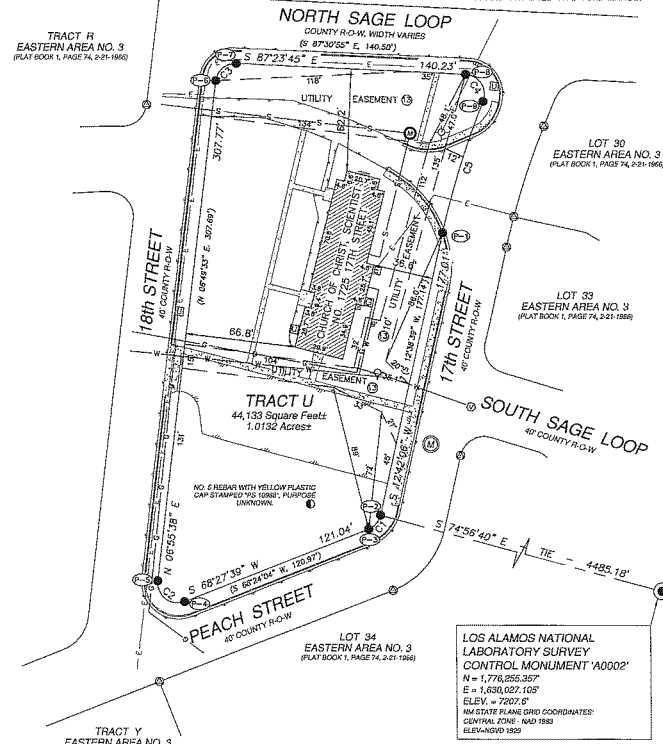
Floor Plans



LAC Women's Army Corps Dormitory

Building Section

November 2021



The Existing Building and Site Evaluation

2020 Building Analysis shall be updated, with additional focus upon:

STRUCTURE

Assessing existing structural members, calculating current loads and maximum loads to understand potential upgrades of modern day usage.

ENVELOPE + POTENTIAL IMPACTS OF CURRENT ENERGY CODE REQUIREMENTS

Identifying potential extents of renovation that would require upgrades per the International Energy Conservation code (IECC) 2015.

SITE + UTILITY ELEMENTS

Obtaining a topographic survey and in-depth utility information for the site.

LAC Women's Army Corps Dormitory

Existing Conditions

POTENTIAL BUILDING IMPROVEMENTS



NEW SEWER, WATER, & FIRE SUPPRESSION LINES

NEW ROOF

NEW PAINT

NEW MECHANICAL

NEW ELECTRICAL

NEW OR REHABILITATED WINDOWS/ STORM WINDOW

ADA ACCESSIBILITY (EXTENT DEPENDENT ON NEW USE)

POTENTIAL SITE IMPROVEMENTS



ADA ACCESSIBILITY: NEW SIDEWALKS AND RAMPS

NEW PARKING LOT

NEW 3 PHASE POWER

NEW SEWER, WATER, AND FIRE LINES

NEW LANDSCAPING AND IRRIGATION

LAC Women's Army Corps Dormitory

Potential Improvements

How would you like to
see the W.A.C. Dorm
used?

LAC Women's Army Corps Dormitory

Community Discussion & Input

Potential Use:

The Manhattan Project National Historical Park (MPNHP) is wanting to enhance the Park's presence in the Community and is interested in using part of the County-owned W.A.C. Dorm.

Visitors Center

For the National Parks Service/Manhattan Project National Historical Park
Current operating hours 10am-3pm Friday-Monday

- Offices
- Interior gathering space for exhibits and educational programs
- Exterior gathering space for exhibits and educational programs
- Bus parking
- Temporary lodging for seasonal Park Service employees
- Park Service Does not need to occupy the entire building

LAC Women's Army Corps Dormitory

Potential Uses



County of Los Alamos

Staff Report

December 01, 2021

Los Alamos, NM 87544
www.losalamosnm.us

Agenda No.: A.

Index (Council Goals):

Presenters: Tourism Implementation Task Force

Legislative File: 15194-21

Title

Consideration and Possible Action on County Use of Glyphosate

Recommended Action

I move that the Tourism Imp. Task Force [support / not support] the ESB's action on the County's pesticide use.

Or:

I move that the Tourism Imp. Task Force Chair and Staff Liaison send a letter to Council about their support / non-support of the ESB recommendation on the County's pesticide use.

Or:

I move that the Tourism Imp. Task Force take no action on this item.

Body

The Environmental Sustainability Board has been investigating the County use of pesticides-in particular, pesticides with glyphosate. The ESB heard a Pesticide presentation from Dina Pesenson at the September 16, 2021 ESB meeting and a presentation by County staff on pesticide use in the County at their October meeting. These presentations are shown in Attachment A and B.

The following action was taken by the Environmental Sustainability Board on October 21, 2021 (minutes in Attachment C):

A motion was made by Member Lui, seconded by Chair Loechell that ESB approve and recommend to County Council the amended motion.

1. Require pesticide application information (including area to be sprayed and product) to be posted in one designated County website location 72 hours in advance whenever possible or within 24 hours of each application and for at least six months after application including the Department of Agriculture Pesticide Application record for the particular application.
2. Stop use of any herbicide containing Glyphosate on County land.

3. Prioritize and support expansion of Integrative Pest Management efforts by relevant departments to continue to actively decrease the amount and frequency of chemical use on County land.

It was requested that the Tourism Imp. Task Force examine this issue from the tourism perspective and decide whether to support this ESB recommendation. Several possible actions are listed for the Task Force or another action could be considered.

Attachments

A - Pesticide Presentation (ESB)

B - Pesticide Use in Los Alamos County Presentation

C - Oct. 21, 2021 ESB Meeting Minutes

Pesticide uses and impacts in urban areas.

By Dina Pesenson
9/16/2021



Where pesticides are often used in urban communities:

- ☐ Parks and playgrounds (green areas, around bases of trees, chipped and rubber surfaces under play equipment)
- ☐ sports fields
- ☐ court/field/path edges/fencing
- ☐ along walking path edges and curbs
- ☐ rockscapes
- ☐ on easements near electric meters, poles, transformers etc. Along bus stops.
- ☐ On shoulders along roads, along edges of rivers and acequias.
- ☐ Neighbors' yards including driveways, lawns and rockscaping.



Typical pesticides and uses in urban areas.

- **RoundUp** or off brand formulations (active ingredients include *glyphosate*)
 - Kills all plants not engineered for it.
 - Common uses: rockscapes, wood/rubber chips covering playground areas below play equipment, along roads, edges of rivers/acequias, bike/walk paths, sidewalks, bases of fences, easements, meters, electric poles, etc.
 - Typically used year-round.
- **EndRun** (active ingredients include **2,4-D**, **Dicamba**)
 - Kills broadleaf plants like clover, dandelion and similar.
 - Common uses: sprayed on large areas ('boom sprayed') like public grassy areas, sport fields and lawns.
 - Typically applied in spring (April-June) and fall (Aug-October).

Concerns about glyphosate and Roundup.

- Glyphosate is a patented antibiotic (patent filed in 2003, granted in 2010).
- Glyphosate lowers vitamin D levels by suppressing CYP enzyme activity which activates vitamin D.
- Glyphosate is a sex specific endocrine disruptor with androgenic effects in humans.
- Glyphosate has been shown to severely impair adrenal hormone synthesis.
- Glyphosate and glyphosate-free Roundup products kill bees.
- Glyphosate is a patented chemical chelator (1964). It binds and removes important minerals such as calcium, magnesium, manganese, copper, and zinc.
- Glyphosate is an analog (mimic) of glycine, one of the most prevalent of the 20 amino acids that form the building blocks of life.

Concerns about 2,4-D (1940s Dow Chemical)

- 2, 4-D works by attacking both the roots and leaves of weeds by making the unwanted plant's cells grow out of control—sort of like inducing cancer in the plant to kill it or drastically slow its spread.
- Declared a possible human carcinogen in 2015 by the International Agency for Research on Cancer based on evidence that it damages human cells and, in a number of studies, caused cancer in laboratory animals.
- 2,4-D is an endocrine-disrupting chemical as it mimics/inhibits the body's hormones. Laboratory studies suggest that 2,4-D can impede the normal action of estrogen, androgen, and most conclusively, thyroid hormones.
- By the EPA's own measure, 2,4-D has already been detected in groundwater and surface water, as well as in drinking water.
- Ubiquitous - in 'weed and feed' products in lawns, parks, agriculture.

Concerns about Dicamba.

- Like glyphosate and Roundup, is linked to non-Hodgkins lymphoma (blood cancer originating in lymphatic system)
- Implicated in canine malignant lymphoma raising the risk by as much as 70% in some dogs.
- Toxic, used to not be allowed to be used on growing crops or even DURING growing season.
- New seeds that withstand dicamba were released before approval causing heavy crop damage and sickening farm workers by drifting of spray.
- Created in 1940s.

A couple of the myths of safe pesticides:

- “Rigorously Tested”
 - In 2010, US President’s Cancer Panel (USPCP) said “Only a few hundred of the more than 80,000 chemicals in use in the US have been tested for safety.” **(that’s well below 1%)**
- “Safe exposure limits”
 - In 2010 USPCP said “Some scientists maintain that current toxicity testing and exposure limit-setting methods fail to accurately represent the nature of human exposure to potentially harmful chemicals.”
 - Studies show that ‘safe’ doses of multiple chemicals do in fact cause detectable negative impact when combined (‘synergistic effect’ - effect is greater) yet data from studies of combinations is not considered when setting safe limits by our regulatory agencies.
 - Some compounds such as those that mimic/impact hormones are MORE toxic at a LOWER dose, so current safety level settings are not able to address those safely.

More recently on the myth of “rigorously tested”

The EPA pesticide office granted 972 industry requests to waive toxicity tests between December 2011 and May 2018, 89% of all requests made.

Among the tests on pesticides that were never performed were 90 percent of tests looking for developmental neurotoxicity, 92 percent of chronic cancer studies, and 97 percent of studies looking at how pesticides harm the immune system.

Glyphosate has been under scrutiny for its cancer-causing potential at the EPA since at least 1983 and yet its use has been allowed to skyrocket every year becoming the most widely used herbicide in the US.

Glyphosate is persistent and accumulating in our bodies and environment rapidly.

- Glyphosate has been found in all foods tested including baby foods, popular breakfast cereals, honey, sugar, vegetable oils and particularly high in oats, beans, buckwheat.
- Glyphosate has been found in most ground and rain water tested.
- A study published in JAMA in 2017 tracked people over the age of 50 in southern California from 1993-1996 to 2014-2016, with researchers periodically collecting urine samples during that time. Researchers found
 - the percentage of people who tested positive for glyphosate shot **up by 500%** in that time period.
 - The levels of glyphosate found also **spiked by 1208%** during that time.



US regulatory approach is reactionary, NOT precautionary.

US President's Cancer Panel stated in 2010: "The prevailing regulatory approach in the United States is reactionary in that it:

- Requires incontrovertible evidence of harm before preventative action is taken.
- Places the burden on the public to show that a given chemical is harmful.
- Does not consider potential health and environmental impacts when designing new technologies.
- Discourages public participation in decision making about the control of hazards and the introduction of new technologies, chemicals, or other exposures."

What can we do as individuals?

- Regularly contact local officials in charge of recreational space, parks, schools and public roads and waterways to let them know your concerns and provide latest relevant information since both governments and regulatory agencies are often woefully behind the scientific community.
- Speak to those seeking office about your concerns. Keep in mind, we all want the best for our health and environment but due to years of heavy PR it will take a paradigm shift for many folks to really understand the dangers and change their habits.
- Encourage local governments and entities like school districts to pass requirements to disallow use of these chemicals.
- Vote for politicians who are more likely to hold industry and regulatory agencies responsible.
- Buy organic whenever possible. Support local farmers.



If we die,
we're taking
you with us.

Questions?

Pesticide Use in LAC

Pesticide types, users, and impacts for LAC

By: Cory Styron and Dianne Marquez,
Community Services Department

October 21, 2021



Key ideas

- Pesticide types
 - Pesticide regulation
- Applicators
 - Types and training
- Herbicides
- Impacts

Pesticides

Pesticide is any substance used to kill, repel or control certain forms of plant or animal life that are considered to be pest.

- Insecticides controls insects
- Fungicides prevent growth of mold and mildew
- Rodenticides controls rodents
- Herbicides controls or prevents weeds and grasses

Pesticide Regulations

Federal- Environmental Protection Agency (EPA)

- License and registration number

- Label direction and information

- Testing

- Safety Data sheets

State-NM Department of Agriculture

- License and registration

- Sets requirements for use

- Training for applicators

Applicators

NMDA License

- Commercial Applicator

- Commercial Operator/Technicians

- Private Applicators

- Public Applicators

- Noncommercial Applicators (restricted use)

- Pest Management Consultant (restricted use)

- Pesticide Dealers

11 subcategories

4 CEUS per year in order to maintain the license

Herbicides

Approved for label use by EPA

Horticulture

Agriculture

Approved for label use by NMDA

Horticulture

Agriculture

Non-selective herbicide that provides systemic control of weeds and grasses

Can be used by everyone with or without training

Herbicide Uses

Clean turf for sports

- Sports fields

- Golf course

Hard to maintain areas

- Rights of Way

- Concrete cracks and crevices

- Vegetation management

Impacts

Sports

- Turf sports injuries to players

- Performance

Hard to maintain areas

- Safety of staff

- Frequency of maintenance (additional cost)

- Staff efficiency

Isopropylamine salt of glyphosate

Approved for label use by EPA

- Horticulture

- Agriculture

Approved for label use by NMDA

- Horticulture

- Agriculture

Non-selective herbicide that provides systemic control of weeds and grasses

Major concern is agriculture application

Degrades relatively rapidly



Questions





County of Los Alamos

1000 Central Avenue
Los Alamos, NM 87544

Minutes

Environmental Sustainability Board

Erik Loechell, Chair: Dina Pesenson, Vice-Chair; Hermann Geppert; Makayla Lui; Amanda MacDonald; and Wendy Staples, Members

Thursday, October 21, 2021

5:30 PM

1000 Central Avenue, Council Chambers

NOTE: This meeting is in person and open to the public. However, for convenience, the following Zoom meeting link and/or telephone call in numbers may be used for public viewing and participation.

Please click the link below to join the webinar:

[https://us02web.zoom.us/j/81836612698?](https://us02web.zoom.us/j/81836612698?pwd=SVI0bFpPU3J2cTIMUkVwZTdqL3hnQT09)

[pwd=SVI0bFpPU3J2cTIMUkVwZTdqL3hnQT09](https://us02web.zoom.us/j/81836612698?pwd=SVI0bFpPU3J2cTIMUkVwZTdqL3hnQT09)

Passcode: Recycle

Or iPhone one-tap:

+16699006833,,81836612698#,,,,*8719285# US (San Jose)

+12532158782,,81836612698#,,,,*8719285# US (Tacoma)

Or join by phone:

Dial(for higher quality, dial a number based on your current location):

US: +1 669 900 6833 or +1 253 215 8782 or +1 346 248 7799 or +1 929
205 6099 or +1 301 715 8592 or +1 312 626 6799

Webinar ID: 818 3661 2698

Passcode: 8719285

International numbers available: <https://us02web.zoom.us/u/kcoBSFuE3Z>

1. CALL TO ORDER - ROLL CALL

Chair, Eric Loechell, called the meeting to order at 5:41 pm. The following members were in attendance.

Present: Chair Loechell, Vice-Chair Pesenson, Member Lui, Member MacDonald, Member Staples.

Absent: Member Geppert

2. PUBLIC COMMENT

None

3. APPROVAL OF AGENDA

A motion was made by Member Lui, seconded by Vice-Chair Pesenson, that the agenda be approved as presented,

The motion passed unanimously.

4. APPROVAL OF MINUTES

[15040-21](#) Approval of the September 16, 2021, Environmental Sustainability Board Minutes

Presenters: Erik Loechell

Attachments: [A - Draft ESB Minutes September 16, 2021](#)

A motion was made by Vice-Chair Pesenson, seconded by Member Lui, that the September 16, 2021 minutes be approved as presented.

The motion passed unanimously.

5. BOARD BUSINESS

[15044-21](#) Bee City Presentation by Alesia Benson

Presenters: Erik Loechell

The ESB received a presentation from Alesia Benson on the Bee City USA program. Bee City USA is a program engaging communities on ongoing dialogue to protect and establish urban/suburban habitats that support pollinators.

Vice Chair Pesenson and Member Staples asked if it was difficult to provide native plants that are free of chemicals and pesticides.

Public Comment:

Dorothy Brown commented that Kaitlin Haase is the Bee City Santa Fe contact person. Honey bee keeping is allowed in Los Alamos.

Member Staples asked to discuss this further at the next ESB meeting.

[15042-21](#) Pesticide Use in Los Alamos County

Presenters: Erik Loechell

Attachments: [B – Pesticide Use in Los Alamos County Presentation](#)

The ESB received a presentation from Community Services Department Director Cory Styron on pesticide use by Los Alamos County. Traffic and Streets Manager, Juan Rael, added information on how Traffic and Streets uses herbicide.

Public Comment:

Jody Benson commented that other counties and cities in the US have banned the use of Glyphosate and use a systems approach in maintaining a landscape. She thinks the environmental and health benefits will outweigh the costs.

Jessie Emerson commented that she has been a nurse for 57 years and has seen increases in Parkinson's and other neurological diseases as well as diabetes and cancer. She asked what is more expensive, the systems approach or taking care of the ill. Bee City USA is incompatible with pesticides.

Aaron Walker commented that if there is a requirement to notify the public 72 hours in advance it shows that Glyphosate is health hazard.

Katie Leonard commented that she is in support of banning Glyphosate.

The ESB asked Mr. Styron questions and commented on his presentation.

15043-21**Consideration of Glyphosate Ban on County Land**

Presenters: Erik Loechell and Dina Pesenson

The ESB received approximately 40 public comments on the recommendation to ban Glyphosate use on County Land. The majority of comments were in favor of banning Glyphosate.

Public comment:

Sue Barns commented that she supports the recommendation.

Aaron Walker commented that Glyphosate has been shown to be a potential serious health hazard.

David Hanson commented has concerns about people and pets picking up goat heads and being injured. He also has concerns about persons with asthma as well as the cost of dealing with weeds.

Erin Green commented that she supports the recommendation.

The ESB then discussed language of the motion.

A motion was made by Member Lui, seconded by Chair Loechell that ESB approve and recommend to County Council the amended motion.

- 1. Require pesticide application information (including area to be sprayed and product) to be posted in one designated County website location 72 hours in advance whenever possible or within 24 hours of each application and for at least six months after application including the Department of Agriculture Pesticide Application record for the particular application.**
- 2. Stop use of any herbicide containing Glyphosate on County land.**
- 3. Prioritize and support expansion of Integrative Pest Management efforts by relevant departments to continue to actively decrease the amount and frequency of chemical use on County land.**

The motion passed unanimously.

6. REPORTS**A. Chair's Report - Erik Loechell**

None.

B. Board Member Reports**C. Los Alamos Resiliency Energy and Sustainability Task Force - Dina Pesenson**

Staff Liaison Angelica Gurule reported that LARES is busy seeking County staff input regarding their recommendations to reduce Greenhouse Gas emissions. They have a town hall meeting planned for Wednesday, October 27, 2021 that was originally scheduled for in person at Fuller Lodge but due to COVID it was moved to a virtual format. The final report will be presented to County Council in January or February 2022.

1). **Board of Public Utilities - Erik Loechell**

None

2). **Planning and Zoning Commission - Vacant**

Vacant

3). **Transportation Board - Vacant**

Vacant

4). **Parks and Recreation Board - Dina Pesenson**

Vice Chair Pesenson reported that the Parks and Recreation Board received a presentation on the work being done on the Golf Course. The board also received updates on the BMX track progress.

5). **Community Development Advisory Board - Vacant**

Vacant

6). **County Council Liaison - Sean Williams**

Councilor Williams reported that the County Council discussed the Downtown Master Plan, a grant opportunity for design for a recreation center in White Rock, and proclaimed October "The Peoples Eco Challenge Month." They also received a presentation on module one of chapter 16 of the development code for Planning and Zoning. The Council approved zoning for cannabis manufacturing in Los Alamos. Assistant County Manager Anne Laurent presented on the use of LED street lights within Los Alamos County.

D. Team Reports

Staff Liaison Angelica Gurule reported that future ESB meeting will return to virtual only per County Council Direction.

1). **Los Alamos Public Schools Team Subcommittee - Angelica Gurule**

Staff Liaison Angelica Gurule reported that the Los Alamos Schools Subcommittee has not met since the start of the COVID pandemic but they are hoping to meet again once a new schools superintendent is appointed. In the interim Environmental Services is sending information to the schools and teachers such as carbon calculators and other environmental sustainability teaching tools. A date for the Recycle Art Fair and Fashion Show was selected, April 20, 2022 at Chamisa Elementary School.

2). **Zero Waste Los Alamos - Angelica Gurule**

Staff Liaison Angelica Gurule reported that the Zero Waste Team cancelled its booth at the farmers market due to increasing COVID numbers. The team instead met to work on articles for the local media. They are planning to partner with the Los Alamos Department of Public Utilities for the Water Festival in the spring of 2022. The County received a grant to purchase three water bottle filling station to be installed in high use parks as well as funds to purchase water bottles and backyard compost kits.

7. STAFF REPORT

[15041-21](#) September 2021 Residential Sustainability Report

Presenters: Angelica Gurule

Attachments: [C - Residential Sustainability Report - September 2021](#)

The ESB reviewed the September Residential Sustainability Report. The Diversion rate for September was 25% which is a decrease from last year, this is likely due to people returning to working on site. With the introduction of the yard trimming program we are able to divert more of our waste. Environmental Services is still receiving requests for yard trimming carts which helps with diversion.

8. PREVIEW OF UPCOMING AGENDA ITEMS

1. Food composting briefing
2. Discuss Bee City USA
- 3 Liaison assignments
4. LARES Presentation from Katie Leonard
5. Discuss possible revisiting a ban on single use plastic bags

9. ADJOURNMENT

A motion was made by Vice-Chair Pesenson, Seconded by Chair Loechell, that the meeting be adjourned. With no objections the meeting adjourned at 9:00 pm.

If you are an individual with a disability who is in need of a reader, amplifier, qualified sign language interpreter, or any other form of auxiliary aid or service to attend or participate in the hearing or meeting, please contact the County Human Resources Division at 662-8040 at least one week prior to the meeting or as soon as possible. Public documents, including the agenda and minutes can be provided in various accessible formats. Please contact the personnel in the Community Services Administration Office at 662-8163 if a summary or other type of accessible format is needed.



County of Los Alamos

Staff Report

December 01, 2021

Los Alamos, NM 87544
www.losalamosnm.us

Agenda No.: A.

Index (Council Goals):

Presenters: Linda Matteson, Deputy County Manager

Legislative File: 15192-21

Title

Consideration of 2022 Meeting Calendar

Recommended Action

I move that the Task Force approve the 2022 Meeting Calendar shown in Attachment A.

Body

The annual meeting calendar for the Tourism Implementation Task Force is approved each year. The proposed meeting calendar is shown in Attachment A and maintains the meeting date at the first Wednesday of the month.

Attachments

A - Proposed 2022 Meeting Calendar

2022 Meeting Calendar
For
Tourism Implementation Task Force

*Meetings to be held on the following dates at
Noon:*

January 5, 2022

February 2, 2022

March 2, 2022

April 6, 2022

May 4, 2022

June 1, 2022

July 6, 2022

August 3, 2022

September 7, 2022

October 5, 2022

November 2, 2022

December 7, 2022