



LOS ALAMOS

# County of Los Alamos

1000 Central Avenue  
Los Alamos, NM 87544

## BCC Agenda - Final

### Lodgers' Tax Advisory Board

---

Tuesday, January 23, 2024

12:00 PM

1000 Central Avenue, Room 110

---

#### Special Meeting

**NOTE:** This meeting is in person and open to the public. However, for convenience, the following Zoom meeting link and/or telephone call in numbers may be used for public viewing and participation:

<https://us06web.zoom.us/j/85072848071>

**Or Telephone:**

Dial(for higher quality, dial a number based on your current location):

US: +1 253 215 8782 or +1 346 248 7799 or +1 669 900 6833 or +1 301 715  
8592 or +1 312 626 6799 or +1 929 205 6099

Webinar ID: 850-7284-8071

#### I. ADMINISTRATIVE ACTIONS

*a. Call to Order/Introductions*

*b. Approval of Today's Agenda*

*c. Review/Approval of Meeting Minutes*

[18258-24](#)

Minutes from the Lodgers' Tax Advisory Board Meeting on  
December 19, 2023

**Attachments:**

[Minutes\\_19Dec2024](#)

*d. Public Comment for Items Not on the Agenda*

#### II. PRESENTATIONS/DISCUSSIONS

*None*

#### III. NEW AND PENDING ITEMS/PROJECTS FOR POSSIBLE ACTION

**a. Sunny 505 Report**

[18247-24](#) Sunny 505 Report

**Presenters:** Daniel Ungerleider

**Attachments:** [A - Sunny 505 report](#)

**b. LACDC Visitor Centers Report, Melanie Peña****c. Project Update - White Rock Visitor Center Outdoor Restrooms and Pavilion project**

[18248-24](#) White Rock Visitors Center Shelter Update

**Presenters:** Daniel Ungerleider

**Attachments:** [B - WRVC Shelter LTAB Update](#)

**d. 2025 Work Plan and Discussion**

[18250-24](#) FY25 Budget Introduction and Discussion

**Presenters:** Daniel Ungerleider

**Attachments:** [E Lodger Tax Revenues](#)

**e. FY25 Budget Introduction and Discussion**

[18259-24](#) Lodgers' Tax Advisory Board Meeting dates for 2024

**Presenters:** Daniel Ungerleider

**Attachments:** [2024 EDD Meeting Calendar](#)

**IV. Other Reports - Discuss as needed****V. NEXT MEETING(S)/FUTURE AGENDA ITEMS****VI. ADJOURN**

*If you are an individual with a disability who is in need of a reader, amplifier, qualified sign language interpreter, or any other form of auxiliary aid or service to attend or participate in the hearing or meeting, please contact the County Human Resources Division at 662-8040 at least one week prior to the meeting or as soon as possible. Public documents, including the agenda and minutes can be provided in various accessible formats. Please contact the personnel in the Economic Development Department at 662-8087 if a summary or other type of accessible format is needed.*



# County of Los Alamos

## Staff Report

January 23, 2024

Los Alamos, NM 87544  
www.losalamosnm.us

---

**Agenda No.:**

**Index (Council Goals):**

**Presenters:**

**Legislative File:** 18258-24

---

**Title**

Minutes from the Lodgers' Tax Advisory Board Meeting on December 19, 2023

**Recommended Action**

**I move that the Board approve the Minutes for December 19, 2023**

**Attachments**

A - Draft Minutes for December 19, 2023



# County of Los Alamos

## Minutes

### Lodgers' Tax Advisory Board

1000 Central Avenue  
Los Alamos, NM 87544

*Jennifer Olsen, Chair; Matthew Allen, Vice-Chair; Jennifer Jenson; Trevor Shuman, and  
Michael Wheeler, Members.*

---

Tuesday, December 19, 2023

12:00 PM

1000 Central Avenue, Room 110

---

#### Joint Meeting with LTAB & TITF

NOTE: This meeting is in person and open to the public. However, for convenience, the following Zoom meeting link and/or telephone call in numbers may be used for public viewing and participation:

<https://us06web.zoom.us/j/85072848071>

#### 1) ADMINISTRATIVE ACTIONS

##### a) Call to Order/Introductions

**Present 4 - Board Member Allen, Board Member Olsen, Board Member Wheeler and Board Member Shuman**

**Absent 1 - Board Member Jenson**

- i. Lodgers' Tax Advisory Board / Tourism Implementation Task Force Rosters

##### b) Approval of Today's Agenda

##### c) Review/Approval of Meeting Minutes

- i. Minutes from the Lodgers' Tax Advisory Board Meeting on September 19, 2023.

**Member Allen move that the Board approve the Minutes for September 19, 2023.  
Motion passed unanimously.**

##### d) Public Comment for Items Not on the Agenda

#### 2) PRESENTATIONS/DISCUSSIONS

##### a) Code of Conduct Training, Larissa Breen, LAC Assistant Attorney

- i. Ethics Presentation, Larissa Breen, Assistant County Attorney

Larissa Breen, Associate County Attorney presented Los Alamos County's Ethics policy to the Board.

**3) REPORTS****a) Marketing and Tourism Update, Joanie Griffin, Sunny 505****i. FY2023 Wrap-Up Report**

Sunny 505 presented the data from the past month. Dana, from the Holiday Inn, wanted to see more specific data based on recreational events that were happening in the County. Councilor Ryti asked if Bandelier can be broken out as visitation / recreational data and if children under 16 are tracked in the data.

**ii. FY2024 Tourism Marketing Plan****iii. LTAB Report**

Leslie reported on each item that was changed at the White Rock Visitors' Center in the recent refresh that came in under budget.

**b) Los Alamos Commerce and Development Corp. Update (LACDC)****i. Visitation Reports from LACDC, Melanie Pena****ii. White Rock Refresh, Leslie Bucklin, LAC****iii. Project Oppenheimer, Lauren McDaniel, LACDC****c) Ambassador Program Update, Lauren McDaniel, LACDC****d) Lodgers Tax Data, Dan Ungerleider, LAC****i. Lodgers Tax Data****4) NEXT MEETING(S)/FUTURE AGENDA ITEMS****a) 2024 Calendar for approval****i. 2024 LTAB Meeting Calendar.**

**Member Matthew moved that the Board approve the 2024 LTAB TITF Meeting Calendar. Motion passed unanimously.**

**ii. 2024 TITF Meeting Calendar.**

**I move that the Board approve the 2024 TITF Meeting Calendar.**

**5) ADJOURN**

*If you are an individual with a disability who is in need of a reader, amplifier, qualified sign language interpreter, or any other form of auxiliary aid or service to attend or participate in the hearing or meeting, please contact the County Human Resources Division at 662-8040 at least one week prior to the meeting or as soon as possible. Public documents, including the agenda and minutes can be provided in various accessible formats. Please contact the personnel in the Economic Development Department at 662-8087 if a summary or other type of accessible format is needed.*



# County of Los Alamos

## Staff Report

January 23, 2024

Los Alamos, NM 87544  
www.losalamosnm.us

---

**Agenda No.:**

**Index (Council Goals):**

**Presenters:** Daniel Ungerleider, Economic Development Administrator

**Legislative File:** 18247-24

---

**Title**

Sunny 505 Report

**Attachments**

A Sunny 505 report



## **January 2024 LTAB Report Overview (Stats and Reporting as of January 9, 2024)**

### **Social Media**

The Facebook page audience has 15,350 followers. Content reached 3,063 users and garnered 396 engagements.

Since the last report, the Instagram account has grown to 1,063 followers. Content reached 669 users and garnered 106 engagements.

For November/December, top content included:

Breweries

Los Alamos Co-Op

Bandelier

Ice Skating

### **Public Relations**

In late 2023, Sunny505 distributed a news release on WinterFest, ice skating and winter activities in Los Alamos. Since the last report, Sunny505 has distributed a news release promoting Los Alamos as a ski family getaway. Pitches are ongoing.

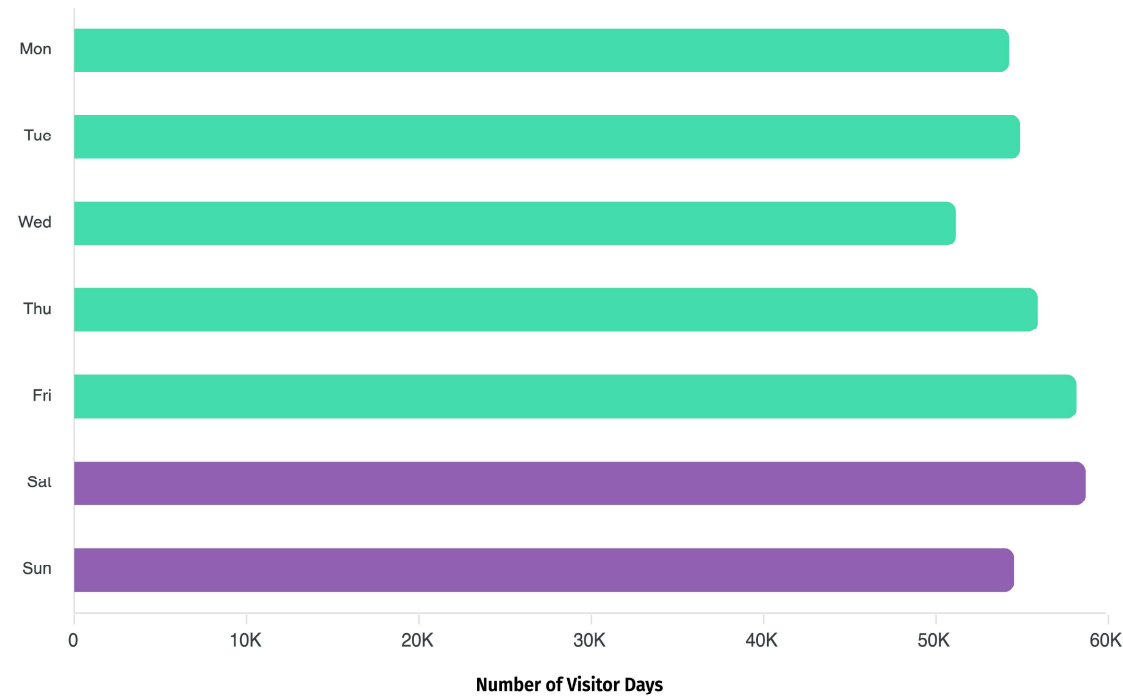
### **Other**

We've begun planning for spring/summer/fall advertising and gearing up for FY25 New Mexico True Cooperative Advertising grant.



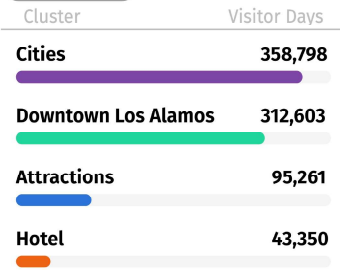
Visitor by Day

Geo Data



Cluster Visitation

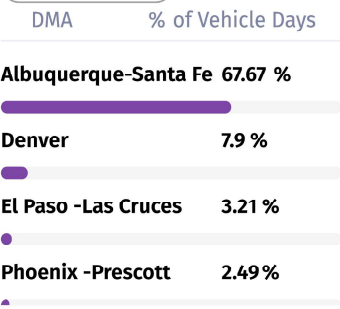
Geo Data



DMA Vehicle

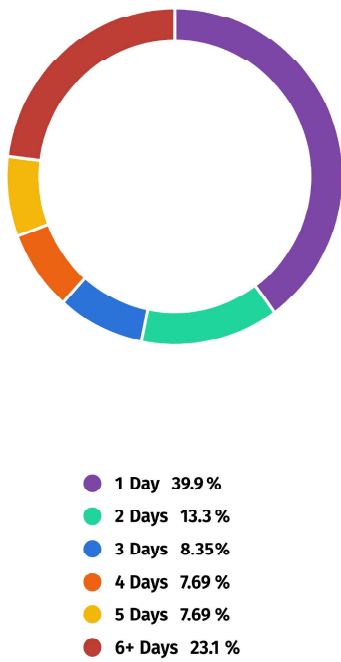
Visitation

Vehicle Data



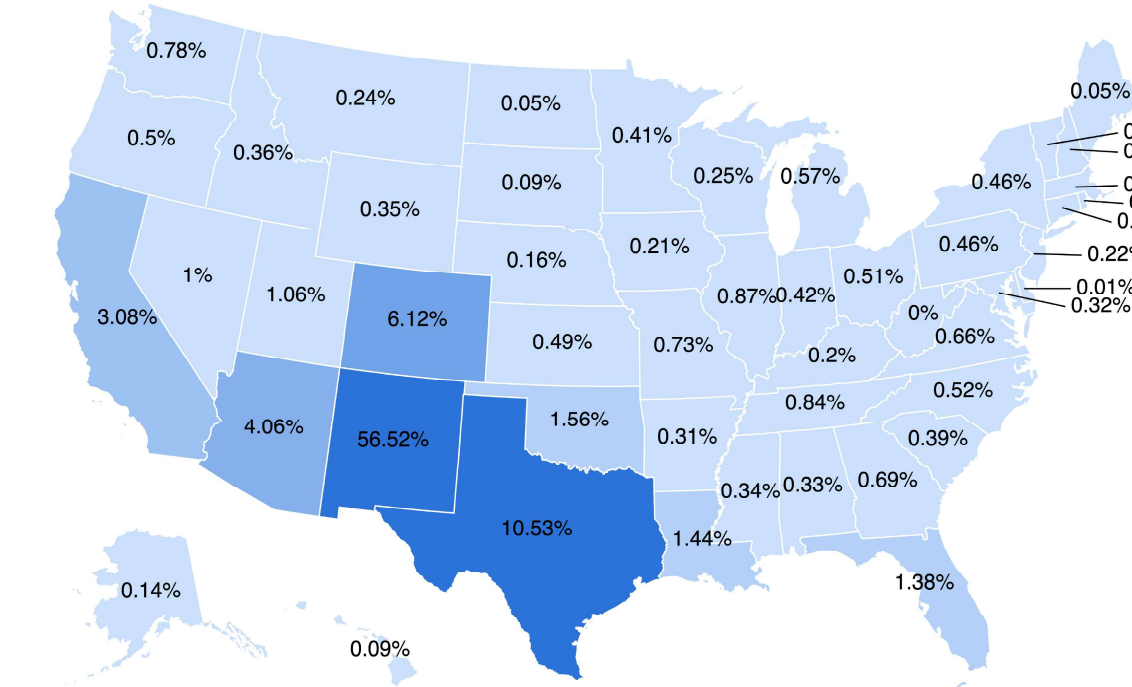
Visitor Days by Length of Stay

Geo Data



Share of Trips by State

Geo Data



January LTAB

Global Filters   In-State   Out-of-State   Distance: 50 mi - 3,323 mi   Dates: 7 / 1 / 23 - 11 / 11 / 23   Clusters: Los Alamos Lab Excluded   POIs: All Included

Data Source Filters

Geo Data

07 / 01 / 2023 - 11 / 11 / 2023   Clusters: Los Alamos Lab Excluded   POIs: All Included

Vehicle Data

01 / 01 / 2022 - 05 / 31 / 2023   Duration: All Included   Parking Distance: All Included   Clusters: All Included   POIs: All Included

## Glossary

---

### General Definitions

**Distance Filter:** Calculated as the distance between the center point of a POI and the center point of a device's Home Zip Code. This is a dynamic filter that allows real-time adjustments and flexibility to segment Unique Visitors, Visitor Days, and Trips based on the distance between the home location, and the POI. The distance filter is calculated as flight distance, not driving distance.

**Home Zip Code:** The inferred home zip code of observed devices. This is determined by a history of observations and patterns of behavior. Our database includes home zip codes for more than 200 million devices. Home Zip Codes are updated monthly based on the historical pattern of behavior and our process is capable of determining when someone moves to a new zip code.

**Percent Change:** Percent change is the percentage difference between two values, representing the relative increase or decrease. A positive percent change indicates an increase, while a negative percent change indicates a decrease. This calculation is used on a variety of comparable metrics, such as Percent Change of Trips, Percent Change of Unique Visitors, and Percent Change of Visitor Days. For example, if a destination saw an increase from 100 trips to 125 trips, then the Percent Change in Trips would result in a 20% increase.

### Geolocation Data Definitions

**Point of Interest (POI):** A physical boundary drawn on a map and utilized to capture mobile device activity with the boundary.

**Cluster:** A grouping of Points of Interest (POIs) based on venue type, visit purpose, etc.

**Locals vs. Visitors:** An estimate of the number of unique visitors to a given POI or cluster of POIs that factors a customizable distance split. 'Locals' are typically measured within a radius of 0 miles - 50 miles or a custom maximum distance point set by the user. All devices that consistently originate from within the defined radius will be displayed as a local within the data. Those non-locals tracked outside of this radius will be considered 'Visitors'.

**Repeat vs One-Time Visitor:** Based on observations of unique devices and then our estimate algorithm is applied. Once a device is observed a second time at any of the selected devices across the date range in the filters, then that device is "flagged" as a repeat visitor. This analysis is dynamic and can span multiple years. For example, if a visitor visits in March 2020, they would contribute to the visitors within the date range covering March 2020. If that visitor returns and visits again in September of 2021 and the date range in the filters spans March 2020 through September 2021, then that visitor shifts from a one-time visitor to a repeat visitor for all of the observations. Therefore, now this visitor would contribute to the numbers in both March and September and any subsequent visits.

**Share of Trips:** The relative presence of a particular market represented by a percentage which takes its individual trips compared to the total number of trips. For example if a specific location tracked 20 unique visitors out of a total of 80 trips, then that location witnessed a 25% share of trips.

**Share of Unique Visitors:** The relative presence of a particular market represented by a percentage which takes its individual unique visitors compared to the total number of unique visitors. For example if a specific location tracked 20 unique visitors out of a total of 80 unique visitors, then that location witnessed a 25% share of unique visitors.

**Share of Visitor Days:** The relative presence of a particular market represented by a percentage which takes its individual visitor days compared to the total number of visitor days. For example if a specific location tracked 20 visitor days out of a total of 80 visitor days, then that location witnessed a 25% share of visitor days.

**Trips:** The number of distinct trips to a destination by a Unique Visitor or POI. Utilizes a combination of observation patterns, distance traveled, etc. For example, if a Unique Visitor visits on Thursday through Sunday, that would be considered one single trip. If the visitor returns later that month, it would be counted as a second trip.

**Trip Length:** The number of distinct trips to a destination by a Unique Visitor or POI. Utilizes a combination of observation patterns, distance traveled, etc. For example, if a Unique Visitor visits on Thursday through Sunday, that would be considered one single trip. If the visitor returns later that month, it would be counted as a second trip.

**Unique Device:** A unique mobile device determined by unique identifiers.

**Unique Visitor:** An estimate of the number of visitors to a given POI or cluster of POIs that factors in logic for Trips. For example, if one visitor visited the same attraction three days in a row, they would count as three Visitor Days, but only one Unique Visitor. If that same visitor returned one month later and was observed at that same attraction for three more days in a row, then the cumulative results would be 6 Visitor Days, 2 Unique Visitors, and 2 Trips.

**Visitor Days:** An estimate of the number of daily visitors to a given POI or cluster of POIs based on our proprietary volume estimate methodology. The Visitor Days calculation uses unique device identifiers as a baseline and a daily estimate is generated factoring in many points of data including year-over-year changes in mobile device data availability, device behavior, local factors, unique POI characteristics, etc.. The daily estimate is added up for whichever date range is selected by the filters.

### Vehicle Data Definitions

**Average Distance Traveled:** The distance a vehicle has traveled from its home location to the destination.

**Distance by Dwell Time:** An average of how long a vehicle was in a cluster.

**Duration:** How long the vehicle was parked on average at a given location. The duration filter could, for example, be used to determine overnight stays at hotels by only selecting 'more than 6 hours.'

**Parking Distance:** On average, how close the vehicles were parked to the point of interest. The closer a vehicle is parked to a point of interest, the higher the confidence is that these vehicles were truly associated with this point of interest.

## Glossary

---

- Peak Visitation - Day & Time:** An average of hourly visitation for each day of the week throughout your selected time frame such as the average visitation for 1pm on Saturdays.
- Peak Visitation - Month & Day:** An average of visitation for days of the week in each month, such as the average Thursday visitation for the month of May.
- Vehicle Trip Length:** How long (in days) vehicles were observed in the destination.



## December 2023–January 2024 Report

### Earned Media

#### Public Relations

News Headline	Outlet Name	News Circulation	Audience	News Ad Value	PR Value	URL	Date
18 Best Places to Visit in New Mexico, According to Locals	News Pub	1,821		\$16.89	\$50.67	https://ne	1-Jan
18 Best Places to Visit in New Mexico, According to Locals	Travel + Leisure	10,695,384		\$99,199.69	\$297,599.06	https://wv	1-Jan
18 Best Places to Visit in New Mexico, According to Locals	Yahoo! Lifestyle	9,641,815		\$89,427.83	\$268,283.50	https://wv	1-Jan
18 Best Places to Visit in New Mexico, According to Locals	Yahoo Style Singapore	672,374		\$6,236.27	\$18,708.81	https://sg	1-Jan
18 Best Places to Visit in New Mexico, According to Locals	Verified News Explorer Network	68,943		\$639.45	\$1,918.34	https://vni	1-Jan
18 Best Places to Visit in New Mexico, According to Locals	newsexplorer.net	6,769		\$62.78	\$188.35	https://ne	1-Jan
Oppenheimer's secret city!	VOCAL	1,261,634		\$11,701.66	\$35,104.97	https://voi	2-Jan
Level Up Your Kid's Skiing At Camp Bluebird On Pajarito	Los Alamos Daily Post	33,762		\$313.14	\$939.43	https://lad	3-Jan
Vibrant people fill New Mexico's outdoors scene with inspiring stories	Taos News	41,884		\$388.47	\$1,165.42	https://wv	3-Jan
Los Alamos Historical Society: Former CIA Spy Bruce Held Reveals 'Wildest Year' As Acting NNSA Administrator	Los Alamos Daily Post	33,762		\$313.14	\$939.43	https://lad	3-Jan
Pajarito Mountain To Open Townsight Lift On Saturday	Los Alamos Daily Post	33,762		\$313.14	\$939.43	https://lad	4-Jan
SALA Event Center Pushes Forward With LEDA Agreement To Bring Immersive Theater Experience To Los Alamos	Los Alamos Daily Post	33,762		\$313.14	\$939.43	https://lad	4-Jan
Pajarito: Townsight+100% Terrain+Powder=Get Here Now!	Los Alamos Daily Post	33,762		\$313.14	\$939.43	https://lad	5-Jan
Today's Deepest Resorts – These Are North America's Top 5 Snowfall Totals for January 5, 2024	SnowBrains.com	619,393		\$5,744.87	\$17,234.61	https://snk	5-Jan
Los Alamos Historical Society Announces Postponement Of Bruce Held Lecture; Offers B-Roll Of Oppenheimer	Los Alamos Daily Post	33,762		\$313.14	\$939.43	https://lad	5-Jan
Walk in the footsteps of scientific and creative giants in Los Alamos, NM	Luxe Beat Magazine	15,904		\$147.51	\$442.53	https://lux	5-Jan
Historical Society Offers Oppenheimer B-Roll Footage At SALA Event Center Jan. 9 As Bruce Held Lecture Is Po	Los Alamos Reporter	40,070		\$371.65	\$1,114.95	https://los	7-Jan
Coming up Golden: NM-filmed 'Oppenheimer' picks up five Globes, remains frontrunner for Oscars	Yahoo! Entertainment	8,223,451		\$76,272.51	\$228,817.52	https://wv	7-Jan
6 Towns in New Mexico With Rich History	World Atlas	4,657,141		\$43,194.98	\$129,584.95	https://wv	7-Jan
New numbers reveal "Oppenheimer" impact on Los Alamos tourism	KRQE-TV	972,009		\$9,015.38	\$27,046.15	https://wv	8-Jan
Historic Oppenheimer House in Los Alamos to Undergo \$2 Million Restoration	BNM Breaking	1,218,697		\$11,303.41	\$33,910.24	https://bn	8-Jan
Los Alamos Historical Society seeks \$2 million to restore Oppenheimer house	Yahoo! News	58,768,089		\$545,074.03	\$1,635,222.08	https://ne	8-Jan
Golden Globe winner 'Oppenheimer' filmed in Santa Fe, Los Alamos and Abiquiú	Yahoo! News	58,768,089		\$545,074.03	\$1,635,222.08	https://ne	8-Jan
Los Alamos Historical Society seeks \$2 million to restore Oppenheimer house	The Santa Fe New Mexican	290,343		\$2,692.93	\$8,078.79	https://wv	8-Jan
Golden Globe winner 'Oppenheimer' filmed in Santa Fe, Los Alamos and Abiquiú	The Santa Fe New Mexican	290,343		\$2,692.93	\$8,078.79	https://wv	8-Jan
Oppenheimer sweeps Golden Globes: The atomic bomb and two verses from the Bhagavad Gita	The Indian Express	43,171,124		\$400,412.18	\$1,201,236.53	https://inc	9-Jan
New numbers reveal "Oppenheimer" impact on Los Alamos tourism Annalisa Pardo — KRQE NEWS 13 – Break	Romulans	438		\$4.06	\$12.19	https://wv	9-Jan
To face unafraid	Santa Fe Reporter	57,100		\$529.60	\$1,588.81	https://wv	11-Dec
What are the unique urban parks in New Mexico?	Energy Portal	655,369		\$6,078.55	\$18,235.64	https://wv	12-Dec
Los Alamos Cooperative Market Hosts San Ildefonso Pueblo Artist Jerome L. Martinez Through Jan.14	Los Alamos Daily Post	33,762		\$313.14	\$939.43	https://lad	12-Dec
What are the best places for a nature walk in New Mexico?	Energy Portal	655,369		\$6,078.55	\$18,235.64	https://wv	13-Dec
Winter storm dumps fresh powder at New Mexico ski areas	KOB-TV	581,227		\$5,390.88	\$16,172.64	https://wv	14-Dec
Off the beaten path	Santa Fe New Mexican (Print Editor	307,003		\$2,847.45	\$8,542.36	proquest:q	14-Dec
Snowy slopes beckon: Two more northern New Mexico ski areas open this weekend	Yahoo! Sports	25,305,622		\$234,709.64	\$704,128.93	https://spk	15-Dec
Snowy slopes beckon: Two more northern New Mexico ski areas open this weekend	Albuquerque Journal	393,722		\$3,651.77	\$10,955.31	https://wv	15-Dec
New Mexico: Taos, Santa Fe, White Sands	Ivoox	1,645,045		\$15,257.79	\$45,773.38	https://wv	20-Dec
Tiny Texas Towns: Just How Tiny Are They?	KELU-FM	1,663		\$15.42	\$46.27	https://98	22-Dec
Connecting people and places	Santa Fe New Mexican (Print Editor	307,003		\$2,847.45	\$8,542.36	proquest:q	24-Dec
Christmas Day Scenes On Pajarito Mountain Ski Area	Los Alamos Daily Post	33,762		\$313.14	\$939.43	https://lad	25-Dec
Tiny Texas Towns: Just How Tiny Are They?	101.9 The Bull	21,810		\$202.29	\$606.86	https://the	26-Dec
Artist Jerome Martinez At Co-op Market Saturday	Los Alamos Daily Post	33,762		\$313.14	\$939.43	https://lad	29-Dec
Daily Postcard: Bird's Eye View Of Pajarito Mountain	Los Alamos Daily Post	33,762		\$313.14	\$939.43	https://lad	31-Dec
What a year: Looking back at top stories in New Mexico in 2023	ADL News	19,223,132		\$178,294.55	\$534,883.65	https://wv	31-Dec
What a year: Looking back at top stories in New Mexico in 2023	Yahoo! Entertainment	8,965,823		\$83,158.01	\$249,474.02	https://wv	31-Dec
7 Picture-Perfect Towns in New Mexico	News Pub	1,821		\$16.89	\$50.67	https://ne	31-Dec
7 Picture-Perfect Towns in New Mexico	World Atlas	4,657,141		\$43,194.98	\$129,584.95	https://wv	31-Dec
7 ciudades perfectas en Nuevo México	Noti-Ultimas	4,020		\$37.29	\$111.86	https://wv	31-Dec
<b>Totals</b>		<b>262,546,205</b>		<b>\$2,435,116.05</b>	<b>\$7,305,348.15</b>		

\*News Circulation Audience and News Ad Value is generated through Meltwater and SimilarWeb

\*PR Value is determined by multiplying the News Ad Value by 10, this a public relations industry standard (which takes into account third party opinion values and strategic messaging).

\*Note - In this report, we have compiled tourism-related mentions featuring Los Alamos and surrounding attractions that are likely to draw in visitors. From a tourism standpoint, not all local news may be included. While we send the news releases to outlets and reporters whose interests are in line with the subject matter and follow up with pitch calls to ensure they have received the release, as well as to pitch them on featuring Los Alamos, it is at the discretion of news rooms and news directors to determine which stories are picked up and placed in the news.

### Social Media

#### Facebook

Monthly Reach	Monthly Engagements	Followers
3,063	396	15,350
Total Followers	Engagements	Reach
1,063	106	669

**Reach:** The number of people who saw any of your Page posts.

**Monthly Engagements:** The number of times people have engaged with your posts through likes, comments and shares.

**Followers:** The number of people who follow the page and receive updates in their newsfeed.

**Instagram Engagements:** The number of times people have engaged with your posts through likes and comments.



# County of Los Alamos

## Staff Report

January 23, 2024

Los Alamos, NM 87544  
www.losalamosnm.us

---

**Agenda No.:** III c

**Index (Council Goals):**

**Presenters:** Daniel Ungerleider, Economic Development Administrator

**Legislative File:** 18248-24

---

### **Title**

White Rock Visitors Center Shelter Update

### **Body**

On January 9, 2024, County Council Awarded a Contract in the Amount of \$1,230,398.00 plus Applicable Gross Receipts Tax to Pluma, LLC for Construction of the White Rock Visitor Center Outdoor Restrooms and Pavilion Project, Establish a Project Budget in the Amount of \$1,670,000.00; and Approved Related Budget Revision 2024-42.

### **Attachments**

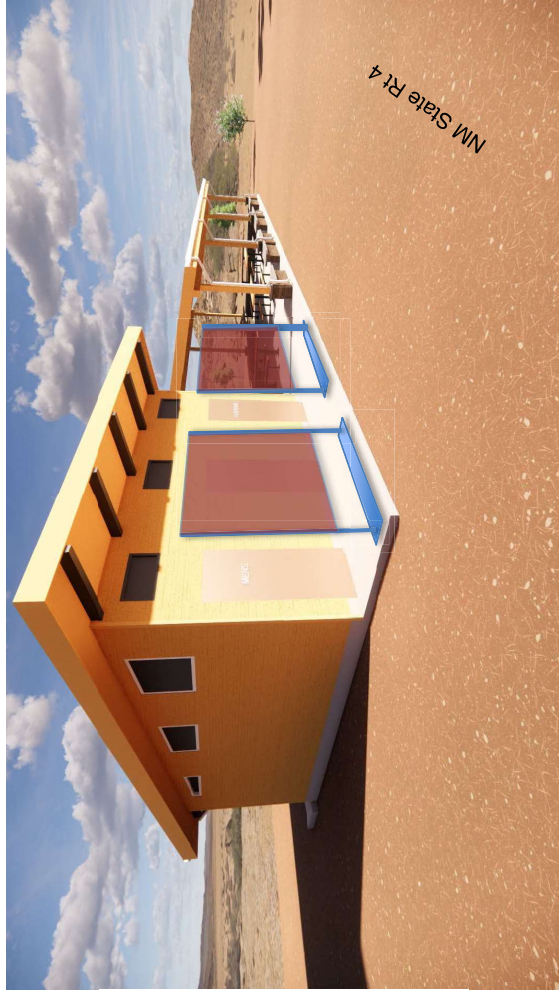
B - WRVC Shelter LTAB Update













# County of Los Alamos

## Staff Report

January 23, 2024

Los Alamos, NM 87544  
www.losalamosnm.us

---

**Agenda No.:**

**Index (Council Goals):**

**Presenters:** Daniel Ungerleider, Economic Development Administrator

**Legislative File:** 18250-24

---

**Title**

FY25 Budget Introduction and Discussion

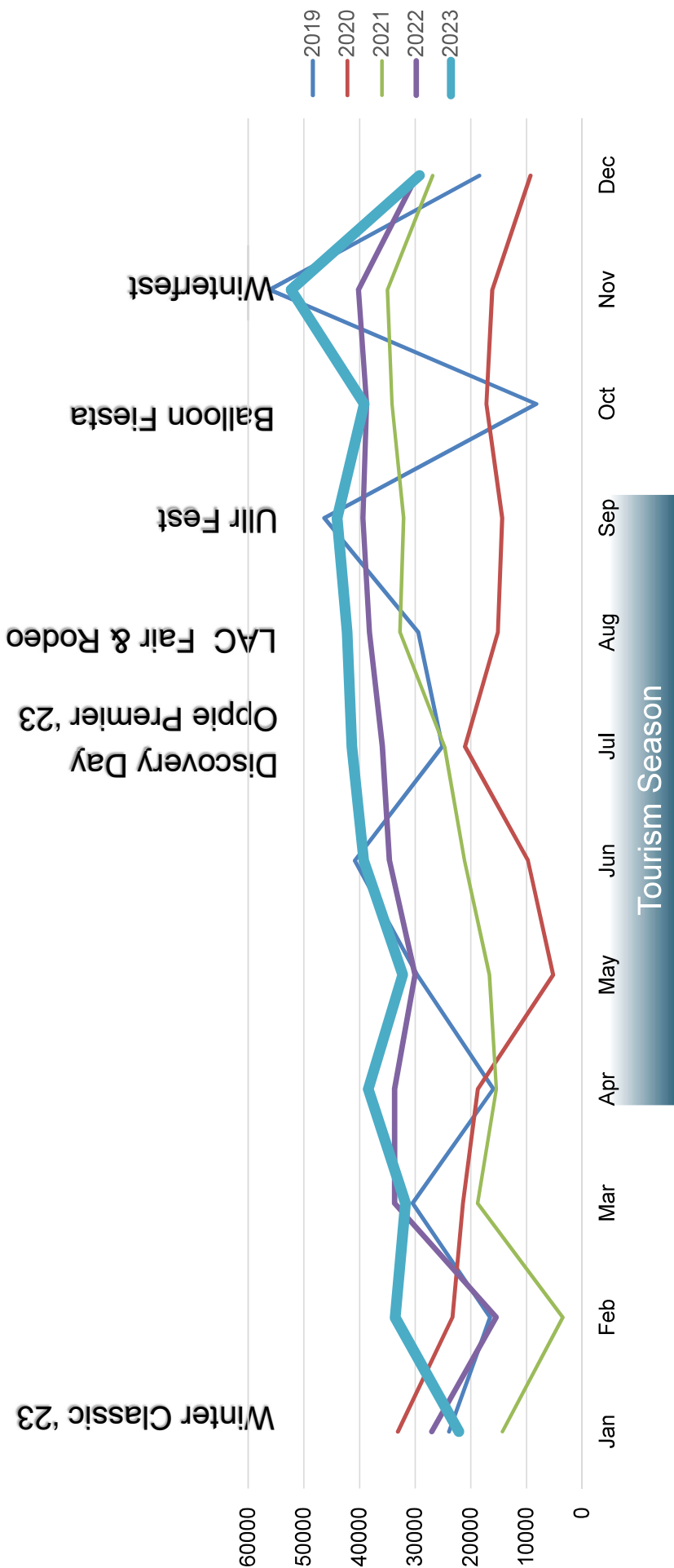
**Body**

This will be an introduction and discussion regarding the LTAB FY25 Budget. No action will be taken.

**Attachments**

E - LTAB REVENUE

# Lodger Tax Revenues





# County of Los Alamos

## Staff Report

January 23, 2024

Los Alamos, NM 87544  
www.losalamosnm.us

---

**Agenda No.:**

**Index (Council Goals):**

**Presenters:** Daniel Ungerleider, Economic Development Administrator

**Legislative File:** 18259-24

---

**Title**

Lodgers' Tax Advisory Board Meeting dates for 2024

**Attachments**

F - EDD Meetings (EVAT, LTAB, and TITF)

**EDD Meetings (EVAT, LTAB, and TITF)**

- Economic Vitality Action Team (EVAT) 3<sup>rd</sup> Tuesday at 3 pm
- Lodger's Tax Advisory Board (LTAB) 3<sup>rd</sup> Tuesday at Noon as scheduled
- Tourism Implementation Task Force (TITF) 1<sup>st</sup> Wednesday at Noon as scheduled

Group	Date	Agenda Due	Notes
LTAB	Tue 01/16	Thu 01/11	Work Plan
TITF	Wed 02/07	Fri 02/02	Work Plan Discussion and Recommendations to LTAB
EVAT	Tue 02/20	Thu 02/15	
EVAT	Tue 03/19	Thu 03/14	
LTAB	Tue 03/19	Thu 03/14	Joint Meeting with TITF - Work Plan and Budget
TITF	Tue 03/19	Thu 03/14	Joint Meeting with LTAB - Work Plan and Budget
EVAT	Tue 04/16	Thu 04/11	
LTAB	Tue 04/16	Thu 04/11	
TITF	Wed 05/01	Fri 04/26	
EVAT	Tue 05/21	Thu 05/16	
EVAT	Tue 06/18	Thu 06/13	
EVAT	Tue 07/16	Thu 07/11	
EVAT	Tue 08/20	Thu 08/15	
EVAT	Tue 09/17	Thu 09/12	
LTAB	Tue 09/17	Thu 09/12	Joint Meeting with TITF - FY24 Results/FY25 Kickoff
TITF	Tue 09/17	Thu 09/12	Joint Meeting with LTAB - FY24 Results/FY25 Kickoff
LTAB	Tue 10/15	Thu 10/10	
EVAT	Tue 10/22	Thu 10/17	
TITF	Wed 11/06	Fri 11/01	Work Group Reports and Recommendations to LTAB
EVAT	Tue 11/19	Thu 11/14	
EVAT	Tue 12/17	Thu 12/12	
LTAB	Tue 12/17	Thu 12/12	Joint Meeting with TITF - Mid-Year Update & Work Plan Discussion
TITF	Tue 12/17	Thu 12/12	Joint Meeting with LTAB - Mid-Year Update & Work Plan Discussion